

1

Go to this website: e - *v*otez

www.e-votez.net/FMM



Identification :

Matricule :

Clé de Vote :

 -

At this point you should be prompted to enter your **ID** ("matricule") and **password** ("clé de vote"):

2

Once you are logged in,
Click on the envelope

CONSEIL D'ADMINISTRATION



Cliquez pour voter

!

If you have misplaced or did not receive your login information

➔ Click on « *Je n'ai pas mes identifiants* »

- **Identifiant:** enter **your FMM email address**
- Enter **your birthday**
- Choose a **password**
- **You will then get an email: Click on the enclosed link**
- **Enter your newly created password to retrieve your login info.**

3



The name of our list is:

« Pour une entreprise respectueuse de **TOUS** ses salariés »



CFTC



Click on the magnifying glass to see our candidates

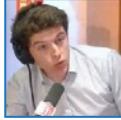
IMPORTANT : You are voting for a list, not individual candidates.

4

You have chosen the **CFTC** list.



Aziza NAIT SIBAHA



Edouard du PENHOAT



Alexia WODLI




Click **validation**
to cast your vote


Liste entière Oui Non

5

You will now need to record your vote by **entering your ID and password again.**

**Vous avez 1 vote(s) prêt(s) pour enregistrement.
Il n'y a plus de vote à préparer.**

 **ABANDONNEZ**
tous les votes préparés.

-  Saisissez votre clé de vote et enregistrez
DEFINITIVEMENT tous les votes préparés.

That's it, you're all done! a confirmation should appear with the date and time your votes were recorded. Additionally, you can choose to receive an email confirmation.



ÉLECTION AU CA DE FMM
VOTEZ CFTC !

