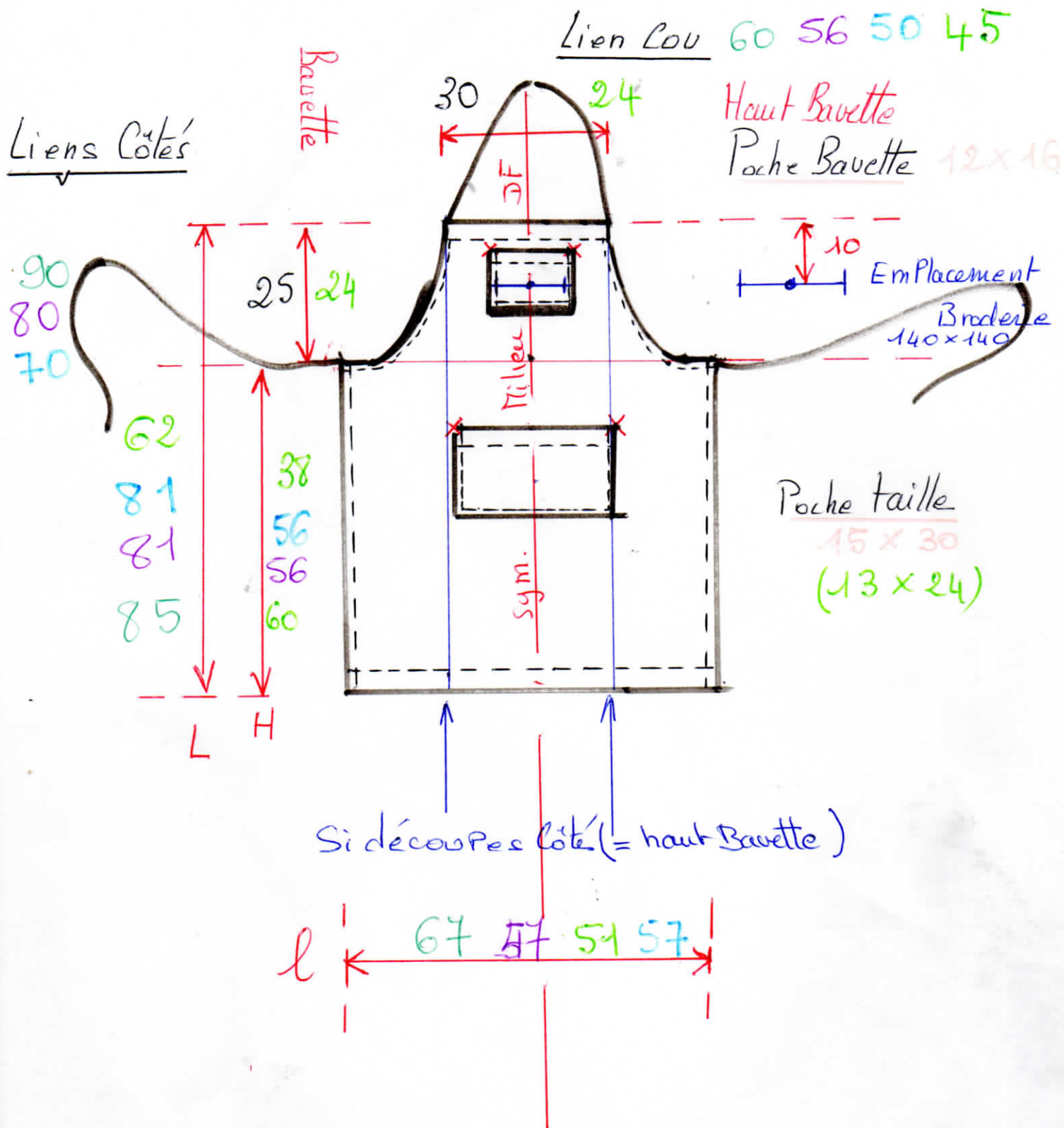


TABLIER C s M



Mesures (environ) tablier fini = en cm

- * Homme
- * Femme
- ada
- * Enfants

Patron tablier Ccm

(Homme) Femme - ado, Enfant

+3cm
oulet

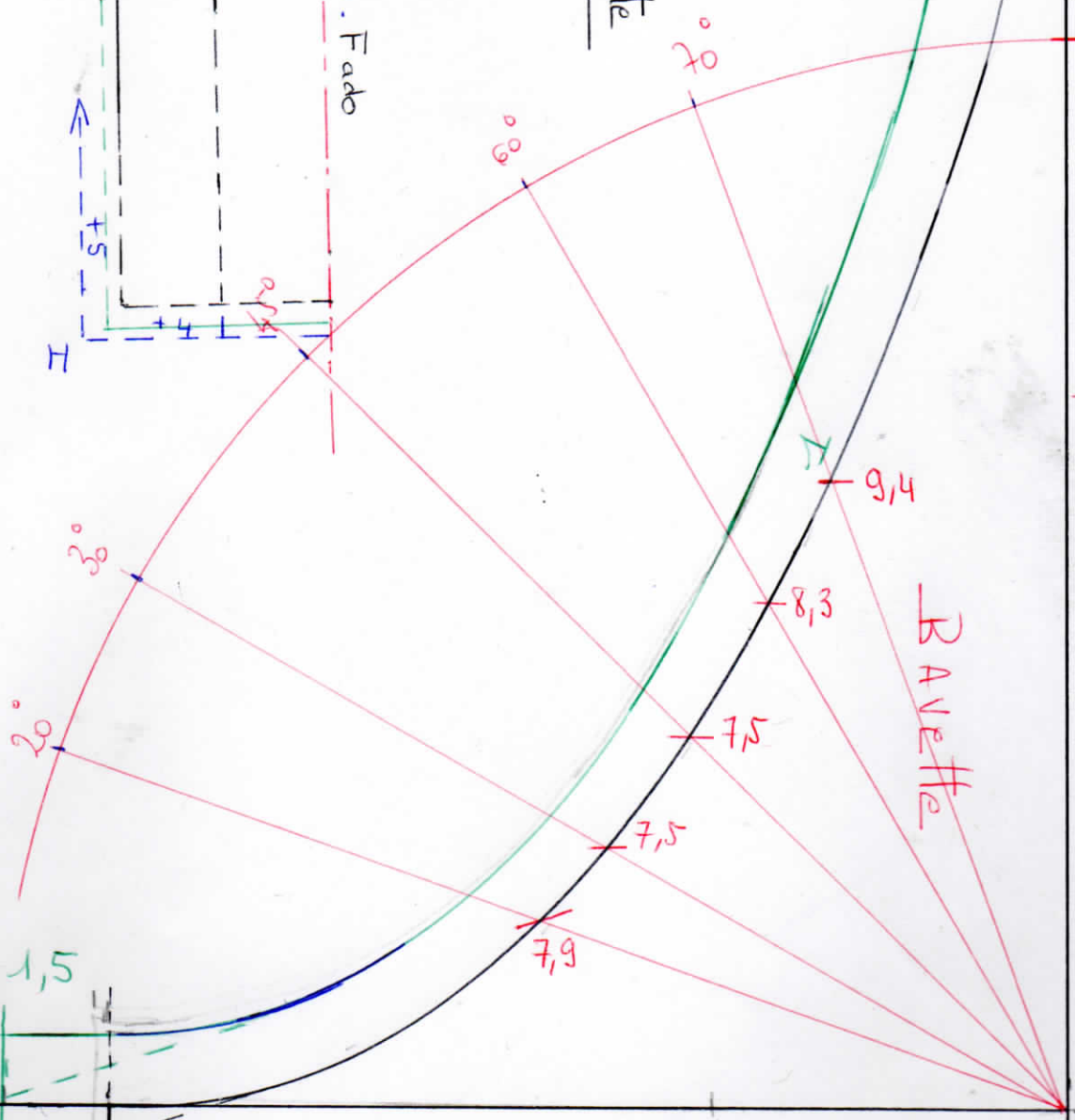
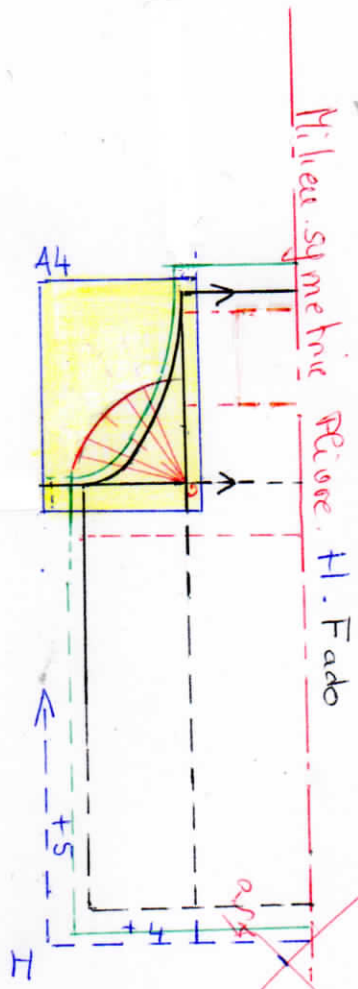
HFa.

+12cm Enfant (sym)

+15cm Homme / Femme - ado (sym)

arrondis Bassette
couture

Bassette



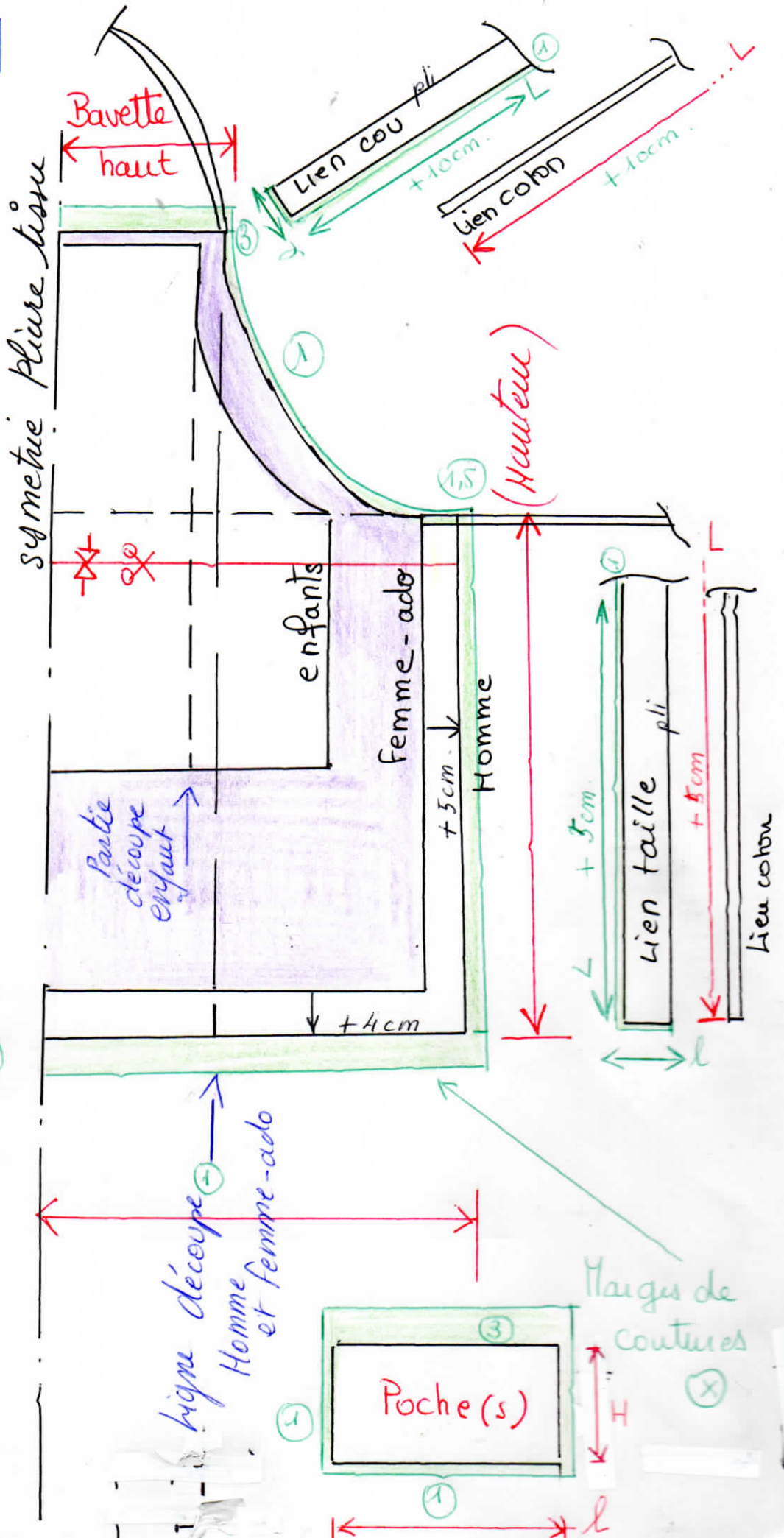
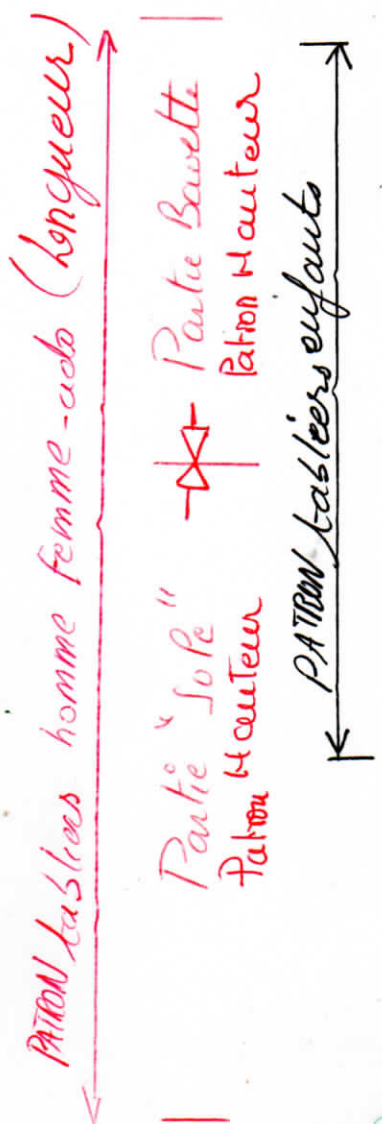
coûtés

EF

H

PATRONS tabliers Csm (suite)

Marges de coutures à ajouter



(Largeur)

ligne découpe Homme et femme-ado