



WINTER

by Justyna Lorkowska



Size

One size: to fit 54-56 cm/21-22" circumference.
Length from folded brim to top - about 23 cm/9.25".

Yarn

2 skeins of Comfy DK by Martin's Lab: 100% superwash merino. 225 m/246 yards per 100 grams. *Shown in colors Silver Lining, MC and Bubble Gum, CC (dominant color).*

Needles

4.00 mm/US #6 circular needle (at least 40 cm/16" long) and dpns, or appropriate size to get gauge,
3.5 mm/US #4 circular needle (at least 40 cm/16" long) or dpns, or two sizes smaller than gauge needles.

Other

1 stitch marker, tapestry needle for weaving.

Gauge

23 sts and 26 rnds in 10 cm/4" in fair-isle pattern worked in the rnd with needle 4.0 mm/US #6.

Take time to save time and check your gauge. Adjust needle size if necessary to obtain the correct gauge.

Abbreviations

BOR - beginning of the rnd; **CC** – contrasting color; **CO** - cast on; **k** - knit; **k2tog** - knit 2 stitches together as one; **m1R** - **make one right** - lift loop between stitches from the back, knit into front of loop; **MC** -main color; **p** - purl; **rep** – repeat; **rnd** - round; **st, sts** - stitch, stitches; ****** - repeat as noted between asterisks.

Pattern Techniques

German Twisted Cast-On - you may refer to: <http://bit.ly/2wmiNKd>
Color dominance in fair-isle - I strongly recommend reading: <http://bit.ly/2mAGARQ>

Pattern Stitches

1x1 Rib (in the Rnd) - *k1, p1*, rep around.

Instructions

Brim

Using German Twisted and smaller size needles, 3.5 mm/US #4, CO 108 sts. Join for working in the round making sure not to twist the sts. Place BOR marker.

Work in 1x1 Rib for 10 cm/4".

Increase rnd: *k9, m1R*, rep around. 120 sts

Body & Crown

Change to bigger size needle, 4.0 mm/US#6.

Work all chart rows from right to left, 4 times per rnd.

Note: Whenever the yarn needs to be carried for more than 5-6 stitches, cross the yarn strands to avoid long floats and try to control the tension.

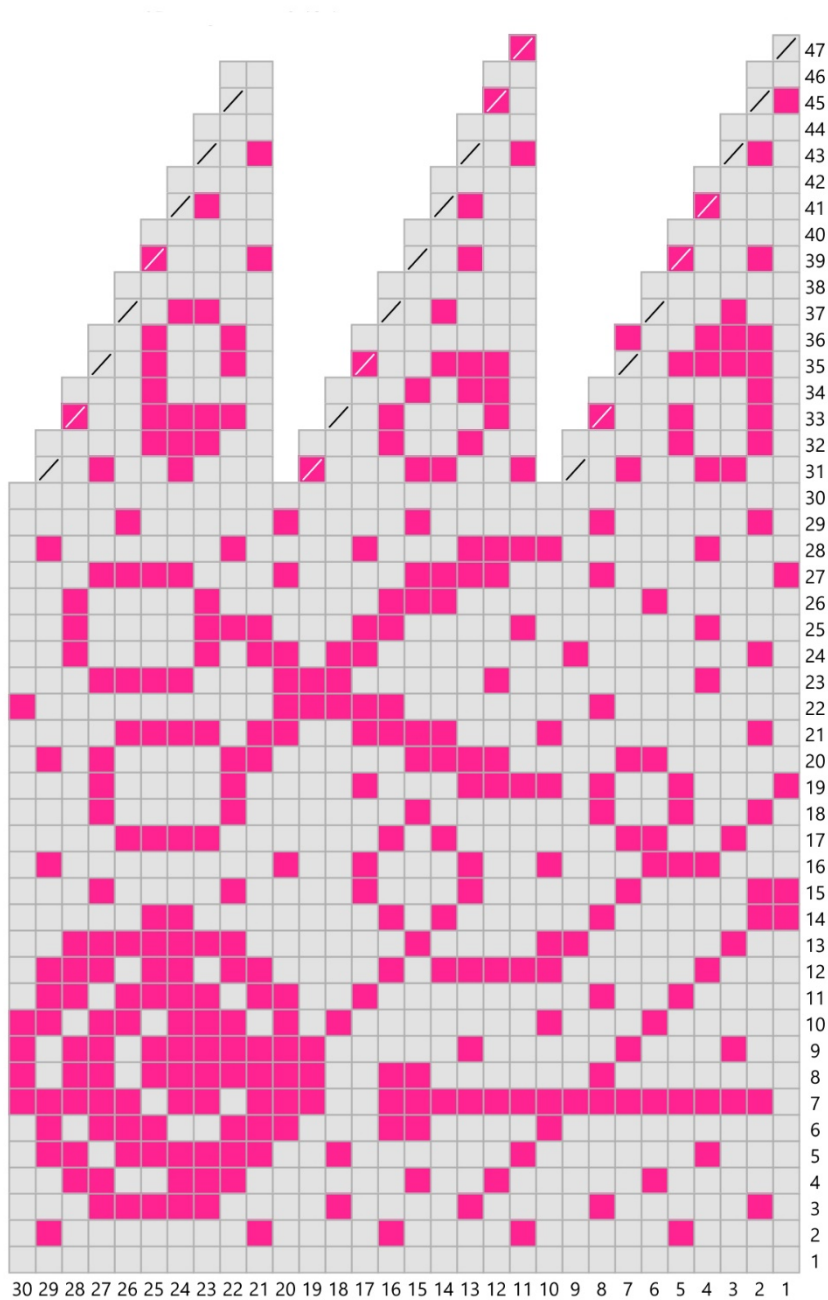
On **Rnd 31** begin crown shaping and work k2tog wherever shown on the chart. After completing **Rnd 47** you will have 12 sts.

Finishing

Cut yarn and thread through remaining live stitches and pull taut, closing the hole. Weave in ends and block the hat lightly. Use a balloon to block the hat by placing a partially inflated balloon inside the hat, then fully inflating to required head circumference. DO NOT fully inflate the balloon first, then try to fit the hat over it - this will overstretch the rib! Add a pompom if you wish to. Enjoy!



Yarn&Needles Chart



Key

- knit
- k2tog
- MC
- CC

Contact & Support

email: support@letesknits.com
 website - <http://www.letesknits.com>
 Ravelry ID - Lete
 Ravelry group - Lete's Knits

Copyright Agreement

This pattern is property of Justyna Lorkowska. It is copyrighted and is for personal and non-profit use only. This means you can knit for yourself, for a gift or for charity. You may not sell a hat made from this pattern. You may not reproduce this pattern on, or distribute it from a website. This pattern may not be translated, reproduced or circulated in another language. Downloading or printing the pattern constitutes agreement within these terms. Thank you and enjoy your Mindcraft! Justyna Lorkowska, Toruń, Poland, September, 2017.

