

# *Frosty Apples Shawl*

## **"Яблоки на снегу"** by Lyubov Shalnaya

This is a shawl with a triangular body and semicircular lace edge, knitted from the top down. The increases of the body are made on both sides of the central stitch and along the edges of the shawl in each odd row. **The Body** of the shawl is worked as **K in every row**. In the diagram of the **Lace Border** and the **Edge** sts are K in RS, on WS all stitches, including nups, yo and reduction are purled.

The central stitch is worked as K on every side.

There is no central stitch in the **Border** and the **Edge**, but you should work also the edge loop. The diagrams should be read from right to left.

### **Materials:**

Yarn: about 100 g of any solid color yarn that holds a blocking 657- 875 yards (600-800 meters) /100g

Circular needles: US 2,5 - 4 -6 (30ins)

0,5 – 2 mm crochet hook (for the cast on and placing beads)

About 5-10 g. size 10 - 8 beads

My red shawl is made from ~100 g of from 100 g of Aade Lõng color Red 8/1 (100% wool, 875 yards (800 meters) /100g), circular needles Addi US 2,5 - 4 -6 /30 ins. and ab. 10 g of scarlet beads Preciosa №10.

**Blocked size:** ~ 71/35 ins. It also depends on your choice of yarn and needles as well as the individual manner of knitting.



### How to work:

Using provisional yarn with a crochet hook make a chain of 5 sts, then with main yarn pick up and knit 3 stitches knitting in the bumps on the back of the chain. Knit 10 rows in garter stitch. At the end of row 10<sup>th</sup> turn your work 90° clockwise, pick up and knit 5 sts along the longer side of the strip. Undo the provisional yarn and pick up the three open stitches onto the left-hand needle and knit them (11 sts on right-hand needle). Continue your work with 3-sts garter border at the beginning and the end of each row.

**Set-Up Row (WS):** K3-sts garter border, K5, K3-sts garter border - 11sts on right-hand needle.

Work the **Body** as follows:

Row 1: K3-sts garter border, yo, K2, yo, K1-central stitch, yo, K2, yo, K3-sts garter border.

Row 2: K all sts.

**Row 3:** K3-sts garter border, yo, K sts before the central stitch, yo, K1-central stitch, yo, K sts before the edge loop, yo, K3-sts garter border.

**Row 4:** K all sts.

Repeat Rows 3-4 until you have 243 sts on right-hand needle:

**K3-sts garter border +K118+ K1-central stitch +K118+ K3-sts garter border = 243 sts.**

Begin to work the **Border** and the **Edge** with a larger size of the needles. There is no central stitch anymore!

Thus work rows 1-40 of the **Border** once. The diagram should be read from right to left.

Work Rows 1-33 of the **Edge** once. The diagram should be read from right to left.

The next row (34<sup>th</sup> WS) is finishing.

Cast off all sts very loosely with US 6 needles size, cut your yarn and weave in the ends.

Wet your shawl, then block.

**B** in the diagram represents the place of blocking.

Enjoy it!



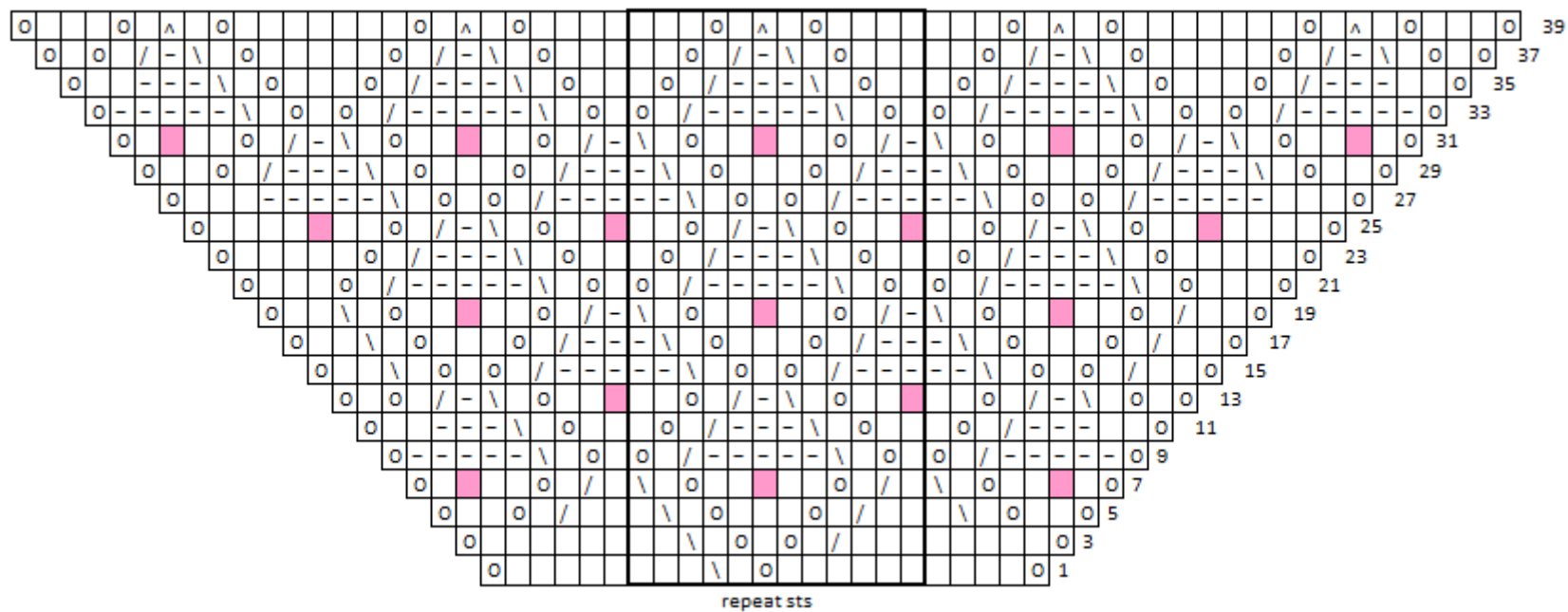
### Key

- K on RS, P on WS
- P on RS, K on WS
- Yo on RS, P on WS
- / Knit 2 together (K2tog on RS, P on WS)
- \ Slip1, knit1, pass slipped stitch over (SKP on RS, P on WS)
- A Knit 3 together (K3tog on RS, P on WS)
- B blocking place (fix this stitch with a pin)
- place bead
- make nupp (\*K,Yo\* 4 times,K on RS, P9tog on WS)

Любовь Шальная

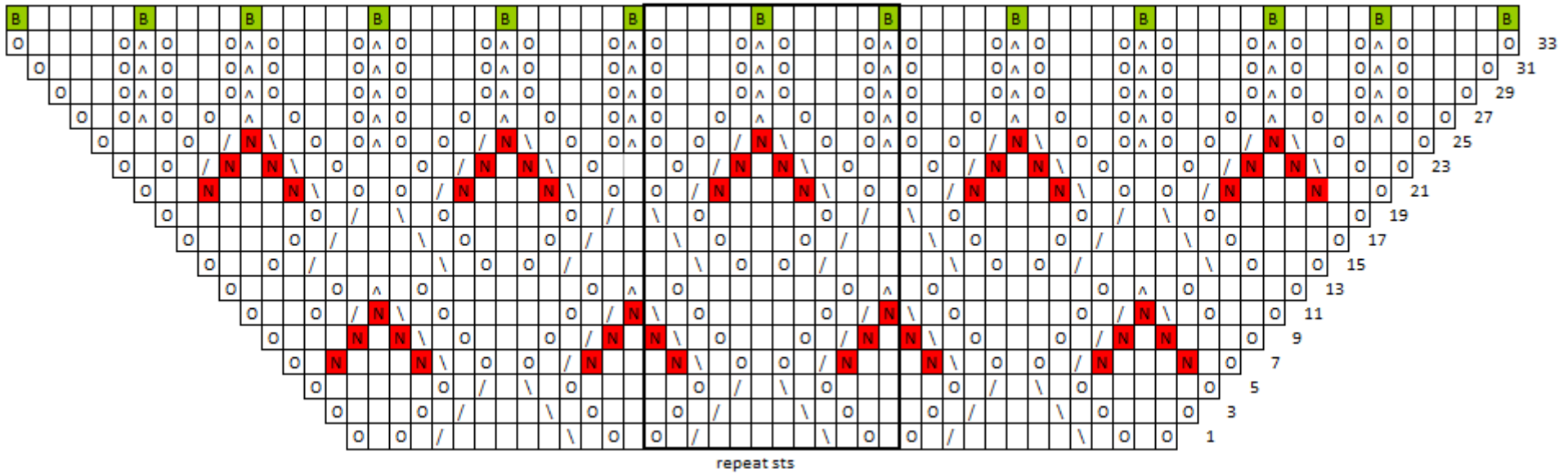


# Border





# Edge



- 4 - Frosty Apples Shawl Яблоки на снегу, 2016 © Любовь Шальная, <https://vk.com/lyubasshaws>.  
 Free pattern. For non-commercial use only. **You cannot change the format of the pattern when you distribute it.**