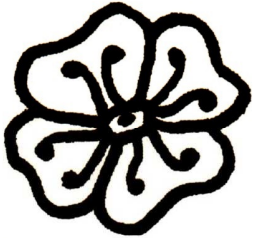


Graphie de[r]

Entoure la lettre r.



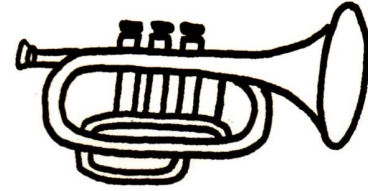
r r R



fleur



raisin



trompette

fleur

raisin

trompette

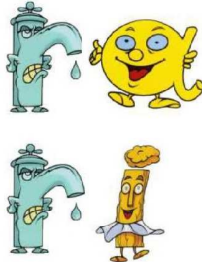
FLEUR

RAISIN

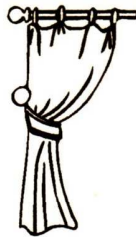
TROMPETTE

ra/ri

Entoure les dessins avec [ra] en rouge, avec [ri] en bleu. Entoure les syllabes avec ces mêmes couleurs.



radio



rideau



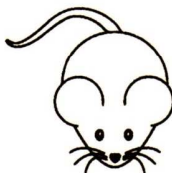
riz



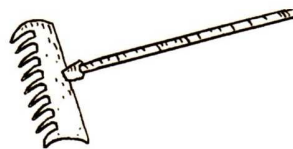
ramoneur



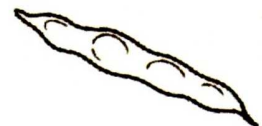
radis



souris



râteau



haricot