

Bretelles
1 et 2

Devant 1

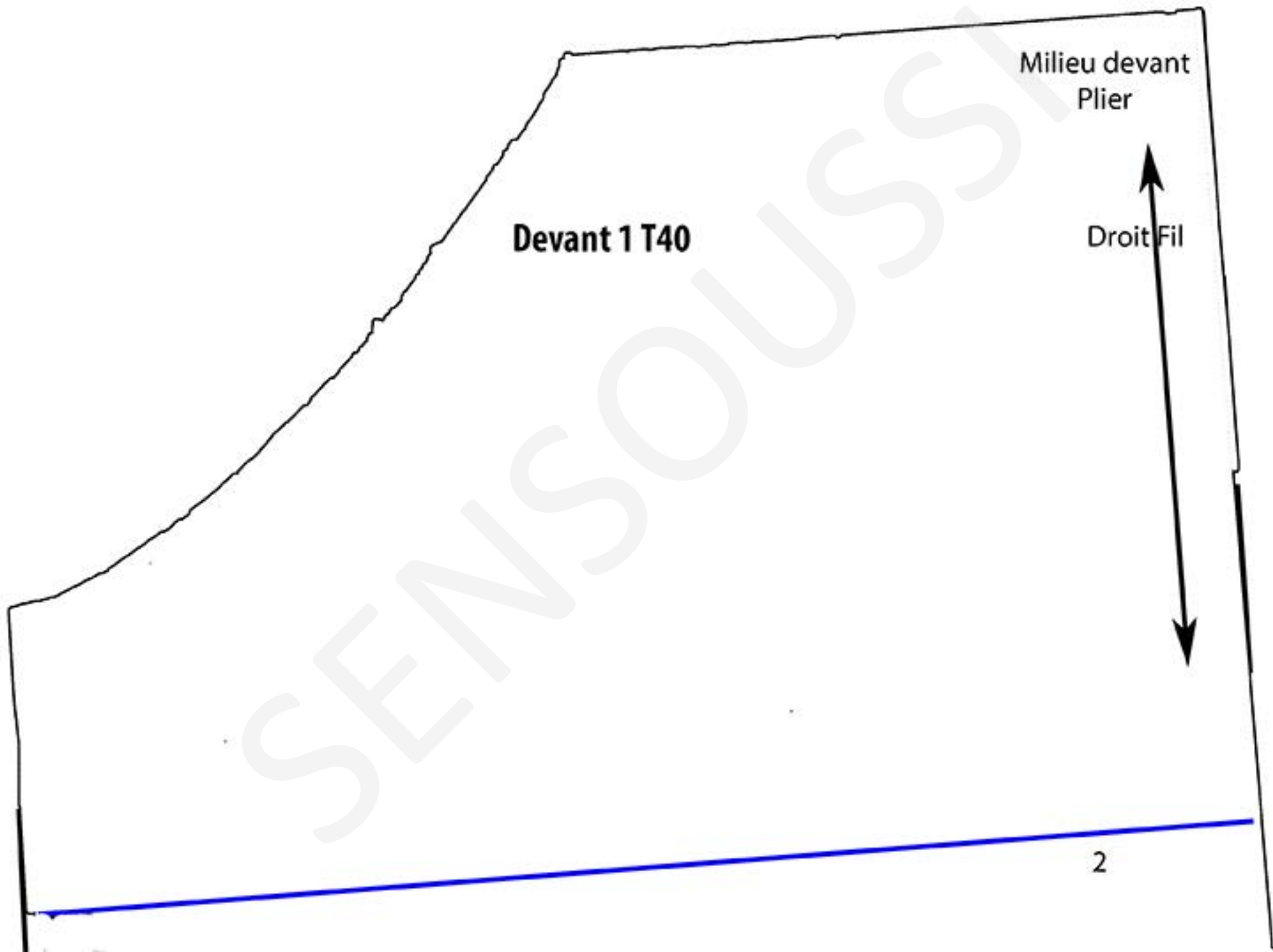
Devant/Dos 2

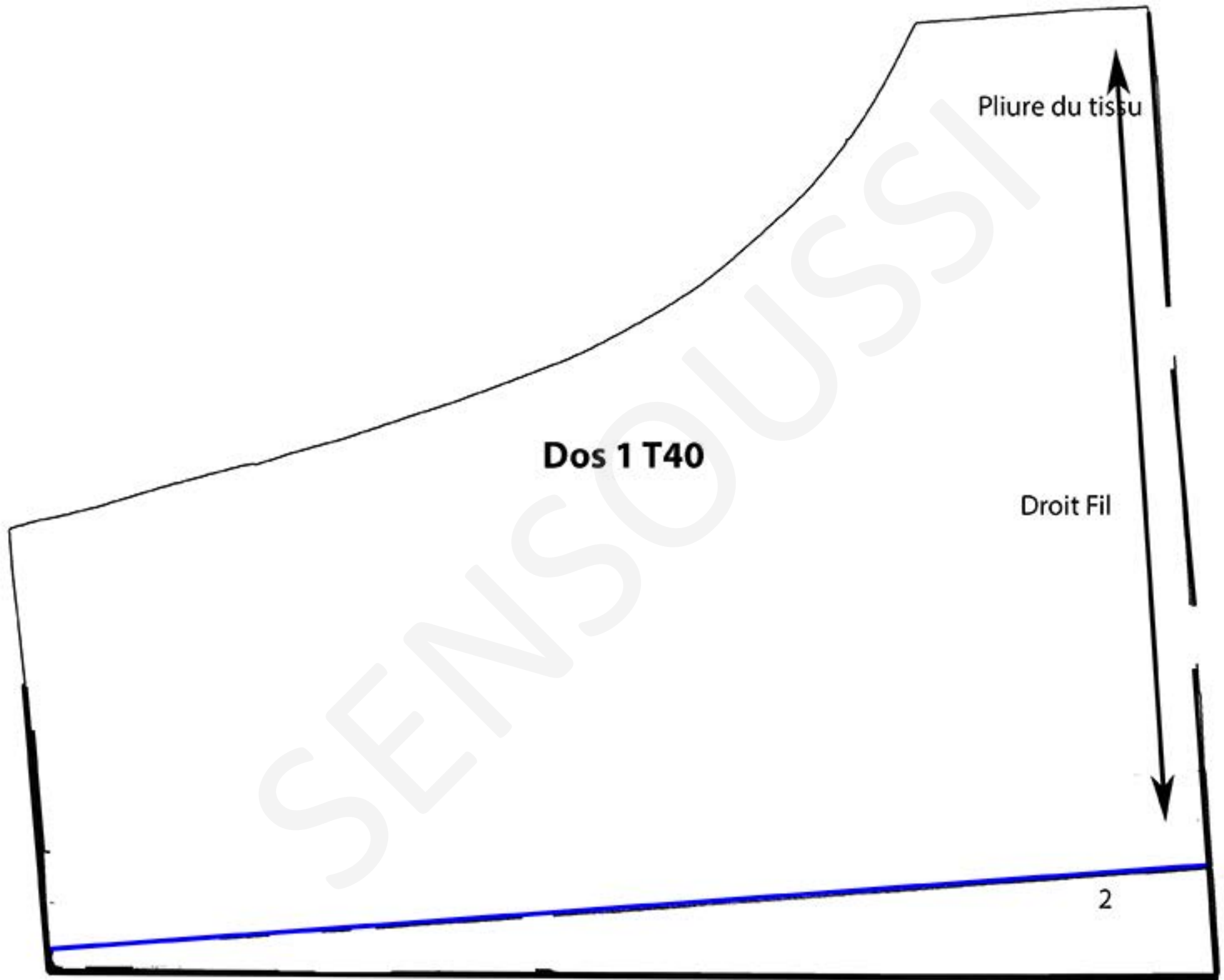
Devant
Dos 4

Devant
Dos 3

Prolonger le patron
selon les indications







Devant 2 T40

1

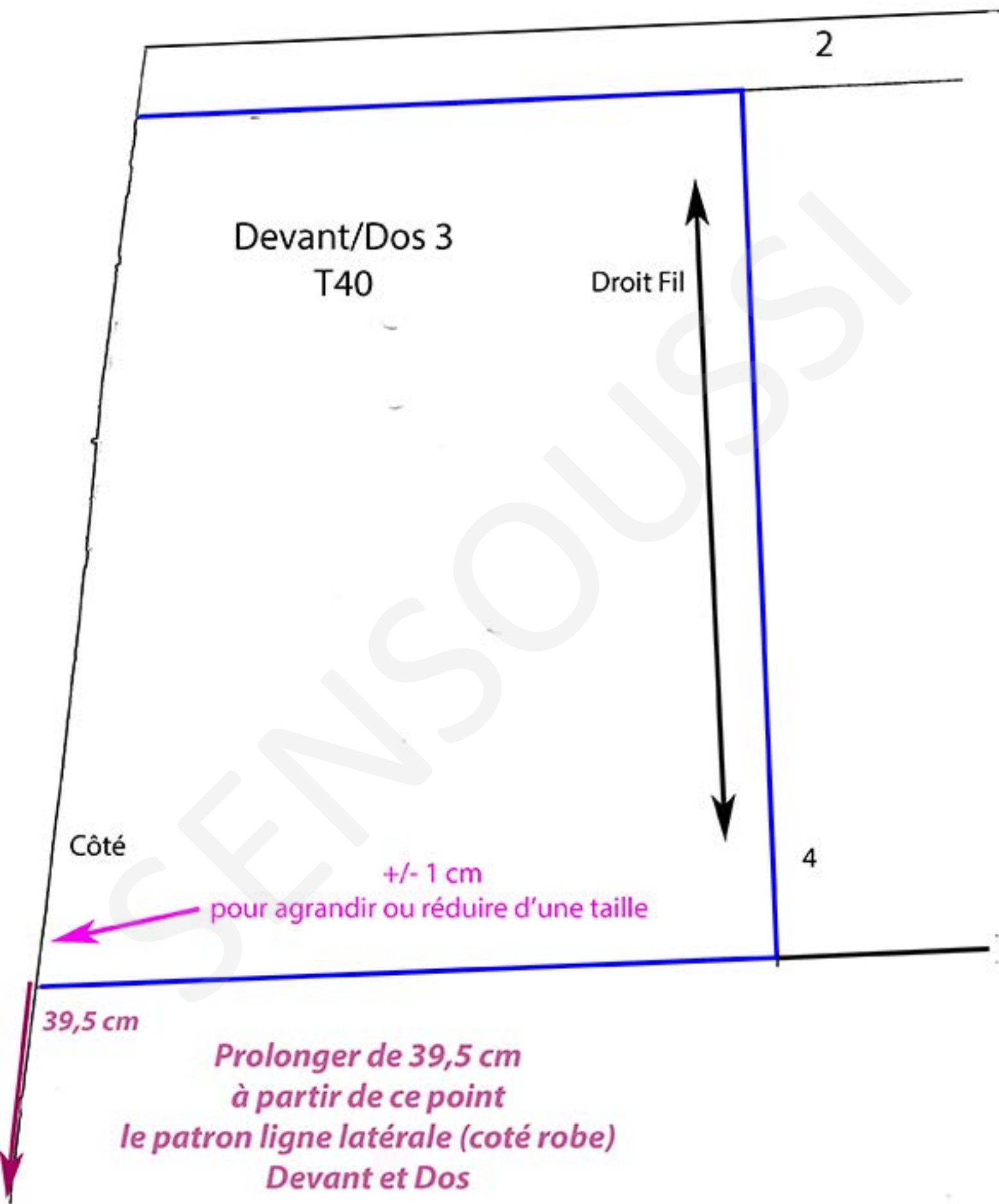
Droit Fil

Pliure tissu

3

4

SENSO USSI



Devant/Dos 3
T40

Droit Fil

Côté

+/- 1 cm

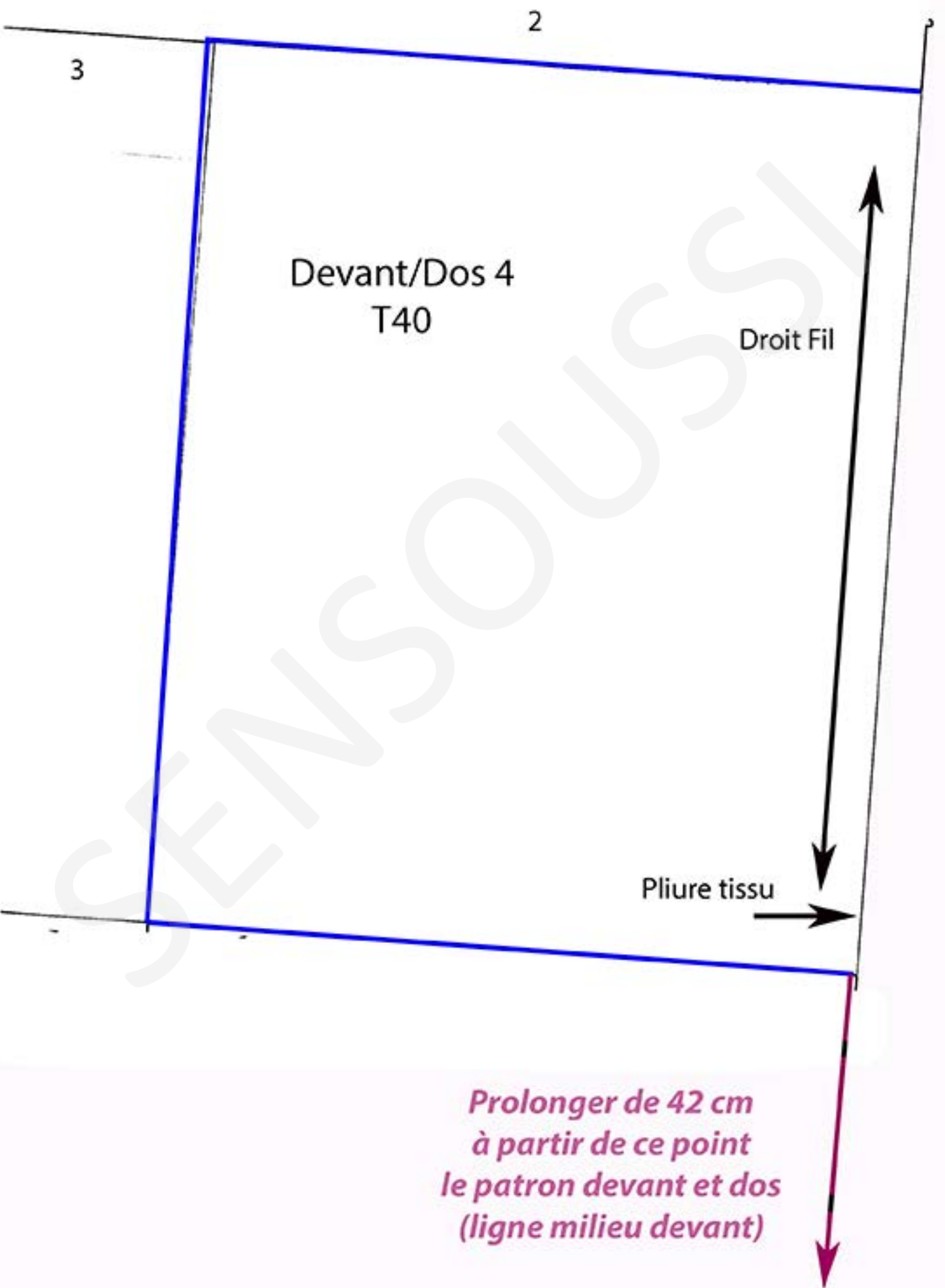
pour agrandir ou réduire d'une taille

39,5 cm

*Prolonger de 39,5 cm
à partir de ce point
le patron ligne latérale (coté robe)
Devant et Dos*

2

4

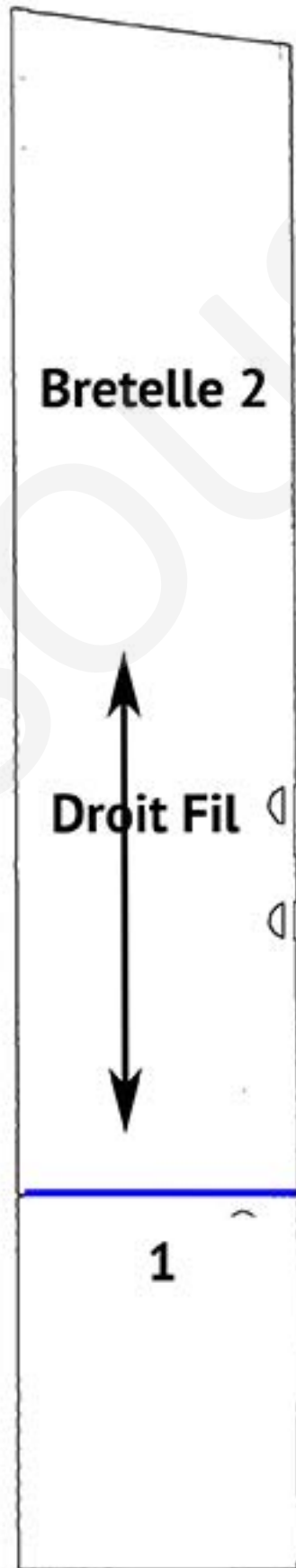


Devant/Dos 4
T40

Droit Fil

Pliure tissu

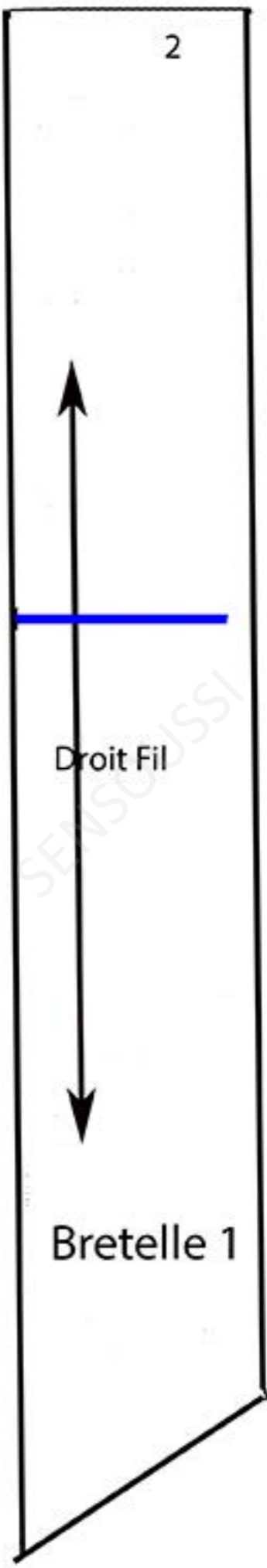
*Prolonger de 42 cm
à partir de ce point
le patron devant et dos
(ligne milieu devant)*

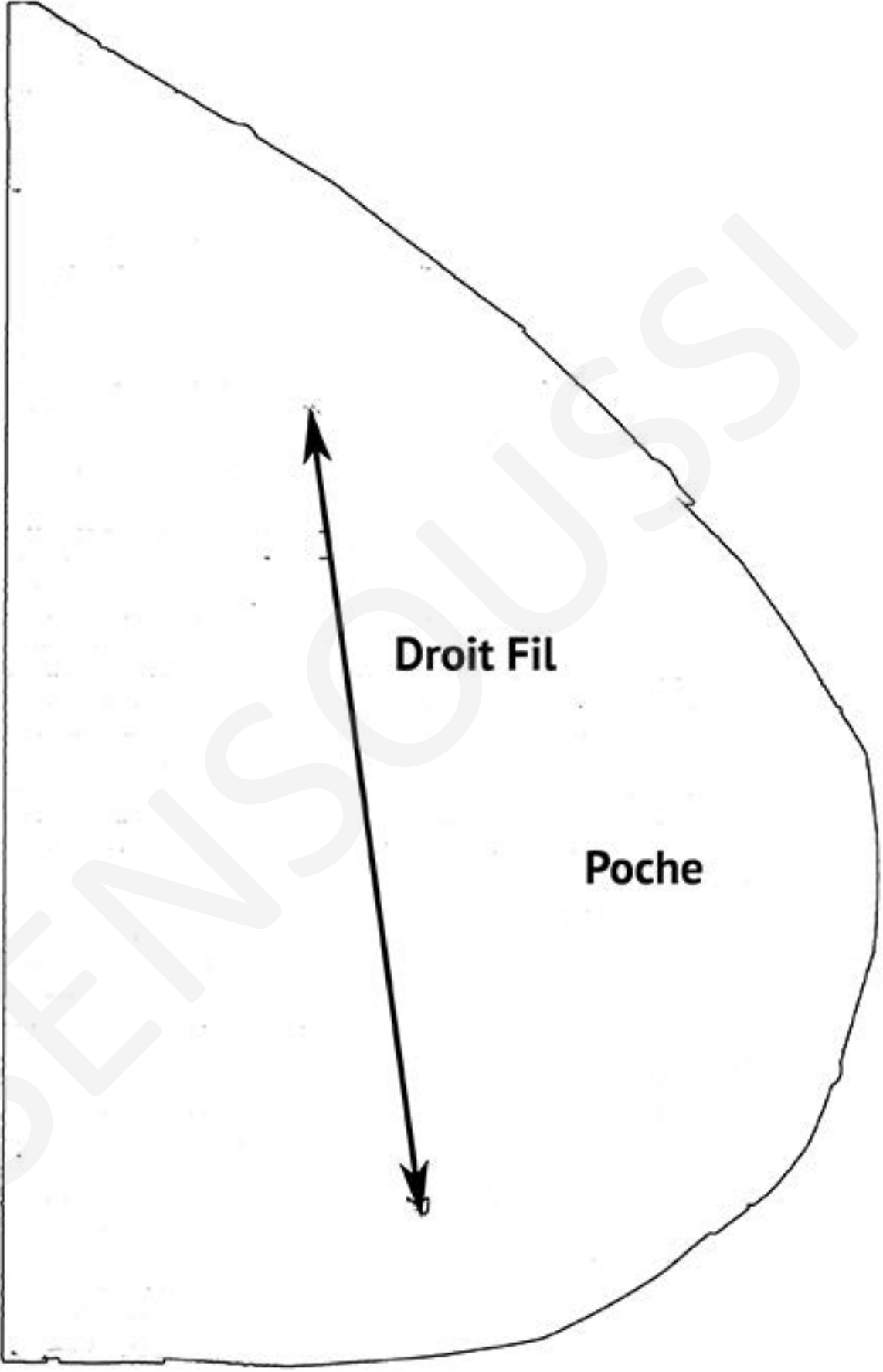


2

Droit Fil

Bretelle 1





Droit Fil

Poche