



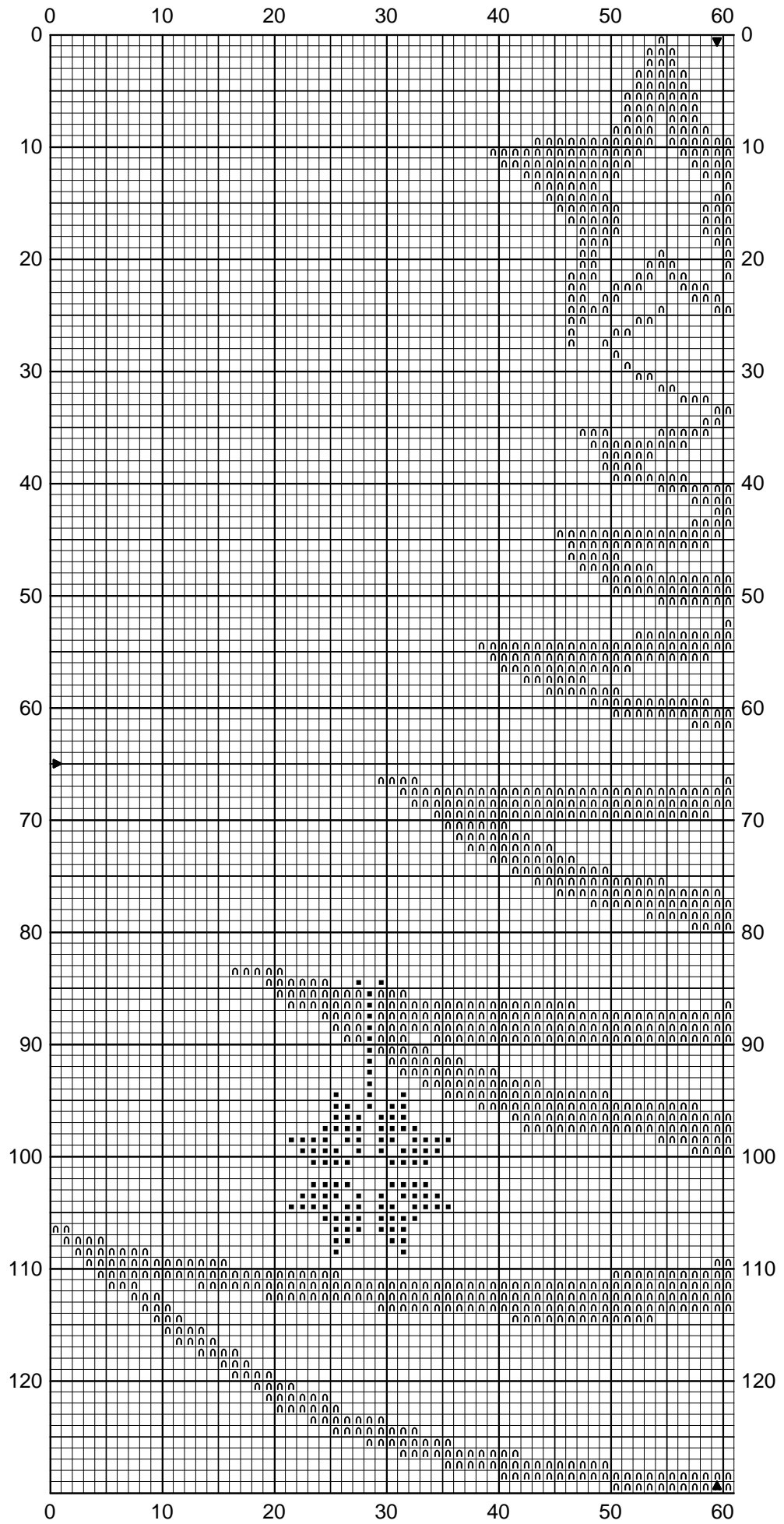
Sapin stylisé

Taille du dessin

17cm par 18,5cm taile 7 points

21,5cm par 23,5cm taile 5.5 points

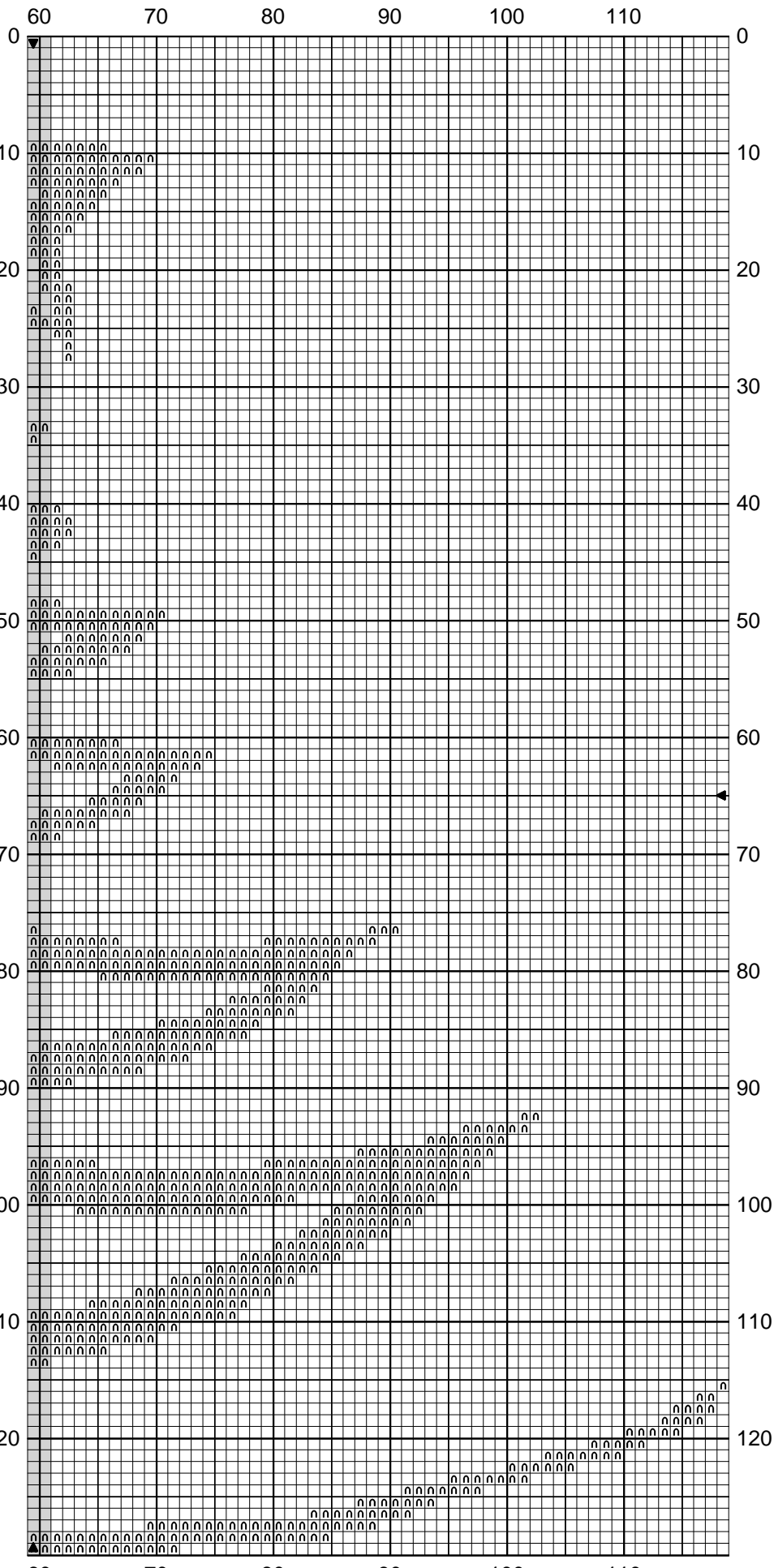
sapin stylisé



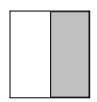
Copyright © Jean-Louis Grandsire ---- www.broderie.net ----



sapin stylisé



Copyright © Jean-Louis Grandsire ---- www.broderie.net ----



sapin stylisé

∩	White bright	DMC B5200	69 cm	0.86 8m Skeins
■	Red vy dk	498	5 cm	0.06 8m Skeins

Stitch Count 119 x 130

Design Area 21.6 x 23.6 cm at 55 sts per 10cm
19.8 x 21.6 cm at 60 sts per 10cm
16.8 x 18.3 cm at 71 sts per 10cm

Note: à broder sur lin bis ou aïda bis

Copyright © By: Jean-Louis Grandsire ---- www.broderie.net ----