

Precious Buds for Thimbles & Things

Embroidered holders for thimbles and special gifts

My mother called hers a “thimble bud” and my great-aunt called hers a “precious pod” as the shape resembled kurrajong seed pods. I have seen them called “thimble pips”, but whatever the name, these charming little holders are just the place to store small treasures. They are also a great way of using up leftover fabric.



Preparation

Materials

- 1, 20cm x 30cm (8in x 4in) piece of 32 count even-weave fabric
- 1, 20cm x 30cm (8in x 4in) piece of poplin or fine-woven cotton for the inner lining
- Floss, in a dark colour to contrast with the even-weave fabric
- 40cm (16in) 5mm (1/4in) decorative ribbon
- Medium weight card
- Fabric glue

Stitches Used

Holbien Stitch (also known as double running stitch or punto scripto)
Smyrna Cross

Use one strand of floss for the stitching

Use a tapestry needle for the embroidery and a sharp needle for making up the buds.

Using the bud templates below, cut out three outer and three inner shapes from the card. Using a card shape as a template, draw 3 outline shapes on each piece of fabric. The shapes should be at least 3cm (1 1/4in) apart, so there will be a 1.5cm (5/8in) turning allowance around each shape.

Use a fading or water-erasable marking pen to draw the shapes. **Don't cut the even weave fabric until the embroidery is finished.**

Stitching

Embroider two outer shapes using holbien stitch on the even-weave fabric. The base (or third) side may be left blank or, if you wish, initial and date the bud using an alphabet of your choice.

Precious Buds for Chimbles & Things

Chart for Side One

One square equals two threads

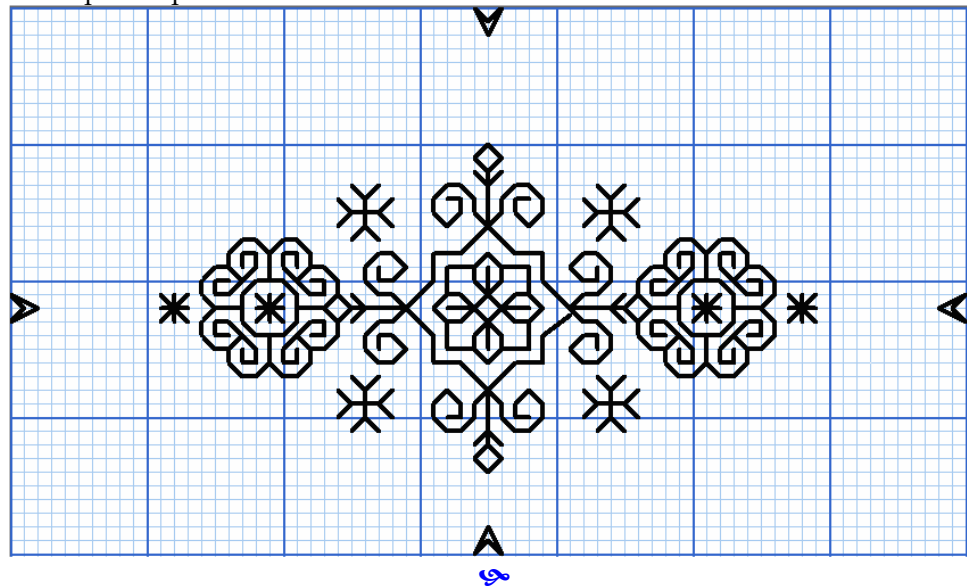
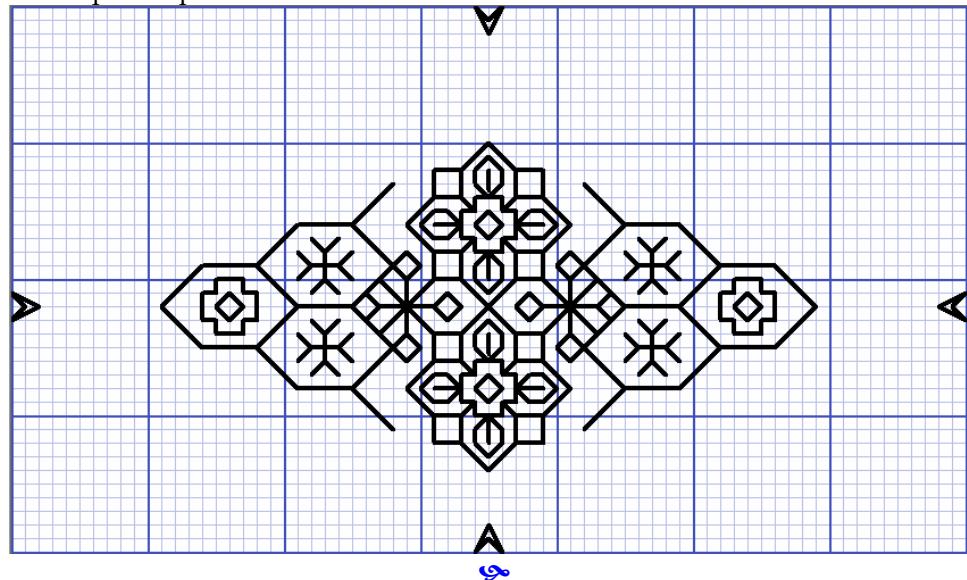


Chart for Side Two

Each square equals two threads



Making up the Shapes

Cut out the bud shapes from each piece of fabric, adding a 1.5cm (5/8in) turning allowance around each shape. You now have to glue each fabric shape to a card shape, even-weave to the larger shape, lining to the smaller one.

Working with care and finishing each shape before beginning the next:

- Put a thin line of glue around one side of the card, about 5mm (1/4in) in from the edge.
- Fold the fabric over the card edge onto the glue and finger-press until it holds. **Check now that the embroidery is in middle of the shape**, correct while the glue is still damp.
- Glue the other side of the shape in the same way
- Place the shapes under a smooth, heavy weight, (a book is good) as each is completed.

Fold the ribbon in half and glue the cut ends on the wrong side of the base (or third) shape. You should glue about 5cm (2in) of each end of the ribbon.

Precious Buds for Chimbles & Things

Finishing the Bud

Once all the shapes are covered join the lining shapes to the outer ones, placing the glue about 1cm in from the edge. Place all the sides back under the heavy weight and leave overnight.

Use a sharp needle and matching machine-sewing thread to stitch the bud sides together. You need to stitch the edges of the embroidered sides to the base and then just join the ends of the embroidered sides so that gap is left to pop the contents through.

- Using the base shape and one side shape, put the wrong sides together (right sides facing out) with the points touching.
- With the thread started out of sight, overcast one edge, pulling the shapes closely together so the stitches do not show.
- Sew the other side shape to the remaining edge of the base shape, taking care to keep the points neat.
- Work a few stitches at each end of the open edge and finish the thread off neatly.

