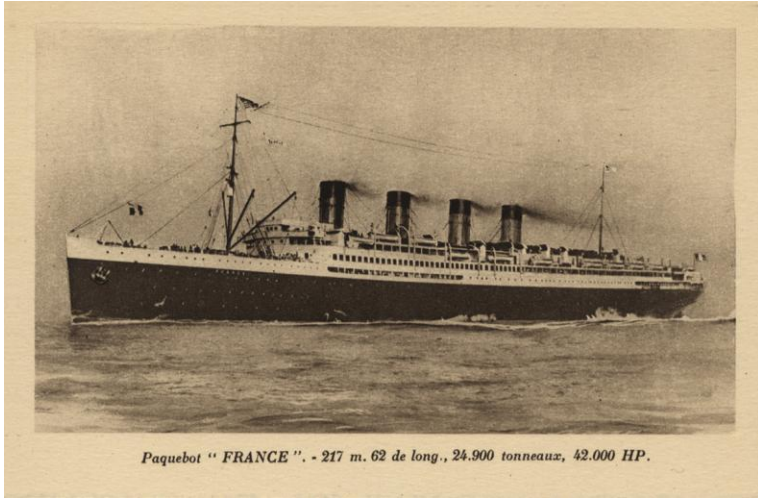


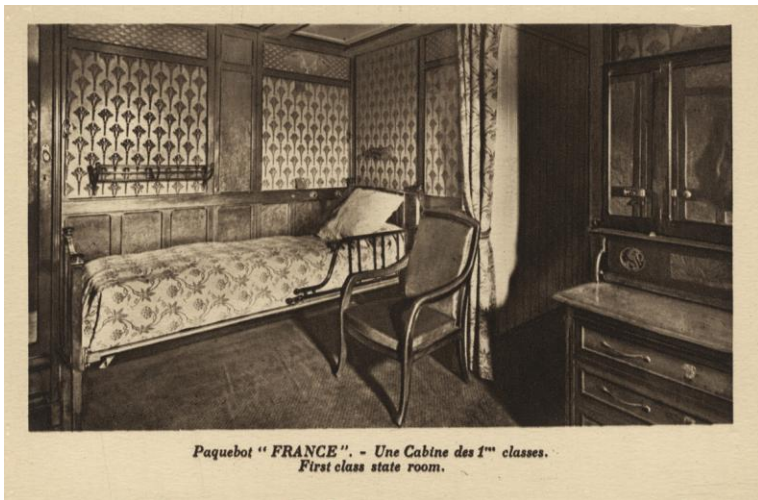
Enveloppe contenant 12 CP



Paquebot "FRANCE". - 217 m. 62 de long., 24.900 tonneaux, 42.000 HP.



Paquebot "FRANCE". - Pont-Promenade des 1^{re} classes. - First class promenade Deck.



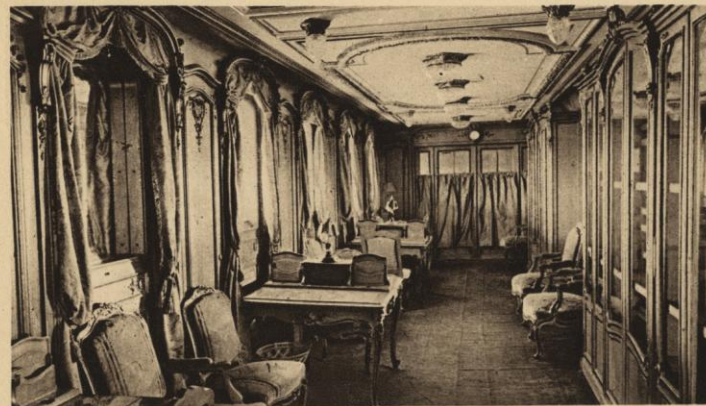
*Paquebot "FRANCE". - Une Cabine des 1^{re} classes.
First class state room.*



*Paquebot "FRANCE". - Galeries des Arts et le Salon Mauresque.
Moorish reception room and gallery.*



Paquebot "FRANCE". - Le Fumoir des 1^{re} classes. - 1st class Smoking room.



*Paquebot "FRANCE". - La Bibliothèque des 1^{re} classes.
First class Library*



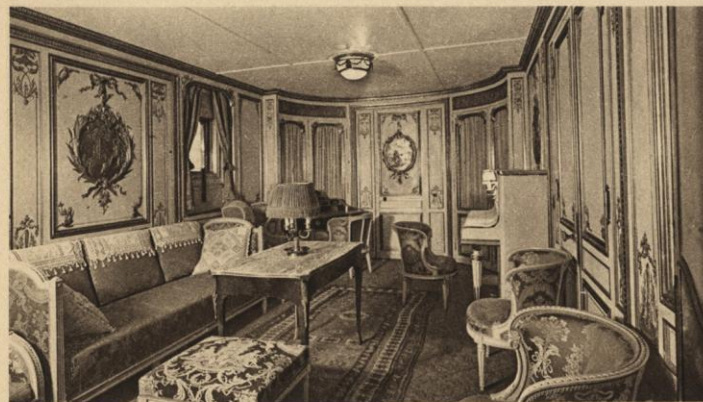
Paquebot "FRANCE". - Le Grand salon Louis XIV. - The lounge.



*Paquebot "FRANCE". - Café Terrasse des 1^{re} classes.
First class cafe Terrace.*



*Paquebot "FRANCE". - La Salle à manger des 1^{re} classes.
First class dining room.*



Paquebot "FRANCE". - Salon de l'appartement de luxe. - "Suite de luxe".



Paquebot "FRANCE", - Salon mixte des 1^{re} classes. - First class drawing room.



Paquebot "FRANCE", - La Rotonde. - The Rotunda.