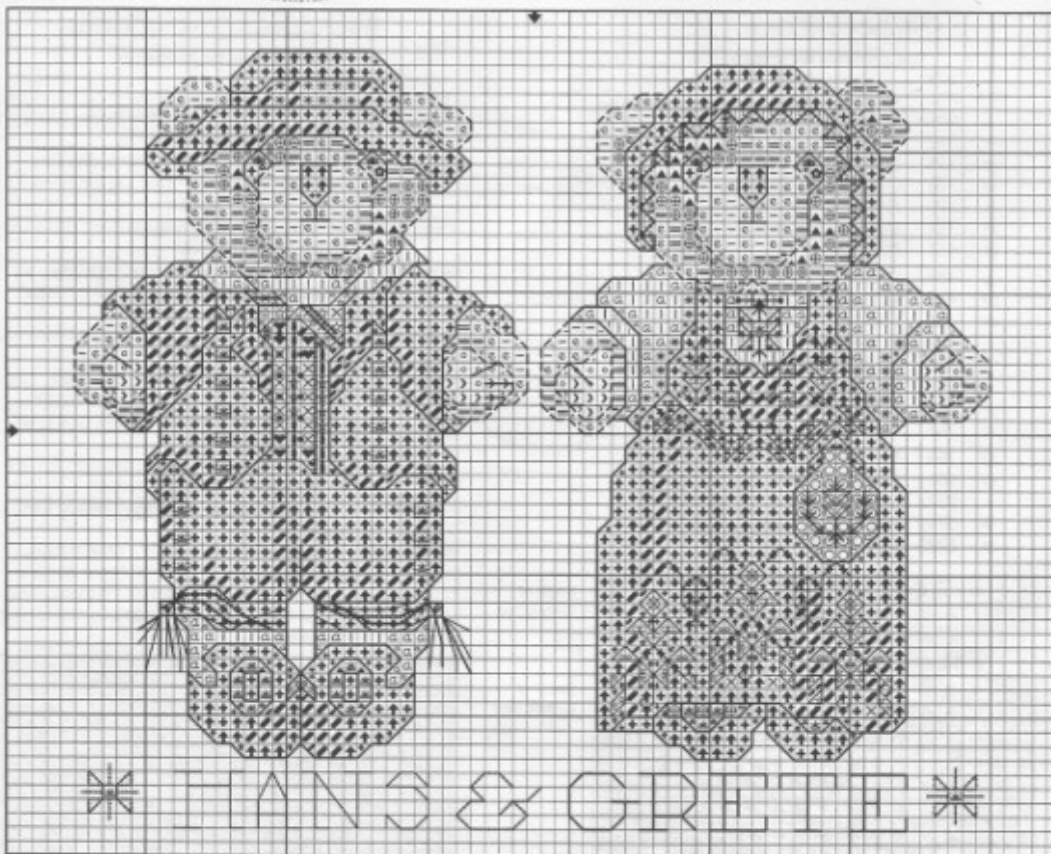




Norway - Hans + Grete

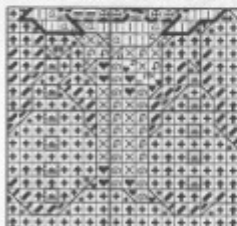


Design, Chart & Instructions by Donna Vermillion Gamba, ©2001,2002 Donna Vermillion Gamba, The Vermillion Stitchery

Special Instructions:

We have included Stitch Counts for individual designs (including the names) as well as for both bears combined. If you stitch a bear separately, the name will have to be centered under the bear. We suggest that you count the number of stitches in the name, plus the stitch count of two name motifs. Compare that total to the width of the bear and divide that difference by 2. If half of that amount is higher than the width of the bear divided by 2, start that number of stitches to the left of the bear. If that number is lower, start the first name motif that number of stitches to the right.
Note: a few bear names don't have motifs due to the length of the names.

Detail of Hans's shirt front without decorative stitching



Fabric Suggestions:

Charles Craft Aida 14, 16 or 18 Count
Zweigart® 28 Count Jubilee, White
Zweigart® 28 Count Lugana/Brittney, White
Zweigart® 28 Count Cashel Linen, White

Stitch Count

St. Ct.	Design Size		Fabric Size	
	W	H	W	H
	65	55	65	55
14 Ct.	4 1/4	x 4	10 1/4	x 10
16 Ct.	4	x 3 1/2	10	x 9 1/2
18 Ct.	3 1/2	x 3	9 1/2	x 9

Hans Stitch Count

St. Ct.	Design Size		Fabric Size	
	W	H	W	H
	32	x 55	32	x 55
14 Ct.	2 1/4	x 4	8 1/4	x 10
16 Ct.	2	x 3 1/2	8	x 9 1/2
18 Ct.	1 3/4	x 3	7 1/4	x 9

Grete Stitch Count

St. Ct.	Design Size		Fabric Size	
	W	H	W	H
	32	x 54	32	x 54
14 Ct.	5	x 3 3/4	11	x 9 3/4
16 Ct.	4 1/4	x 3 1/2	10 1/4	x 9 1/2
18 Ct.	3 3/4	x 3	9 3/4	x 9



23232 Peralta Drive, Suite 217
Laguna Hills, CA 92653-1438
Voice: 949/452-0155 Fax: 949/452-0156
Email: charts@vsccs.com
Website: <http://www.vsccs.com>

* YOU MAY MAKE *
* ONE COPY OF *
* THIS CHART FOR *
* YOUR PERSONAL *
* USE AS A *
* STITCHING AID *

Symbol & Color List

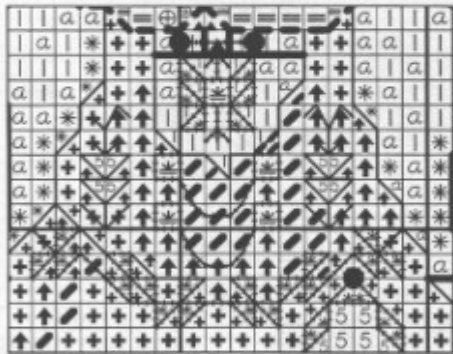
Use 2 Strands for Cross Stitch

Sym	DMC No.	Color
	White	White
+	310	Black
*	318	Lt Steel Grey
o	320	Med Pistachio Green
x	321	Med Dk Christmas Red
o	367	Dk Pistachio Green
p	413	Dk Pewter Grey
▲	434	Lt Brown
⊕	435	Vy Lt Brown
=	436	Med Tan
c	437	Lt Tan
♥	498	Vy Dk Christmas Red
-	738	Vy Lt Tan
>	761	Lt Salmon
α	762	Vy Lt Pearl Grey
○	799	Delft Blue-MID
⊙	801	Dk Coffee Brown
◦	818	Lt Baby Pink
↑	3799	Vy Dk Pewter Grey
≡	5283	DMC Metallic Floss - Silver

Backstitch Instructions

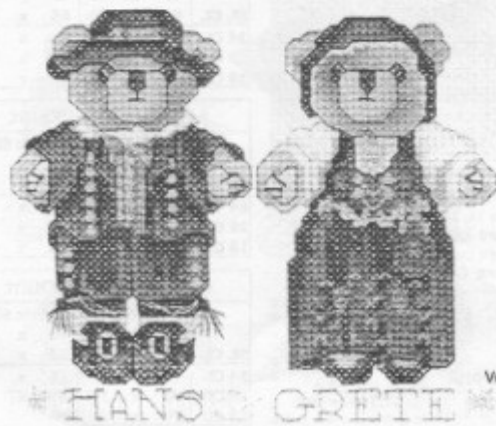
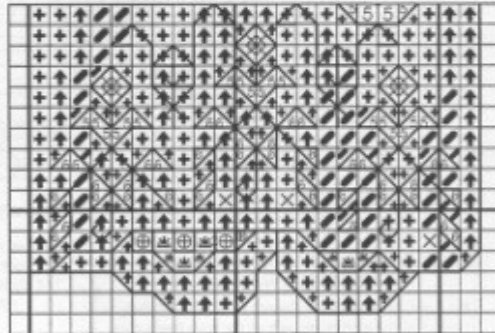
Use 1 Strand for Backstitch

Sym	DMC No.	Color
*****	White	White. Eyespots. Decorative stripes on Hans's shirt; Lacings on Hans's boots
—	310	Black. Both Bears Hats, Shoes, and Paw Lines; Han's Coat & Pants; Grete's Jumper, Purse but not the clasp
—	318	Lt Steel Grey. Both Bears Collars; Han's Leggings; Grete's Sleeves
—	367	Dk Pistachio Green. Part of Embroidery on Grete's purse (U-shape of leaves); "Grete" Name Lettering
—	368	Lt Pistachio Green. Green leaves on flowers on bottom of Grete's jumper
—	498	Vy Dk Christmas Red. Han's Red Vest, Ties on Pants, & "Hans" Lettering; Flower inside U-shape on Grete's Purse; Flowers on top of leaves stitched in 368
—	725	Med Lt Topaz. Two motifs between flowers on the bottom of Grete's Jumper
---	801	Dk Coffee Brown. Both Bears Heads, Ears, & Paws
*****	5283	DMC Metallic Floss - Silver. Shoe Buckles; Buttons on Hans's Jacket & Pants; Grete's Neckpin, Bodice decorations, Buttons, Belt, & Purse Clasp; Ampersand (&) and motifs next to names



Detail of Grete's Top

Detail of Grete's Skirt



 YOU MAY MAKE ONE COPY OF THIS CHART FOR
 YOUR PERSONAL USE AS A STITCHING AID

You have our permission to make one copy of this chart for your Personal Use Only. This design is not to be used for any commercial purpose, nor is this design to be Rechartered, Kitted, Sold, Modified, Redistributed or Shared on paper or any other medium, including posting to the internet, without express written permission from The Vermillion Stitchery. Please help us protect our copyright.

 Visit our web site at <http://www.vscs.com>

23232 Peralta Drive, Suite 217
 Laguna Hills, CA 92653-1438
 Voice: 949/452-0155 Fax: 949/452-0156
 Email: charts@vscs.com
 Website: <http://www.vscs.com>

