

EMS Project 2009 "Advent #22"



© 2009 Ellen Maurer-Stroh
All rights reserved.

Fabric: 14/28 count

Colors: DMC

Stitches: 52 x 45

Size: 3.7 x 3.2 inches or 9,4 x 8,2 cm

Use 3 strands of thread for cross stitch on 14/28ct. Use 2 strands of thread for cross stitch on 16/32ct.

Sym	No.	Color Name	Sym	No.	Color Name	Sym	No.	Color Name
■	310	Black	■	336	Navy blue	○	353	Peach flesh
■	436	Tan	■	437	Tan - lt	●	666	Xmas red - bright
	738	Tan - vy lt	／	739	Tan - ul vy lt	★	741	Tangerine - med
×	742	Tangerine - lt	■	793	Cornflower bl - md	▼	794	Cornflower blue - lt
⋯	800	Delft - pale	■	803	Baby blue - ul vy dk	■	987	Forest green - dk
S	988	Forest green - md	-		Blanc White			

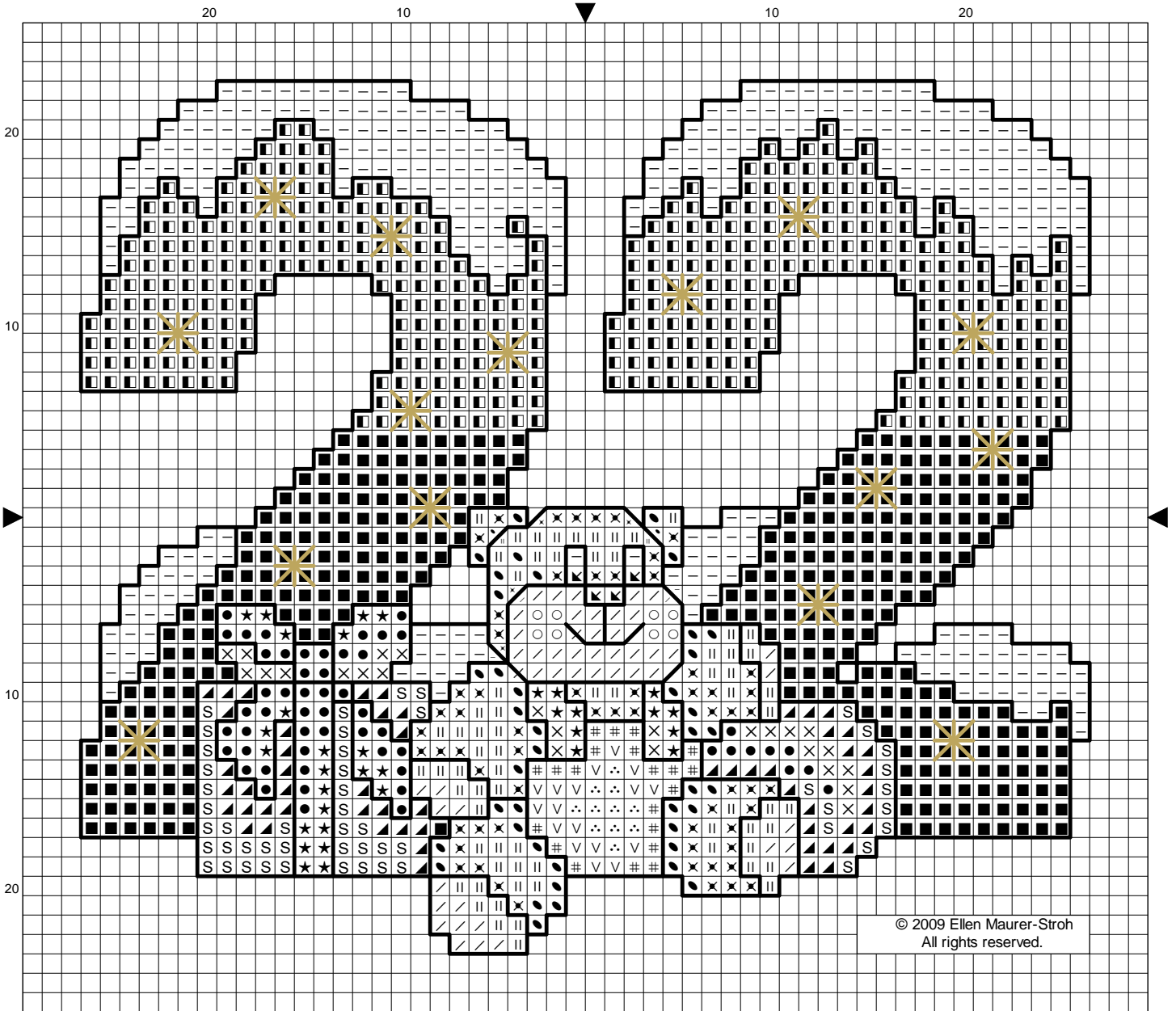
Use 1 strand of thread for black backstitch. Use 2 strands of metallic gold for the star stitches.

—	310	Black	-	for all backstitches
—	5284	Metallic Gold	-	for star-stitches

© 2009 Ellen Maurer-Stroh. All rights reserved.

This complimentary chart is designed by me, Ellen Maurer-Stroh. Although given for 'free', please note that the design is copyright protected. Feel free to download one copy of the design for yourself. The chart may not be kitted or sold. It's not allowed to use this design to put on your own webpage. Distributing the chart via e-mail or posting the pattern on a forum or message board is against the copyright law. Please respect my copyright. Thanks and enjoy stitching!

EMS Project 2009 "Advent #22"



© 2009 Ellen Maurer-Stroh
All rights reserved.

Fabric: 14/28 count Colors: DMC Stitches: 52 x 45 Size: 3.7 x 3.2 inches or 9,4 x 8,2 cm
Use 3 strands of thread for cross stitch on 14/28ct. Use 2 strands of thread for cross stitch on 16/32ct.

Sym	No.	Color Name	Sym	No.	Color Name	Sym	No.	Color Name
◀	310	Black	■	336	Navy blue	○	353	Peach flesh
●	436	Tan	×	437	Tan - lt	●	666	Xmas red - bright
	738	Tan - vy lt	/	739	Tan - ul vy lt	★	741	Tangerine - med
×	742	Tangerine - lt	#	793	Cornflower bl - md	∇	794	Cornflower blue - lt
∴	800	Delft - pale	□	803	Baby blue - ul vy dk	▲	987	Forest green - dk
S	988	Forest green - md	-		Blanc White			

Use 1 strand of thread for black backstitch. Use 2 strands of metallic gold for the star stitches.

- 310 Black - for all backstitches
- 5284 Metallic Gold - for star-stitches

© 2009 Ellen Maurer-Stroh. All rights reserved.

This complimentary chart is designed by me, Ellen Maurer-Stroh. Although given for 'free', please note that the design is copyright protected. Feel free to download one copy of the design for yourself. The chart may not be kitted or sold. It's not allowed to use this design to put on your own webpage. Distributing the chart via e-mail or posting the pattern on a forum or message board is against the copyright law. Please respect my copyright. Thanks and enjoy stitching!