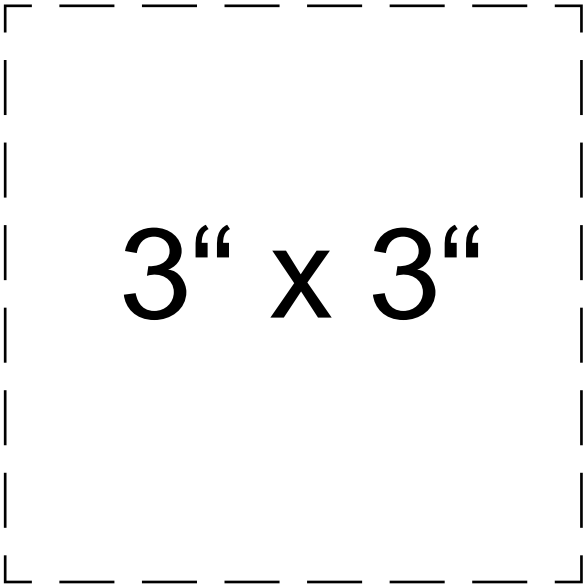
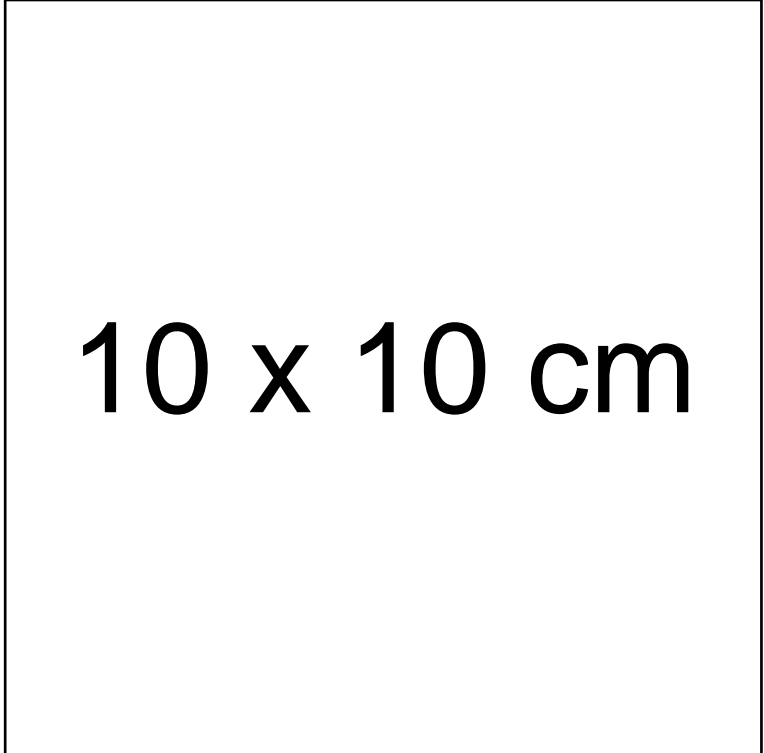


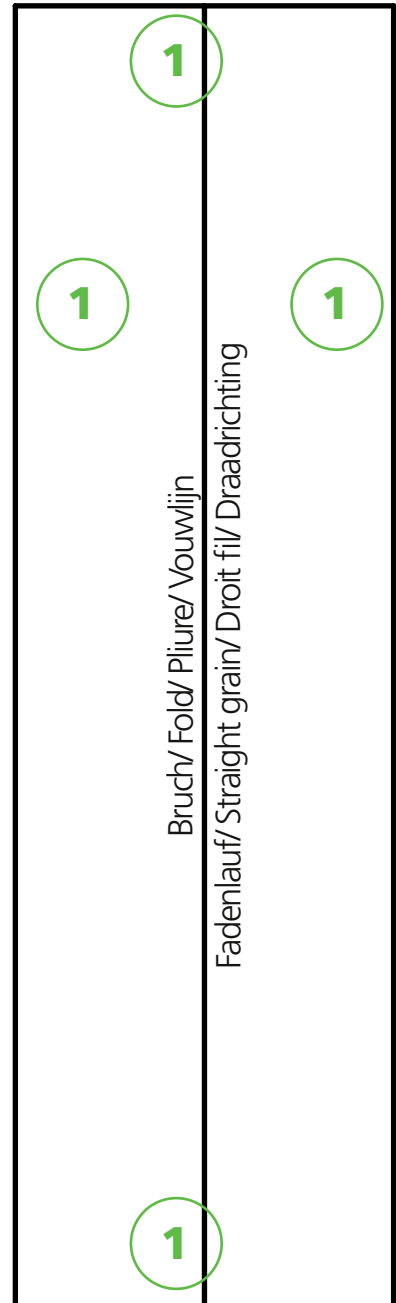
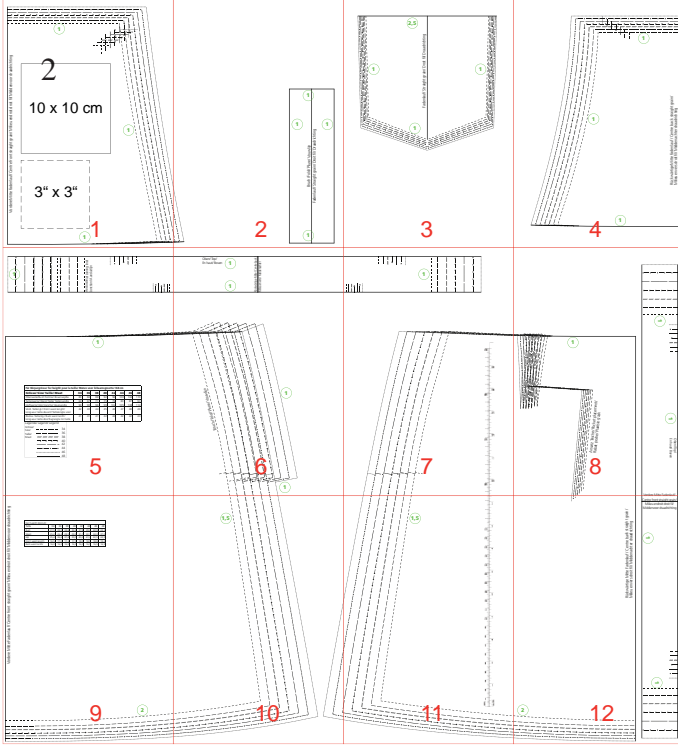
Vordere Mitte Fadenlauf/ Centre front straight grain/ Milieu endroit droit fil/ Middenvoor draadrichting



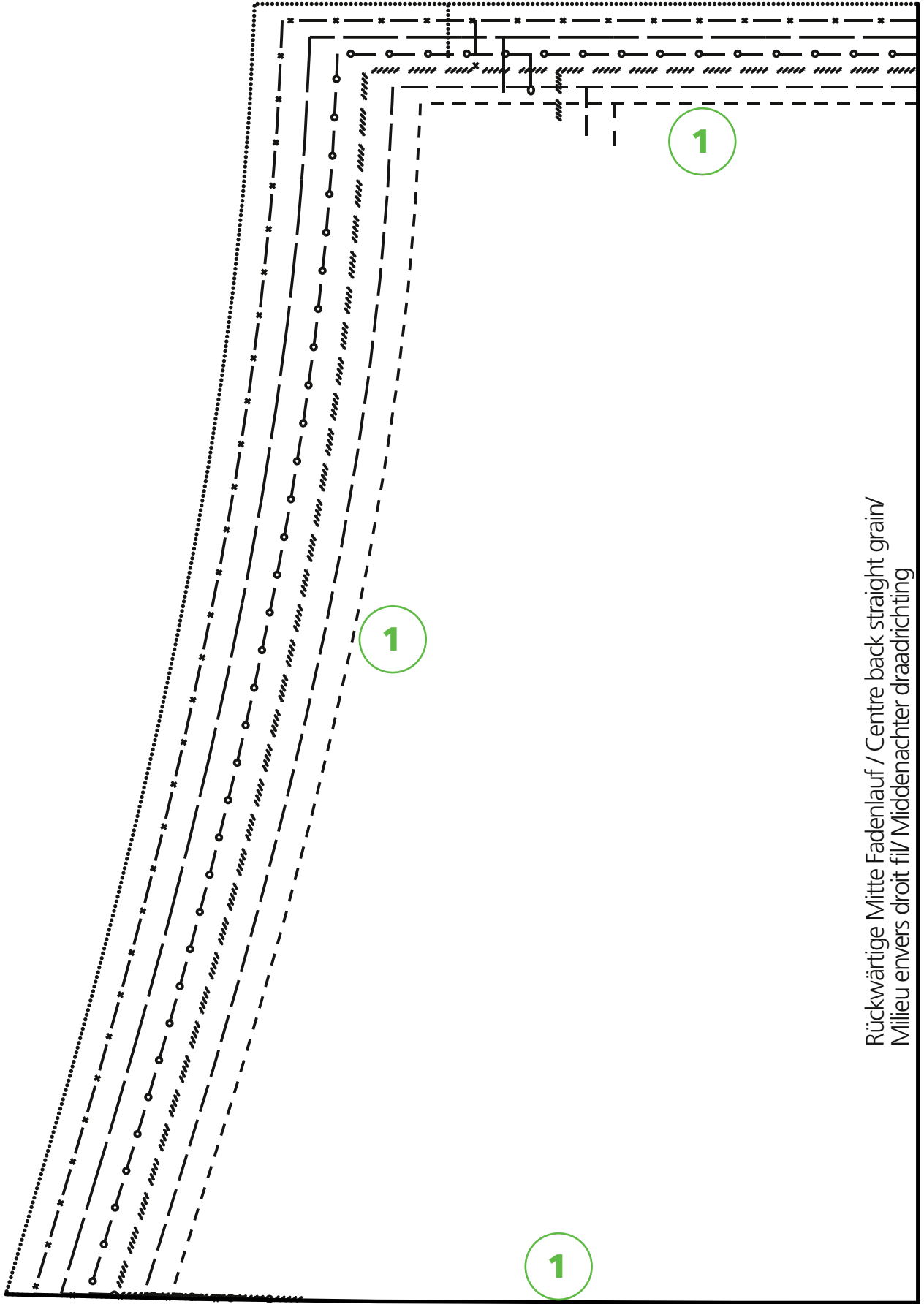
1

1

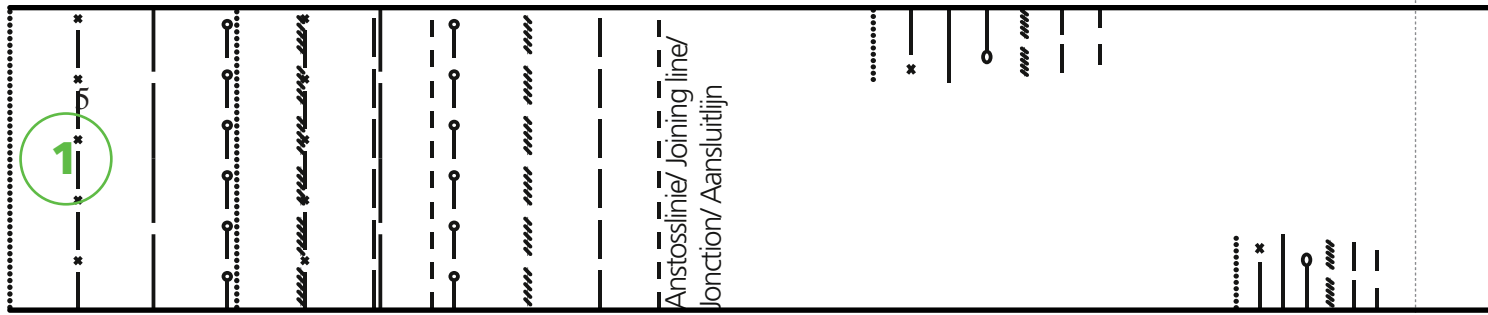
1







Rückwärtige Mitte Fadenlauf / Centre back straight grain/  
Milieu envers droit fil / Middenachter draadrichting



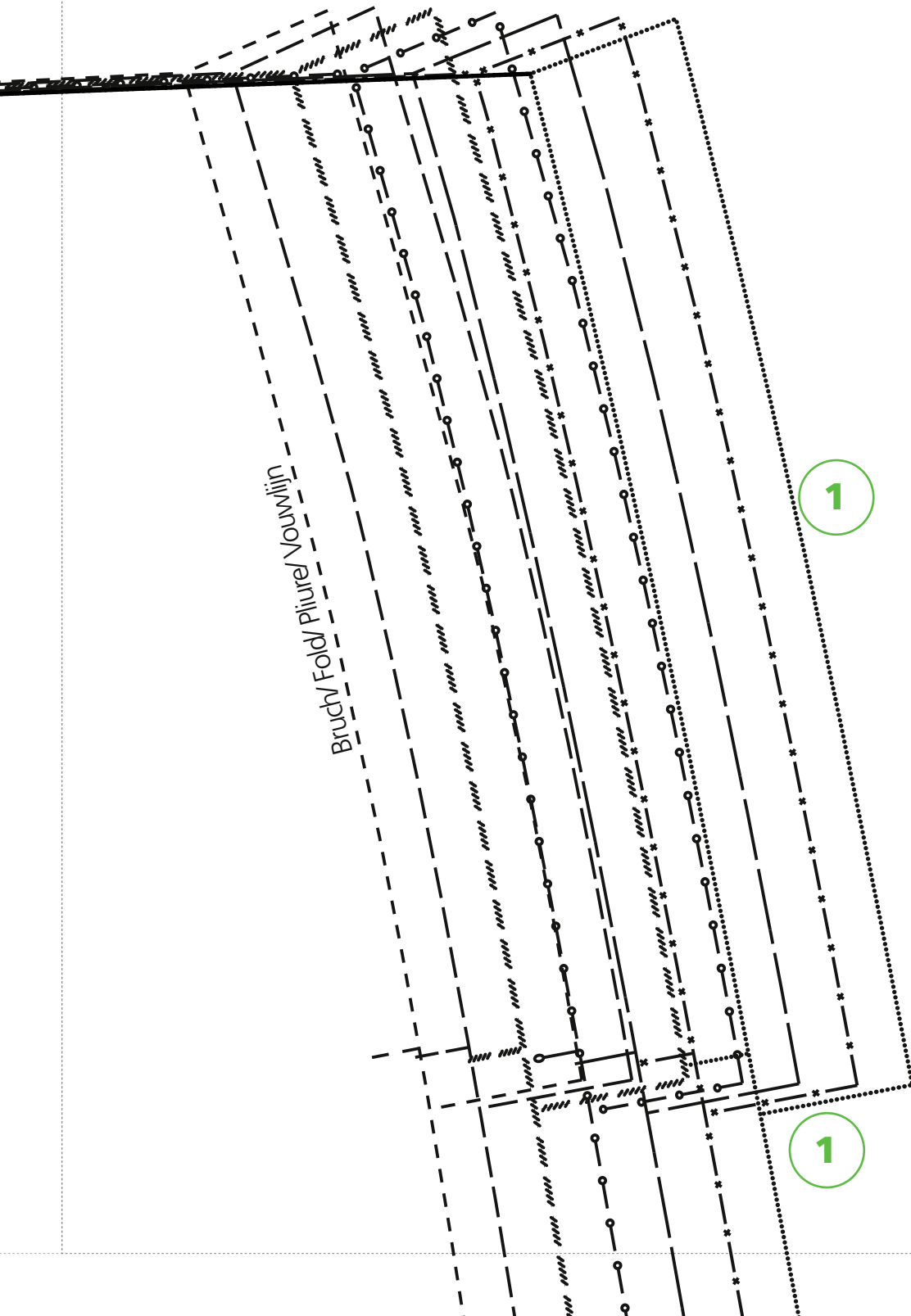
1

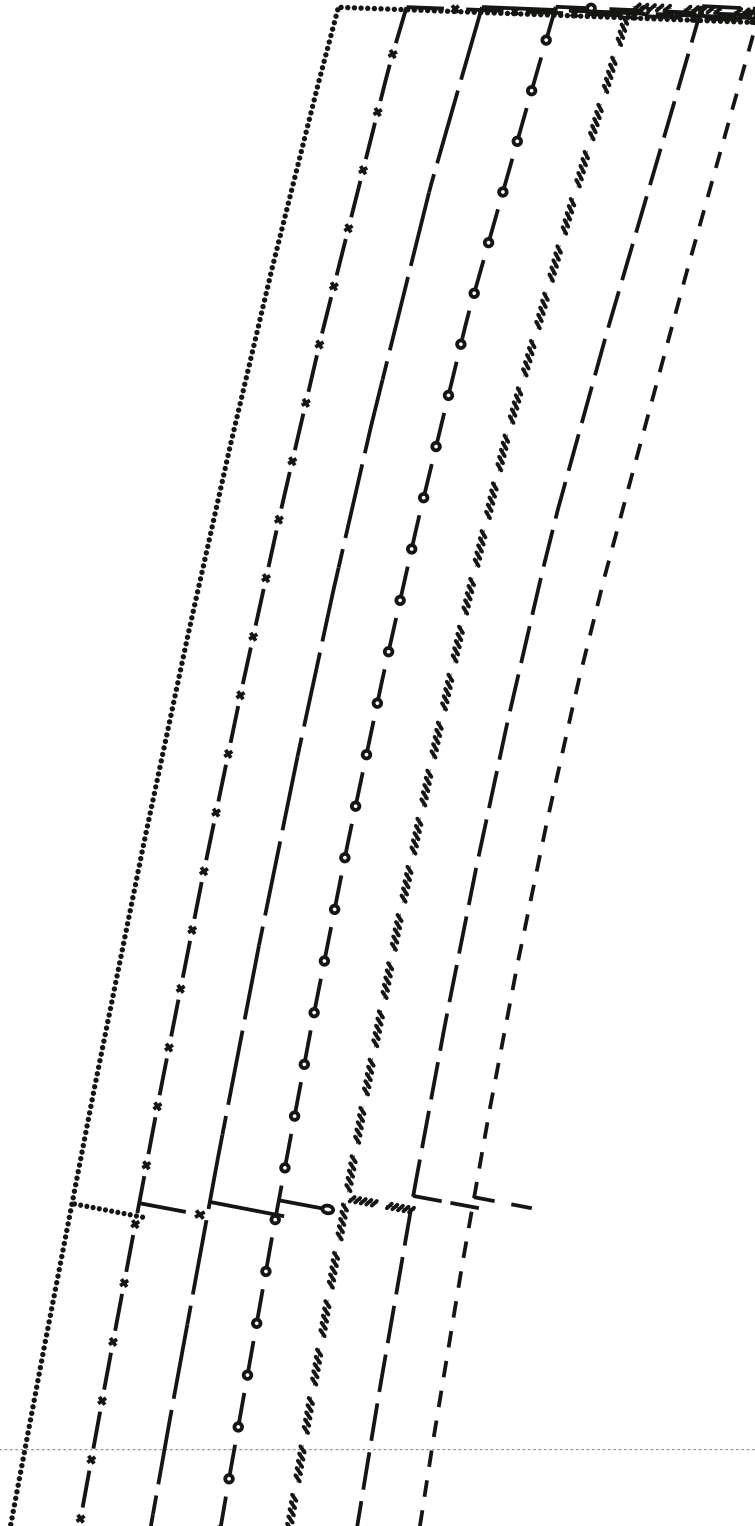
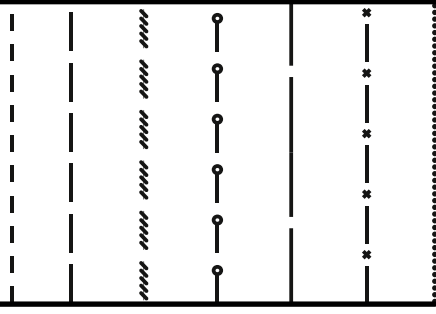
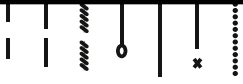
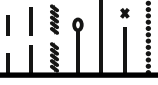
Für Körpergröße/ for heighth/ pour la taille/ Maten voor lichaamsgrootte 168 cm								
Grösse/ Size/ Taille/ Maat	34	36	38	40	42	44	46	48
Oberweite/Bust/ Poitrine/ Bovenwijdte	80	84	88	92	96	100	104	110
Tailenweite/ Waist/ Taille/ Tailenwijdte	64	67	71	75	79	83	87	93
Hüftweite/ Hip/ Hanche/ Heupwijdte	90	93	96	99	102	105	108	114
Vord. Taillengl./ Front waist length/ Longueur taille devant/ Taillelengte voor	42	43	44	45	46	47	48	49
Rückw. Taillengl./ Back waist lenth/ Longueur taille dos/ Ruglengte tot taille	41	41	41	42	42	42	42	43

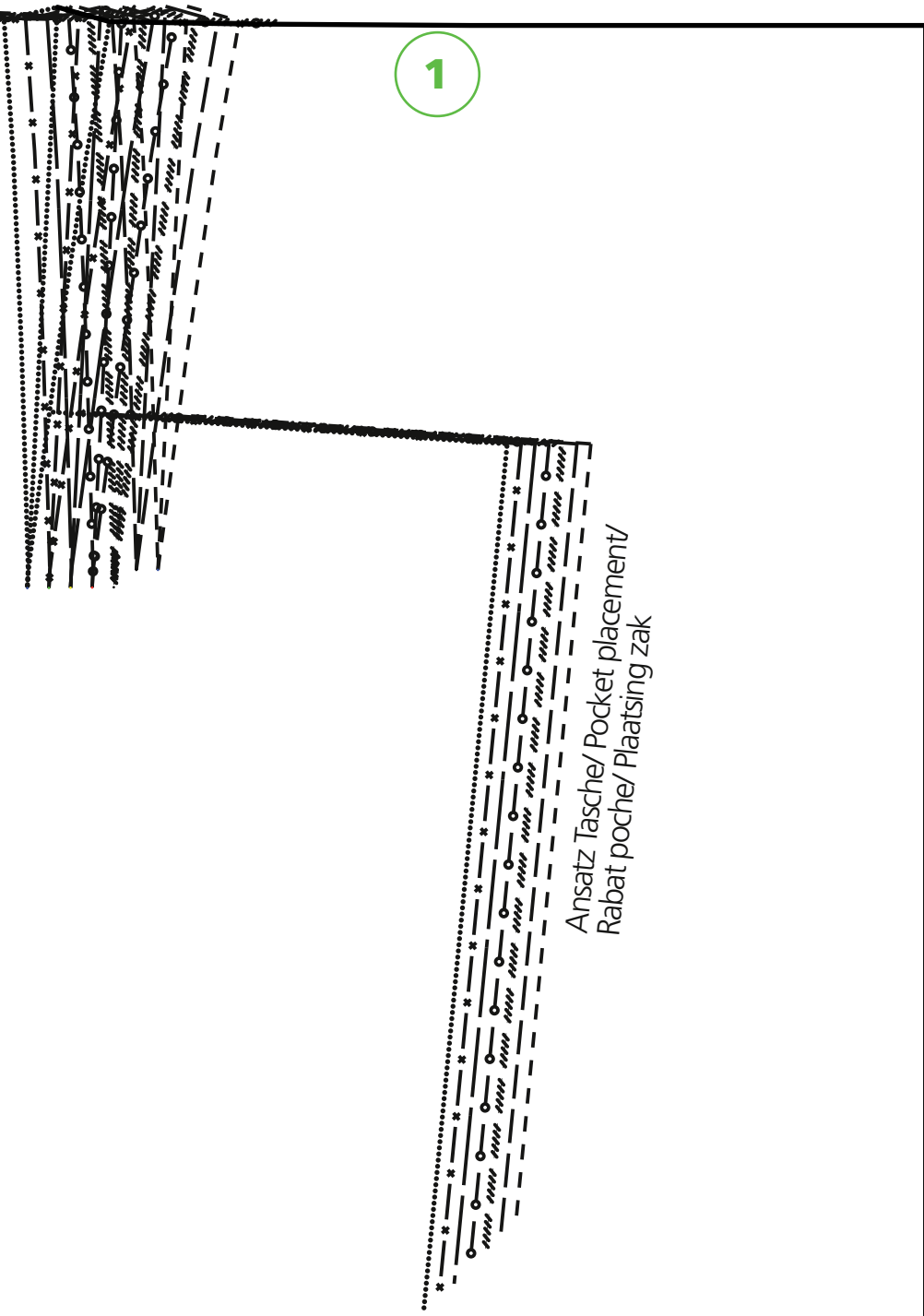
Legende/ Legend/ Légend	
Grösse/	
Size/	--- 34
Taille/	— 36
Maat	38
	—○—○—○—○ 40
	— 42
	— * — * — * 44
	..... 46
	— 48



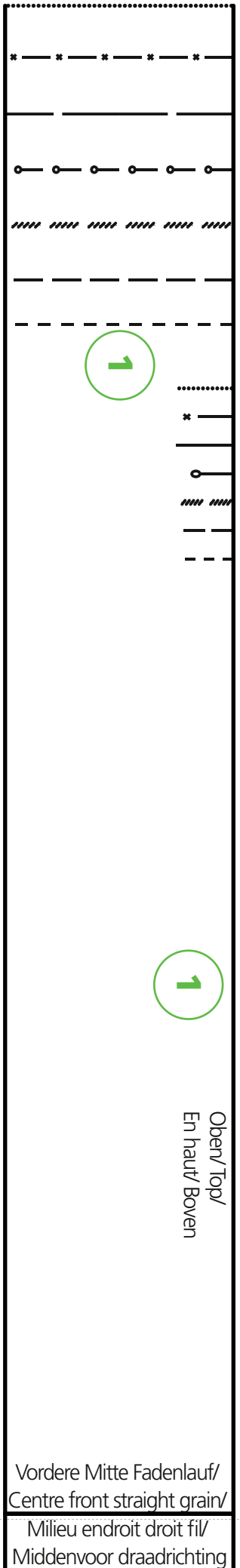
Bruch/ Fold/ Pliure/ Vouwlijn







Ansatz Tasche/ Pocket placement/  
 Rabat poche/ Plaatsing zak



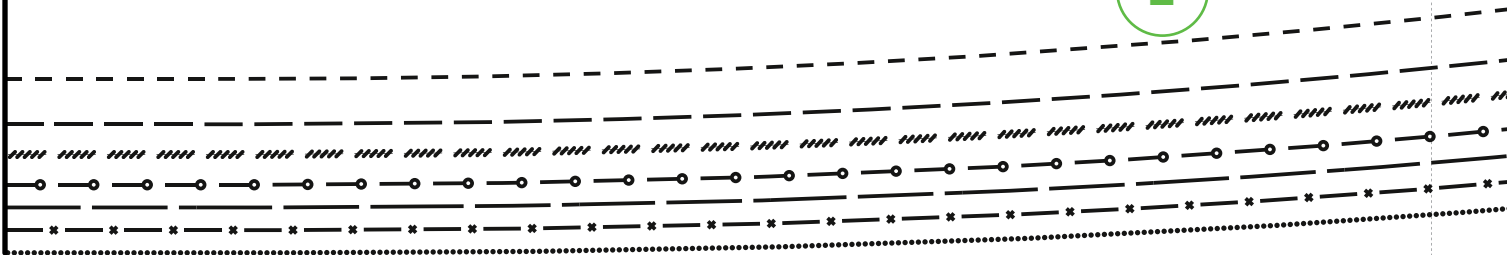
Oben/ Top/  
 En haut/ Boven

Vordere Mitte Fadenlauf/  
 Centre front straight grain/  
 Milieu endroit droit fil/  
 Middenvoor draadrichting

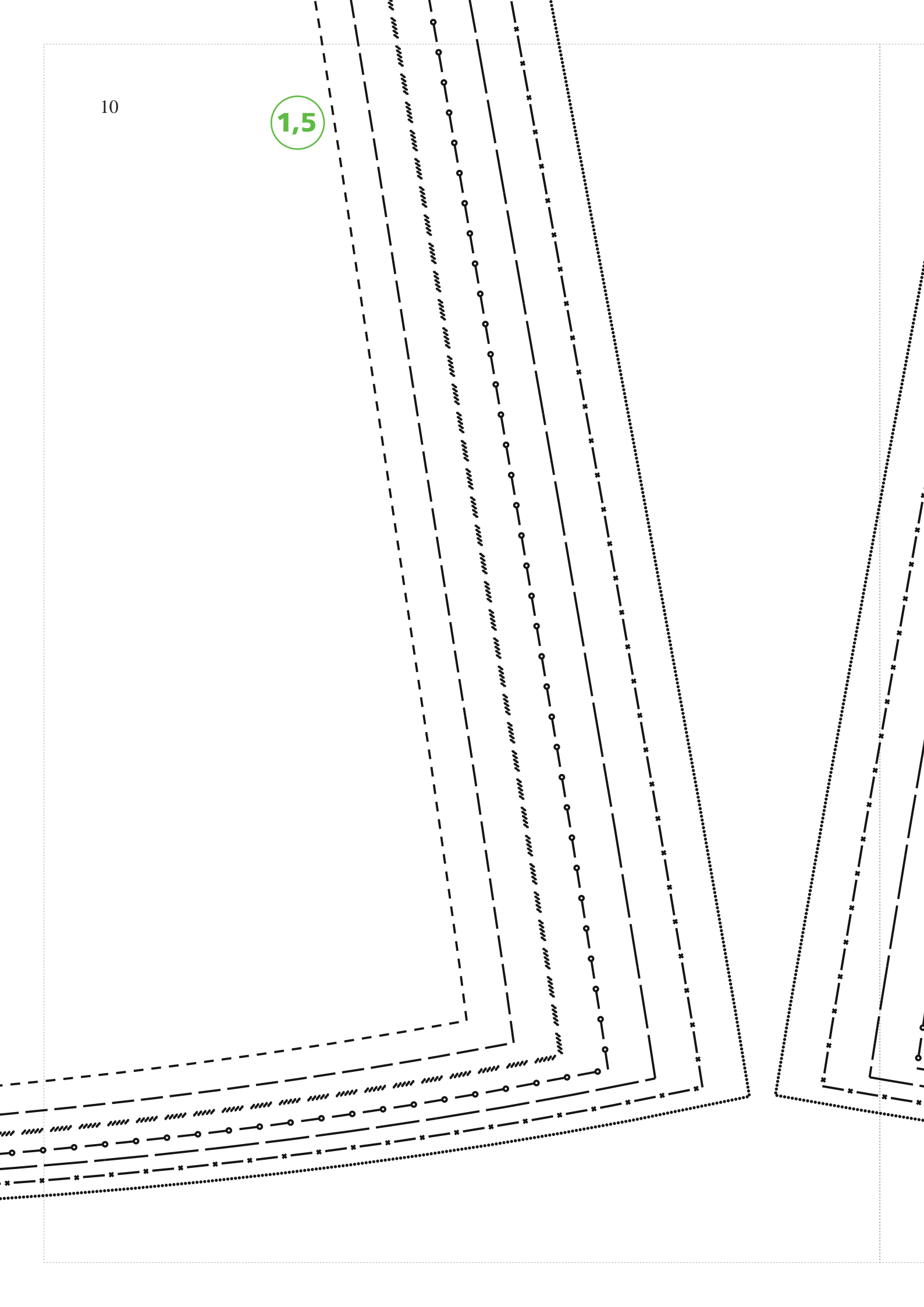


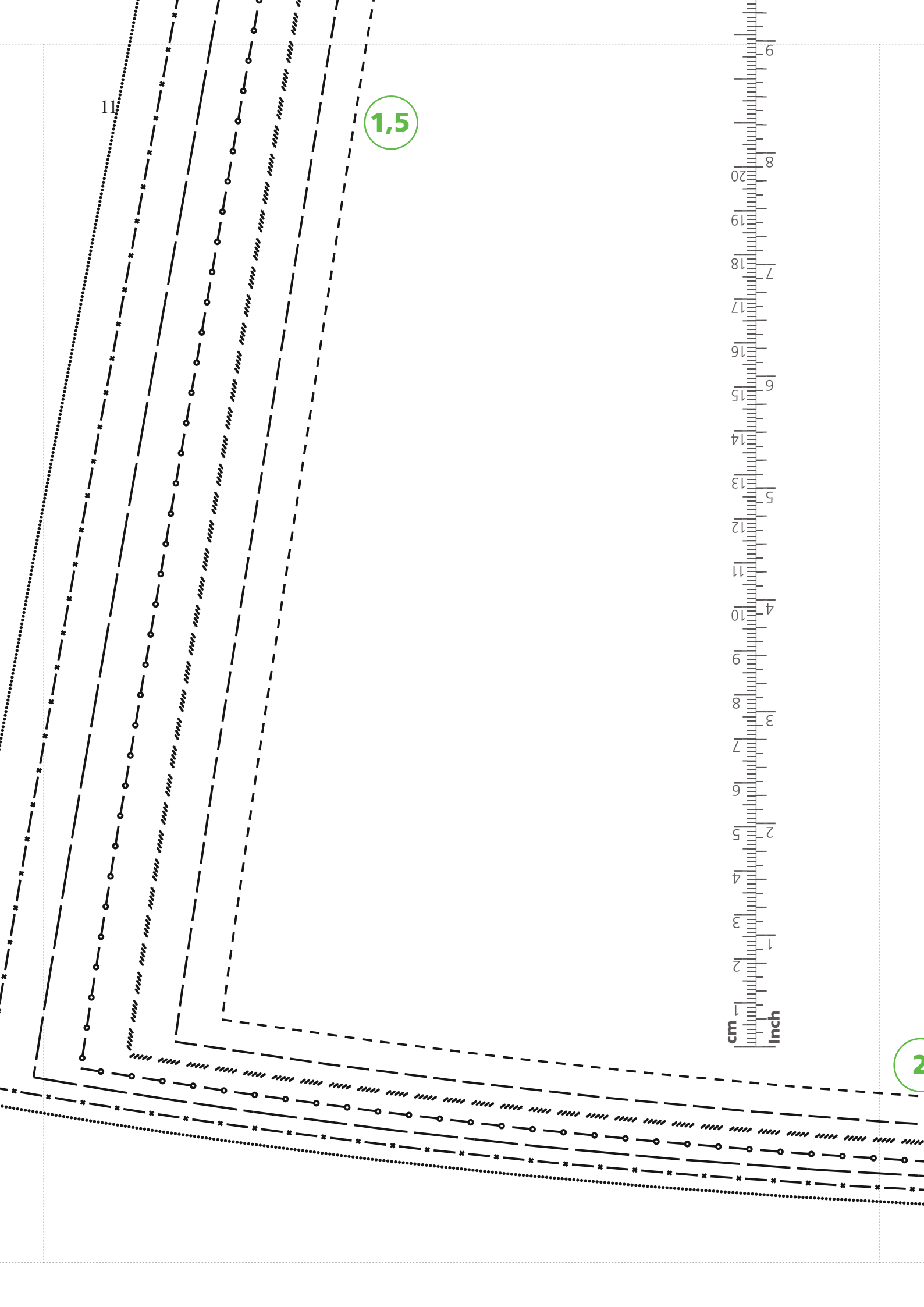
For heigth 66 Inch:								
Taille	34	36	38	40	42	44	46	48
Bust	31,5	33,0	34,6	36,2	37,8	39,4	40,9	43,3
Waist	25,2	26,4	28,0	29,5	31,1	32,7	34,3	37,0
Hip	35,4	36,6	37,8	39,0	40,2	41,3	42,5	44,9
Front waist length	16,5	17,0	17,3	17,7	18,0	18,5	18,9	19,2
Back waist lenth/	16,0	16,0	16,0	16,5	16,5	16,5	16,5	16,9

2



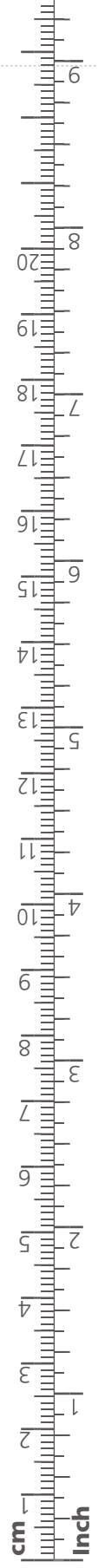
1,5





1

1,5



2

Rückwärtige Mitte Fadenlauf / Centre back straight grain /  
Milieu envers droit fil / Middenachter draadrichting

Vordere Mitte Fadenlauf /  
Centre front straight grain /  
Milieu endroit droit fil /  
Middenvoor draadrichting

