



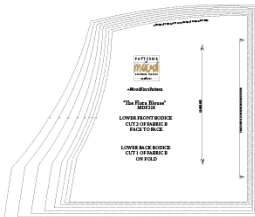
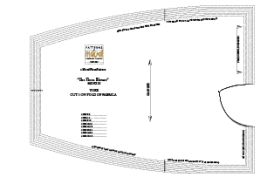
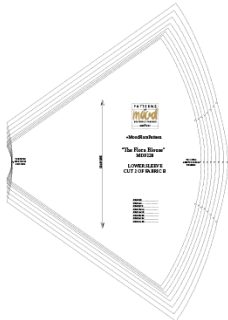
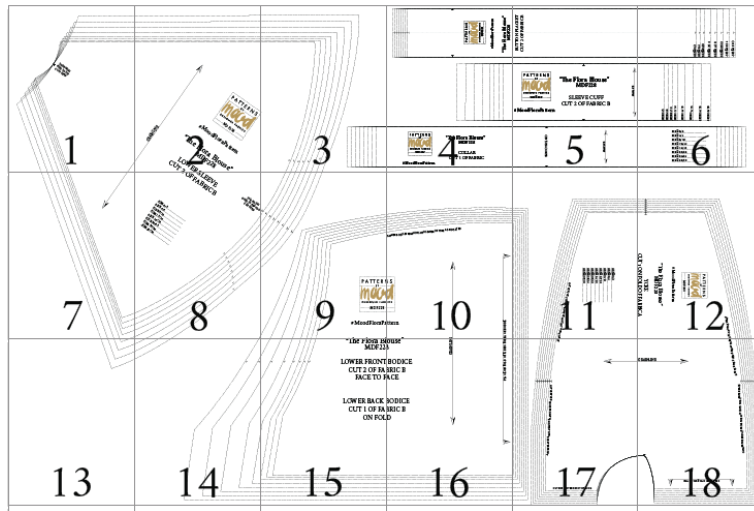
“The Flora Blouse”

Sizes 0/2 to 28/30

Stop!

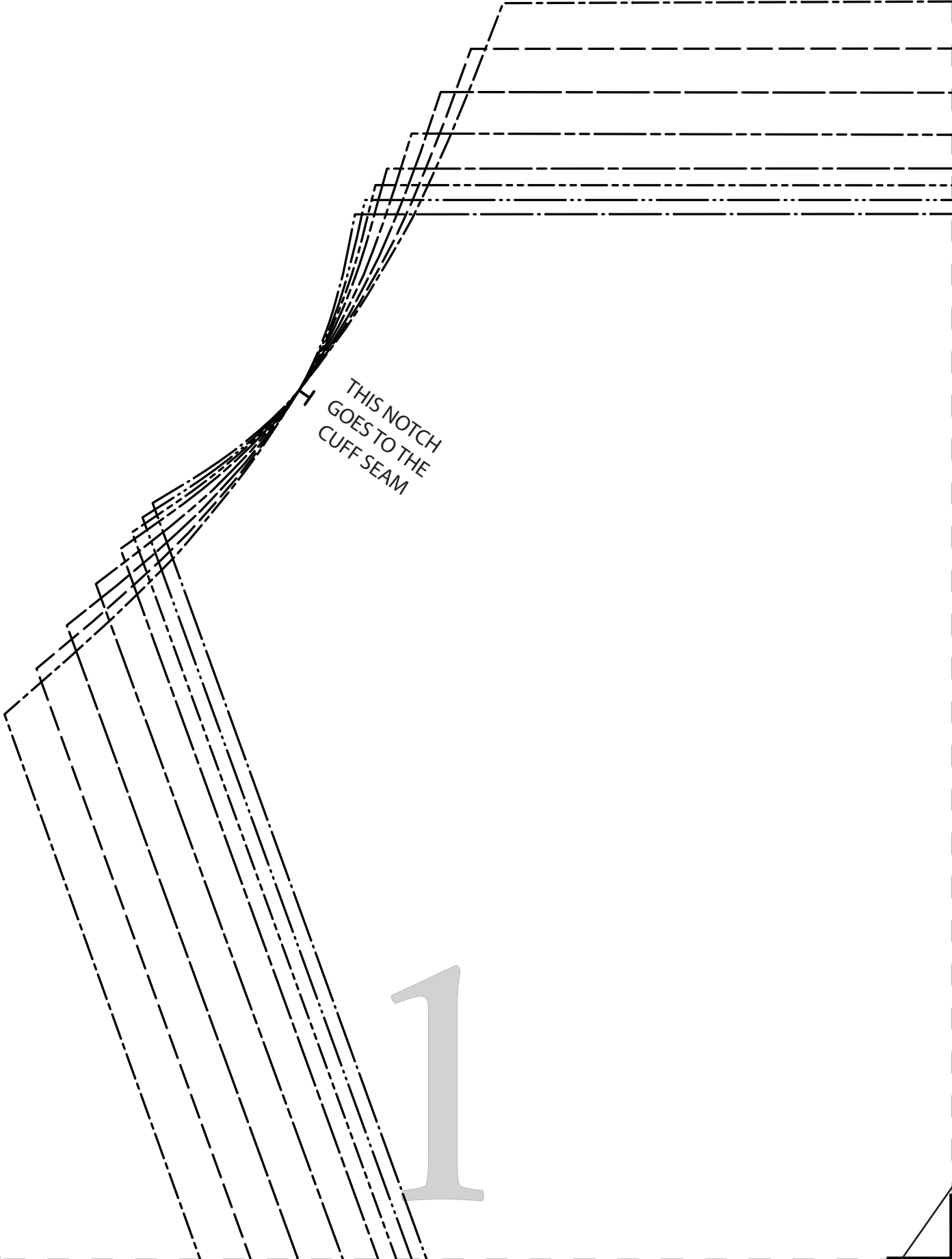
Print just this page first to check accuracy. The Mood square to the left should measure 2 inches. Print “actual size” (no scaling).

#MoodFloraPattern



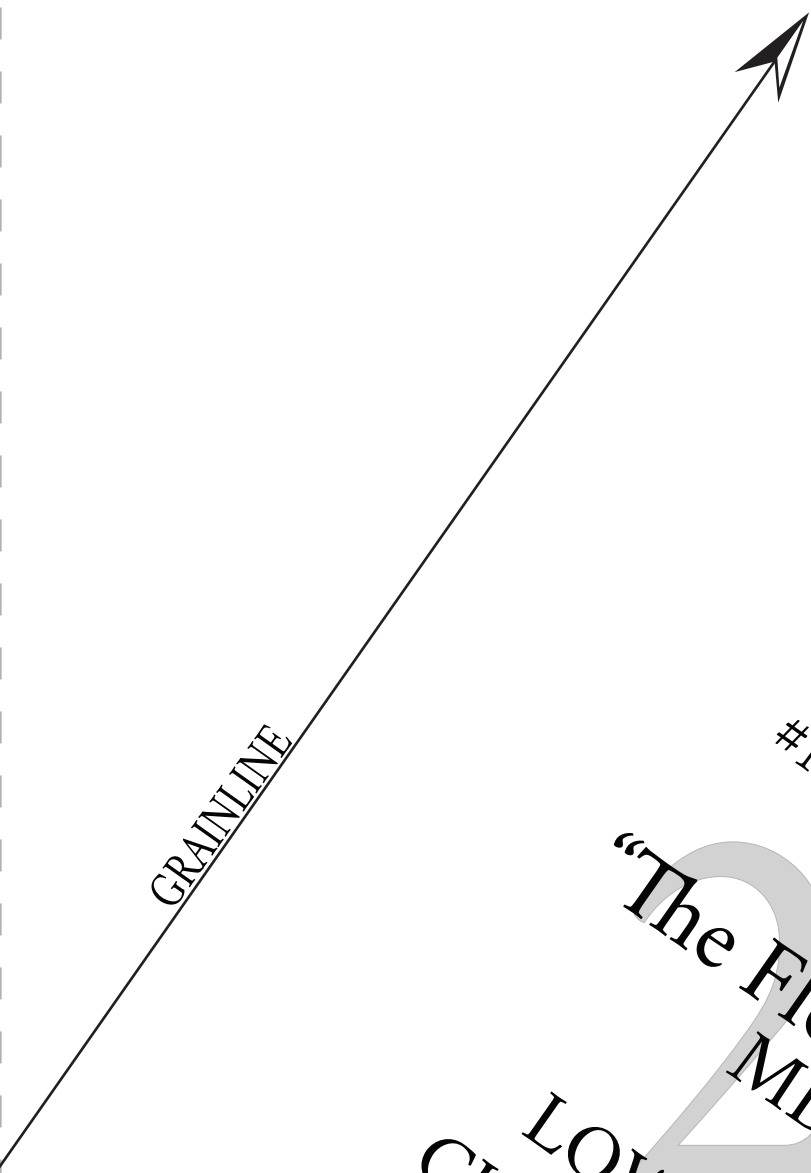
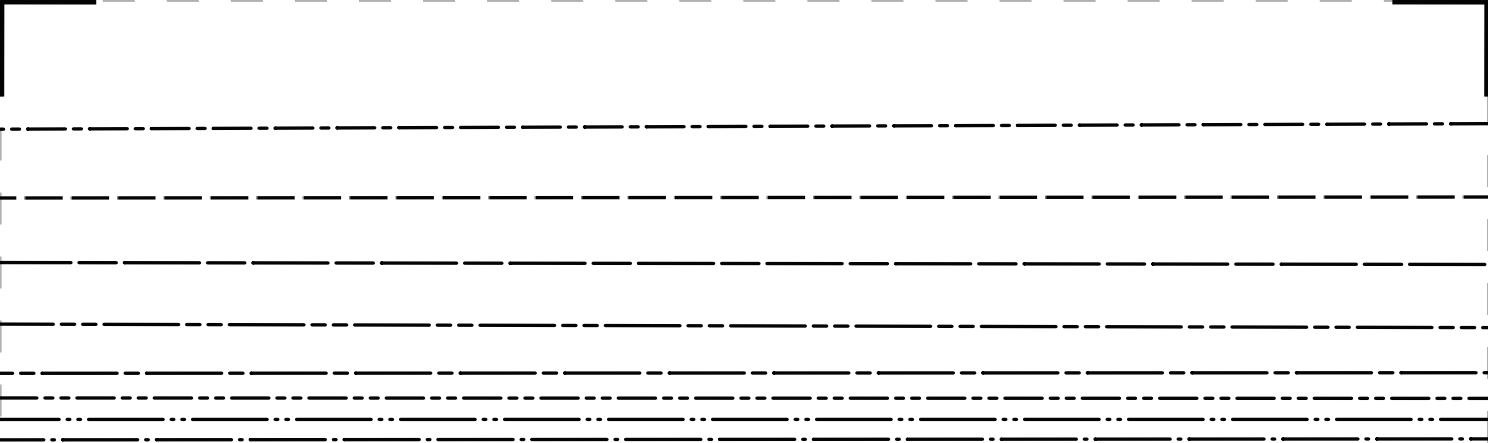
INVENTORY

- YOKE, CUT 1 ON FOLD OF FABRIC A
- LOWER FRONT, CUT 2 OF FABRIC B
- LOWER BACK, CUT 1 ON FOLD OF FABRIC B
- LOWER SLEEVE, CUT 2 OF FABRIC B
- BUTTON PLACKET, CUT 2 OF FABRIC B
- SLEEVE CUFF, CUT 2 OF FABRIC B
- COLLAR, CUT 1 OF FABRIC B



H
THIS NOTCH
GOES TO THE
CUFF SEAM

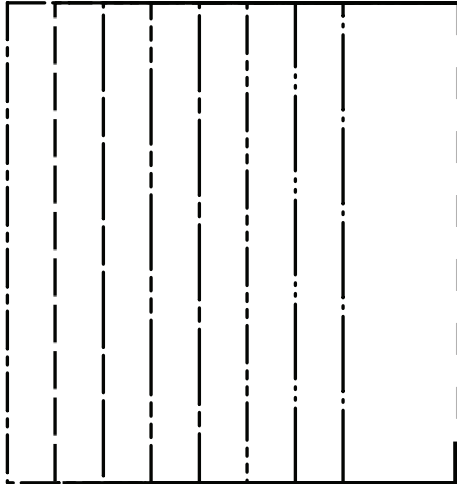
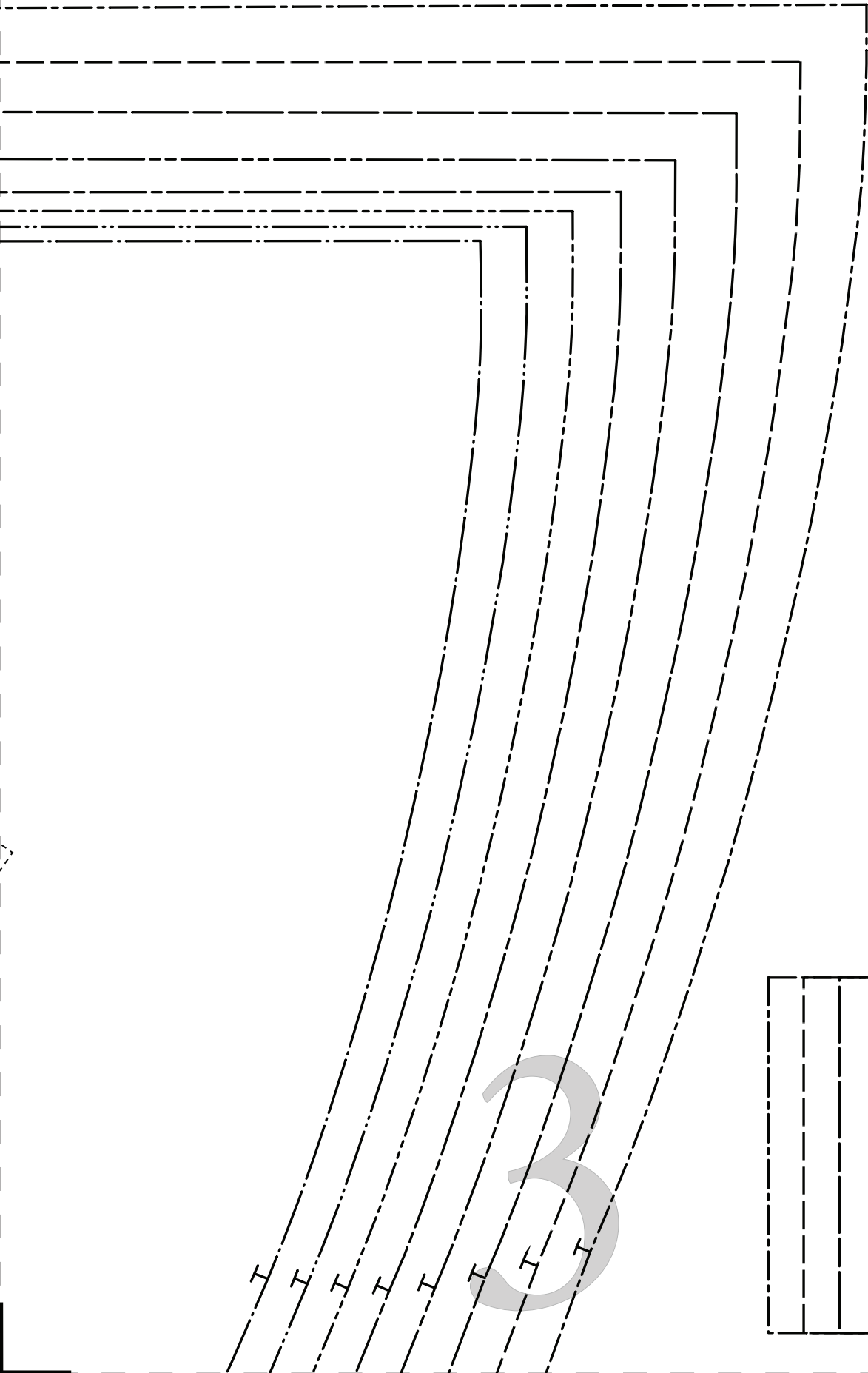
1

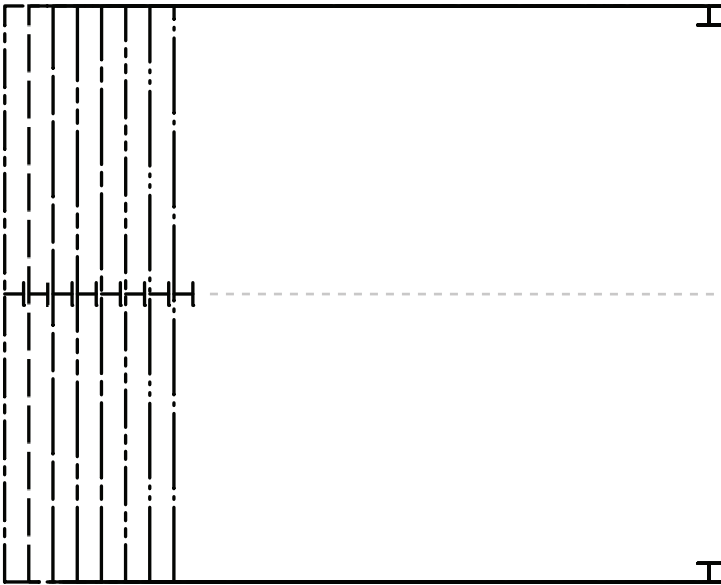


#MoodFloraPattern

"The Flora Blouse"
MDF228

LOWER
CUT 2

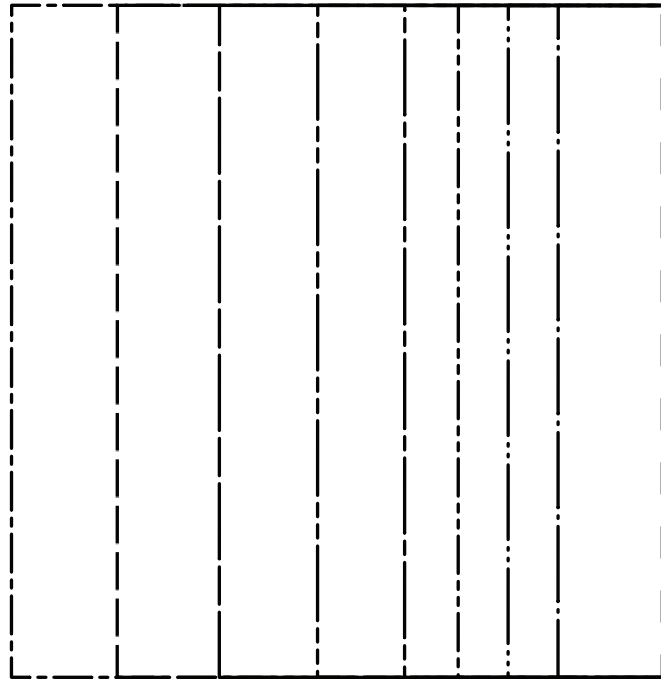




PATTERNS
BY
mood
DESIGNER FABRICS
MDF228

#MoodFloraPattern

“The Flora Blouse”
MDF228



PATTERNS
BY
mood
DESIGNER FABRICS
MDF228

“The Flora Blouse”
MDF228

4

COLLAR

CUT 1 OF FABRIC

#MoodFloraPattern

BUTTON PLACKET
CUT 2 OF FABRIC B



“The Flora Blouse”
MDF228

SLEEVE CUFF
CUT 2 OF FABRIC B

#MoodFloraPattern



CENTER BACK NECK

5



SIZE 0/2

SIZE 4/6

SIZE 8/10

SIZE 12/14

SIZE 16/18

SIZE 20/22

SIZE 24/26

SIZE 28/30

SIZE 0/2

SIZE 4/6

SIZE 8/10

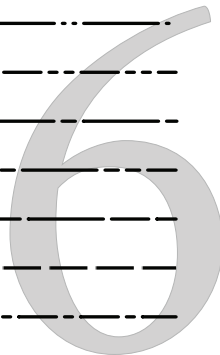
SIZE 12/14

SIZE 16/18

SIZE 20/22

SIZE 24/26

SIZE 28/30



SIZE 0/2

SIZE 4/6

SIZE 8/10

SIZE 12/14

SIZE 16/18

SIZE 20/22

SIZE 24/26

SIZE 28/30

T

T

T

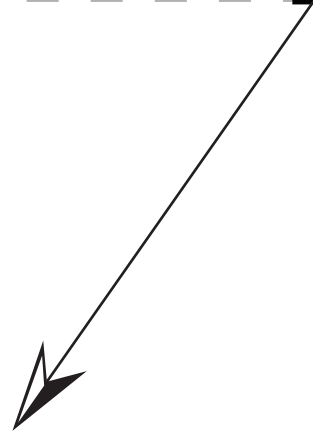
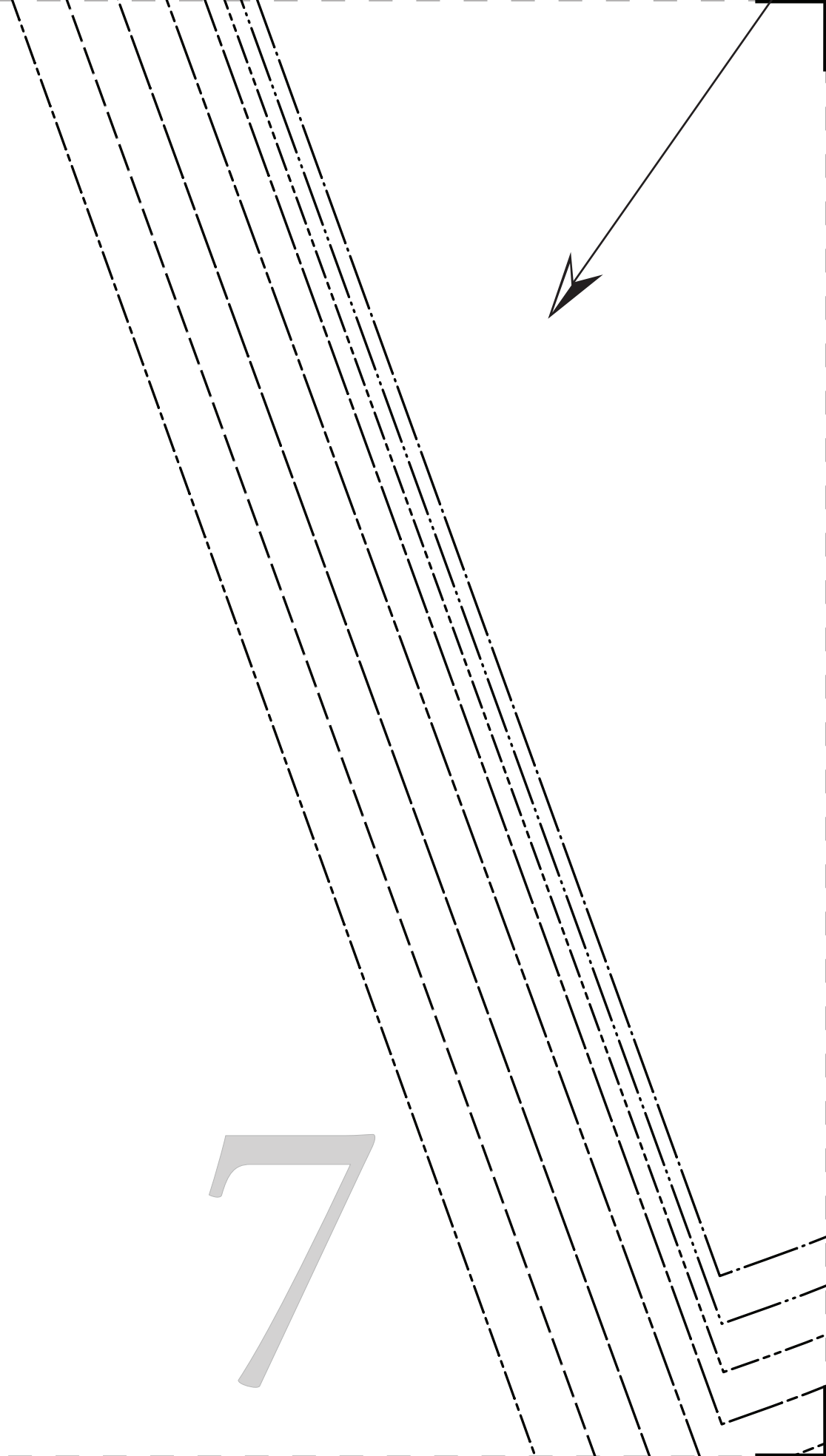
T

T

T

T

T

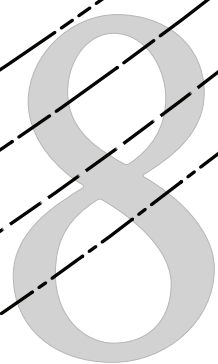
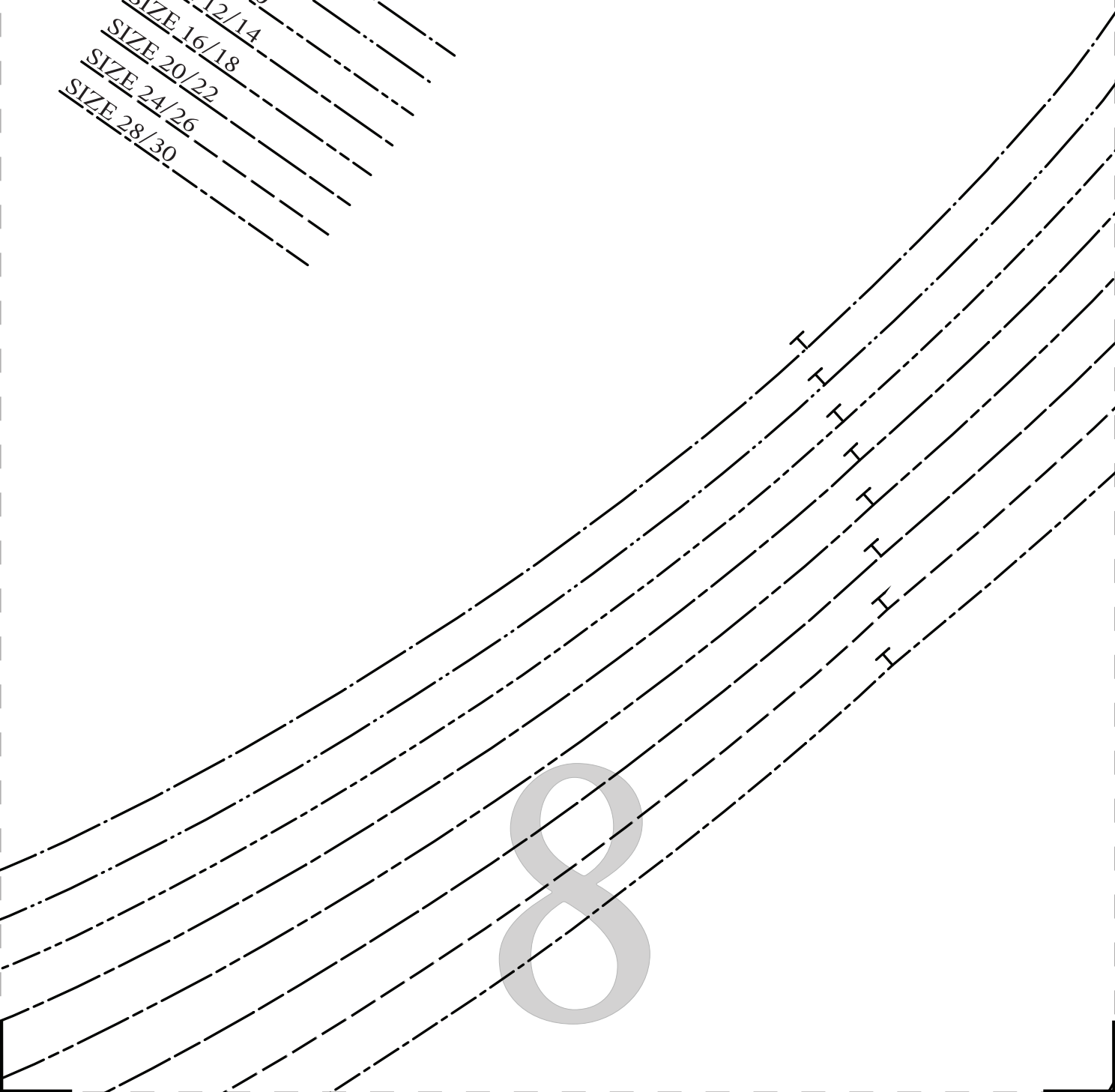


7

SLEEVE OF FABRIC B

THIS NOTCH
GOES TO ARMHOLE
SIDE SEAM

- SIZE 0/2
- SIZE 4/6
- SIZE 8/10
- SIZE 12/14
- SIZE 16/18
- SIZE 20/22
- SIZE 24/26
- SIZE 28/30

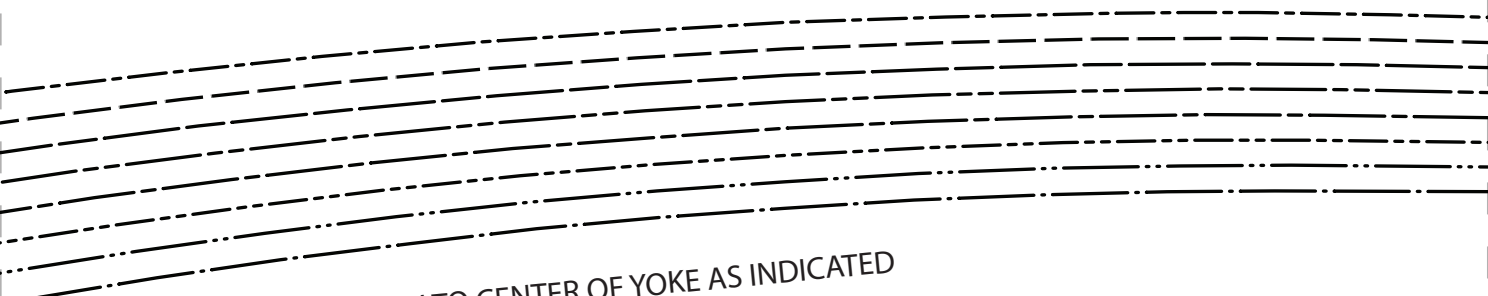




PATTERN
BY
moo
DESIGNER FAB
MDF228

9

#MoodFloraPa

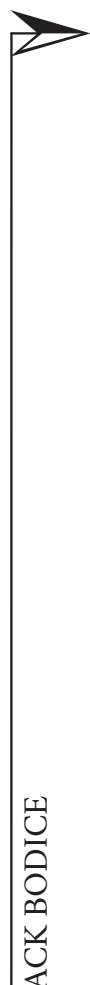


GATHER BODICE FROM NOTCH TO CENTER OF YOKE AS INDICATED

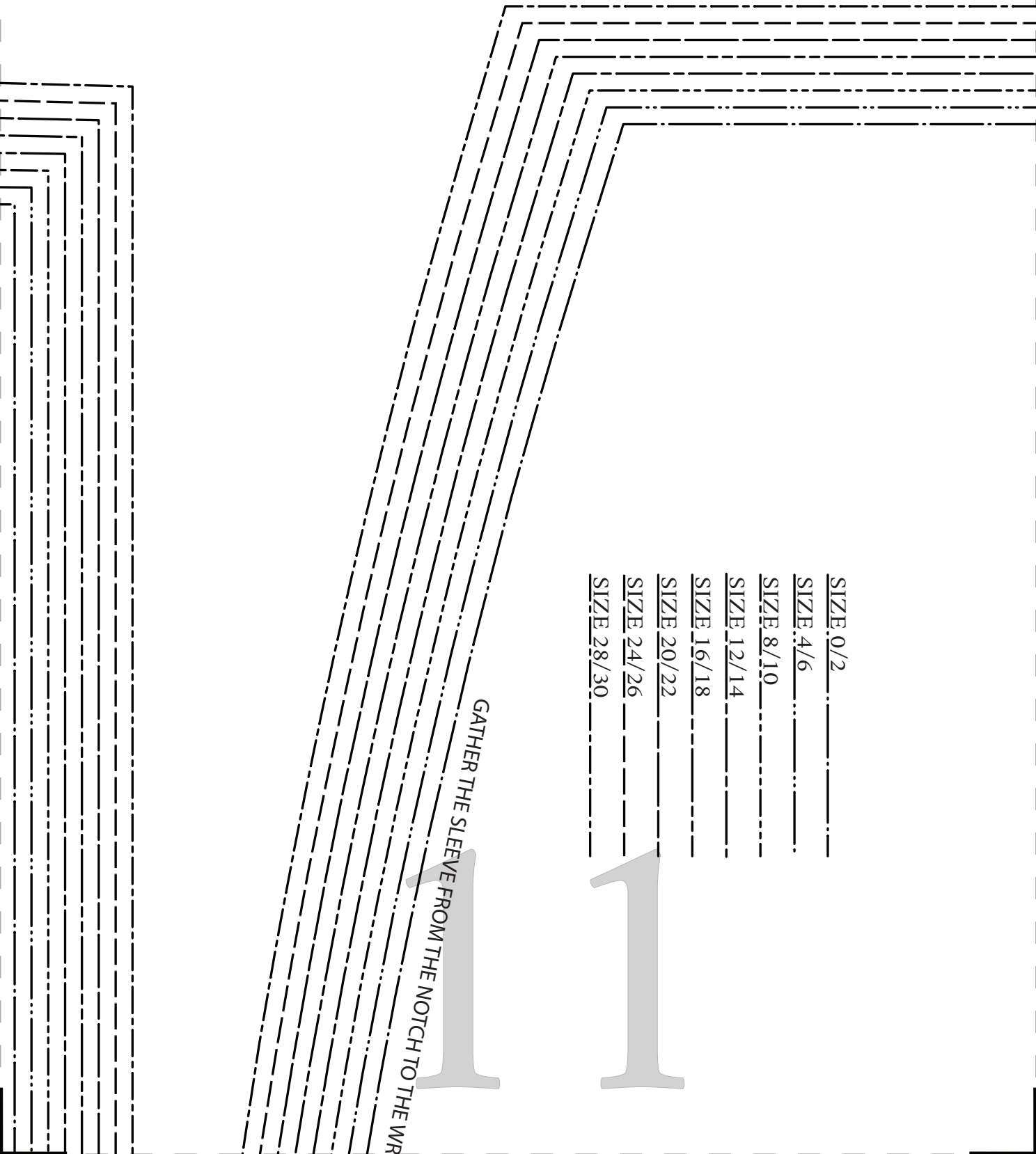
NS
d
RICS

attern

10



BACK BODICE



SIZE 0/2

SIZE 4/6

SIZE 8/10

SIZE 12/14

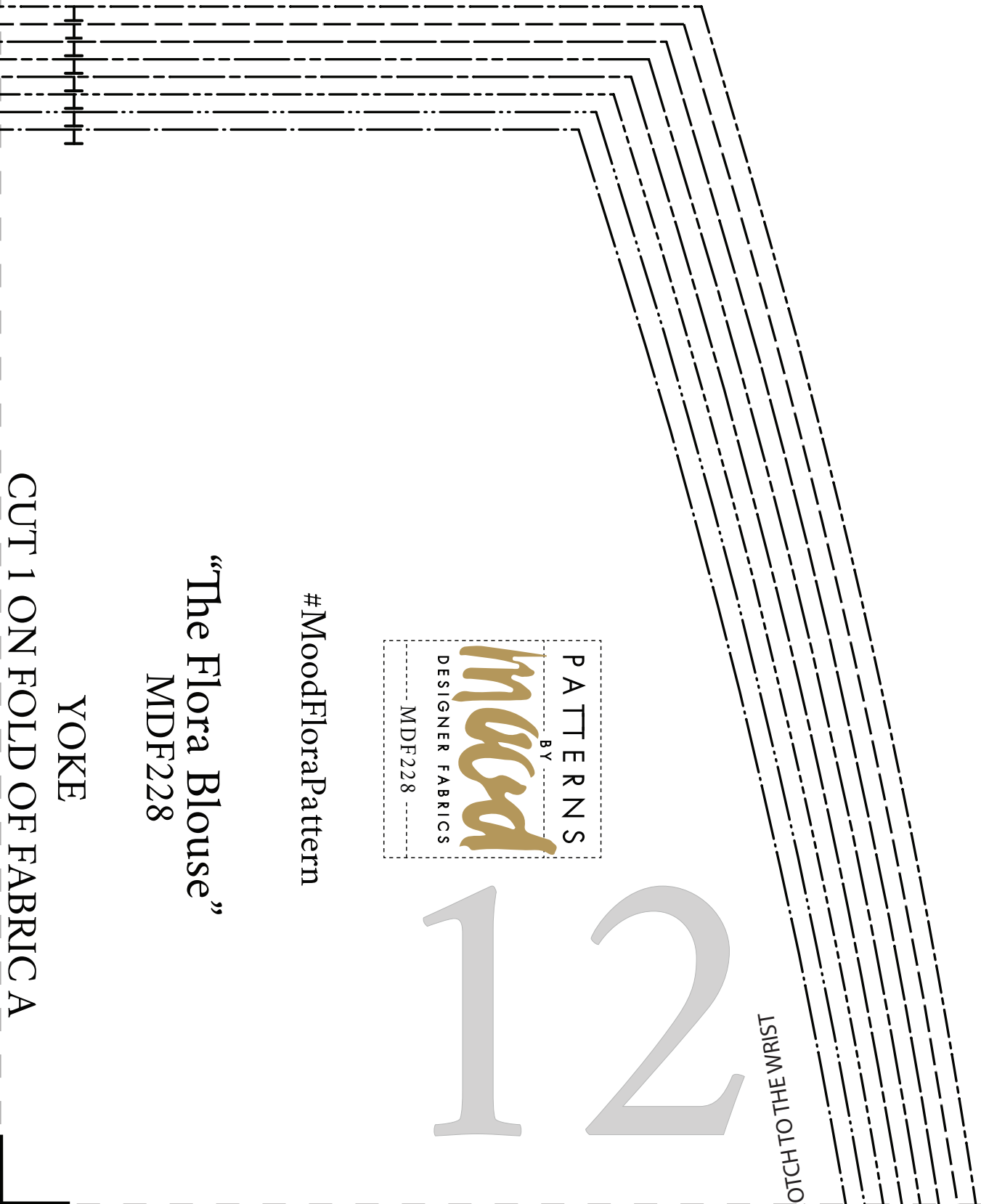
SIZE 16/18

SIZE 20/22

SIZE 24/26

SIZE 28/30

GATHER THE SLEEVE FROM THE NOTCH TO THE WR



NOTCH TO THE WRIST



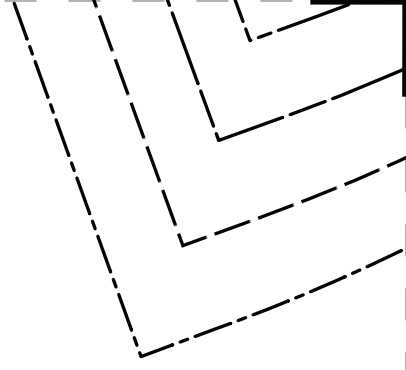
12

#MoodFloraPattern

“The Flora Blouse”
MDF228

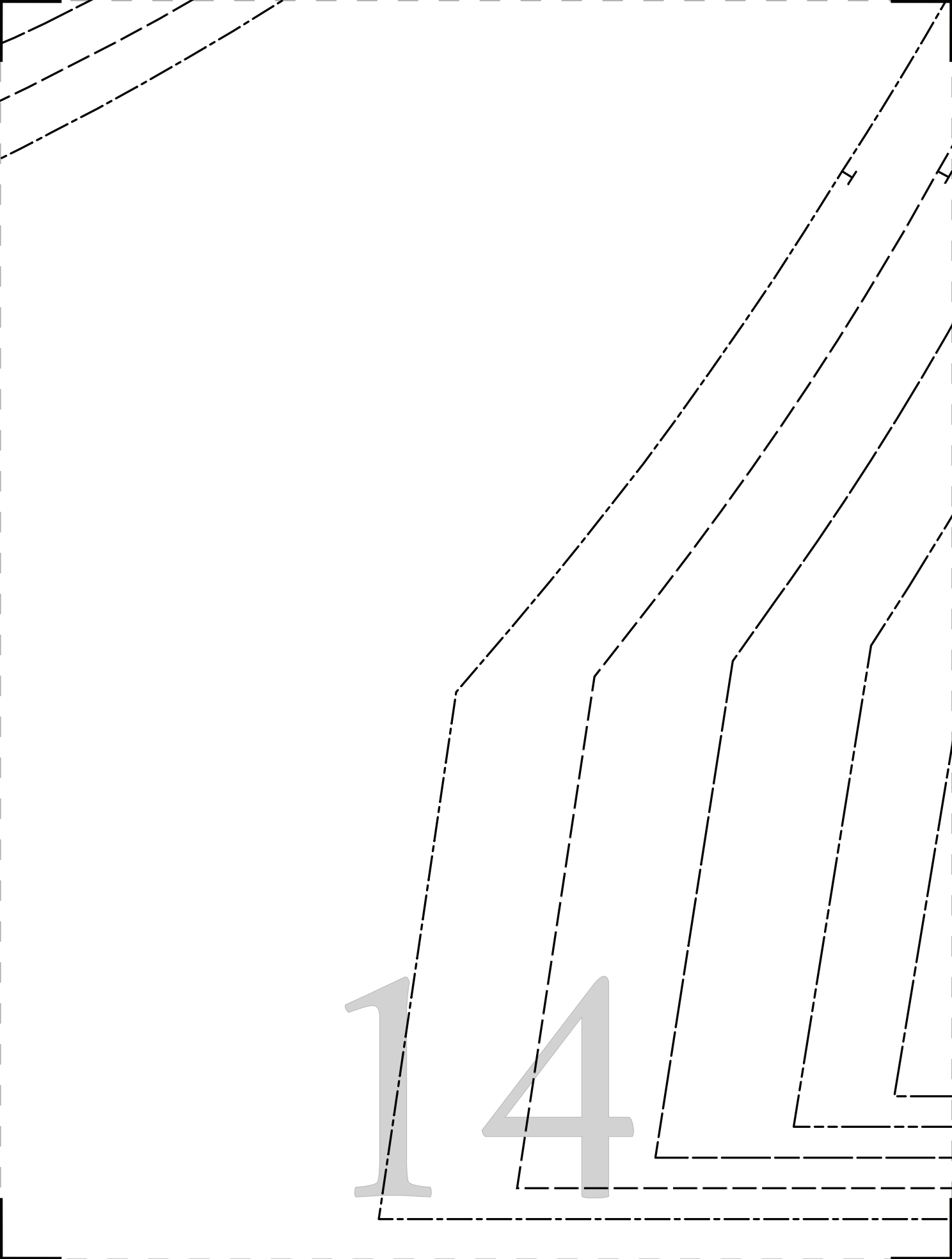
YOKE

CUT 1 ON FOLD OF FABRIC A



13

14

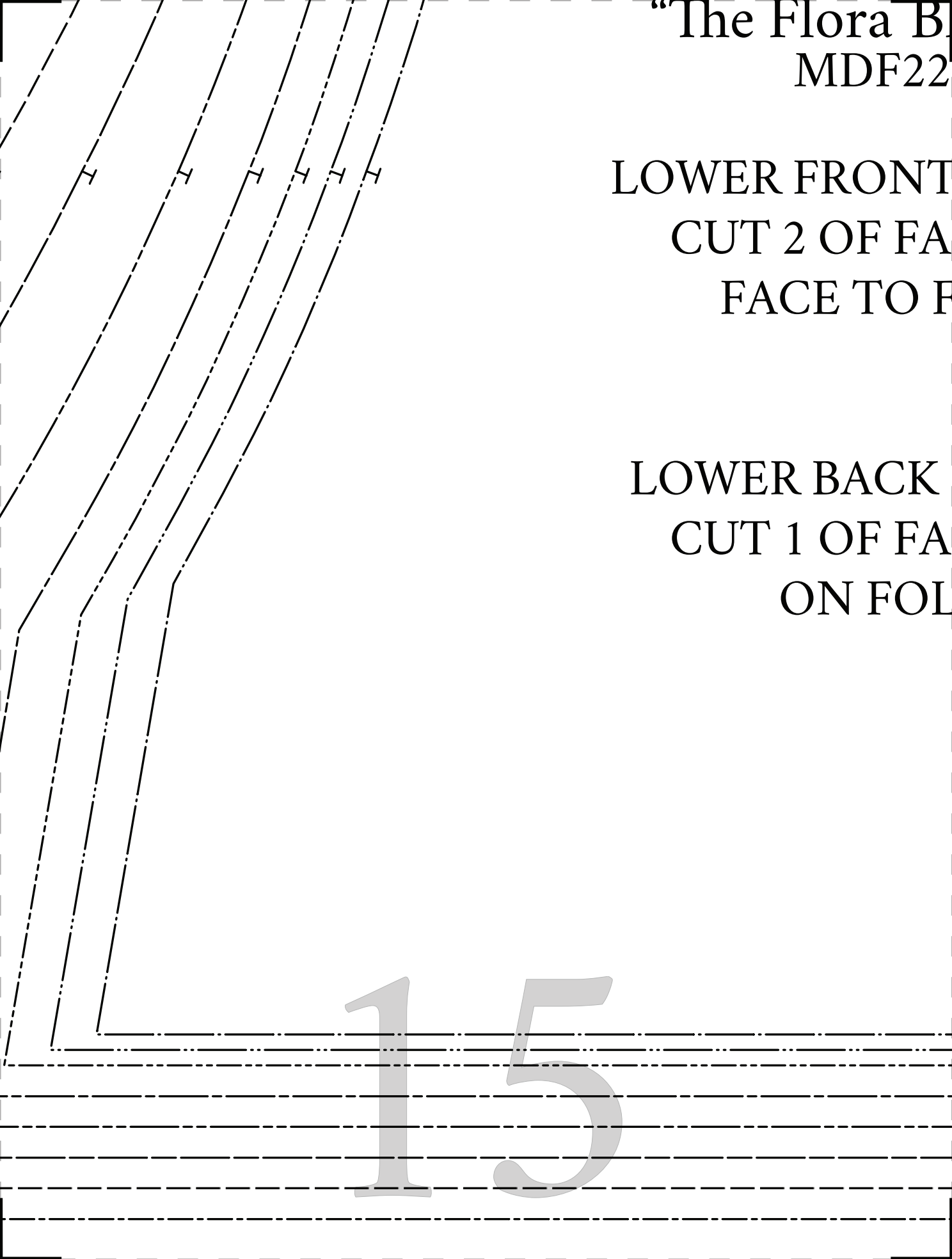


"The Flora B"
MDF22

LOWER FRONT
CUT 2 OF FA
FACE TO F

LOWER BACK
CUT 1 OF FA
ON FOL

15



ouse"
8

BODICE
BRIC B
FACE

BODICE
BRIC B
D

GRAINLIN



PLACE ON FOLD OF FABRIC FOR



16



LIST

GATHER THE BODICE FROM THE NOTCH TO THE CENTER FRONT

CUT FOR CENTER FRONT OPENING

17

GRAINLINE



GATHER THE SLEEVE FROM THE N

GATHER THE BODICE FROM THE NOTCH TO THE CENTER BACK

PLACE ON FOLD OF FABRIC

18

