



#MoodRosellePattern

“The Roselle Romper”

Ladies Sizes 00 to 32

Formatted for both
US Letter & A4 Paper

Trimless Option: This is the fastest! No trimming needed! Place left-side margins over right-side margins, overlapping dashed lines and dots. In the same fashion, top margins will overlap bottom margins. Slight unprinted gaps are normal for this method.

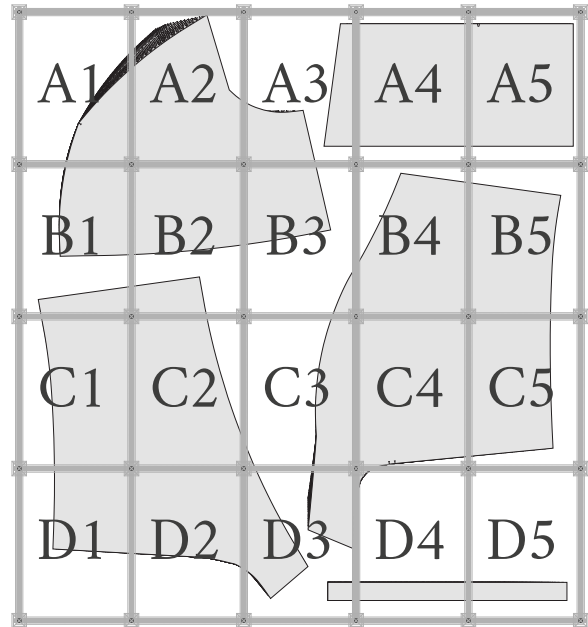
Trimmed Option: This removes any unprinted gaps. Trim along the top and right margins at the dashed lines. Overlap the trimmed margins to the untrimmed margins, matching dashed lines and dots.

Tip! Build rows first, then join the rows together as you go.

©2022 MoodFabrics.com / MoodSewciety.com
Mass production, resale, or distribution of this pattern in any form is strictly prohibited.

STOP!

Print only this page first to check accuracy.
The Mood square to the left should measure 2 inches.
Print “actual size” in “portrait” mode (not auto center).
Formatted for both US Letter & A4 paper sizes.





“The Roselle Romper”

#MoodRosellePattern

Ladies Sizes 00 to 32

BODY MEASUREMENTS IN INCHES

SINGLE SIZES	00	0	2	4	6	8	10	12	14	16	18	20	22	24	26	28	30	32
BUST	31	32	33	34	35	36	37.5	39	40.5	42.5	44.5	46.5	48.5	50.5	52.75	55	57.25	59.5
WAIST	23	24	25	26	27	28	29.5	31	32.5	34.5	36.5	38.5	40.5	42.5	44.75	47	49.25	51.5
HIPS	34	35	36	37	38	39	40.5	42	43.5	45.5	47.5	49.5	51.5	53.5	56	58.5	61	63.5

APPROXIMATE FINISHED GARMENT MEASUREMENTS - IN INCHES

SINGLE SIZES	00	0	2	4	6	8	10	12	14	16	18	20	22	24	26	28	30	32
BUST*	35.875	36.875	37.875	38.875	39.875	40.875	42.375	43.875	45.375	47.375	49.375	51.375	53.375	55.375	57.625	59.875	62.125	64.375
WAIST*	37	38	39	40	41	42.5	44	45.5	47	49	51	53	55	57	59.25	61.5	63.75	66
HIPS	45.75	46.75	47.75	48.75	49.75	51.25	52.75	54.25	55.75	57.75	59.75	61.75	63.75	65.75	68.25	70.75	73.25	75.75

* Measured with elastic stretched

Drafted for woven, drapery fabrics. The bust is semi-fitted with an elastic back, and a full-elastic waist to cinch to preference. The hip area has about an extra 3-inch "pinch" of fabric on each side. Choose size according to desired finished garment measurements, blending between sizes as needed. However, keep in mind that the garment bust & waist must be ample enough to pull-on over the hips.

We love creating these free patterns for the community and we want to keep them free! In return, we hope you check out MoodFabrics.com for your next project!

Want to use one of our patterns to make a garment to sell? Our patterns are royalty-free! We just ask that you credit us with MoodSewciety.com or MoodFabrics.com in your product description.

♥ The Mood Sewciety Team

FOR SEWING INSTRUCTIONS:

Scan the QR code or visit
MoodSewciety.com and search
"MDF307"



1/2" seam allowances (SA's) included
unless stated otherwise.

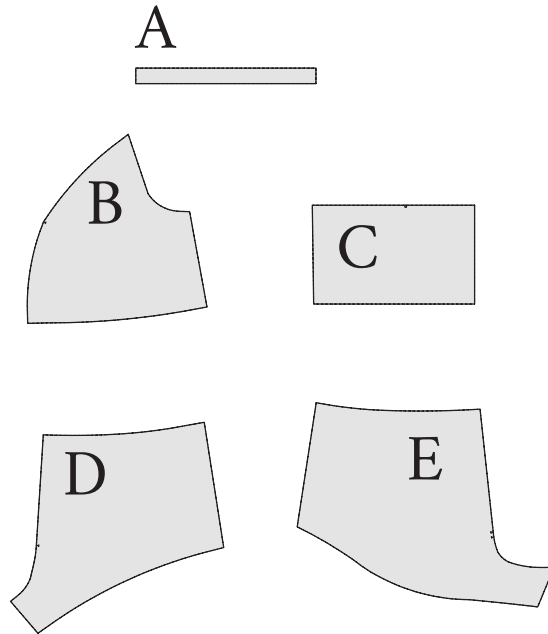
©2022 MoodFabrics.com / MoodSewciety.com
Mass production, resale, or distribution of this
pattern in any form is strictly prohibited.



MDF307
 “The Roselle Romper”
 Ladies Sizes 00 to 32

#MoodRosellePattern

A	A - STRAP FABRIC: CUT 2
B	B - FRONT BODICE FABRIC: CUT 2 MIRRORED PAIR
C	C - BACK BODICE FABRIC: CUT 1 ON FOLD
D	D - FRONT SHORTS FABRIC: CUT 2 MIRRORED PAIR
E	E - BACK SHORTS FABRIC: CUT 2 MIRRORED PAIR

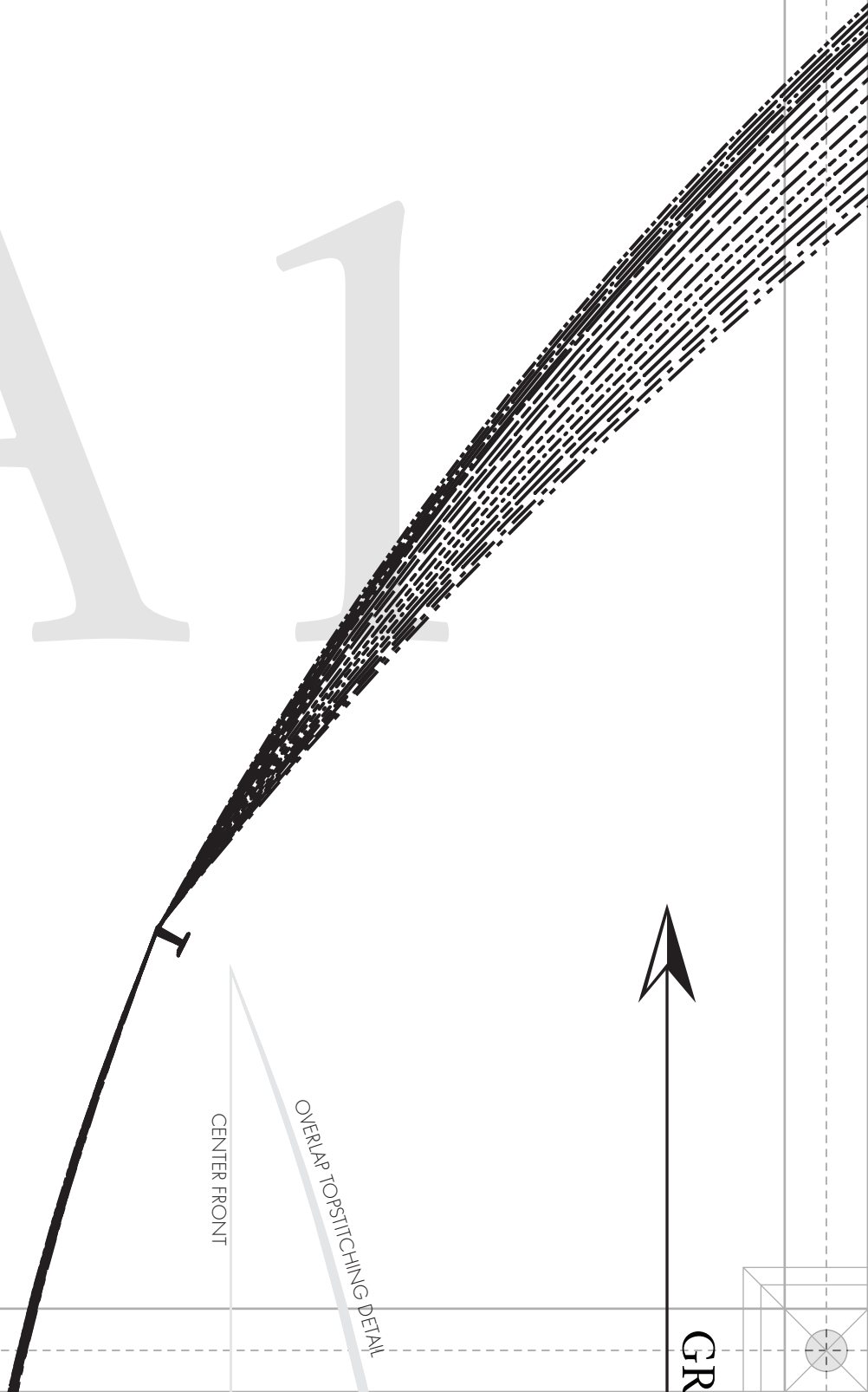


Size Line Key

SIZE 00 _____
 SIZE 0 _____
 SIZE 2 _____
 SIZE 4 _____
 SIZE 6 _____
 SIZE 8 _____
 SIZE 10 _____
 SIZE 12 _____
 SIZE 14 _____

SIZE 16 _____
 SIZE 18 _____
 SIZE 20 _____
 SIZE 22 _____
 SIZE 24 _____
 SIZE 26 _____
 SIZE 28 _____
 SIZE 30 _____
 SIZE 32 _____

A1



I

CENTER FRONT

OVERLAP TOP STITCHING DETAIL



GR

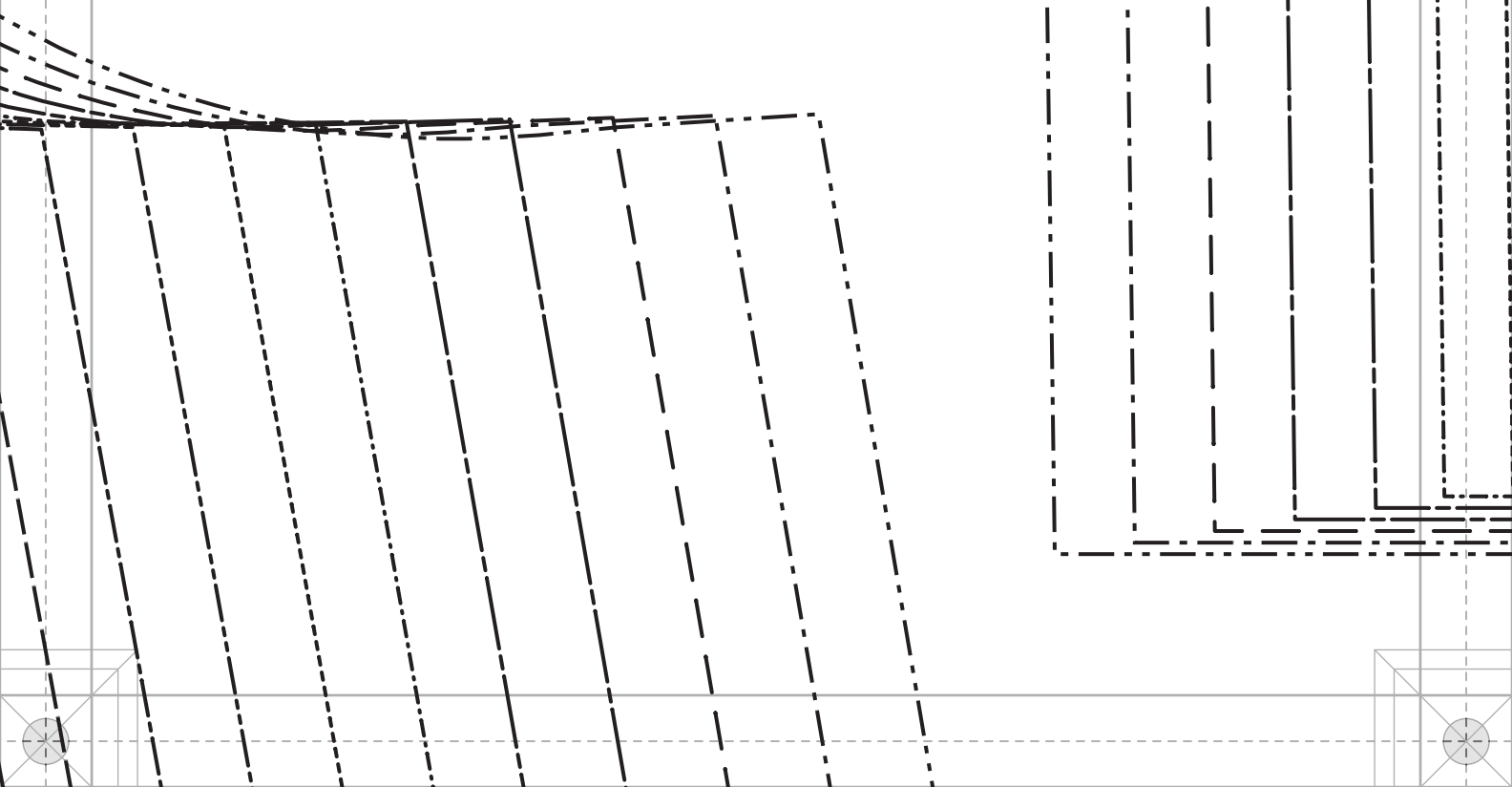


PATTERNS
BY
mood
DESIGNER FABRICS
-----MDF307-----

#MoodRosellePattern

“The Roselle Romper”
MDF307

A 3



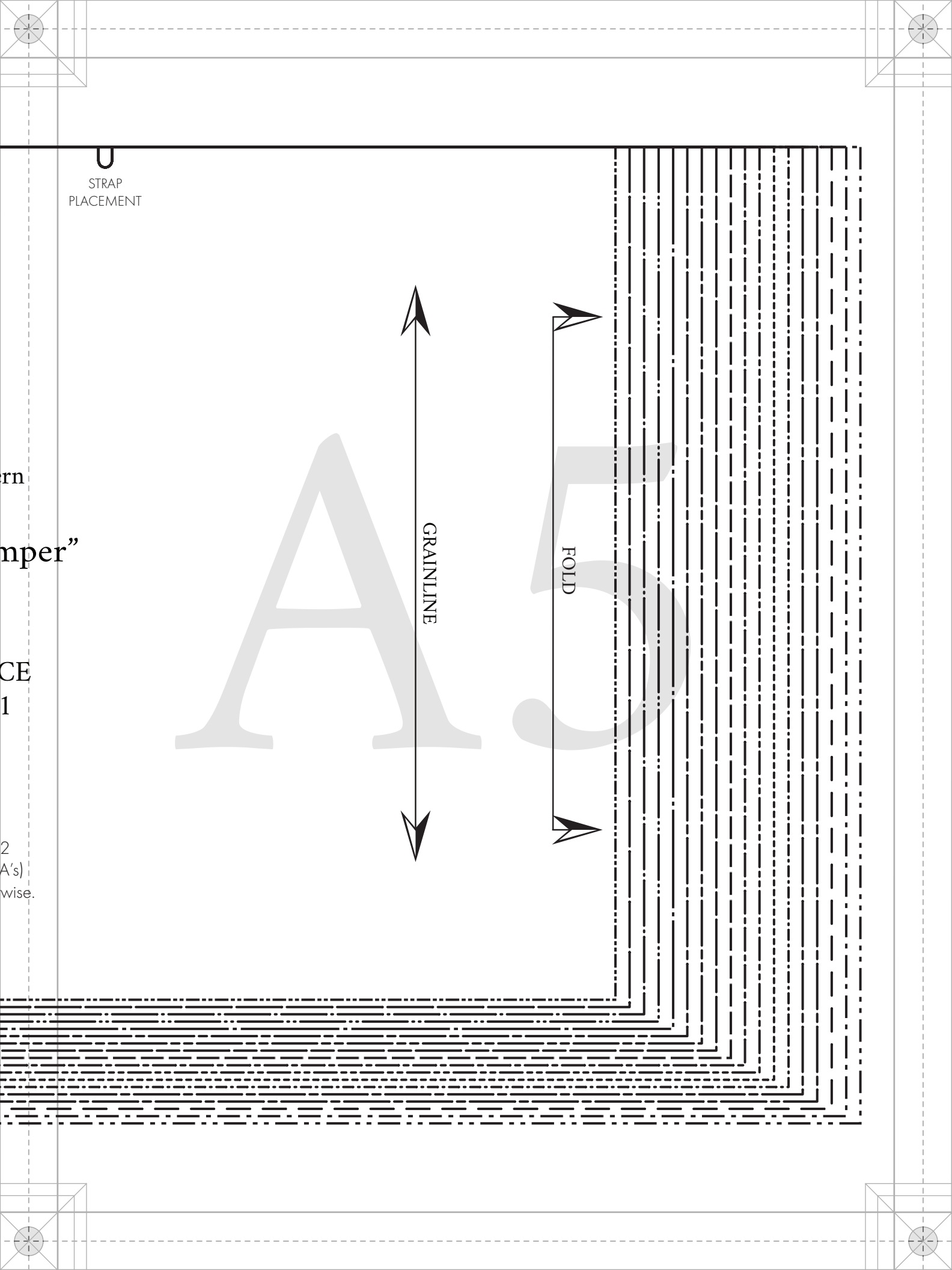


#MoodRosellePattern

“The Roselle Romper
MDF307

C - BACK BODICE
FABRIC: CUT 1
ON FOLD

LADIES SIZES 00 TO 32
1/2" seam allowances (SA's)
included unless stated otherwise.



U
STRAP
PLACEMENT

GRAINLINE

FOLD

rn
mper”

CE
1

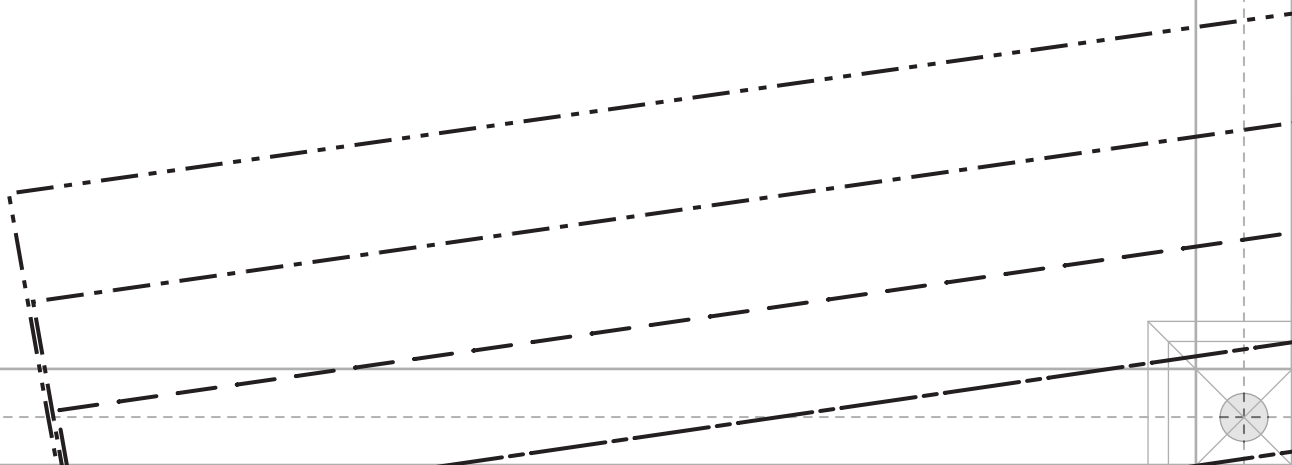
2
A's)
wise.

GRAINLINE



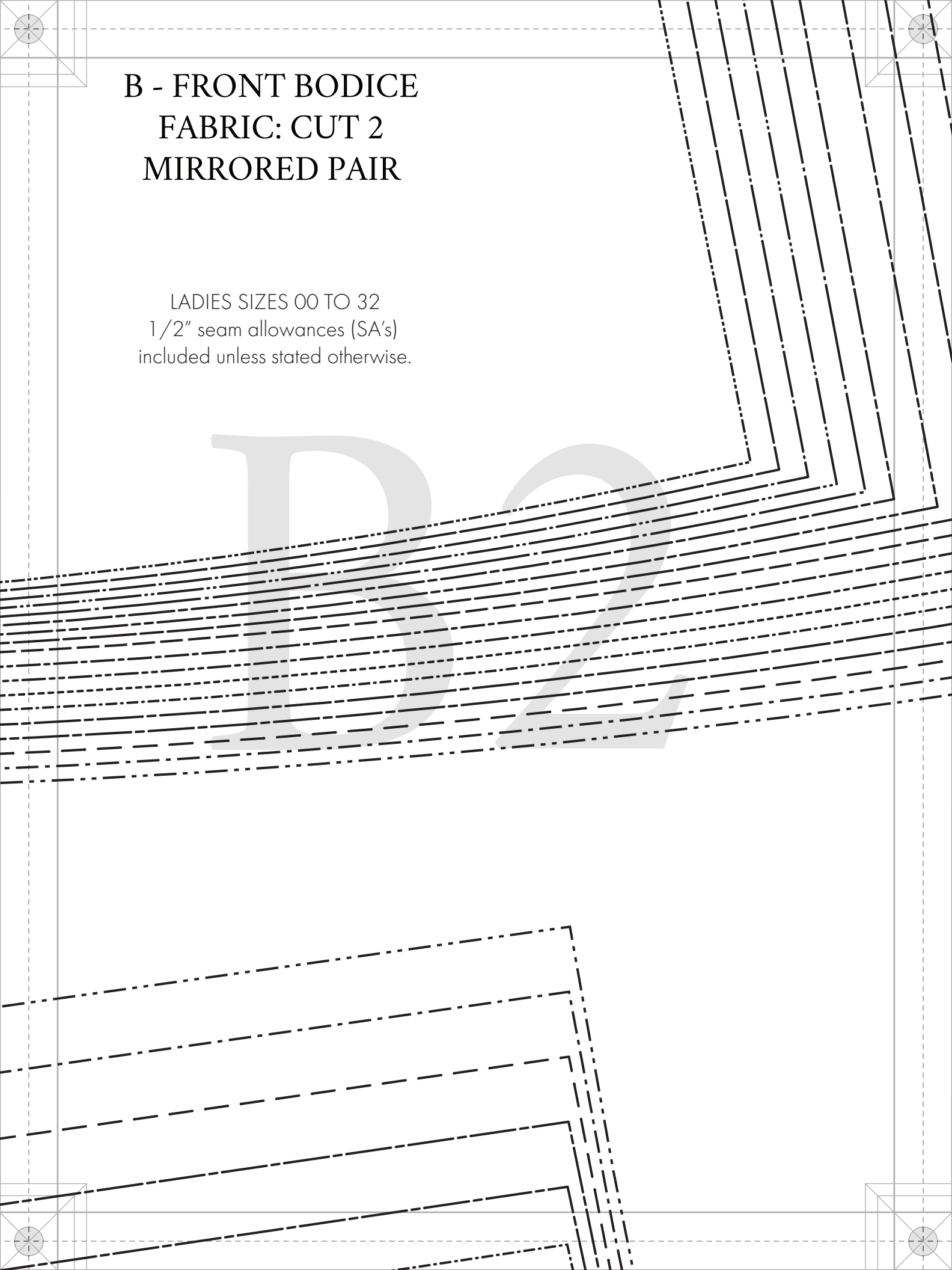
DETAIL

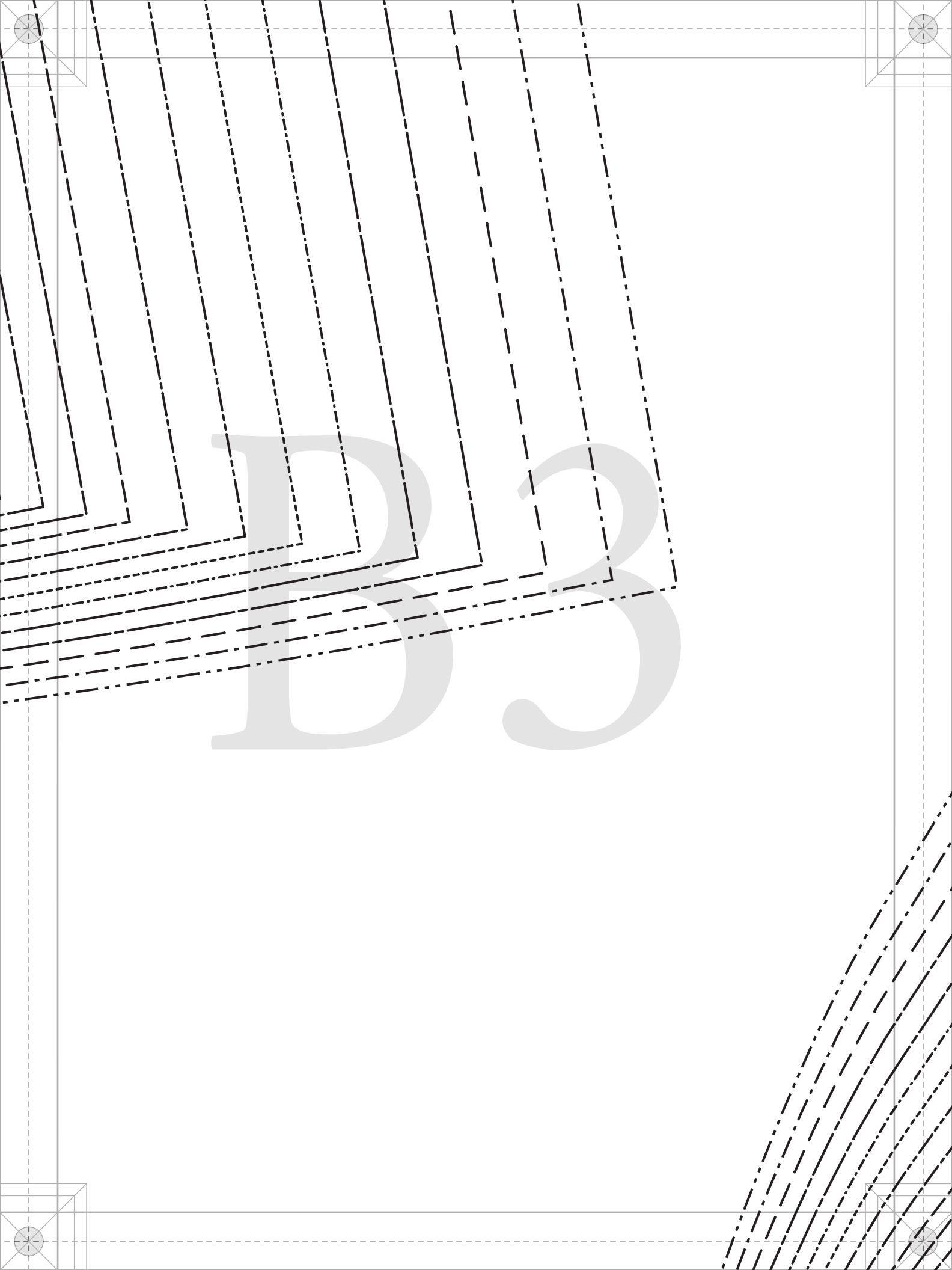
B1

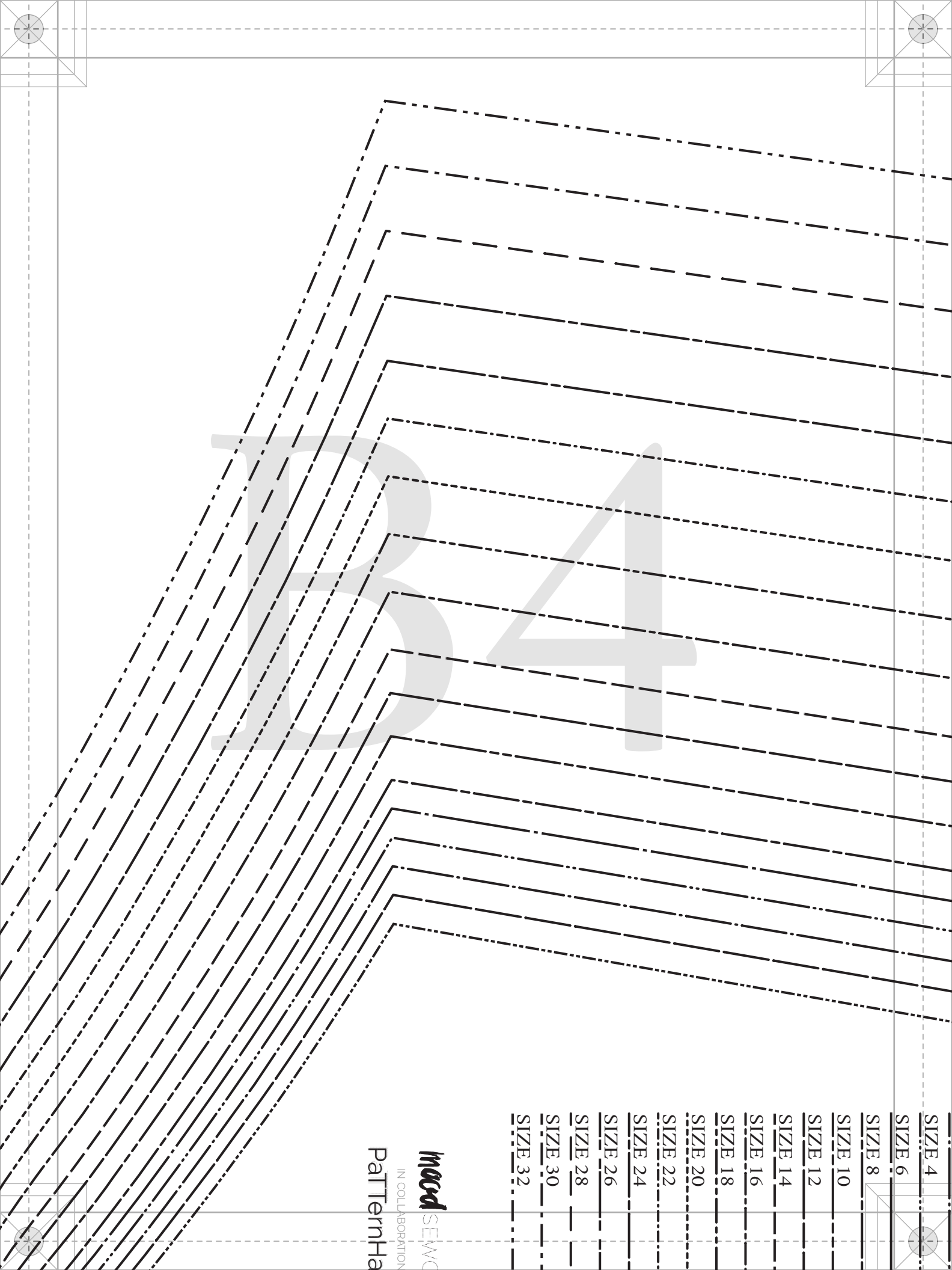


B - FRONT BODICE
FABRIC: CUT 2
MIRRORED PAIR

LADIES SIZES 00 TO 32
1/2" seam allowances (SA's)
included unless stated otherwise.







SIZE 4

SIZE 6

SIZE 8

SIZE 10

SIZE 12

SIZE 14

SIZE 16

SIZE 18

SIZE 20

SIZE 22

SIZE 24

SIZE 26

SIZE 28

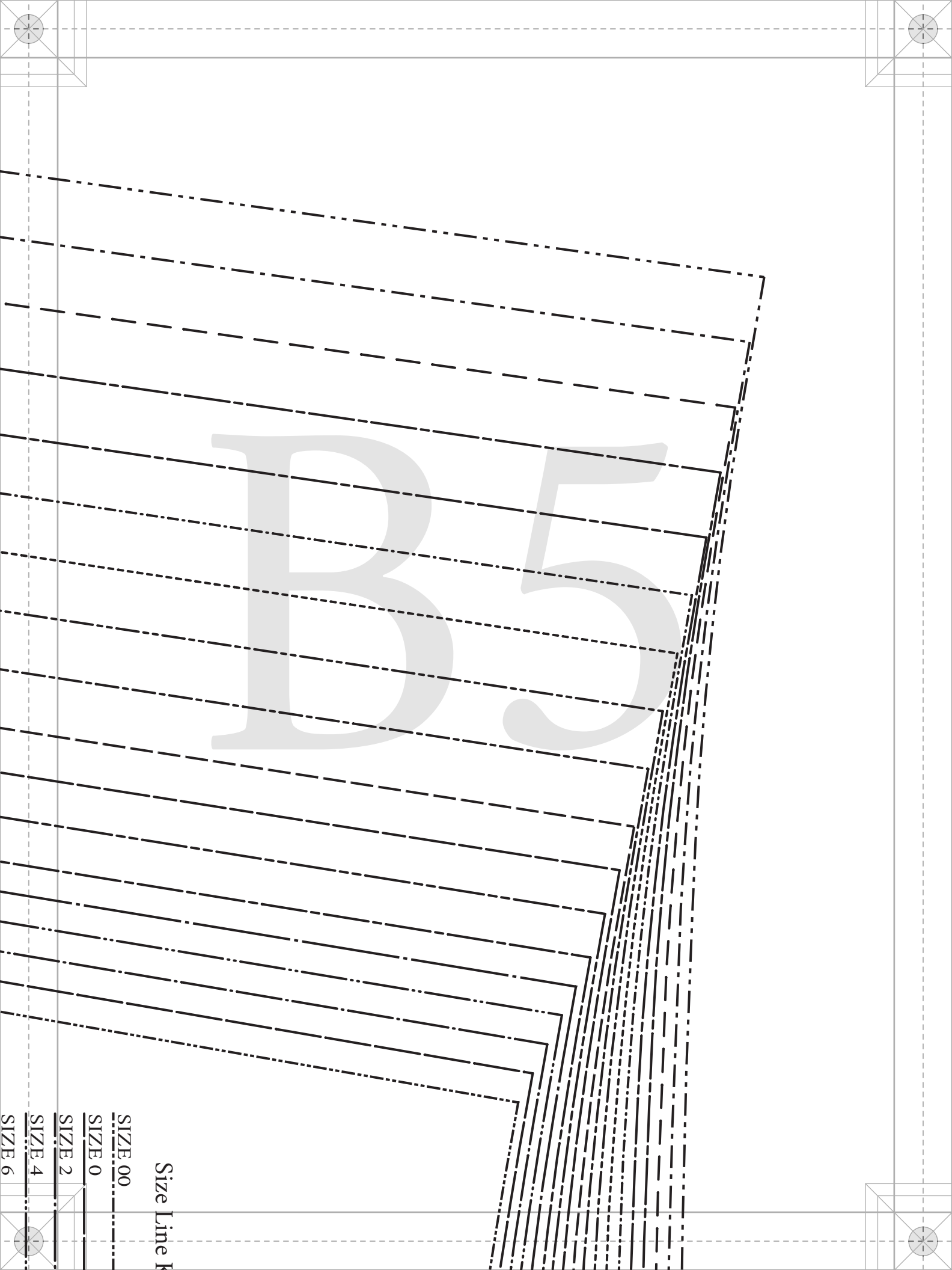
SIZE 30

SIZE 32

mod SEWING

IN COLLABORATION

PatternHa



B5

Size Line K

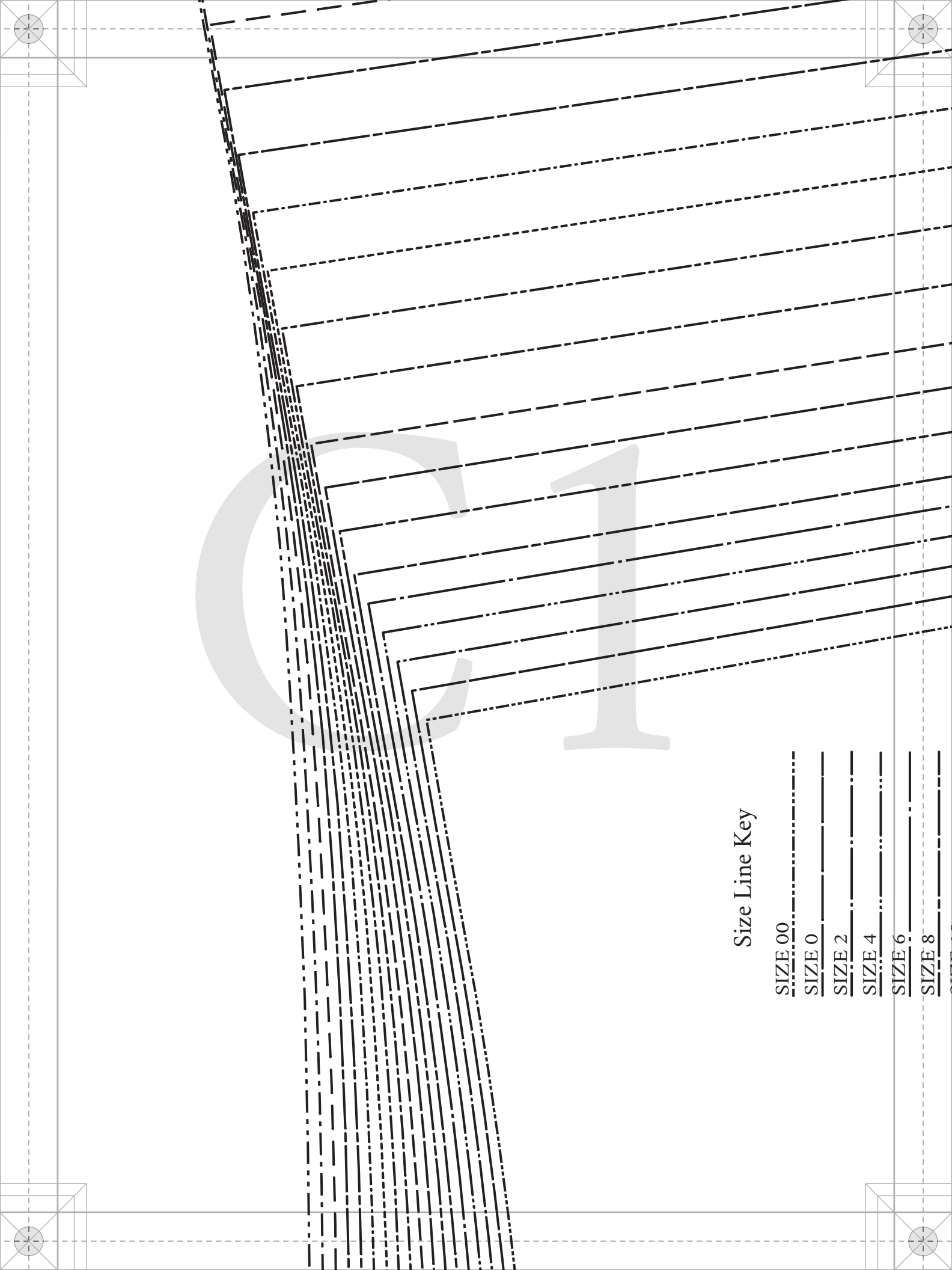
SIZE 00

SIZE 0







SIZE 2

SIZE 4

SIZE 6



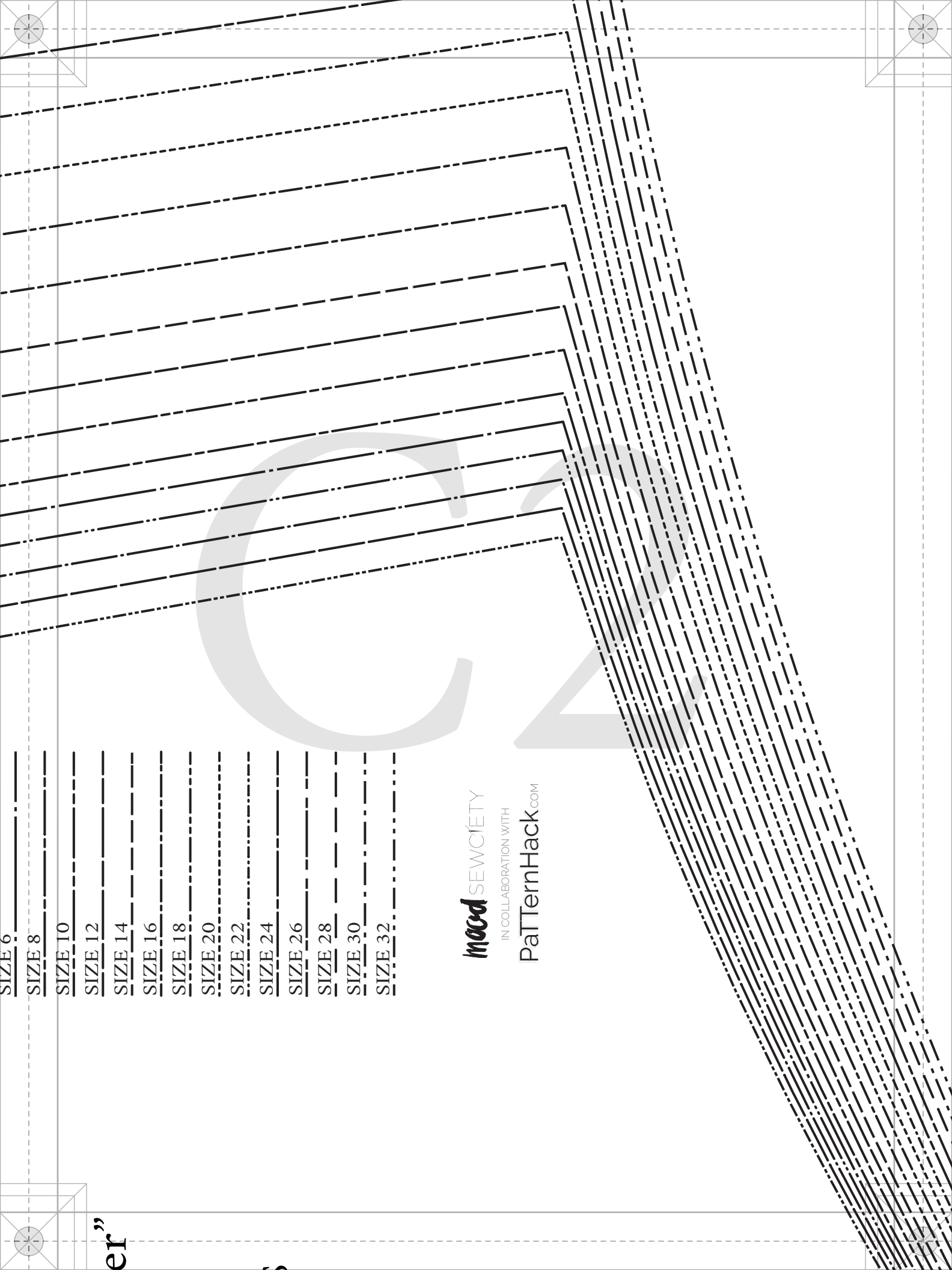
Size Line Key

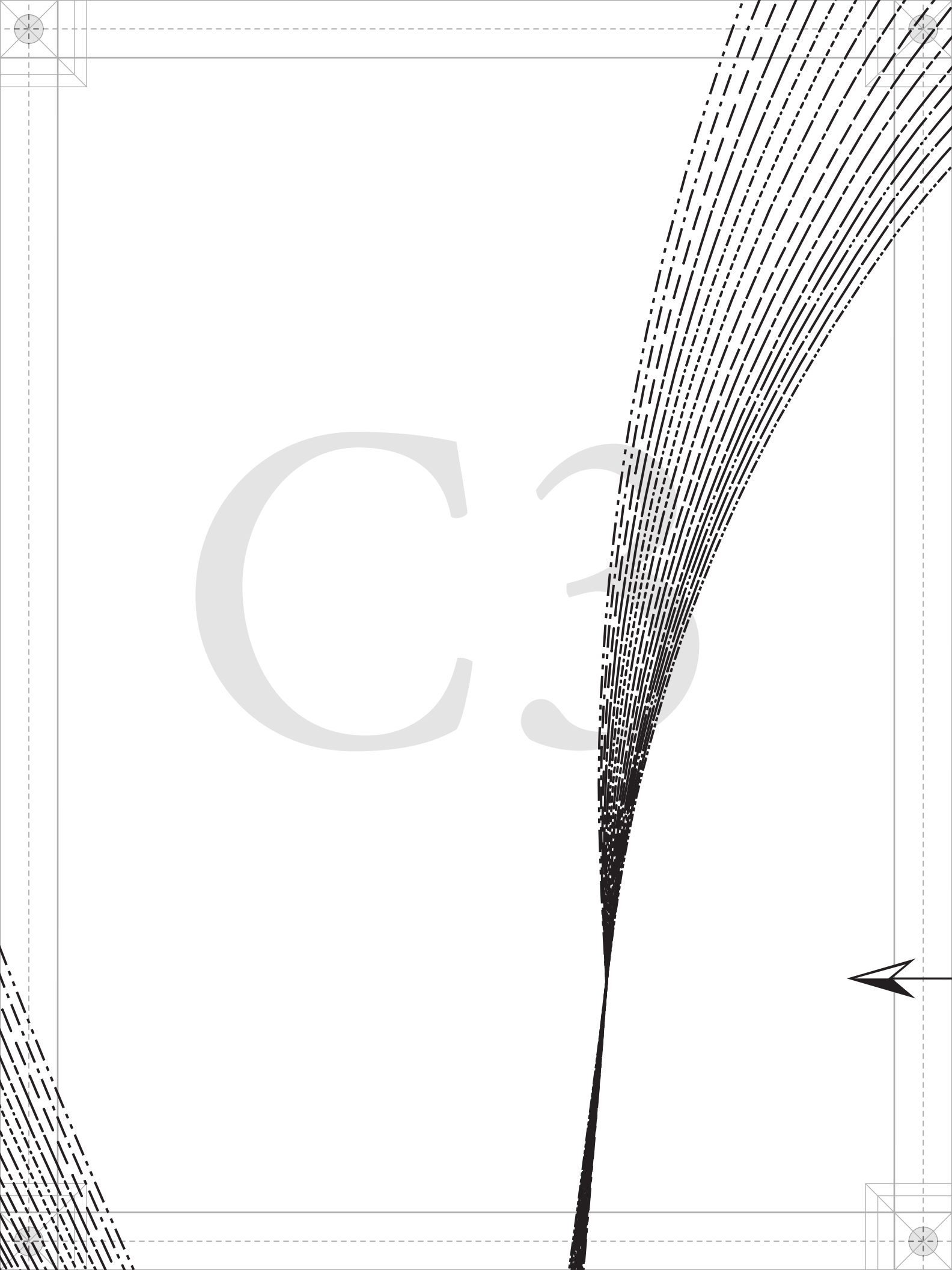
- SIZE 00 
- SIZE 0 
- SIZE 2 
- SIZE 4 
- SIZE 6 
- SIZE 8 

- SIZE 6
- SIZE 8
- SIZE 10
- SIZE 12
- SIZE 14
- SIZE 16
- SIZE 18
- SIZE 20
- SIZE 22
- SIZE 24
- SIZE 26
- SIZE 28
- SIZE 30
- SIZE 32

mead SEWCiETY
 IN COLLABORATION WITH
PaTternHack.COM

er”





#MoodRosellePattern

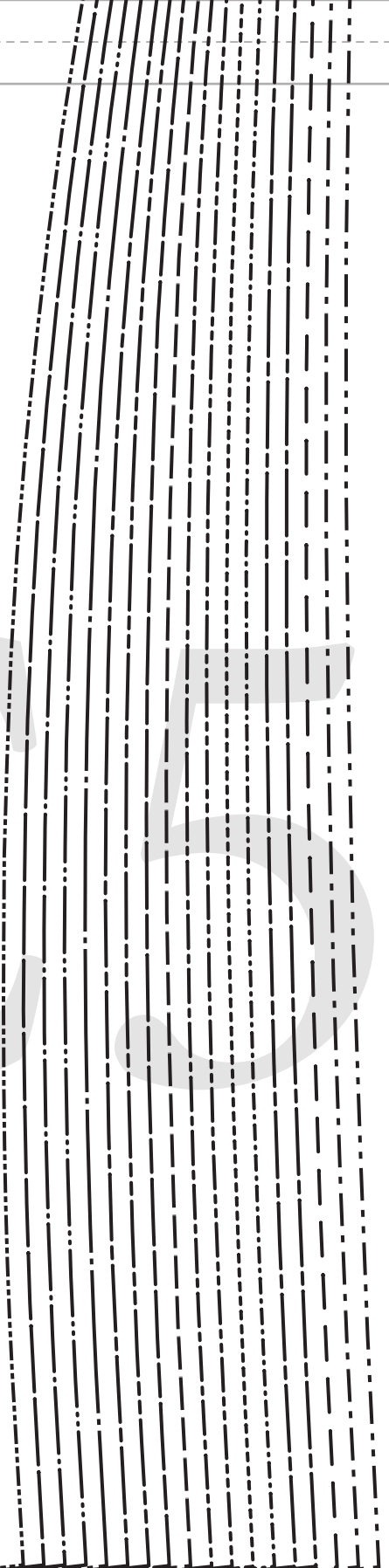
“The Roselle Romper”

MDF307

E - BACK SHORTS
FABRIC: CUT 2
MIRRORED PAIR

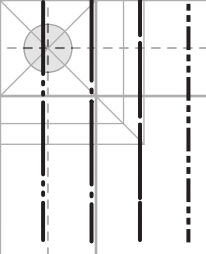
LADIES SIZES 00 TO 32
1/2" seam allowances (SA's)
included unless stated otherwise.

GRAINLINE

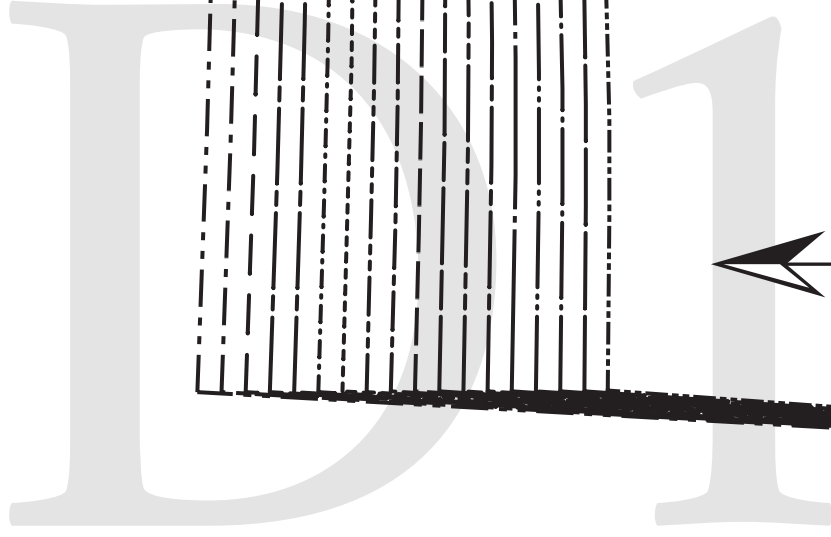


PATTERNS
BY
Mood
DESIGNER FABRICS
MDF307

Line Key



#MoodRosellePattern



PATTERNS
BY
mood
DESIGNER FABRICS
MDF307

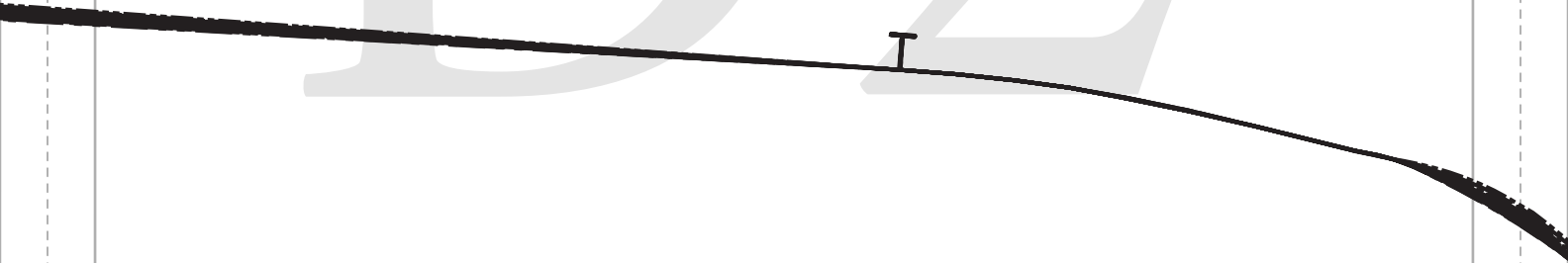
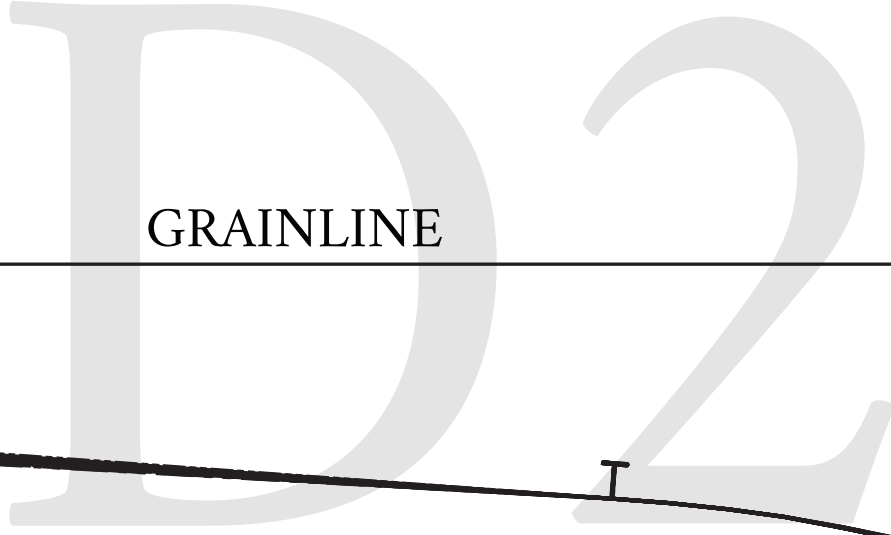
#MoodRosellePattern

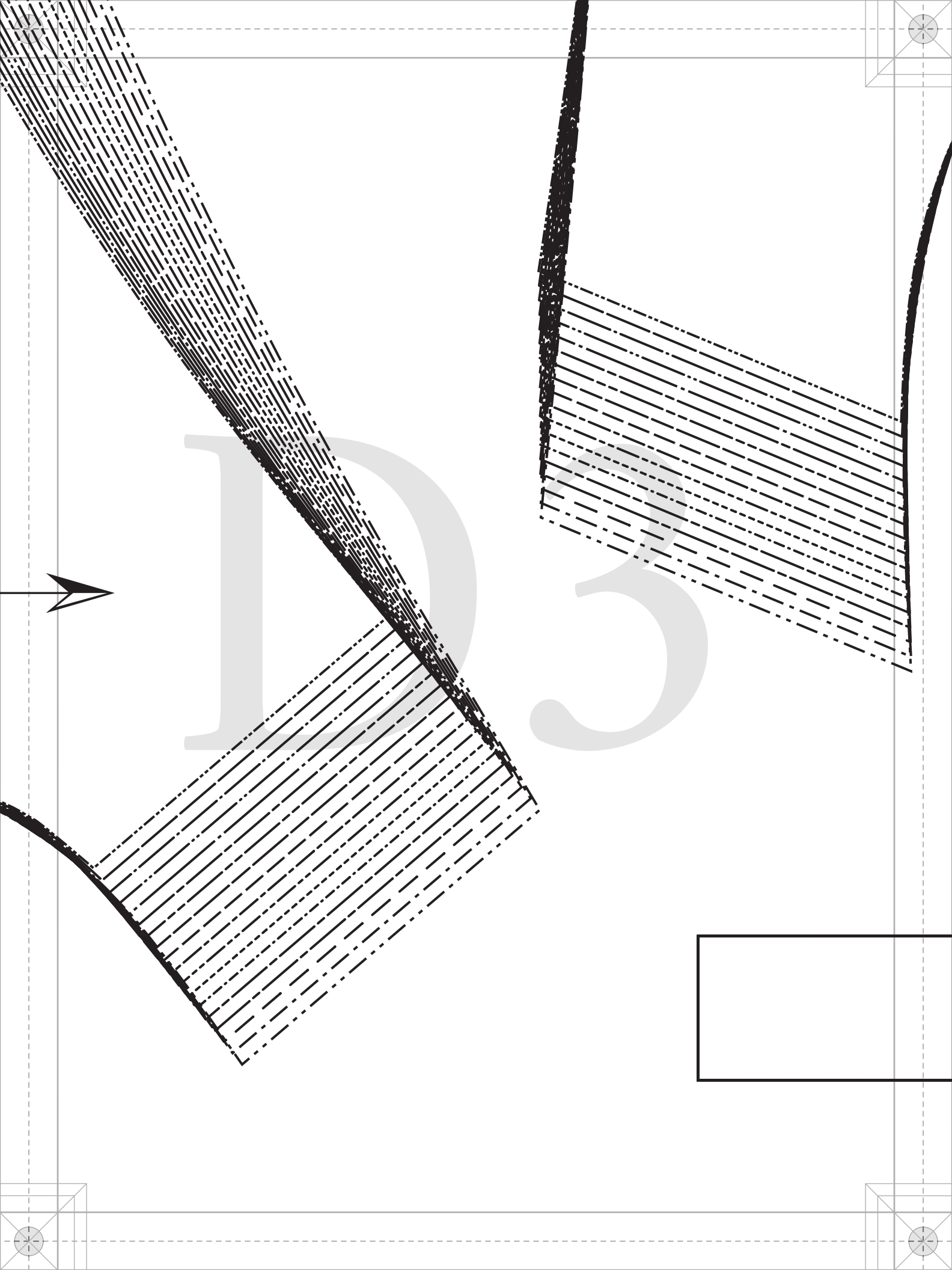
“The Roselle Romper” MDF307

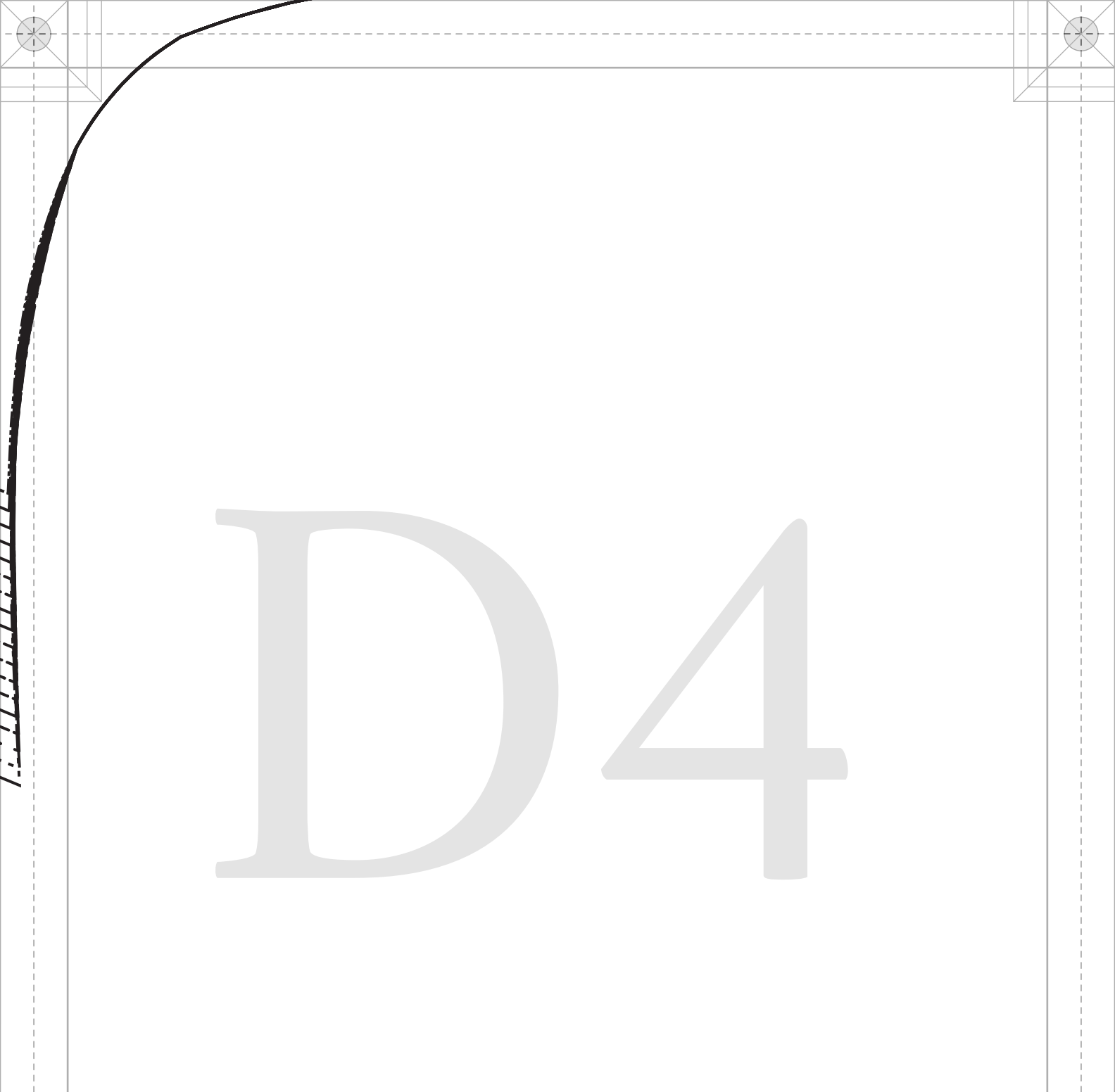
D - FRONT SHORTS
FABRIC: CUT 2
MIRRORED PAIR

LADIES SIZES 00 TO 32
1/2" seam allowances (SA's)
included unless stated otherwise.

GRAINLINE







“The Roselle Romper”
MDF307
A - STRAP
FABRIC: CUT 2



1/4" SA's for strap.



D5

PATTERNS
BY
mod
DESIGNER FABRICS
MDF307

