



#MoodMalPattern

## “The Mal Dress”

Ladies Duo-Sizes 00/0 to 28/30

Formatted for both  
US Letter & A4 Paper

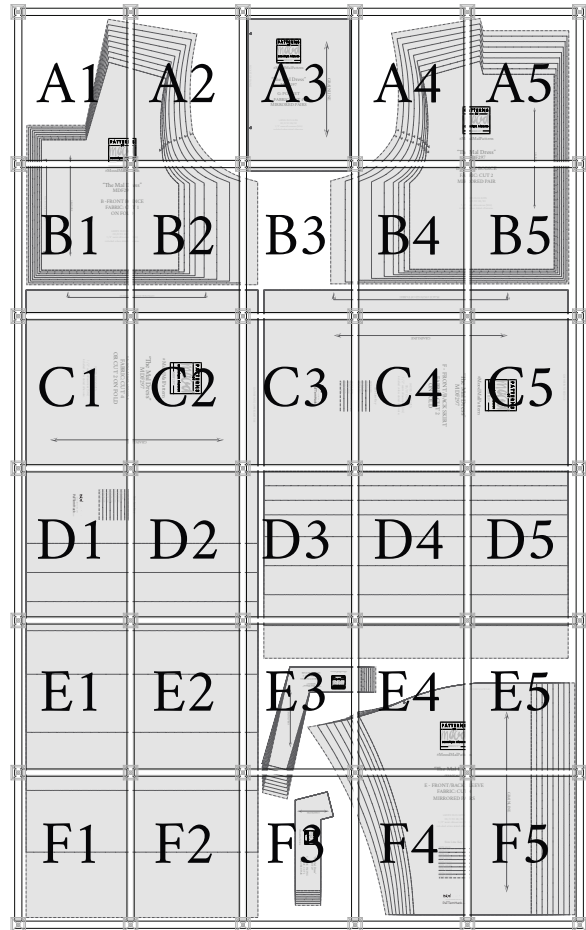
**Trimless Option:** This is the fastest! No trimming needed! Place left-side margins over right-side margins, overlapping dashed lines and dots. In the same fashion, top margins will overlap bottom margins. Slight unprinted gaps are normal for this method.

**Trimmed Option:** This removes any unprinted gaps. Trim along the top and right margins at the dashed lines. Overlap the trimmed margins to the untrimmed margins, matching dashed lines and dots.

**Tip!** Build rows first, then join the rows together as you go.

**STOP!**

Print only this page first to check accuracy.  
The Mood square to the left should measure 2 inches.  
Print “actual size” in “portrait” mode (not auto center).  
Formatted for both US Letter & A4 paper sizes.



©2022 MoodFabrics.com / MoodSewciety.com  
Mass production, resale, or distribution of this pattern in any form is strictly prohibited.



# “The Mal Dress”

Ladies Duo-Sizes 00/0 to 28/30

#MoodMalPattern

## BODY MEASUREMENTS IN INCHES

SINGLE SIZES	00	0	2	4	6	8	10	12	14	16	18	20	22	24	26	28	30	32
DUO SIZES	00/0		2/4		6/8		10/12		14/16		18/20		22/24		26/28		30/32	
BUST	31	32	33	34	35	36	37.5	39	40.5	42.5	44.5	46.5	48.5	50.5	52.75	55	57.25	59.5
WAIST	23	24	25	26	27	28	29.5	31	32.5	34.5	36.5	38.5	40.5	42.5	44.75	47	49.25	51.5
HIPS	34	35	36	37	38	39	40.5	42	43.5	45.5	47.5	49.5	51.5	53.5	56	58.5	61	63.5

## APPROXIMATE FINISHED GARMENT MEASUREMENTS - IN INCHES

DUO SIZES	00/0	2/4	6/8	10/12	14/16	18/20	22/24	26/28	30/32
BUST	35.875	37.875	39.875	41.875	45.375	49.375	53.375	57.875	62.375
LENGTH*	48.25	48.75	49.25	49.75	50.25	50.75	51.25	51.75	52.25

\*Measured from top of shoulder to bottom of hem.

Drafted for woven fabrics. Fit is loose and freely sized. Size guide is based on the suggested design & wearing ease for this style. You can also choose your size according to your desired finished garment measurements and personal fit preferences. Blend between sizes as needed. For best results, sew a test garment to adjust your pattern as needed.

We love creating these free patterns for the community and we want to keep them free! In return, we hope you check out MoodFabrics.com for your next project!

Want to use one of our patterns to make a garment to sell? Our patterns are royalty-free! We just ask that you credit us with MoodSewciety.com or MoodFabrics.com in your product description.

♥ The Mood Sewciety Team

FOR SEWING INSTRUCTIONS:

Scan the QR code or visit  
MoodSewciety.com and search  
“MDF297”



1/2" seam allowances (SA's) included  
unless stated otherwise.

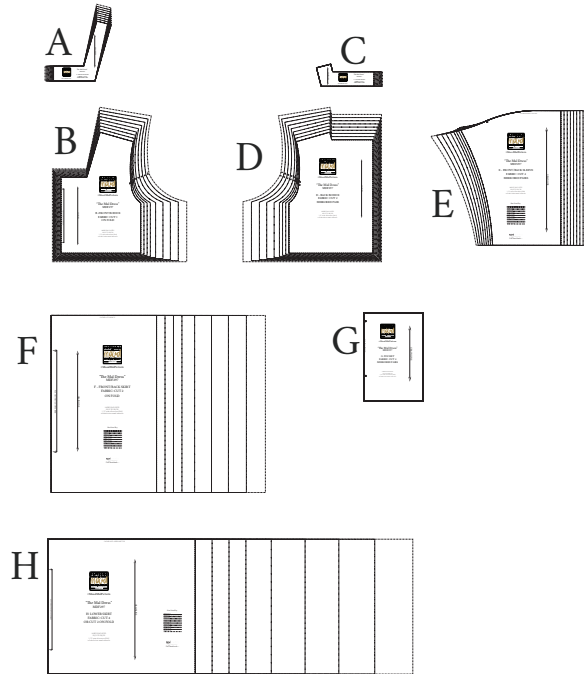
©2022 MoodFabrics.com / MoodSewciety.com  
Mass production, resale, or distribution of this  
pattern in any form is strictly prohibited.



MDF297  
 “The Mal Dress”  
 Ladies Duo-Sizes 00/0 to 28/30

#MoodMalPattern

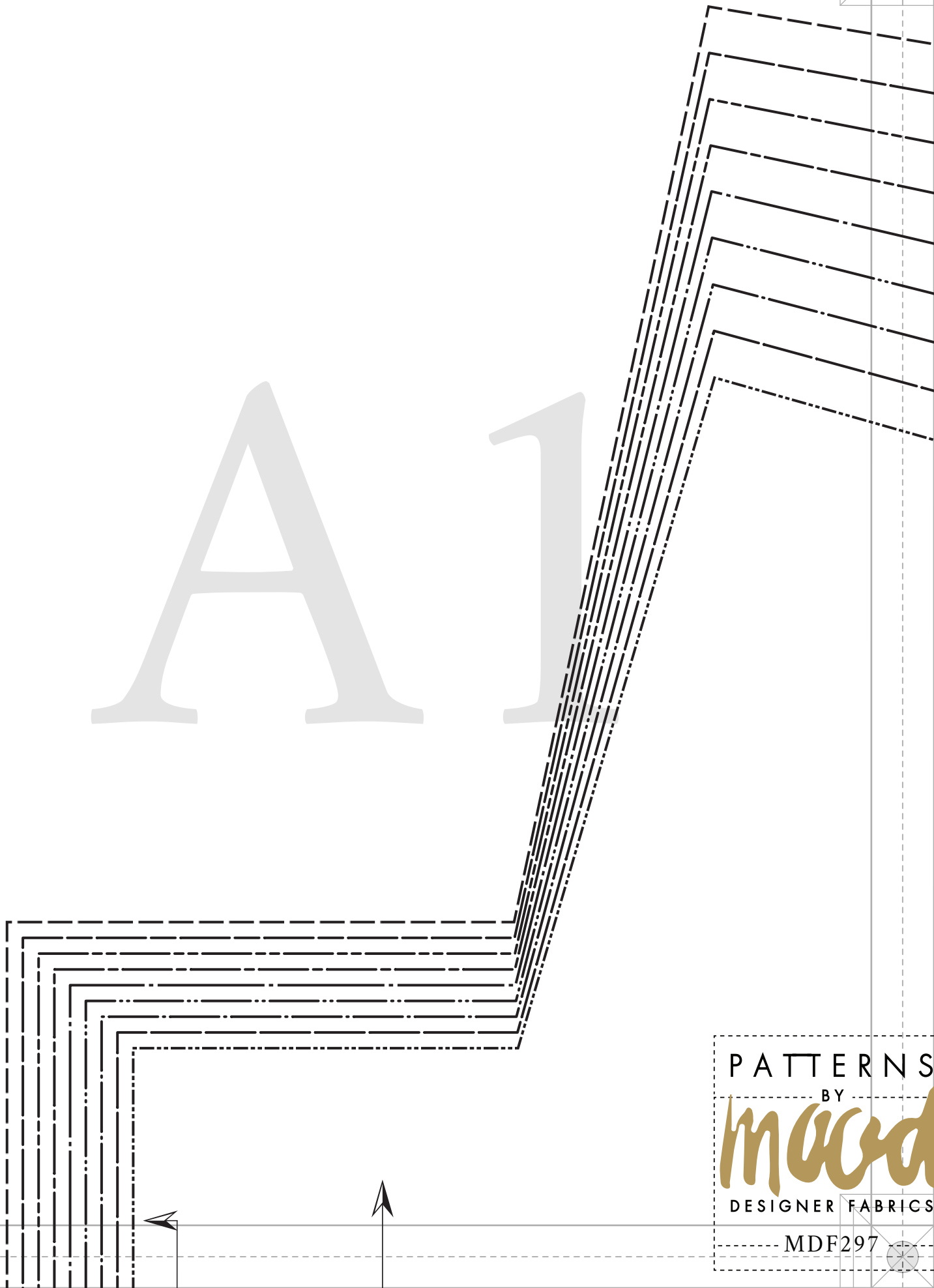
<b>A</b>	A - FRONT FACING FABRIC: CUT 2 MIRRORED PAIR
<b>B</b>	B - FRONT BODICE FABRIC: CUT 1 ON FOLD
<b>C</b>	C - BACK FACING FABRIC: CUT 2 MIRRORED PAIR
<b>D</b>	D - BACK BODICE FABRIC: CUT 2 MIRRORED PAIR
<b>E</b>	E - FRONT/BACK SLEEVE FABRIC: CUT 4 MIRRORED PAIRS
<b>F</b>	F - FRONT/BACK SKIRT FABRIC: CUT 2 ON FOLD
<b>G</b>	G: POCKET FABRIC: CUT 4 MIRRORED PAIRS
<b>H</b>	H: LOWER SKIRT FABRIC: CUT 4 OR CUT 2 ON FOLD



Size Line Key

- SIZE 00/0 \_\_\_\_\_
- SIZE 2/4 \_\_\_\_\_
- SIZE 6/8 \_\_\_\_\_
- SIZE 10/12 \_\_\_\_\_
- SIZE 14/16 \_\_\_\_\_
- SIZE 18/20 \_\_\_\_\_
- SIZE 22/24 \_\_\_\_\_
- SIZE 26/28 \_\_\_\_\_
- SIZE 30/32 \_\_\_\_\_

A1



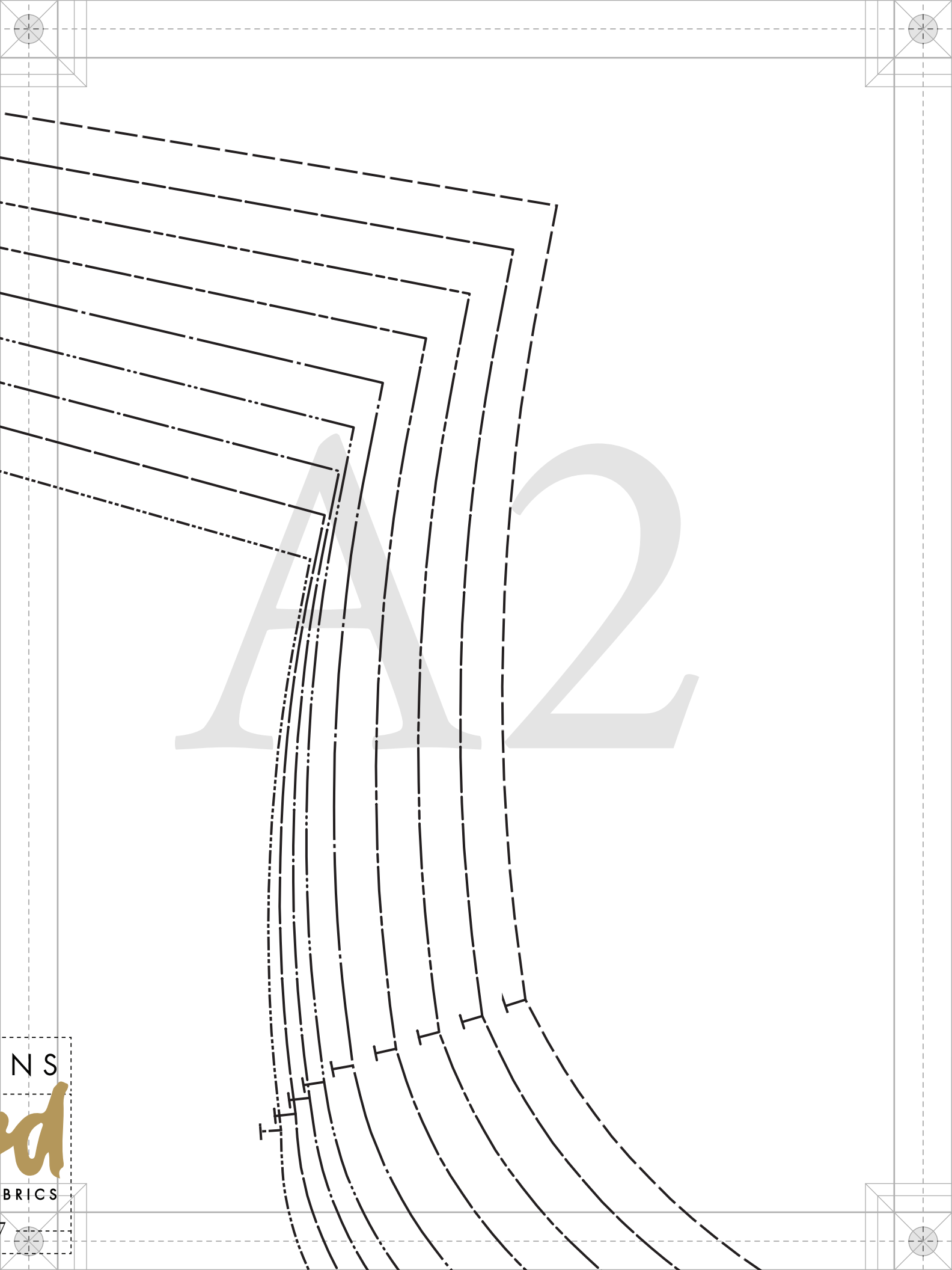
PATTERNS

BY

*maco*

DESIGNER FABRICS

MDF297



NS  
ed  
BRICS

A series of seven overlapping, slanted rectangular frames, each containing a different line style for tracing: solid, dashed, dash-dot, and dotted. The frames are arranged in a descending staircase pattern from the top-left towards the bottom-right. Small horizontal tick marks are placed along the bottom edge of each frame to indicate the starting point for tracing.



#MoodMalPattern

**“The Mal Dress”**  
MDF297

**G: POCKET**  
**FABRIC: CUT 4**  
**MIRRORED PAIRS**

LADIES DUO-SIZES  
00/0 TO 28/30  
1/2" seam allowances (SA's)  
included unless stated otherwise.



GRAINLINE

POCKET OPENING



A 4

P A

m  
DESIGN

#Mood

“The M  
M

PATTERNS  
BY  
*mood*  
DESIGNER FABRICS  
MDF297

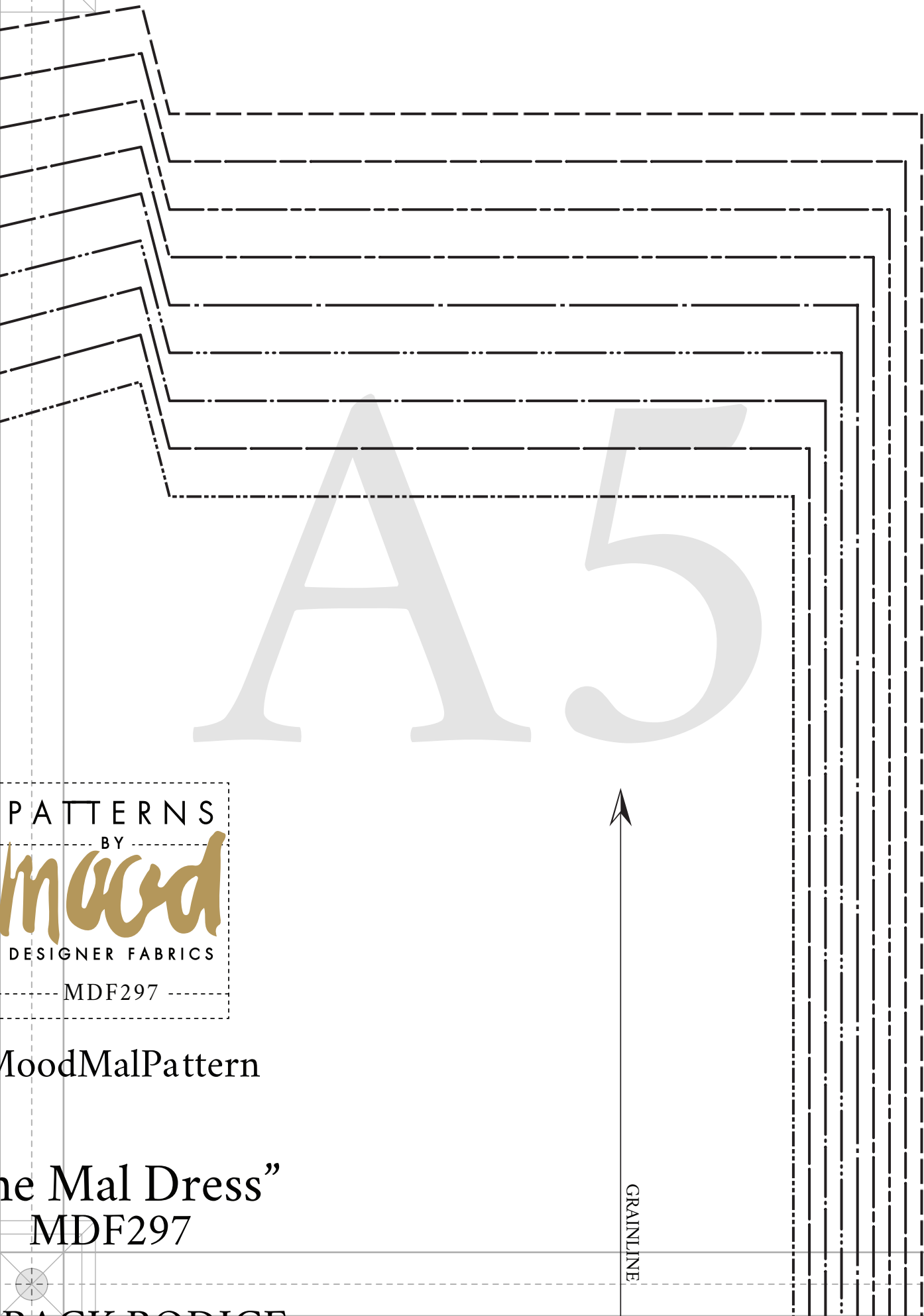
MoodMalPattern

the Mal Dress”  
MDF297



GRAINLINE

A5





#MoodMalPatter

# “The Mal Dre MDF297

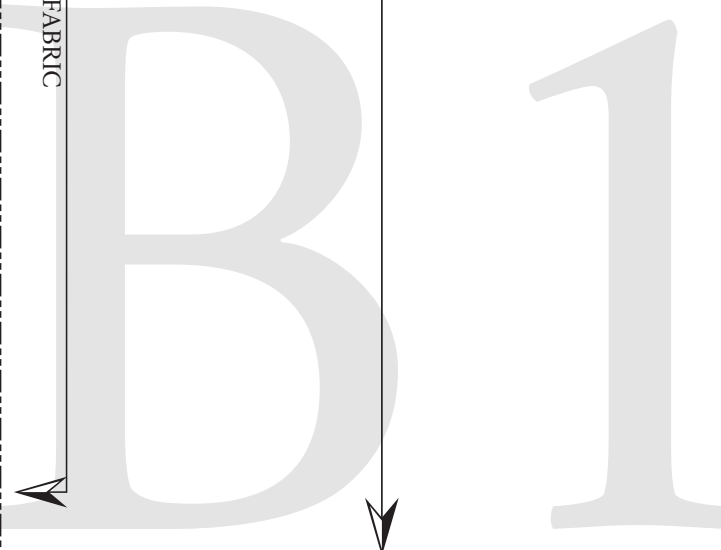
## B -FRONT BOD FABRIC: CUT ON FOLD

LADIES DUO-SIZES  
00/0 TO 28/30

1/2" seam allowances (S  
included unless stated other

PLACE ON FOLD OF FABRIC

GRAINLINE



PLACEMENT



Pattern

Dress”  
97

BODICE  
CUT 1  
BLD

SIZES  
/30  
nces (SA's)  
d otherwise.

B2

OPTIONAL FOLD PLACE



B 3



D - BACK  
FABRIC  
MIRROR

LADY  
00/  
1/2" sea  
included un

B4

PLACE ON FOLD OF FABRIC

# BACK BODICE

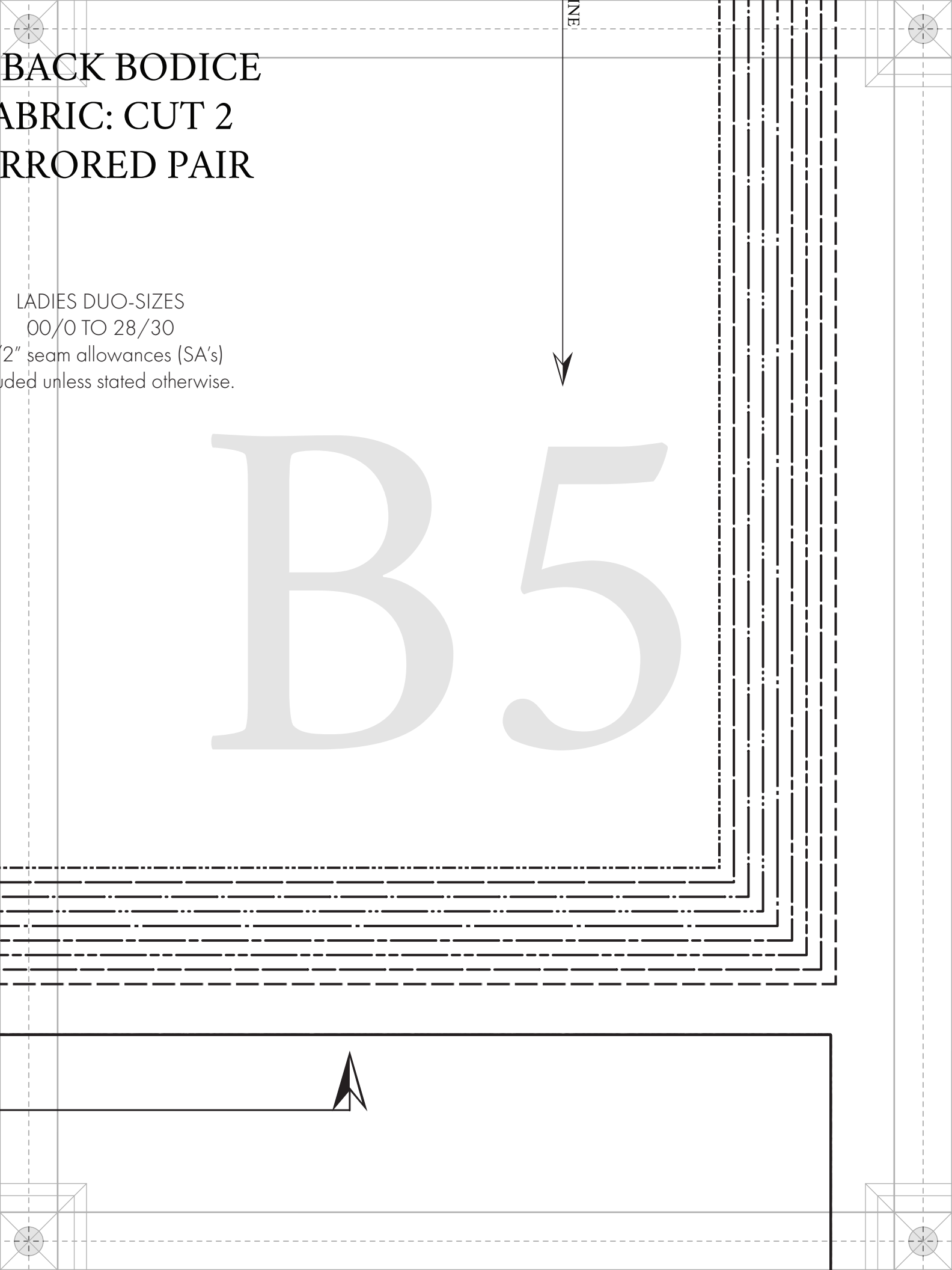
FABRIC: CUT 2

MIRRORED PAIR

LADIES DUO-SIZES  
00/0 TO 28/30  
1/2" seam allowances (SA's)  
included unless stated otherwise.

LINE

B5



# H: LOWER SKIRT

FABRIC: CUT 4

OR CUT 2 ON FOLD

LADIES DUO-SIZES

00/0 TO 28/30

1/2" seam allowances (SA's)  
included unless stated otherwise.

C



LINE



#MoodMalPattern

“The Mal Dress”  
MDF297



GRAINLINE

H: LOWER SKIRT

SIZE 14/16

SIZE 18/20

SIZE 22/24

SIZE 26/28

SIZE 30/32



*mad* SEWCETY  
IN COLLABORATION WITH  
PatternHack.com



GATHER INTO UPPER SKIRT TIER



“The Mal Dress”  
MDF297

F - FRONT/BACK SKIRT

FABRIC: CUT 2  
ON FOLD

GRAINLINE

LADIES DUO-SIZES  
00/0 TO 28/30  
1/2" seam allowances (SA's)  
included unless stated otherwise.

Size Line Key

SIZE 00/0

SIZE 2/4

SIZE 6/8

SIZE 10/12

SIZE 14/16

SIZE 18/20

GATHER INTO BODICE

15



PATTERNS  
BY  
**Mood**  
DESIGNER FABRICS  
MDF297

#MoodMalPattern

“The Mal Dress”

SIZE 00/0

SIZE 2/4

SIZE 6/8

SIZE 10/12

SIZE 14/16

SIZE 18/20

SIZE 22/24

SIZE 26/28

SIZE 30/32

**mad** SEWCIEITY

IN COLLABORATION WITH

**PatternHack**.COM

DI

D2

Size Line Key

SIZE 00/0

D 3

D 4

D5

E1



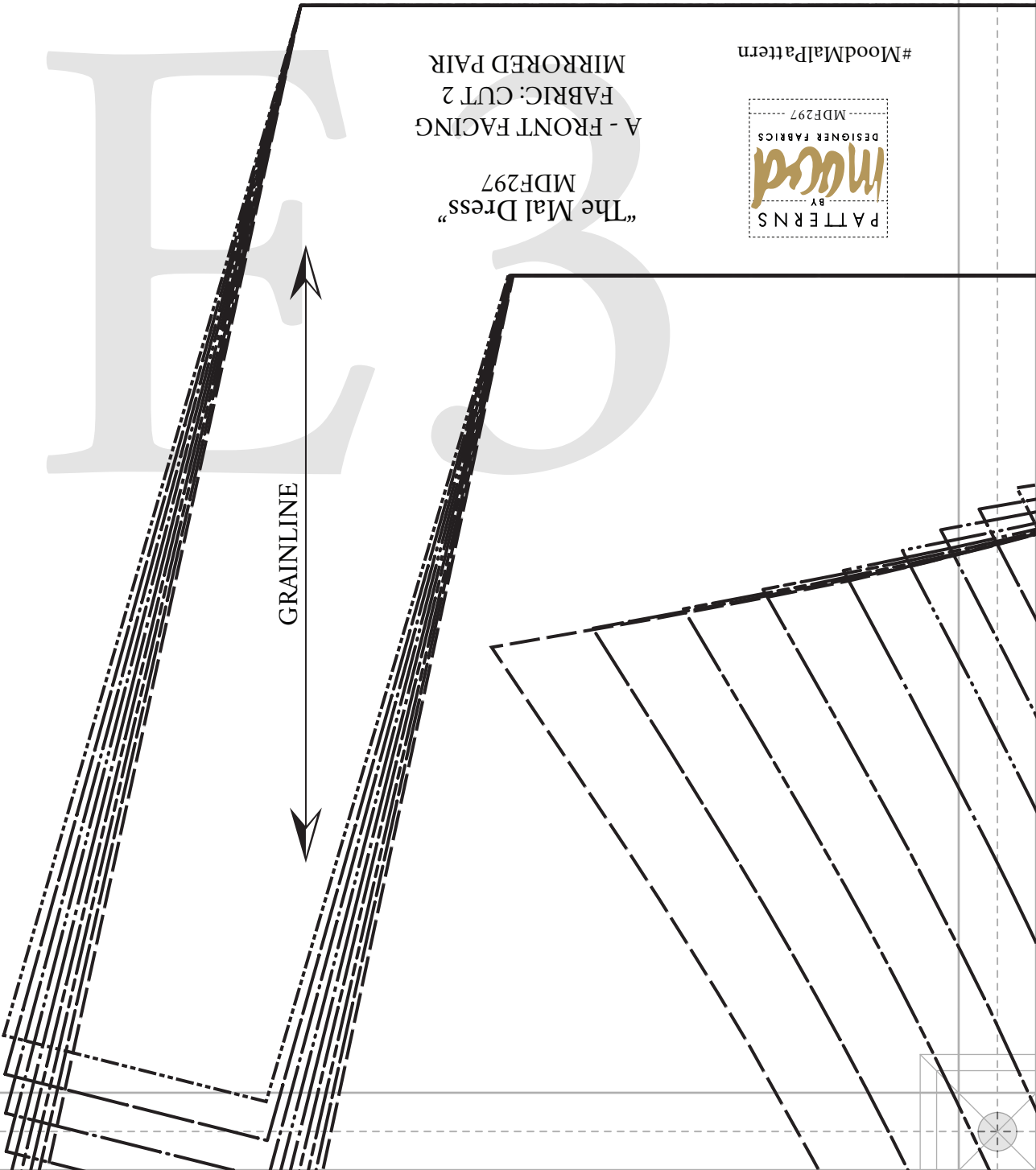
E2

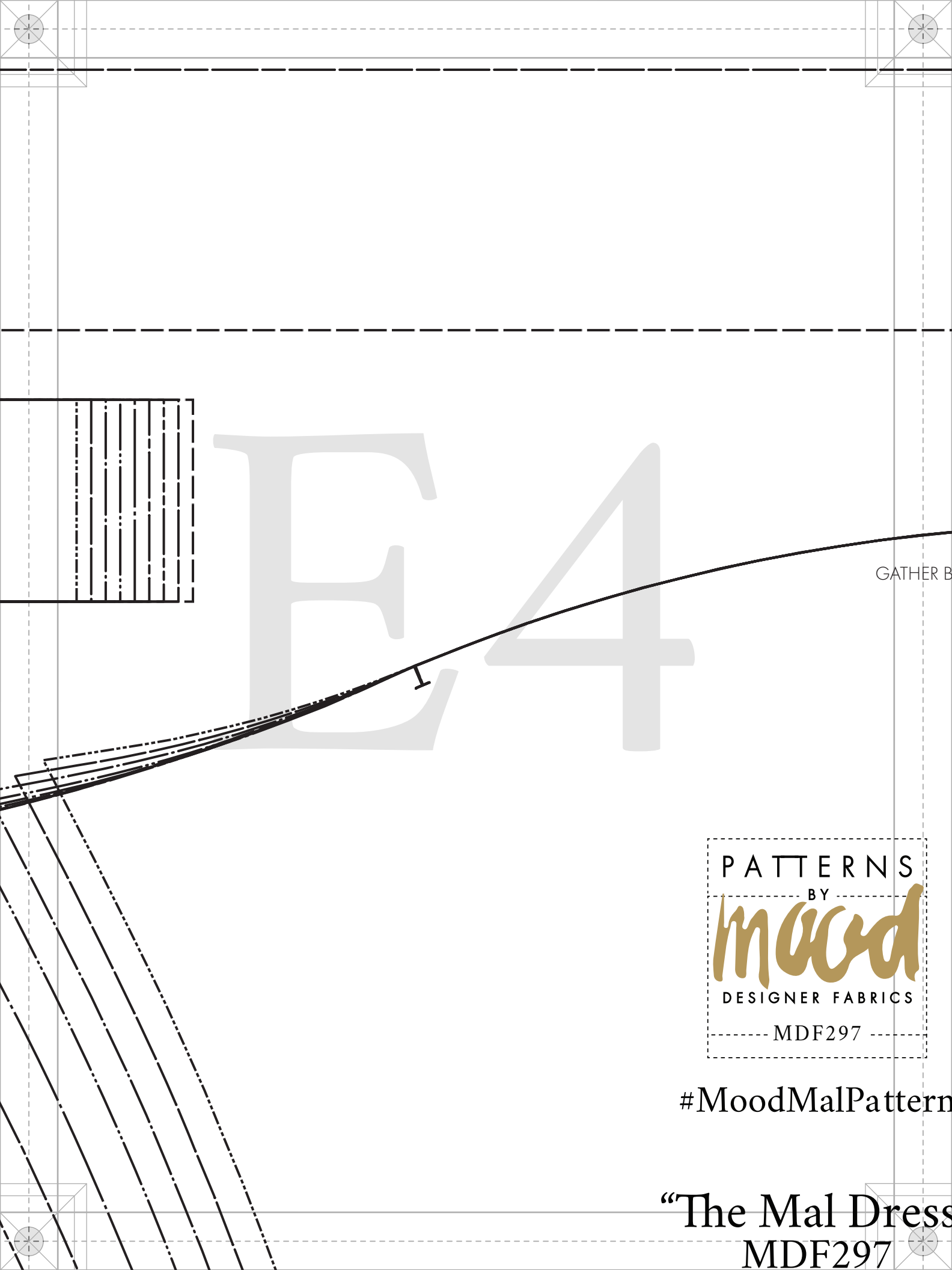
#MoodMaIPattern



"The Mal Dress"  
MDF297  
A - FRONT FACING  
FABRIC: CUT 2  
MIRRORED PAIR

GRAINLINE





GATHER B

E4

PATTERNS  
BY  
*mood*  
DESIGNER FABRICS  
MDF297

#MoodMalPattern

“The Mal Dress  
MDF297

ATHER BETWEEN NOTCHES

E5



S



cs

tern

ress”

F1

F2



GRAINLINE

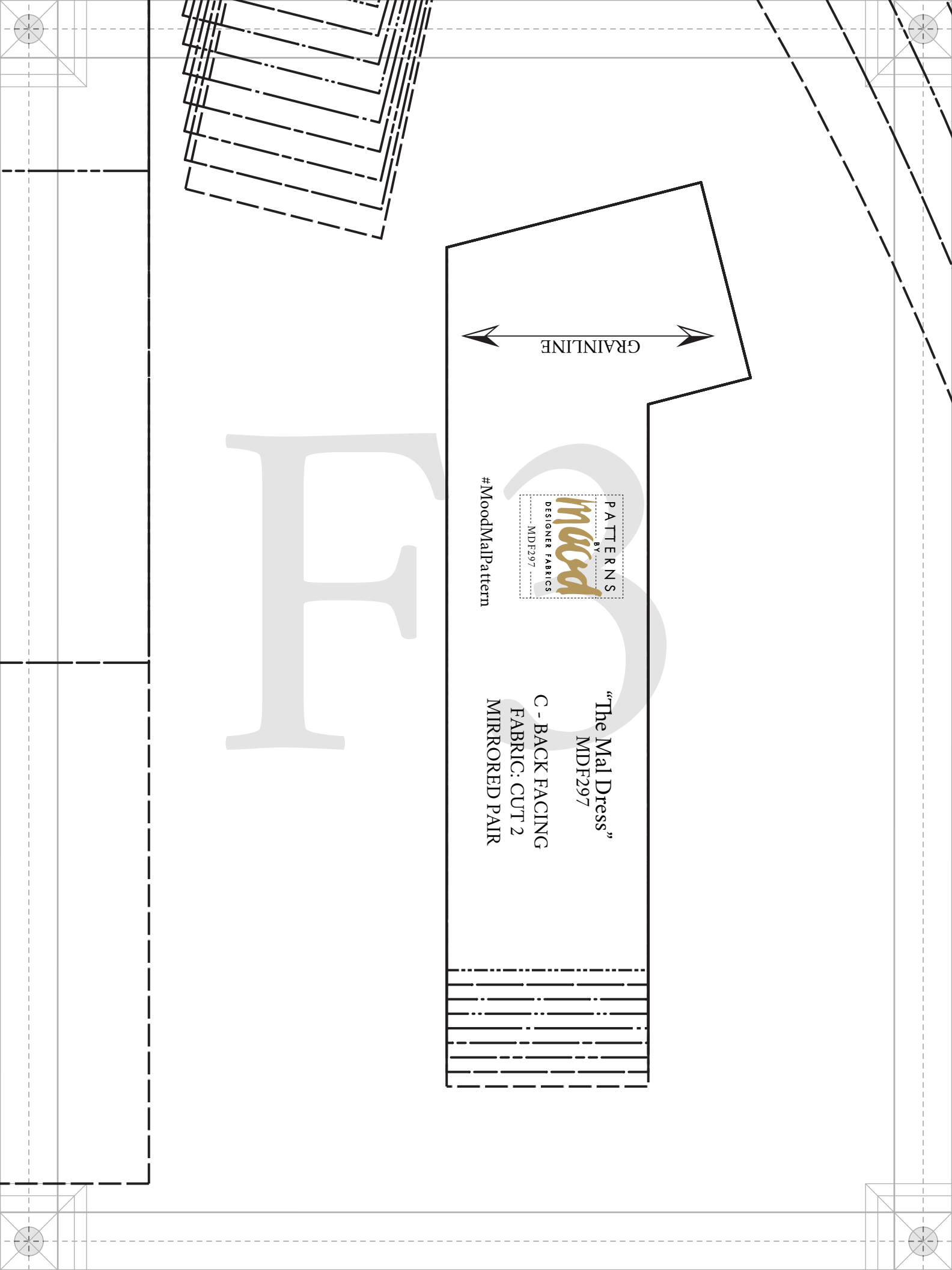
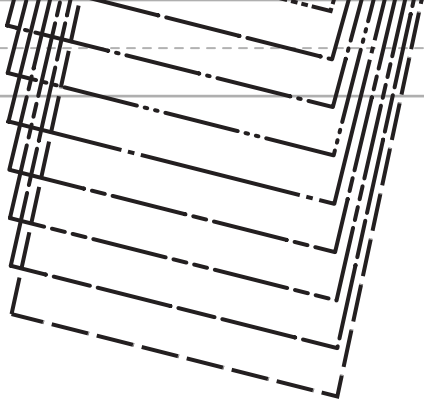


#MoodMalPattern

“The Mal Dress”  
MDF297

C - BACK FACING  
FABRIC: CUT 2  
MIRRORED PAIR

EM



E - FRONT/BACK SL  
FABRIC: CUT 4  
MIRRORED PAIR

LADIES DUO-SIZES  
00/0 TO 28/30  
1/2" seam allowances (SA's)  
included unless stated otherwise

Size Line Key

SIZE 00/0

SIZE 2/4

SIZE 6/8

SIZE 10/12

SIZE 14/16

SIZE 18/20

SIZE 22/24

SIZE 26/28

SIZE 30/32

*mood* SEWCİETY

IN COLLABORATION WITH

PaTternHack.com



CSS

# SLEEVE T 4 PAIRS

S  
(SA's)  
erwise.



DM

GRAINLINE

