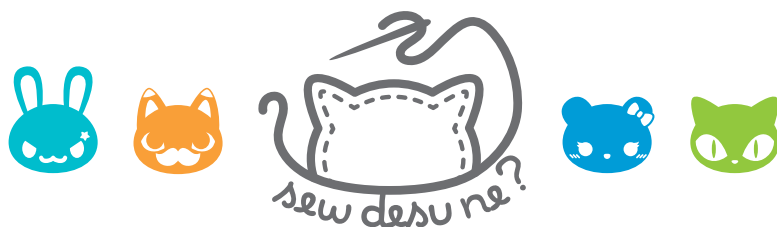


frog plush



A FREE SEWING PATTERN BY



frog plush

Ribbit! This pint-sized frog is the amphibious friend you've been looking for! It has a semi-realistic body, with a simple round torso, tiny arms and legs, and big charming eyes. It looks great in loads of colors, whether you're matching nature or not!

Also with only 6 pattern pieces and a basic body shape, it sews up rather quickly. It just has a bit of hand sewing for the feet and arms.

MAKES:

One plush: main body measures about 4½" tall, 4½" wide, and 6" long.

DIFFICULTY:



The hardest part of this plush is likely all of the strange curves in the hips. You can sew them one section at a time if you're new to sewing curves.

SKILLS USED:

- Fusible web applique
- Curved sewing
- Basting
- Ladder stitch
- Sewing small pieces
- Matching notches and points



sew desu ne?

| WWW.CHOLYKNIGHT.COM |

materials & tools:

- ¼ yd. of fabric for main body
- ¼ yd. or 9" x 9" of accent fabric for belly
- 3" x 3" piece of accent applique fabric (flannel, felt, fleece, cotton, etc.) for eyes
- 2" x 2" piece of black applique fabric for pupils and nostrils
- 1" x 1" piece of white applique fabric for eye shines
- 5" x 5" piece of light or heavy duty fusible web
- sewing thread to match main fabric and applique fabrics
- poly-fil stuffing
- basic sewing tools (sewing machine, scissors, iron, needles, pins, fabric marker, seam ripper)



SUGGESTED FABRICS:

Plush, stretchy fabrics such as fleece or minky are suggested. The variations of fleece and minky mentioned to the left would work well, but really any plushy fabric with a bit of stretch on the crosswise grain would be well-suited.

Stretch fabrics like **FLEECE** or **MINKY** will create a more squat, round shape when stuffed. Non-stretchy fabrics, like **FELT** or **COTTON**, won't stretch when stuffed so the resulting plush will look elongated as shown.



MINKY

VS.

FELT

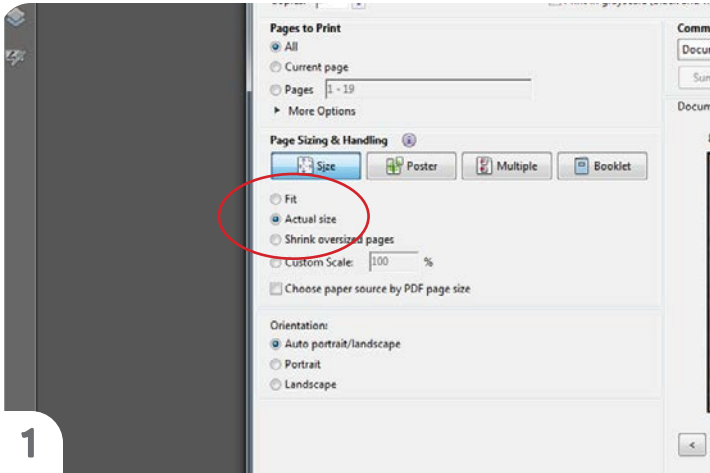


sew desu ne?

| WWW.CHOLYKNIGHT.COM |

printing the pattern:

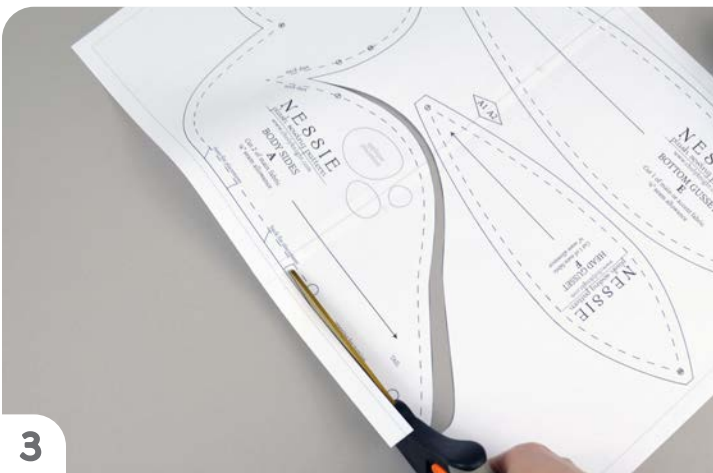
To print the pattern, set your computer to print **PAGES 16-17**. If you're unfamiliar with printing and assembling a .pdf pattern, read the steps below.



At the print dialog box, check the box that says print at “Actual Size” or 100%. Any other selection (such as “Fit to page”) will distort the pattern so it's slightly larger or smaller and we don't want that.



Print the pages needed for the file. You might have one or more. Either way, be sure you have the full collection by noting the page numbers in the corner.

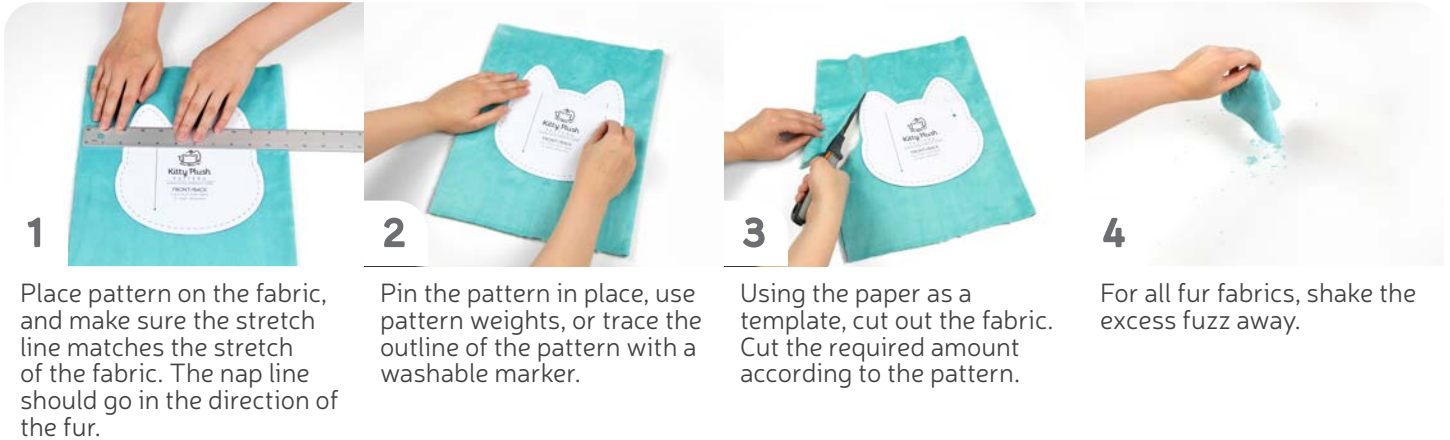


You can trace the patterns onto a different paper, or you can also just cut them straight from the printer paper. They might be a little hard to pin through, so you might want to use your longest pins. But you could also use pattern weights or trace the outlines onto the fabric with a washable marker and cut them out from there.

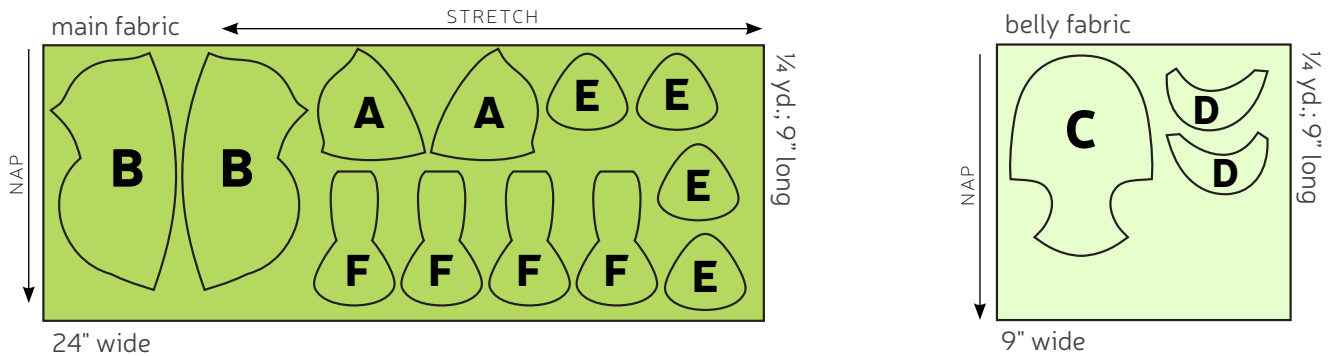
sew desu ne?

| WWW.CHOLYKNIGHT.COM |

cutting the fabric:



cutting layout:



BEFORE YOU BEGIN:

- Briefly read the project instructions so you know what to expect.
- If desired, mark the cut fabric pieces with the markings and symbols from the pattern. Or wait until the applicable step before transferring.
- Note that a 1/4" seam allowance is used throughout the project.

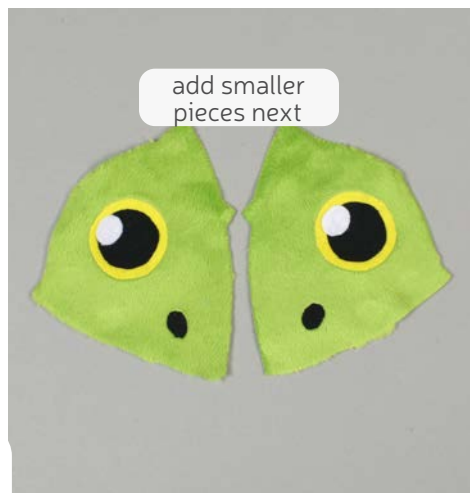
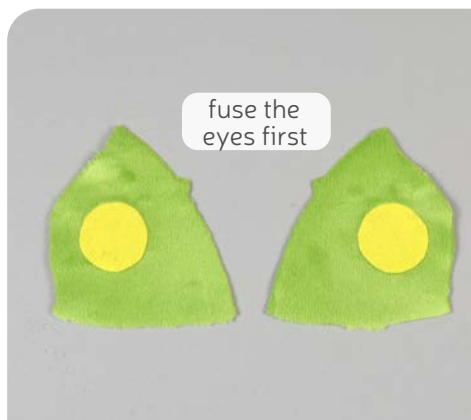
sew desu ne?

| WWW.CHOLYKNIGHT.COM |



1. PREPARE THE FACE APPLIQUE

- Take your fusible web and trace all your applique pieces onto the smooth (paper) side. You should have 2 **eyes**, 2 **pupils**, 2 **nostrils**, and 2 **eye shines**.
- Fuse the bumpy (adhesive) side onto the wrong side of your applique fabric. The **eyes** should go on an accent color, the **pupils** and **nostrils** on black, and the **eye shines** on white.
- Cut out the **eyes** and arrange them on the **HEAD FRONT (A)** piece. Set your paper pattern on top of the fabric piece (right sides up). Align the **eye** piece on top where the placement markings are. Then carefully pull the paper pattern away while holding the applique piece in place.



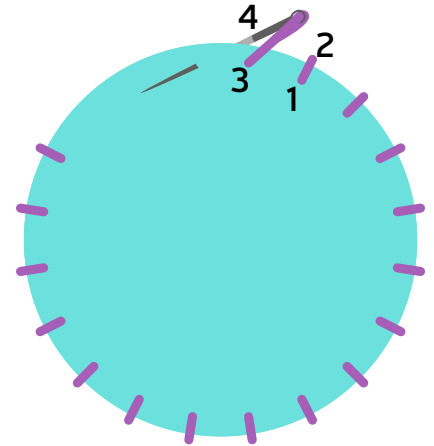
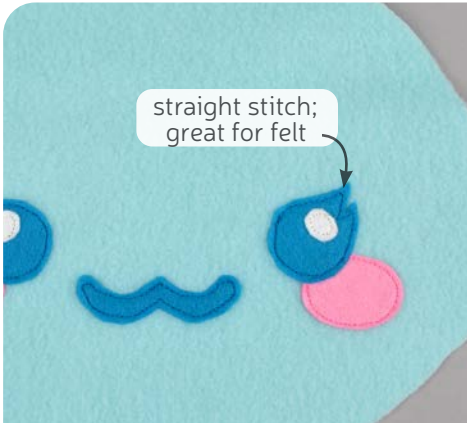
2. FUSE THE APPLIQUE

- Fuse the **eyes** in place with your iron. Use a press cloth (like a scrap piece of cotton) if you're using a polyester or fuzzy fabric like minky, that will help prevent harming or melting the fabric.
- Next, move onto the smaller pieces: the **pupils**, **nostrils**, and **eye shines**. Fuse them the same way as you did the **eyes**, using the paper pattern and photos as a guide.
- If you used heavy duty fusible web, you can keep the pieces fused without sewing, or you can sew them in place a number of ways. I've used a zigzag stitch here.

→ Refer to the next page for some other applique options.

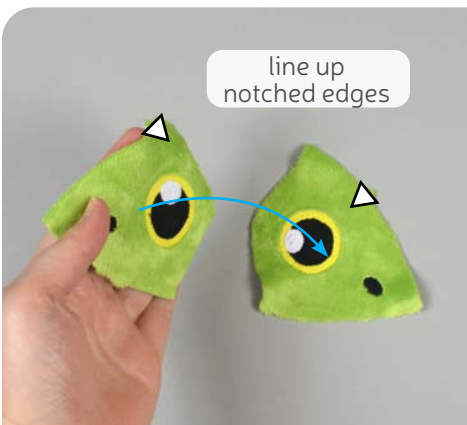
sew desu ne?

| WWW.CHOLYKNIGHT.COM |



3a. OTHER APPLIQUE OPTIONS

- Other good options for applique include a straight stitch, which involves sewing around the edge of the applique pieces with a straight stitch using matching thread -- about 1/8" in from the edge.
- You can also applique by hand; I prefer a whipstitch. Thread a hand-sewing needle with some matching thread and knot it. Bring the thread up from the back of the project; about 1/8" in from the edge of the applique shape. Bring it down perpendicular from the curve, just outside of the applique shape. This completes one stitch.
- For the next stitch, bring the needle back up about 1/8" away from the previous stitch and 1/8" in from the edge just as in the first stitch. Once again, bring it down just outside the applique shape. Continue this way until you've sewn around the shape.

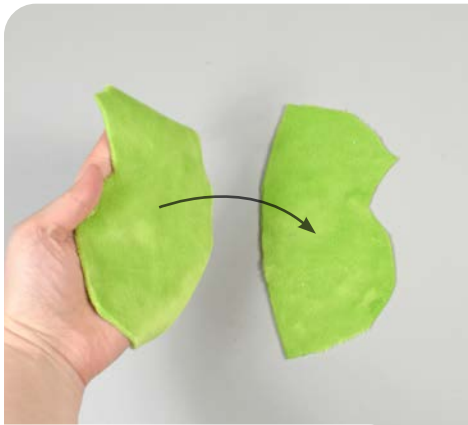


3. SEW THE HEAD FRONT

- Grab your **HEAD FRONT** pieces (A). Align them with right sides facing and the raw edges matching up. We'll be sewing them along the front edge, which is the edge with the **notch**. Align the **notches**.
- Sew the head front pieces together along the **notched** edge.
- Open up the pieces when complete for the full face!

sew desu ne?

| WWW.CHOLYKNIGHT.COM |



4. SEW THE BACK



- Grab your two **BACK** pieces (B). Align them with right sides facing and raw edges matching up.
- Sew them together along the **center back edge**. This also is labeled on the paper pattern for easy identification.
- Open up the pieces for the full back.



5. SEW THE HEAD TO THE BACK

- Grab your **HEAD FRONT** (A) from before and align the edge with the eyes along the **top edge** of the **BACK** (B) piece. This is the edge with the two curves for the eye bulges, but it's also labeled on the paper pattern for easy identification.
- Sew the head front to the back along these two curves.
- When complete, open up the pieces and this is now the back of your frog!

sew desu ne?

| WWW.CHOLYKNIGHT.COM |



6. SEW THE ARMS

- Grab your **ARM** pieces (F). Take two of them and align them with right sides facing and raw edges matching up.
- Sew them together along the long curved edge. Leave the very short straight edge open for turning the piece right side out later.
- Trim the excess seam allowance at the corners and tight curves to both reduce bulk and increase flexibility when the piece is turned later. Repeat this step with your remaining arm pieces for two arms total.



7. TOP STITCH THE ARMS

- Turn the **ARMS** (F) right side out through the openings and define the points with a chopstick or similar turning tool.
- The arms have extra **top stitching lines** to create the webbing for the flippers. Transfer the lines to the fabric by trimming along the stitching lines on the paper pattern. Then use it as a tracing template onto the fabric.
- Stitch along the traced lines to complete the top stitching.

TOP STITCHING:

One or several lines of straight stitching done on the outside of a project to serve a decorative purpose. A longer than average stitch length is typically used so the result is more visible.

sew desu ne?

| WWW.CHOLYKNIGHT.COM |

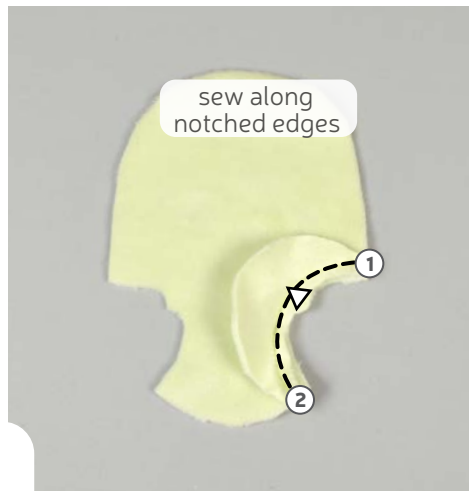
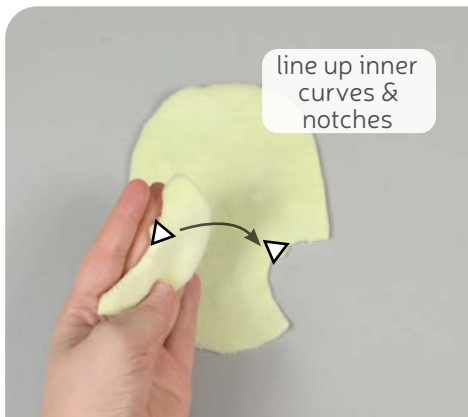


8. BASTE THE ARMS

- Stuff the **ARMS** lightly with stuffing. If possible, try to get small bits into each "toe" so they puff out and take shape. Then fill up the rest of the arm.
- If you haven't already, locate the **arm placement lines** found on the paper pattern for the **BACK** (B). Transfer them over to the right side of the fabric. Place the open end of the arms within these **placement lines**.
- Flip the arms to the inside so the raw edges match up. Baste the arms to the edge of the back fabric to hold them in place for future steps.

BASTING:

A form of temporary sewing meant to hold pieces in place. A long stitch length is often used for this reason. The finished result is not meant to be seen and sometimes is even removed later (depending on your project).



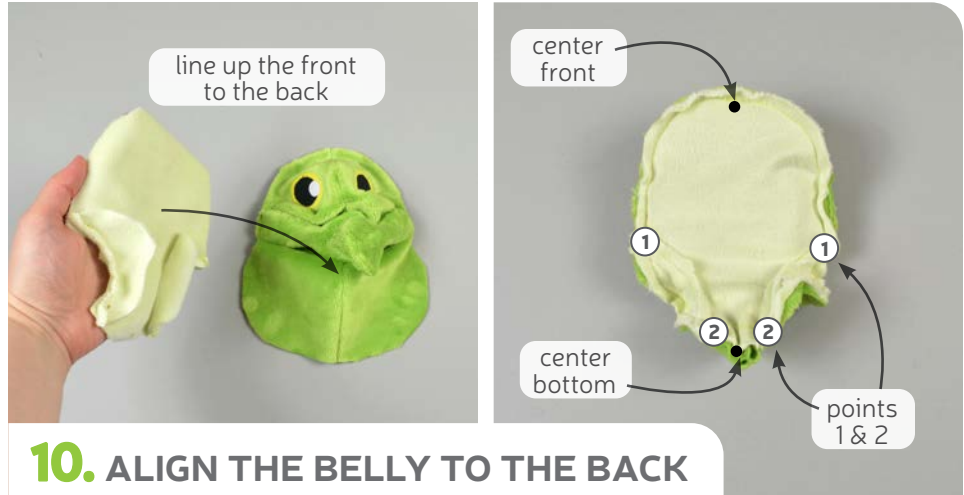
9. SEW THE INNER LEGS

- Grab your **BELLY** (C) and **INNER LEG** pieces (D). Align the inner curve of the inner leg with the inner curve of the belly. Match up the **notches** on both pieces to help ensure they're not flipped the wrong way. They also have **numbered points**, which will be helpful later in step 11.
- Sew the inner leg to the belly along the inner curve from **points 1 to 2**.
- Repeat with the other inner leg piece so both are joined.

sew desu ne?

| WWW.CHOLYKNIGHT.COM |

- a. Grab both of your **BELLY** and **BACK** pieces so far. Align them with right sides facing. Before you pin, note that there are certain crucial points that should match up. We'll go over them in general here, for advanced sewers. Then in the next step it will be in more detail.
- b. In the head/chin area, match up the **center front marking** with the **head front seam**.

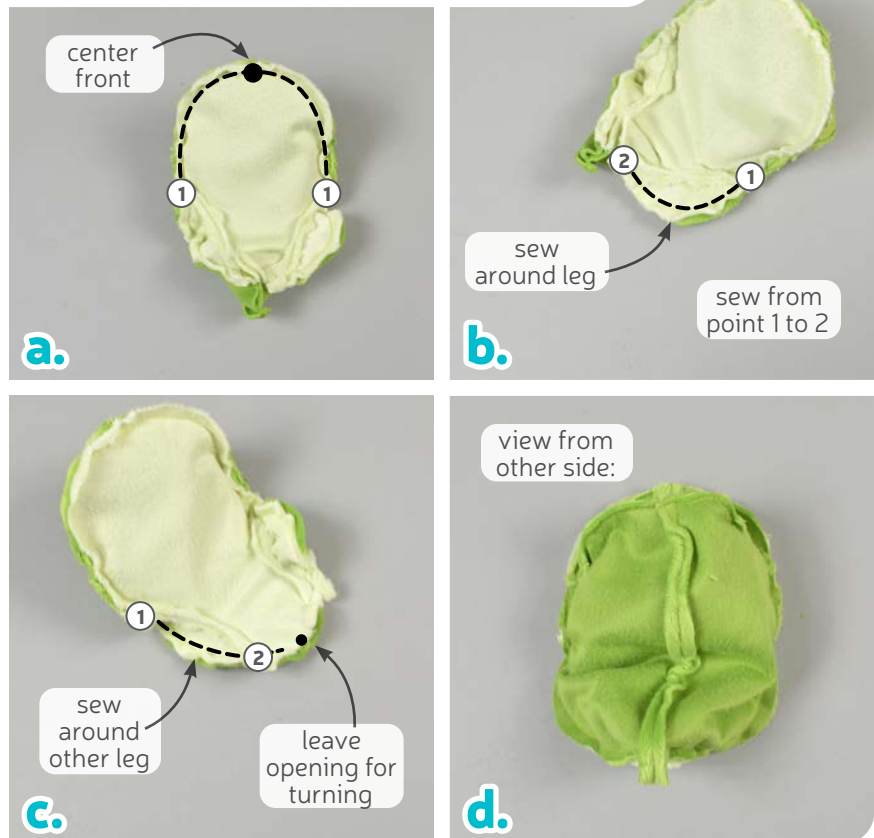


10. ALIGN THE BELLY TO THE BACK

At the body, **points 1** and **2** from the **INNER LEGS**, **BELLY**, and **BACK** should also align. The **center bottom circle marking** on the belly will also match the **back seam** (from step 4).

- a. Begin by pinning and sewing the head/chin area. Line up **point 1** at the top of the legs. Then match up the **center circle marking** with the **head front seam**.
- b. Next, line up the side of the body pieces. This is the edge starting at **point 1**. Pin and sew around the leg. This is the outer curve going around the **INNER LEG** piece (D) and joins to the outer curve of the **BACK** (B). It starts at **point 1** and goes around to **point 2**. Sew the belly to the back around this side.
- c. At the edge between the legs, the **center circle marking** on the belly will match up with the **back seam** (from step 4). Leave an opening for turning between the legs. Lastly, finish up the other side by sewing around the other leg. This should take you all the way around the body.
- d. Photo D shows what the body will look like with the belly facing down.

11. SEW THE BELLY TO THE BACK



sew desu ne?

| WWW.CHOLYKNIGHT.COM |

- a. Finish by clipping the seam allowances at the corners of the body, particularly at **points 1 and 2**.
- b. Turn the body right side out through the opening between the legs.



12. CLIP & TURN THE BODY

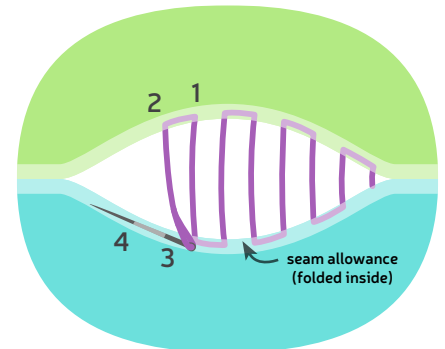


13. STUFF THE BODY

- a. Stuff the frog firmly with stuffing. Start by filling up the head most of the way.
- b. Then sneak an extra bit into each eye so you get a little bulge. The head stuffing that's already there will help hold it in place.
- c. Then stuff the legs the same way. Fill up most of the body, and before you finish sneak some extra stuffing into the legs. This will help keep the stuffing in place and the legs won't deflate later.

sew desu ne?

| WWW.CHOLYKNIGHT.COM |



14. SEW THE BODY CLOSED

- Once the plush is stuffed, make sure the seam allowances in the opening are tucked inside and prepare to ladder stitch it closed. Thread a hand-sewing needle and knot it at the end. Insert the needle from the inside of the opening and out of the plush near one edge of the opening. This will leave the knot inside the plush.
- Continue from here doing a ladder stitch. Take a 1/8" stitch into the fold of one side of the opening, then go across and take another. Keep going down the opening until you reach the end.

- When you're finished, stitch a knot into the end of the seam. Then insert the needle near the finished knot and out of the plush about 1-2" away.
- Pull the thread through and hold it taut while snipping the thread. The excess thread should sink back inside the plush -- all hidden!



15. CLIP THE THREADS

sew desu ne?

| WWW.CHOLYKNIGHT.COM |



17. SEW THE FEET

- Grab your **FOOT** pieces (E). Take two of them and align them with right sides facing and raw edges matching up.
- Sew them together all around the shape, but leave an **opening for turning** on one side as indicated by the paper pattern.
- Trim the excess seam allowance at the corners to reduce bulk when the pieces are turned later.



18. TOP STITCH THE FEET

- Turn the **FEET** right side out through the openings and define the points with a chopstick or similar turning tool.
- The feet have extra **top stitching lines** to create the webbing for the flippers. Transfer the lines to the fabric by trimming along the **top stitching lines** on the paper pattern. Then use it as a tracing template onto the fabric.
- Stitch along the traced lines to complete the top stitching.

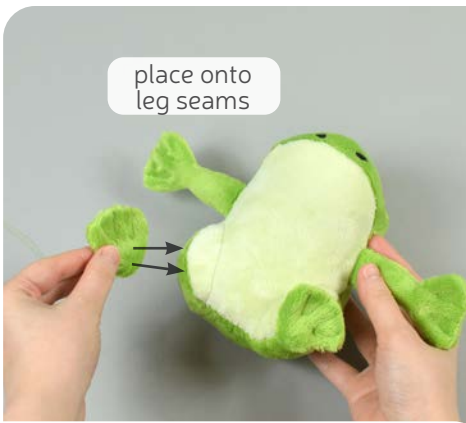
sew desu ne?

| WWW.CHOLYKNIGHT.COM |

- a. Stuff the **FEET** lightly with stuffing. If possible, try to get small bits into each "toe" so they puff out and take shape.
- b. Ladder stitch the opening in the feet closed following the process from back in step 14. If you have a lot of thread left over, you can leave it attached to sew the feet to the body next.



19. STUFF AND CLOSE THE FEET



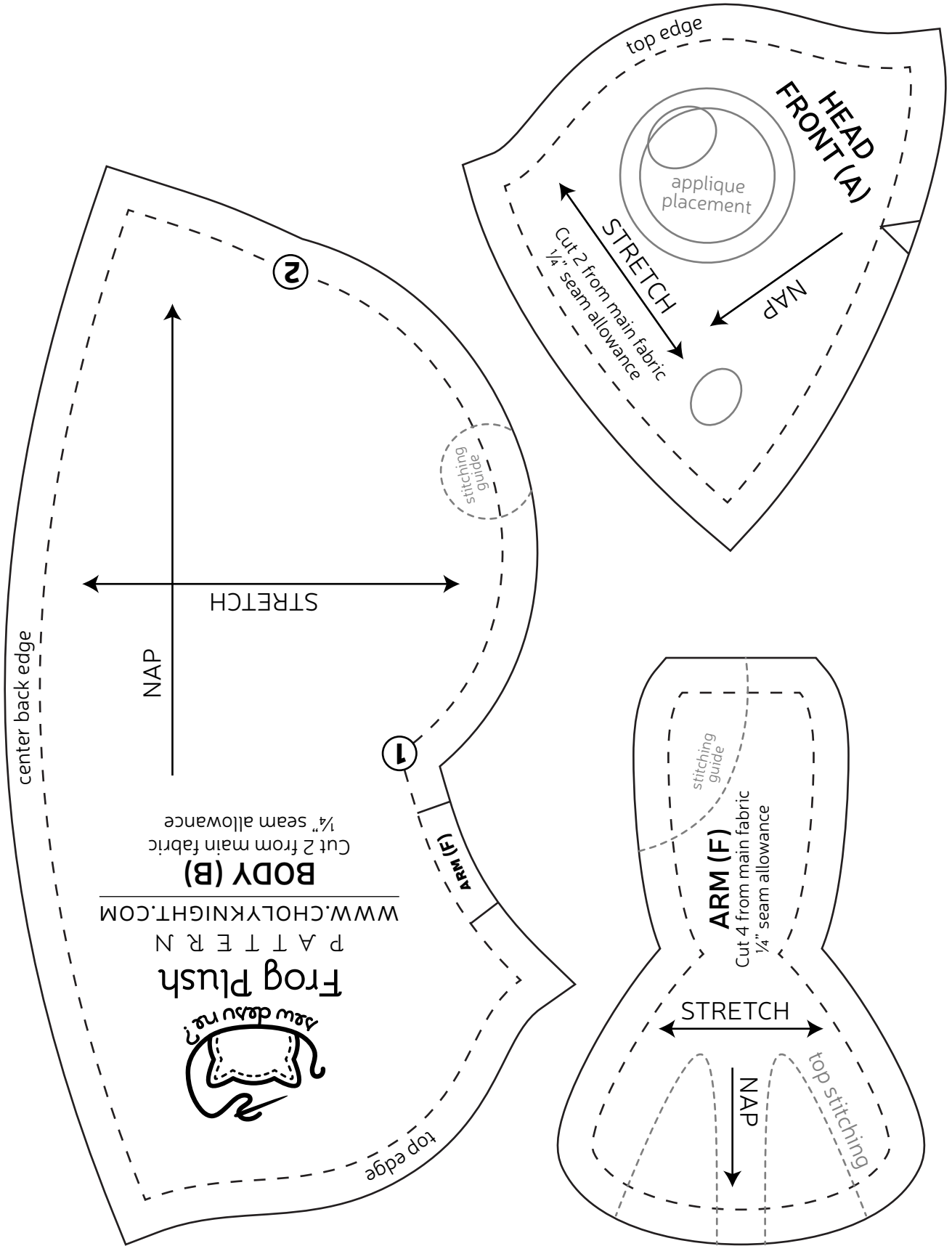
20. ATTACH THE FEET

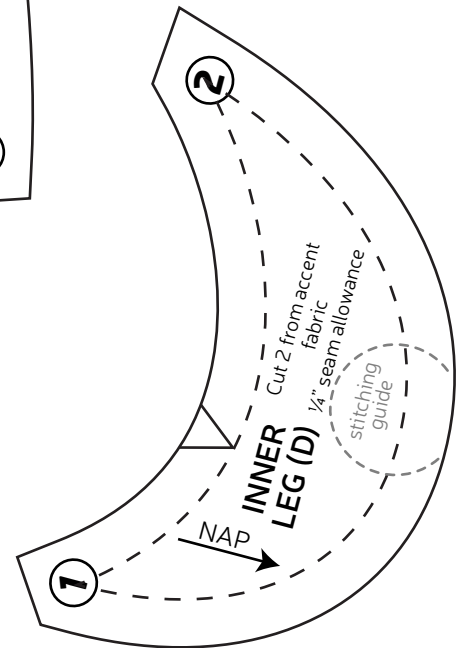
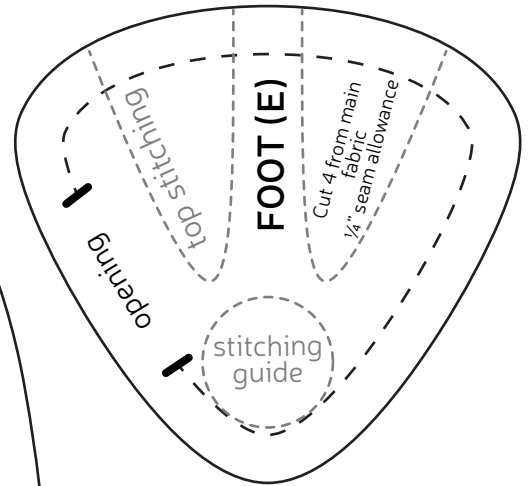
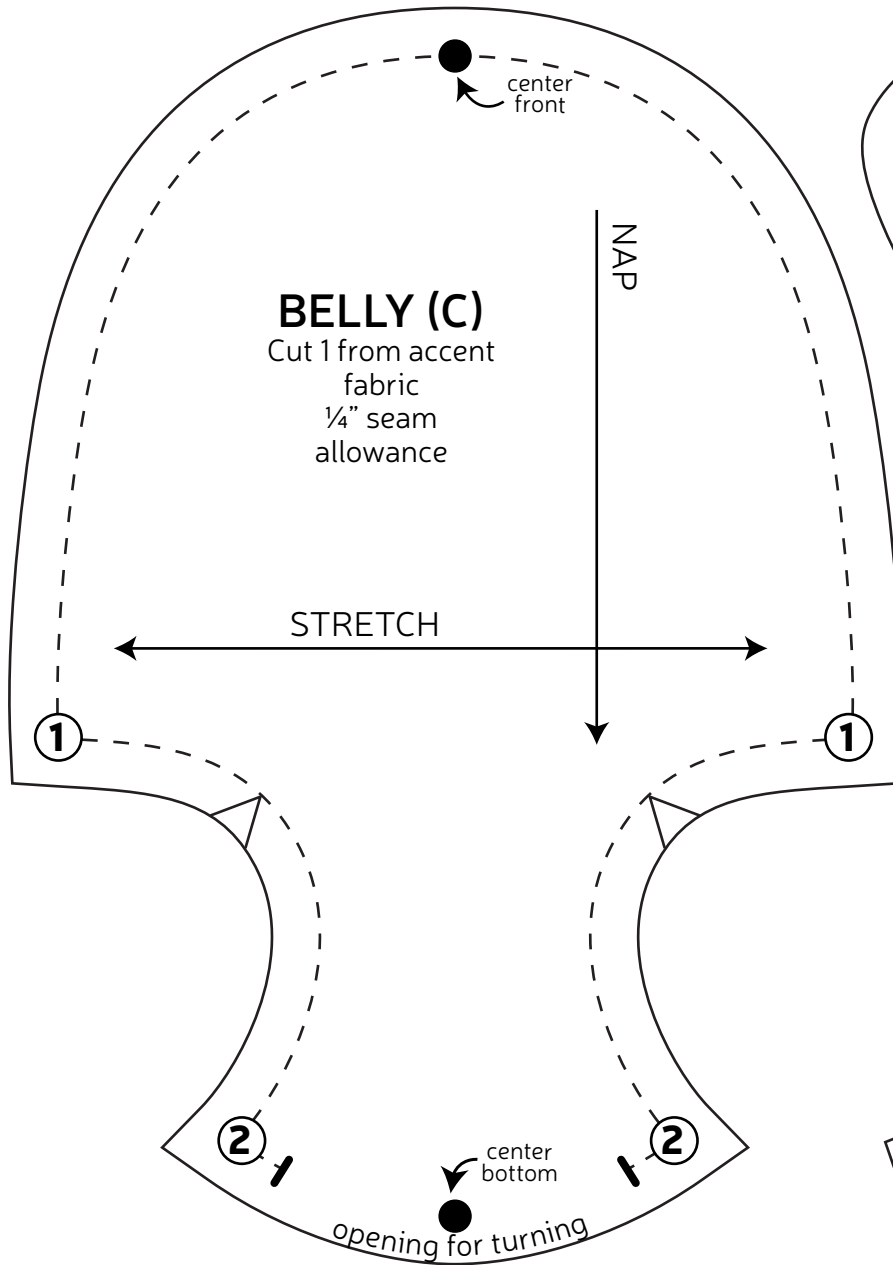
- a. Take your finished **FOOT** (E) and align the base of the foot over the center of the leg seam. There are **stitching guides** on the paper pattern for extra guidance, or you can refer to the photo.
- b. Ladder stitch the base of the foot to the leg similar to back in step 14. Go around with long stitches for the first pass. Check that you like the placement, then go around again with tinier, neater stitches for the second pass. Repeat for both feet.
- c. Here the **ARMS** are also secured so they stay pointed downward and it supports the frog while sitting. To do this, fold the arms down and ladder stitch a small 'armpit' section of the frog to the belly. Once again there's a stitching guide on the paper pattern if you need extra help.

CONGRATS!
This completes your plush!
Now give it a big hug!

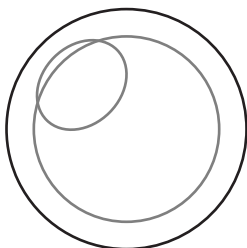
sew desu ne?

| WWW.CHOLYKNIGHT.COM |

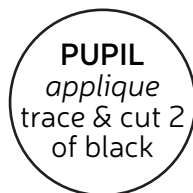




EYE
applique
trace & cut 2 of
accent color



PUPIL
applique
trace & cut 2
of black



NOSTRIL
applique
trace & cut 2
of black



EYE SHINE
applique
trace & cut 2
of white

