

So Sew Easy

On a Roll T-Shirt

Knit top with an interesting rolled neckline and 3 different close-fitting sleeve length options included.

This On a Roll T-Shirt comes with plenty of options to suit every taste and every occasion. Make it in something slinky or glittery for a night on the town, or try one of the three different sleeve lengths in a soft jersey for something cosy and casual.

Pattern includes negative ease around the bust with a looser fit in the body, to flatter your bust and hide your tummy!

For stretch knit fabrics only.



To print your PDF pattern

Your pattern comes at the end of the instructions, all in one file to make printing easy. Please make sure you are using the latest version of Adobe for best results. You can [download the latest version here](#) if you need to.

Open the PDF file in Adobe Reader. Select File → Print and the print dialogue box opens. Under Page Sizing and Handling, select SIZE, then select ACTUAL SIZE. Orientation for this pattern is PORTRAIT.



On the top edge of the first sheet is a test square. This box should measure 2 inches square. If yours is wildly different you will need to check your printer options to make sure the pages are not being resized. Some computer users have reported minor scaling issues printing PDF patterns using Windows 8.

Use the grey circle guides on the corners of the sheets to match up the pattern pieces, folding under or cutting off any overlaps, tape together and cut out your pieces.

Skill level – Beginner

The instructions for this t-shirt include instructions on picking stitches and finishes for use with knit fabrics. There are no complicated darts or zippers and the wide roll neck makes it easy to get a good finish. There is a tutorial video which will take you through everything.

I highly recommend the [Sewing with Knits](#) class if you want to learn more about how to get great results sewing with knit and stretch fabrics. So Sew Easy readers get an exclusive **20% off** discount!

Read through all of these instructions before starting your project and cutting your fabric.

Useful tutorials

You can find a range of useful sewing tutorials and videos at [So Sew Easy – tutorials page](#).



What size do I need?

Please use this table as a guide only as although our body measurements may be similar, different body shapes may require fitting differently. Fabrics with different thickness, drape and stretch will also affect the finished result and fit on this top, so use this table as a guide only. Compare the flat pattern measurements to your own body measurements.

Size	Bust (in/cm)
A	31 / 79
B	33 / 84
C	35 / 89
D	37 / 94
E	40 / 101
F	43 / 109
G	46 / 117

You can measure the paper pattern pieces to determine fit - want it closer fitting, pick a pattern size closest to your bust measurement. For a looser fit, pick the pattern size including a little more ease.

Always test the fit using the paper pattern pieces, or an inexpensive test fabric before cutting your expensive fabric for this top. If in doubt test the larger size and adjust for fitting at the side seams during construction.

Fabric requirements

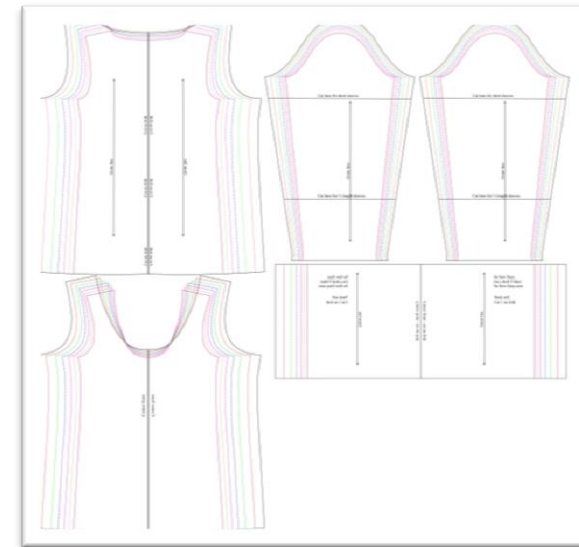
Knit fabrics, such as cotton jersey and t-shirt fabrics, with moderate stretch, that allow you to take a close-fitting t-shirt on and off. Solid colors look

good, as do random small or large patterns. Got horizontal stripes? – give it a go!

The sleeves are close fitting so chose a fabric with plenty of stretch.

My favorite supplier for jersey and knit fabrics is Fabric.com, with lots of great quality jersey solids and all the most fashionable prints and patterns at around just \$5 a yard.

Layout for maximum sized long sleeve version – assuming fabric 58 inches wide, needs 55 inches in length.



This tutorial is also available as a video

How to sew the On a Roll T-Shirt

Video tutorial



Prefer to watch a tutorial rather than read one? Then click on the picture above and visit the sewing tutorial on You Tube for the On a Roll T-shirt.

Directions

Seam allowances are 5/8th inch (1.5cm) throughout unless stated otherwise.

Abbreviations used – RST – right sides together.

Stitches to use – if using a regular sewing machine, you may have a stretch stitch – refer to your sewing machine manual.

If not, then you can use a narrow zig-zag stitch – try a stitch length of 2.5 and a width of 1.0. Always test your stitches on a scrap of fabric before starting your project and test for stretch.

You may finish your seams with an overcasting stitch or a zig-zag stitch. Most knit fabrics do not fray so you may also chose to leave the inside edges unfinished.

Always stop your stitching coming undone at each end of your seam by backstitching 2 or 3 stitches.

Neaten your seams – serge/overlock your seams, or finish with your favourite method. You may choose to leave the seams unfinished if your fabric doesn't fray, or simply trim to ¼ inch and overcast. Trim, neaten and finish seams as you go.

Let's start to sew !

1. Print and assemble your pattern. Check the size of the test square – see above. Cut out your pattern pieces.
2. Pre-wash and iron your fabric according to fabric care instructions.
3. Use your pattern pieces to cut your fabric. Remember to cut pieces on the fold where indicated.
4. Join shoulder seams, RST. Use stay tape or clear elastic to stabilize shoulders if you like - optional.



Find more great sewing patterns at So Sew Easy – <http://so-sew-easy.com>



5. Find center of sleeve and match to shoulder seam, RST. Pin then stitch the sleeve to the arm hole opening. Repeat for the other side.

6. Pin then stitch the side seam and sleeve seam, matching seams at the underarm.



7. Stitch the neck roll piece RST, on the short end. Turn the right side out.



8. Fold neck roll in half length-ways and match raw edges. Find the quarters and mark with pins. Do the same with the shirt neckline edge.



9. Match up the quarters of the neck roll with the quarters of the neckline edge, and pin, matching raw edges with RST.



10. Ease the two edges to meet, stretching the neckline edge to match the neck roll, pin and then stitch in place.



11. Finish sleeves and hem. See this tutorial on [using a double needle to hem knits](#).



12. Wear your finished top, love it and make another!



Thank you for downloading this On a Roll T-shirt pattern and tutorial. I hope you enjoyed making this project and remember that I love to share your creations at So Sew Easy so drop me an email with a photo at

deby@so-sew-easy.com

or upload your completed projects to the pattern page on Craftsy.

Find more great sewing patterns at So Sew Easy – <http://so-sew-easy.com>



You might enjoy my other tutorials and sewing patterns at So Sew Easy, including:

Wrap Dress	Sew A Skirt beginner tutorial series
Twist Front Top	Double Layer Chiffon/Lace Blouse
Easy Summer Dress	30 Minutes Easy Skirt
Summer Drape Top	Cheeky Panties
Custom Fit Skirt	Custom fit leggings
Boxy Bag	Little Black Party Dress
Easy Cosmetics Bag	On a Roll T-shirt
Super Simple Wallet	Slouchy Sweater
Classic Straight leg knit pants	Gathered front top
Make it Yours Clutch Bag	Waterfall top
Reversible Apron	Carry All Bag
Cowl Neck Top	Wear Everywhere Dress
Sew Simple Leggings	Easy Breezy Blouse

For the latest list of patterns available, pop on over to my [designer page at Craftsy](#).

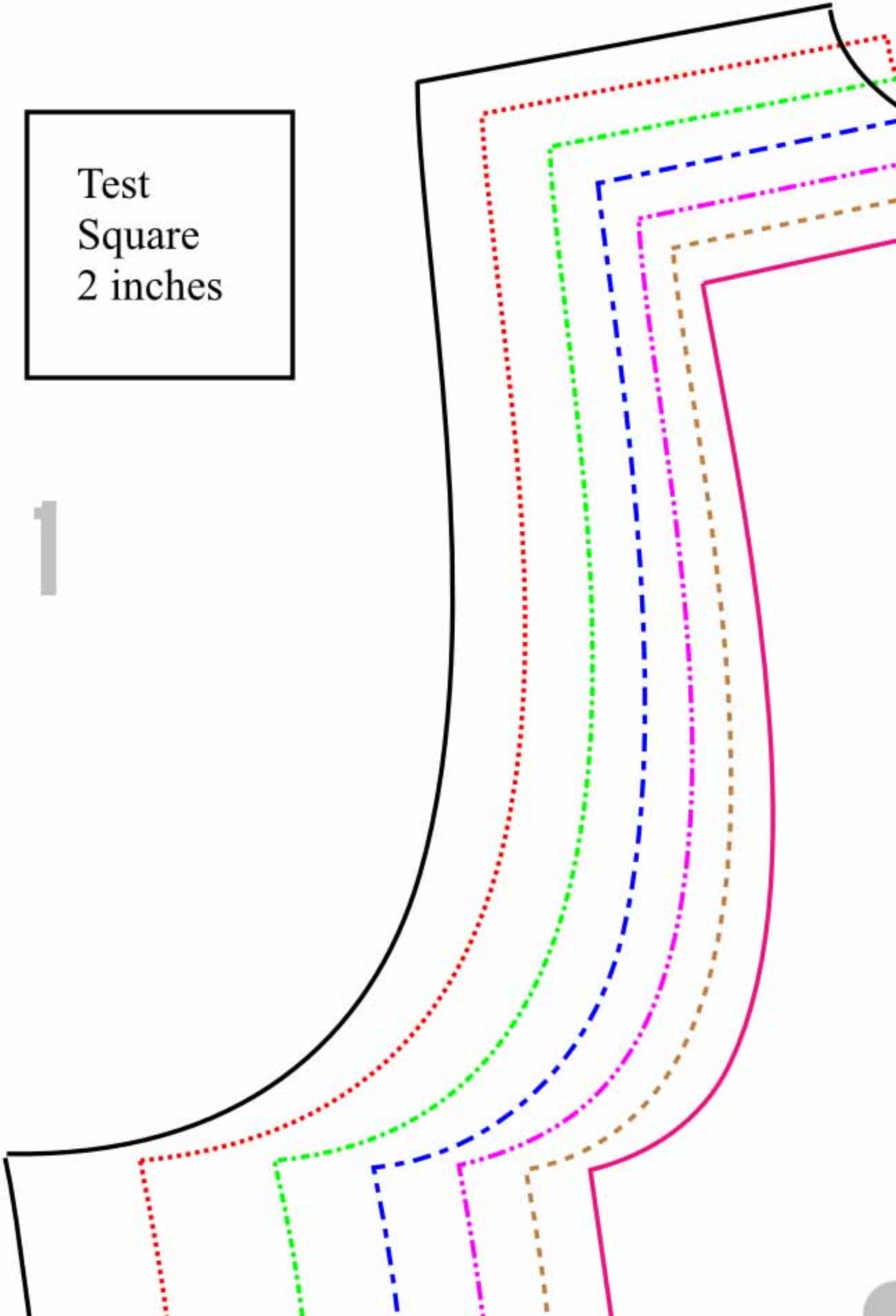
This pattern graphic, the photos and the instructions are copy right Deby Coles at So Sew Easy. Please do not copy, publish, sell, redistribute or alter them in any way. Please don't print and give to your friends, or send it to anyone by email. Please do not rebrand this work as your own and sell or give it away, even if altered. This is intended for your personal use. If you would like to recommend these instructions, please pass on the original download link at So Sew Easy. Thank you for your understanding.

Usage – you ARE allowed to use this pattern to make things to sell on a small handmade basis, such as for craft fairs and for your Etsy shop. However it may not be used for larger scale commercial purposes without a commercial licence.

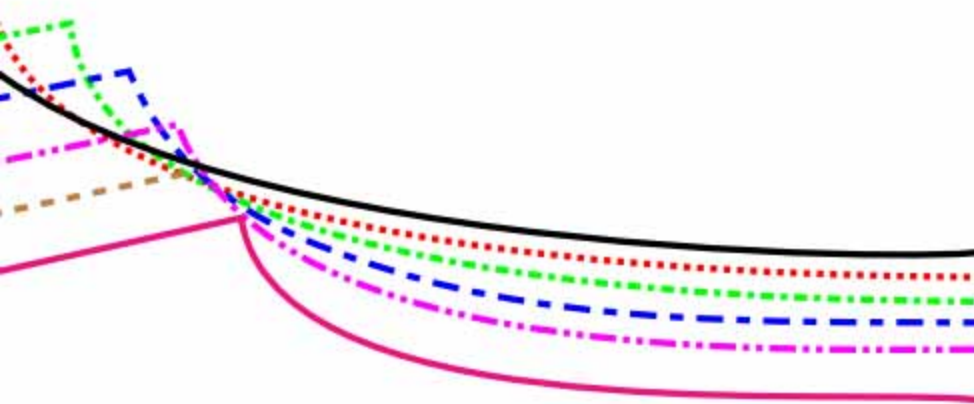


Test
Square
2 inches

1

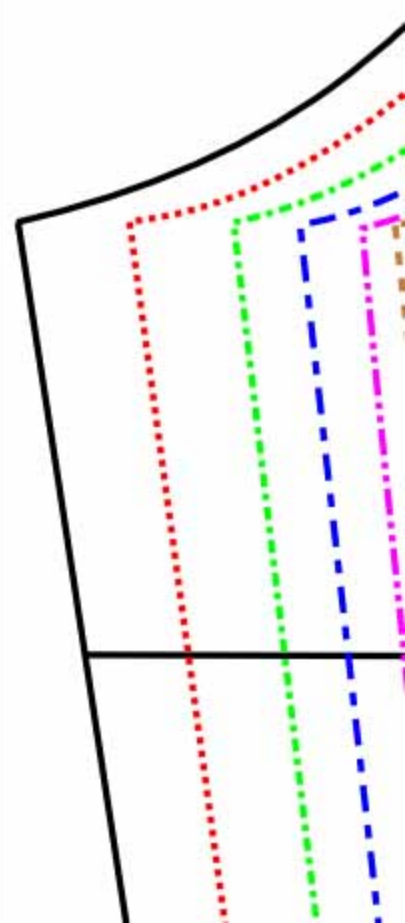


2

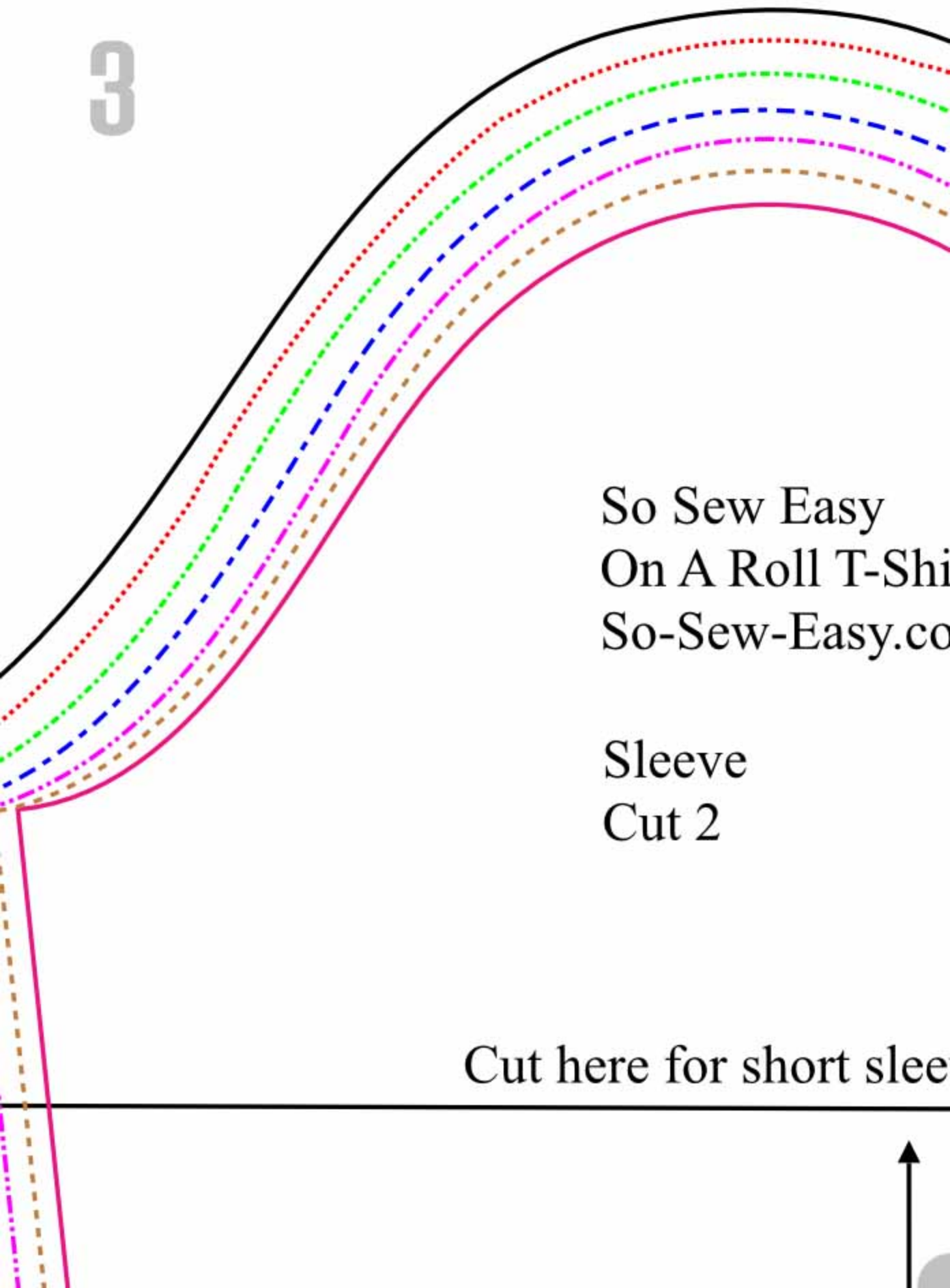


So Sew Easy
On A Roll T-Shirt
So-Sew-Easy.com

Back
Cut 1 on fold



3



So Sew Easy
On A Roll T-Shirt
So-Sew-Easy.com

Sleeve
Cut 2

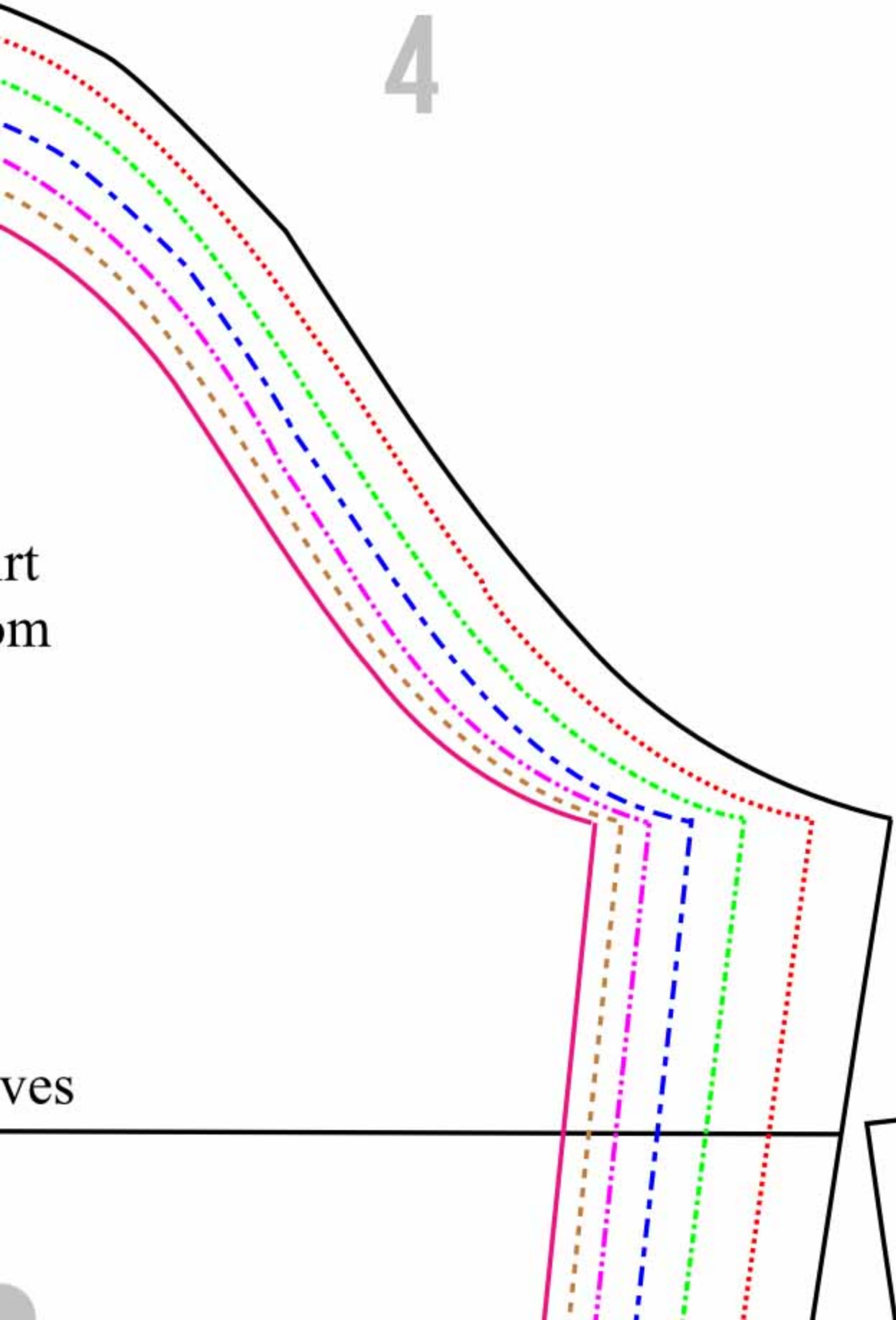
Cut here for short sleeve



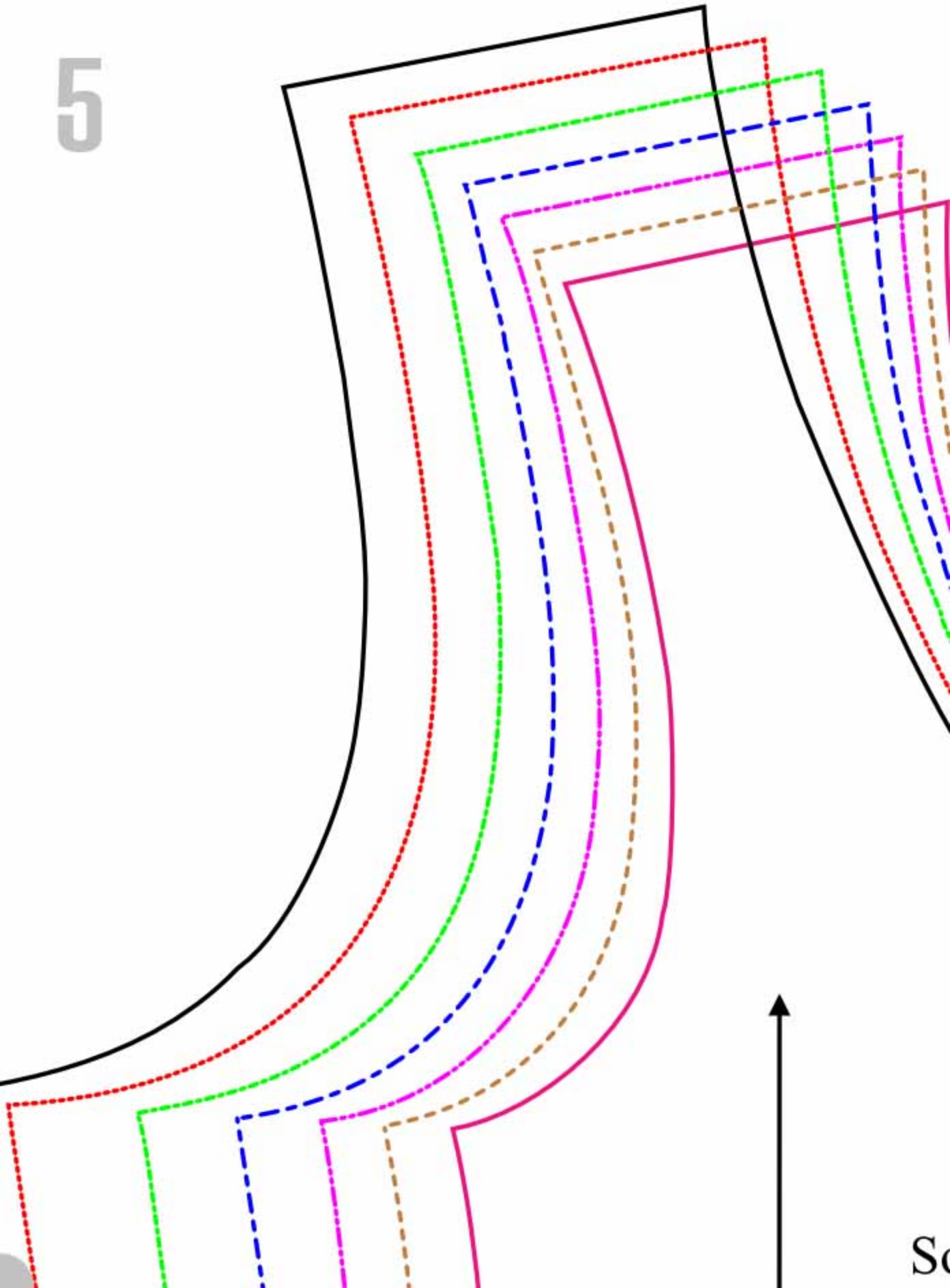
4

rt
om

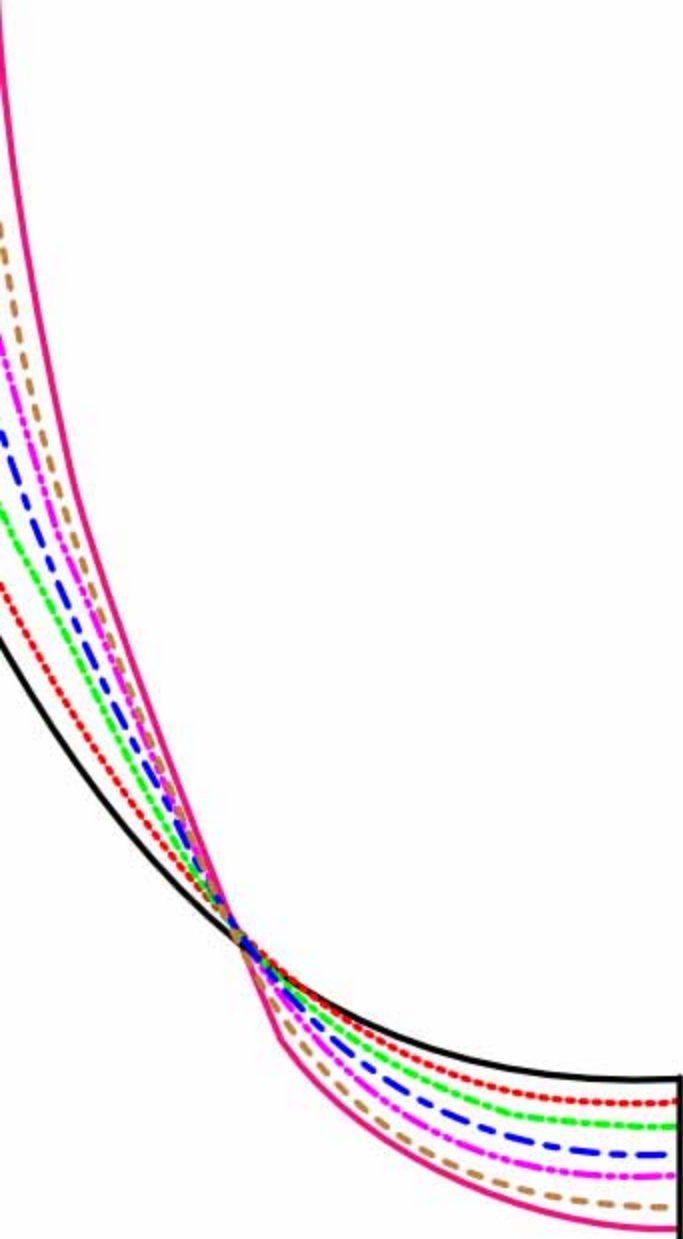
ves



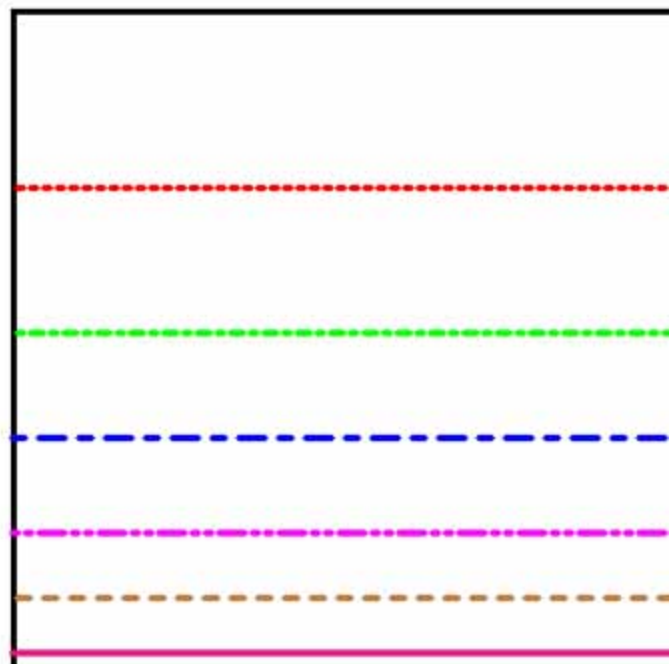
5



Sc

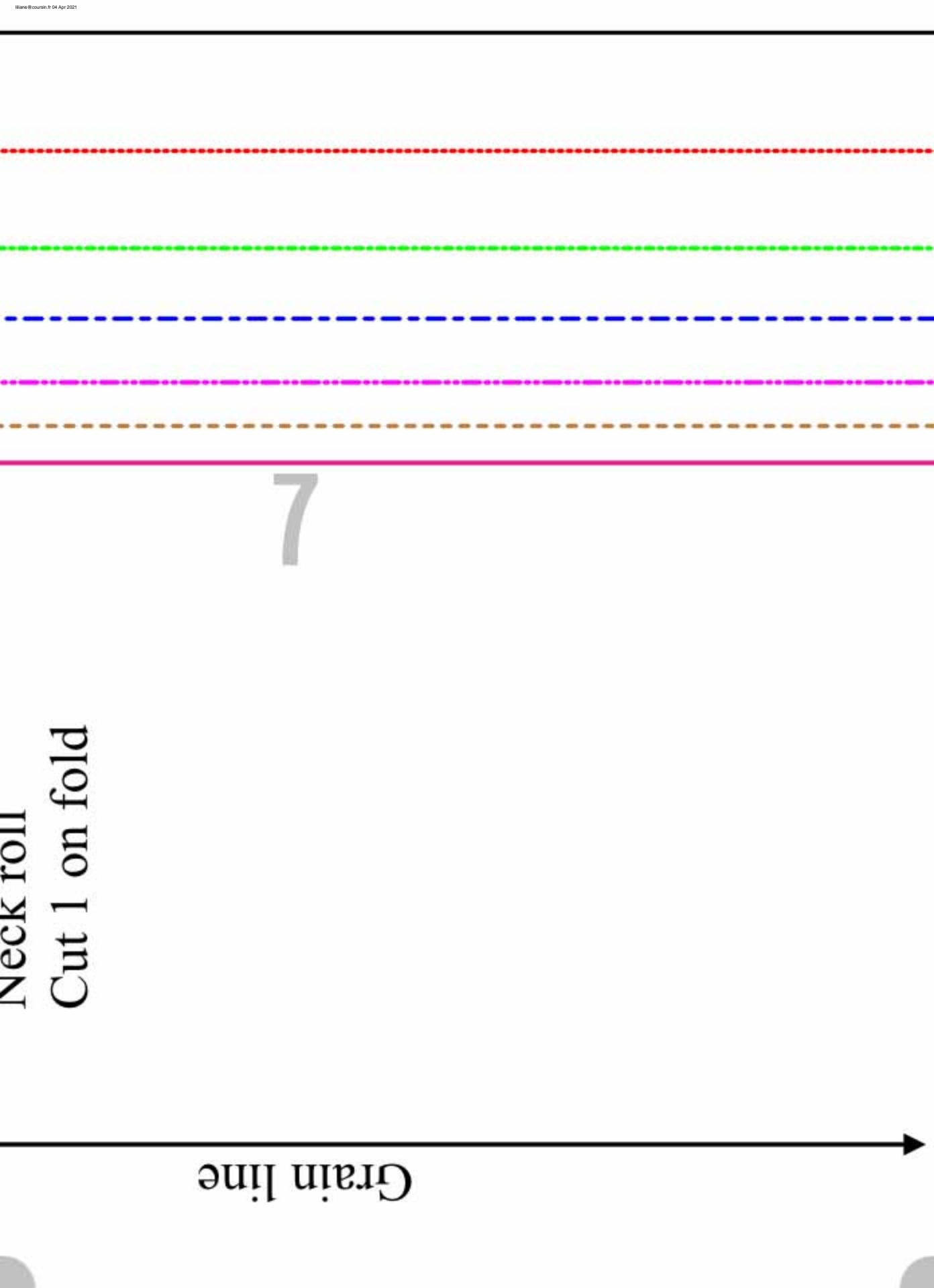


So Sew Easy
On a Roll T-Shirt
So-Sew-Easy.com

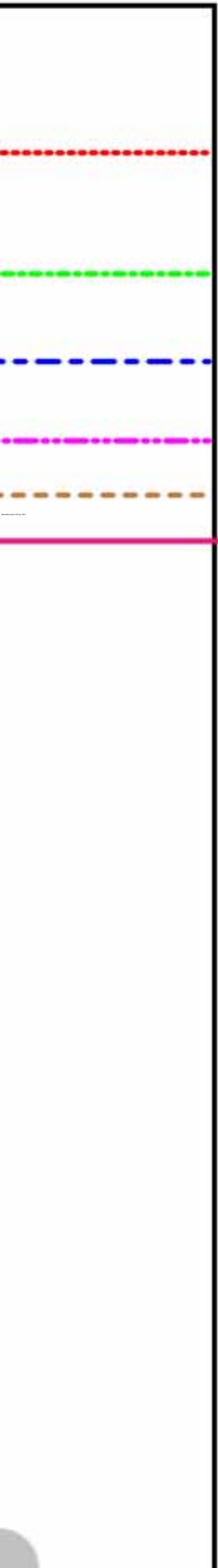


Neck roll
Cut 1 on fold

Grain line

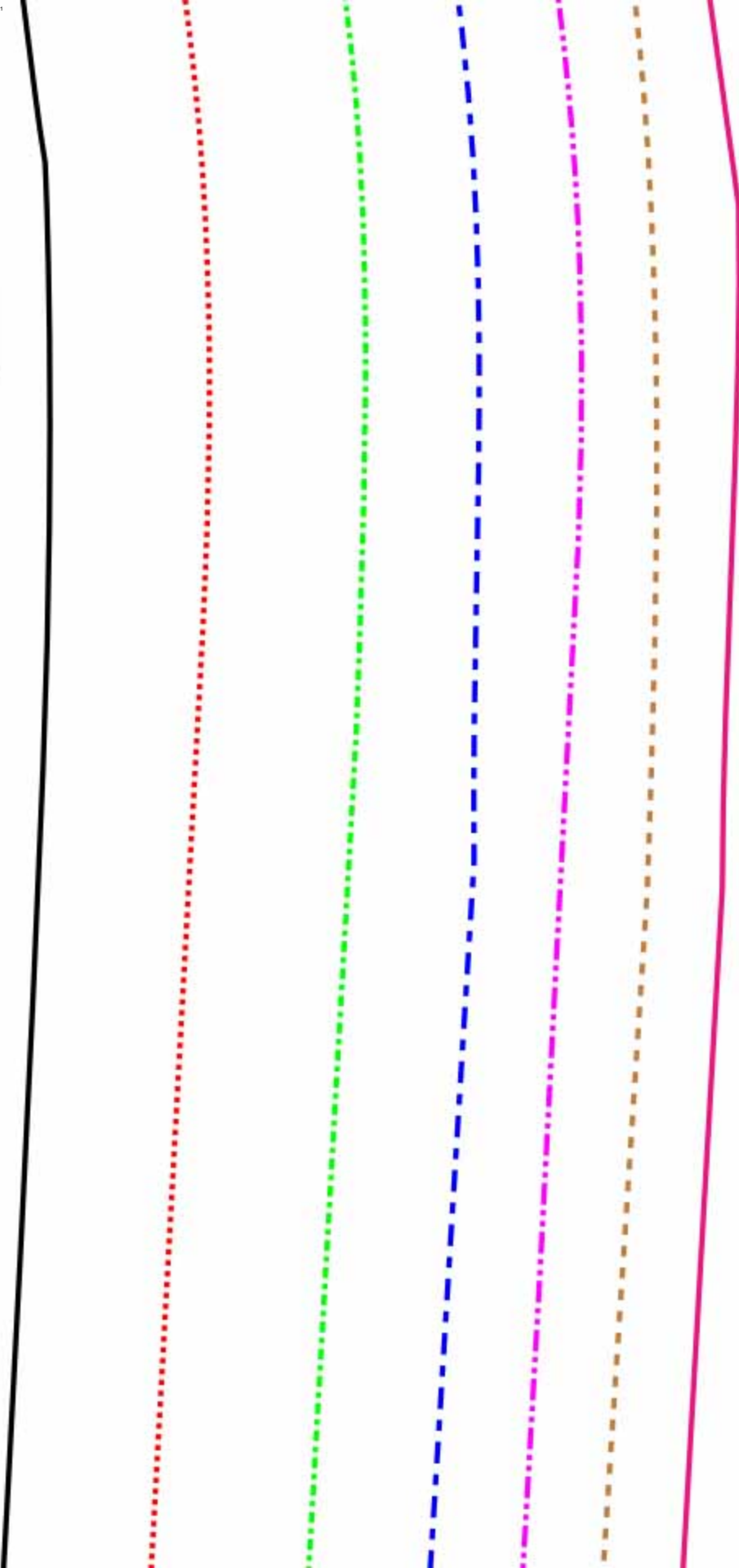


7



8

9

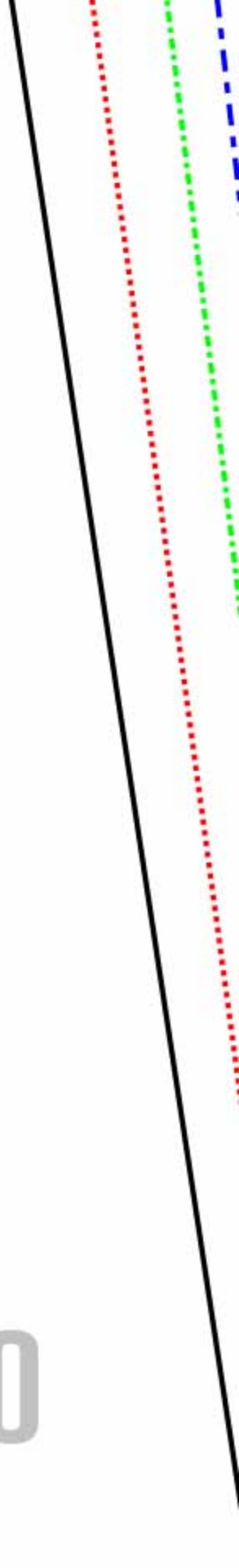


Grain line

Cut on fold

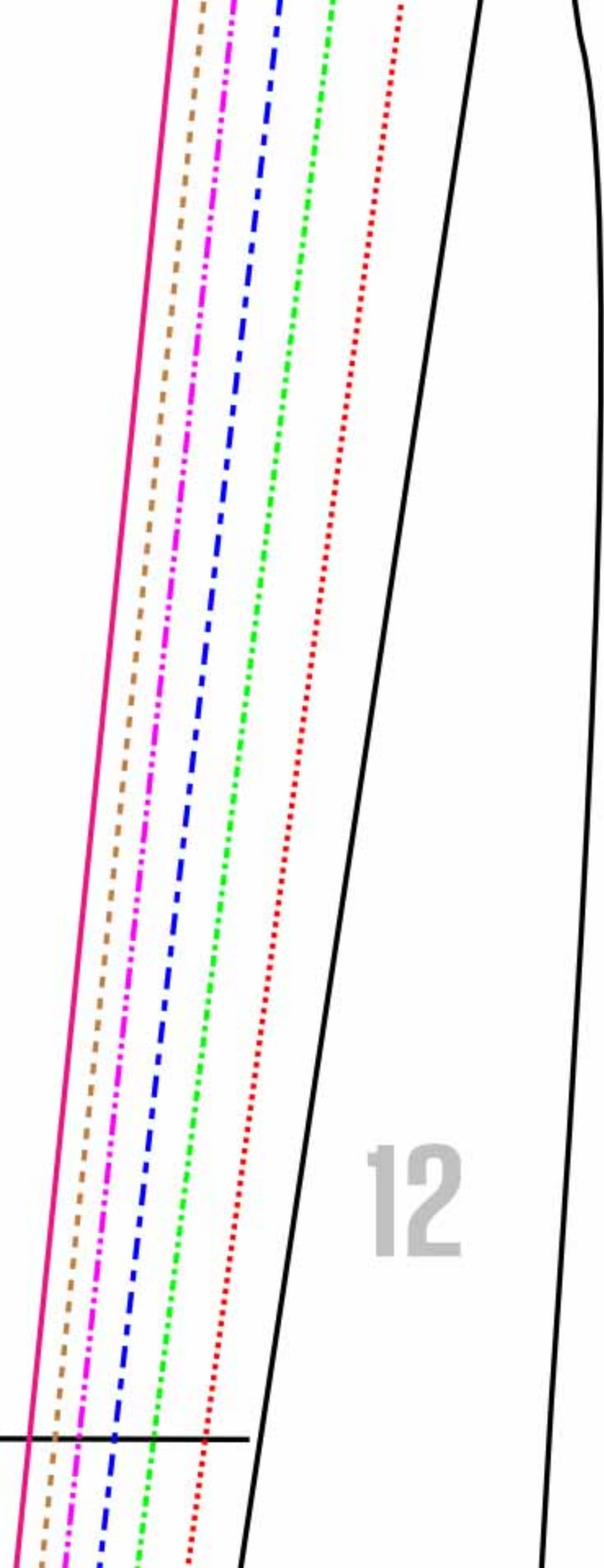
Cut on fold

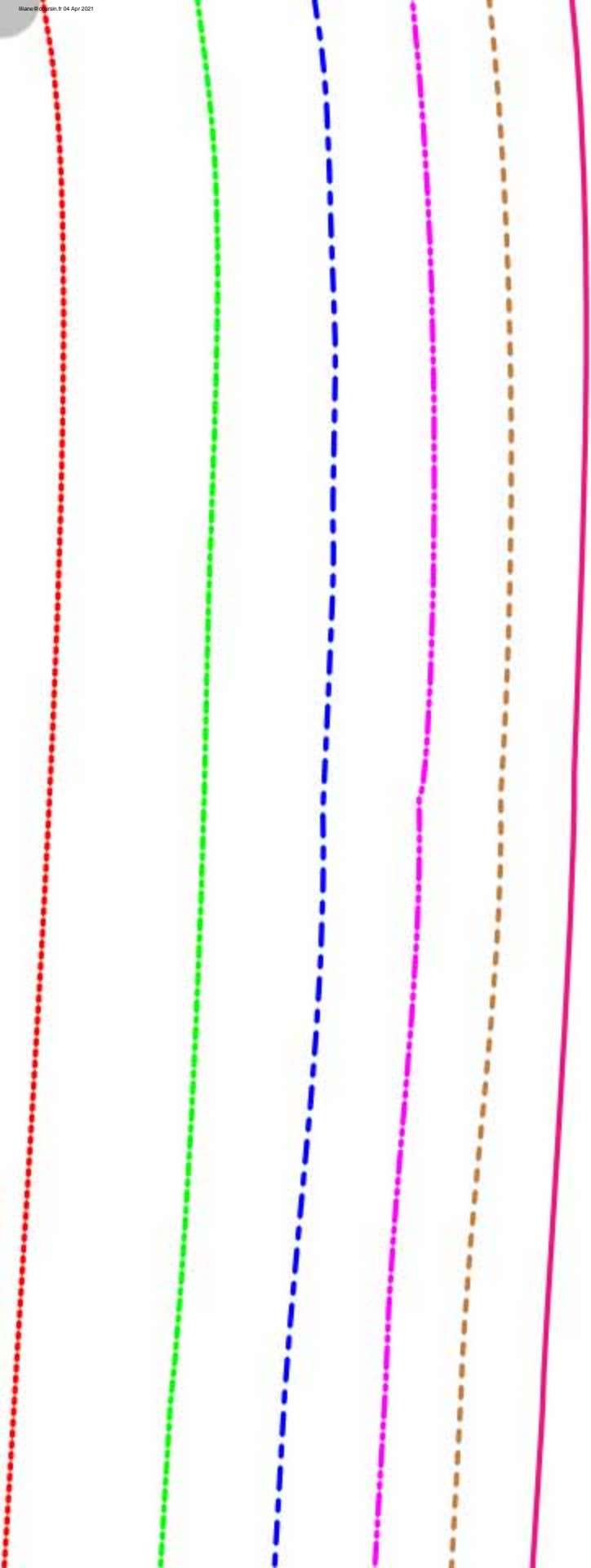
10



sleeves

12





13

Grain line

O
S
E
C

Front
Cut 1 on fold

Center front

14

on fold

So Sew Easy
On a Roll T
So-Sew-Easy

Sizes:

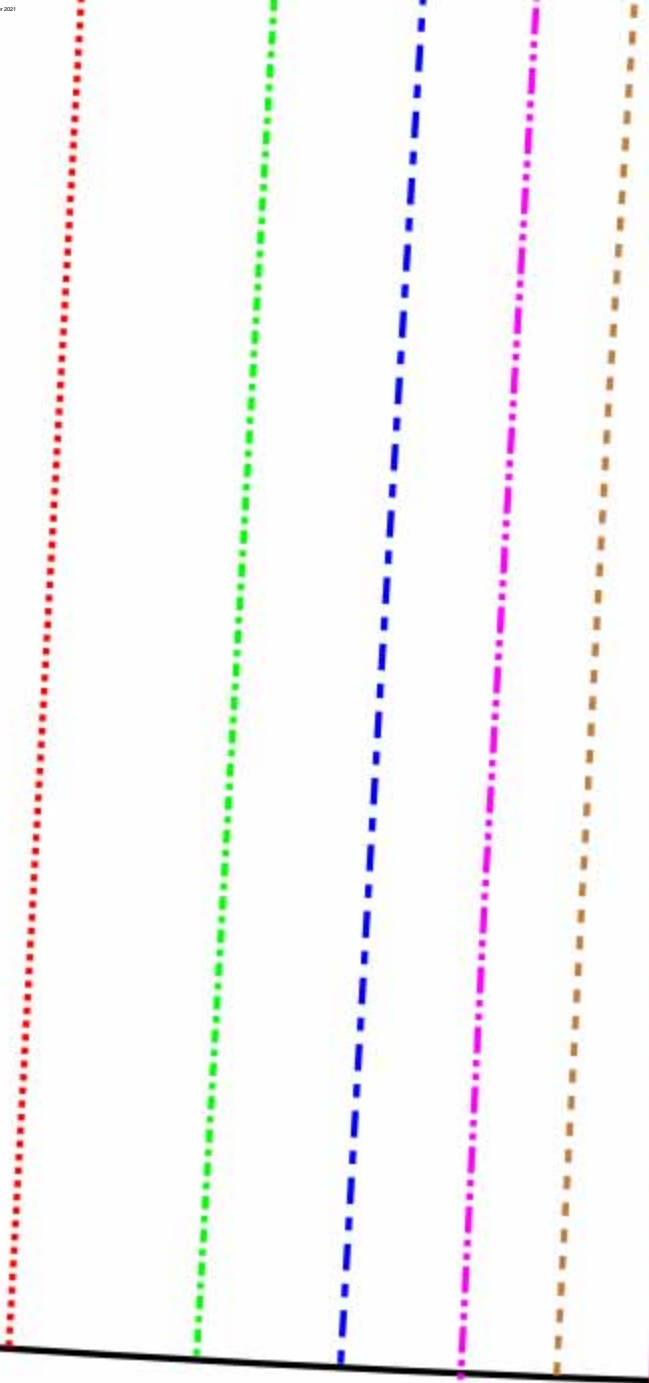
A - _____

Center front - cut on fold

asy
T-Shirt
asy.com

15

16

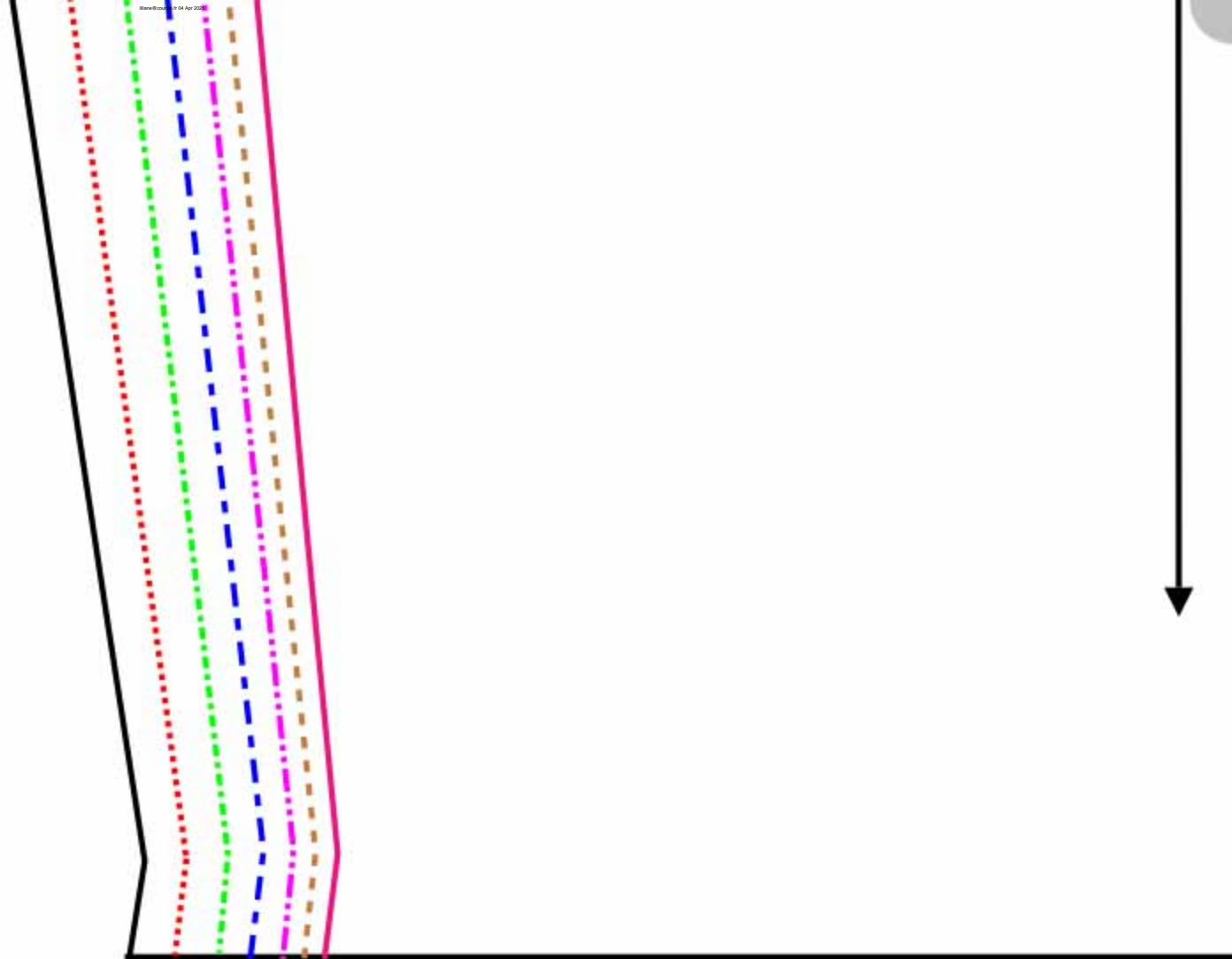


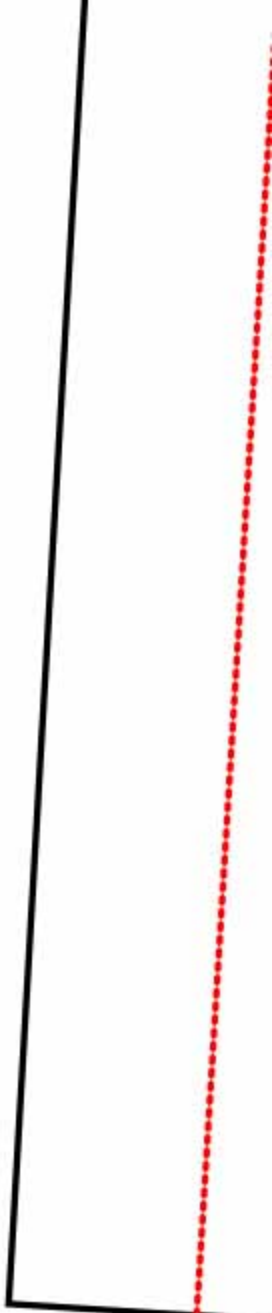
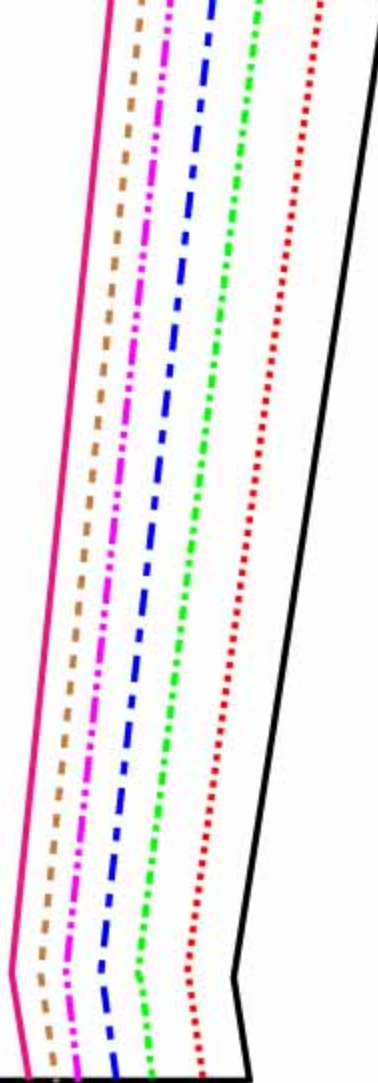
17

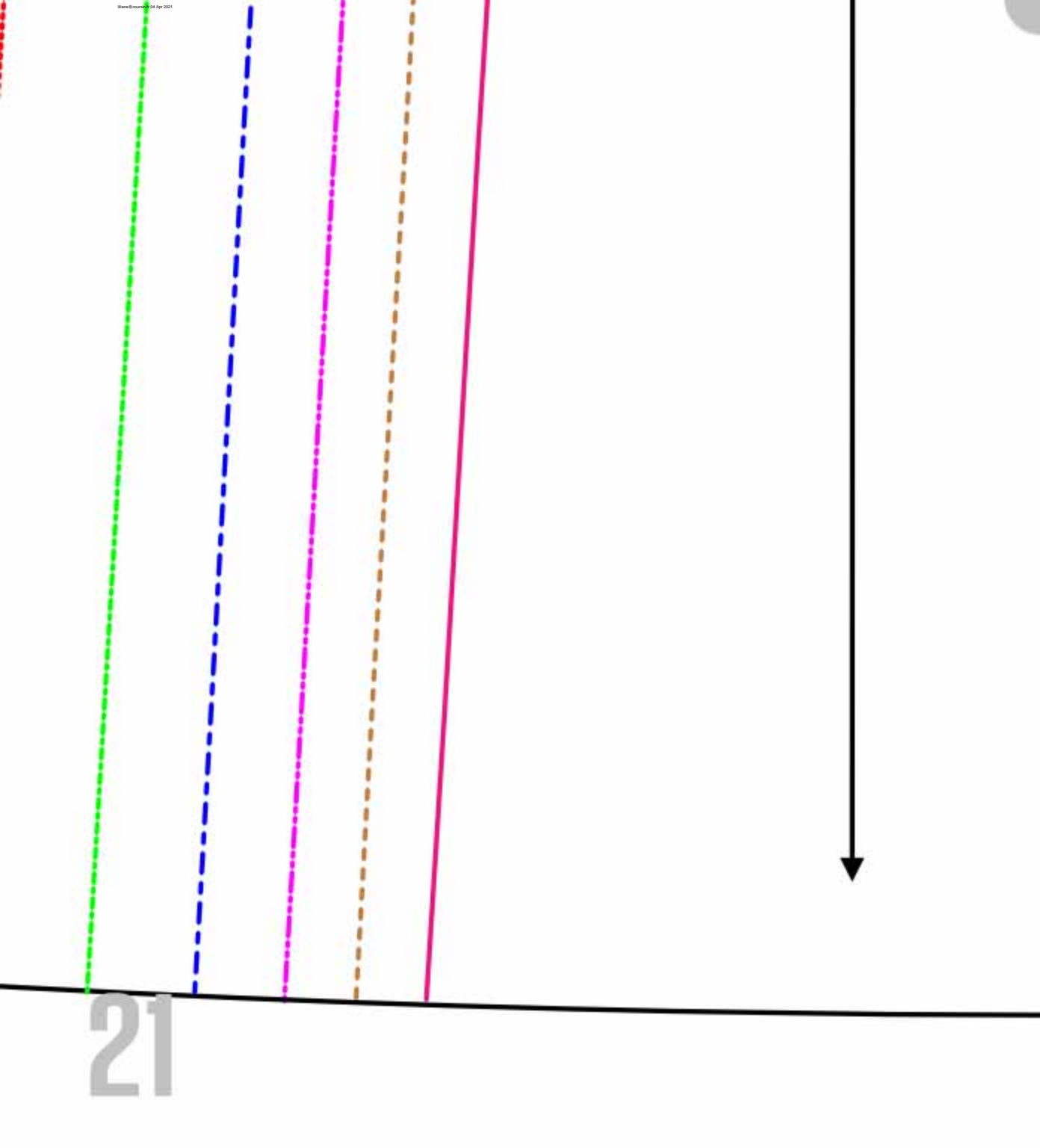


Cut on fold

18







21

Cut o

B -	-----
C -	-----
D -	-----
E -	-----
F -	-----
G -	_____

