

# The Gift of Stitching

2008  
CHRISTMAS  
ORNAMENT  
ISSUE

24  
WONDERFUL  
DESIGNERS

Issue 34 November 2008

[WWW.THEGIFTOFSTITCHING.COM](http://WWW.THEGIFTOFSTITCHING.COM)



# Contents - Issue 34

## November 2008

**Page 2**  
**From the Editor**

**Page 3**  
**Product Profile, Competition and New Products**  
New Gift of Stitching Back Issue CDs.

**Page 4**  
**Advertising Showcase**  
Meet and click on our advertisers.

**Page 6**  
**Your Shopping List and Stockists**  
All the threads and fabric for the projects in this issue listed in one convenient place.

**Page 8**  
**Deruta Christmas Ornament** by Giulia Manfredini of Giulia Punti Antichi

**Page 10**  
**Frosted Pinecones** by Lady Periphaeria of Periphaeria Designs

**Page 11**  
**Trois Petits Lutins** by Marie-Ange Lescarmontier of Lily Poppins

**Page 12**  
**The Red Noel Ornament** by Maryse Dupont of Les grilles de Maryse

**Page 13**  
**Christmas Distelfink** by Judith Tuttle of Twisted Oaks Designs

**Page 14**  
**Treasure Christmas Pincushion** by Maria Teresa Vitali of MTV Designs

**Page 16**  
**Feature Pattern**  
**The Fold-Up** by Judy Odell of Just A Thought. Includes **Nutcracker Santa** by Judy Odell and **Christmas Ornament of Friendship** by Giulia Manfredini of Giulia Punti Antichi

**Page 25**  
**Christmas Hearts** by Lody Steward of Timber Creek Needleworks

**Page 27**  
**Christmas Poinsettia Topiary** by Pam Lewis & Susan Rohm of Praiseworthy Stitches

**Page 29**  
**Boule De Sapin** by Patrizia Martellini of The Cute Mermaid Designs

**Page 30**  
**A Merry Christmas** by Barbara Westhoven of West Wind Cross Stitch Designs

**Page 31**  
**Gianluca's Stocking** by Sofia Cornali of Giulia Punti Antichi

**Page 33**  
**Peppermint Paul** by Helga Mandl Designs

**Page 34**  
**X-Moose Ornament** by Meg Thompson Shinall of the Flower Thread Company

**Page 35**  
**Christmas Tree In Blue** by Cathie Richardson of Country Garden Stitchery

**Page 36**  
**Noel 2008** by Marie-Chantal Lord of Macha Creations

**Page 37**  
**Dolphin Dance** by Lorrie Ramsay of Pine Glen Designs

**Page 38**  
**Cubic Christmas Ornament** by Virginie Lykins

**Page 40**  
**Little Christmas Lamp** by Wal D'Champs of WDC Designs

**Page 42**  
**Gingerbread House Ornament** by Olive Dyck of Olive Hope Design

**Page 43**  
**Black Velvet Ornament** by Lynne Herzberg

**Page 44**  
**Prairie Schooler Santa** by The Prairie Schooler

**Page 47**  
**Peace On Earth Banner** by Robin Laukhuf of Olde Willow Stitchery

**Page 45**  
**Vintage Christmas Ornament** by Thea Dueck of The Victoria Sampler

**Page 50**  
**Stitch Diagrams**



# From The Editor

## *This month's issue...*

What a busy month this has been! Despite the busyness, I still have a love and a passion for cross stitch. There is something very satisfying about creating something with your own two hands, and for that reason I enjoy my craft.

This month is particularly one of my favourite months, because it is our Christmas ornament issue. This issue is chock full of Christmas ornaments and

I know many stitchers just can't get enough of them! This will be a wonderful issue to keep and pull out during the year when you wonder which ornament you want to stitch next. For those that aren't so keen on Christmas ornaments there are plenty of ornaments in here that can be used for any occasion. We have designers from all over world; some you'll recognise (and may even be a favourite) and some will be new. Countries of origin include the US, Italy, France, Brazil, Norway, Canada, England, Finland... did I miss someone? This issue has a wonderful collection of talent.

When I was thinking about who to ask for this issue's feature pattern, I ask my friend, Judy Odell to invent a new way of finishing a Christmas ornament. Well, Judy put on her thinking cap and she has invented the new Fold-up. This idea is so versatile. It can stand, it can hang and is reversible!

Enjoy this month's issue and if you complete something, please send in a photo so we can all enjoy your work.

Have a wonderful month.

Lots of Love,  
Kirsten Edwards  
Editor



## *Little Discoveries...*

Remember how we had an article on horn books last month? Patrizia Martellini who wrote the article expressed her wish to find a mould for a gingerbread horn book. Well, they exist! Stasi Buhrman sent me a link for a cookie mould company called House on the Hill, Inc.

[http://www.houseonthehill.net/index.php?main\\_page=index&cPath=1\\_28](http://www.houseonthehill.net/index.php?main_page=index&cPath=1_28)

They have a beautiful range of cookie moulds based on antique moulds and pictures. I particularly like the angel horn book. So now, if you've always wanted to, you can make a gingerbread horn book.

We had two entries for last month's "Design a Horn Book" competition. Congratulations to Melissa Ladner from Canada (top picture) and Jenni Davill from Australia (bottom picture). Both are wonderful, well thought out designs, so we will split the prizes between you. We hope you enjoy your horn book and gift vouchers from Bloom Woodworks.



There is a teddy bear shop near my home which I sometimes visit. There I discovered a few tools which I think cross stitchers could really benefit from.

Finishing a cross stitch piece into a small object, like a pincushion can get fiddly. The tool called a scissor clamp (also known as forceps or haemostats) has a blunt end for holding something and a locking device to keep the handles clamped. I have been using this tool to clamp openings closed after stuffing and it's wonderful! It's like a third hand! It keeps the two pieces of fabric together and because it locks, I can just let it dangle and then my two hands are free to sew. The other tool is a miniature stuffing fork. This is great for pushing the stuffing in and getting it into the corners. After using these two tools I don't think I can live without them now! The teddy bear shop owner also showed me her range of stuffings from wool roving to synthetic. I've run out of room now so I'll talk about that another time. These tools are commonly sold in craft stores.



# Product Profile

## The Gift of 2006 and 2007 Stitching Back Issue CDs

The Gift of Stitching is excited to announce the release of two new products!!

In October we introduced 2006 & 2007 back issue bundles on CD! The CDs come in an attractive A5 covered sleeve that can be stored conveniently for future reference. Each CD contains all of the issues for each respective year, which can be opened on your computer (PC or Mac) and printed in the same manner as the online product.

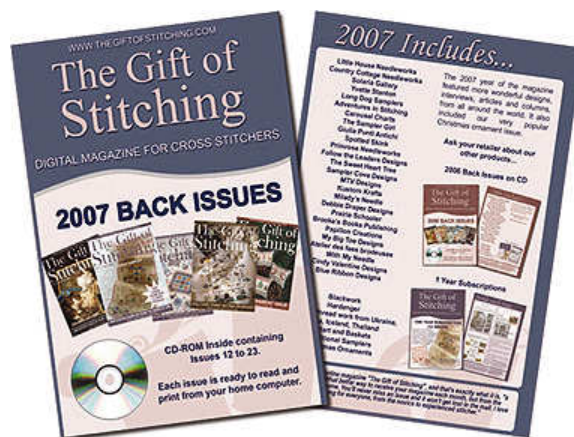
The CDs are available from a variety of retailers and distributors worldwide. If you would like more information about these products please enquire at your local needlework store, or email [sales@thegiftofstitching.com](mailto:sales@thegiftofstitching.com) stating which area of the world you live in.

### NOVEMBER 2008 COMPETITION

This month we are giving away five subscription and back issue CD packs. The pack will contain a one year subscription, the 2006 Back Issue CD and the 2007 Back Issue CD. To enter...



[www.thegiftofstitching.com/competition.php](http://www.thegiftofstitching.com/competition.php)



## New Product

Maria Teresa Vitali of MTV Designs has released a new Christmas design called, "Christmas Time 2008". It is a lovely set composed of a sewing box, biscornu, scissor case, and a scissor fob.

The chart comes as a full colour folded A4 (letter) pack with charts, materials, stitching and finishing instructions (with diagrams). The design calls for linen and an assortment of hand dyed threads. Stitches include: cross stitch, Rhodes Diamond stitch, Backstitch, Four-sided stitch, Poinsettia stitch, Straight stitch and Algerian Eyelets.

The chart also comes with three Swarovski Crystals and a Snowman button from Butterflycouture.

Go to MTV Designs website to find out more about the design and where you can purchase it. You can also download the FREE Pattern for project..



[www.mtvdesigns.com](http://www.mtvdesigns.com)



# Advertising Showcase



All adverts are clickable. Click an advert and go straight to the advertiser's website.

## ✦ Violarium ✦

- \* French designs and magazines
- \* Friendly customer service
- \* Fast shipping worldwide, shipping costs always 3 euros



[www.violarium.com](http://www.violarium.com)

[www.Yiotas-XStitch.com](http://www.Yiotas-XStitch.com)



Shore of turquoise sea  
Kit: \$47.46, Pattern: \$24.21



Sea waves  
Kit: \$53.27



Greek church in Santorini  
Kit: \$47.46, Pattern: \$28.09



Snowed tiger  
Kit: \$53.27, Pattern: \$29.04



Roses hat lady  
Kit: \$47.46



Winter sleigh ride  
Kit: \$47.46, Pattern: \$23.25

## Hearthside Craftworks

### NEW Mark 2 Floor Stand

36" Crossbar fits most wheelchairs, recliners and chairs. Crossbars available in other sizes.

**Hearthside Craftworks**  
P.O. Box 55012, RPO TEMPLE  
Calgary, AB T1Y 6R6 Canada  
\*mailing address only, please call for appointments

Please call or email for more information. Ask about other 'In Stock' stitching products.

Toll Free 1-866-285-9423  
[www.hearthsidecraftworks.com](http://www.hearthsidecraftworks.com)  
[crafters@hearthsidecraftworks.com](mailto:crafters@hearthsidecraftworks.com)

MADE IN CANADA

All Hearthside Stands feature 'Spring-Loaded Hinge Points'™, are crafted from the highest grade of solid Red Oak, and Hand-Finished in Golden Oak Stain and Varathane.™



Olive  
Hope  
Design



[www.olivehopedesign.com](http://www.olivehopedesign.com)



## Easy-Count Guideline R&S Designs, INC.

The only product to keep your place on the fabric!

A tool to reduce your stitching time by one-third, by gridding your fabric with a removable nylon guide.

For examples, more information and a demonstration, come to our website:  
[www.rseasycount.com](http://www.rseasycount.com)  
[rsdesignsinc@comcast.net](mailto:rsdesignsinc@comcast.net)



Tutto Ricamo e alcune Scuole Italiane presentano

### Un Natale da Ricamare

Il Ricamo Classico per il Natale 2008

[www.manidonna.it](http://www.manidonna.it)

Italian and American cross-stitch Designers for Christmas 2008

### Un Natale da Ricamare

[www.manidonna.it](http://www.manidonna.it) [info@manidonna.it](mailto:info@manidonna.it)

19 exclusive designs from Giulia Panti Amici, Mani di donna, Miriam Storch, MTV Design, Per Segno Per Filo. Wonderful international designs: Dames of The Needle, Fingerwork, Just a Thought, Olde Willow Stitches Threads, The Thread Gatherer, With My Needle.

## Mani di Donna

[www.manidonna.it](http://www.manidonna.it) [info@manidonna.it](mailto:info@manidonna.it)  
Via Gaspare Gozzi 131, Rome (Italy).



# Advertising Showcase



All adverts are clickable. Click an advert and go straight to the advertiser's website.

## FibersandThreads.com

Come see our online store which offers over 1000 fibers and threads for all types of embroidery including cross stitch. We love to research and provide hard-to-find threads from all over the world. Some of our brands include Crescent Colours, Divine Threads, DMC, The Gentle Art, Kreinik, Needlepoint Silks, Northern Lights, Rainbow Gallery, River Silks, Silk and Ivory, The Thread Gatherer, Weeks Dye Works, Olde Willow Stitchery...

FREE SHIPPING WORLDWIDE FOR ORDERS OVER \$25

[www.fibersandthreads.com](http://www.fibersandthreads.com)

## Always in Stitches™

Visit our beautiful, new store in Palm Beach, FL or shop online.

We offer a wonderful selection of fibers, fabrics & other fine cross stitch supplies.

3828 Northlake Blvd.  
Palm Beach Gardens, FL 33403  
561-804-7800  
Toll Free 1-888-6-Needle  
email@alwaysinstitches.com  
www.alwaysinstitches.com



Publishers of the  
Hannah Horsfall sampler.

## Down Sunshine Lane

[www.downsunshinelane.com](http://www.downsunshinelane.com)

*The online source for all your stitching needs!*

*Large in-stock inventory & fast shipping.*

*Monthly Clubs & Birthday Discounts available.*

[www.downsunshinelane.com](http://www.downsunshinelane.com)

## Colours Down Under

For all your counted cross stitch needs



shop@coloursdownunder.com.au  
www.coloursdownunder.com.au



Hot new designs,  
Latest cross stitch trends,  
Fresh designer talent!

IMMEDIATE DOWNLOAD  
NO SHIPPING FEES

Check out our website:

[www.creativepoppy.com](http://www.creativepoppy.com)



Hey! What are  
you looking at?!

**Your Advert!**

Place you advert here and get clicks  
from readers straight to your  
website! Great prices!  
Don't delay, space is limited.  
[sales@thegiftofstitching.com](mailto:sales@thegiftofstitching.com)

# *Your Shopping List*

## *Issue 34 November 2008*

### **DMC conversions are in brackets**

#### **Christmas Tree in Blue**

##### **Page 35**

- \_\_\_ W Stormy Gray
- \_\_\_ DMC 4240
- \_\_\_ KB 49294 Periwinkle
- \_\_\_ MHGSB 02006 Ice Blue

#### **Peppermint Paul**

##### **Page 33**

- \_\_\_ W Stormy Gray
- \_\_\_ DMC 310
- \_\_\_ DMC 321
- \_\_\_ DMC 740
- \_\_\_ DMC 829
- \_\_\_ DMC 943
- \_\_\_ DMC 963
- \_\_\_ DMC 4050
- \_\_\_ DMC 4070
- \_\_\_ DMC 4160
- \_\_\_ DMC 4200
- \_\_\_ MHGSB 40479 White
- \_\_\_ MHGSB 42013 Red

#### **Nutcracker Santa**

##### **Page 19**

- \_\_\_ Z Vintage Country Mocha
- \_\_\_ DMC 304
- \_\_\_ DMC Ecru
- \_\_\_ DMC 825
- \_\_\_ DMC 310
- \_\_\_ DMC E5282
- \_\_\_ DMC White
- \_\_\_ DMC Pearl #8 Ecru
- \_\_\_ RG Whisper, White

#### **Christmas Ornament of Friendship**

##### **Page 22**

- \_\_\_ Z Belfast Linen, Cream
- \_\_\_ GLS Poinsettia 035 (221)
- \_\_\_ GLS Pecan 133 (3863)
- \_\_\_ GLS Holiday Green 016 (3051)
- \_\_\_ GLS Slate Blue 124 (931)
- \_\_\_ GLS Lacquered Gold 045 (680)
- \_\_\_ GLS Olive Grove 116 (730)

#### **Cubic Christmas Ornament**

##### **Page 38**

- \_\_\_ 14 count Aida, White
- \_\_\_ DMC 310
- \_\_\_ DMC 349
- \_\_\_ DMC 986
- \_\_\_ DMC 743
- \_\_\_ DMC 869
- \_\_\_ DMC White
- \_\_\_ MHGSB #00557

#### **Little Christmas Lamp**

##### **Page 40**

- \_\_\_ 18 count Aida, White
- \_\_\_ DMC 321
- \_\_\_ DMC 3705
- \_\_\_ DMC 699
- \_\_\_ DMC 907
- \_\_\_ DMC 304

#### **Vintage Christmas Ornament**

##### **Page 45**

- \_\_\_ Z Mocha Linen
- \_\_\_ TB TRA831
- \_\_\_ KB #4 021
- \_\_\_ DMC 644
- \_\_\_ AVAS 3444
- \_\_\_ SJDPB #14 1866H
- \_\_\_ SJDGB #11 59
- \_\_\_ Silver snowflake charm

##### **OR**

- \_\_\_ Z Platinum Linen
- \_\_\_ TB TRA125
- \_\_\_ KSB 8000
- \_\_\_ KB #4 002
- \_\_\_ DMC 822
- \_\_\_ SJDPB #14 1805H
- \_\_\_ SJDGB 2mm white pearls
- \_\_\_ SJD 2mm gold pearl

#### **Frosted Pincones**

##### **Page 10**

- \_\_\_ W Wild Raspberry
- \_\_\_ DMC 221
- \_\_\_ DMC 224

#### **Gianluca's Stocking**

##### **Page 31**

- \_\_\_ TTT T06-01
- \_\_\_ TGSNC Stiletto Sidewalk (4210)
- \_\_\_ SSSC Midnight Magic (4240)
- \_\_\_ SSST Into the Blue (4020/162)
- \_\_\_ KB #8 018

#### **Deruta Christmas Ornament**

##### **Page 8**

- \_\_\_ SS linen, Peacock Fantasy
- \_\_\_ TGSNC 1036 Monsoon Sky
- \_\_\_ SSSC Firecracker
- \_\_\_ SSST Firecracker
- \_\_\_ SSSC Ocean Waves
- \_\_\_ SSST Ocean Waves
- \_\_\_ M Gold 3 3008

#### **Black Velvet Ornament**

##### **Page 43**

- \_\_\_ Evenweave, White
- \_\_\_ DMC 310

#### **A Merry Christmas**

##### **Page 30**

- \_\_\_ W Lambwool linen
- \_\_\_ DMC 319
- \_\_\_ DMC 320
- \_\_\_ DMC 498
- \_\_\_ DMC 761
- \_\_\_ DMC 814
- \_\_\_ DMC 950
- \_\_\_ DMC 3371
- \_\_\_ DMC 3852
- \_\_\_ DMC Ecru

#### **Trois Petits Luntins**

##### **Page 11**

- \_\_\_ Z linen, Dirty
- \_\_\_ DMC 349
- \_\_\_ DMC 799
- \_\_\_ DMC 823
- \_\_\_ DMC 907
- \_\_\_ DMC 938
- \_\_\_ DMC 948
- \_\_\_ DMC 3371
- \_\_\_ DMC 3688
- \_\_\_ DMC 3689
- \_\_\_ DMC 3820
- \_\_\_ DMC 3822
- \_\_\_ DMC 3839
- \_\_\_ DMC 3857
- \_\_\_ DMC B5200
- \_\_\_ WDW Blue Spruce (DMC 905)
- \_\_\_ MHPB 42011 Victorian Gold
- \_\_\_ MHPB 42013 Red
- \_\_\_ DMC E415
- \_\_\_ DMC E3821

#### **Christmas Destilfink**

##### **Page 13**

- \_\_\_ W White Jobelan
- \_\_\_ DMC 310
- \_\_\_ DMC 444
- \_\_\_ DMC 3347
- \_\_\_ DMC 824
- \_\_\_ DMC 817

#### **Christmas Hearts**

##### **Page 25**

- \_\_\_ CC Linen, Salt Carolina (bright)
- \_\_\_ DMC 505
- \_\_\_ DMC 777
- \_\_\_ DMC 783
- \_\_\_ DMC Ecru
- \_\_\_ DMC E3852



# Your Shopping List Continued

— MHASB 00479 White  
4mm white pearl glass bead

OR

— CC Tea Irish Linen (pastel)  
— DMC 958  
— DMC 899  
— DMC 676  
— DMC Ecru  
— DMC E3821  
— MHBSB 00479 White  
— 4mm crystal pink glass bead

## The Red Noel Ornament Page 12

— Belfast Linen, Flax  
— DMC 221

## Peace On Earth Banner Page

— SS Hunter Shiraz  
— OWS 20  
— OWS 21  
— OWS 15  
— OWS 30  
— OWS 12  
— MHPB G40123

## Prairie Schooler Santa Page 44

— Jobelan, Sage  
— DMC White  
— DMC 356  
— DMC 758  
— DMC 815  
— DMC 895  
— DMC 3371

## Noel 2008 Page 36

— Monaco, White  
— WDW Baby's Breathe  
— WDW Rose Quartz  
— GAST Sea Spray  
— GAST Cornflower  
— GAST Raspberry Parfait  
— GAST Lavender Potpourri

## Christmas Poinsettia Topiary Page 27

— LL, Navy Bean  
— GAST Dried Thyme  
— GAST Holly Berry  
— GAST Avocado  
— MHGSB 00557

## Boule De Sapin Page 29

— DMC Aida Iridescent #3823

## X-Moose Ornament Page 34

— Dublin Linen, White  
— A Pearl Cotton 8 #1206  
— DMC 5269  
— MHASB 03049  
— GTFT 427

## Treasure Christmas Pincushion Page 14

— LL, Light Exemplar  
— VC Imperial Green (3346)  
— VC Gandy Tango (321)  
— VC Old Maid of the Forest (934)  
— MHBP 40557

## Dolphin Dance Page 37

— W Jobelan White  
— DMC 322  
— DMC 803  
— DMC 939  
— KB #8 018HL  
— MHGSB 00374  
— MHGSB 00479

OR

— W Jobelan Navy  
— DMC 3325  
— DMC 775  
— DMC B5200  
— DMC E5200  
— MHGSB 00374  
— MHGSB 00479

## Gingerbread House Page 42

— SW Blueberry Delight Lugana  
— DMC 208  
— DMC 435  
— DMC 703  
— DMC 826  
— DMC 987  
— DMC 3865  
— DMC 321  
— DMC 444  
— DMC 801  
— DMC 970  
— DMC 989

## Definitions and Stockists All website links are clickable.

A: Anchor  
[www.coatsandclark.com](http://www.coatsandclark.com)

Access Commodities Distributors  
AVAS: Au ver a Soie stranded silk  
TB: Trebizond  
[www.accesscommodities.com](http://www.accesscommodities.com)

CC: Charles Craft  
[www.charlescraft.com](http://www.charlescraft.com)

DMC: DMC six stranded cotton  
[www.dmc-usa.com](http://www.dmc-usa.com)

GAST: Gentle Art Sampler Thread  
[www.thegentleart.com](http://www.thegentleart.com)

GTFT: Ginnie Thompson Flower Thread  
[www.flowerthread.com](http://www.flowerthread.com)

GLS: Gloriana Sampler Luminescence  
Silk threads  
[www.glorianathreads.com](http://www.glorianathreads.com)

KB: Kreinik braid  
KSB: Kreinik Silk Bella  
[www.kreinik.com](http://www.kreinik.com)

MHGS: Mill Hill Glass Seed Beads  
MHPB: Mill Hill Petite Beads  
MHASB: Mill Hill Antique Seed Beads  
[www.millhill.com](http://www.millhill.com)

M: Madeira Threads  
US: [www.madeirausa.com](http://www.madeirausa.com)

OWS: Olde Willow Stitchery Threads, Inc  
[www.oldewillowstitchery.com](http://www.oldewillowstitchery.com)

RG: Rainbow Gallery  
[www.rainbowgallery.com](http://www.rainbowgallery.com)

SJDPB/GB: SJ Designs Petite Beads/  
Glass Beads  
[www.sj-designs.net](http://www.sj-designs.net)

SS: Stitches and Spice hand dyed fabric  
SSSC: Stitches and Spice stranded cotton  
SSST: Stitches and Spice sampler thread  
[www.stitchesandspice.com.au](http://www.stitchesandspice.com.au)

SW: Silkweavers  
[www.silkweaver.com](http://www.silkweaver.com)

TGSNC: The Thread Gatherer Silk N  
Colors  
[www.threadgatherer.com](http://www.threadgatherer.com)

TTT: Tokens & Trifles Redefined, Inc  
[www.tokensandtrifles.com](http://www.tokensandtrifles.com)

VC: Hand Dyed Fibres by Vikki Clayton  
[www.hand-dyedfibers.com/oscnuke/](http://www.hand-dyedfibers.com/oscnuke/)

WDW: Weeks Dye Works  
[www.weeksdyeworks.com](http://www.weeksdyeworks.com)

W: Wichelt Imports  
[www.wichelt.com](http://www.wichelt.com)

Z: Zweigart  
[www.zweigart.com](http://www.zweigart.com)



# Deruta Christmas Ornament

## by Giulia Manfredini

### of Giulia Punti Antichi

The beautiful colours in a bead from Deruta, Italy is the inspiration for this ornament by Giulia Manfredini. A kit is available from Mani Di Donna ([www.manididonna.it](http://www.manididonna.it)) and the bead can be purchased from Giulia directly.

**Total design size:** 53 x 53 stitches

#### Finished Stitched Area

14/28 count: 4 1/2" (11.5 cm) square  
16/32 count: 4" (10 cm) square  
18/36 count: 3 1/2" (9 cm) square  
Allow an extra 2" on each side for finishing.

#### Model Information

Fabric: Stitches and Spice 36 count linen, Peacock Fantasy  
Threads: Stitches and Spice Sampler Threads (SSST) and Stranded Cotton (SSSC), The Thread Gatherer Silk 'n Colors (TGSNC), and Madeira Metallic Gold 3, #3008 (M).

#### Stitching Instructions

1. Complete all cross stitches according to the symbol key.
2. Backstitch the following:
  - a) Four corner flower stems with one ply of SSSC Firecracker.
  - b) Pistils of the four side small red flowers with one ply of Metallic Gold 3 #3008.
  - c) Lower stems of the same flowers with one ply of SSSC Ocean Waves.
  - d) The inside of both the inside and outside borders with one ply of SSST Ocean Waves.
3. Work Rhodes stitches with one ply of TGSNC Monsoon Sky 1036. See page 50 for stitch diagram.



#### Symbol Key

Symbol	Thread	Ply	DMC
*	TGSNC Monsoon Sky 1036	2	3807
△	SSSC Firecracker	2	4200
⊙	SSST Firecracker	1	4200
■	SSSC Ocean Waves	2	4030
♥	SSST Ocean Waves	1	4030
Z	M Metallic Gold 3 #3008	2	5284

#### Finishing Idea

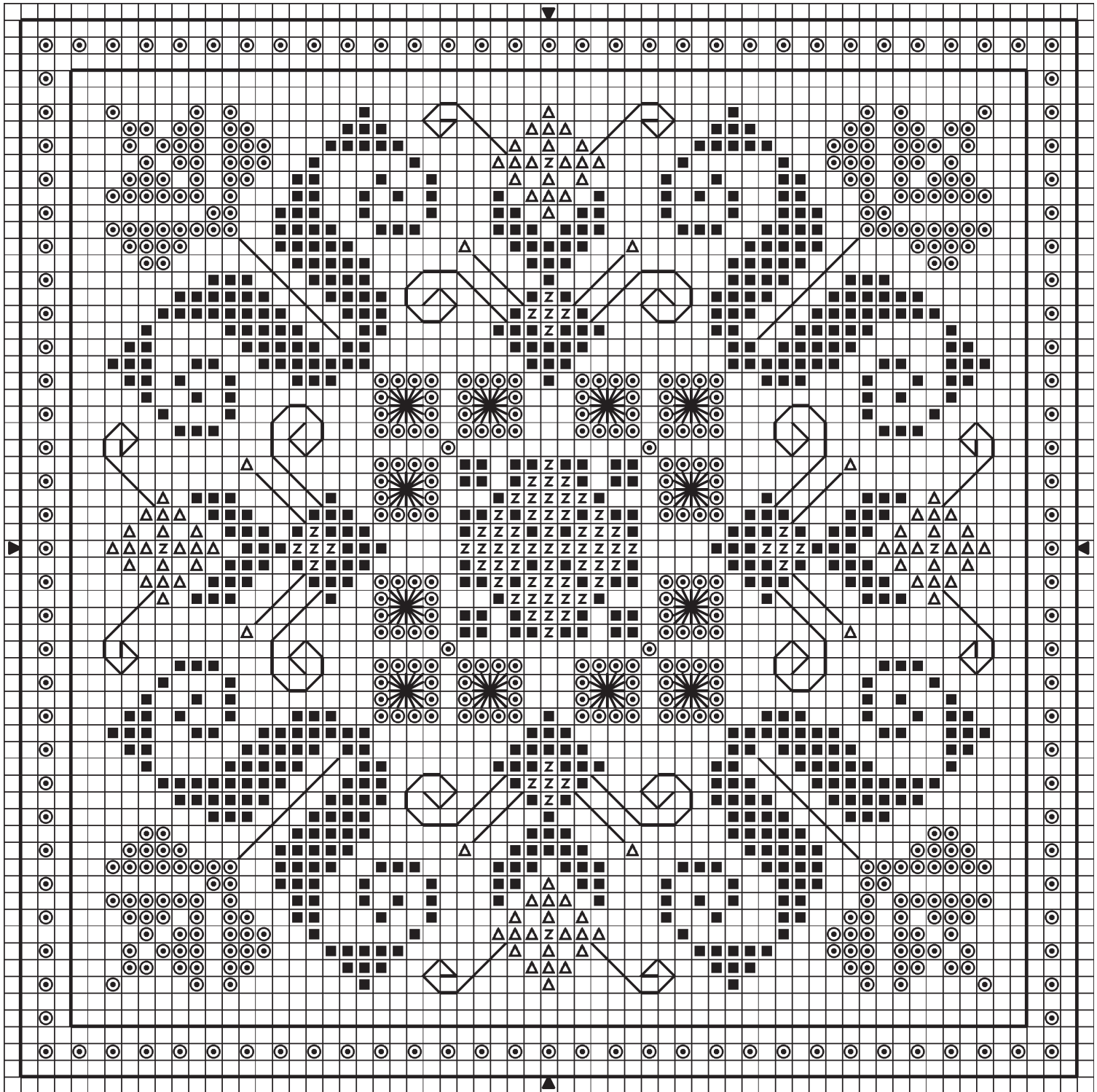
Giulia has finished her design into a padded board ornament with coral pink silk for the backing and gold for the trim and hanger. She has also created a beautiful tassel from the leftover threads and a special Deruta carved bead with gold foil. This bead, with antique Byzantine designs, is produced in Deruta, Umbria, Italy. A medieval town, world famous for its majolica and pottery.



[www.puntiantichi.com](http://www.puntiantichi.com)



# Ceruta Christmas Ornament Chart





# Frosted Pinecones

## by Lady Periphaeria of Periphaeria Designs

Lady Periphaeria has designed an ornament with Slavic influence, but with not-so-traditional colours.

**Total design size:** 47 x 47 stitches

### Finished Stitched Area

14/28 count: 3 1/3" (8.5 cm) square

16/32 count: 3" (7.5 cm) square

18/36 count: 2 5/8" (6.5 cm) square

20/40 count: 2 1/3" (6 cm) square

Allow an extra 2" on each side for finishing.

### Model Information

Fabric: 32 count linen from Wichelt, Wild Raspberry

Threads: DMC six stranded cotton

thread



### Symbol Key

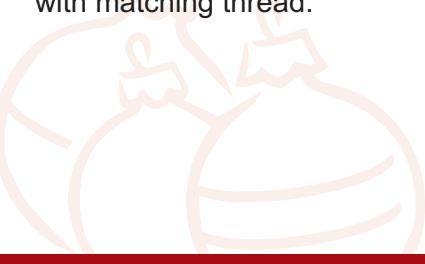
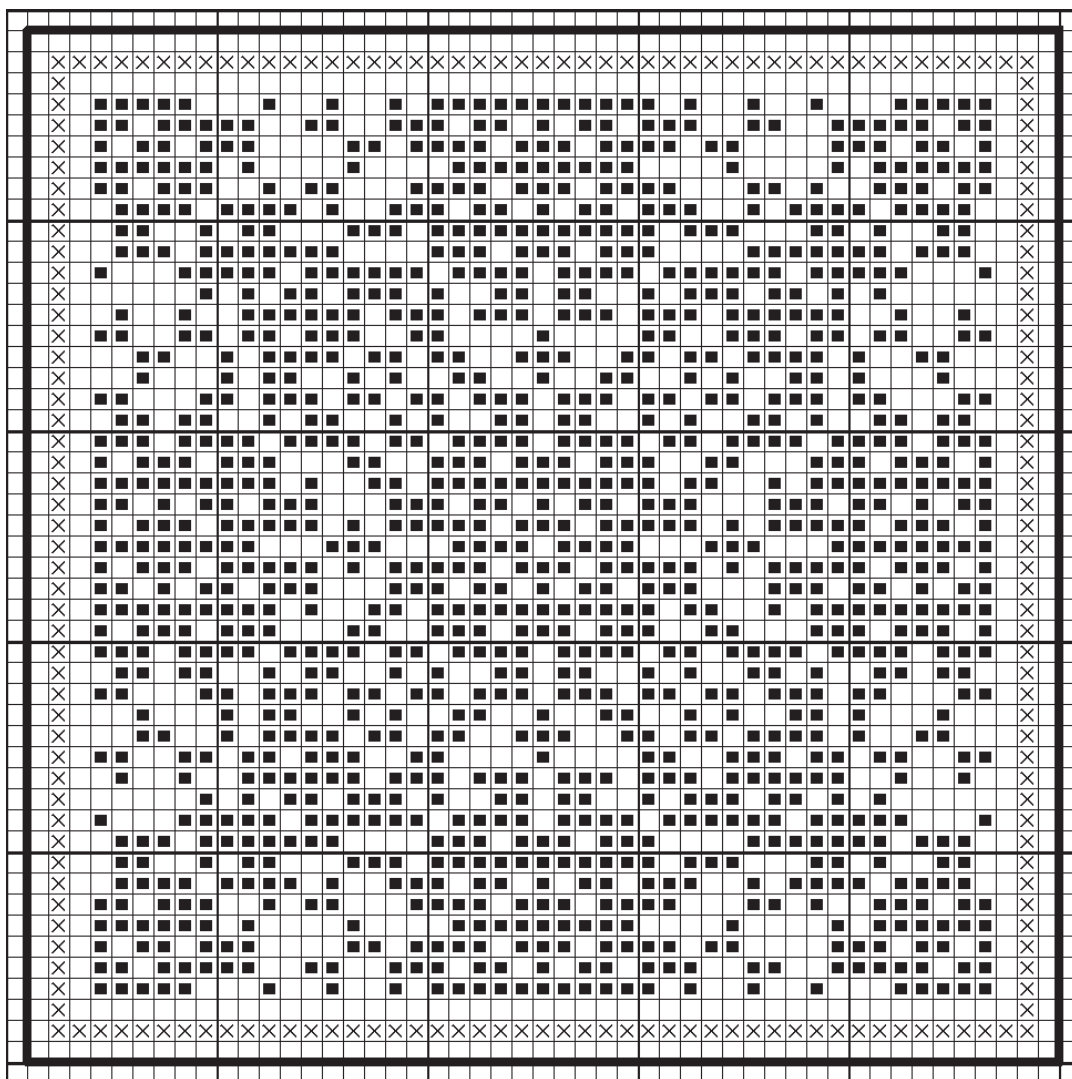
Symbol	DMC	Ply
X	DMC 221	2
■	DMC 224	2

### Stitching Instructions

1. Start stitching from the centre of the chart in the centre of your fabric.
2. Stitch all cross stitches according to the symbol key.
3. Stitch the border with two ply of DMC 224.
4. Stitch this border again on a second piece of identical linen.

### Finishing Idea

Lady Periphaeria has finished her ornament into a small pillow with a twisted cord hanger. You will need the same linen for the backing and a twisted cord made with matching thread.





# Trois Petits Lutins by Marie-Ange Lescarmontier of Lily Poppins

Marie-Ange Lescarmontier designs under Atelier des Fees Brodeuses, a collaboration of French designers. She has created "Trois petits lutins" which means three little elves.



**Total design size:** 60 x 60 stitches

## Finished Stitched Area

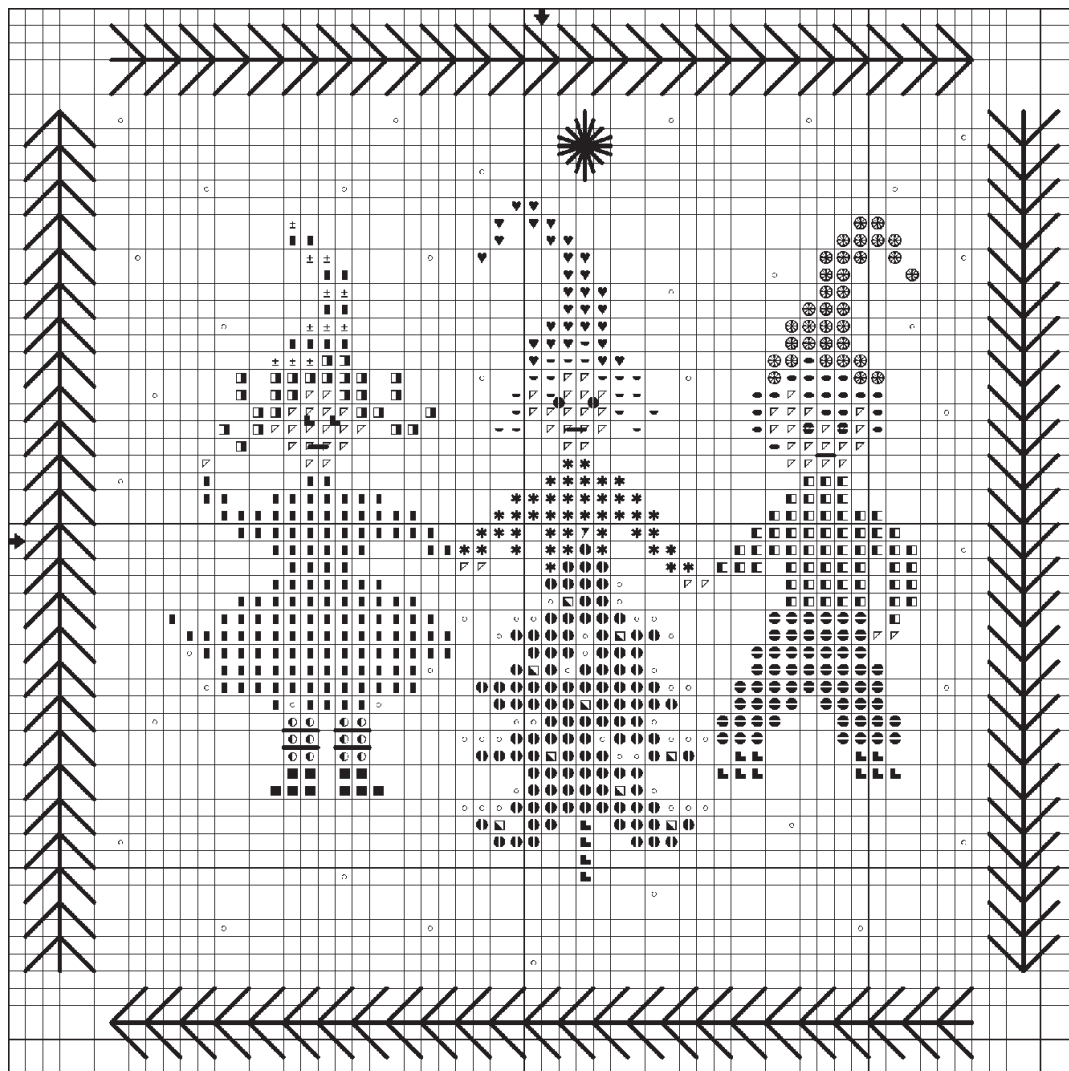
14/28 count: 4 1/3" (11 cm) square  
16/32 count: 3 3/4" (9.5 cm) square  
18/36 count: 3 1/3" (8.5 cm) square  
20/40 count: 3" (7.5 cm) square  
Allow an extra 2" on each side for finishing.

## Model Information

Fabric: 40 count Newcastle linen, Dirty from Zweigart  
Threads: DMC six stranded cotton thread and Weeks Dye Works six stranded hand dyed cotton (WDW).  
Other: Mill Hill Petite Seed Beads (MHPSB)

## Symbol Key

Symbol	Thread
■	DMC 349
●	DMC 799
○	DMC 823
♥	DMC 907
◀	DMC 938
◻	DMC 948
■	DMC 3371
■	DMC 3688
○	DMC 3689
●	DMC 3820
●	DMC 3822
*	DMC 3839
◻	DMC 3857
○	DMC B5200
±	DMC E415 Silver
◐	WDW 1276 Blue Spruce
◑	MHPGSB 42011
◒	MHPGSB 42013 Red



## Stitching Instructions

1. Start stitching from the centre of the chart in the centre of your fabric.
2. Stitch all cross stitches according to the symbol key with one ply of thread.
3. Backstitch all straight lines with one ply of DMC 3688.
4. French Knot with one ply of thread:
  - a) Left girl's eyes with DMC 938
  - b) Middle girl's eyes with DMC 938
  - c) Right boy's eyes with DMC 823

5. Stitch the Smyrna Star with one ply of DMC E3821.
6. Stitch the Fern stitch border with one ply of WDW 1276 Blue Spruce. See page 50 for stitch diagrams.

## Finishing Idea

Marie-Ange has turned her design into a small pillow ornament with co-ordinating backing fabric and a green ribbon hanger.



[www.atelierfeesbrodeuses.fr](http://www.atelierfeesbrodeuses.fr)



# The Red Noel Ornament by Maryse Dupont of Les grilles de Maryse



[maisonsdemaryse.canalblog.com](http://maisonsdemaryse.canalblog.com)

**Total design size:** 56 x 56 stitches

## Finished Stitched Area

14/28 count: 4" (10 cm) square

16/32 count: 3 1/2" (9 cm) square

18/36 count: 3 1/8" (8 cm) square

20/40 count: 2 5/8" (7 cm) square

Allow an extra 2" on each side for finishing.

## Model Information

Fabric: 32 count Belfast linen, Flax

Threads: DMC six stranded cotton

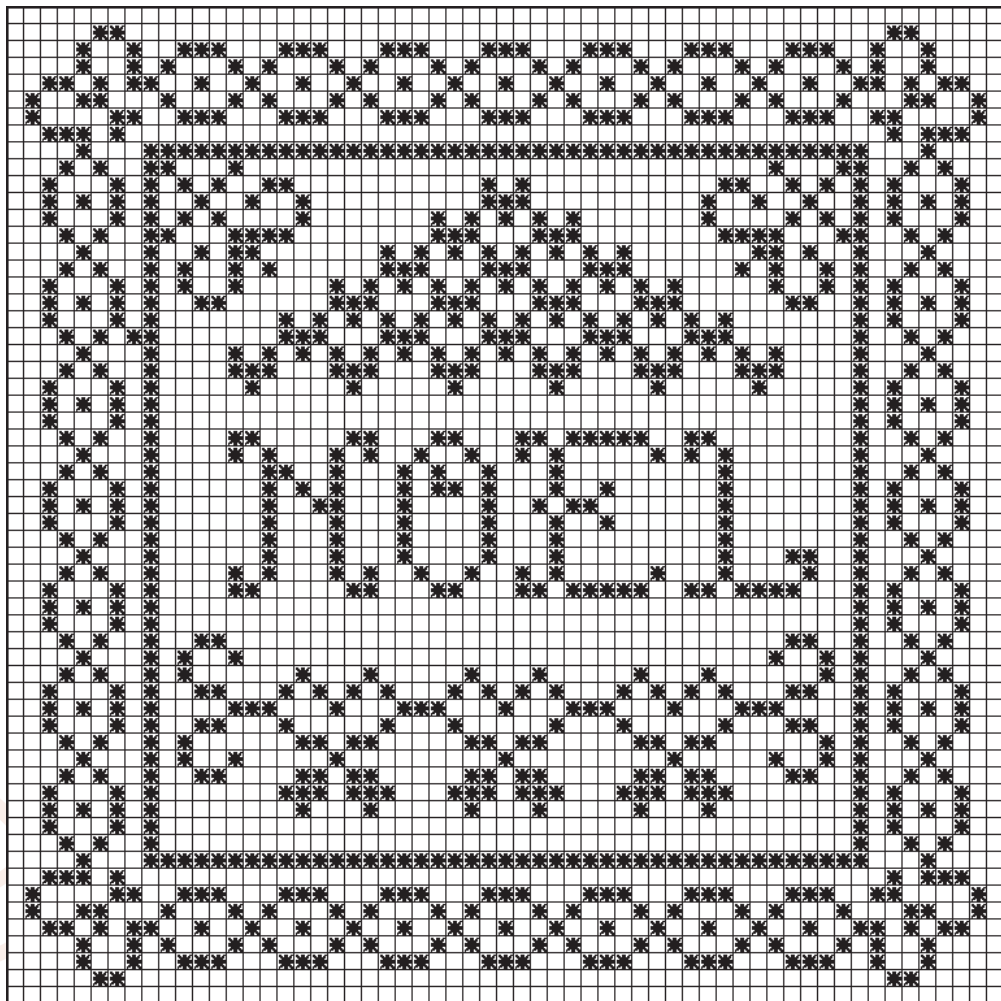


## Stitching Instructions

1. Start stitching from the centre of the chart in the centre of your fabric.
2. Stitch all cross stitches with one ply of DMC 221.

## Finishing Instructions

Maryse has turned this design into a small pillow ornament. You will need a red piece of linen for the back and twisted cord in the same colour as the stitching, for the edge trim and hanger.





# Christmas Distelfink

## by Judith Tuttle of Twisted Oaks Designs

**Total design size:** 55 x 41 stitches

### Finished Stitched Area

14/28 count: 4" x 3" (10 x 7.5 cm)  
16/32 count: 3 1/2" x 2 1/2" (9 x 6.5 cm)  
18/36 count: 3" x 2 1/3" (8 x 6 cm)  
20/40 count: 2 3/4" x 2" (7 x 5 cm)  
Allow an extra 3" on each side for finishing.

### Model Information

Fabric: 28 count Jobelan from Wichelt, White  
Threads: DMC six stranded cotton

### Symbol Key

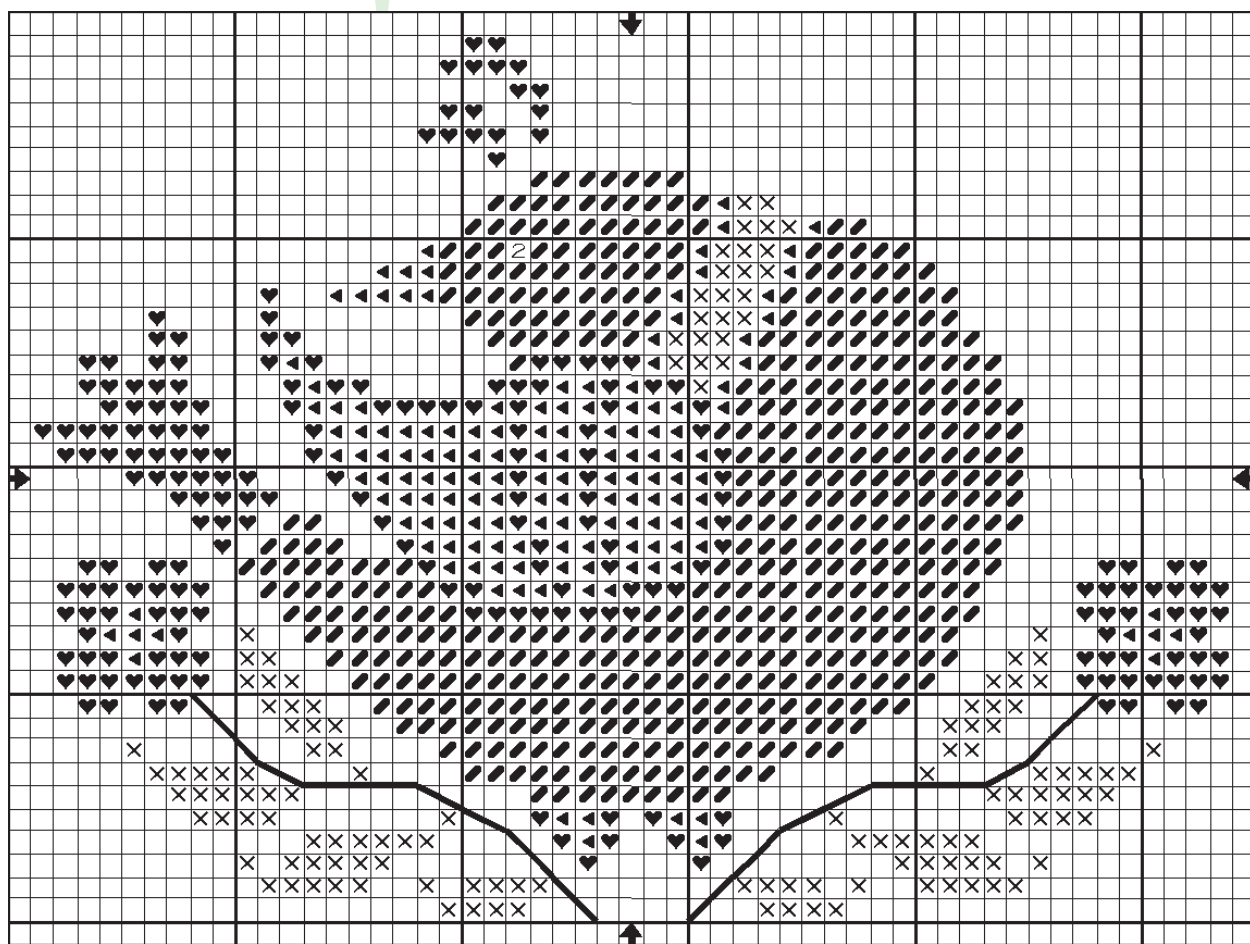
Symbol	DMC	Anchor	Ply
2	310	403	2
◀	444	290	2
×	3347	266	2
✂	824	164	2
♥	817	13	2

### Stitching Instructions

1. Start stitching from the centre of the chart in the centre of your fabric.
2. Stitch all cross stitches according to the symbol key.
3. Backstitch the straight line with two ply of DMC 310.

### Finishing Idea

Judith has finished her design into an oval padded board ornament with matching backing fabric. It is edged with green twisted cord which also makes the hanger.





# Treasure Christmas Pincushion by Maria Teresa Vitali of MTV Designs

*Maria has designed an heirloom ornament stitched in silk on hand dyed linen accentuated with crystal drops. Gorgeous!*

**Total design size:** 53 x 53 stitches

## Finished Stitched Area

14/28 count: 3 5/6" (9.5 cm) square

16/32 count: 3 1/3" (8.5 cm) square

18/36 count: 3" (7.5 cm) square

20/40 count: 2 2/3" (6.5 cm) square

Allow an extra 2" on each side for finishing.

## Model Information

Fabric: 32 count linen, Light Exemplar from Lakeside Linens

Threads: Vikki Clayton Silk Threads (VC)

Other: Mill Hill Petite Beads (MHPB)

## Symbol Key

Symbol	Ply	Thread	DMC
T	2	VC Imperial Green	3346
+	2	VC Gandy Tango	321
x	2	VC Old Maid of the Forest 934	
●	1	MHPB #40557	

## Stitching Instructions

1. Start stitching from the centre of the chart in the centre of your fabric.
2. Stitch all cross stitches according to the symbol key.
3. Backstitch the border with two ply of VC Imperial Green.
4. Work the Christmas flowers as follows:
  - a) Use two ply of VC Imperial Green for the leaves.
  - b) Use two ply of VC Gandy Tango for the petals. See page 50 for stitch diagram.



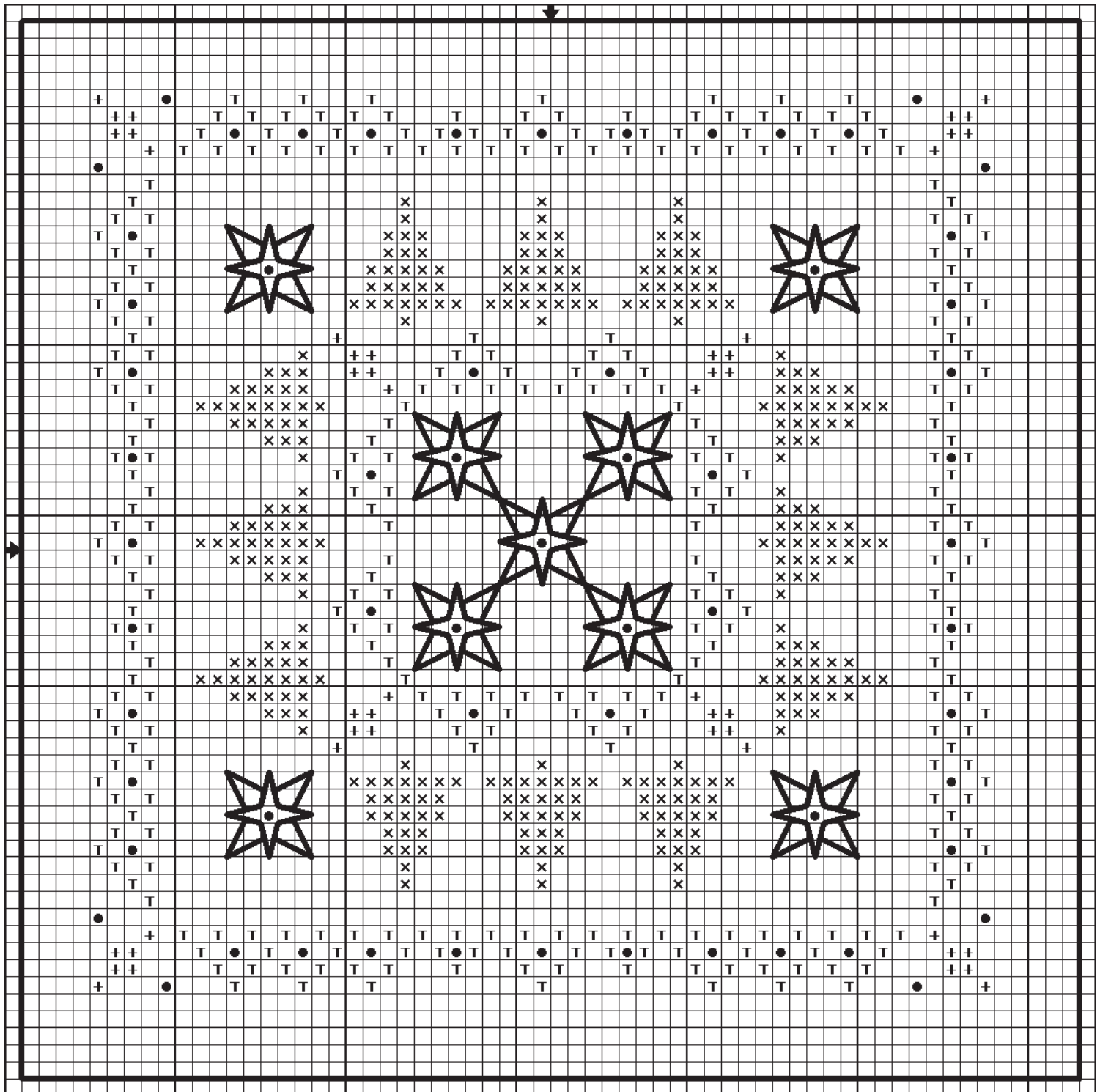
## Finishing Idea

Maria has transformed her design into a pincushion or pillow ornament. An identical piece of linen was used for the backing. Around the edge she has couched Mill Hill Seed Beads #00557 and at each corner is a Swarovski peridot drop.





# Treasure Christmas Pincushion Chart





# The Fold-Up by Judy Odell of Just A Thought

Our feature pattern this month is a little different. Instead of asking a designer for ornaments, I asked Judy Odell to come up with a new idea for finishing Christmas ornaments. If you haven't already heard of Judy, she is a wonderful professional finisher from the US and has a range of books with original finishing ideas. Her company is called, "Just a Thought".

Well, Judy has come up with this great new idea called the "Fold-up". She calls it a cousin to her other invention, the "Flat-fold". This little finishing technique will soon become a favourite of yours. The reason is because you can do so much with it. The Fold-up is a double-sided display which folds in the middle with a flat base. The main feature of the Fold-up is that it lays flat and can hold anywhere from one to six stitch designs on one fold up. So if you are doing a calendar, for example, you only need two fold-ups to hold the whole year. If you are stitching the four seasons you can add them all on the same fold-up and then just reverse the fold-up to change seasons. It works wonderfully as a Christmas ornament as you can put a design on each side, fold-up to either hang it from the tree or sit on the mantle piece. Genius!

We have two charts in this issue just for the Fold-up. Judy has designed a "Nutcracker Santa" and Giulia Manfredini has designed "Christmas Ornament of Friendship". We have full instructions and photos to finish the Fold-up in Judy Odell's easy-to-read-and-understand finishing instructions.

Remember you saw the Fold-up here first!



[www.justathought.net](http://www.justathought.net)



# The Fold-Up by Judy Odell

## Stitching Set-Up Hints

Before we start the actual finishing I want to give you a few tips on how to lay your stitching out to finish a fold-up. I will talk about a two sided fold-up only. This is a fold up like my Santa Nutcracker pictured in Diagram 1.

First do some basting. Baste the top area. Let's say 5" wide and 5" high. This, of course, depends on your choice in designs, but the top and bottom basting areas must be the same size even if you do not fill them in completely. (The Santa here is actually the same size on top as on bottom, but the picture angle makes the top look smaller than the bottom picture.)

Whatever design you choose to stitch you need to also baste the bottom base area. This needs to be wide enough to stand the fold-up on. The width also depends on the size of your stitched design. You should probably try to leave about three inches between the stitching for a medium size 5" x 5" design. If you only plan on hanging your fold-up you can leave less space for the base as I did for the Santa Nutcracker.

**IMPORTANT: Don't forget to turn your stitching upside-down when you stitch the back side. If you forget, it will be upside down when you put it together. If this happens you will have to cut them apart and sew them together the right way.**

## Finishing Instructions

### DIAGRAM 1

Cut the seam allowances down to about 1" beyond the highest and widest areas of your stitching or at your basting lines. Remember that if you want extra margin around your stitching you need to add it **plus** the 1" seam allowance.

DIAGRAM 1



Now measure your stitching to figure out how large you need to cut your lightweight cardboard.

DIAGRAM 2



Measure at the widest and tallest points on your stitching or at your basting lines. The Santa pictured is 9" high by 3" wide.

### DIAGRAM 2

Cut a piece of lightweight cardboard using these measurements and **lightly** glue cotton batting to one side of the cardboard.

At this time you need to decide how padded you want your fold-up. Add more cotton batting for more padding.

Cut the cotton batting (or whatever you used) to fit the cardboard exact. Nothing should extend beyond the edges of the cardboard.

### DIAGRAM 3

Now fold the stitching in half and insert pins at both edges to mark the centre.

Turn the cardboard over and mark a line going across the exact centre of the cardboard.

### DIAGRAM 4

Centre the cardboard onto the stitched linen with the cotton batting against the wrong side of the stitching. Pin the end seam allowances down. Check to make sure the stitching is centred on the cardboard and if you are happy with the placement then either lace or glue all seam allowances down. **Notice the pins are still at centre.**

Turn your fold-up over and mark where you want to fold your cardboard on the linen side of the cardboard.

Now turn your fold-up over again and draw a line across the cardboard just at the hole you marked earlier.

Measure the distance between the centre line and the line you just marked and draw another straight line the same distance on the opposite side of the centre line.

Poke a hole through this second line and check the stitching to see that it is the same distance from the stitching as the opposite side.

DIAGRAM 3





# The Fold-Up by Judy Odell

## DIAGRAM 5

Now it is time to do the Odell Bend. I made it up so I named it after me. I just love to see my name in lights... :) Anyway, poke holes across the top line you marked on the fold-up. Do not poke holes across the centre line. **REPEAT: DO NOT Poke holes across the centre lines.** Bend the cardboard back and forth at the holes. Kind of like when you bend a credit card until it brakes in half. But, you are not trying to break it in half here. You do want it to bend easily though.

Once you have the first bend, poke holes in the bottom line you marked and bend it also. Do not poke holes across the centre line. **REPEAT: DO NOT POKE HOLES ACROSS THE CENTRE LINE. Do not bend at the centre line.**

**Whew... can you tell it is important that you do not poke holes across the centre line and do not bend at the centre line either?** You are just perforating the cardboard so it will bend easily.

## DIAGRAM 6

Add ties at both ends. Actually add whatever you choose as a closure. A button and loop would be cute or a cord. If you think you may want to hang your fold-up then you can add a hanger on the **back side** at this time.

Your fold-up is almost finished. You now have to decide what backing you want to add on the inside.

## DIAGRAM 7

For my Nutcracker Santa ornament I glued felt onto the back of the fold-up and stitched across the tops to make sure the felt did not pull away when tying and untying. Take a few extra stitches when you get to the ribbon ties.

Cut the felt about an inch larger than the fold-up and use pinking sheers to trim the felt down to about 1/4" beyond the fold-up.

For Giulia's Christmas Ornament of Friendship, I cut decorative fabric about an inch larger than the fold-up and folded the seam allowances down so the decorative fabric fit to all four edges. Stitch the decorative fabric on all the way around.

I then made cord with tassels for the embellishment.

If you need to know how to make cord and add tassels to the end of them you can go to my website and click on finishing instructions. There is a cord and tassel making instruction PDF you can print out and keep for this ornament and future reference. [www.justathought.net](http://www.justathought.net)

For this fold-up you need to make two lengths of cord.

When you stitch the cord on, start at the centre bottom and stitch around to the centre top. This will leave the extra length of cord loose and will be used for tying the fold-up together.

Now stitch the second cord length starting at the opposite bottom. Tack the second cord to the first cord you previously stitched on.

When you get to the top tack it to the beginning of the first cord and leave the loose end as the other half of the tie.

That's it, all done. Merry Christmas!

DIAGRAM 6

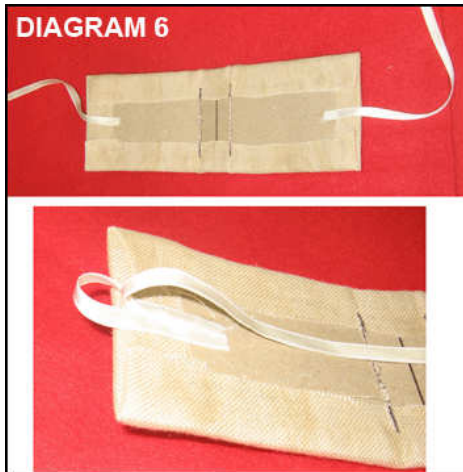


DIAGRAM 7



DIAGRAM 4

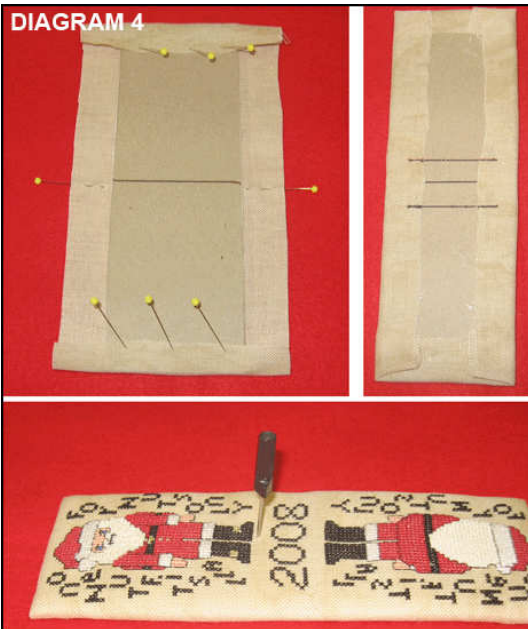


DIAGRAM 5





# Nutcracker Santa by Judy Odell of Just A Thought

**Total design size:** 30 x 124 stitches

## Finished Stitched Area

14/28 count: 2 1/8" x 8 7/8" (5.5 x 22.5 cm)

16/32 count: 1 7/8" x 7 3/4" (5 x 19.5 cm)

18/36 count: 1 2/3" x 6 7/8" (4 x 17.5 cm)

20/40 count: 1 1/2" x 6 1/4" (4 x 16 cm)

Allow an extra 3" on each side for finishing.

## Model Information

Fabric: 28 count Cashel, Vintage Country Mocha from Zweigart

Threads: DMC six stranded cotton and pearl thread and Rainbow Gallery Whisper thread.

## Stitching Instructions

1. Start stitching from the centre of the chart in the centre of your fabric.
2. Beard and hair: Cross stitch first and then go back and French knot with one ply of 1 ply DMC Pearl #8, Ecru over each cross stitch.

3. Teeth: Cross stitch with two ply of DMC White.
4. Half cross stitch Santa's beard, fur on hat and cuffs with one ply of Rainbow Gallery Whisper, white.
5. Stitch all the other cross stitches according to the symbol key.
6. Complete all backstitches with one ply of DMC 310.

## Symbol Key

Symbol	DMC	Ply
✱	DMC 304	2
◇	DMC Ecru	2
3	DMC 825	2
■	DMC 310	2
■	DMC 825	2
I	DMC E5282	
=	Rainbow Gallery Whisper, White	(1 ply)

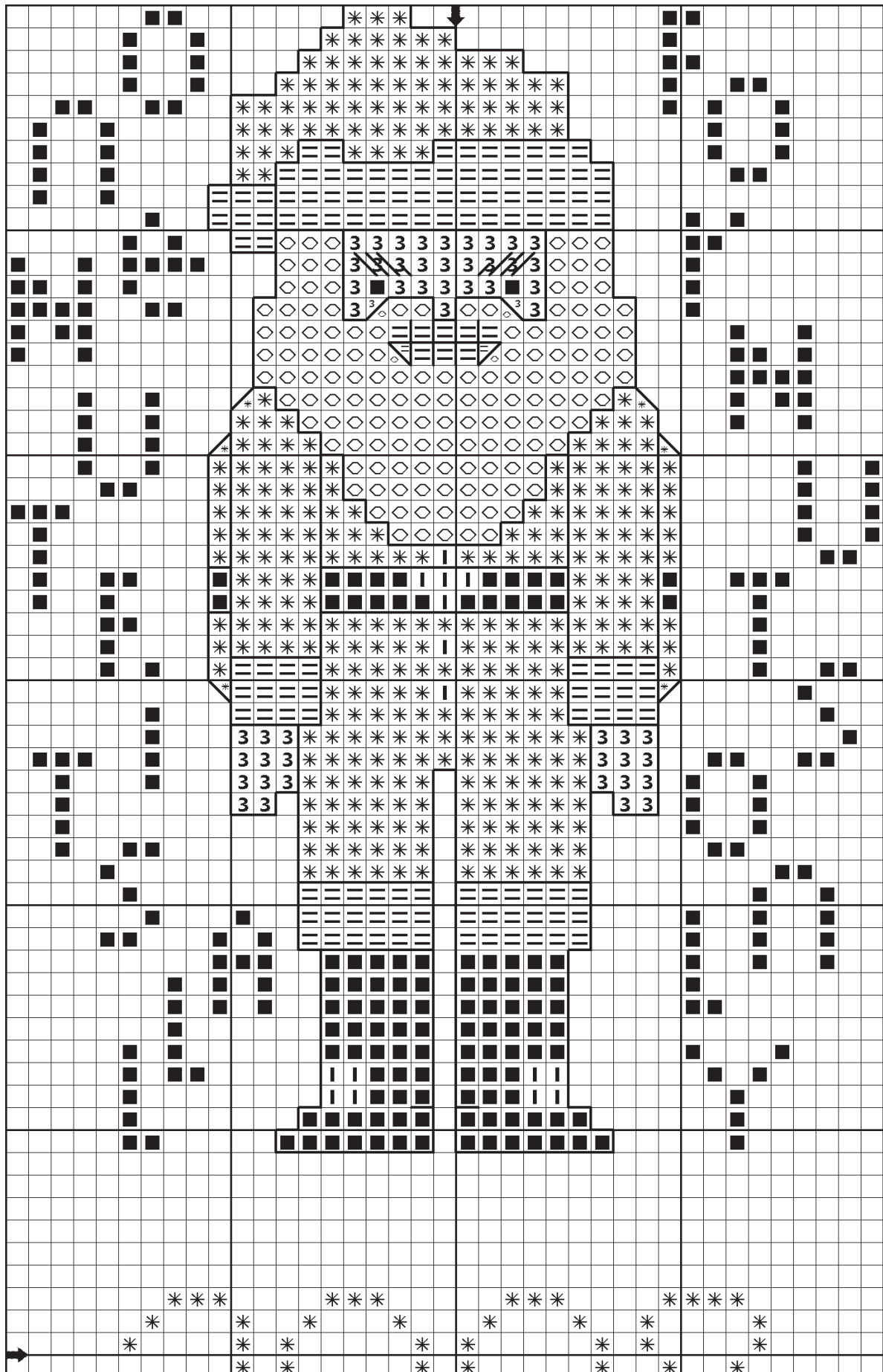
## Finishing Instructions

See pages 17 to 18 for finishing instructions.





# Nutcracker Santa Chart Top



The image displays a 30x30 grid puzzle. The grid is divided into four quadrants by a central 10x10 area. The top and bottom quadrants contain numbers and symbols, while the left and right quadrants contain numbers and symbols. The central 10x10 area contains numbers and symbols, including a large 'X' shape formed by numbers and symbols.

The grid is composed of 30 rows and 30 columns. The top and bottom quadrants (rows 1-10 and 21-30) contain numbers and symbols. The left and right quadrants (columns 1-10 and 21-30) contain numbers and symbols. The central 10x10 area (rows 11-20, columns 11-20) contains numbers and symbols, including a large 'X' shape formed by numbers and symbols.

The central 10x10 area is further divided into four quadrants by a central 5x5 area. The top-left quadrant (rows 11-15, columns 11-15) contains numbers and symbols. The top-right quadrant (rows 11-15, columns 16-20) contains numbers and symbols. The bottom-left quadrant (rows 16-20, columns 11-15) contains numbers and symbols. The bottom-right quadrant (rows 16-20, columns 16-20) contains numbers and symbols.

The central 5x5 area (rows 16-20, columns 11-15) contains numbers and symbols, including a large 'X' shape formed by numbers and symbols.

The grid is a complex puzzle that requires logical reasoning and pattern recognition to solve. The numbers and symbols are distributed throughout the grid, with some appearing in the central area and others in the outer quadrants. The puzzle is designed to be challenging and engaging for the solver.



# Christmas Ornament of Friendship

## by Giulia Manfredini of Giulia Punti Antichi

*This ornament is dedicated to my dearest friend Lillian Taddei, from Alameda, CA, USA, who has been so nice to choose the right old fashioned Christmas threads for this ornament of friendship. You can create an ornament of friendship for your best friend stitching your initials on one side and the initials of your friend on the other side. Use the alphabet on page 51 to personalise your ornament.*

**Total design size:** 47 x 133 stitches

### Finished Stitched Area

14/28 count: 3 3/8" x 9 1/2" (8.5 x 24 cm)

16/32 count: 3" x 8 1/3" (7.5 x 21 cm)

18/36 count: 2 5/8" x 7 3/8" (6.5 x 19 cm)

20/40 count: 2 1/3" x 6 2/3" (6 x 17 cm)

Allow an extra 3" on each side for finishing.

### Model Information

Fabric: 32 count Belfast linen from Zweigart

Threads: Gloriana Sampler Luminescence Silk threads (GLS)

### Stitching Instructions

1. Start stitching from the centre of the chart in the centre of your fabric. Stitch diagrams are on page 50.
2. The whole model has been stitched in Smyrna Cross stitch with one ply over two linen threads as per the symbol key.

If you wish, you can substitute Smyrna stitches with cross stitches. We recommend using two ply of thread for cross stitches.

3. Backstitch two small flowers with one ply GLS Slate Blue 124.
4. Long stitch the pistils of flowers with one ply GLS Lacquered Gold 045.
5. Work Herringbone stitch around "Natale" and "2008" with one ply GLS Poinsettia 035.
6. Rhodes Stitch over six in the centre of the flower with one ply of GLS Lacquered Gold 045.

### Symbol Key

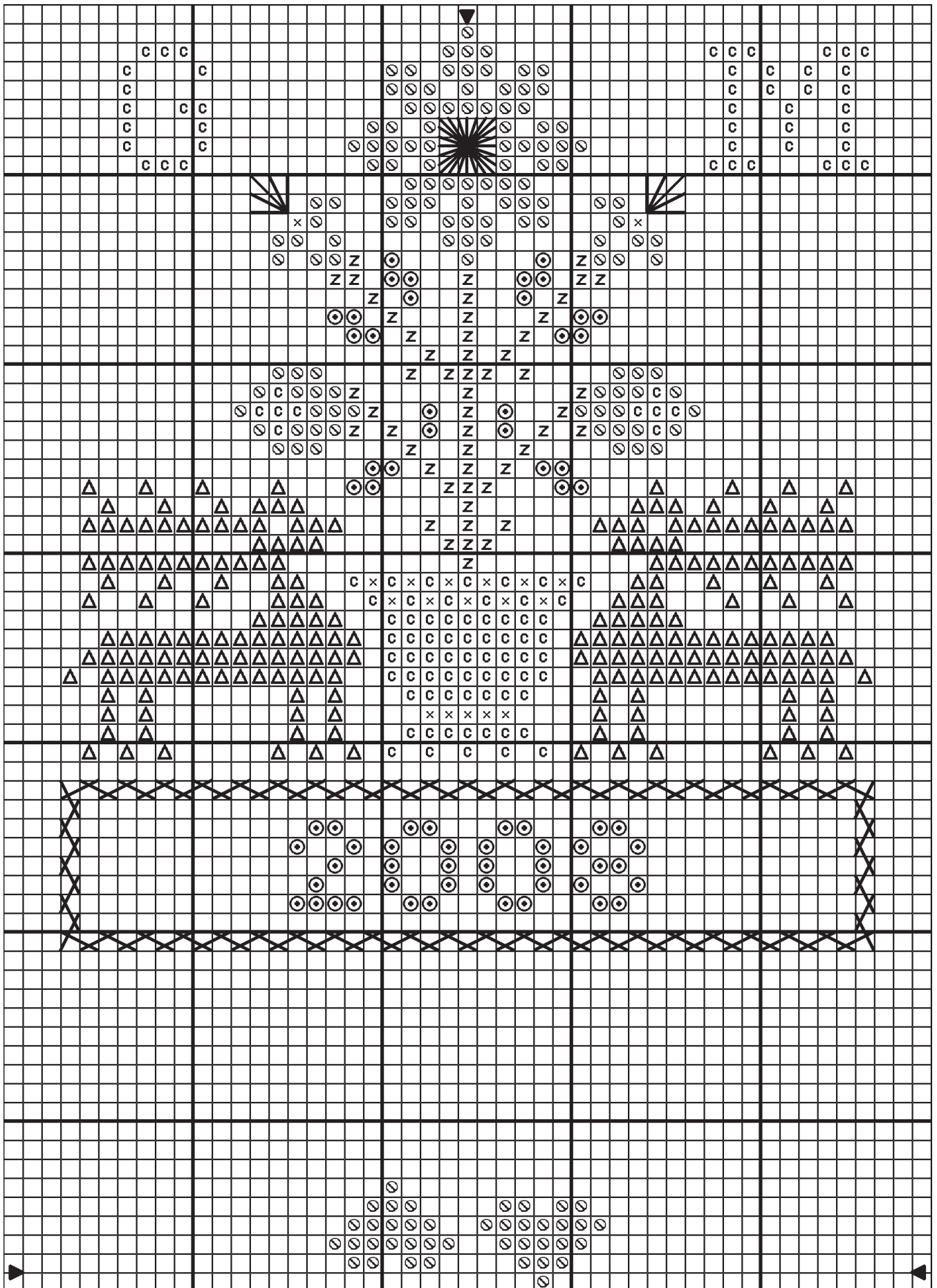
Symbol	GLS	DMC
⊙	Poinsettia 035	221
△	Pecan 133	3863
⊙	Holiday Green 016	3051
C	Slate Blue 124	931
✕	Lacquered Gold 045	680
Z	Olive Grove 116	730

### Finishing Instructions

See pages 17 to 18 for finishing instructions.

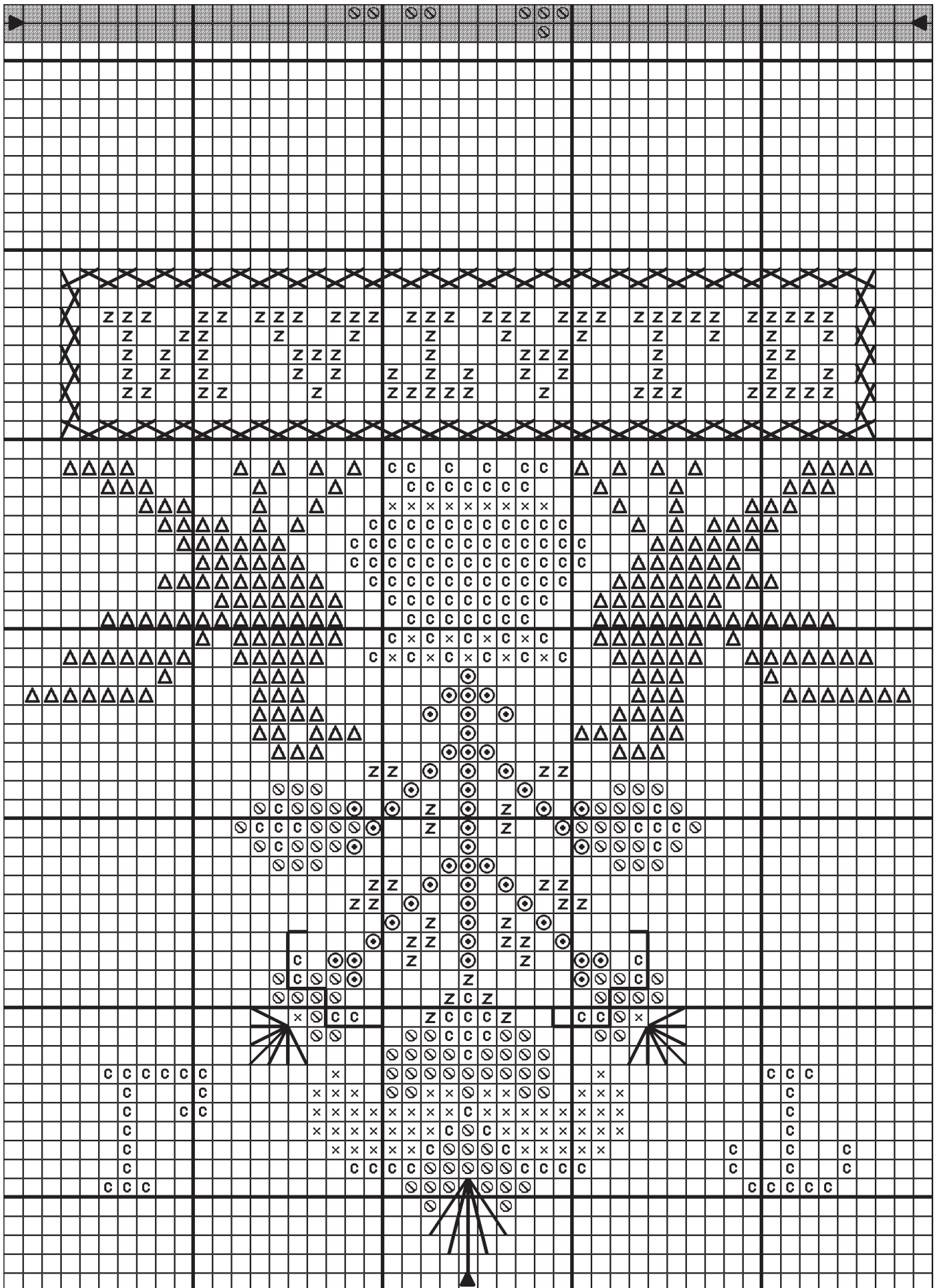


# Friendship Ornament Chart Top





# Friendship Ornament Chart Bottom



# Christmas Hearts by Lady Steward of Timber Creek Needleworks

The theme for Lady's ornament is "To give love on Christmas Day". Lady has designed two versions ; a bright one and a pastel one.

**Total design size:** 53 x 53 stitches

## Finished Stitched Area

14/28 count: 3 5/6" (9.5 cm) square  
16/32 count: 3 1/3" (8.5 cm) square  
18/36 count: 3" (7.5 cm) square  
20/40 count: 2 2/3" (7 cm) square  
Allow an extra 2" on each side for finishing.

## Model Information

Fabric:

- Bright: 28 count linen, Salt Carolina from Charles Craft
- Pastel: 32 count Tea Irish Linen from Charles Craft

Threads: DMC six stranded cotton and Light Effects

Other: 4mm glass beads and Mill Hill glass seed beads (MHGSB)



## Stitching Instructions

1. Start stitching from the centre of the chart in the centre of your fabric.
2. Stitch all cross stitches according to the symbol key.
3. Backstitch the border around the Kloster blocks with one ply of DMC E3852 (bright) or E3821 (pastel).
4. Work the Kloster blocks with two ply of DMC 783 (bright) or DMC 676 (pastel).
5. Work all Eyelets with two ply of DMC 783 (bright) or DMC 676 (pastel).
6. Work Lazy Daisy stitches in the middle with two ply of DMC 505 (bright) or DMC 958 (pastel)
7. Work Lazy Daisy stitches at the corners with two ply of DMC E3852 (bright) or DMC E3821 (pastel).
8. Work all backstitching inside Lazy Daisy stitches with co-ordinating thread.
9. Attach MHGSB 00479 White (bright and pastel) on the (O) symbol with co-ordinating thread.
10. On the symbol (●) attached a 4mm white pearl glass bead (bright) or 4mm crystal pink glass bead (pastel).

## Finishing Idea

Lody has turned both versions of this design into square padded ornaments. On the bright version, she has trimmed the corners to give a more "rounded" affect. Matching fabric was used to back the ornaments. For the bright

version green and gold cord was used to edge the ornament and create a hanging loop. For the pastel version, gold tinsel and a length of crystal fused beads was used to edge the ornament and create a hanging loop. Lody has kindly posted a pictorial finishing tutorial for these ornaments on her blog: <http://lodysc creations.blogspot.com/2008/04/pocket-ornie-finishing-instruction.html>

## Symbol Key

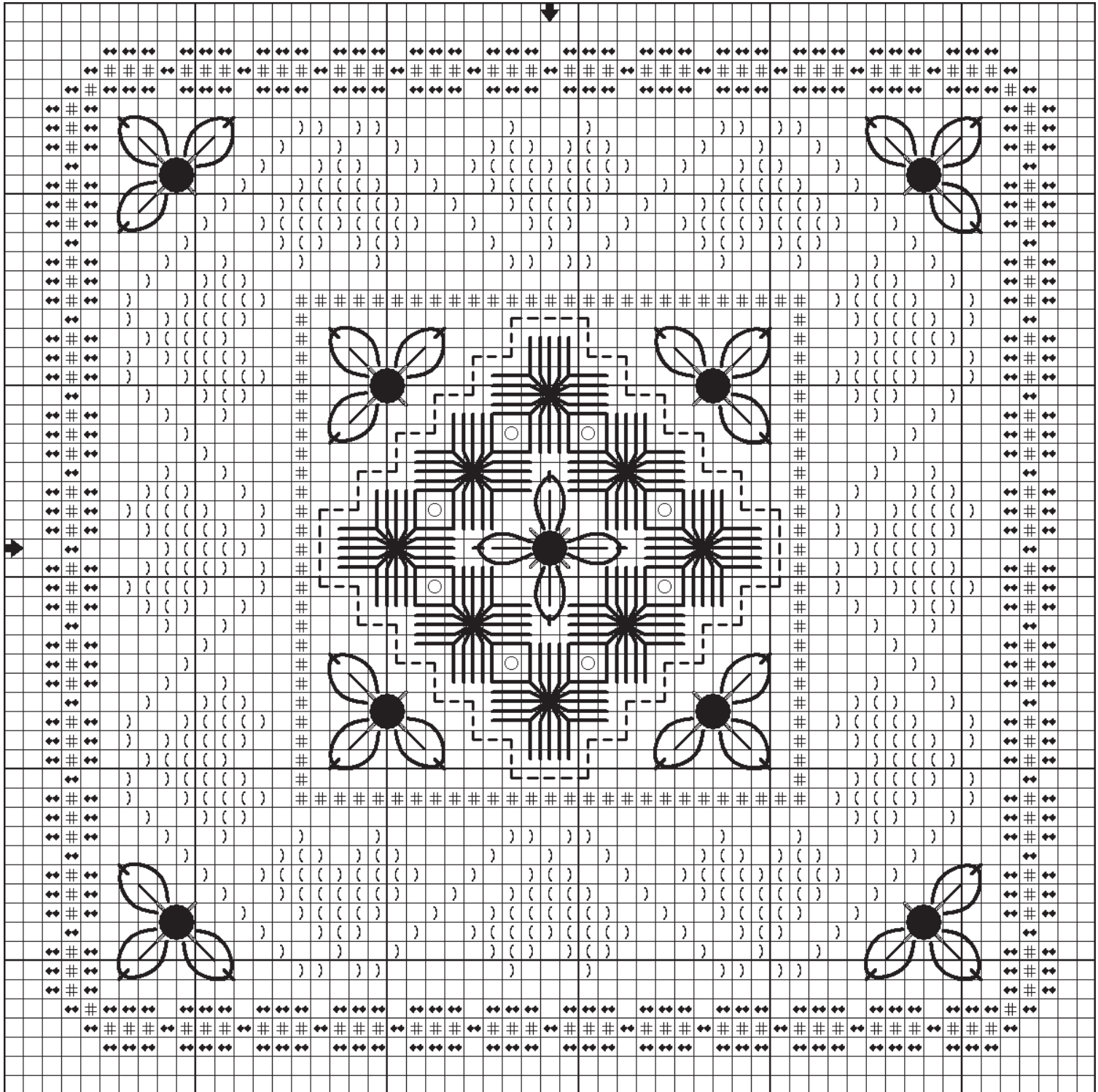
Symbol	Ply	Bright	Pastel
)	2	DMC 505	DMC 958
(	2	DMC 777	DMC 899
♦♦	2	DMC 783	DMC 676
#	2	DMC Ecru	DMC Ecru



[www.timbercreekneedleworks.com](http://www.timbercreekneedleworks.com)



# Christmas Hearts Chart



# Christmas Poinsettia Topiary by Pam Lewis & Susan Rohm of Praiseworthy Stitches

*A Christmas topiary in the whimsical sampler style of Praiseworthy Stitches will be a lovely touch for your tree.*

**Total design size:** 43 x 57 stitches

## Finished Stitched Area

14/28 count: 3" x 4" (8 x 10.5 cm)

16/32 count: 2 3/4" x 3 1/2" (7 x 9 cm)

18/36 count: 2 3/8" x 3 1/6" (6 x 8 cm)

20/40 count: 2 1/6" x 2 5/6" (5.5 x 7 cm)

Allow an extra 3" on each side for finishing.

## Model Information

Fabric: 32 count Navy Bean from Lakeside Linens

Threads: Gentle Art Sampler Threads (GAST)

Other: Mill Hill Glass Seed Beads (MHGSB)

## Symbol Key

Symbol	Thread
#	GAST Dried Thyme
×	GAST Holly Berry
▲	GAST Avocado

## Stitching Instructions

1. Start stitching from the centre of the chart in the centre of your fabric.
2. Stitch all cross stitches and petite stitches (cross stitch one over one) with two ply of thread according to the symbol key.
3. Attach MHGSB #00557, Gold, with co-ordinating thread to the (●) symbol.

## Finishing Idea

This lovely design has been turned into an oval padded ornament pinkeep. Red silk ribbon is around the edge and forms a multi looped bow at the top. Pins have been inserted around the edge.



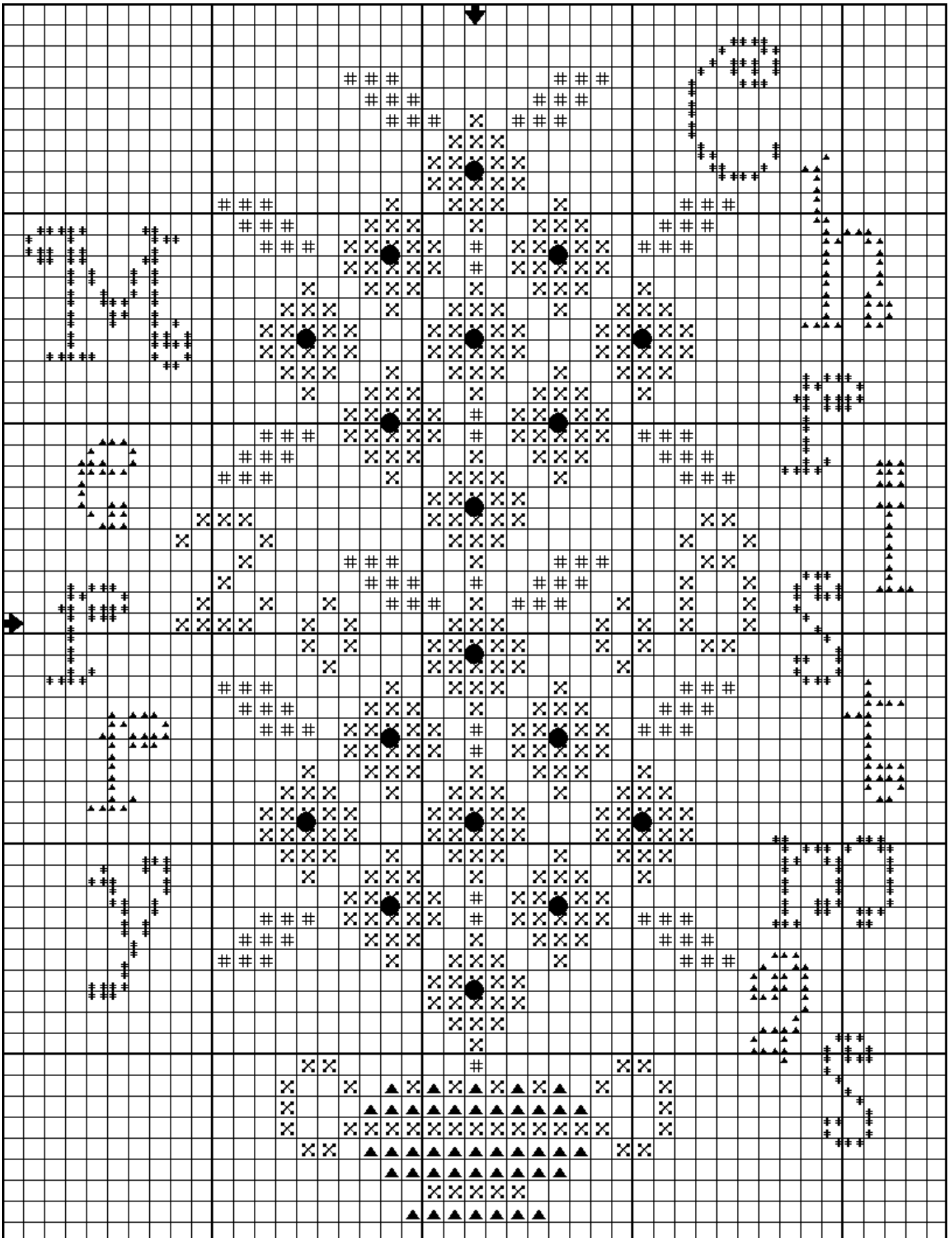
## Finishing Idea for Pine Glen Designs Chart

The designs have been finished into little pillow ornaments with the corners rounded. The design has been repeated back and front and the two pieces are joined together by whipstitching through the cross stitch border. On the navy version Lorrie has made a beaded tassel and a hanging loop with the Mill Hill Rainbow beads. On the white version it has a white hanging loop and a beaded fringe at the bottom.





# Christmas Poinsettia Topiary Chart



# Boule De Sapin by Patrizia Martellini of The Cute Mermaid Designs



[www.thecutemermaid.it](http://www.thecutemermaid.it)

*A horn book makes a lovely idea for a Christmas ornament. Patrizia has created this Christmas ball to stitch and then mount on a horn book.*

**Total design size:** 39 x 46 stitches

## Finished Stitched Area

14/28 count: 2 3/4" x 3 1/3" (7 x 8.5 cm)

16/32 count: 2 1/2" x 2 7/8" (6 x 7.5 cm)

18/36 count: 2 1/6" x 2 1/2" (5.5 x 6.5 cm)

20/40 count: 2" x 2 1/3" (5 x 6 cm)

Allow an extra 2" on each side for finishing.

## Model Information

Fabric: DMC Aida 14 count

Iridescent #3823

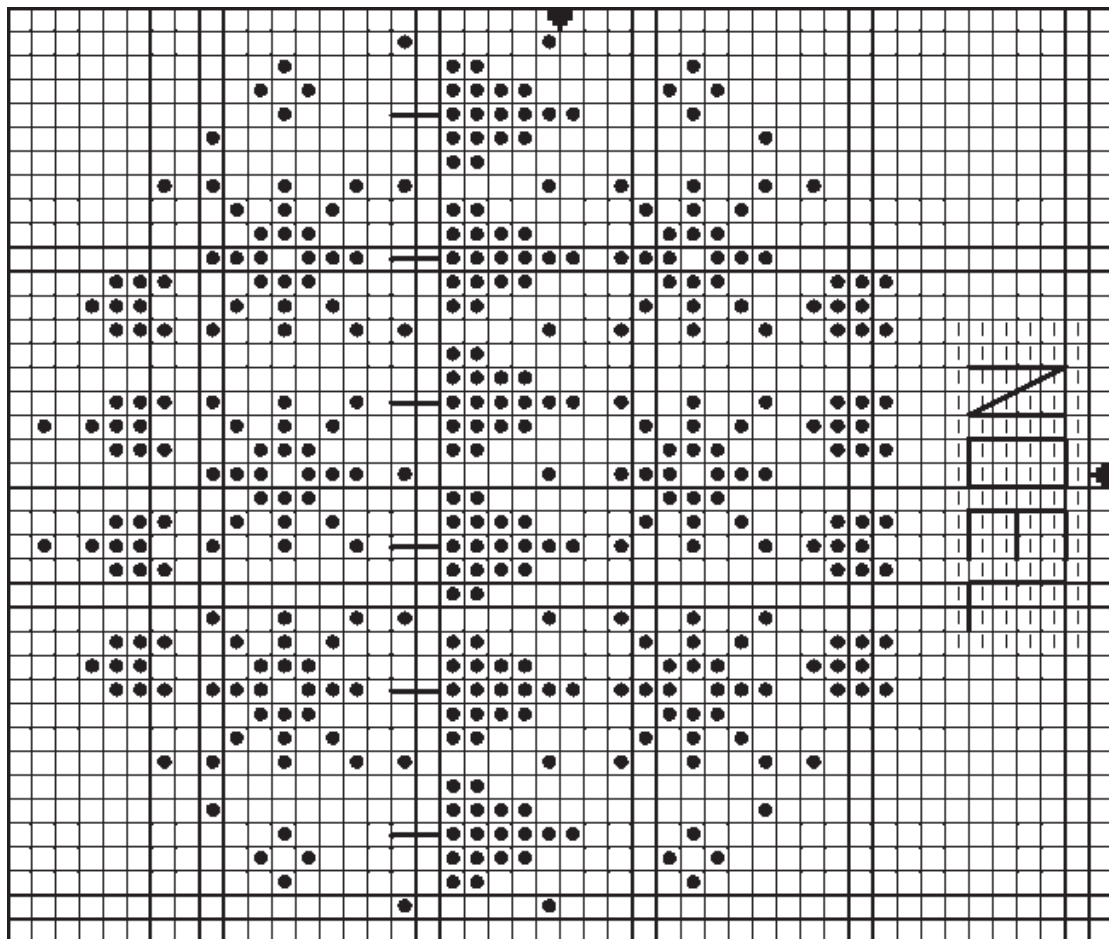
Threads: Fruits Rouges from L'Atelier du Pic Vert (six stranded hand dyed cotton). Patrizia says you can also use: Caron Waterlilies 025 Holiday, ThreadworX 1085 Christmas Time or DMC 4200.

## Stitching Instructions

1. Start stitching from the centre of the chart in the centre of your fabric.
2. Stitch all cross stitches with two ply of thread over one square. See model information.

## Finishing Idea

To finish this ornament into a horn book you will need a wooden horn book with a paddle measuring 4" x 4 1/2". Stretch the stitched piece over a piece of cardboard and glue to the horn book. Patrizia has added a twisted cord around the edge and tied the ends into a bow.





# A Merry Christmas by Barbara Westhoven of West Wind Cross Stitch Designs

Two regency ladies are dancing on this lovely ornament designed by Barbara Westhoven.

**Total design size:** 42 x 46 stitches

## Finished Stitched Area

14/28 count: 3" x 3 1/3" (7.5 x 8.5 cm)

16/32 count: 2 5/8" x 2 7/8" (6.5 x 7.5 cm)

Allow an extra 3" on each side for finishing.

## Model Information

Fabric: 32 count linen, Lambswool from Wichelt

Threads: DMC six stranded cotton

## Symbol Key

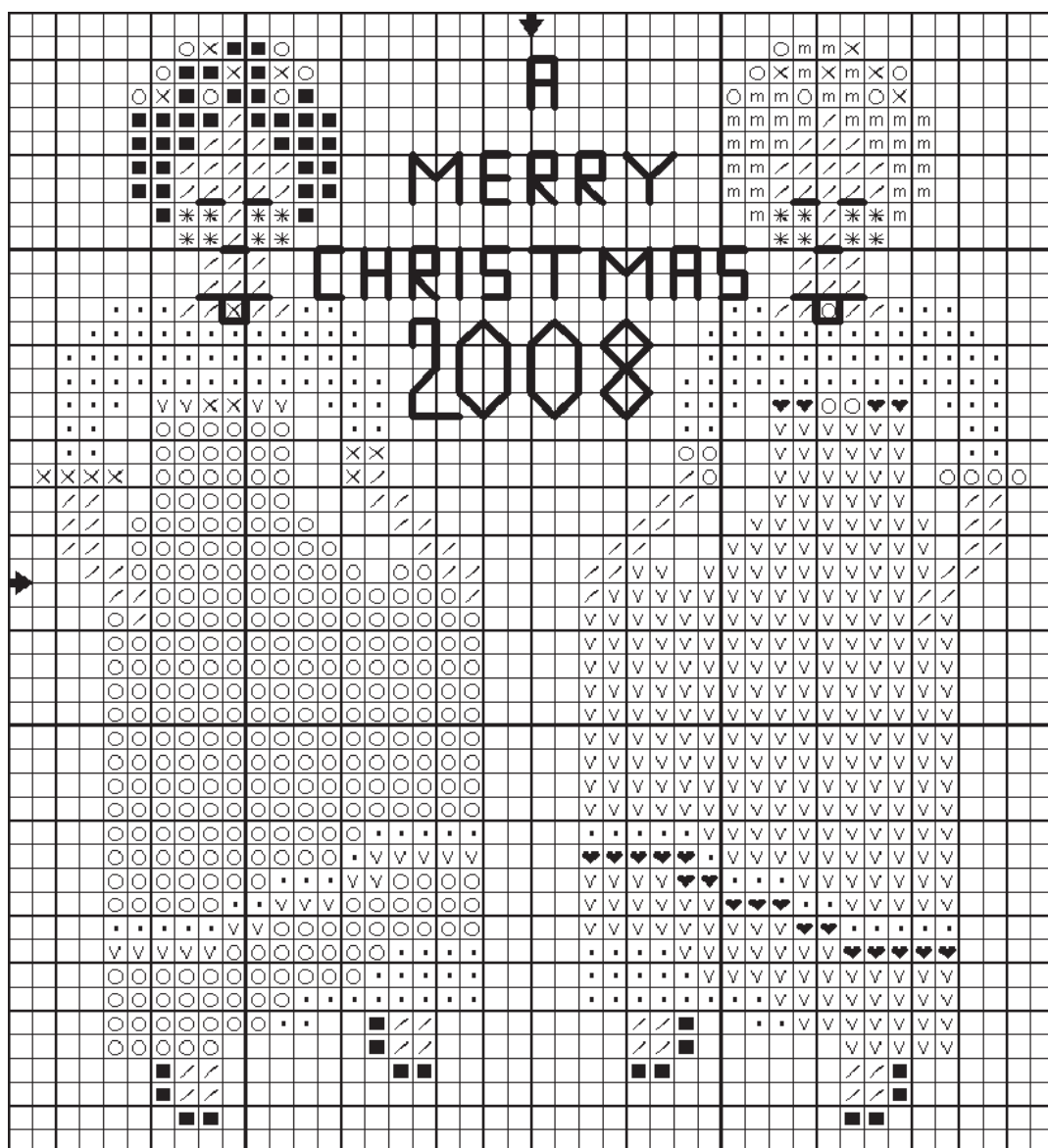
Symbol	DMC	Ply
V	319	2
X	320	2
○	498	2
*	761	2
♥	814	2
/	950	2
■	3371	2
m	3852	2
.	Ecu	2

## Stitching Instructions

1. Start stitching from the centre of the chart in the centre of your fabric.
2. Stitch all cross stitches with two ply of thread according to the symbol key.
3. Backstitch with one ply of thread:
  - a) Eyes: DMC 3371
  - b) Mouths: DMC 498
  - c) Lettering: DMC 319

## Finishing Idea

Barbara has turned her design into a round padded board ornament with piping trim, a satin green ribbon bow and hanger, and co-ordinating backing fabric. Only the stitched piece is stretched over cardboard. The backing is just cut to size and glued.



# Gianluca's Stocking

(Wood Stocking Collection #5)

## by Sofia Cornali of Giulia Punti Antichi

*This stocking is dedicated to Gianluca, Sofia's cousin, who is recovering from a scaring disease and has been such a wonderful boy in fighting against his illness and helping his family and his doctors.*

**Total design size:** 48 x 59 stitches

### Model Information

Fabric: T06-01 Trinkets(TM) by Token and Trifles Redefined, Inc.

Threads: The Thread Gatherer Silk 'N Colors (TGSNC), Stitches and Spice Sampler Threads (SSST) and Stranded Cotton (SSSC), and Kreinik Metallic Fine Braid (KB).

### Stitching Instructions

1. Cross stitch over two holes according to the symbol key.
2. Backstitch over two holes with one ply:
  - a) Outside border of stocking in SSSC Midnight Magic
  - b) The five diagonal backstitches of the upper section of toe in KB 018 #8.
3. Work the Upright Double Cross stitches as follows:
  - a) Work with one ply of SSST Into The Blue in the [B] and [C] sections.
  - b) Work with one ply of TGSNC Stiletto Sidewalk, the flower between leaves in the [E] section.
  - c) Work with one ply of SSST Into The Blue, SSSC Midnight Magic in the [C] section. Thin lines represent Into The Blue and thick lines represent Midnight Magic.
4. Work Triple Cross stitch with one ply of SSSC Midnight Magic in the [A] section.



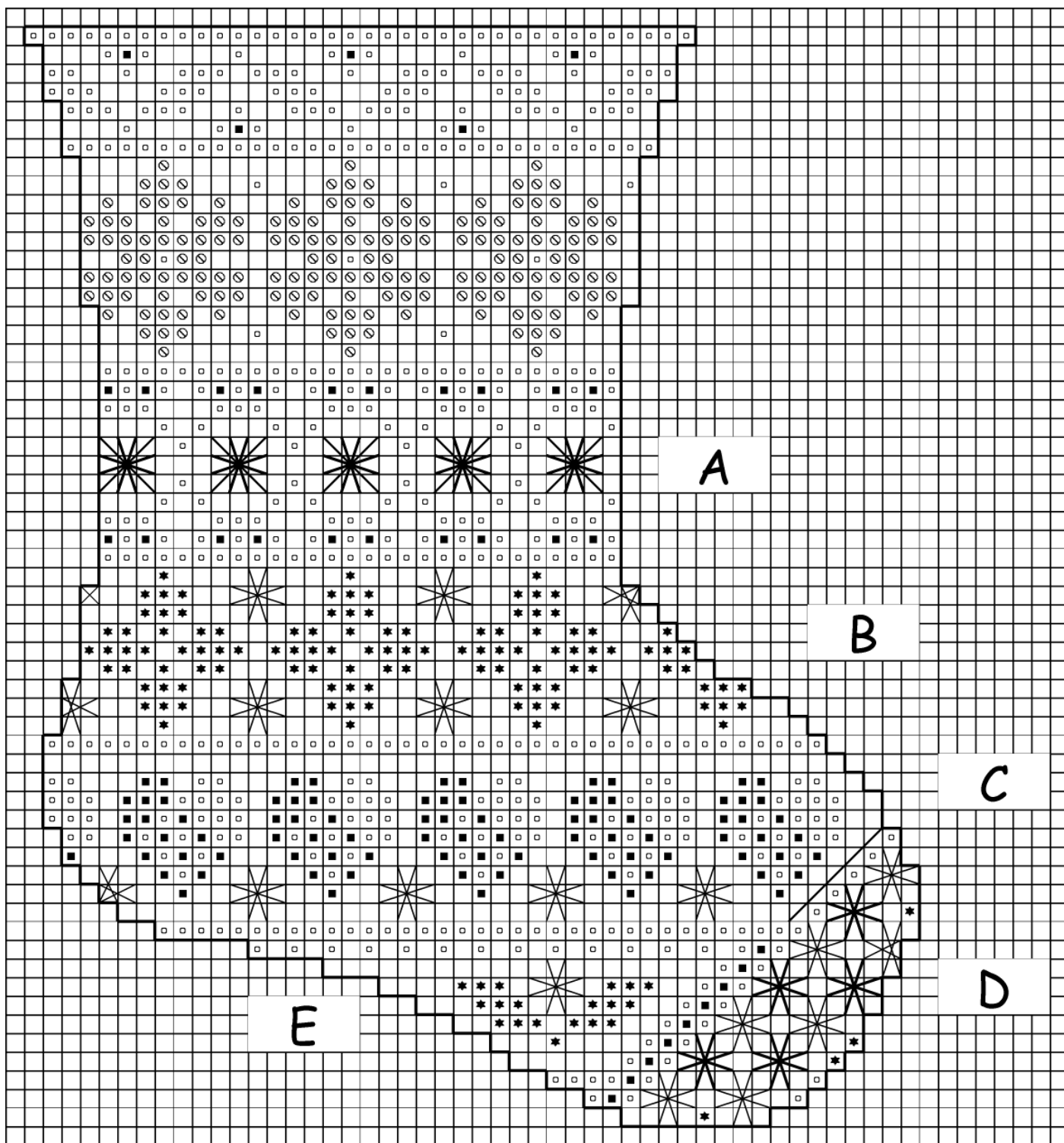
### Symbol Key

Symbol	Thread	Ply	DMC
o	TGSNC Stiletto Sidewalk 269	2	4210
★	SSSC Midnight Magic	2	4240
⊗	SSST Into The Blue	1	4020+162
■	Kreinik 018 Fine #8 Braid	1	-

The finishing idea is on the next page.



# Gianluca's Stocking Chart



## Finishing Idea

Sofia has mounted the stocking onto a stocking thread keeper from Bloom Woodworks.  
([www.bloomwoodworks.com](http://www.bloomwoodworks.com))

Refer to the information listed in the Trinkets (TM) package to cut out and use stocking template. Once the sewing card is removed, keep the border as a template for cutting out the felt stocking. Once the stitching is completed, apply a thin layer of glue on felt stocking and

lay the paper stocking over the felt stocking. Press both sections together and let them dry. Apply a thin layer of glue to the felt side of stocking. Centre on the wooden thread keeper, press firmly and let it dry.

Make two cords; one to hang the ornament and the other for attaching a tassel to the bottom. Make a tassel from the leftover thread.

*The Token and Trifles Trinket (TM) and wood keeper can be purchased from Mani di Donna.*  
([www.manididonna.it](http://www.manididonna.it))

# Peppermint Paul by Helga Mandl Designs

*Paul's Christmas wish came true and he got a bag full of peppermints! Why don't you make a wish and watch it come true too!*

**Total design size:** 40 x 51 stitches

## Finished Stitched Area

14/28 count: 2 5/8" x 3 2/3" (7.5 x 9.5 cm)

16/32 count: 2 1/2" x 3 1/4" (6.5 x 8 cm)

18/36 count: 2 1/4" x 2 5/6" (5.5 x 7 cm)

20/40 count: 2" x 2 1/2" (5 x 6.5 cm)

Allow an extra 2" on each side for finishing.

## Model Information

Fabric: 16 count Dark Moss Aida from Zweigart

Threads: DMC six stranded cotton

Other: Mill Hill glass seed beads (MHGSB)

## Symbol Key

Symbol	DMC	Ply
●	310	2
◇	321	2
^	740	2
◆	829	2
7	943	2
⊞	963	2
⊞	4050	2
=	4070	2
C	4160	2
	4200	2

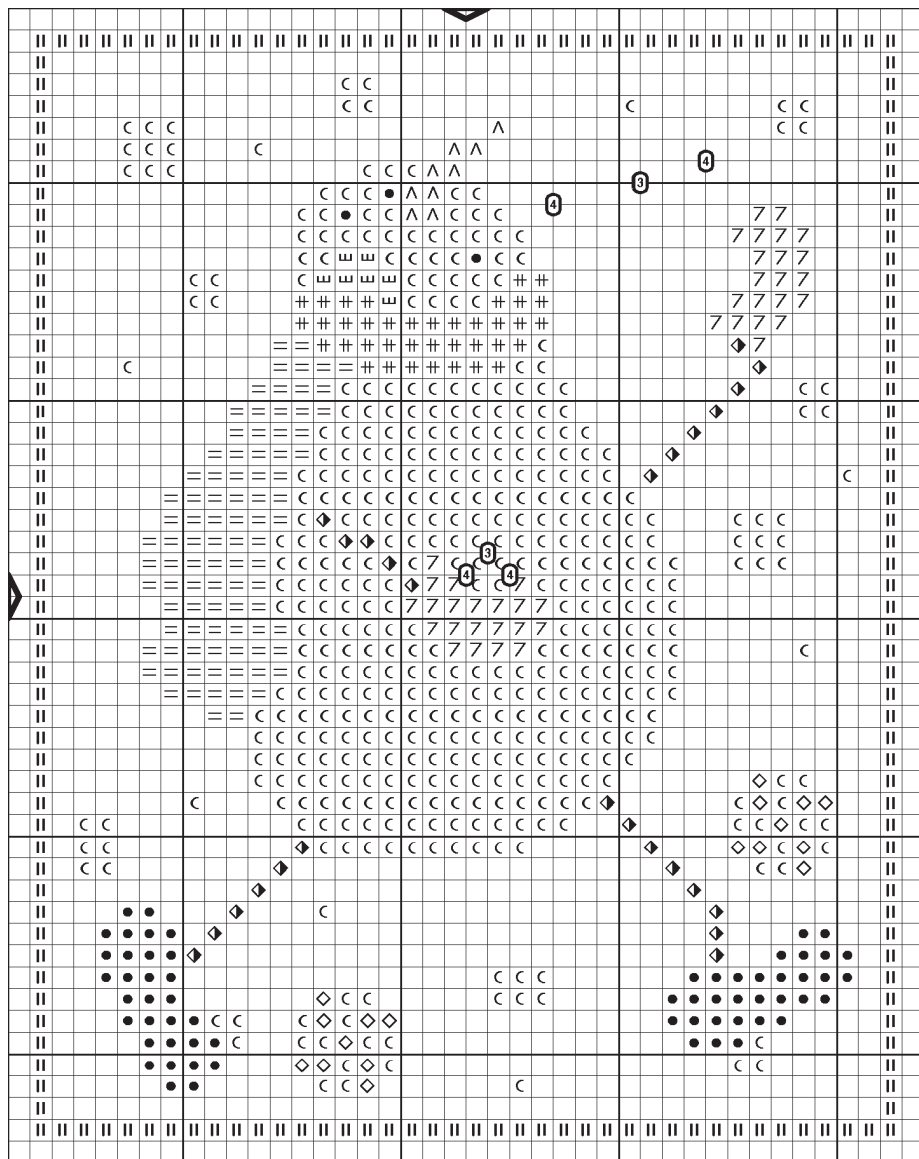
Symbol	Bead
3	MHGSB 40479 White
4	MHGSB 42013 Red

## Stitching Instructions

1. Start stitching from the centre of the chart in the centre of your fabric.
2. Stitch all cross stitches according to the symbol key.
3. Attach beads with one ply of matching thread.

## Finishing Idea

Helga has finished her ornament into a small pillow with a bead tassel and a twisted cord around the edge.





# X-Moose Ornament

## by Meg Thompson

### Shinall of the Flower Thread Company

*Here's a festive quick ornament to brighten your holidays! Variegated pearl cotton gives the moose extra pizzazz, metallic floss catches the eye and beads along the edge add that extra pop!*

**Total design size:** 40 x 51 stitches

#### Finished Stitched Area

25/12.5 count: 3 1/4" x 4" (8 x 10.5 cm)

14/28 count: 2 7/8" x 3 2/3" (7.5 x 9.5 cm)

16/32 count: 2 1/2" x 3 1/6" (6.5 x 8 cm)

18/36 count: 2 1/4" x 2 5/6" (5.5 x 7 cm)

20/40 count: 2" x 2 1/2" (5 x 6.5 cm)

Allow an extra 2" on each side for finishing.

#### Model Information

Fabric: 25 count Dublin linen, White

Threads: Anchor Pearl Cotton (A) and DMC six stranded metallic thread.

#### Stitching Instructions

1. Start stitching from the centre of the chart in the centre of your fabric.
2. Stitch all cross stitches according to the symbol key.
3. Complete the border in Chain stitch with one ply of Ginnie Thompson Flower Thread, Green 427.

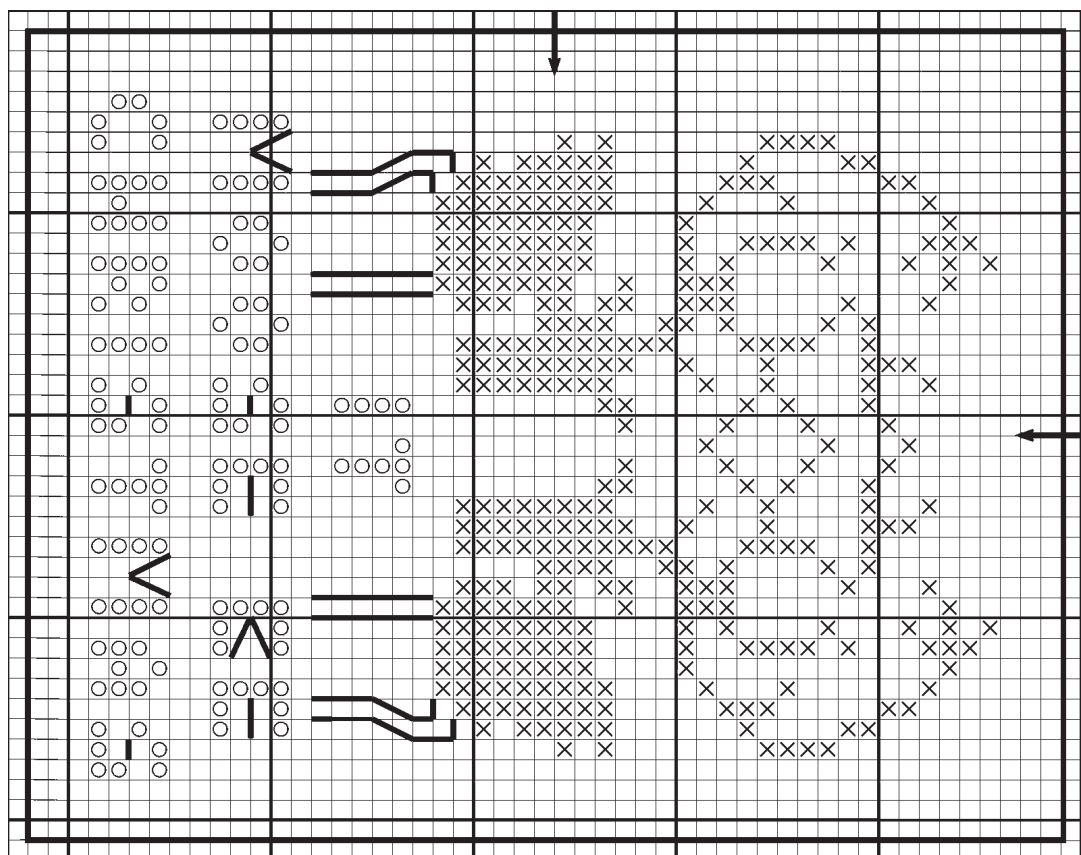
#### Symbol Key

Symbol	Thread
x	A Pearl Cotton 8 #1206 (1 ply)
o	DMC #5269 (2 ply)

#### Finishing Idea

Meg has finished this cute ornament into a small pillow. The edge has been decorated with Mill Hill Antique seed beads #03049. For easy illustrated finishing instructions, go to:

[www.flowerthread.com/chainstitch](http://www.flowerthread.com/chainstitch)



# Christmas Tree In Blue by Cathie Richardson of Country Garden Stitchery

Cathie has created this sweet blue Christmas tree.

**Total design size:** 44 x 48 stitches

## Finished Stitched Area

14/28 count: 3 1/8" x 3 1/2" (8 x 8.5 cm)

16/32 count: 2 3/4" x 3" (7 x 7.5 cm)

Allow an extra 3" on each side for finishing.

## Model Information

Fabric: 28 count hand dyed linen,  
Stormy Gray #76505 from Wichelt  
Imports.

Threads: DMC six stranded cotton  
and Kreinik braid

Other: Mill Hill Glass Seed Beads

## Symbol Key

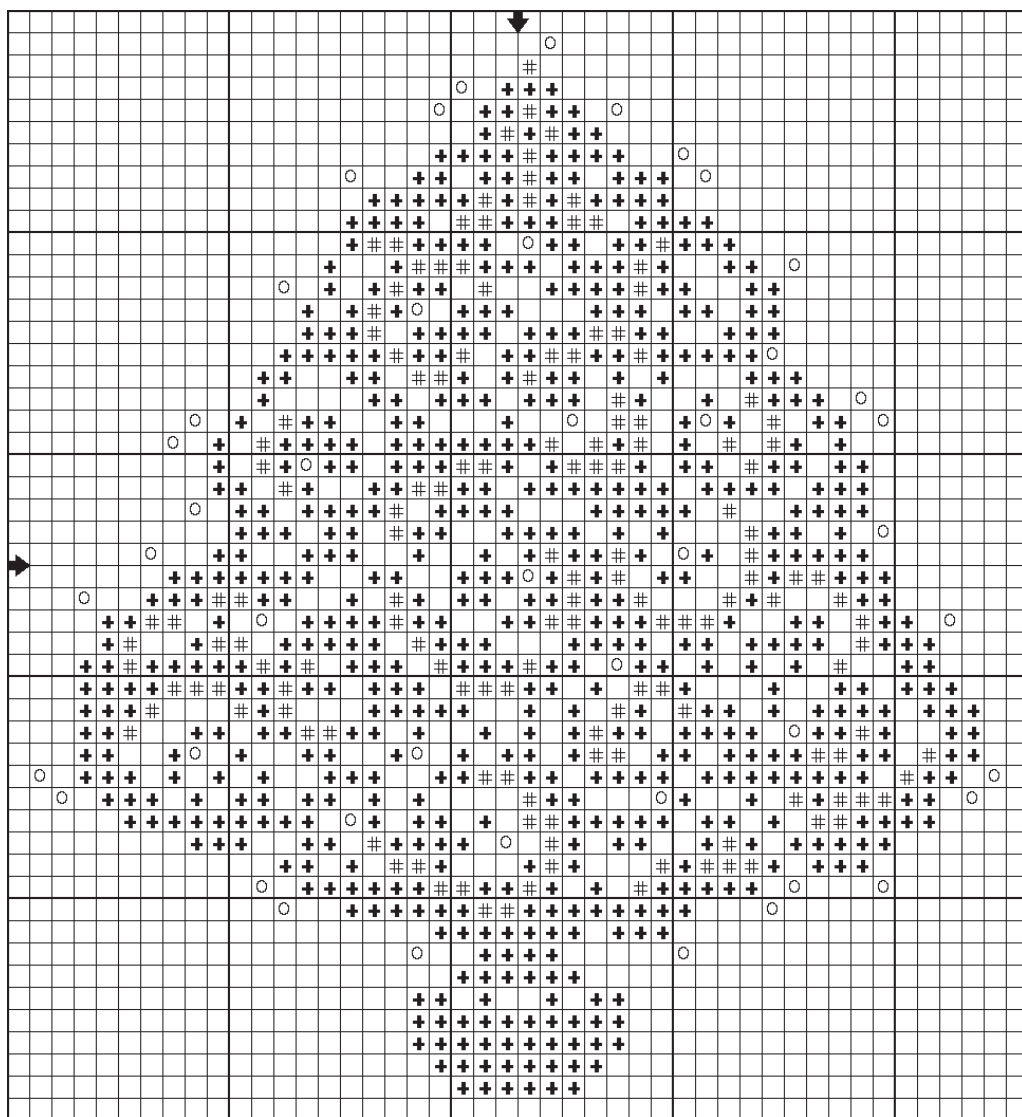
Symbol	Thread
+	DMC 4240 (2 ply)
#	Kreinik Braid #4 9294, Periwinkle (1 ply)
0	MHGSB #02006, Ice Blue

## Stitching Instructions

1. Start stitching from the centre of the chart in the centre of the fabric.
2. Stitch all cross stitches according to the symbol key.
3. Attach beads with one ply of matching thread.

## Finishing Idea

Cathie has created a flat Christmas tree ornament. You will need a small piece of co-ordinating fabric to back the stitching and a blue ribbon bow.





# Noel 2008 by Marie-Chantal Lord of Macha Creations

Marie-Chantal's ornament is inspired by her first adventure into the world of antique samplers. A kit will be available for this design. Please see the Macha Creations link below.

**Total design size:** 50 x 49 stitches

## Finished Stitched Area

14/28 count: 3 1/2" (9 cm) square

16/32 count: 3 1/8" (8 cm) square

Allow an extra 2" on each side for finishing.

## Model Information

Fabric: 28 count Monaco, White

Threads: Six stranded hand dyed thread from Weeks Dye Works (WDW) and Gentle Art Sampler Thread (GAST).

## Stitching Instructions

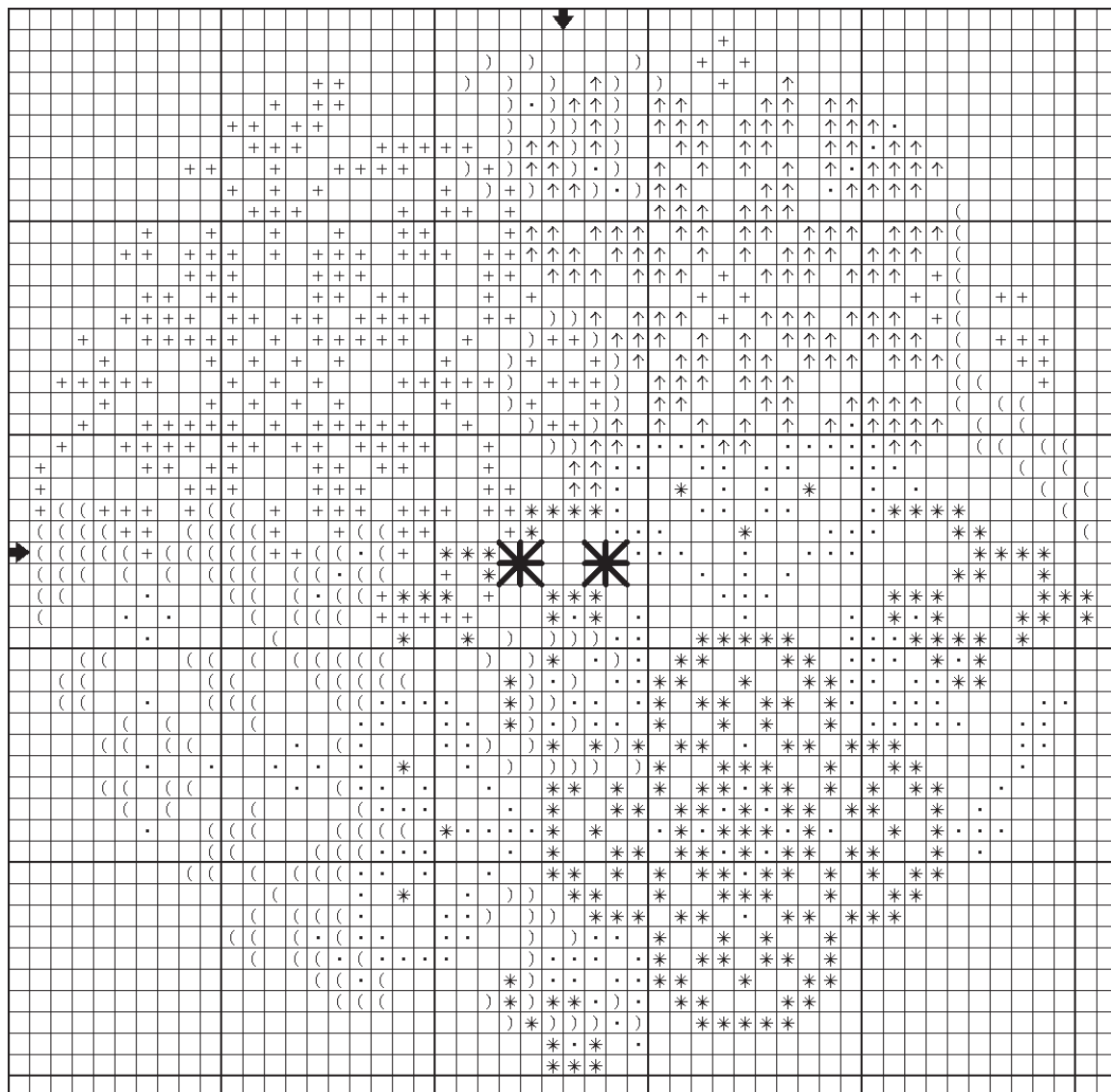
1. Start stitching from the centre of the chart in the centre of your fabric.
2. Stitch all cross stitches according to the symbol key.
3. Complete the Algerian Eyelets with one ply of GAST Raspberry Parfait. See page 50 for stitch diagrams.

## Symbol Key

Thread	Ply
• WDW Baby's Breath	2
+ WDW Rose Quartz	2
↑ GAST Sea Spray	2
( GAST Cornflower	2
) GAST Raspbt Parfait	2
* GAST Lav Potpourri	2

## Finishing Idea

Marie-Chantal has turned this lovely design into a round padded ornament. It has a twisted cord edge and a ribbon bow at the bottom with two bells attached.



# Dolphin Dance by Lorrie Ramsay of Pine Glen Designs



[www.pineglen designs.com](http://www.pineglen designs.com)

Those of you that enjoy Christmas by the sea can have a pair of dancing dolphins on your tree. Lorrie has put a lot of detail into the finishing of these ornaments and she has allowed for either a white or navy ornament. See page 27 for finishing ideas.

**Total design size:** 54 x 40 stitches

## Finished Stitched Area

14/28 count: 3 7/8" x 2 7/8" (10 x 7.5 cm)

16/32 count: 3 3/8" x 2 1/2" (8.5 x 6.5 cm)

Allow an extra 2" on each side for finishing.

## Model Information

Fabric: 28 count Jobelan white or navy from Wichelt.

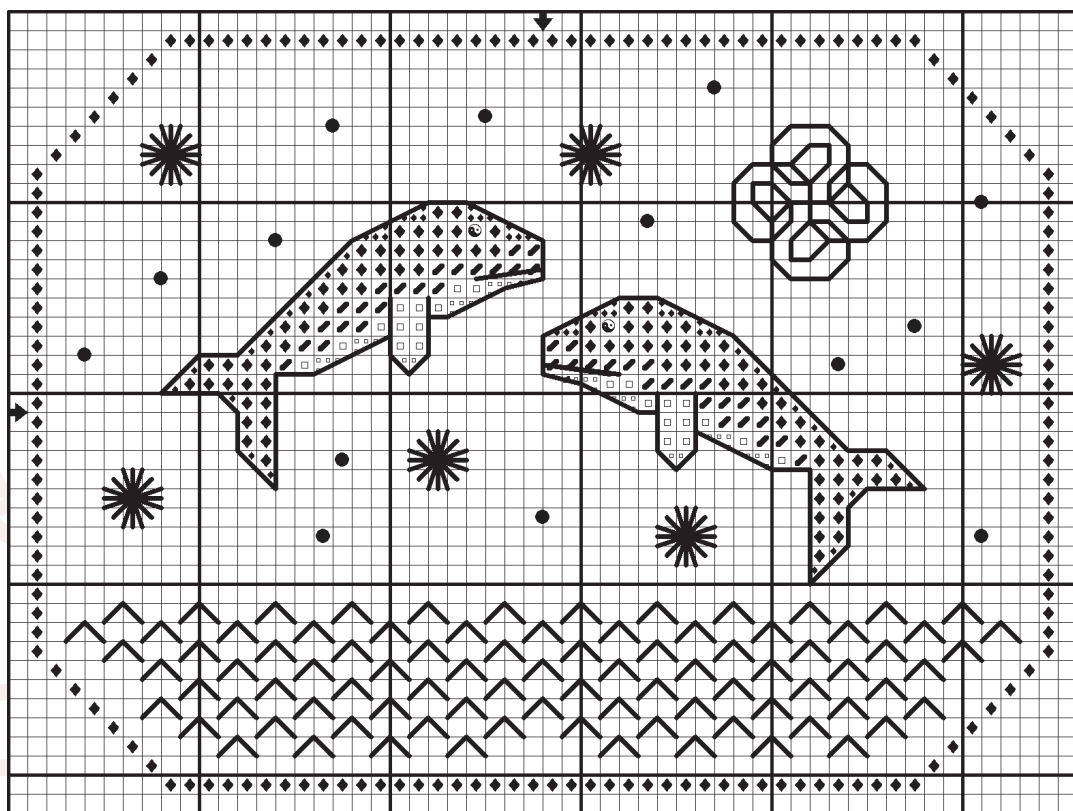
Threads: DMC six stranded cotton and metallic thread, Kreinik Braid and Mill Hill glass seed beads.

## Symbol Key

Symbol	White	Navy
□	DMC 322	DMC 3325
◼	DMC 803	DMC 775
◆	DMC 939	DMC B5200
●	MHGSB #00374	MHGSB 00478
◎	MHGSB #00479	MHGSB 00374

## Stitching Instructions

1. Start stitching at the centre of the chart in the centre of your fabric.
2. Stitch all cross stitches according to the symbol key with two ply of thread. In the symbol key there are two choices; one for stitching on white and one for stitching on navy.
3. On the white version, complete all backstitching with one ply of DMC 939.
4. On the navy version, complete the backstitches around the dolphins with one ply of DMC 334. Complete the rest of the backstitches with DMC B5200.
5. Attach beads with one ply of matching thread according to the symbol key.
6. Complete the Rhodes Octagon with two ply of Kreinik Braid #8 018HL, Navy on the white version. See page 50 for stitch diagram.
7. On the navy version, complete the Rhodes Octagon with two ply of DMC E5200.





# Cubic Christmas Ornament by Virginie Lykins

*Virginie Lykins has created this unique cube ornament. She is French and lives in Norway and the different languages on the ornament are a nice reminder that Christmas and stitching is close to the hearts of many stitchers all over the world.*

**Total design size:** 72 x 106 stitches

## Finished Stitched Area

14/28 count: 5 1/8" x 7 1/2" (13 x 19 cm)

16/32 count: 4 1/2" x 6 2/3" (11.5 x 17 cm)

Allow an extra 2" on each side for finishing.

## Model Information

Fabric: 14 count white Aida

Threads: DMC six stranded cotton

Other: Mill Hill Glass Seed Beads

## Stitching Instructions

1. Start stitching from the centre of the chart in the centre of your fabric.
2. Stitch all cross stitches according to the symbol key.
3. Complete all backstitches with one ply of DMC 310.
4. Complete all inner backstitch borders with one ply of DMC 349 except the square which says, "Merry Christmas". Do that one with one ply of DMC 986.
5. Complete the main backstitched border (the one around each square) with two ply of DMC White.
6. Complete French Knots (above Christmas and Noel) with one ply of DMC 310.
7. Attach Mill Hill Glass Seed Bead #00557 where you see a round circle symbol on the chart.

## Finishing Idea

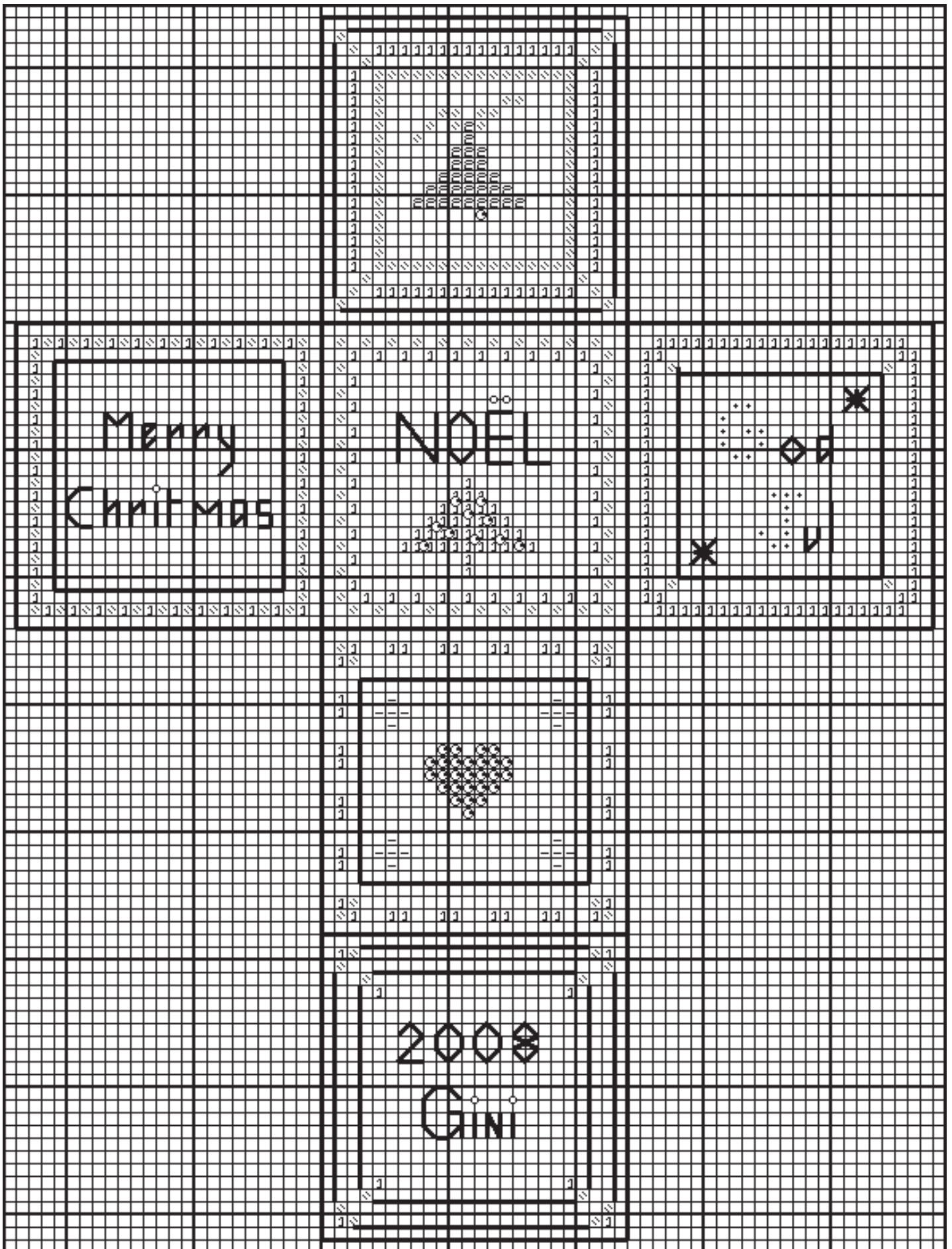
To turn the ornament into a cube, trim the design to a 1/4" seam allowance. The seam should follow the 't' shape of the design. You may want to apply a fray stopper to the edges. Fold the seam inwards along the white backstitch border. Crease the white backstitched lines inside the design. Join each side together to form a cub shape by whipstitching through the white backstitches. Leave a small opening for stuffing and inserting a cord for hanging. Virginie attached a tiny tassel from the leftover thread for the bottom.



## Symbol Key

Symbol	Ply	Thread
+	2	DMC 310
\\	2	DMC 349
1	2	DMC 986
-	2	DMC 743
2	2	DMC 869

# Cubic Christmas Ornament Chart





# Little Christmas Lamp by Wal D'Champs of WDC Designs

*This lovely lamp ornament is nicely weighted with a beaded tassel.*

**Total design size:** 96 x 39 stitches

## Finished Stitched Area

14/28 count: 6 7/8" x 2 5/6" (17.5 x 7 cm)

16/32 count: 6" x 2 1/2" (15.5 x 6 cm)

18/36 count: 5 1/3" x 2 1/6" (13.5 x 5.5 cm)

Allow an extra 2" on each side for finishing.

## Model Information

Fabric: 18 count Aida, White

Threads: DMC six stranded cotton

Other: An assortment of green and red beads and green leaf beads (see model photo).

## Stitching Instructions

1. Measure in 2" from the top left corner and stitch the backstitch border with two ply of DMC 304.
2. Complete all cross stitches according to the symbol key.

## Finishing Instructions

1. Trim stitched piece so a 1/2" seam following the shape of the design.
2. Starting at the top edge of the ornament, finger press the seam allow along the backstitched line towards the back.
3. Join the top edges together by whipstitching through the backstitched lines.
4. Cut a short length of red ribbon, knot the ends together and push the loop through the top of the ornament. This will be the hanger.
5. Now finger press the bottom edges inwards and sew them together as you did the top.
6. Stuff the ornament through the side opening, then stitch the opening closed.
7. Embellish the edges of the ornament with the assortment of green and red beads. Create clusters of red beads as the corners and top and attach a green leaf bead there as well. See model photo for placement.
8. Wal also made a beaded tassel and attached this to the bottom of the ornament.

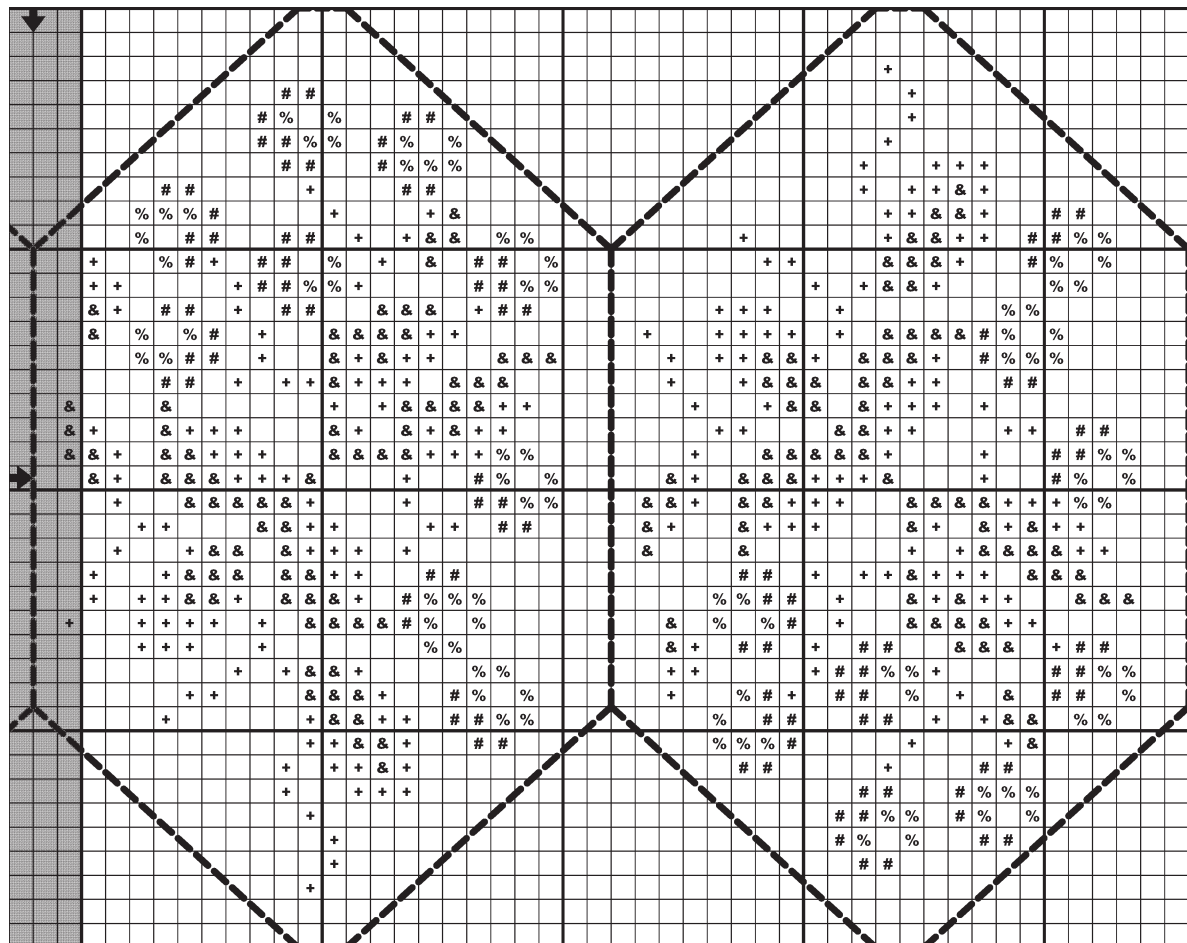
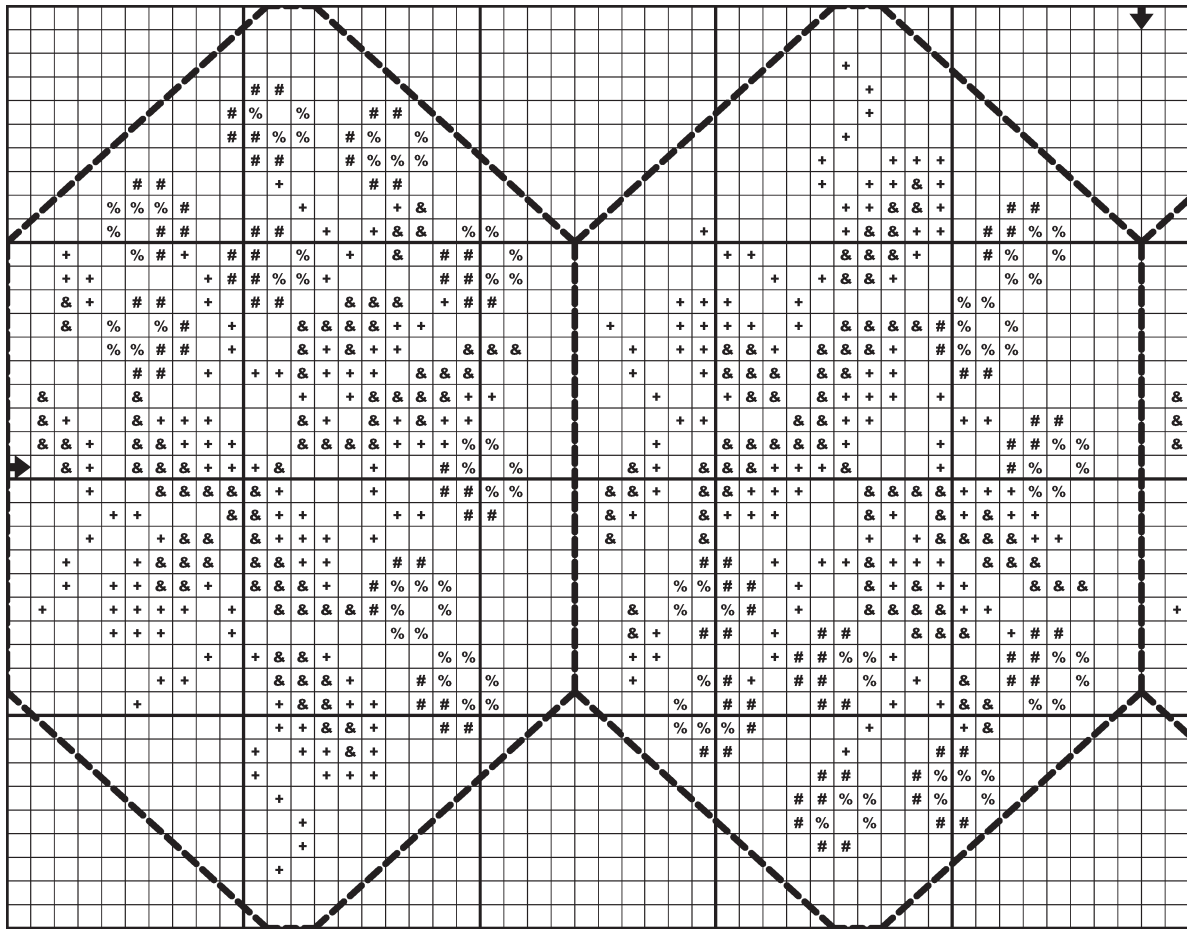


## Symbol Key

Symbol	Ply	Thread
#	2	DMC 321
%	2	DMC 3705
&	2	DMC 699
+	2	DMC 907



# Little Lamp Ornament Chart





# Gingerbread House Ornament

## by Olive Dyck of Olive Hope Design

*It's snowing on this gingerbread house! It's next to a tall pine tree with a cute candy cane letterbox.*

**Total design size:** 46 x 43 stitches

### Finished Stitched Area

14/28 count: 3 1/3" x 3" (8.5 x 8 cm)  
 16/32 count: 2 7/8" x 2 2/3" (7.5 x 7 cm)  
 18/36 count: 2 1/2" x 2 1/2" (6.5 x 6 cm)  
 20/40 count: 2 1/3" x 2 1/6" (6 x 5.5 cm)  
 Allow an extra 2" on each side for finishing.

### Model Information

Fabric: 32 count Lugana, Blueberry Delight by Silkweaver  
 Threads: DMC six stranded cotton

### Stitching Instructions

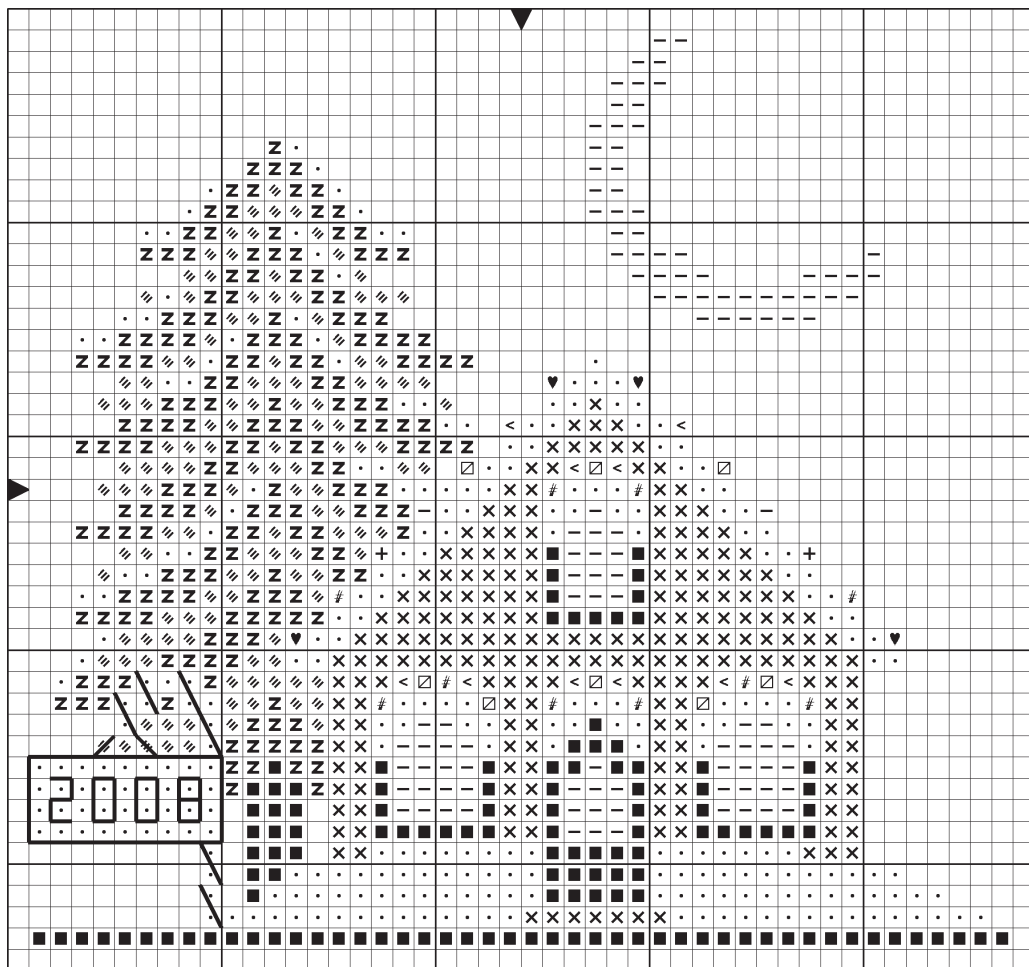
1. Start stitching from the centre of the chart in the centre of your fabric.
2. Stitch all cross stitches according to the symbol key with one ply of thread.
3. Backstitch the candy cane with one ply of DMC 321.
4. Backstitch "2008" and sign with one ply of DMC 801.

### Symbol Key

Symbol	DMC
+	208
♥	321
×	435
—	444
<	703
■	801
◻	826
#	970
Z	987
⋈	989
.	3865

### Finishing Idea

Olive has turned her design into a square padded board ornament. There is Christmas theme fabric on the back. A white cord goes around the edge and also forms the loop. The nice thing about this cord is that it has a string of small white beads twisted through it.



# Black Velvet Ornament

## by Lynne Herzberg

*Find your favourite four vintage buttons for this quick blackwork ornament from Lynne Herzberg.*

**Total design size:** 40 x 40 stitches

### Finished Stitched Area

14/28 count: 2 7/8" (7.5 cm) square

16/32 count: 2 1/2" (6.5 cm) square

18/36 count: 2 1/4" (5.5 cm) square

20/40 count: 2" (5 cm) square

Allow an extra 2" on each side for finishing.

### Model Information

Fabric: 28 count white evenweave

Threads: DMC six stranded cotton

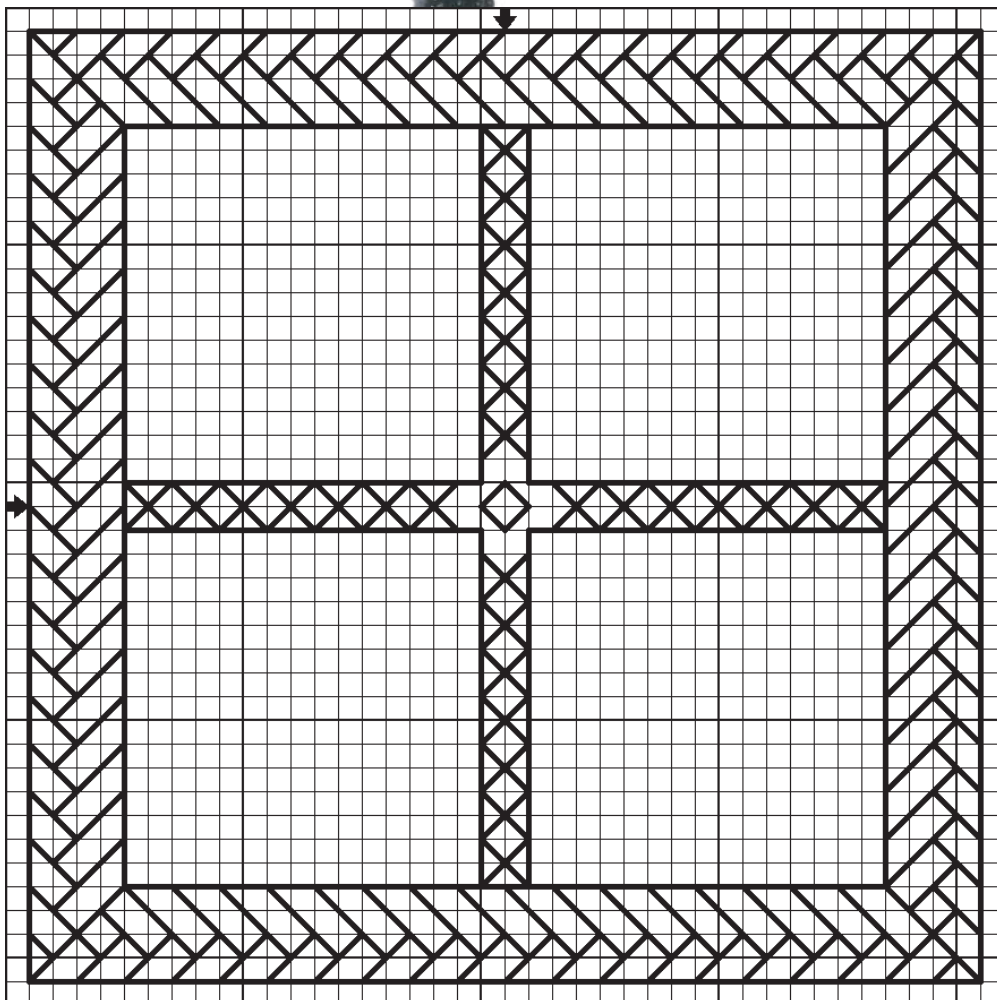
Buttons: 4 vintage round black buttons

### Stitching Instructions

1. Start stitching from the centre of the chart in the centre of your fabric.
2. Stitch all backstitch with one ply of DMC 310.
3. Attach buttons with one ply of matching thread to the centre of each square.

### Finishing Instructions

Lynne has turned this design into a square padded board ornament. The back of the ornament is black velvet. A hanging loop was made with satin black ribbon and a tassel was made with a large bead and leftover black thread.





# Prairie Schooler Santa by The Prairie Schooler

*Prairie Schooler's Santa designs are wonderful and here is one for us!*

**Total design size:** 46 x 46 stitches

## Finished Stitched Area

14/28 count: 3 1/3" (8.5 cm) square

16/32 count: 2 7/8" (7.5 cm) square

18/36 count: 2 1/2" (6.5 cm) square

20/40 count: 2 1/3" (6 cm) square

Allow an extra 2" on each side for finishing.

## Model Information

Fabric: 32 count Jobelan, Sage

Threads: DMC six stranded cotton



## Stitching Instructions

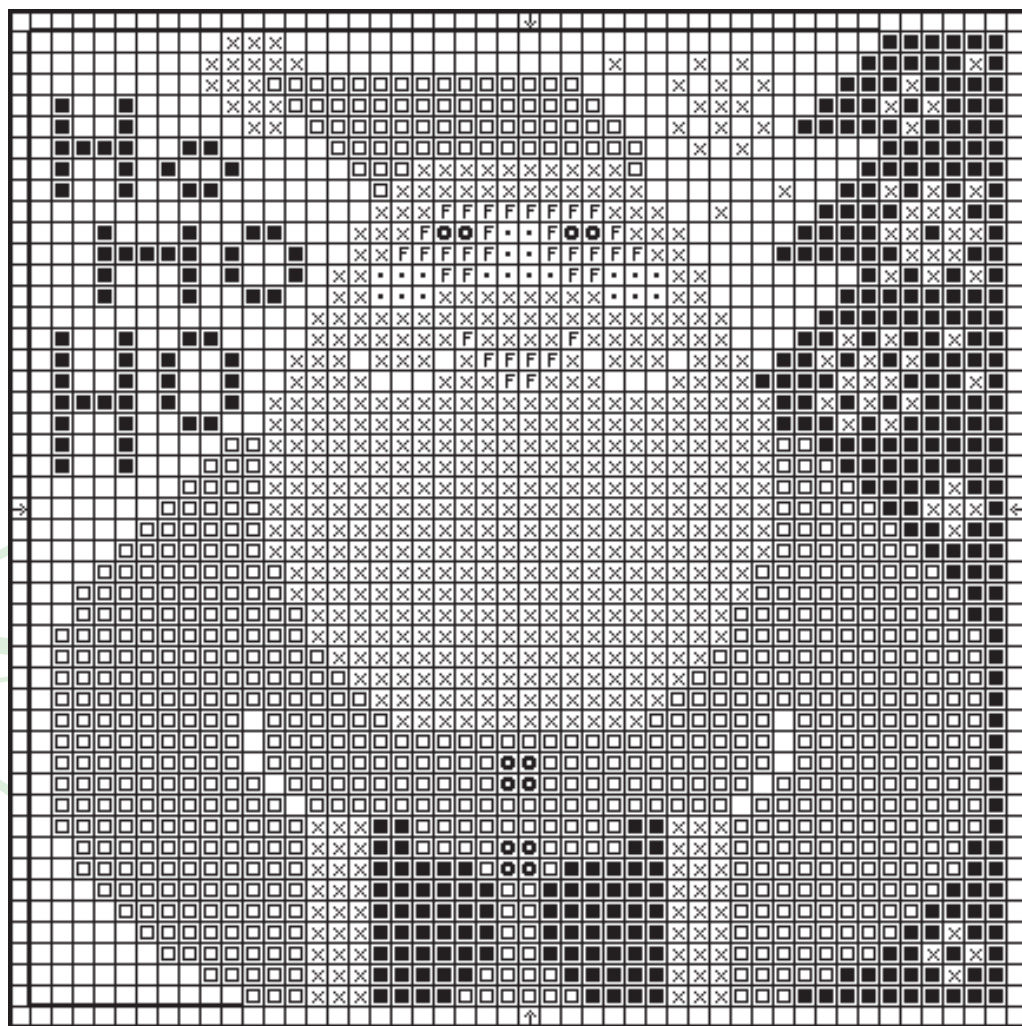
1. Complete all cross stitches according to the symbol key with two ply of thread.
2. Backstitch the border with one ply of DMC 895.

## Symbol Key

Symbol	DMC
X	White
.	356
F	758
□	815
■	895
●	3371

## Finishing Idea

The ornament has been finished into a padded board ornament with a felt backing. Stretch the stitched piece over cardboard. Cut a piece of felt a little bit bigger than the piece with pinking shears. Glue to the back. Glue some thread inbetween the layers and then it is ready to hang.



# Vintage Christmas Ornament by Thea Dueck of The Victoria Sampler

*Thea has designed an heirloom ornament in two colours and with two different centres. Aren't they beautiful?*

**Total design size:** 38 x 38 stitches

## Finished Stitched Area

14/28 count: 2 3/4" (7 cm) square

16/32 count: 2 3/8" (6 cm) square

18/36 count: 2 1/8" (5.5 cm) square

Allow an extra 2" on each side for finishing.

## Model Information #1

Mocha and Cooper - No cut hardanger

Fabric: 28 count Mocha Cashel Linen from Zweigart

## Symbols

### Materials

Trebizond TRA831, cappuccino

Kreinik #4 Braid 021, copper

DMC Floss 644

Au ver a Soie 3444, dark taupe

20 SJDPB #14, 1866H, copper hex

16 SJDGB #11, 59, platinum

1 silver coloured snowflake charm

SJDPB/GB: SJ Designs Petite Beads/Glass Beads

## Model Information #2

White and Gold with Greek Cross Weaving

Fabric: 28 count Platinum Cashel Linen from Zweigart

## Symbols

### Materials

Trebizond TRA125, white

Kreinik Silk Bella - 8000, white

Kreinik #4 Braid #002, Gold

DMC 822

20 SJDPB #14, 1805H, white hex

16 SJDGB 2mm white pearls

1 SJ Designs 2mm gold pearl

## Stitching Instructions

1. From the centre of the chart, start stitching in the centre of your fabric.
2. Cross stitch the square in the centre using two ply of the fibre marked the 'X' symbol (unless you choose to do the Hardanger centre).
3. KLOSTER BLOCKS & SATIN STITCHING: Using one ply of Trebizond, work stair stepped Kloster Blocks, Satin Stitches (square border and hearts) around the cross stitch square. When satin stitching, come up in an empty hole and bring your needle down in a filled hole.
4. ALGERIAN EYES AND BEADS: Work Algerian Eyes using one ply of the appropriate Kreinik #4 Braid. Using DMC floss 822 or 644 to match fabric, attach glass beads or pearls



within Kloster Blocks as shown.

4. BACKSTITCH FILIGREE WITH HEX BEADS: Using one strand of Au ver a Soie # 3444 (or Kreinik #4 Braid - #002 gold), backstitch filigree in corners of diamond shape. See Main Chart for placement, and attach the SJDPB, Hex with one ply of DMC 644 (DMC 822), making sure to go through the bead two times to ensure that they remain upright.
5. HARDANGER WEAVING: Cut away fabric threads so there are four horizontal and four vertical centre fabric threads left. Then, use one ply of Kreinik Silk Bella, white to weave the Greek Cross in centre. See Main Chart for placement. Attach the SJ 2mm gold Pearl in the centre.

See page 50 for stitch diagrams.

## Finishing Idea

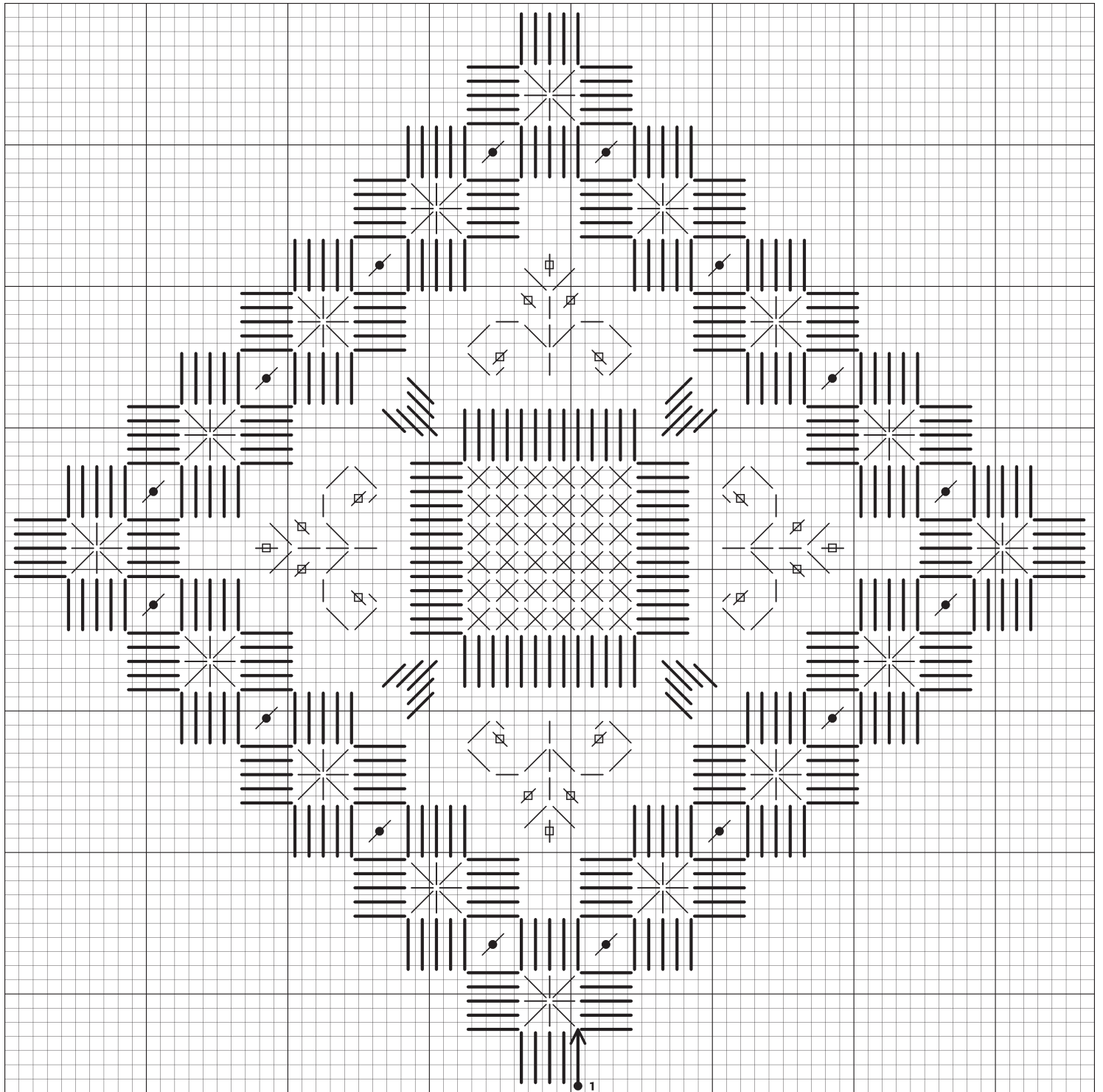
Thea has turned both of these lovely designs into padded board ornaments. They have co-ordinating fabric on the back. The twisted cord and tassels are made of the following thread: Version 1, DMC #12 Pearl Cotton 644 and version 2, DMC #12 Pearl Cotton white.



[www.victoriasampler.com](http://www.victoriasampler.com)



# *Vintage Christmas Ornament Chart*



# Peace On Earth Banner

## by Robin Laukhuf of Olde Willow Stitchery, Inc.

*This simple Christmas banner has such a profound verse. I ask that you take a minute to reflect and think of all the men and women who are fighting for freedom. Pray for their safety and for "Peace on Earth".*

**Total design size:** 46 x 155 stitches

### Finished Stitched Area

14/28 count: 3 1/3" x 11" (8.5 x 28 cm)

16/32 count: 2 7/8" x 9 2/3" (7.5 x 25 cm)

18/36 count: 2 1/2" x 8 5/8" (6.5 x 22 cm)

20/40 count: 2 1/3" x 7 3/4" (6 x 20 cm)

Allow an extra 4" on each side for finishing.

### Model Information

Fabric: 36 count Edinburgh, Spice Blend Hunter Shiraz by Stitches and Spice

Threads: Olde Willow Stitchery Threads stranded silk (OWS)

Other: Mill Hill Petite beads and Sundance seed beads.

### Stitching Instructions

1. Start stitching from the centre of the chart in the centre of your fabric.
2. Stitch all cross stitches according to the symbol key.
3. Backstitch the star's rays with one ply of OWS 15.
4. Backstitch the words and sheep tails with one ply of OWS 12.
5. Attach Mill Hill Petite Seed Beads G40123 amongst the snowflakes represented by the 'X' symbol.
6. Use whatever seed beads you have in your stash to decorate the Christmas tree. The model used the following: Sundance Beads size 14: 299I, 172, 543, 3.
7. Attach Sundance Bead size 14 422, yellow amongst the star and at the end of its rays.

### Symbol Key

Symbol	Ply	OWS	Colour Description
*	2	20	Light Brown
-	2	21	Teal Blue Green
.	2	15	Gold
♥	2	30	Ecru
△	2	12	Brown/Black



### Finishing Instructions

#### Materials Needed:

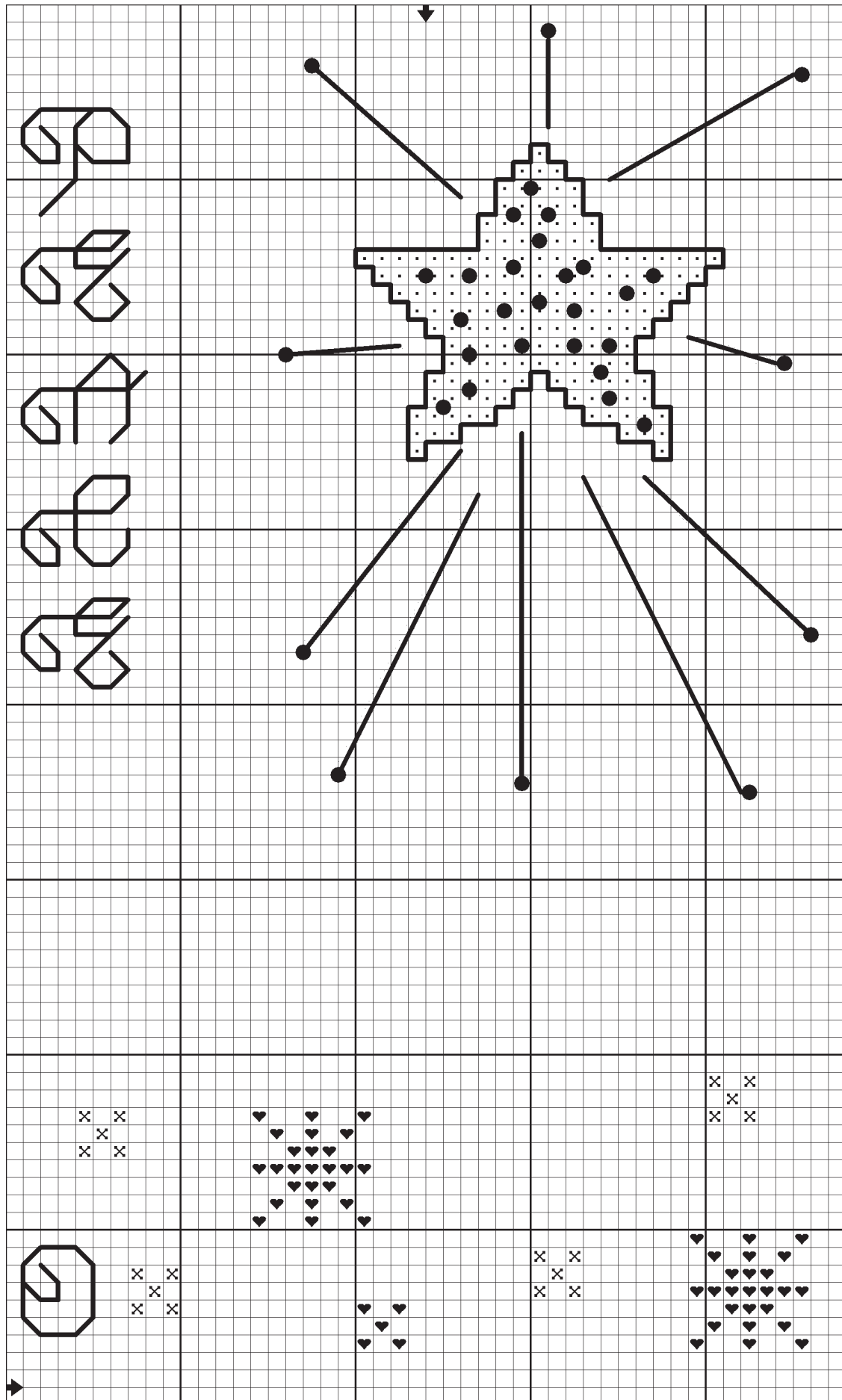
- Interlining or thin batting
  - Co-ordinating fabric for backing
  - Pins and matching sewing thread
  - Twisted cord
  - Brass Snowflake ornaments (optional-Liards.com)
1. Find the centre of the design and mark a 4" wide width from top to bottom. For the top and bottom, measure 1" above the design and mark off the triangle ends making sure they're centred over the design. Baste the outline including the triangle top and bottom. Cut a piece of backing fabric and interlining generous enough to allow a 1" border around the design.
  2. Sew the banner to the backing fabric right sides together, leaving one side unstitched.
  3. Turn the banner right side out. Slipstitch the opening closed leaving 1/2" for the cord ends.
  4. Sew cord to the edge with matching thread. The point at which the cord meets, overlap and tuck ends inside.
  5. Attach snowflake ornaments as hangers on each end.

Finishing and finishing instructions for this design are by Cheryl's Needlework Finishing. 2226 Kehrsgrrove Ct. Chesterfield, MO 63005 email: my\_finisher@hotmail.com

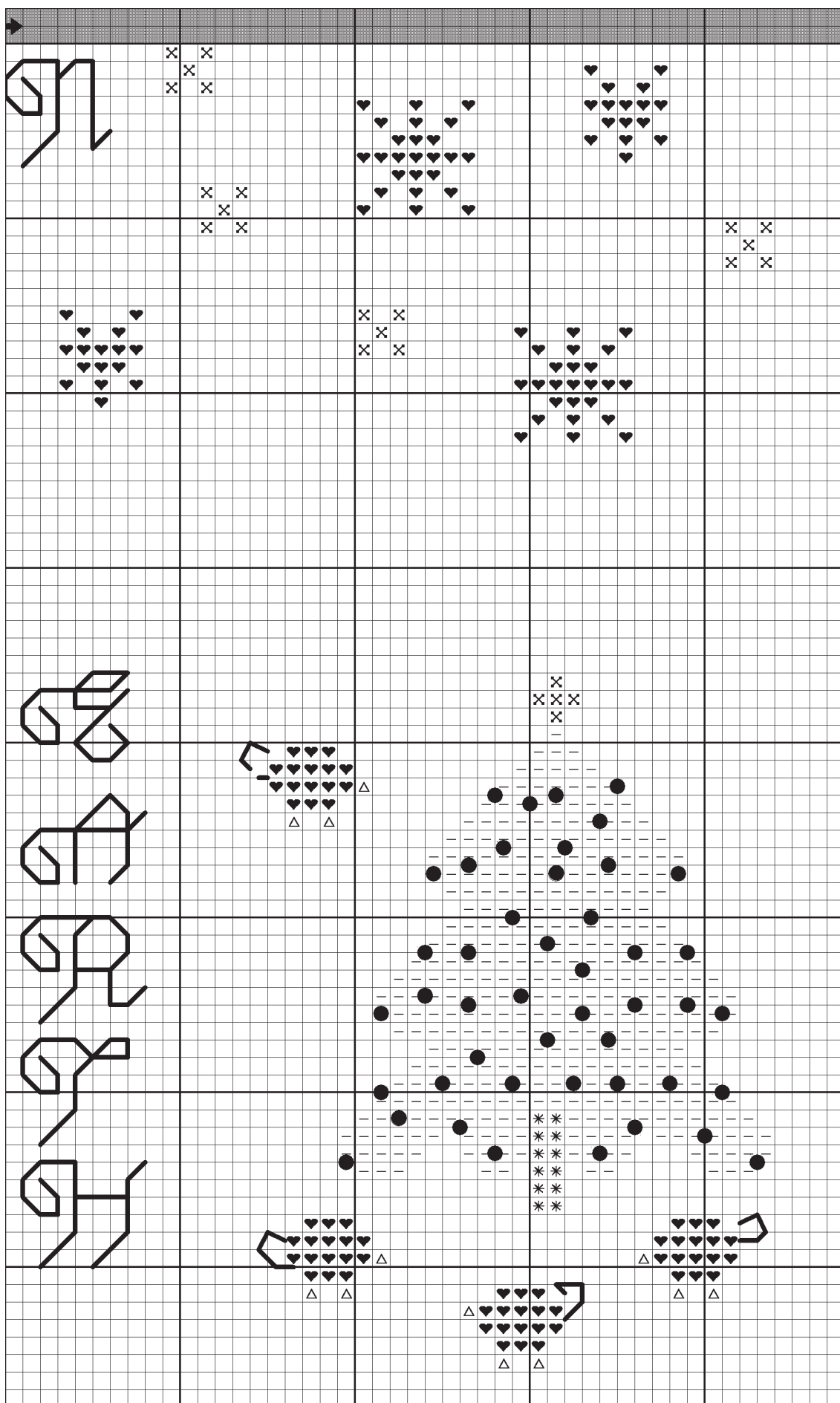




# Peace On Earth Banner Chart Top



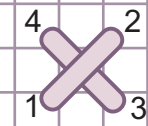
# Peace On Earth Banner Chart Bottom



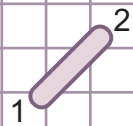


# Stitch Diagrams

Each thread you see here equals one thread on evenweave or linen fabric.  
Come up to the right side of the fabric with odd numbers, and go down with even numbers.



Cross Stitch



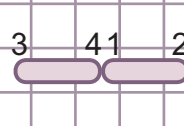
Half Stitch



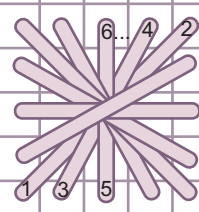
Quarter Stitch



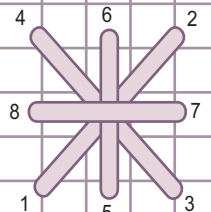
Petite Stitch



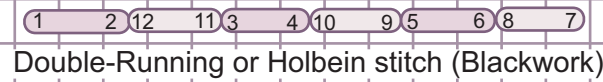
Backstitch



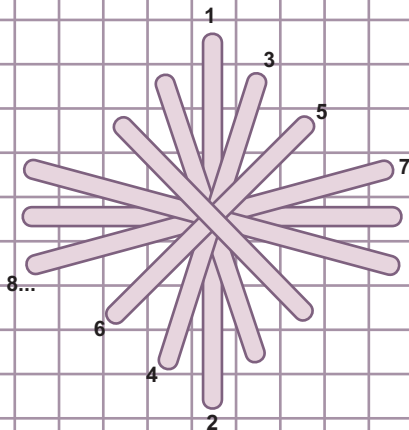
Rhodes Stitch



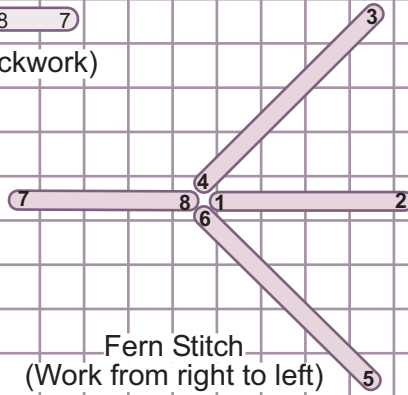
Smyrna Cross Stitch



Double-Running or Holbein stitch (Blackwork)



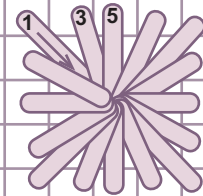
Smyrna Star



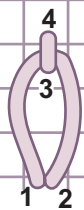
Fern Stitch  
(Work from right to left)



Algerian Eyelet  
(over 4, 8 legs)

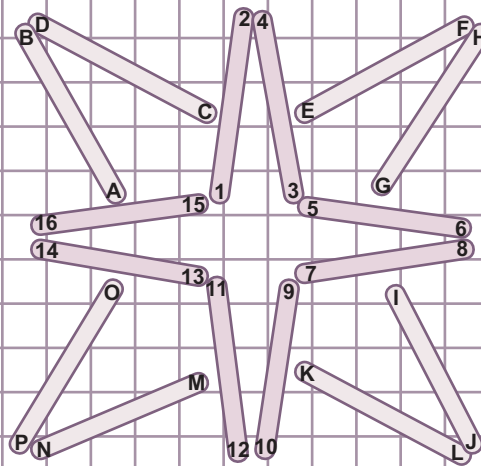


Algerian Eyelet  
(over 4, 16 legs)  
Pull each leg tight to form a centre hole.)

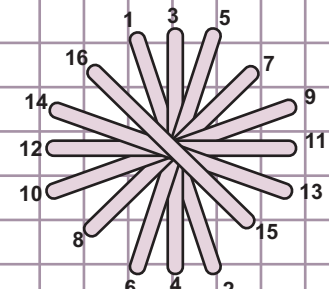


Chain Stitch

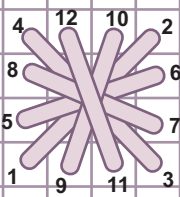
Bring the needle up at 1, go down at 2 forming a loop, come up at three through the top of the loop, pull so the loop sits on top on the fabric but not too tight. To end, couch the end of the top loop with a small straight



Christmas Flower  
(Complete the numbers first then complete the letters.)

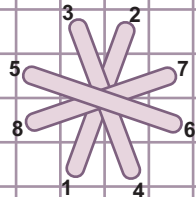


Rhodes Octagon



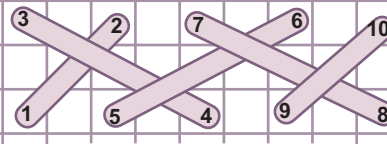
Triple Cross

One square equals one hole on the Trinket (TM) perforated paper.

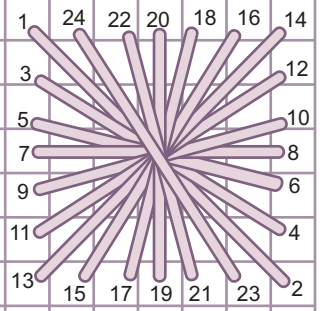


Upright Double Cross

One square equals one hole on

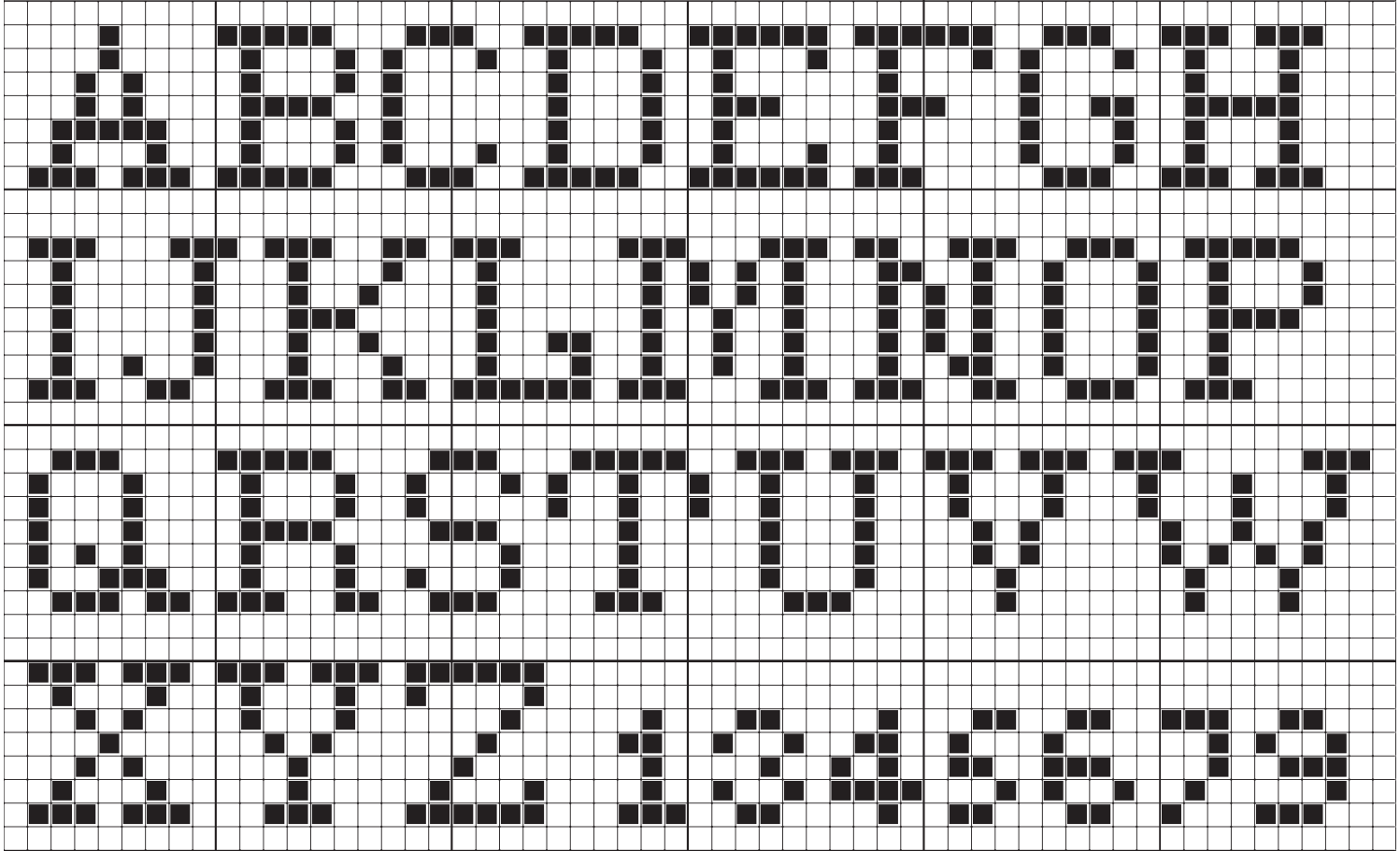


Herringbone Stitch



Rhodes Stitch (over six)

# Friendship Ornament Alphabet Chart



**This is the last page and a nice one at that!**

Our next issue is Issue 35 December 2008. Our feature designer is Janie Hubble of The Cats Whiskers Design Studio, we interview Muriel Brunet, we explore Bargello embroidery and of course, a couple more Christmas ornaments!

This magazine has been written in Australasian English.  
Thank you to everyone who has contributed to this issue.

Any queries regarding this publication should be submitted to the Editor:

The Gift of Stitching Pty Ltd  
Kirsten Edwards  
33 Waterford St, Kellyville Ridge, NSW 2155  
Australia  
[editor@thegiftofstitching.com](mailto:editor@thegiftofstitching.com)

See our website for information regarding advertising. We now sell subscriptions wholesale to retailers. To find out more please contact [sales@thegiftofstitching.com](mailto:sales@thegiftofstitching.com)

**COPYRIGHT:** The Gift of Stitching Pty Ltd 2006-2008

All patterns in this issue have been published with permission from the designers. This magazine is under copyright. It is illegal to republish or distribute in print or electronically either in part or whole.