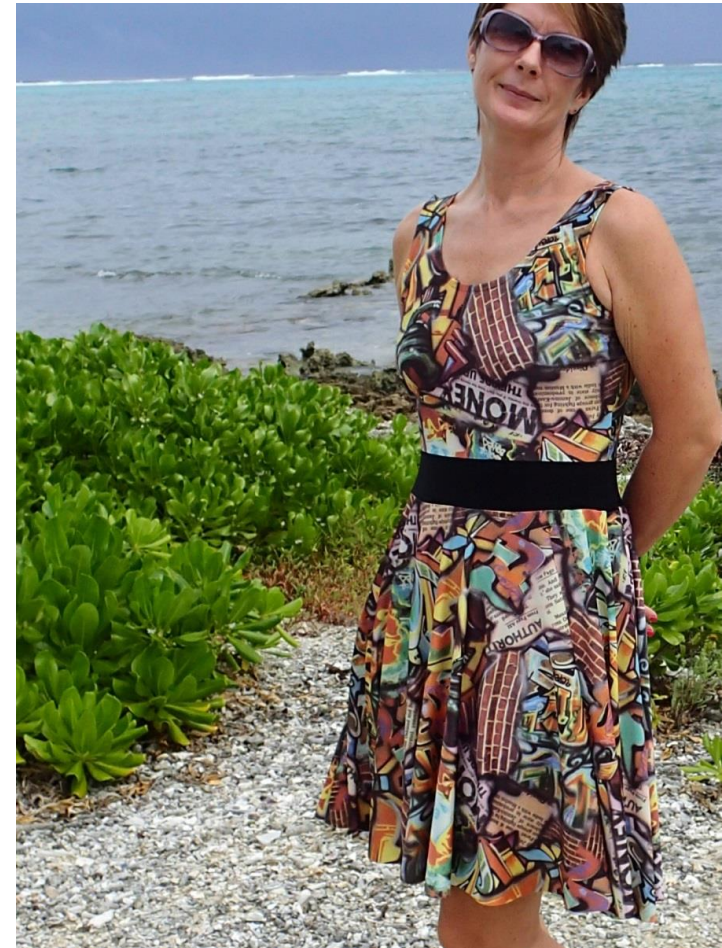


# So Sew Easy

## Graffiti Dress

### Features:

- Quick and easy to sew
- Pick your own skirt length
- Center back seam to help get a nice fit
- Sleeveless with narrow shoulders and slightly cut out armholes front and back
- Sizes 29- 41 bust, 33-45+ inch hips
- For knit fabrics only – I used an ITY knit with plenty of stretch
- Full video tutorial
- Step by step sewing checklist



**More pictures and the full step by step photo sewing instructions for this dress can be found on So Sew Easy [here – SEWING INSTRUCTIONS](#)**

## Skill level –Confident Beginner

You can find a range of useful sewing tutorials and videos at So Sew Easy – [tutorials page](#). Experience in sewing with knits/stretch fabric would be useful.

**Please read through all of these instructions before starting your project and cutting your fabric.**

## To print your PDF pattern

Your pattern and instructions come as one file to make printing easy. Please make sure you are using the latest version of Adobe for best results. You can [download the latest version here](#) if you need to.

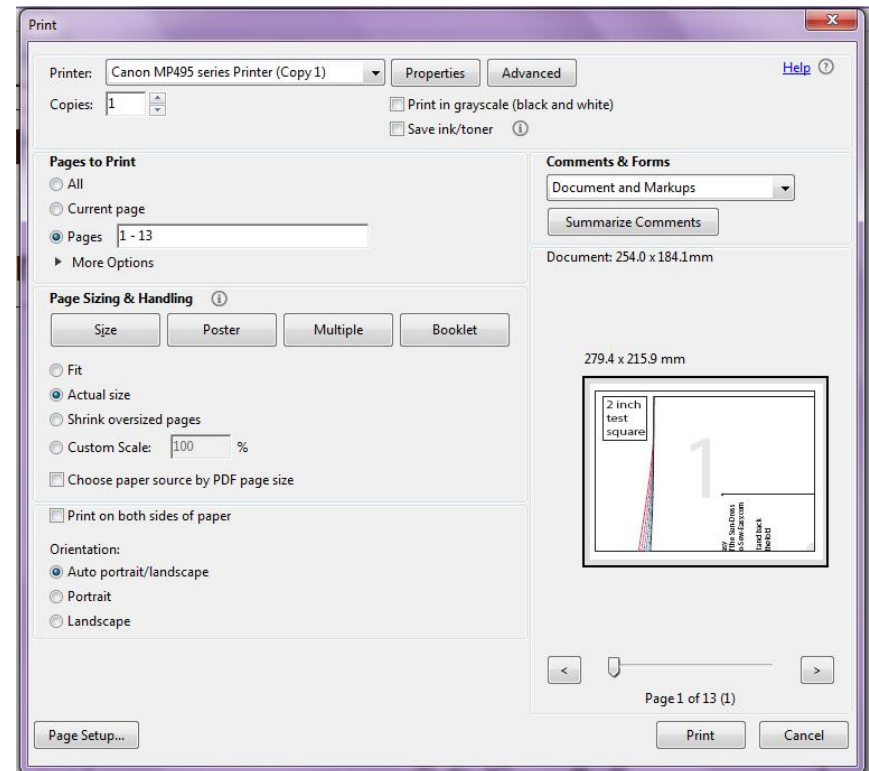
This pattern comes as a Layered PDF file which means you can select the size you want to print and hide the others. If this is your first time with a layered PDF file, you can read a full step by step photo tutorial on how to use it here:

[How to print just your size in a layered PDF file](#)

To select the layers you want to see and print, go over to the menu with little icons on the left hand side. Pick the icon that looks like one sheet of paper on top of the other – that is the layers tool. Now you can see all of the separate layers in your pattern. These will correspond to your sizes.

There is one layer that has all of the ‘fixed’ information on it, such as the test square, size chart, pattern piece names and descriptions and so on. In our pattern, this is called ‘**Print for all sizes**’. Then there are the size layers, one layer for each size. Next to the layers is a little icon that looks like an eye. You can click the eye to turn each layer on and off, so you can see it, or not see it. Pick your size and turn off the eye from all the other layers, except the Print for all Sizes layer.

Up at the top menu, select File, then Print and up comes the print preview box.



Find more great sewing patterns at So Sew Easy – <http://so-sew-easy.com>



Make sure you have selected Actual Size as the print option so that there isn't any scaling of the pattern. **Don't** select Fit to page or Shrink Oversized Pages. You can use the arrows under the preview on the right to see all of the pages.

**You can print the lot including the pattern and instructions, or if you want, just print the pattern pieces at the end of these instructions.**

### Need help with the pattern?

You can find helpful tutorials on how to download, print and assemble PDF sewing patterns here:

[How to download and print a PDF sewing pattern](#)

[How to print and assemble a PDF sewing pattern](#)

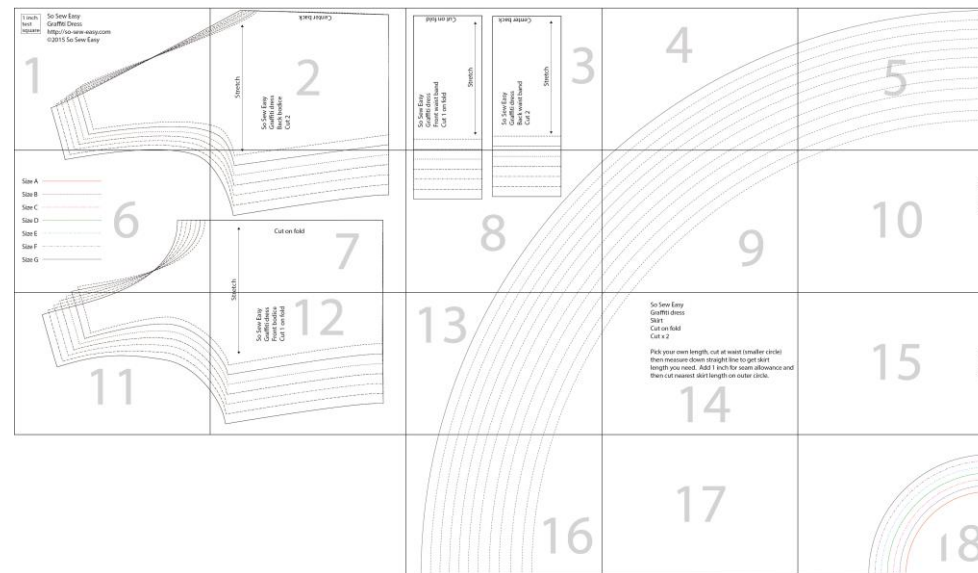
[How to print a layered PDF file](#)

### Assembling your pattern

On the top edge of page 1 is a test square. This box should measure 1 inch square. If yours is wildly different you will need to check your printer options to make sure the pages are not being resized.

Match up the pattern pieces, folding under or cutting off any overlaps, and tape together. Match up lines across pattern pieces.

Your assembled pattern should look like this: →



**The skirt lines will all print for all sizes, allowing you to pick your own length.**

If you have printed just your size, your pattern will look much simpler than that above.

### Materials needed

- Knit stretch fabric – ITY knit or similar mid-weight knit suggested
- Matching thread
- [Stretch or ball point needle](#) for knit fabrics
- Useful – [serger](#) or [Overcasting foot](#)
- Optional – [Stretch Twin Needle](#)
- Optional – [knit stay tape](#)

Find more great sewing patterns at So Sew Easy – <http://so-sew-easy.com>



## Fabric requirements and suggestions

Stretch knit fabrics with a moderate stretch. In my examples, I'm using a fairly thin ITY knit that has lots of 4 way stretch. Fabrics with different weights and stretch will affect the fit. Be aware of how much stretch in your fabric as this will affect the end result.

Assuming fabric 60 inches wide, all sizes will need 2.25 yards of fabric to make a 24 inch long skirt, or 1.75 yards to make an 18 inch skirt.

## What size do I need?

Please use this table as a guide only as although our body measurements may be similar, different body shapes may require fitting differently. Fabrics with different thickness, drape and stretch will also affect the finished result and fit on this dress, so use this table as a guide only. Compare the flat pattern measurements to your own body measurements.

The dress is close fitted at bust and waist. Use only fabrics with good crossways stretch for best fit.

Size	Bust (in/cm)	Waist (in/cm)	Hips (in/cm)
A	29 / 74	25 / 64	33 / 84
B	31 / 79	27 / 69	35 / 89
C	33 / 84	29 / 74	37 / 94
D	35 / 89	31 / 79	39 / 99
E	37 / 94	33 / 84	41 / 104
F	39 / 99	35 / 89	43 / 109
G	41 / 104	37 / 94	45 / 114

Always test the fit using the paper pattern pieces, or an inexpensive test fabric before cutting your expensive fabric for this project. If in doubt test the larger size and adjust for fitting at the seams during construction.

## Fitting tips

You can find simple fitting tips for this pattern in the video tutorial. Measure bodice length and compare to your body measurements to make sure the waist hits you in the right place.

## Directions

**Seam allowances** – 0.5 inches unless otherwise stated.

**Abbreviations used** – RST – right sides together.

**Neaten your seams** – serge/overlock your seams, or finish with your favourite method. Trim, neaten and finish seams as you go.

**Stitches to use** – if using a regular sewing machine, you may have a stretch stitch – refer to your sewing machine manual.

If not, then you can use a narrow zig-zag stitch – try a stitch length of 2.5 and a width of 0.5 or 1.0. Always test your intended stitches on a scrap of fabric before starting your project and test for stretch.

Find more great sewing patterns at So Sew Easy – <http://so-sew-easy.com>





## Let's start to sew ! (with video too)

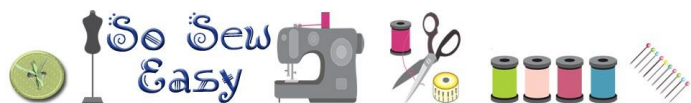
Full step by step instructions for sewing the Graffiti Dress can be found on So Sew Easy by clicking this video image below, or by visiting [THIS LINK](#).



### Handy step by step checklist

	Check the fit on your pattern and adjust as necessary. Check bodice length to waist. Check skirt length. Adjust the pattern before using it to cut your fabric.
	Join your back waistband pieces to the bodice pieces RST. Press seams towards the waist. Repeat to sew the front waistband.

	Optional but recommended. If using a lightweight or very stretchy knit fabric, consider stabilising the neckline and armhole edges with a knit stay tape to prevent wavy seams.
	Join the front of the dress bodice to the back at the shoulders, right sides together.
	Pin, sew and then press the center back seam. Start to sew ½ inch down from the top of the V-back to allow for the ½ inch neckline edge to be turned.
	Turn in the entire neckline edge 1/2 inch and stitch. Press.
	Repeat for the armholes turning in 1/2 inch to the wrong side. Press.
	Notch the center of the waist on one skirt panel and match it to the center back seam. RST, pin and stitch skirt to bodice back. Repeat for the front skirt.
	With right sides together, stitch the side seams of the dress, and press seams towards the back.
	Mark the hem length for your dress and trim if necessary.
	Turn up your hemline and finish with your favorite finish for knit fabrics. <a href="#">Using a twin needle</a> is optional.



Find more great sewing patterns at So Sew Easy – <http://so-sew-easy.com>



Now wear and enjoy your Graffiti and don't be surprised when your colleagues want to know where you bought it from :-)

How about making another – I think this would look great in contrasting fabrics. A wide contrast hem on the bottom of the skirt could look great, or how about adding ties to the waist to help mould it to your shape if you have a narrow waistline to show off. Or add a contrast narrow binding around the neckline and armholes. Lots of small variations can create lots of different looks.

Thank you for downloading this pattern. I hope you enjoyed making this project and remember that I love to see what you made so do upload your completed projects to the pattern page on Craftsy.

## Keep up with all the latest news and sewing projects at [So Sew Easy](#).

We also have a really great sewing chat group where you can ask questions, share your completed projects, and get 24 hr sewing inspiration. It's not just for So Sew Easy projects – you can chat about all sewing there, whether a newbie just starting out, or an advanced and experienced sewer, there's something for everyone in the sewing chat group. Join us here and share what you made.

### [SEWING CHAT GROUP](#)

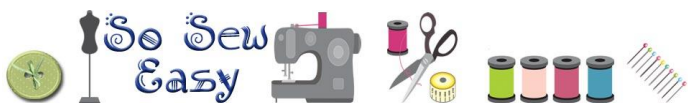
For the latest list of both free and paid patterns available, pop on over to my [designer page at Craftsy](#).

**This pattern graphic, the photos and the instructions are the design and property of So Sew Easy. Please do not copy, publish, sell, redistribute or alter them in any way. Please don't print and give to your friends, or send it to anyone by email. Please do not rebrand this work as your own and sell or give it away, even if altered. Please do not load this file to your own site or a third party site.**

**This is intended for your personal use. If you would like to recommend these instructions, please pass on the original download link at So Sew Easy. Thank you for your understanding.**

**Usage – you ARE allowed to use this pattern to make things to sell on a small handmade basis, such as for craft fairs and for your Etsy shop. If in any doubt about restrictions that apply to this pattern, please ask.**

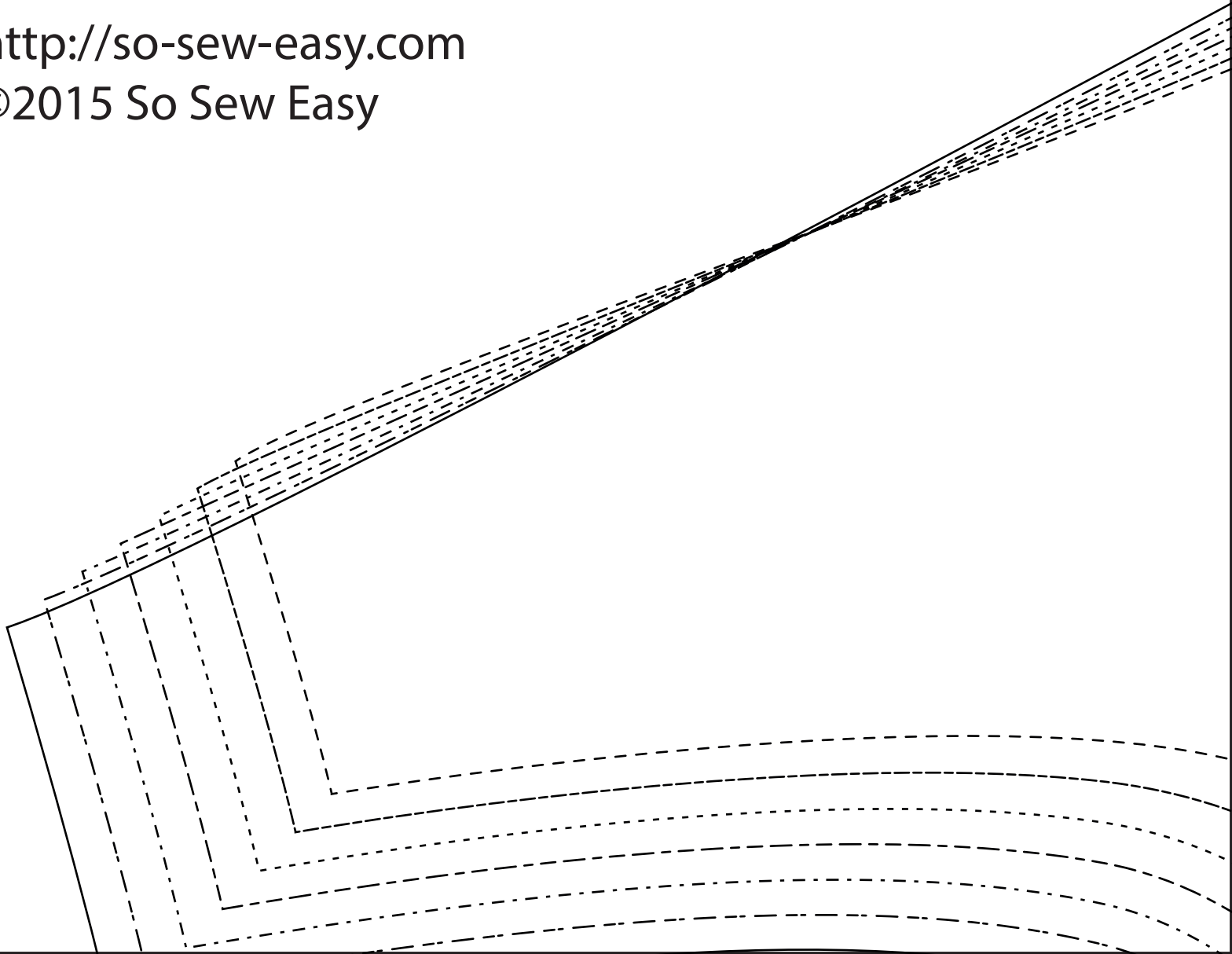
Find more great sewing patterns at So Sew Easy – <http://so-sew-easy.com>



1 inch  
test  
square

So Sew Easy  
Graffiti Dress  
<http://so-sew-easy.com>  
©2015 So Sew Easy

1



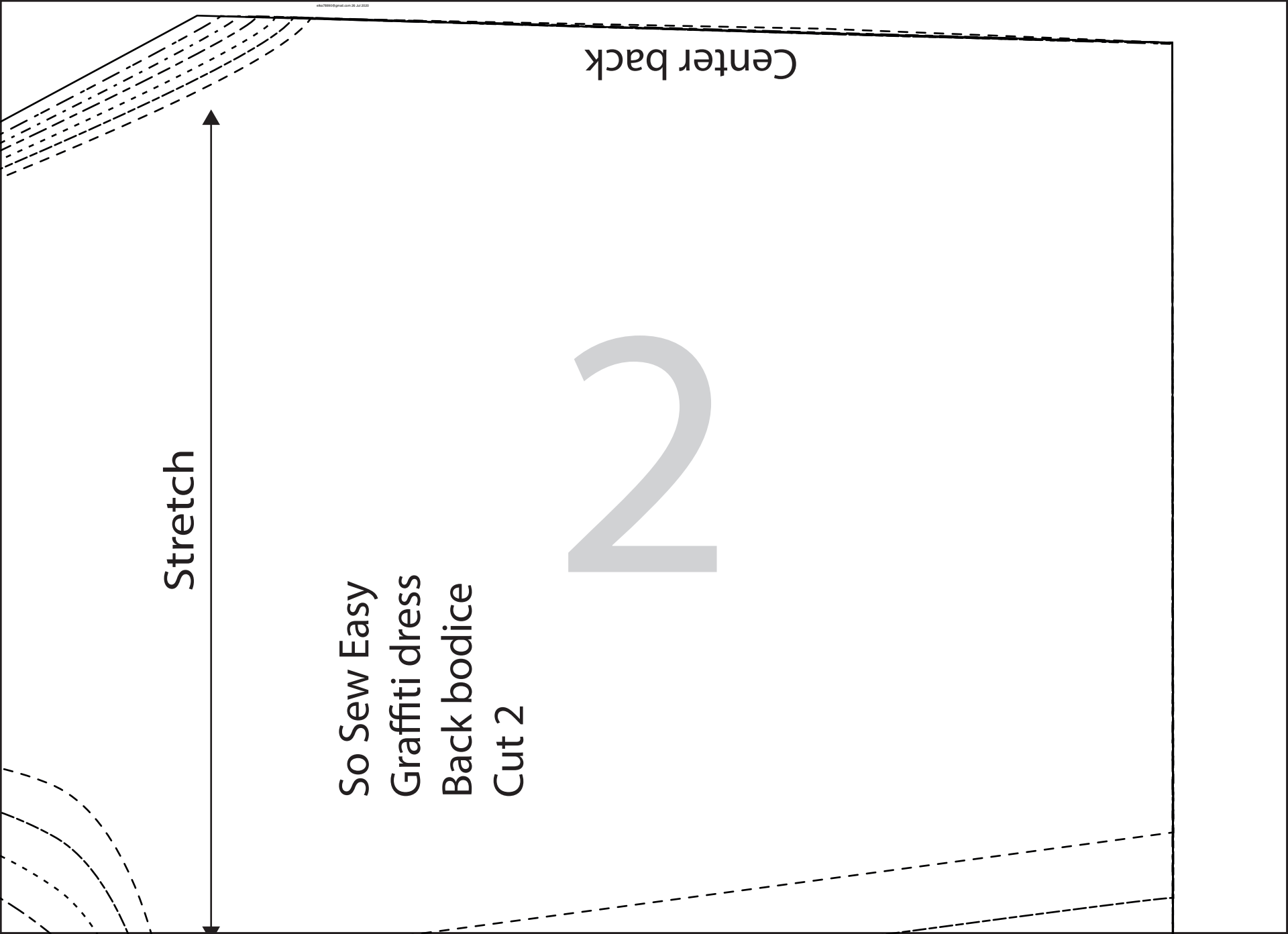
So Sew Easy  
Graffiti dress  
Back bodice  
Cut 2

2

Stretch



Center back





So Sew Easy  
Graffiti dress  
Front waist band  
Cut 1 on fold

Cut on fold

Stretch

So Sew Easy  
Graffiti dress  
Back waist band  
Cut 2

Center back

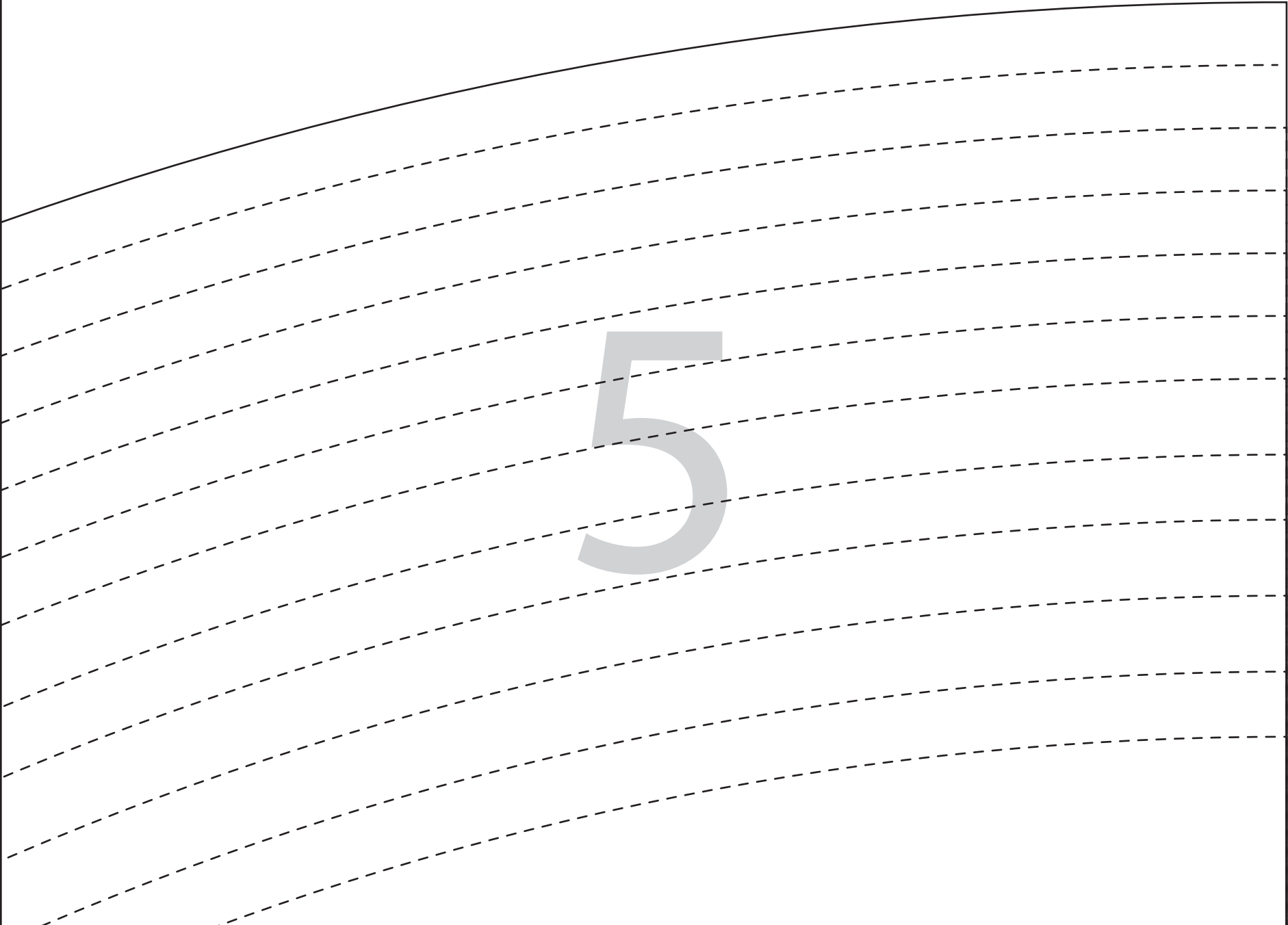
Stretch

3

4



5



Size A



Size B



Size C



Size D



Size E



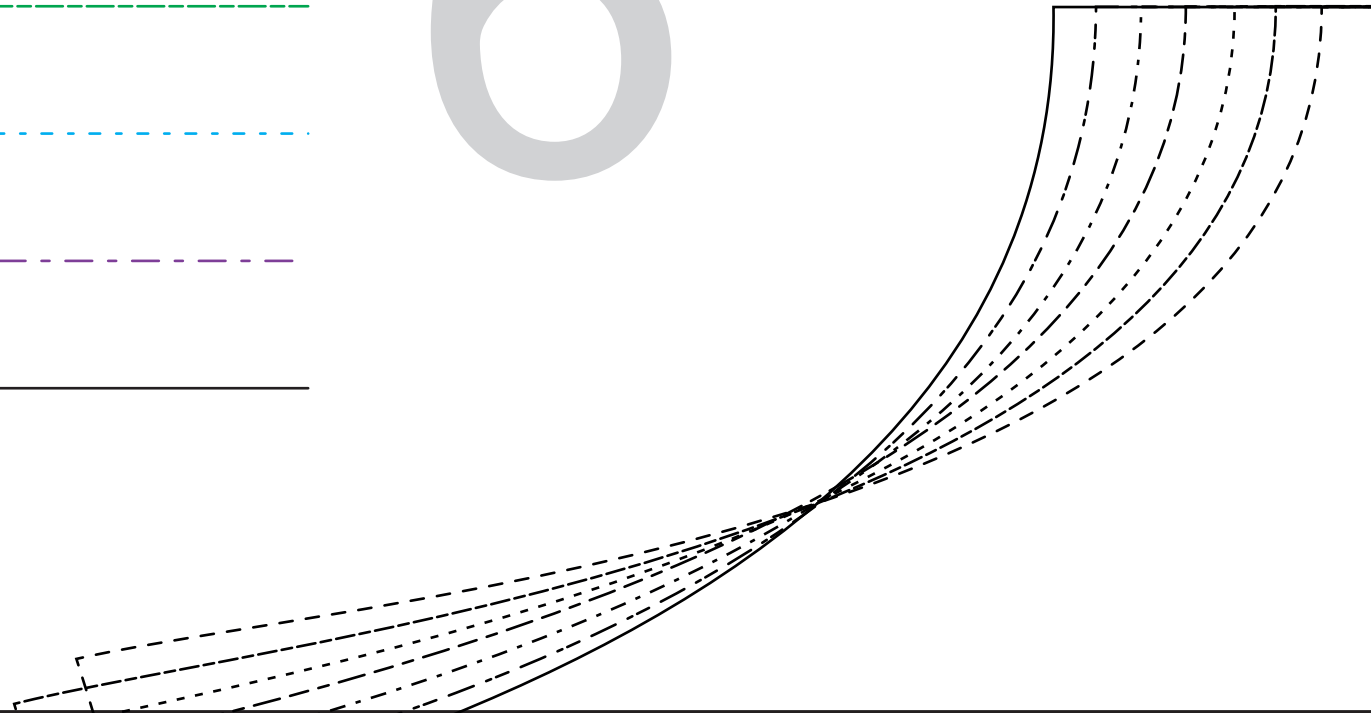
Size F

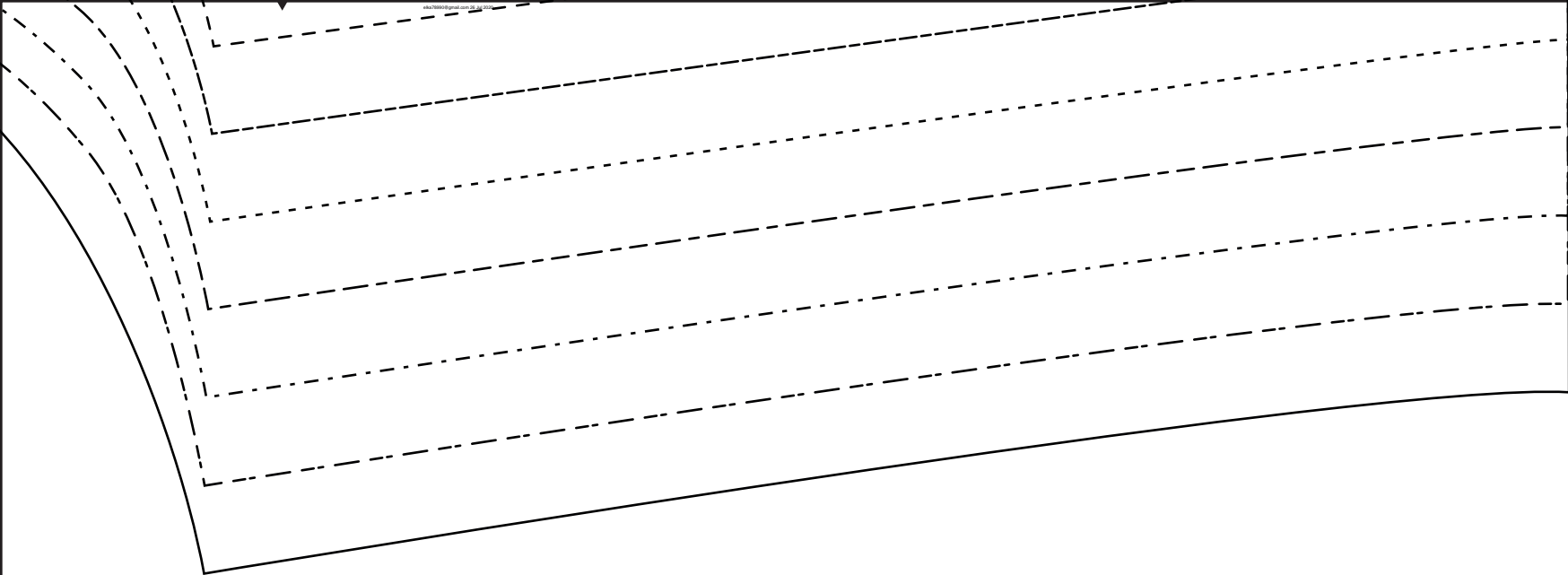


Size G



6





etch



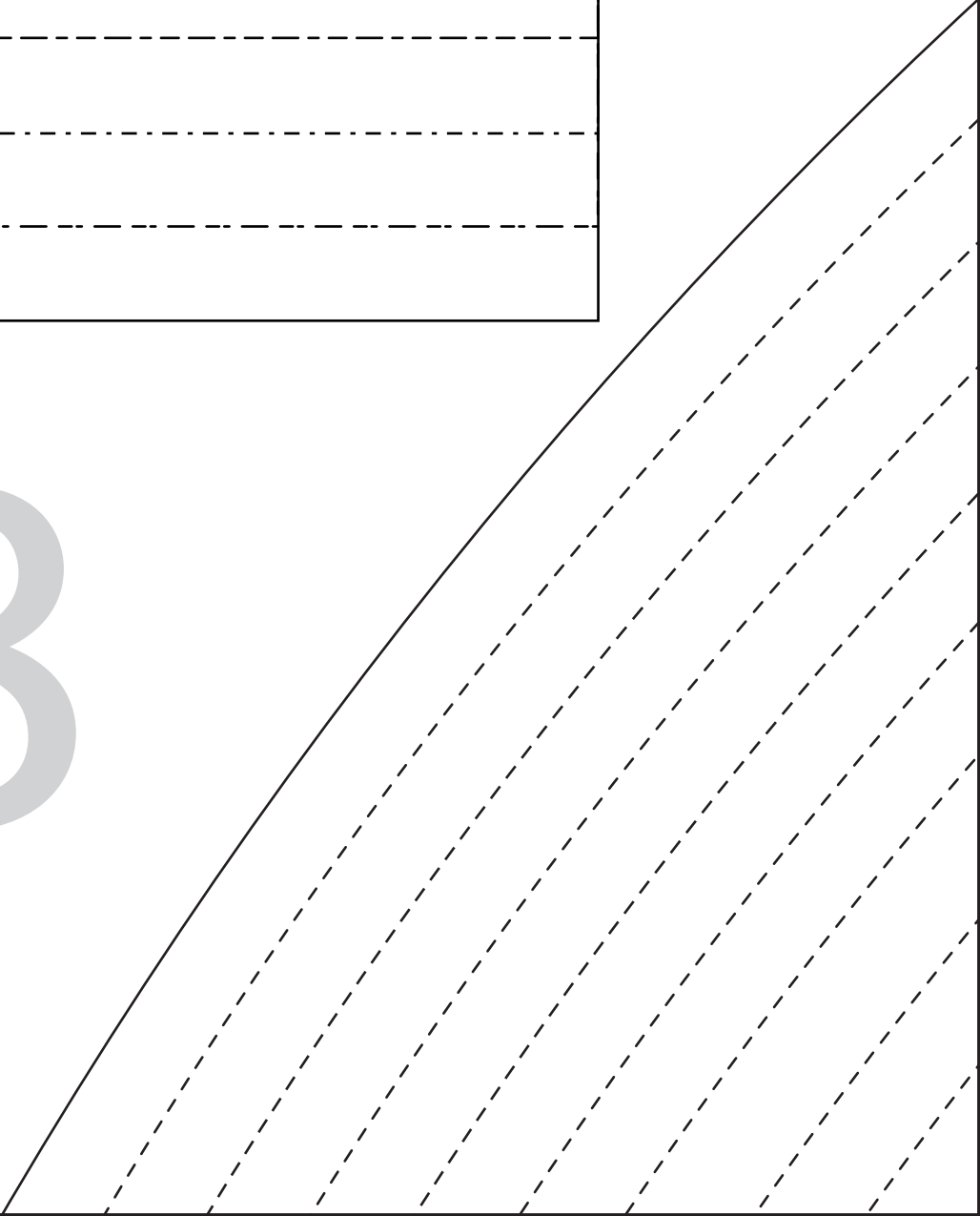
Cut on fold







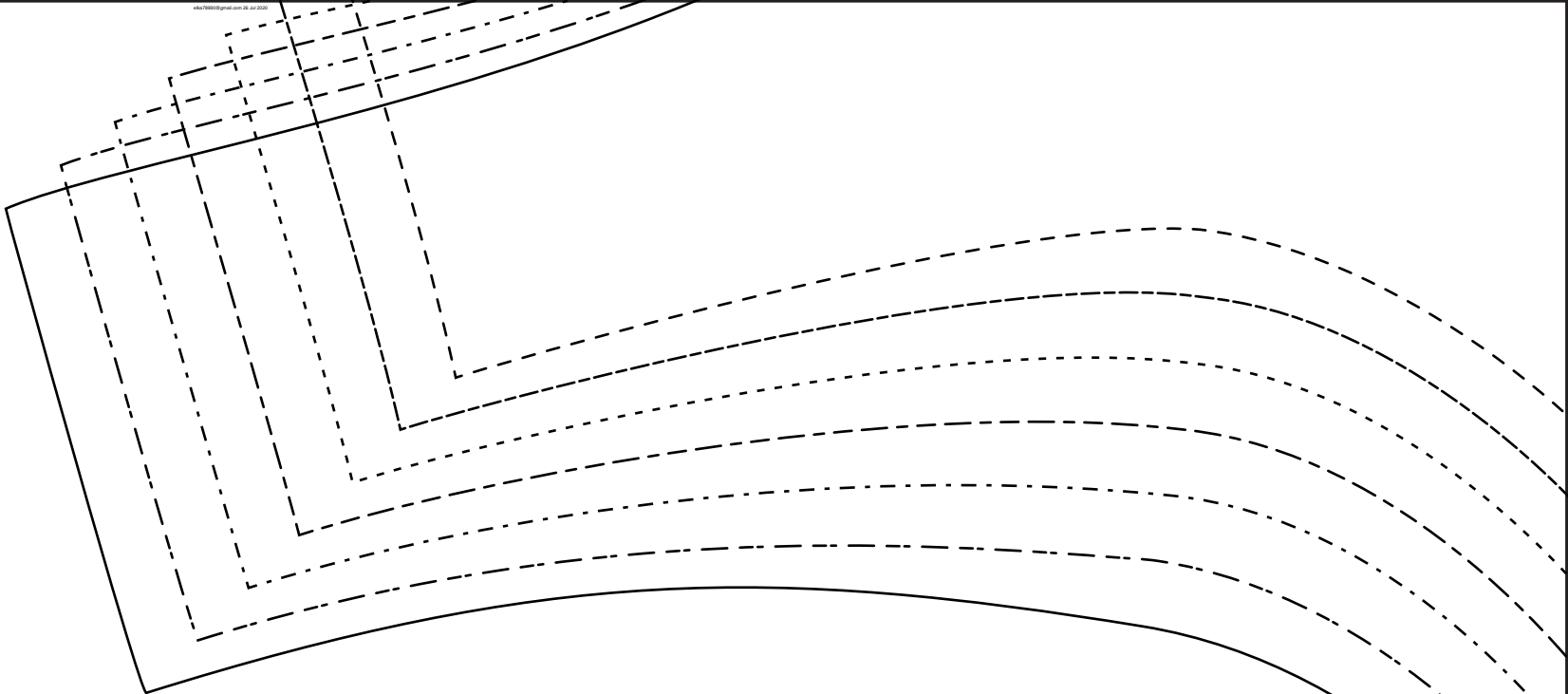
8



9

Cut on fold

10

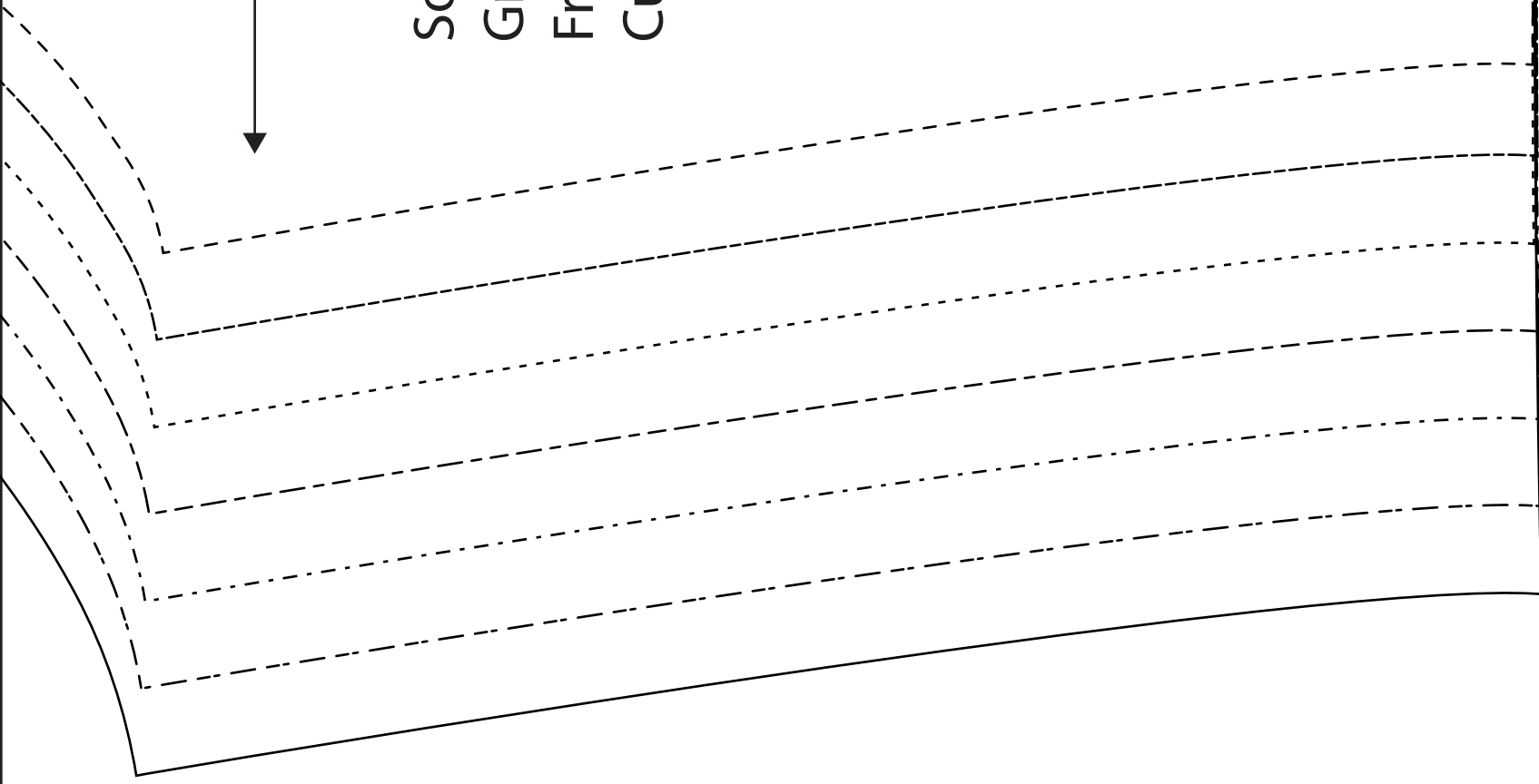


11

Str

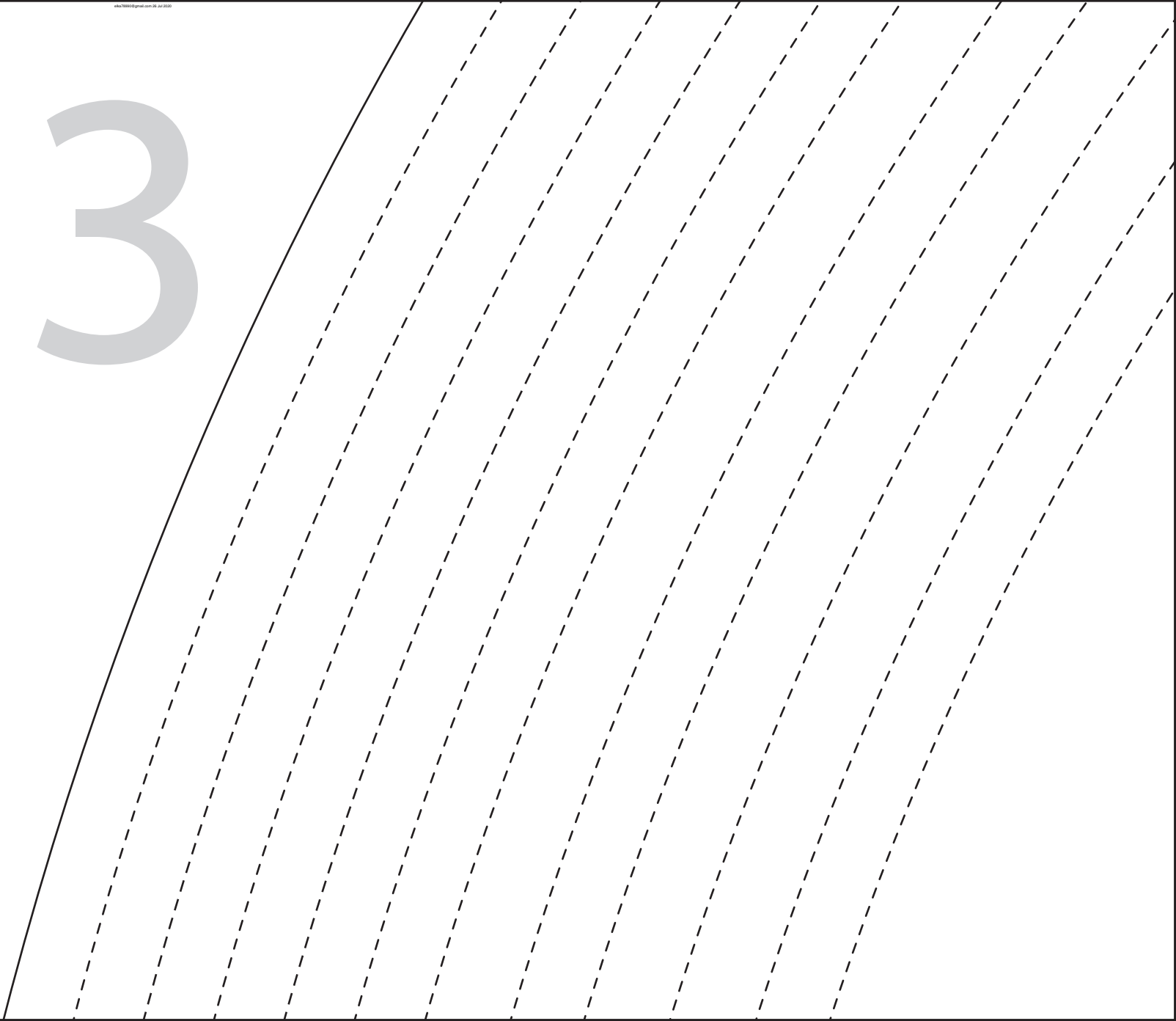
So Sew Easy  
Graffiti dress  
Front bodice  
Cut 1 on fold

12





13



So Sew Easy  
Graffiti dress  
Skirt  
Cut on fold  
Cut x 2

Pick your own length, cut at waist (smaller circle) then measure down straight line to get skirt length you need. Add 1 inch for seam allowance and then cut nearest skirt length on outer circle.

14

15

Cut on fold

16

17



