

# MARISSA DRESS PATTERN

Use these guides to get started today

---

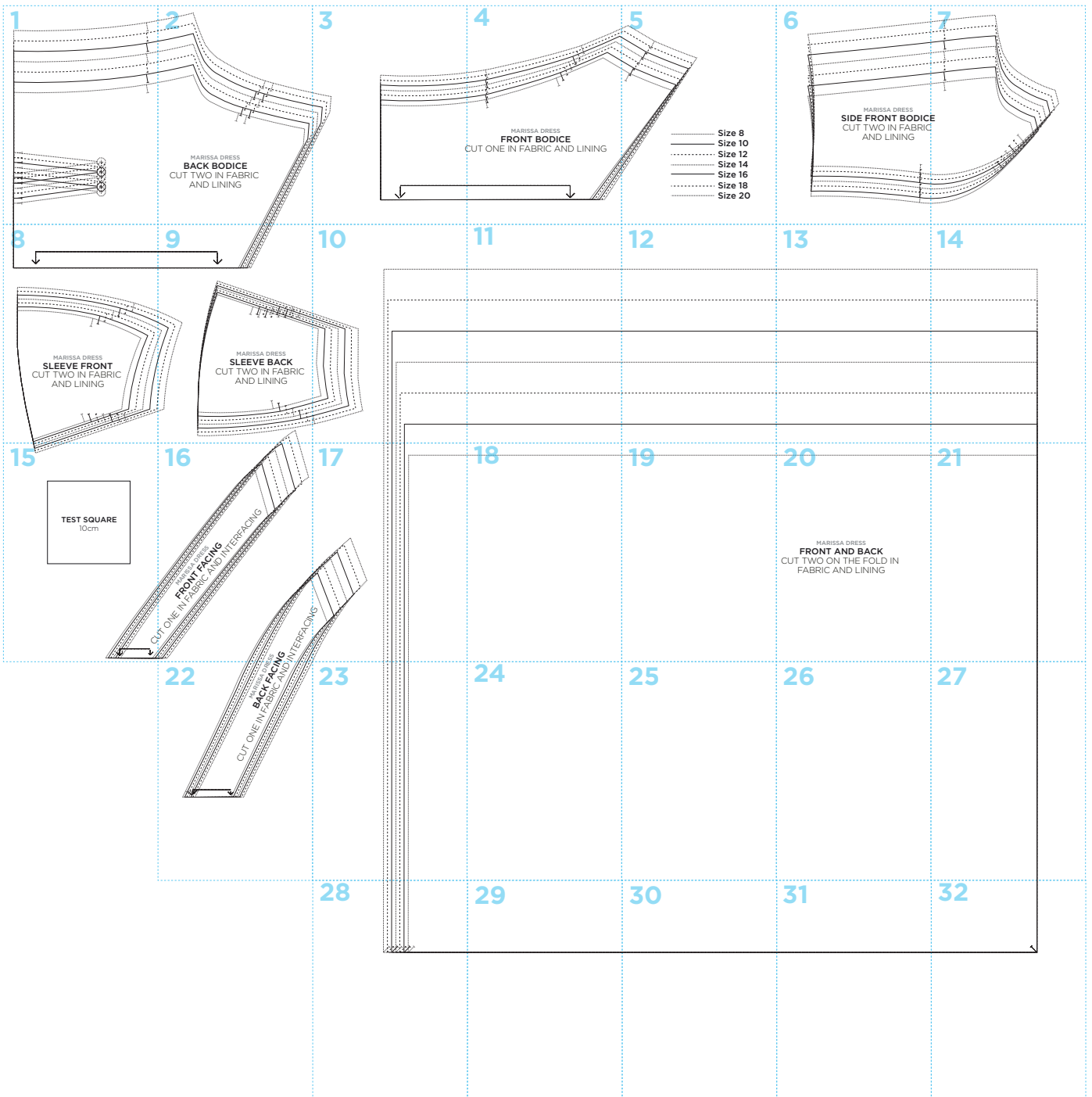
IN YOUR PRINT MENU, UNDER SIZE OPTIONS, BE SURE TO  
SELECT '**ACTUAL SIZE**', INSTEAD OF 'FIT TO PAGE'

---

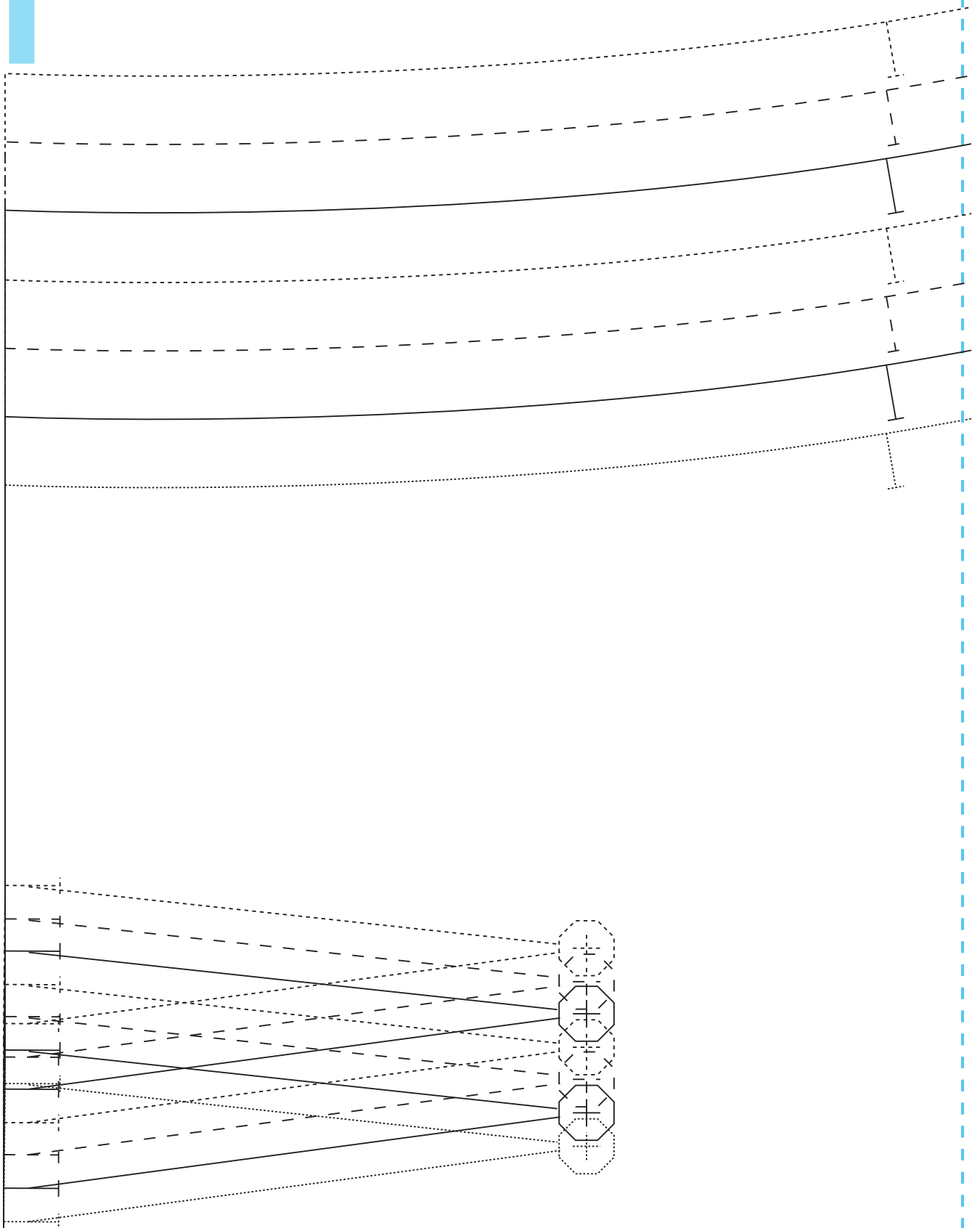
**Title:** Marissa Dress  
**Designer:** Posner and Posner  
**Magazine page:** 38



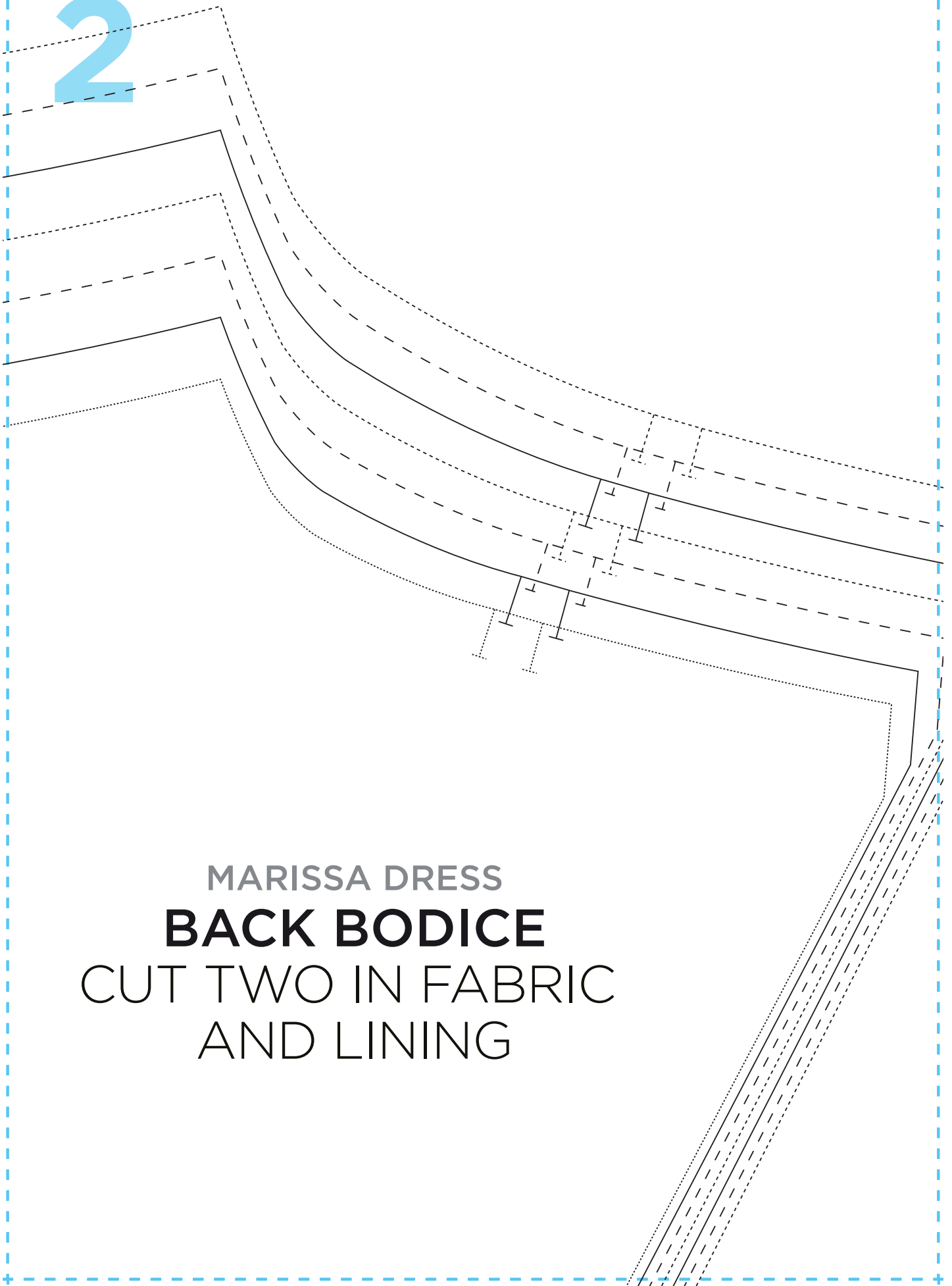
# MARISSA DRESS PATTERN LAYOUT



1

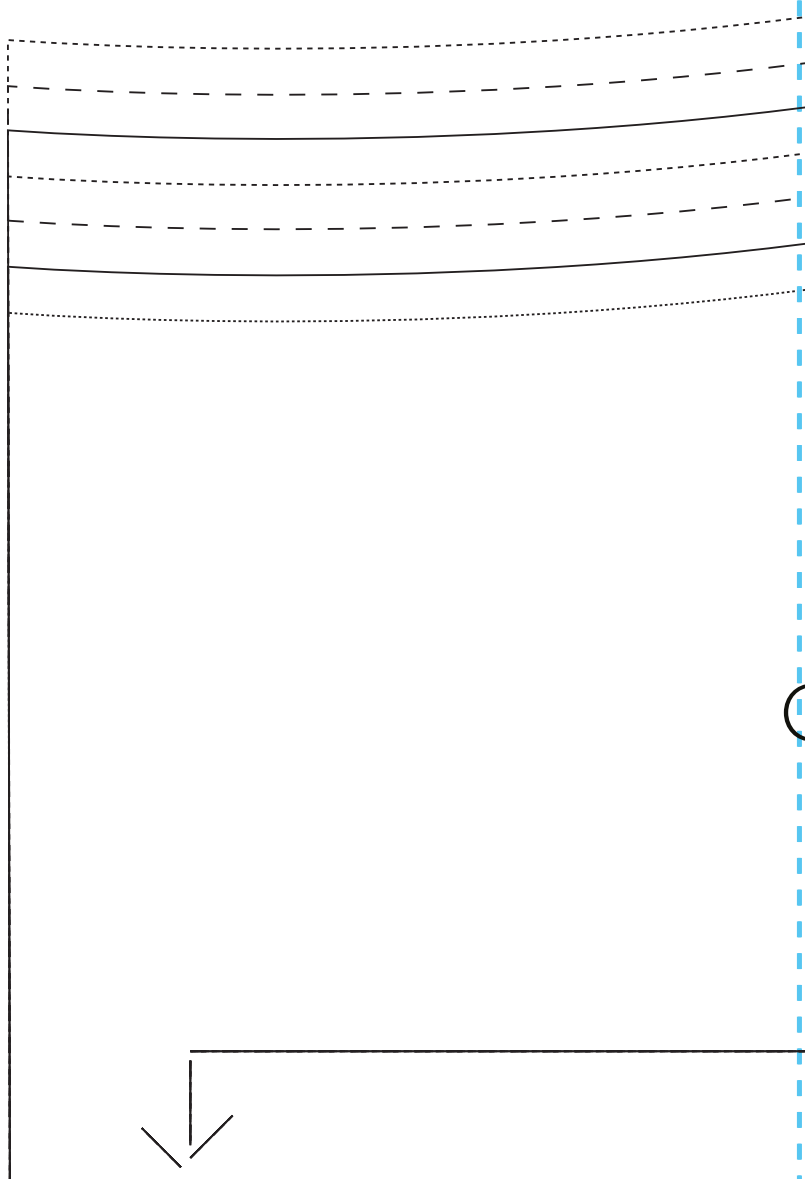
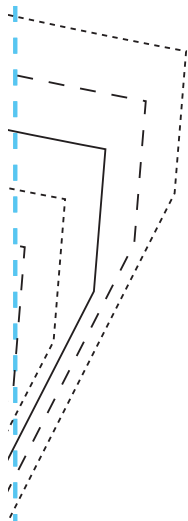


2

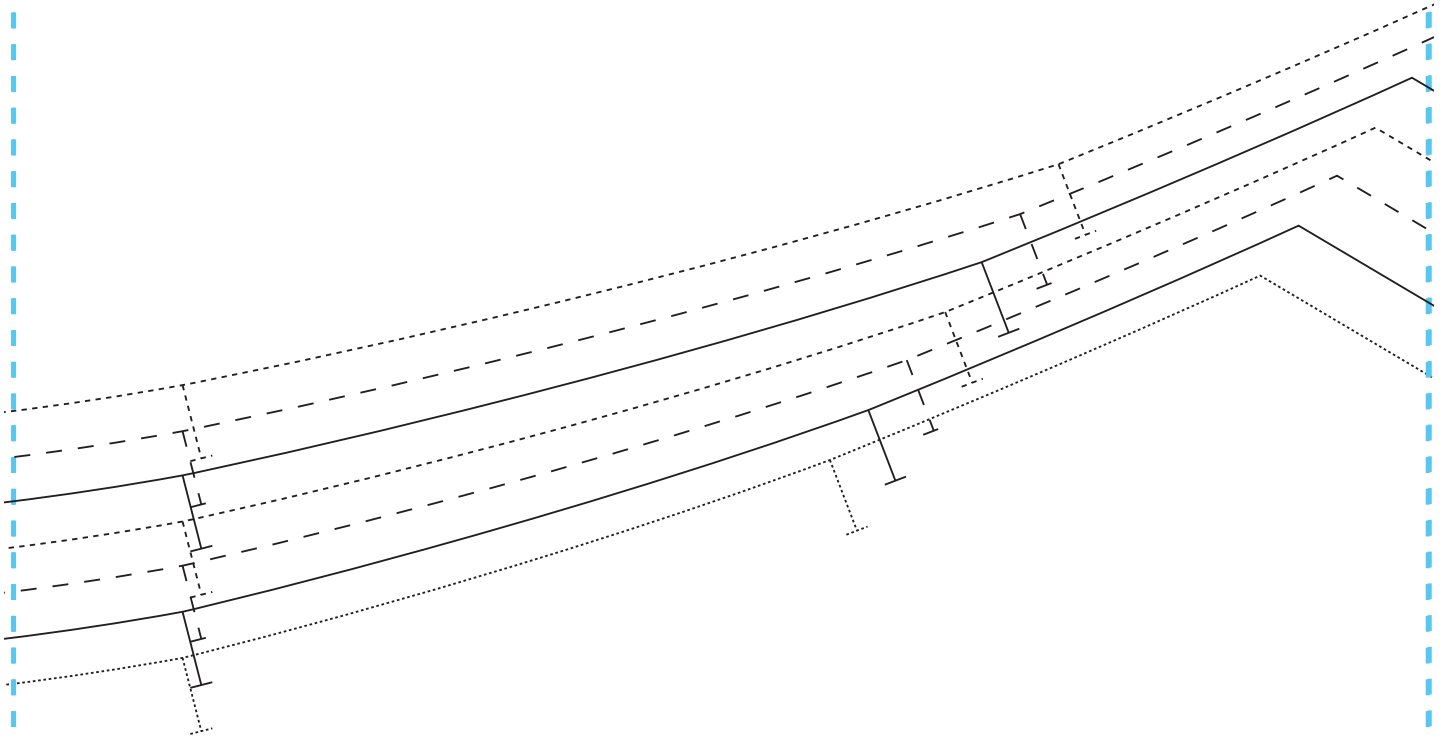


MARISSA DRESS  
**BACK BODICE**  
CUT TWO IN FABRIC  
AND LINING

# 3



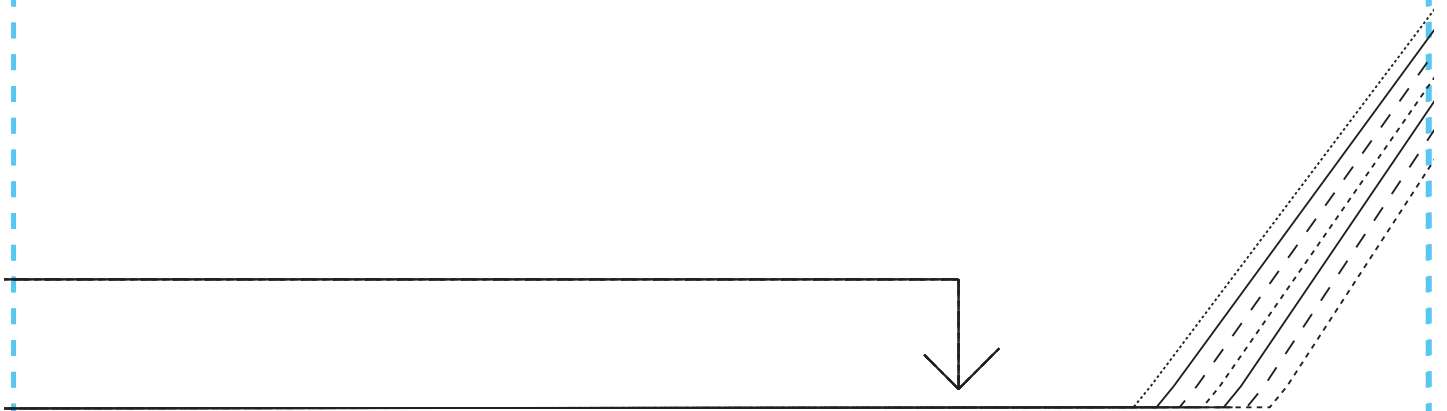
4



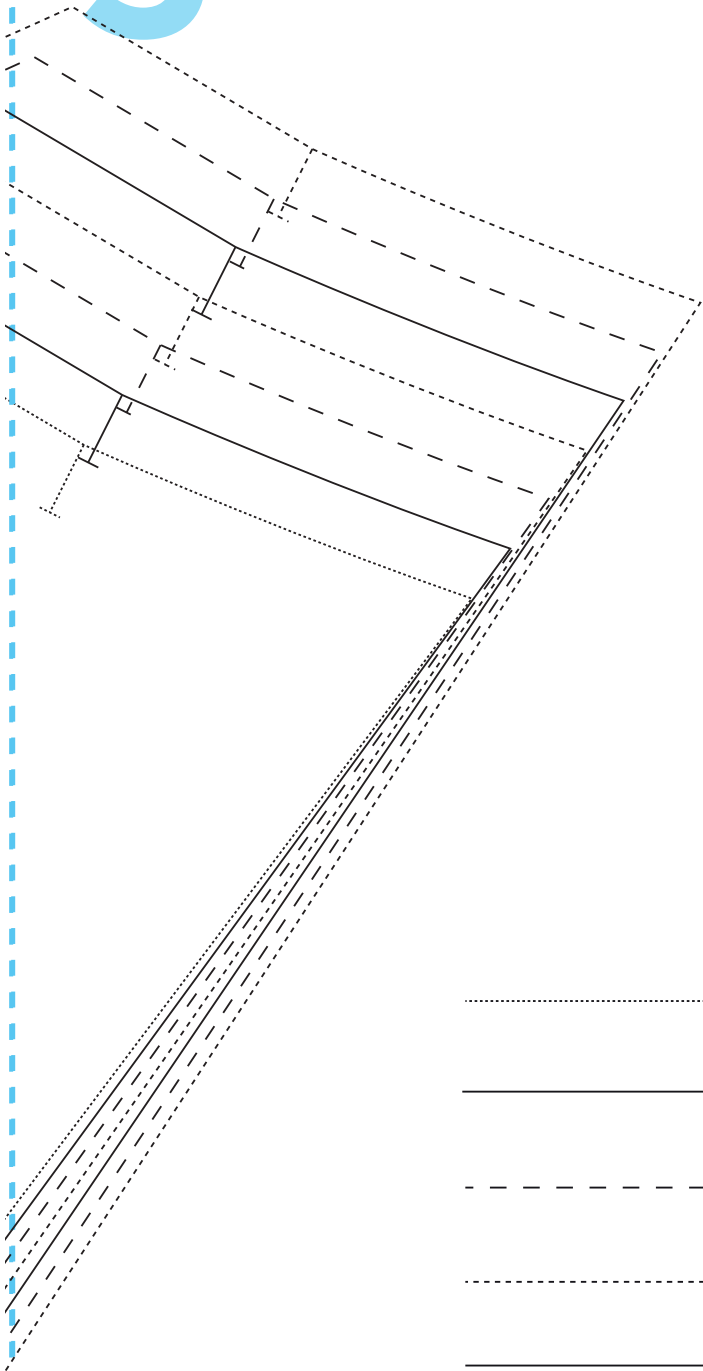
MARISSA DRESS

## FRONT BODICE

CUT ONE IN FABRIC AND LINING

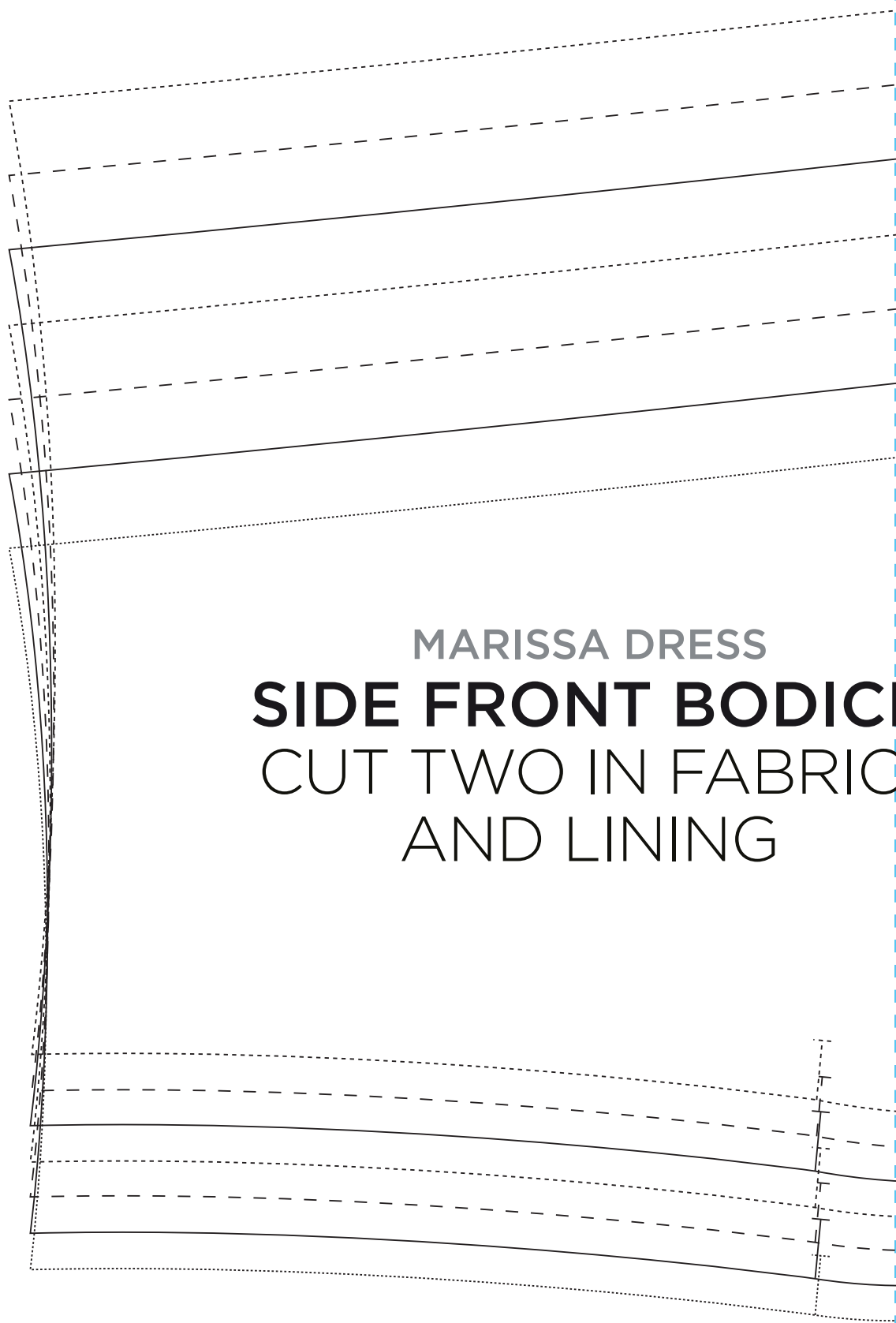


5



- ..... Size 8
- \_\_\_\_\_ Size 10
- - - - - Size 12
- ..... Size 14
- \_\_\_\_\_ Size 16
- - - - - Size 18
- ..... Size 20

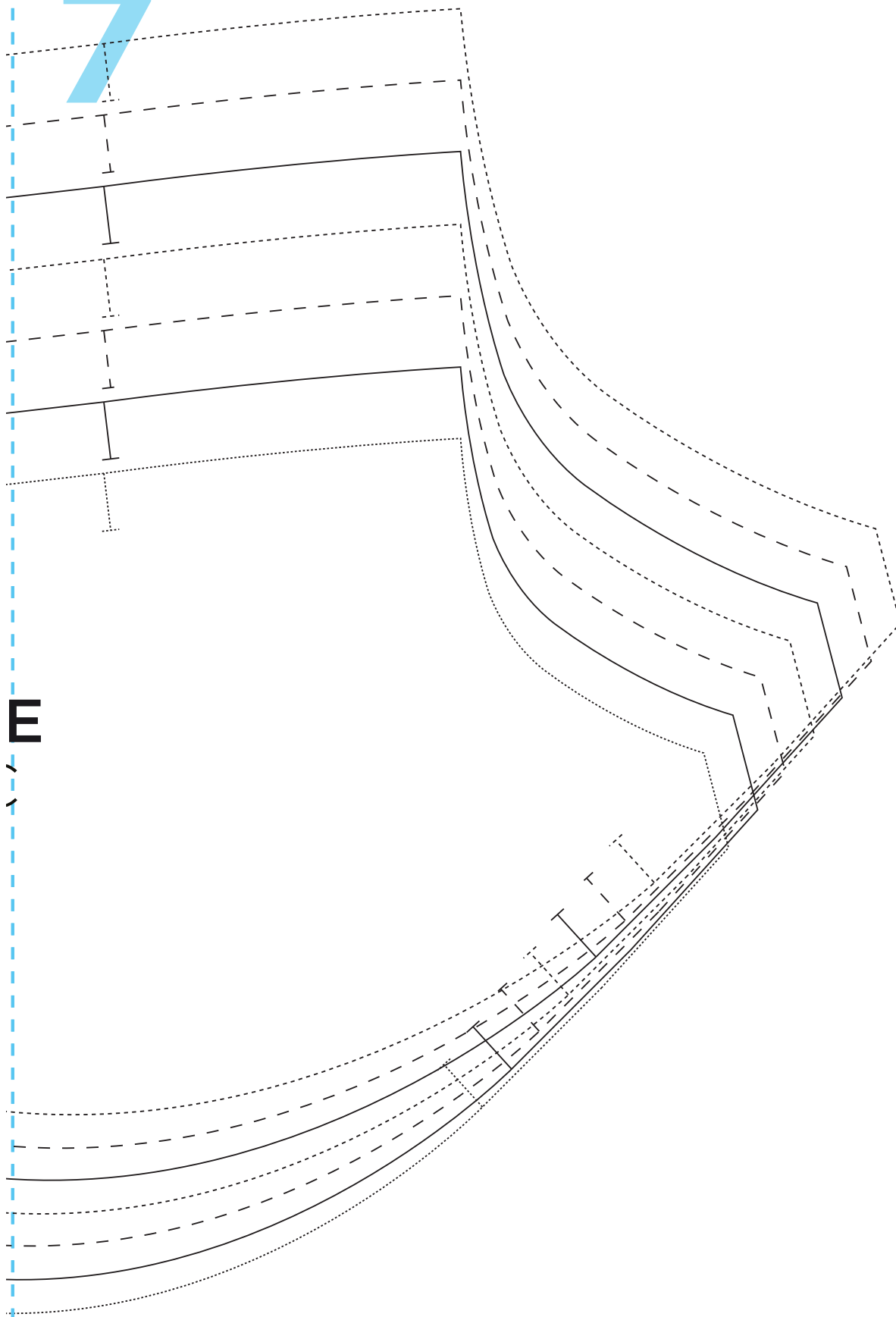
6



MARISSA DRESS  
**SIDE FRONT BODICE**  
CUT TWO IN FABRIC  
AND LINING



7



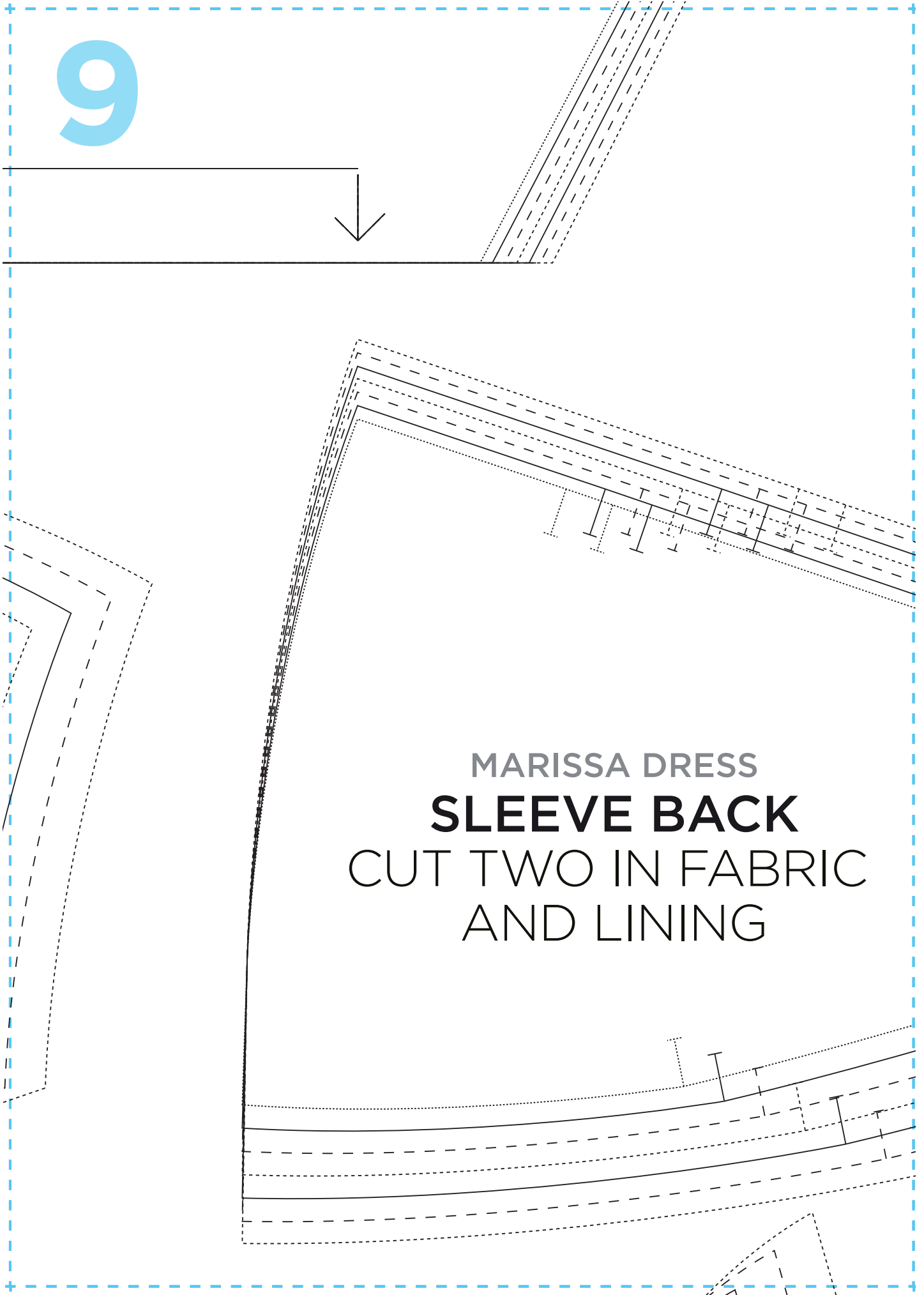
E

8



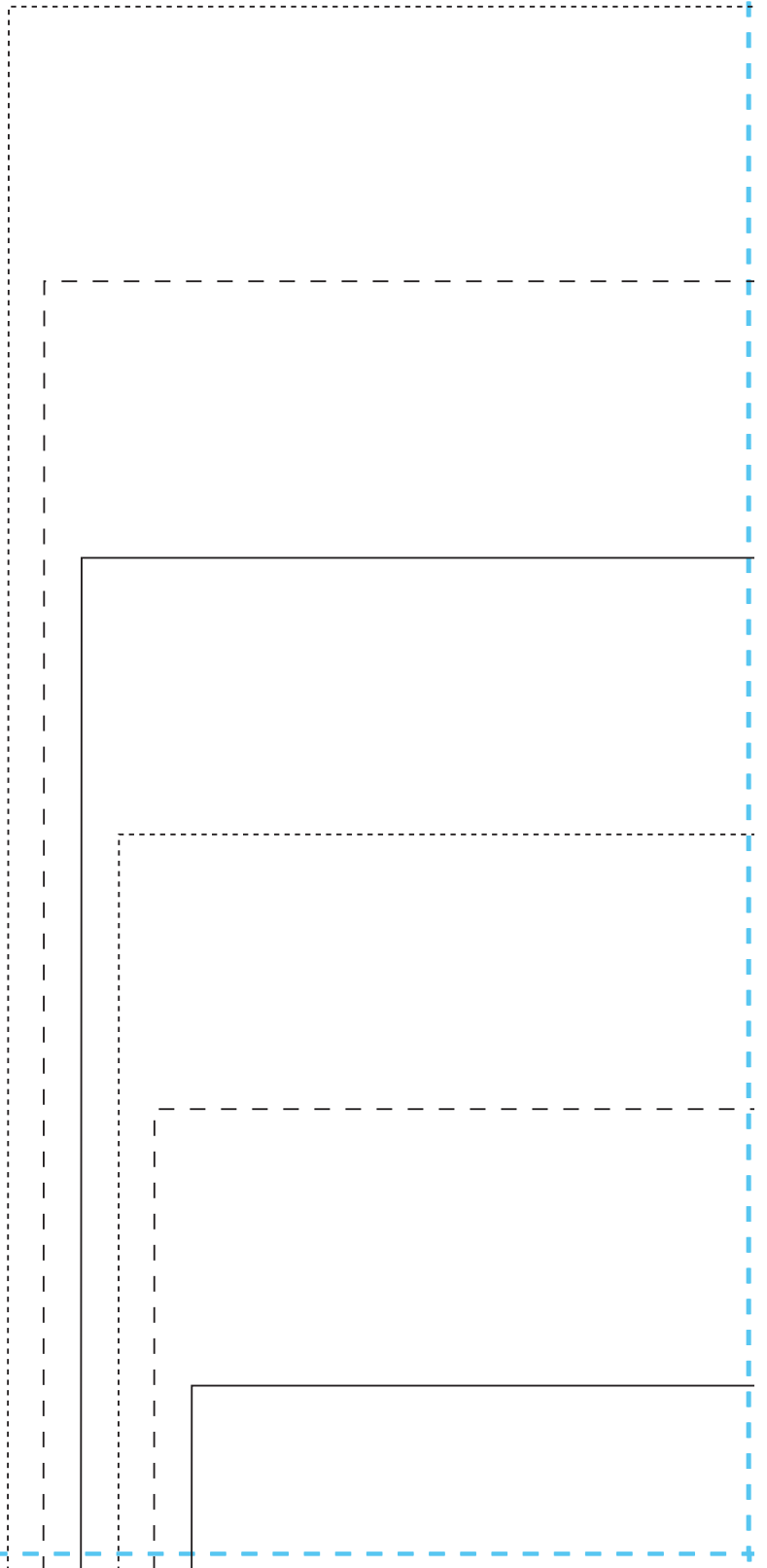
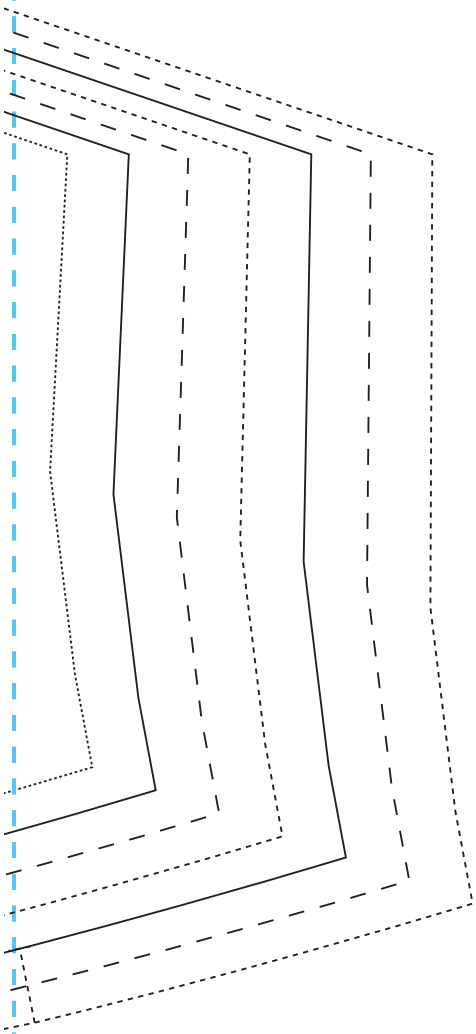
MARISSA DRESS  
**SLEEVE FRONT**  
CUT TWO IN FABRIC  
AND LINING

9



MARISSA DRESS  
**SLEEVE BACK**  
CUT TWO IN FABRIC  
AND LINING

# 10



11

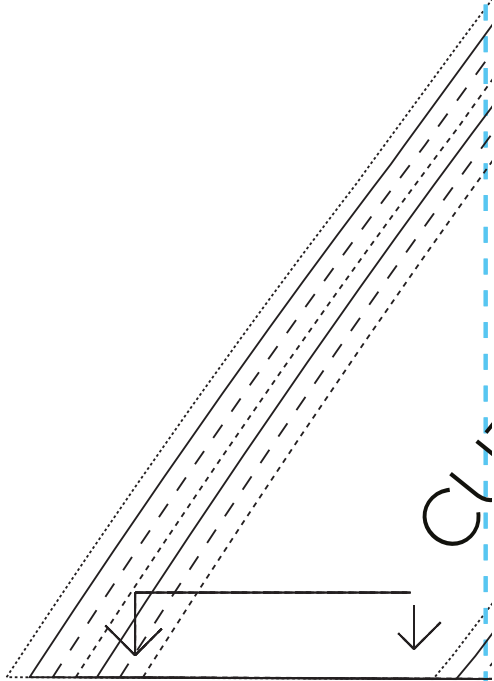
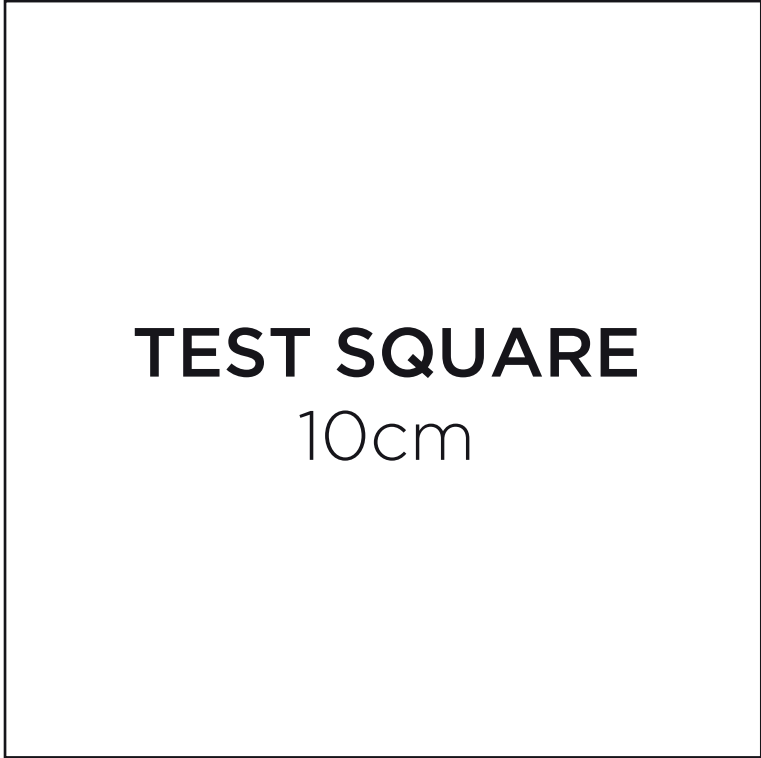
12

13

14



15

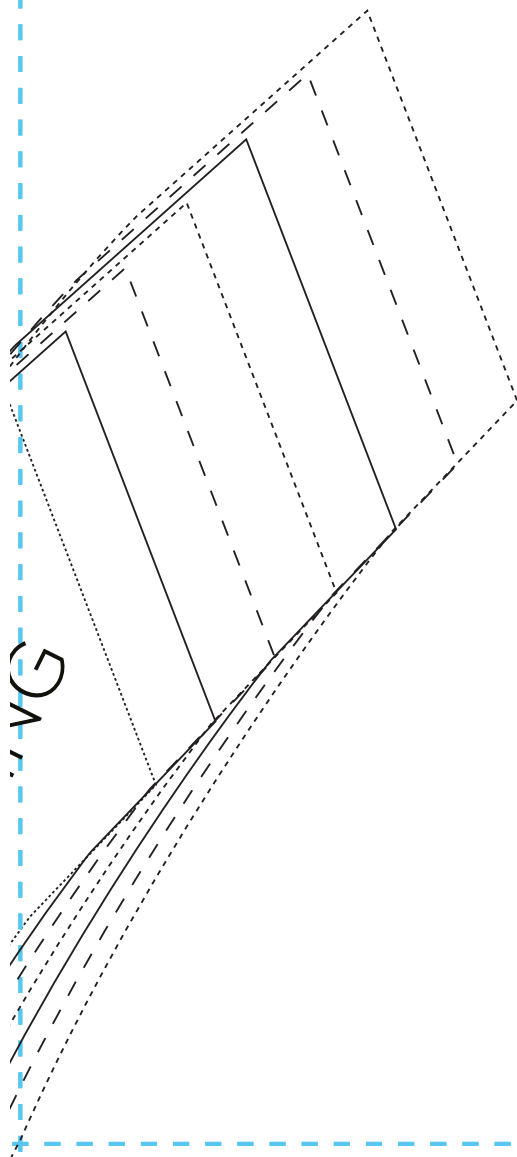


16

MARISSA DRESS  
**FRONT FACING**  
CUT ONE IN FABRIC AND INTERFACING

ESS  
NG  
INTERFACING

17



18

19

20

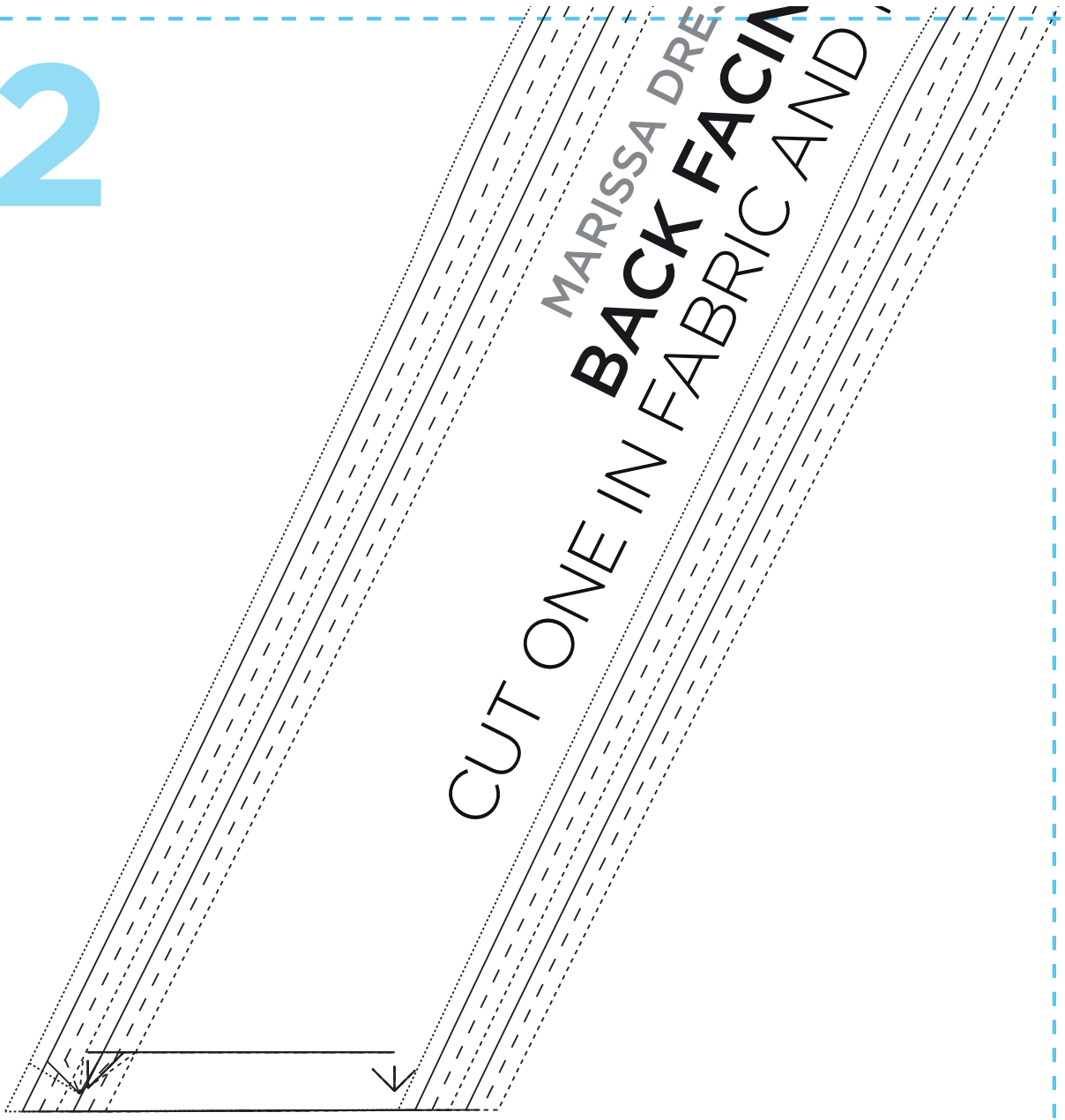
MARISSA DRESS

**FRONT AND BACK**

CUT TWO ON THE FOLD IN  
FABRIC AND LINING

21

22





23

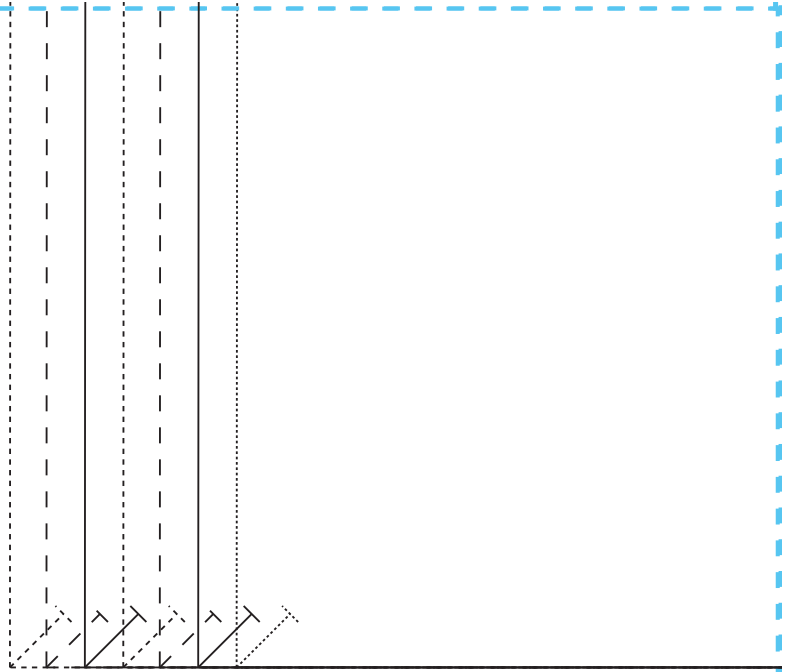
24

25

26

27

28



29

30



31

32

