

Scalloped Christmas Tree Skirt Pattern



Earlier in the chat group, I asked around for some ideas for this weekend's project. It turns out that many would like to do an attractive and easy Christmas Tree Skirt pattern. So, I dedicate this skirt to Whitney and Sherry in the chat group for the idea. Since I have never made one before I decided to use a design that I have already used, and then expand on it. I based this design on the [Christmas Table Runner](#) which has been very popular.

I do have to admit that I had a bit of a hard time working out the pattern. However, I finally came up with one that will use very little paper when printing it at home. This Scalloped Christmas Tree Skirt Pattern is only one pattern piece used four times in one color, four times in a contrast color, eight times on a based color and eight times on interfacing.

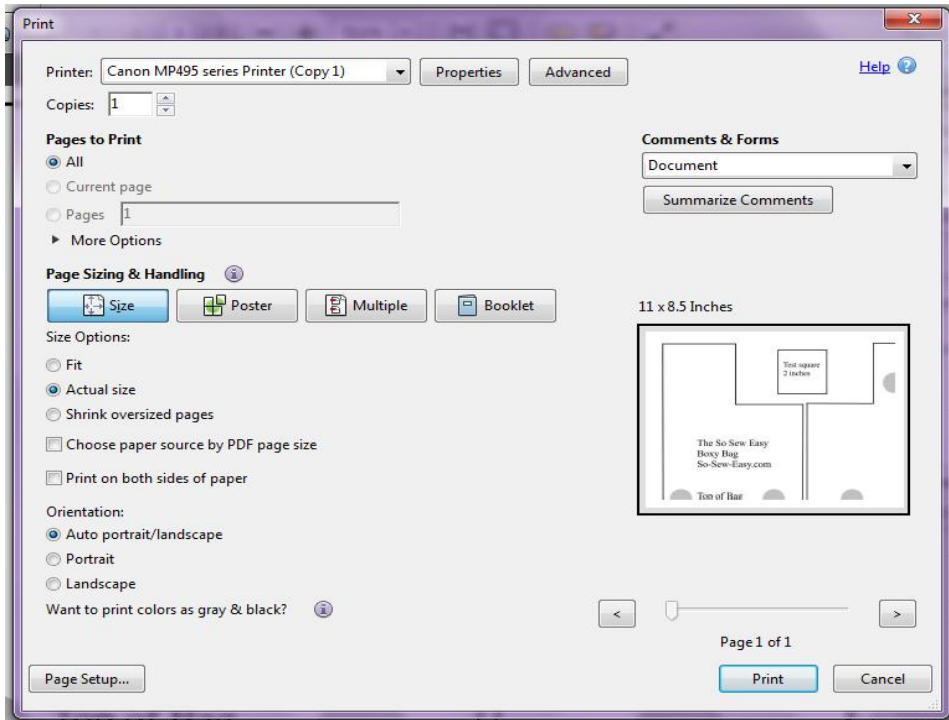
Just like on the Christmas Table Runner, you will finish each petal of the scalloped Christmas tree skirt pattern first, then sew the sides together which will expose the color underneath. This skirt has a bias tape attached as a finish detail that turns into a bow so the skirt can be closed.

Experience level: Beginner

You can read more about this pattern over at So Sew Easy [HERE](#).

Find more great sewing patterns at So Sew Easy – <https://so-sew-easy.com>

To print your PDF pattern



Your pattern pieces come at the end of these instructions. For accurate printing, please make sure you are using the latest version of Adobe Reader. You can [download the latest version here](#) if you need to.

Select File → Print and the print dialogue box opens. Under Page Sizing and Handling, select ACTUAL SIZE. Check the preview in the right hand side illustration. Select the page numbers you want to print. You can print the whole document, or just the pattern pieces.

On the edge of the top left page is a box you can use to test your printing. This box should measure 2 inches square. If yours is wildly different you will need to check your printer options to make sure the pages are not being resized.

Use the grey guides on the overlap of the sheets to match up the pattern pieces, folding under or cutting off any overlaps, tape together and cut out your pattern pieces.

Help printing and assembling your pattern

You can find helpful tutorials on how to download, print and assemble PDF sewing patterns here:

[How to download and print a PDF sewing pattern](#)

[How to print and assemble a PDF sewing pattern](#)

Find more great sewing patterns at So Sew Easy – <https://so-sew-easy.com>



Materials

- 2 yards of cotton quilting (I used different contrasting fabrics for this as well so you'll see three types of fabric.)
- 2 yards of cotton quilting of contrasting fabric
- Thread to match
- Soft batting or fusible interfacing enough to match eight pieces of petals (depends on the width of the batting)
- 1 1/2 yards of 1" to 1 1/4" wide bias tape

Tools

- Rotary cutter
- Quilting pins or clips
- [Serger](#)
- Sewing machine

Find more great sewing patterns at So Sew Easy – <https://so-sew-easy.com>



Thank you for downloading this pattern and tutorial. I hope you enjoyed making this project and remember that I love to see what you made so do upload your completed projects to the pattern page on Blueprint.

Keep up with all the latest news and sewing projects at [So Sew Easy](#).

We also have a really great sewing chat group where you can ask questions, share your completed projects, and get 24 hr sewing inspiration. It's not just for So Sew Easy projects – you can chat about all sewing there, whether a newbie just starting out, or an advanced and experienced sewer, there's something for everyone in the sewing chat group. Join us here.

[SEWING CHAT GROUP](#)

For the latest list of both free and paid patterns available, pop on over to [my designer page on Blueprint](#).

This pattern graphic, the photos and the instructions are copyright So Sew Easy Pte Ltd and protected by law. All rights reserved. Please do not copy, publish, sell, redistribute or alter them in any way. Please don't print and give to your friends, or send it to anyone by email. Please do not rebrand this work as your own and sell or give it away, even if altered. This is intended for your personal use. If you would like to recommend these instructions, please pass on the original download link at So-Sew-Easy.com. Thank you for your understanding.

Usage – you ARE allowed to use this pattern to make things to sell on a small handmade basis, such as for craft fairs and for your Etsy shop. However, it may not be used for larger scale commercial purposes without a commercial license.

Find more great sewing patterns at So Sew Easy – <https://so-sew-easy.com>



**Scalloped Christmas Tree
Skirt Pattern**

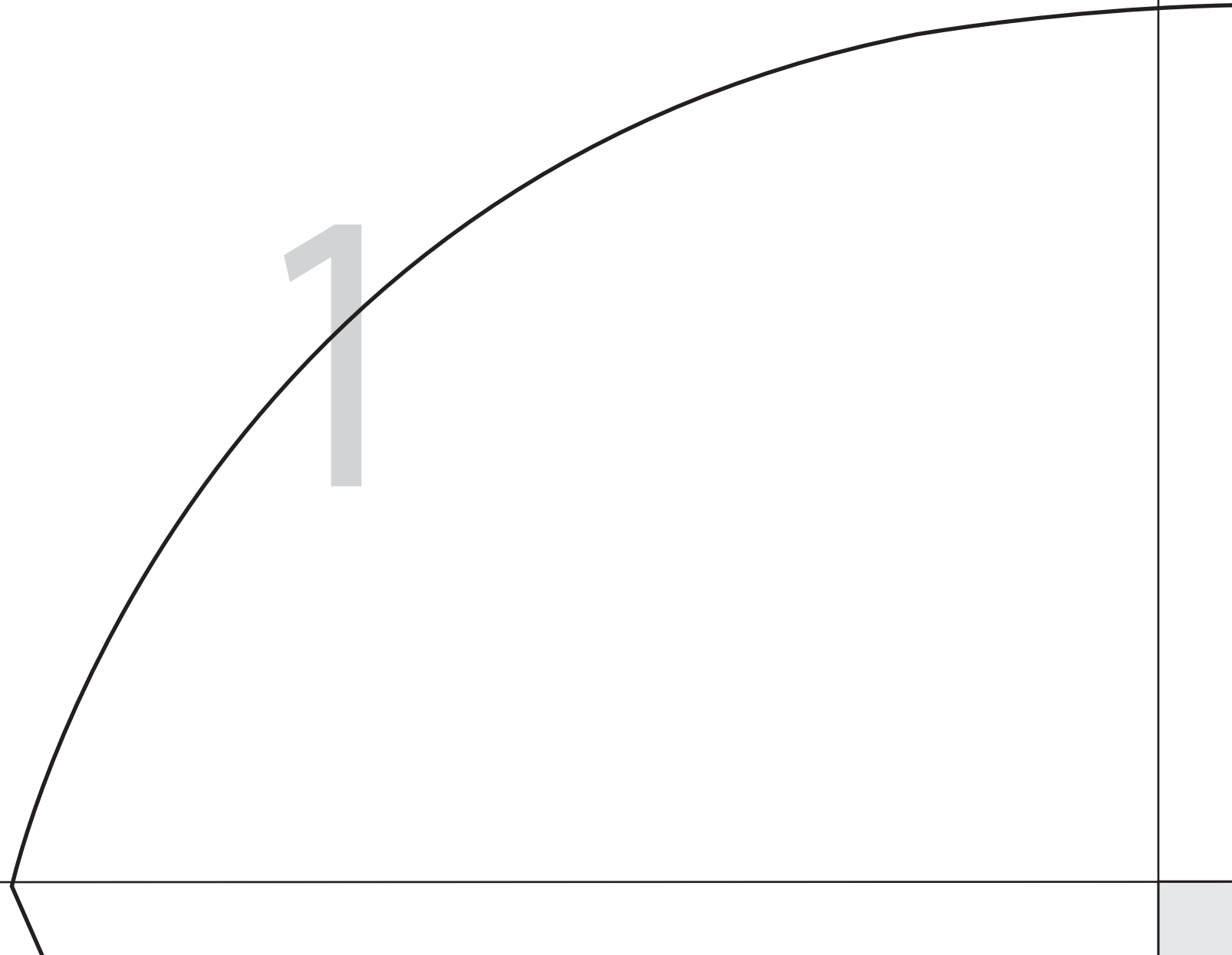
Square Test

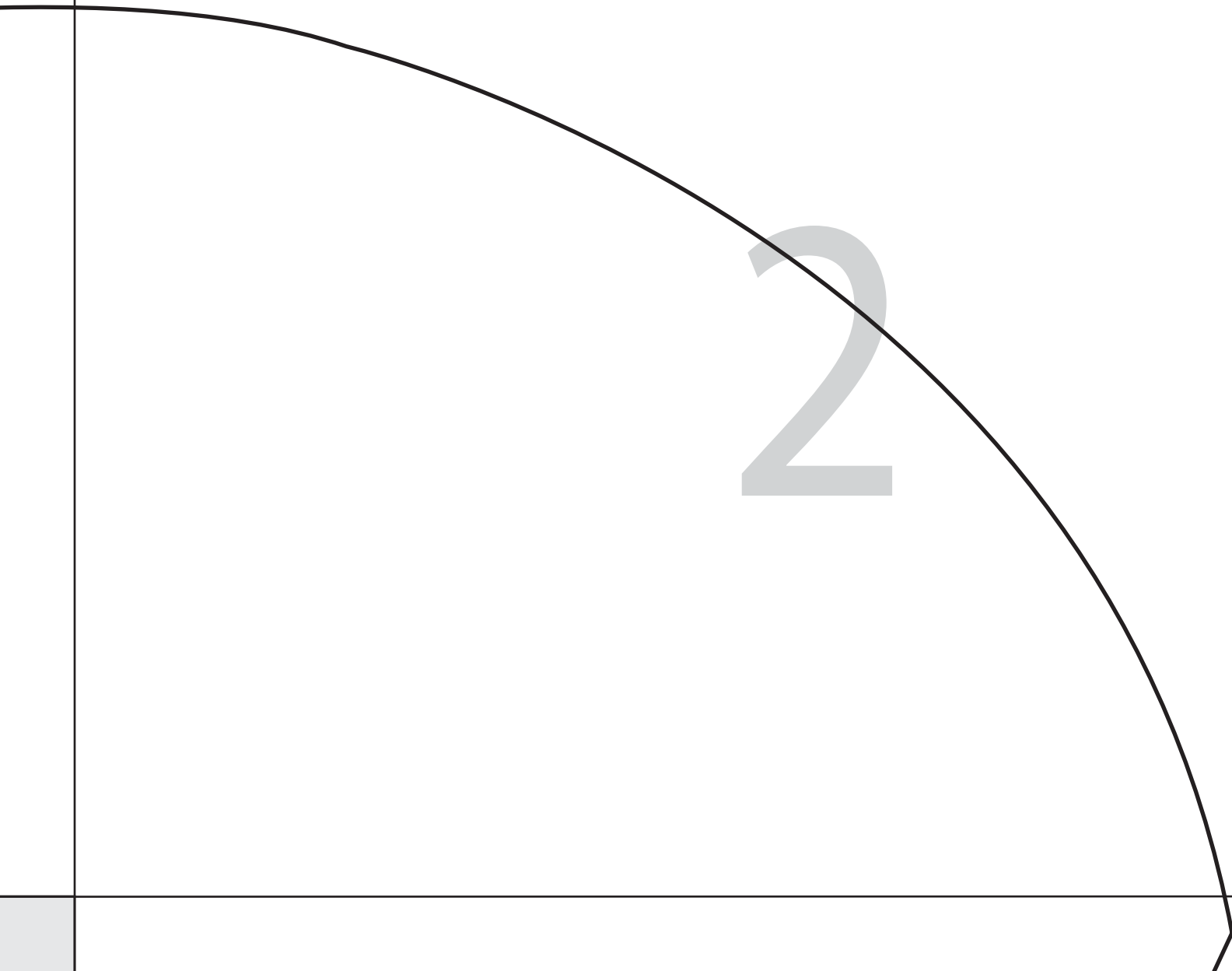
2" X 2"

So-Sew-Easy.com

Copyright 2019

1





2

Cut 8 on Fabric
Cut 8 on Lining
So-Sew-Easy.com

3

4

5

For instructions on how to use this pattern please visit:
www.so-sew-easy.com/christmas-tree-skirt/

6