

sew

Issue 116 Christmas 2018

PRINT
OUT
& KEEP

SASHA JACKET PATTERN

Use these guides to get started today

IN YOUR PRINT MENU, UNDER SIZE OPTIONS, BE SURE TO SELECT TO PRINT 'ACTUAL SIZE', INSTEAD OF 'FIT TO PAGE'

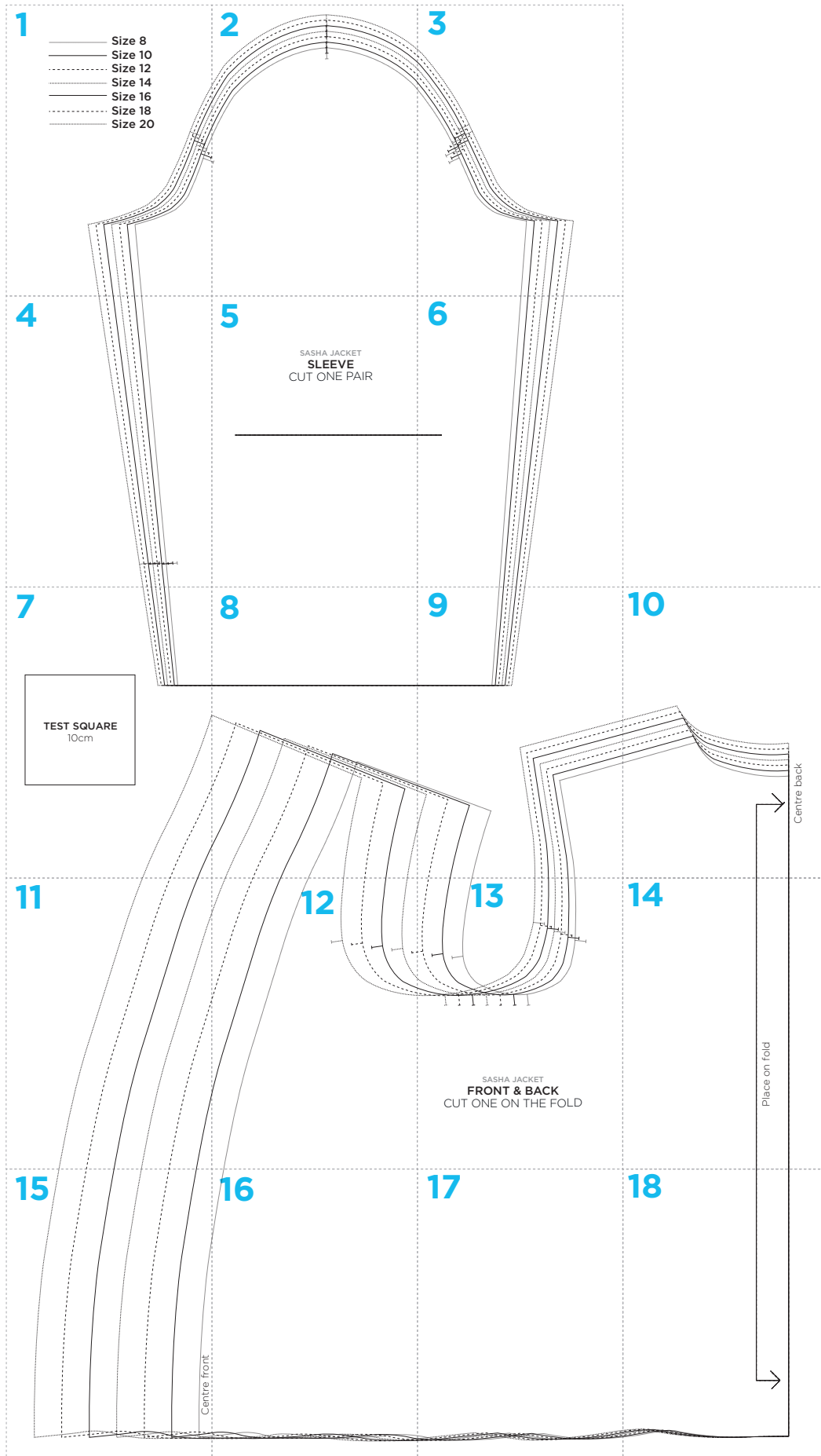
Title: Sasha jacket
Designer: Amanda Walker
Magazine page: 37



© ACEVILLE PUBLICATIONS LTD | SEWMAG.CO.UK

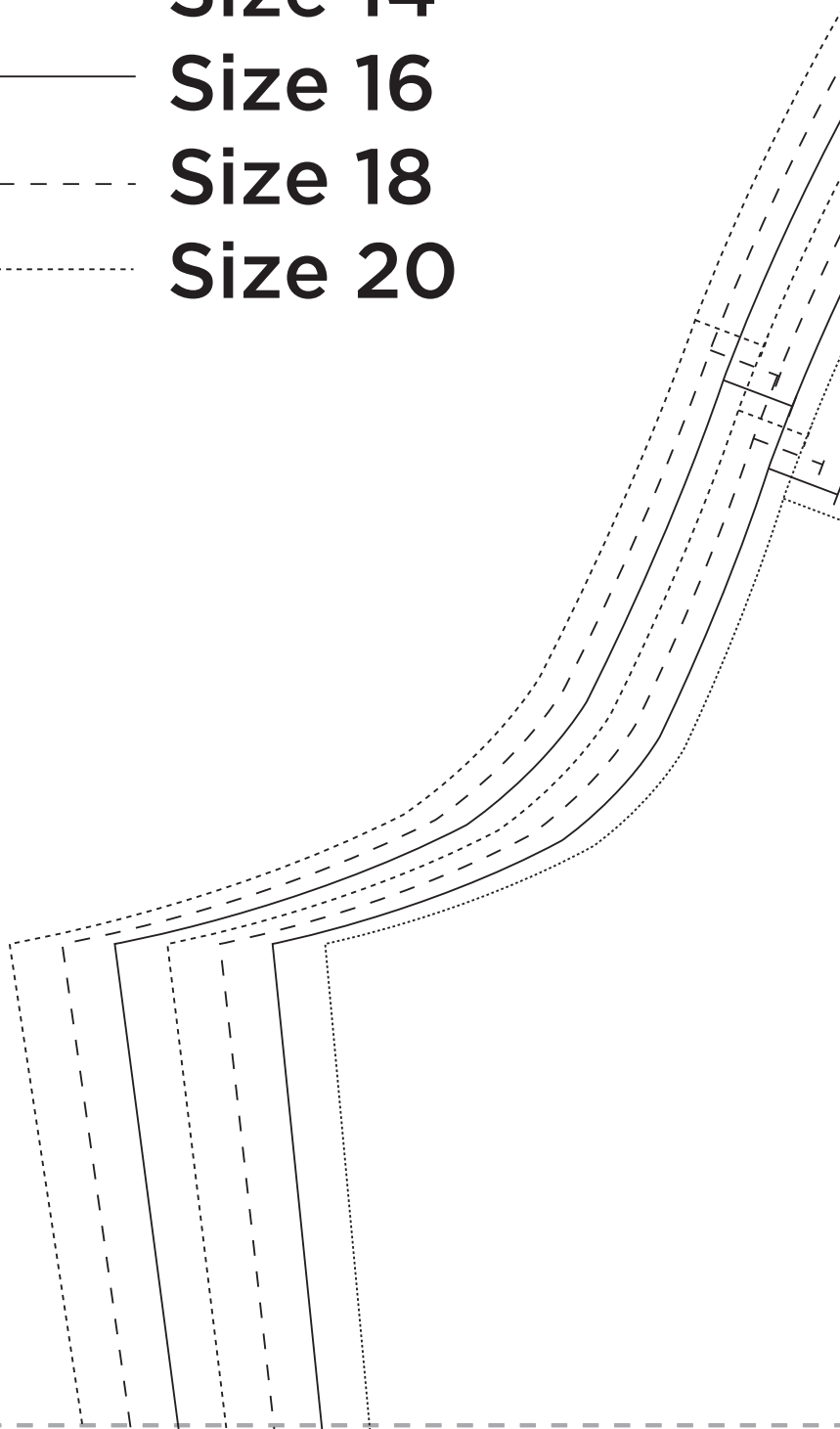
All projects, templates and patterns are for personal home use only and cannot be sold or used for commercial purposes.

SASHA JACKET PATTERN LAYOUT

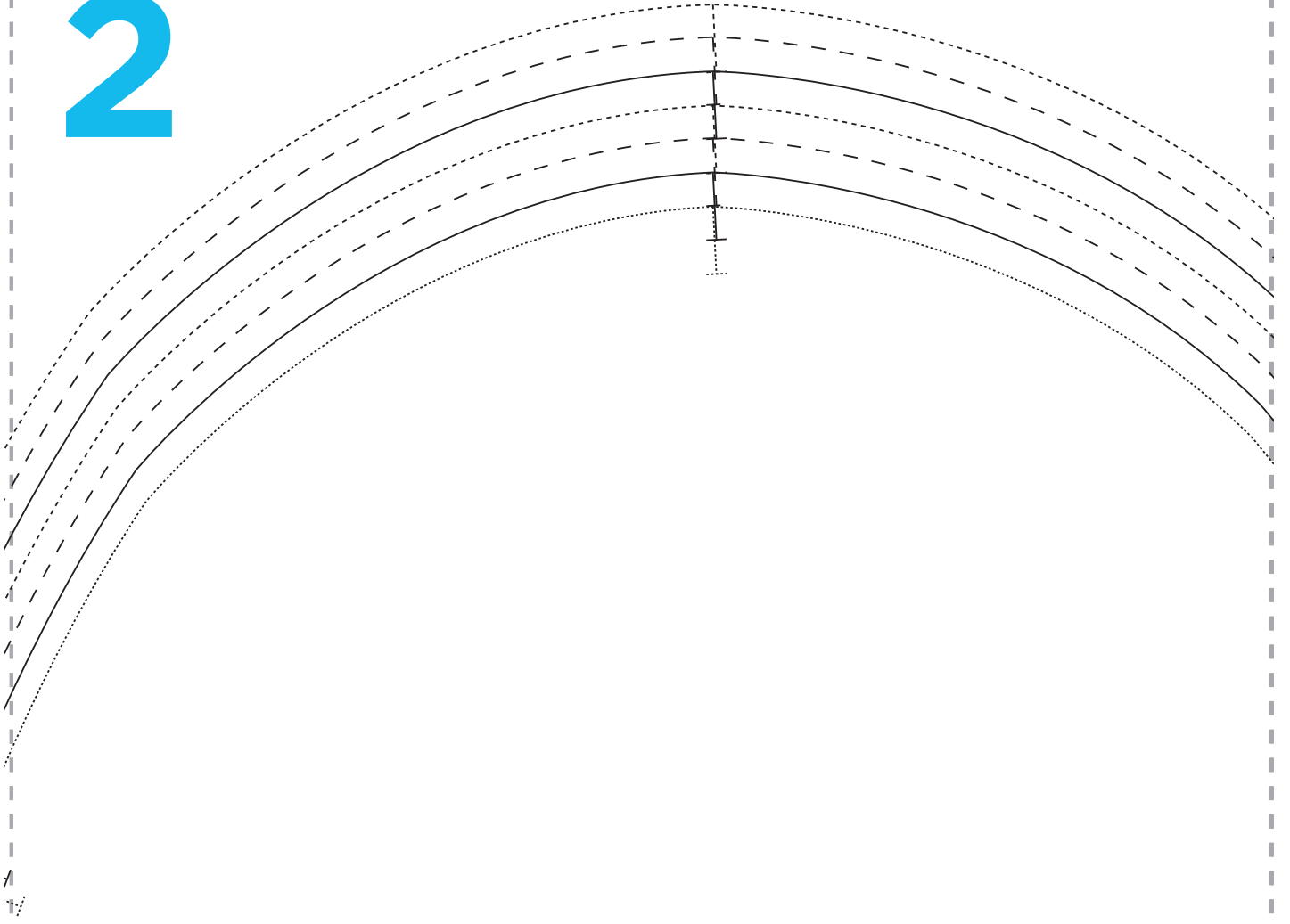


1

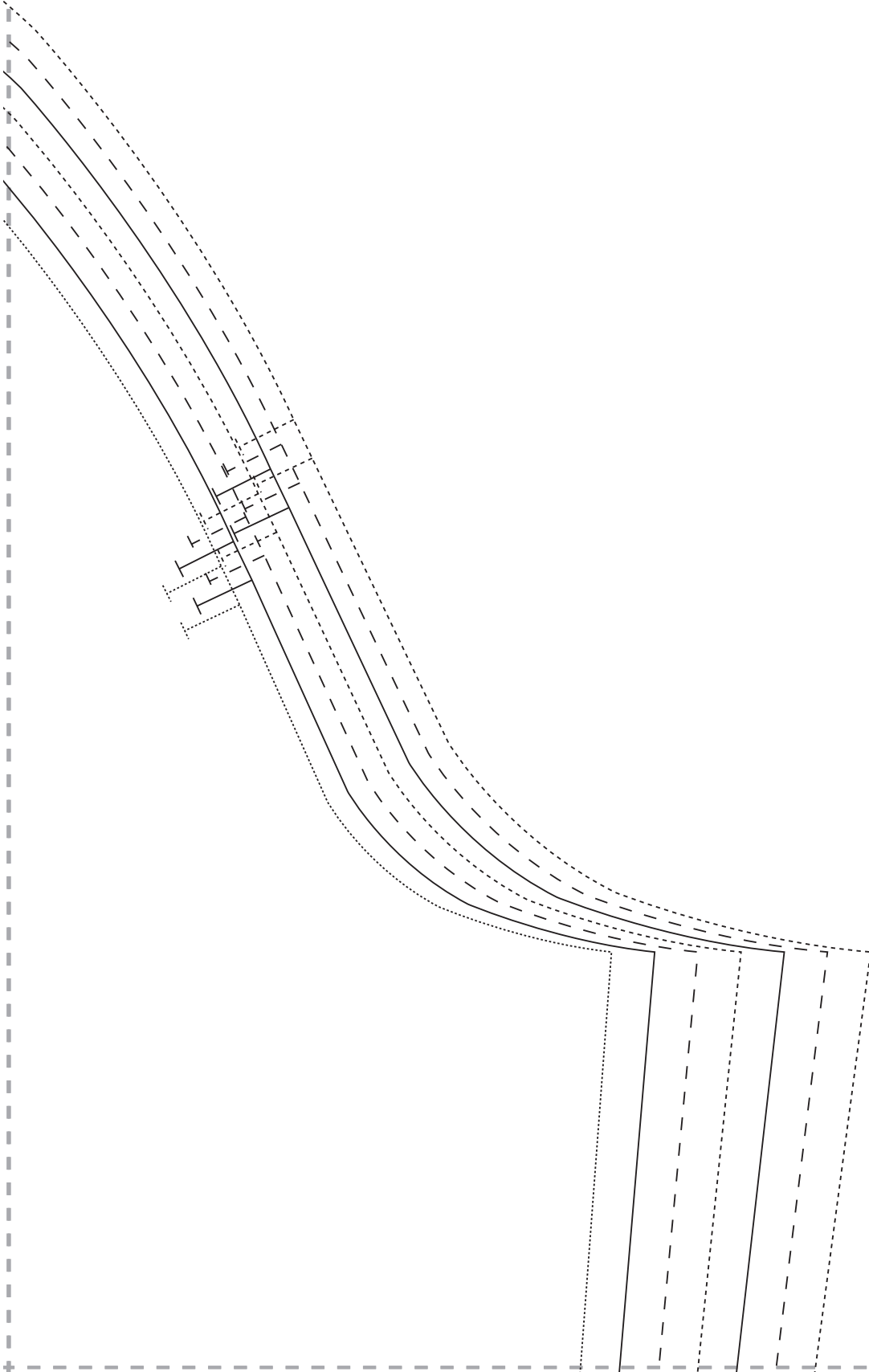
- Size 8
- Size 10
- - - - - Size 12
- Size 14
- Size 16
- - - - - Size 18
- Size 20



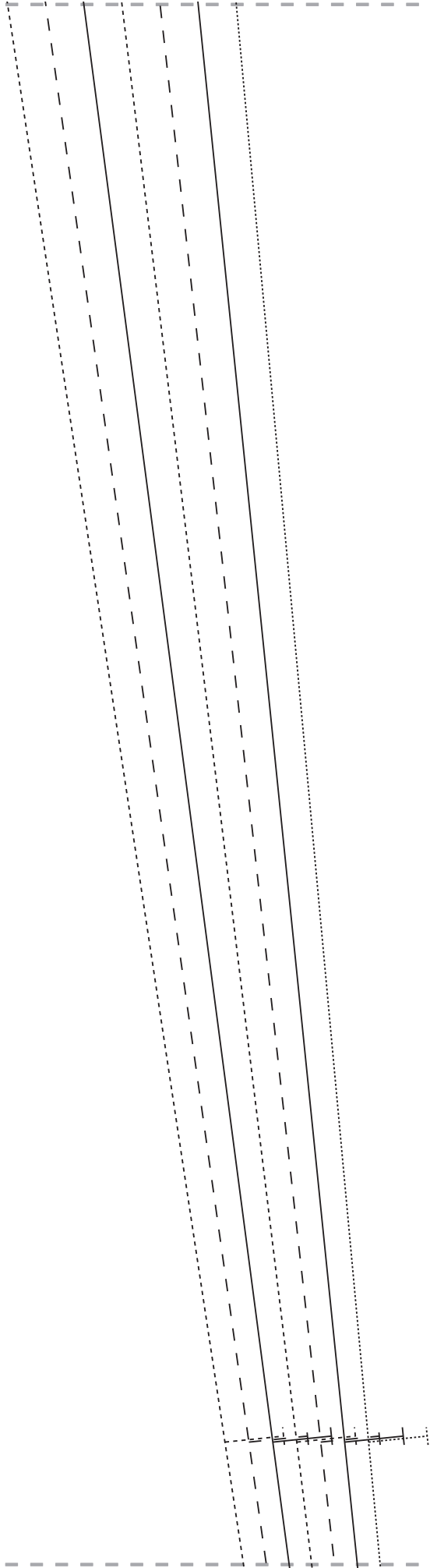
2



3



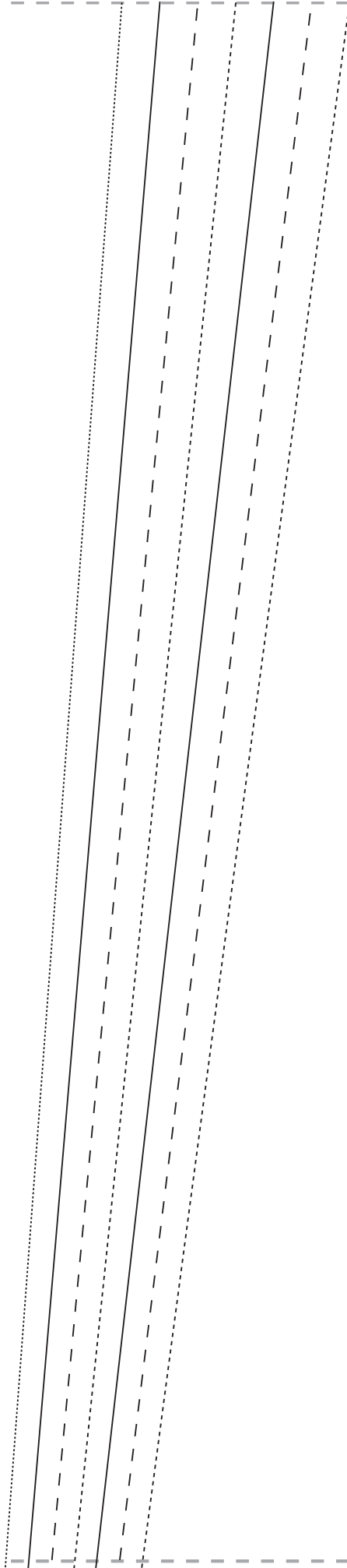
4



5

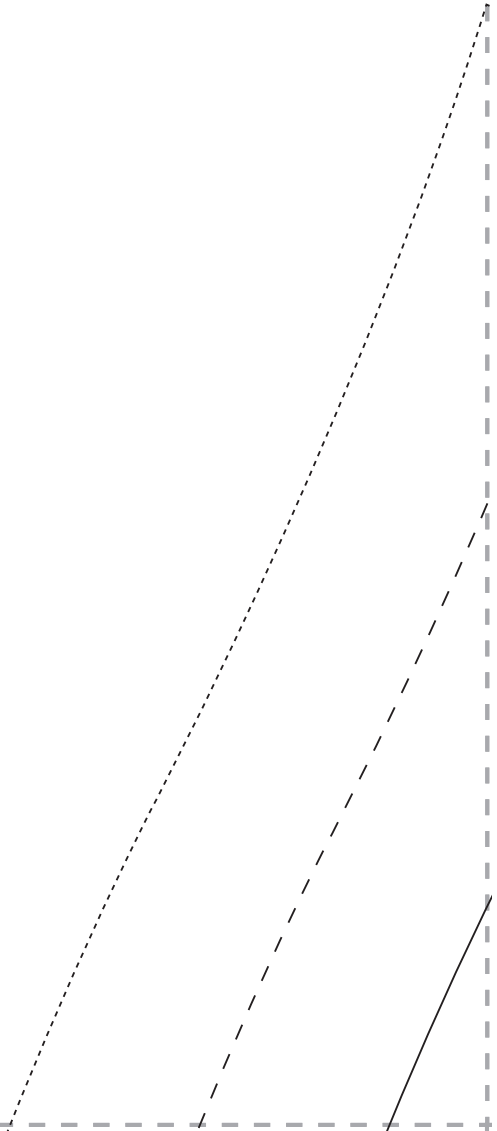
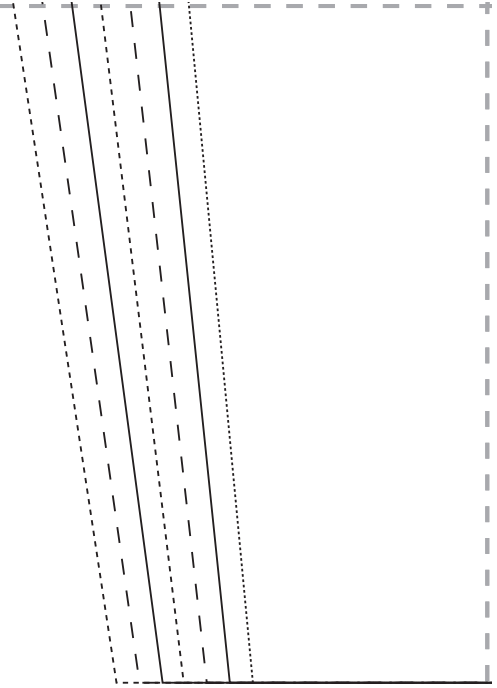
SASHA JACKET
SLEEVE
CUT ONE PAIR

6

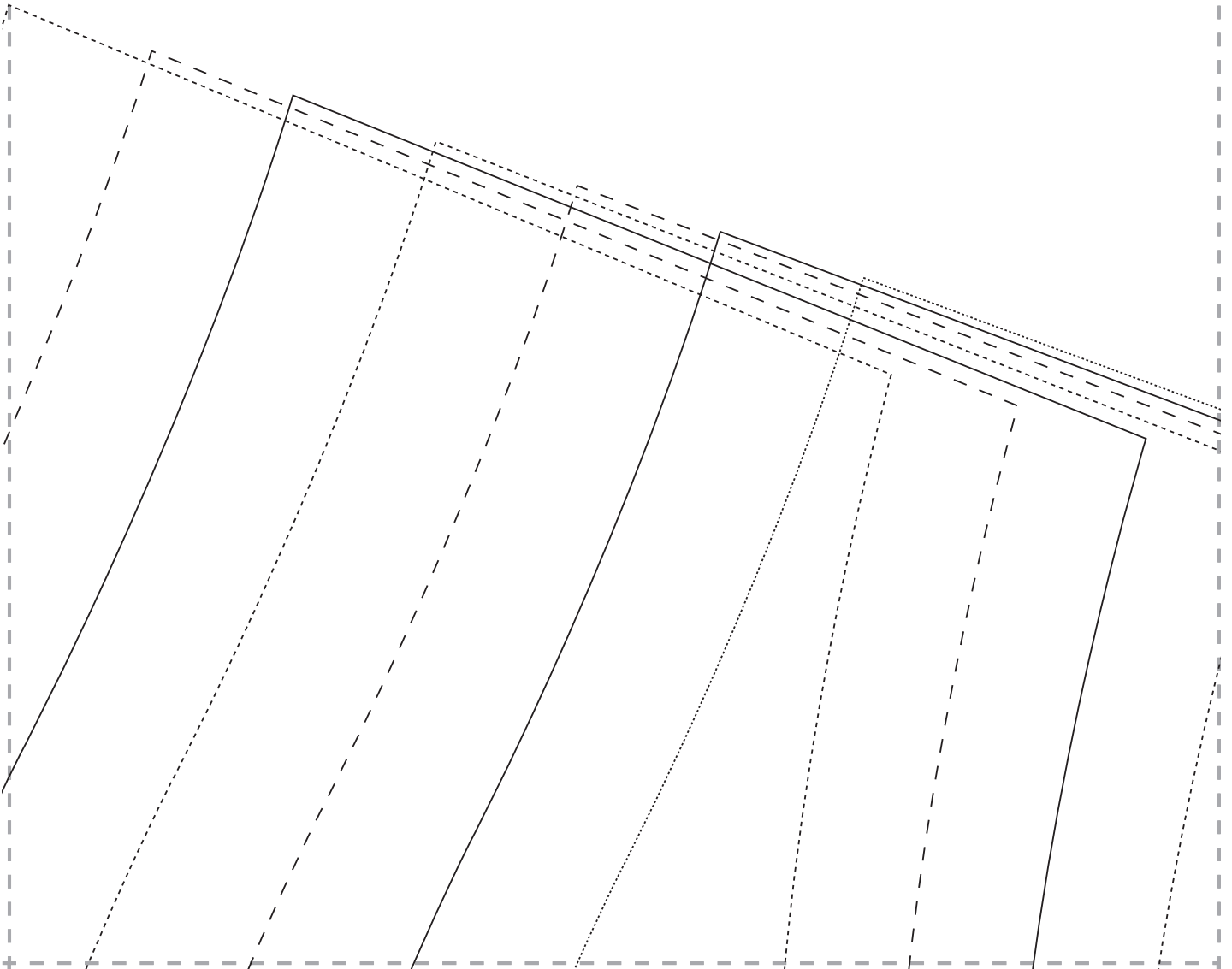


7

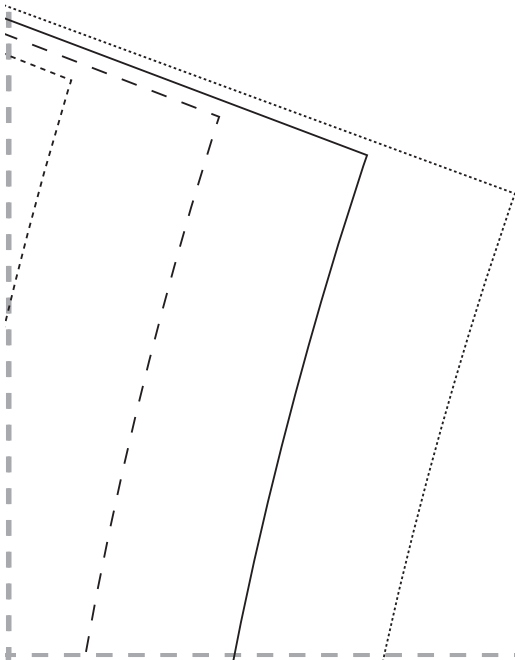
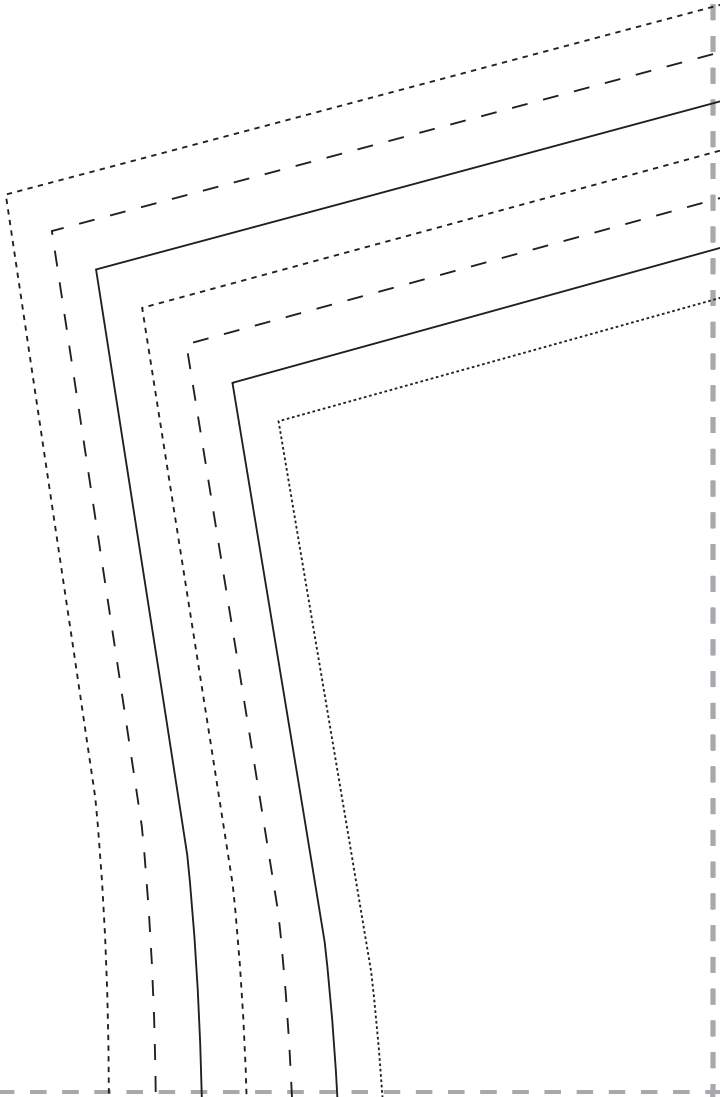
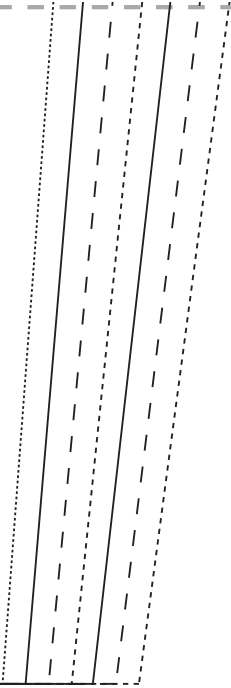
TEST SQUARE
10cm



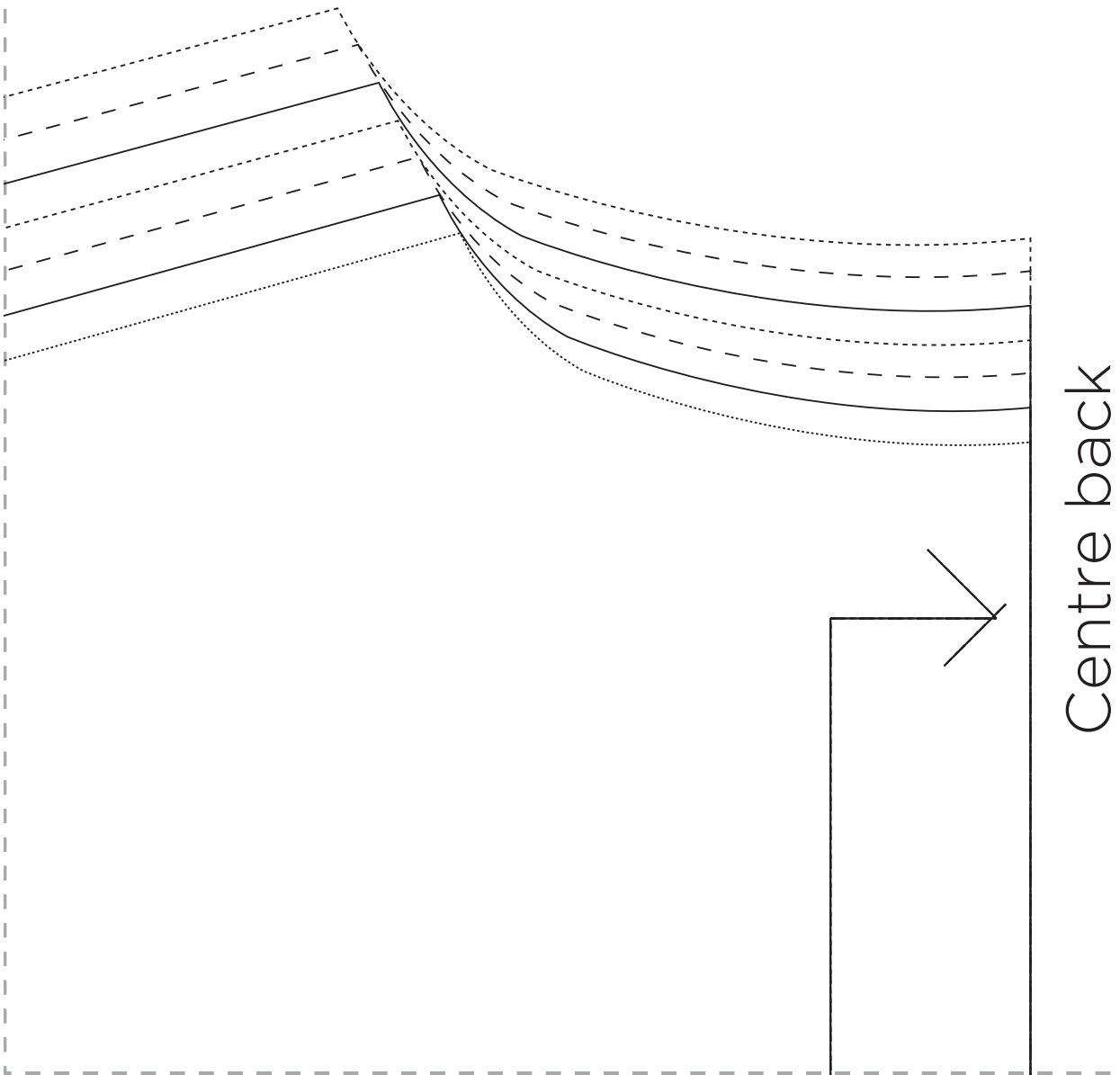
8



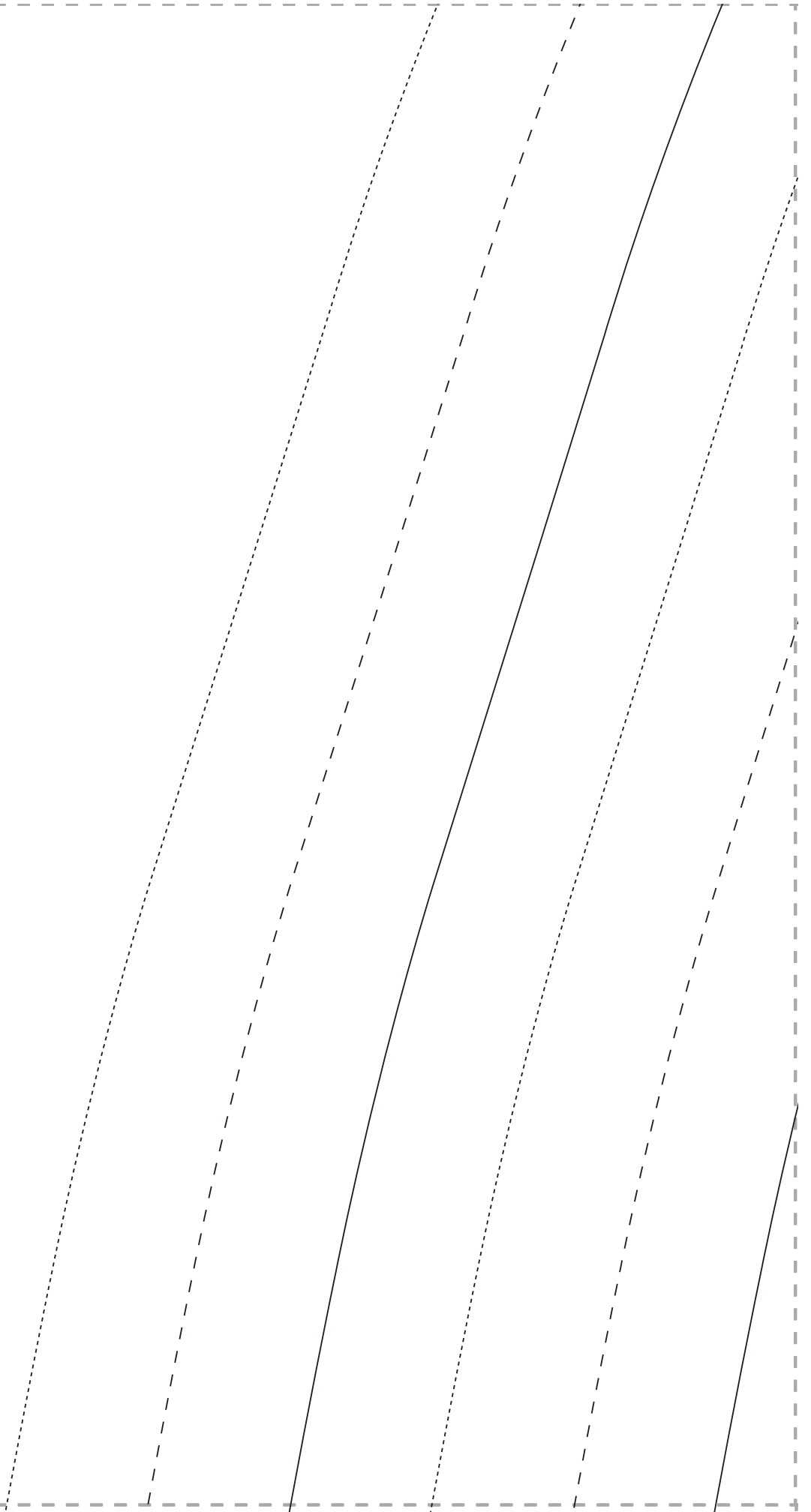
9



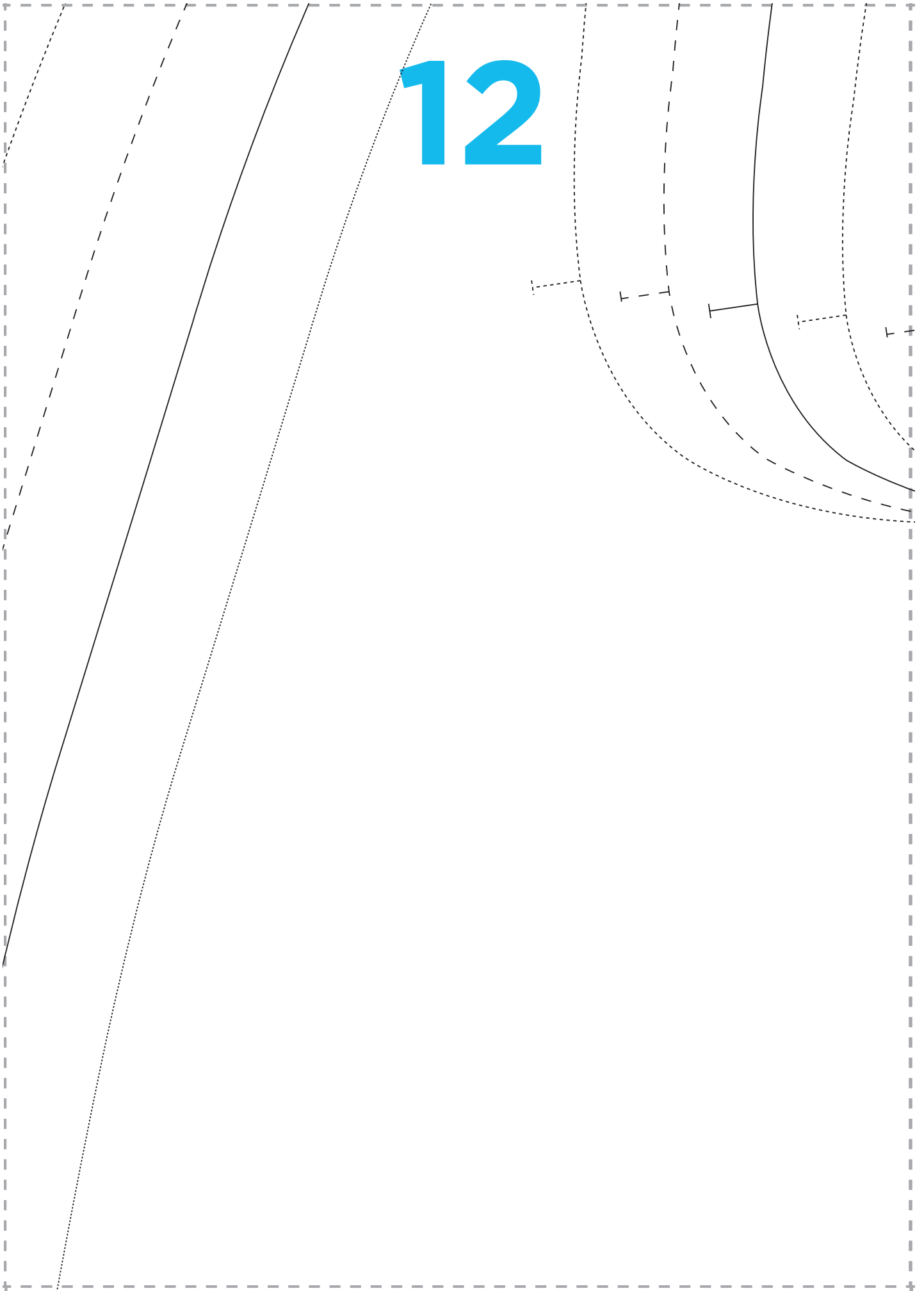
10



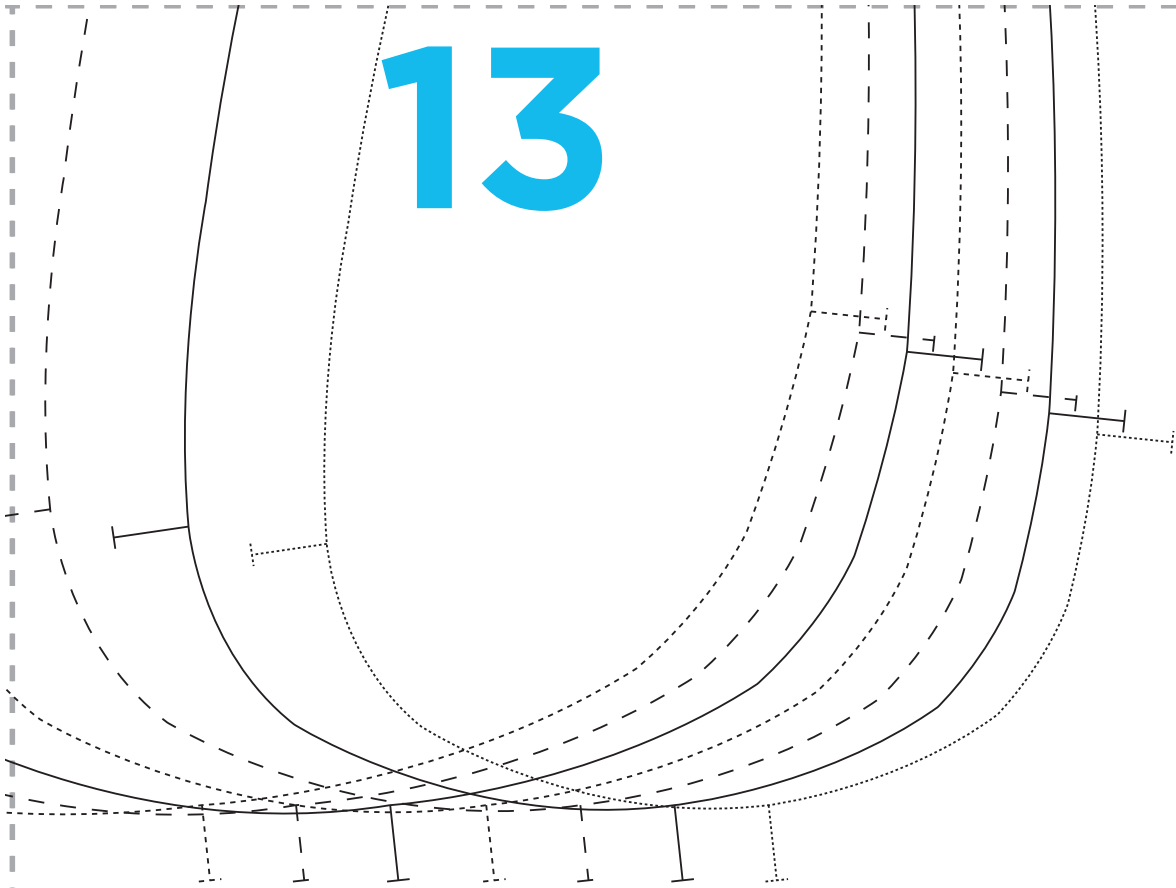
11



12



13



SASHA JACKET
FRONT & BACK
CUT ONE ON THE FOLD

14

Place on fold

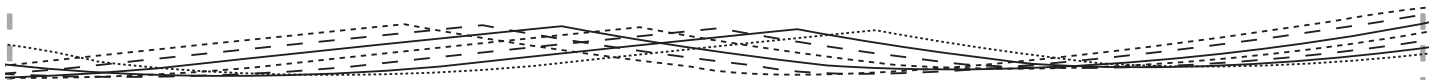
15

Centre front

16



17



18

