

# CHRISTMAS DRESS

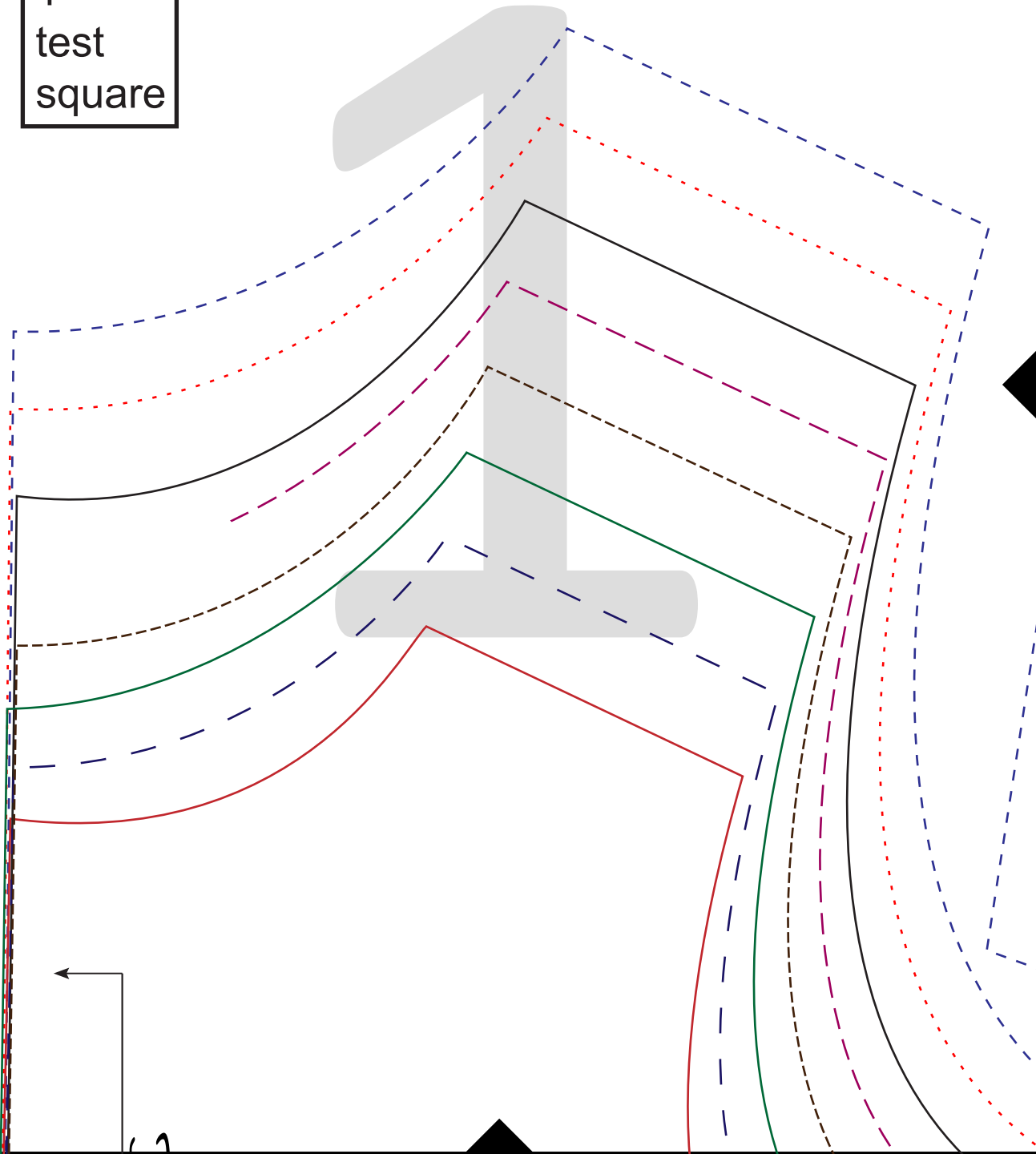
GIRLS DRESS SIZE 2-10

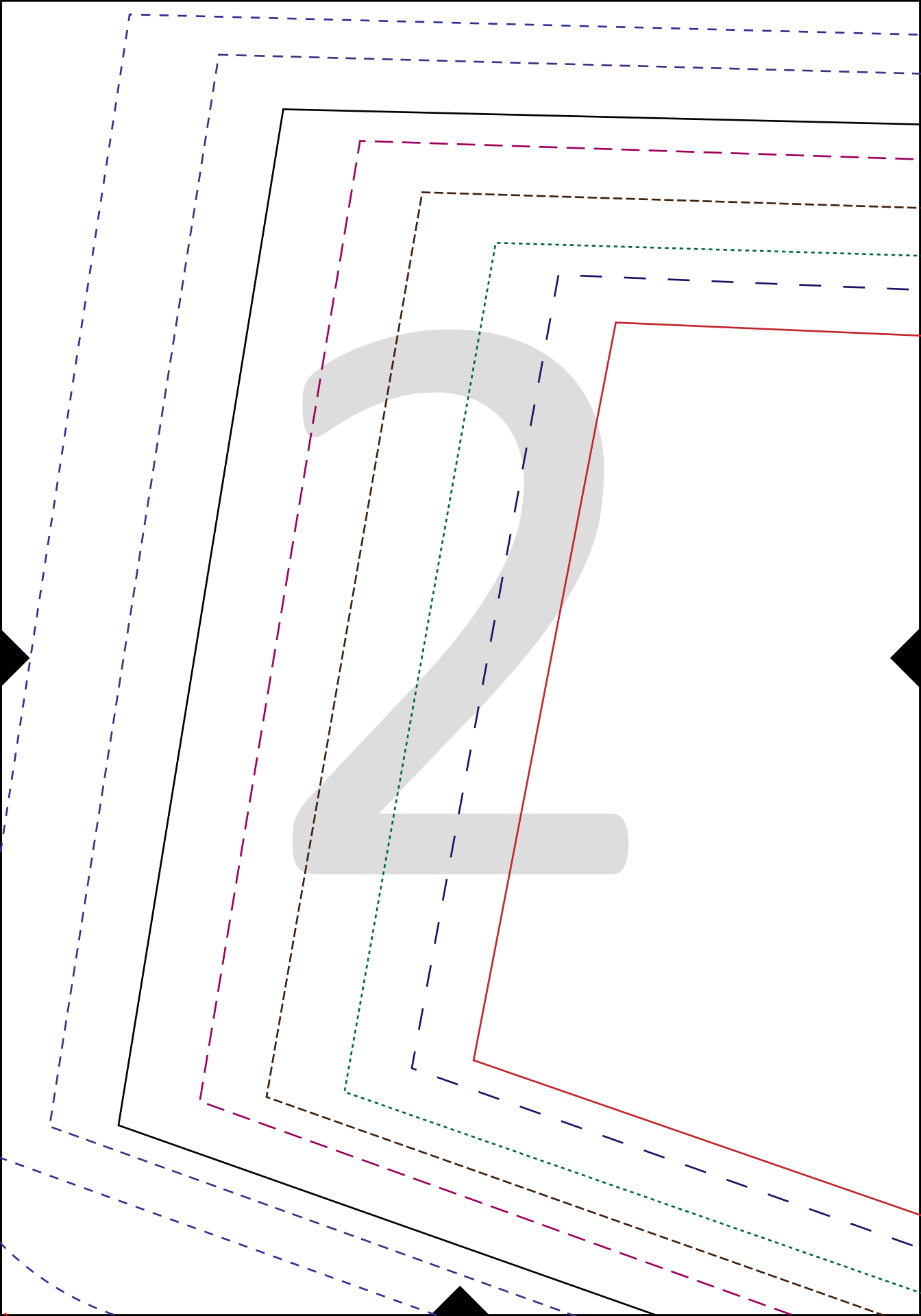
SEE POST FOR MATCHING DOLL DRESS PATTERN

[HTTPS://LIFESEWSAVORY.COM/GIRL-AND-DOLL-MATCHING-DRESS-FREE-SEWING-PATTERNS/](https://lifestylesewvory.com/girl-and-doll-matching-dress-free-sewing-patterns/)

| Size            | 2T | 3T | 4T | 5T | 6T | 7Y | 8Y | 10Y | 12Y |
|-----------------|----|----|----|----|----|----|----|-----|-----|
| Chest in Inches | 20 | 21 | 22 | 23 | 24 | 25 | 26 | 28  | 30  |

1"  
test  
square





Slee

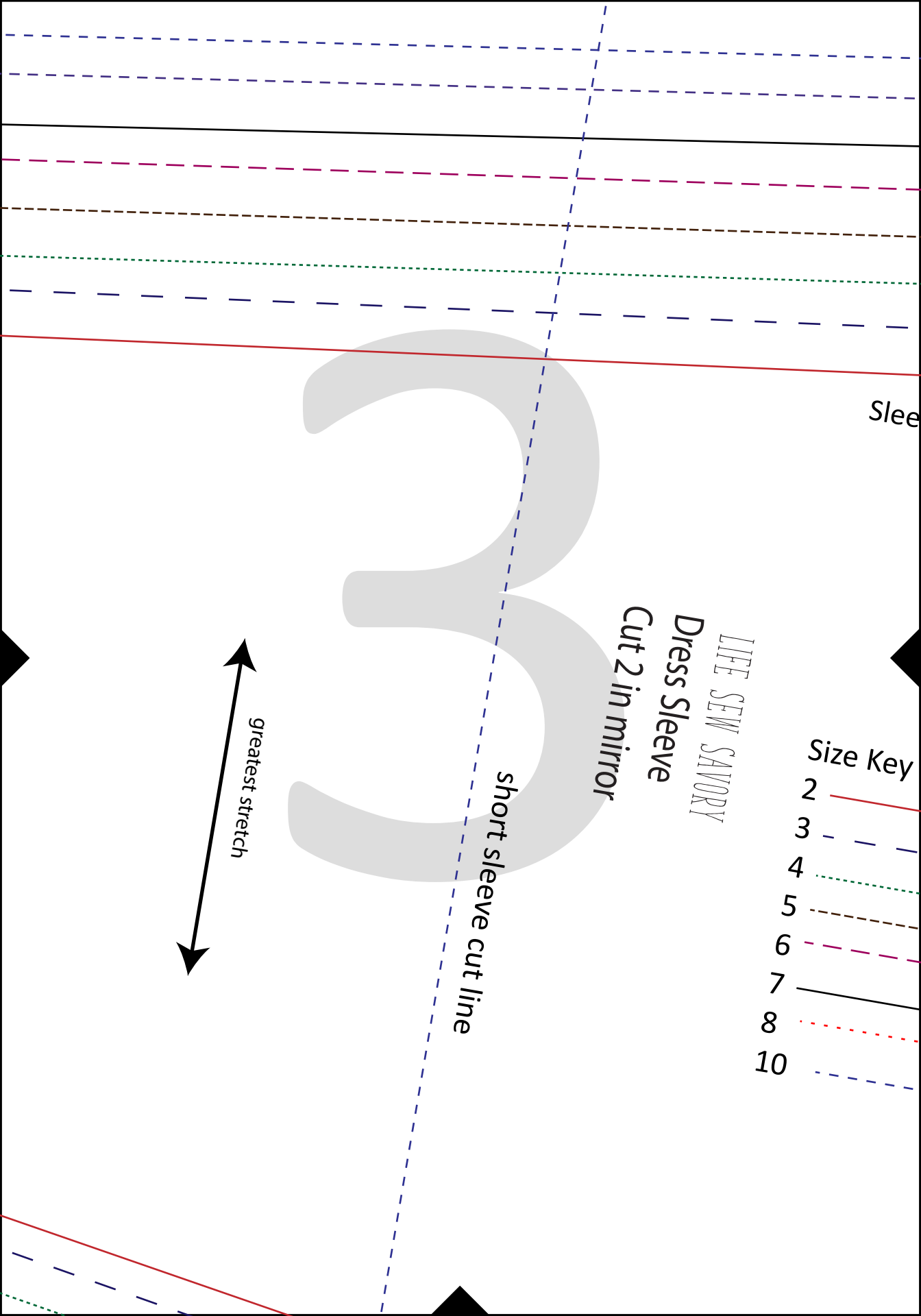
LIFE SEW SAVORY  
Dress Sleeve  
Cut 2 in mirror

short sleeve cut line

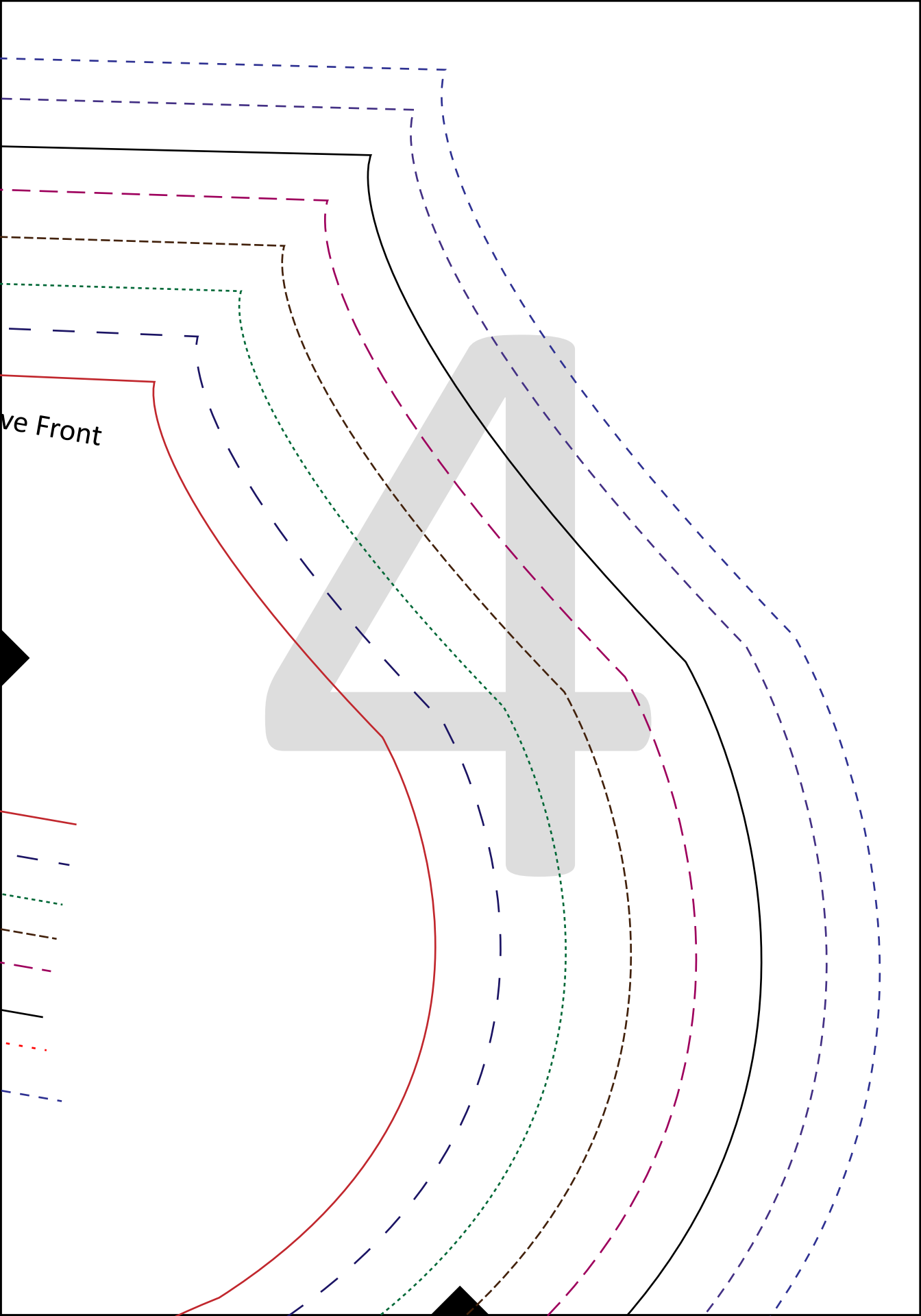
greatest stretch

Size Key

|    |                     |
|----|---------------------|
| 2  | Red solid line      |
| 3  | Blue dashed line    |
| 4  | Green dotted line   |
| 5  | Black dashed line   |
| 6  | Magenta dashed line |
| 7  | Black solid line    |
| 8  | Red dotted line     |
| 10 | Blue dashed line    |



ve Front

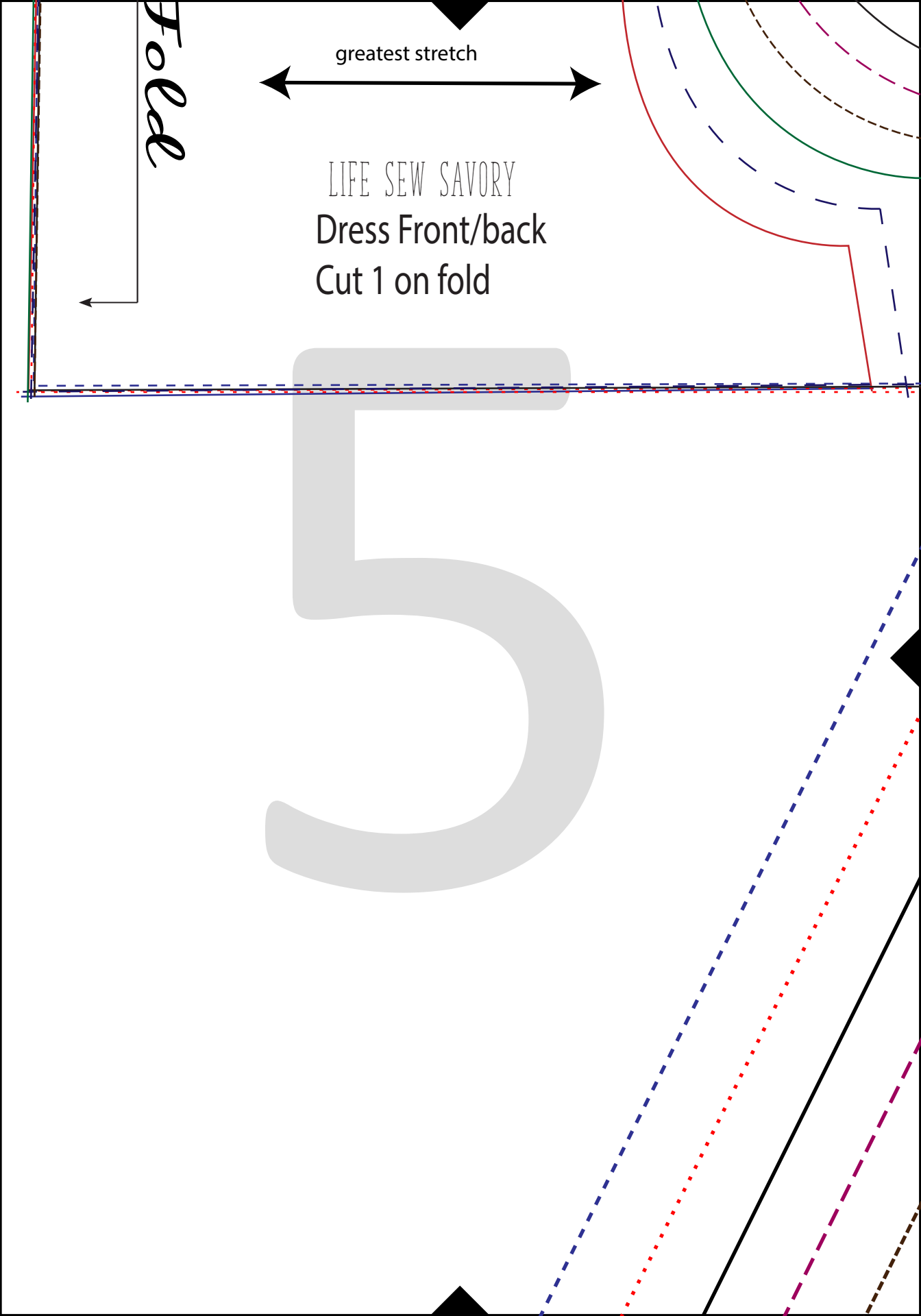


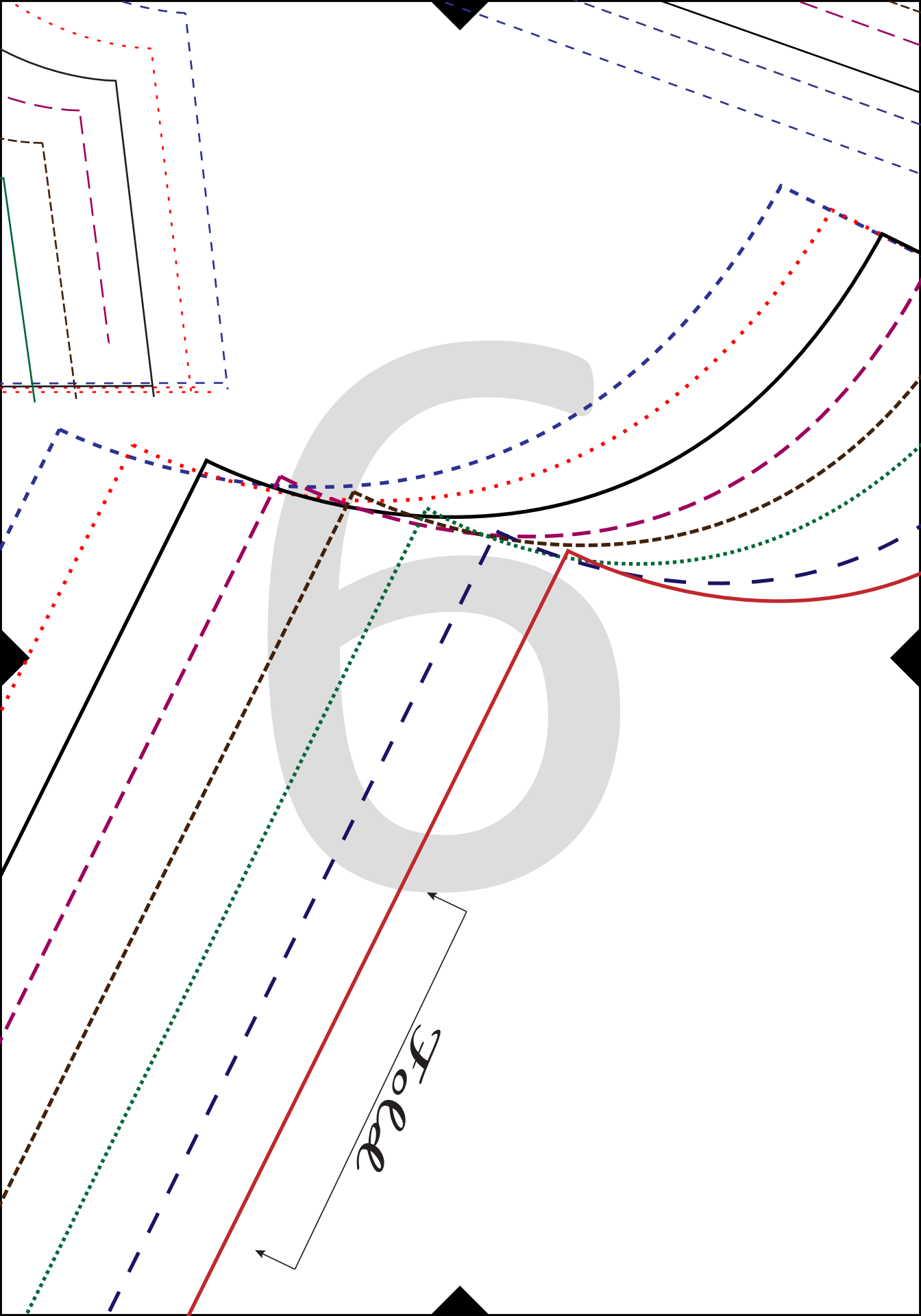
greatest stretch

*Fold*

LIFE SEW SAVORY  
Dress Front/back  
Cut 1 on fold

5





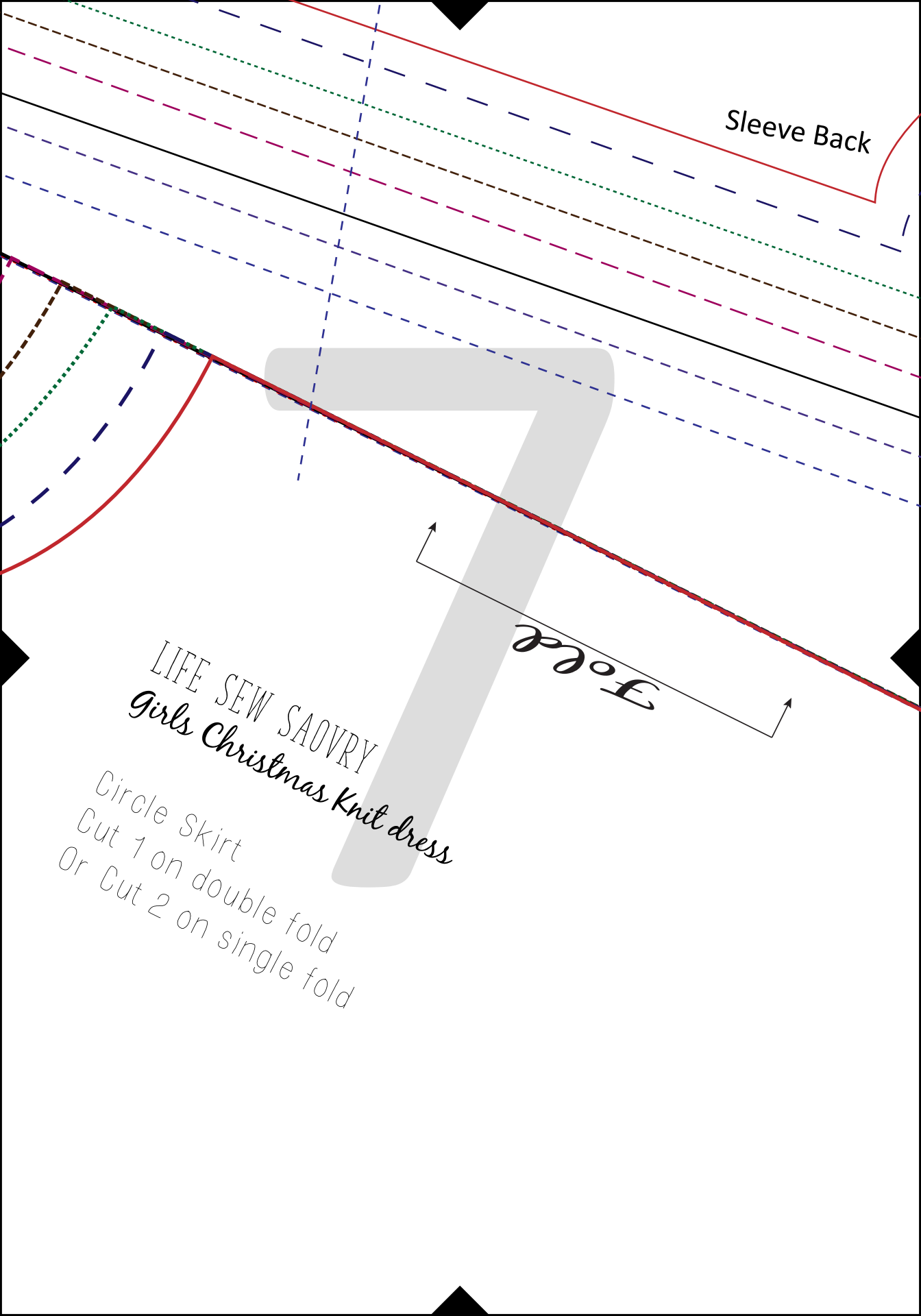
Force

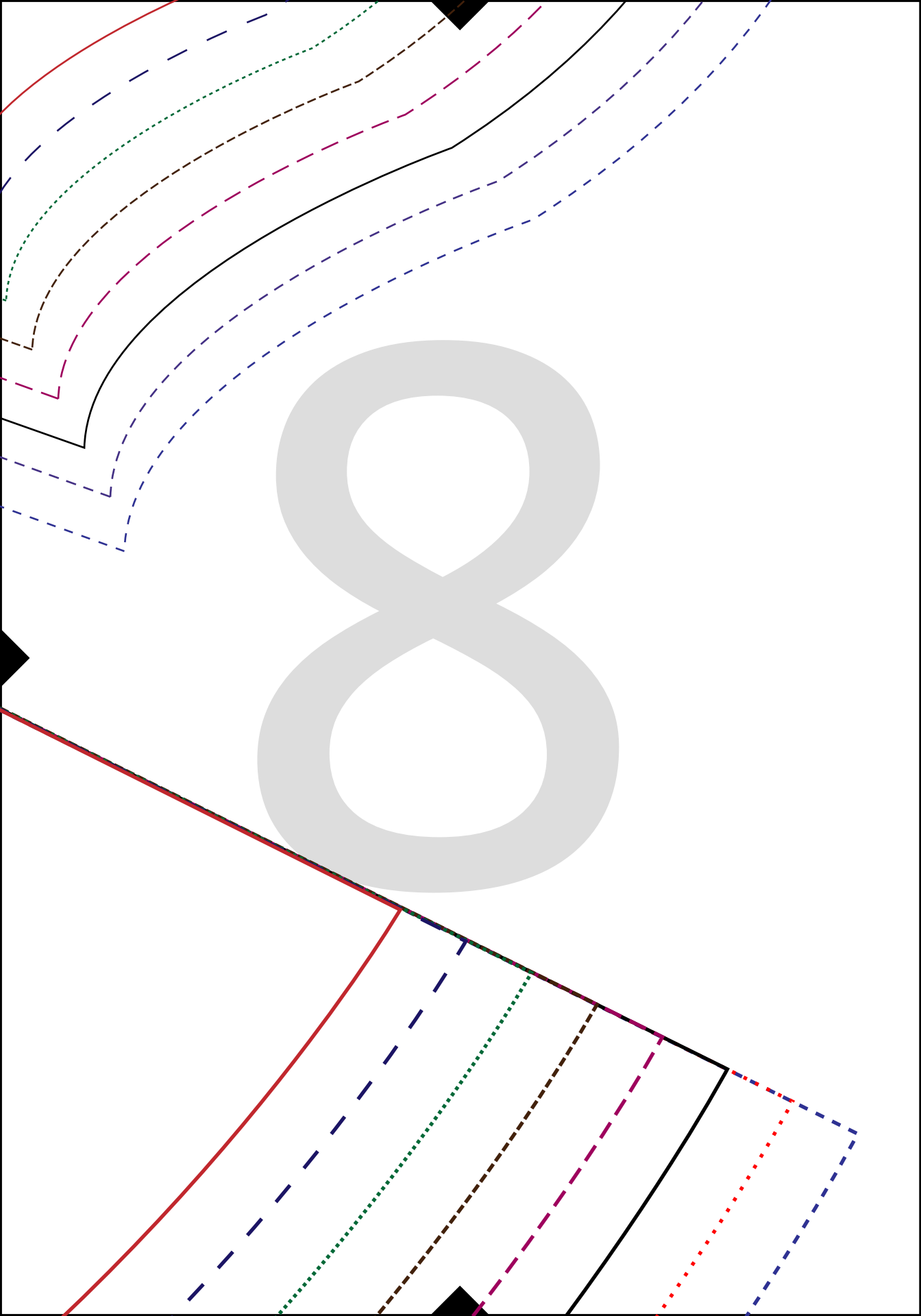
Sleeve Back

Fold

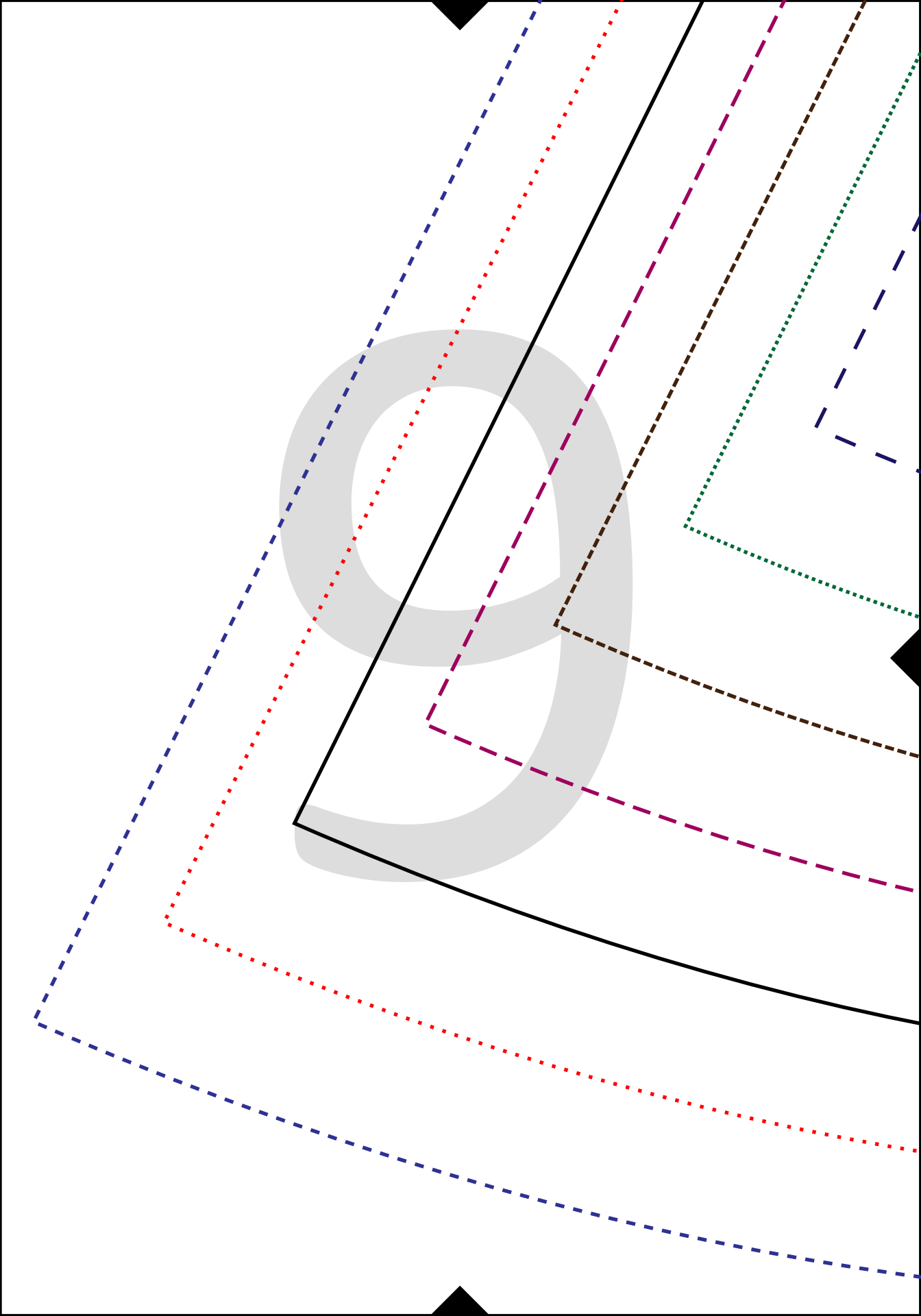
LIFE SEW SAOVRY  
*Girls Christmas Knit dress*

Circle Skirt  
Cut 1 on double fold  
Or Cut 2 on single fold

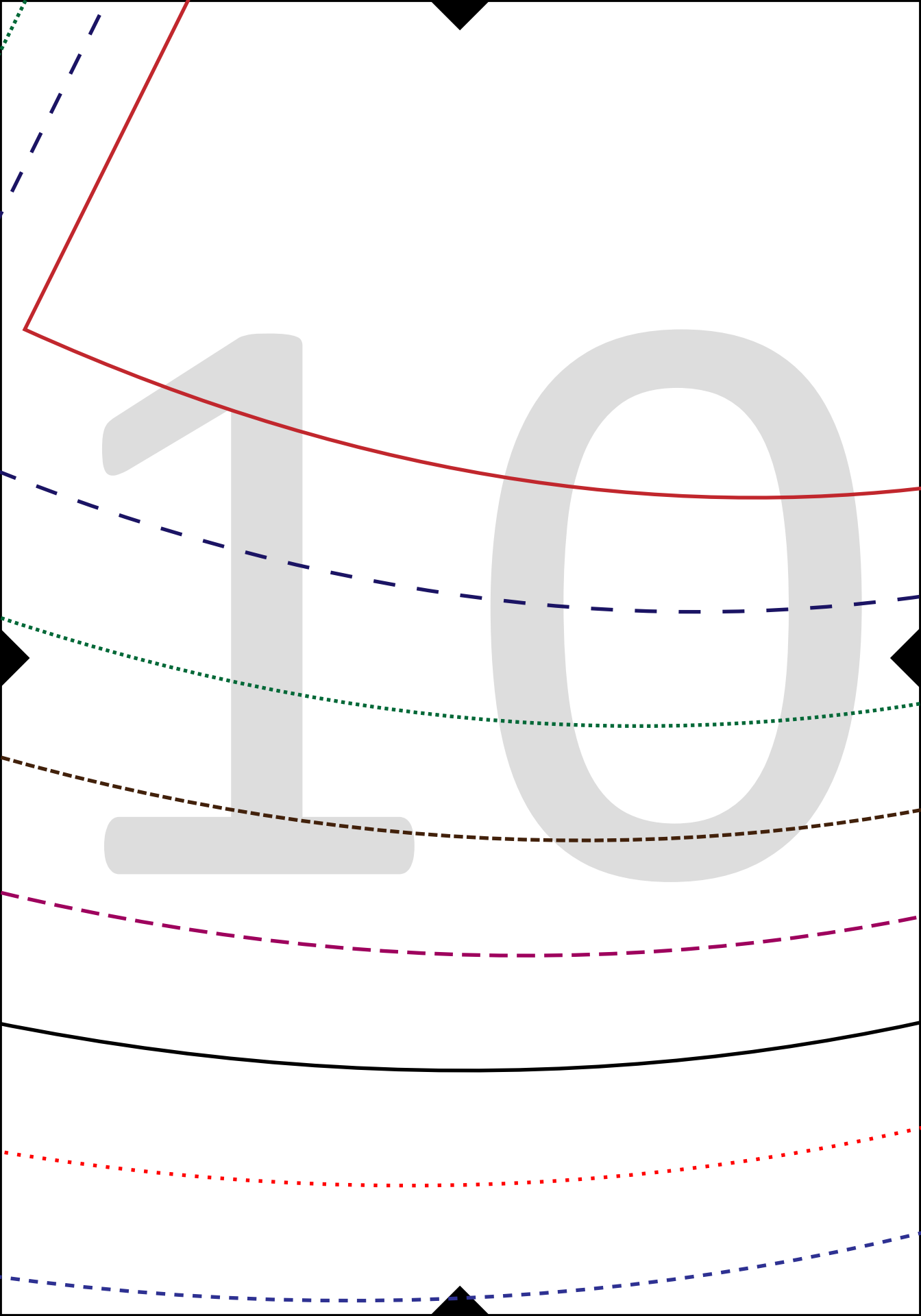


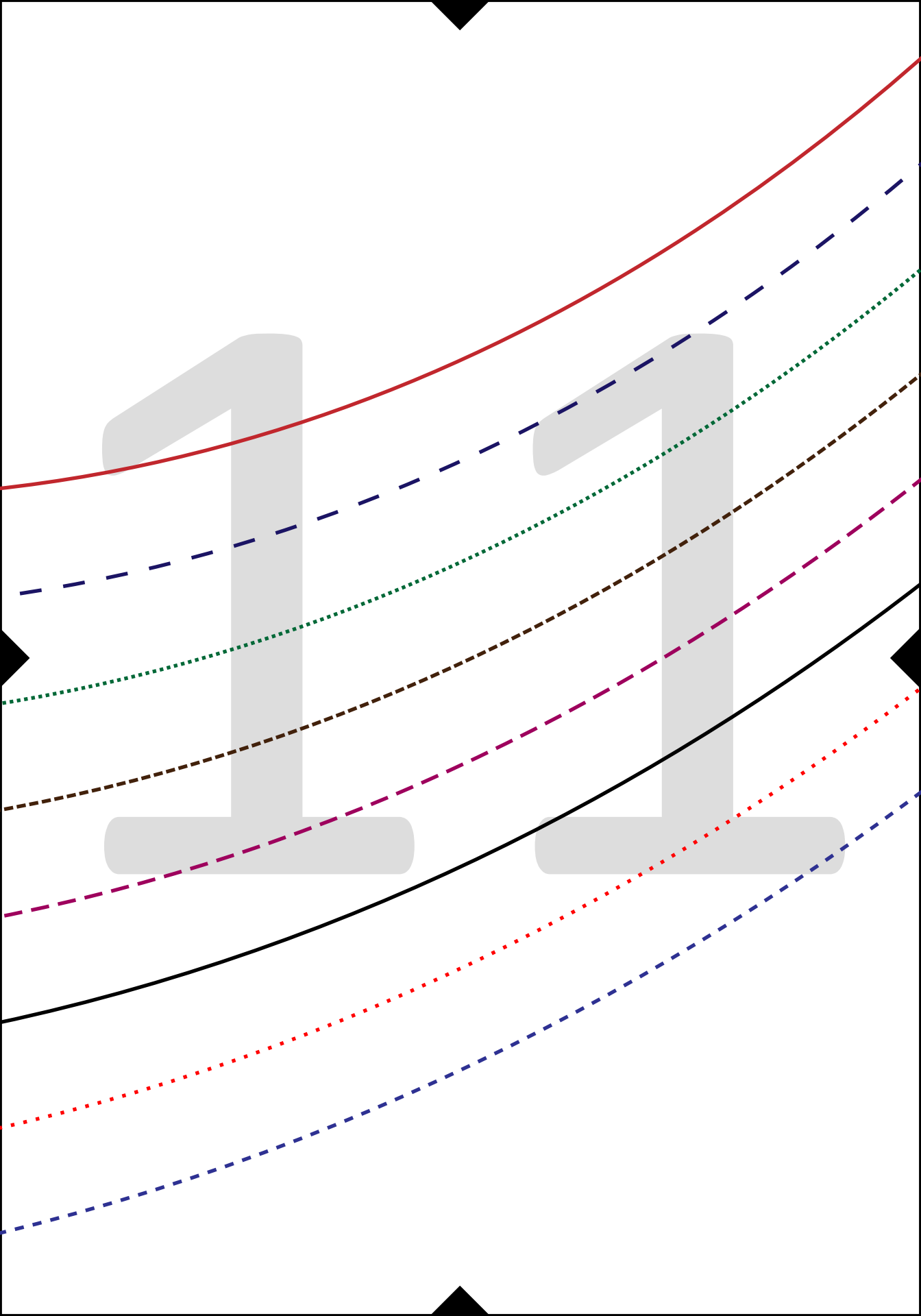






10





1

2