

Simply Sewing

FRESH IDEAS WITH FABRIC

HOW TO PRINT THIS PATTERN

Print out this 30-page PDF on to A4 paper. Trim away the shaded border from each page and position the pages as below to assemble the pattern...

The pattern pieces are arranged in a 5x6 grid:

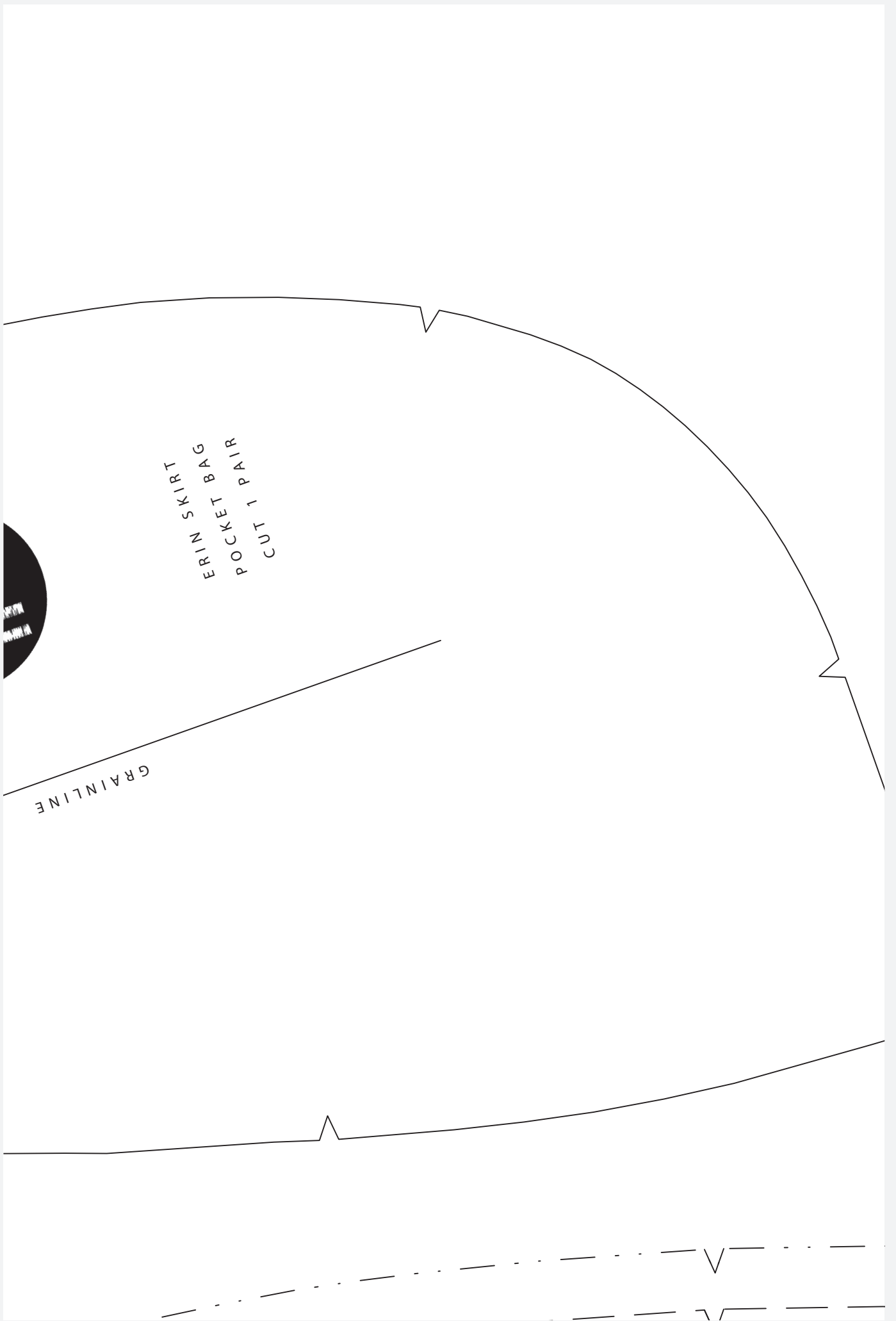
- Row 1:** Piece 1 (left), Piece 2 (right), Piece 3 (center), Piece 4 (left), Piece 5 (right).
- Row 2:** Piece 6 (left), Piece 7 (right), Piece 8 (center), Piece 9 (right), Piece 10 (right).
- Row 3:** Piece 11 (left), Piece 12 (center), Piece 13 (center), Piece 14 (right), Piece 15 (right).
- Row 4:** Piece 16 (left), Piece 17 (center), Piece 18 (center), Piece 19 (right), Piece 20 (right).
- Row 5:** Piece 21 (left), Piece 22 (center), Piece 23 (center), Piece 24 (right), Piece 25 (right).
- Row 6:** Piece 26 (left), Piece 27 (center), Piece 28 (center), Piece 29 (right), Piece 30 (right).

Technical details on the pieces include:

- SEW OVER IT:** Indicated on pieces 1, 2, 3, 4, 5, 6, 8, 9, 10, 11, 12, 13, 14, 15, 16, 17, 18, 19, 20, 21, 22, 23, 24, 25, 26, 27, 28, 29, 30.
- FOLDING LINE:** Indicated on pieces 1, 2, 3, 4, 5, 6, 7, 8, 9, 10, 11, 12, 13, 14, 15, 16, 17, 18, 19, 20, 21, 22, 23, 24, 25, 26, 27, 28, 29, 30.
- CENTER BACK:** Indicated on pieces 1, 2, 3, 4, 5, 6, 7, 8, 9, 10, 11, 12, 13, 14, 15, 16, 17, 18, 19, 20, 21, 22, 23, 24, 25, 26, 27, 28, 29, 30.
- SIDE SEAM:** Indicated on pieces 1, 2, 3, 4, 5, 6, 7, 8, 9, 10, 11, 12, 13, 14, 15, 16, 17, 18, 19, 20, 21, 22, 23, 24, 25, 26, 27, 28, 29, 30.
- LENGTH:** Indicated on pieces 1, 2, 3, 4, 5, 6, 7, 8, 9, 10, 11, 12, 13, 14, 15, 16, 17, 18, 19, 20, 21, 22, 23, 24, 25, 26, 27, 28, 29, 30.

Size charts are included on pieces 6 and 30.





ERIN SKIRT
POCKET BAG
POCKET PAIR
CUT

GRAINLINE

ERIN SKIRT
WAISTBAND
CUT ONE



E

SIZE 8

SIZE 10

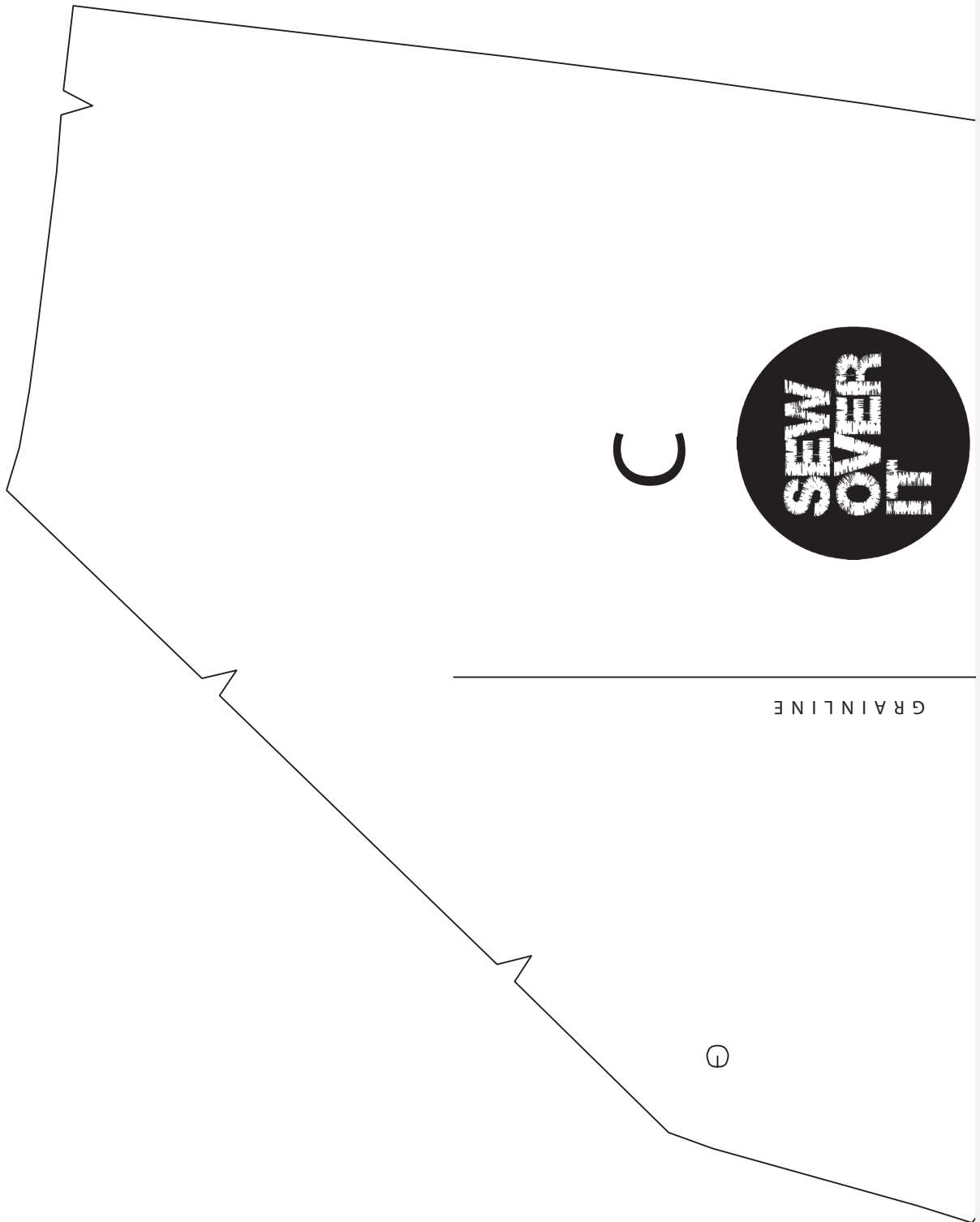
SIZE 12

SIZE 14

SIZE 16

SIZE 18

SIZE 20



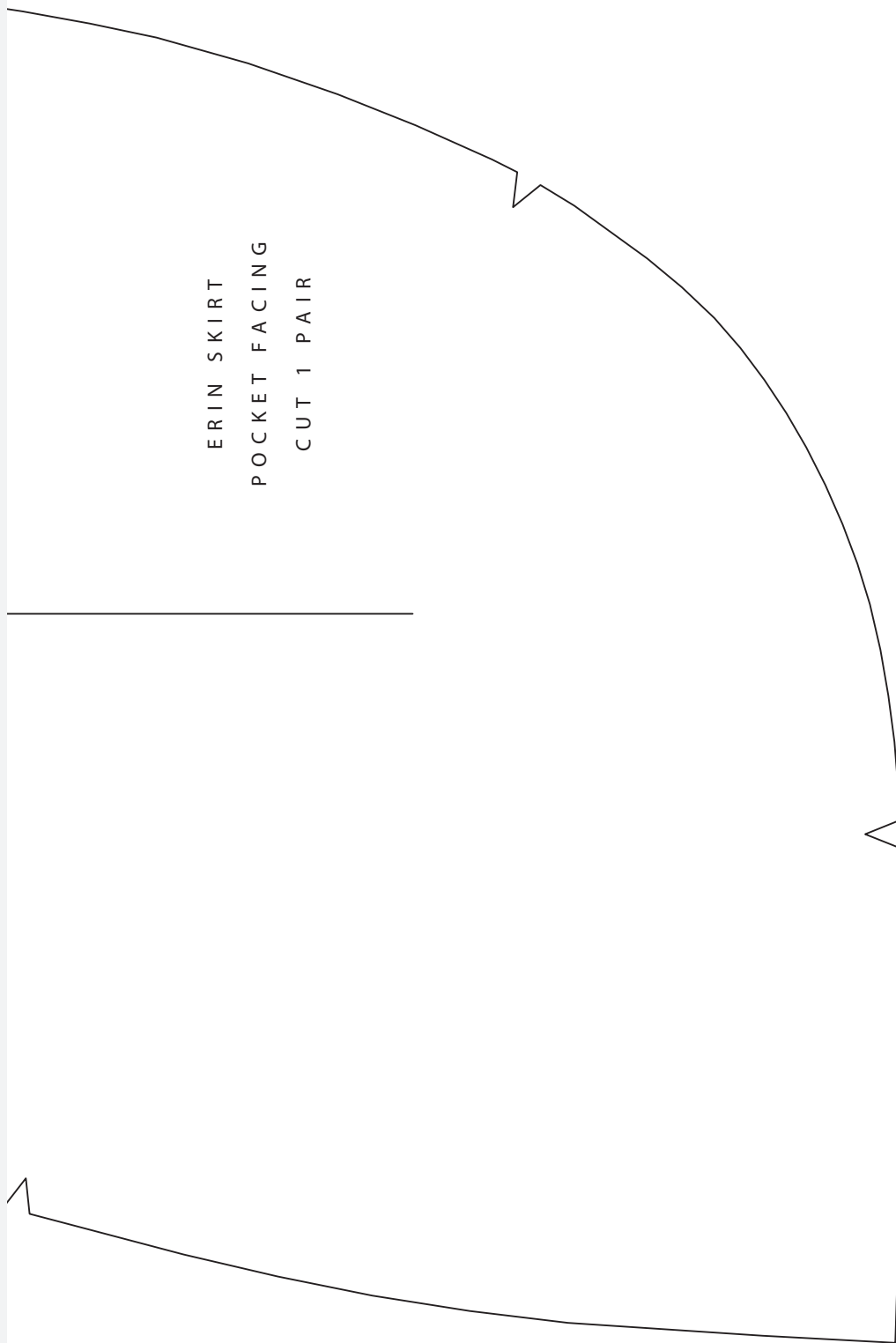
GRAINLINE

①

C



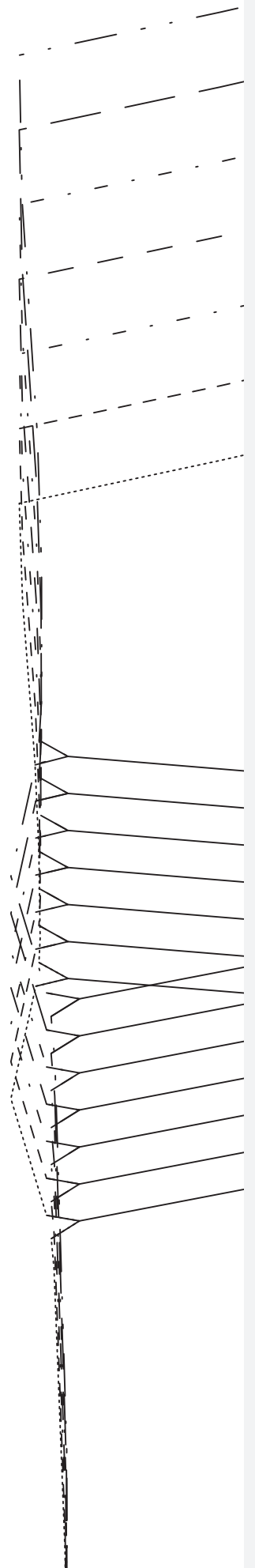
ERIN SKIRT
POCKET FACING
CUT 1 PAIR

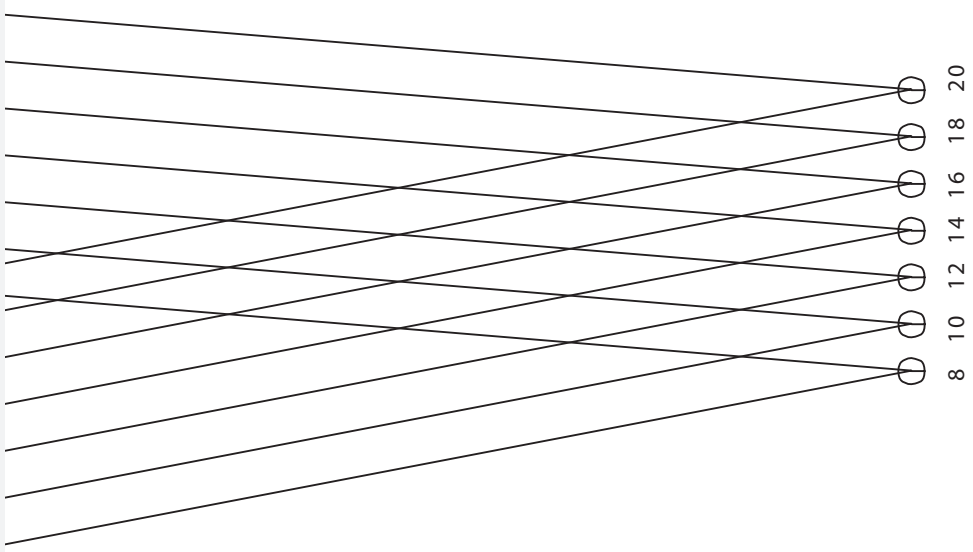
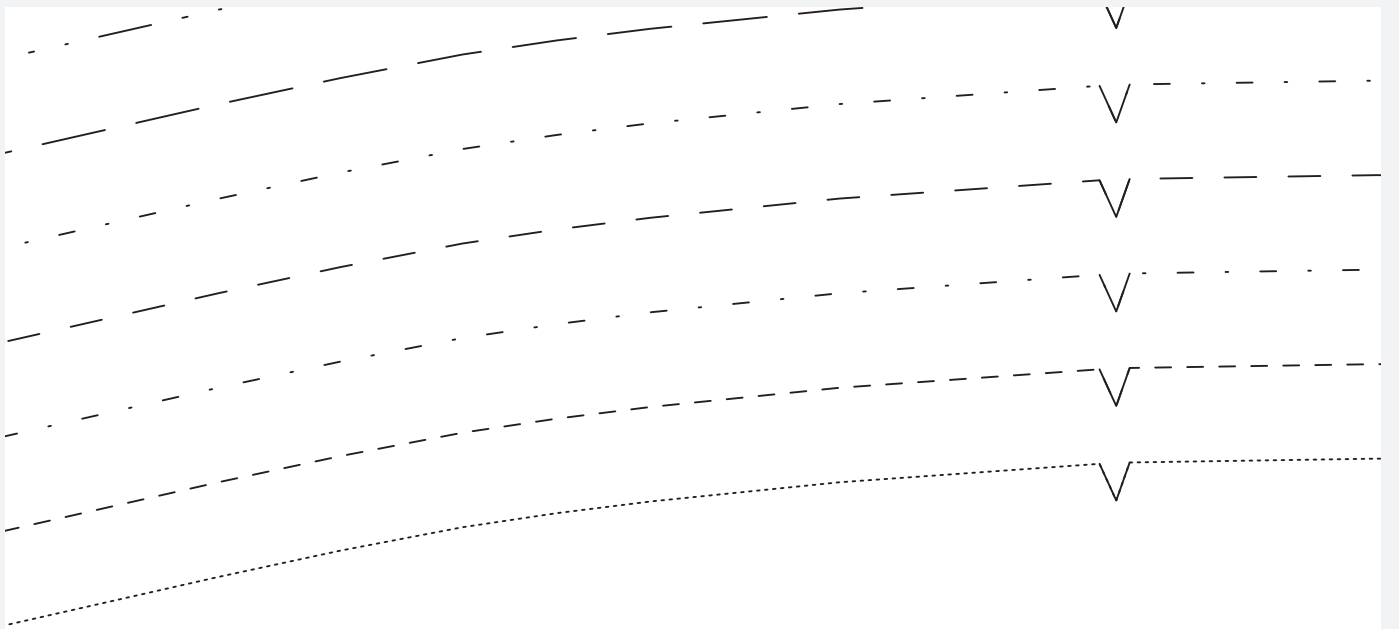


ALONG

— SIZE CHART

—	SIZE 20
—	SIZE 18
—	SIZE 16
—	SIZE 14
—	SIZE 12
—	SIZE 10
—	SIZE 8





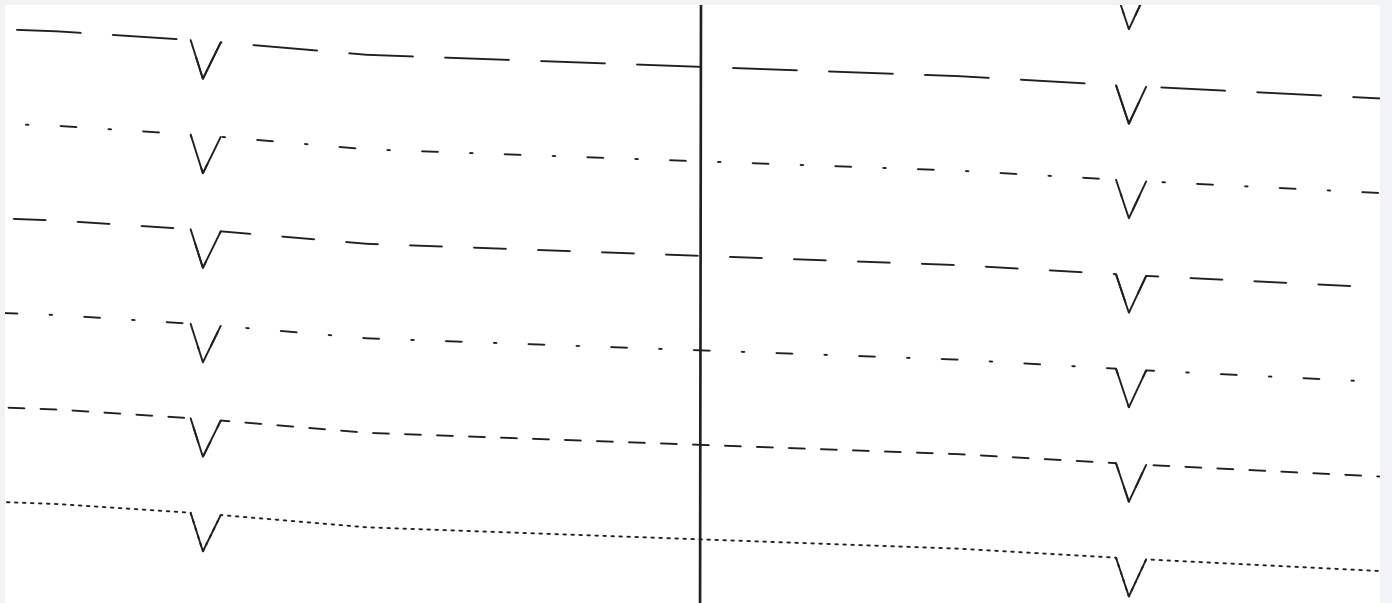
B



GRAINLINE

ERIN SKIRT
BACK SKIRT
CUT 1 ON FOLD

SHORT VERSION



SIZE 20

SIZE 18

SIZE 16

SIZE 14

SIZE 12

SIZE 10

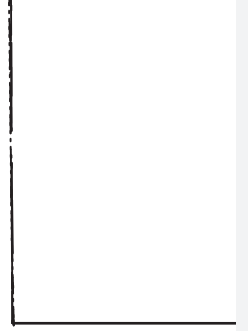
SIZE 8

LONG VERSION



SKIRT SEW

(Match pattern pieces
along dashed lines)

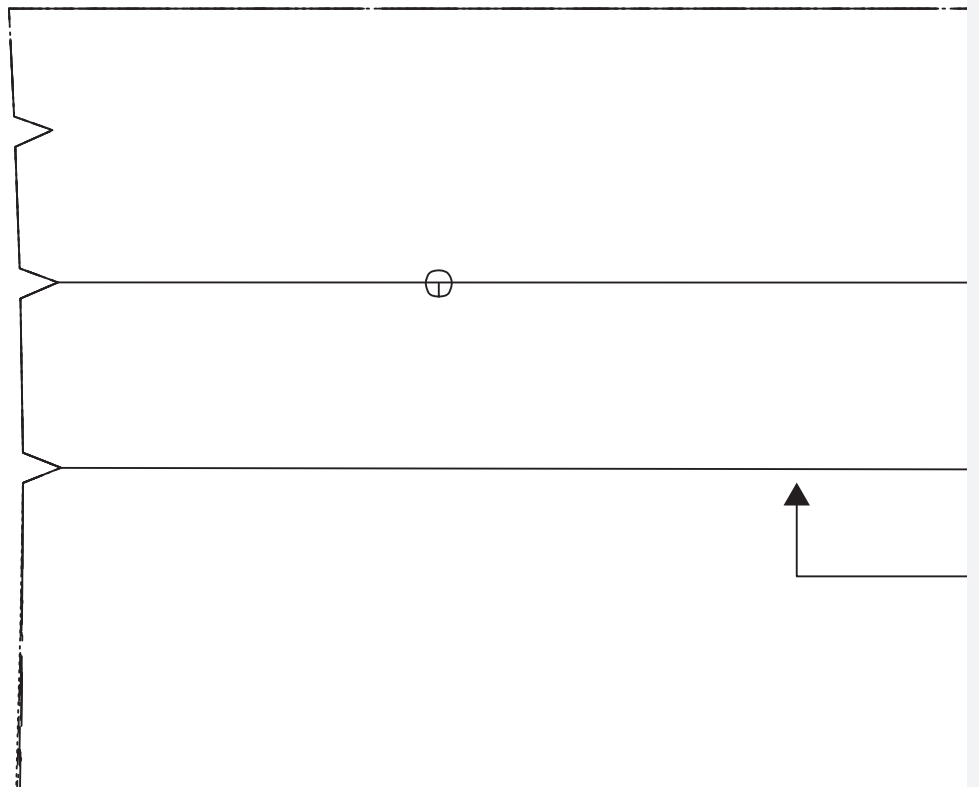
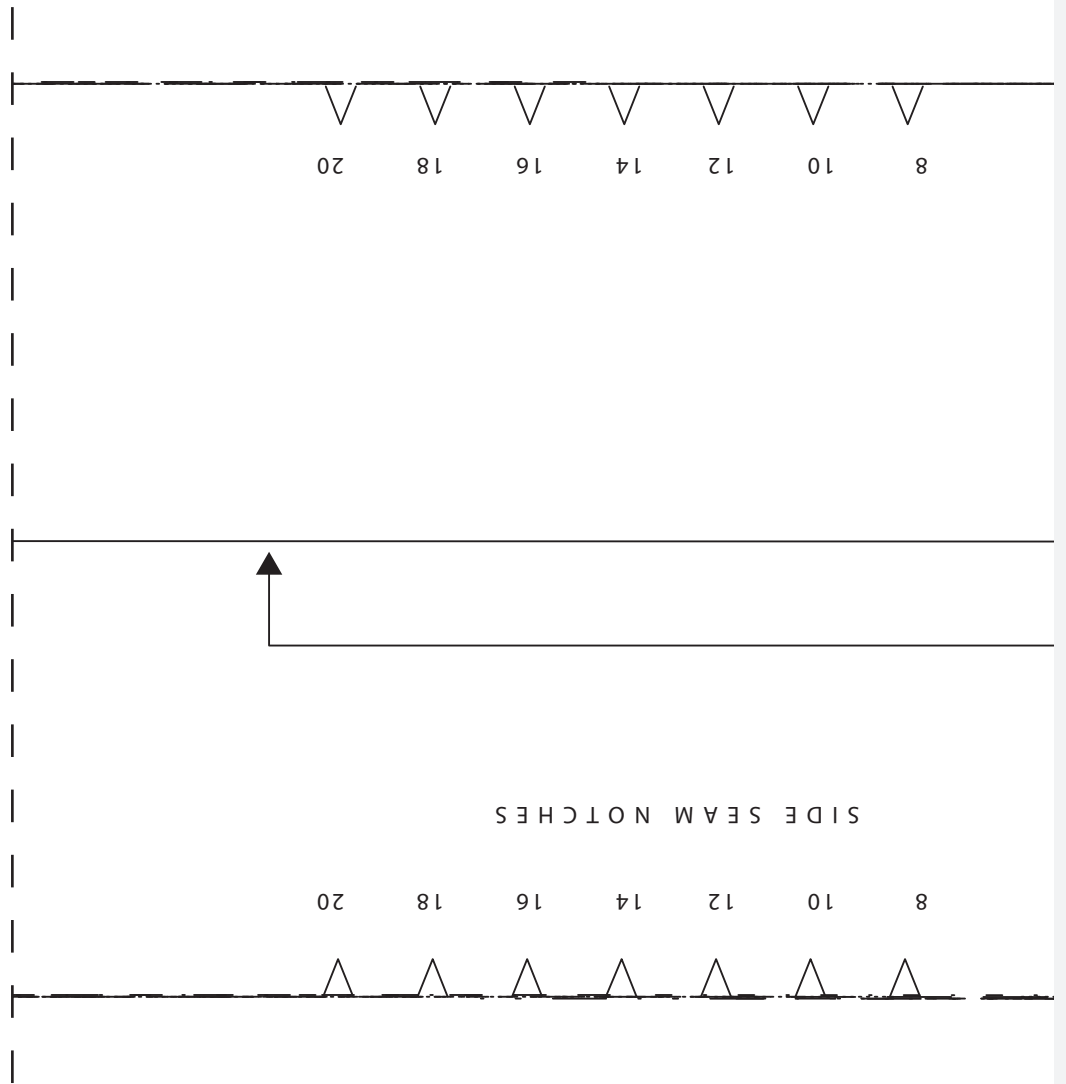




CENTRE BACK

FOLDLINE





E



ERIN SKIRT
WAISTBAND
CUT ONE

FOLDLINE

CENTRE BACK
NOTCH



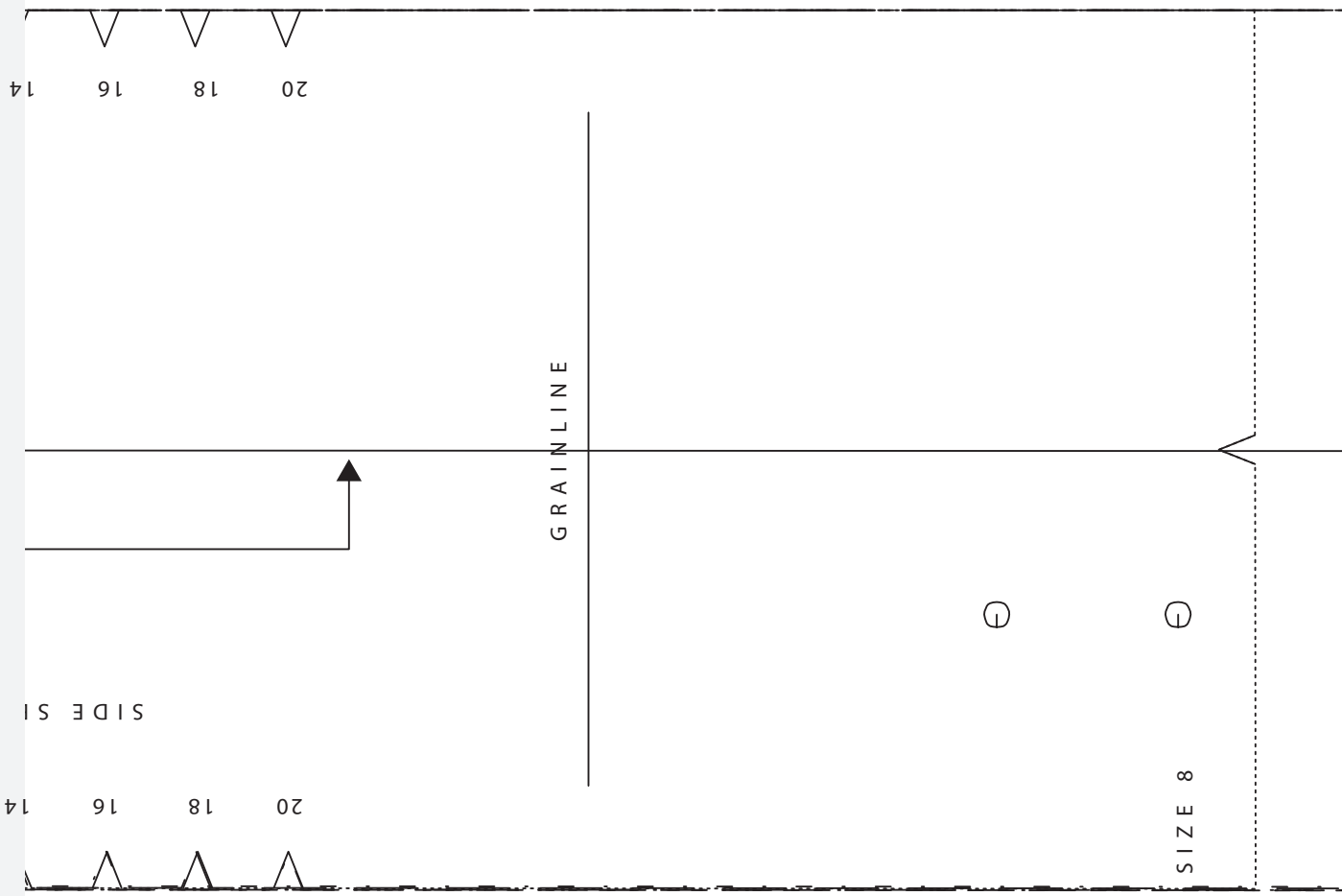
INTERFACING

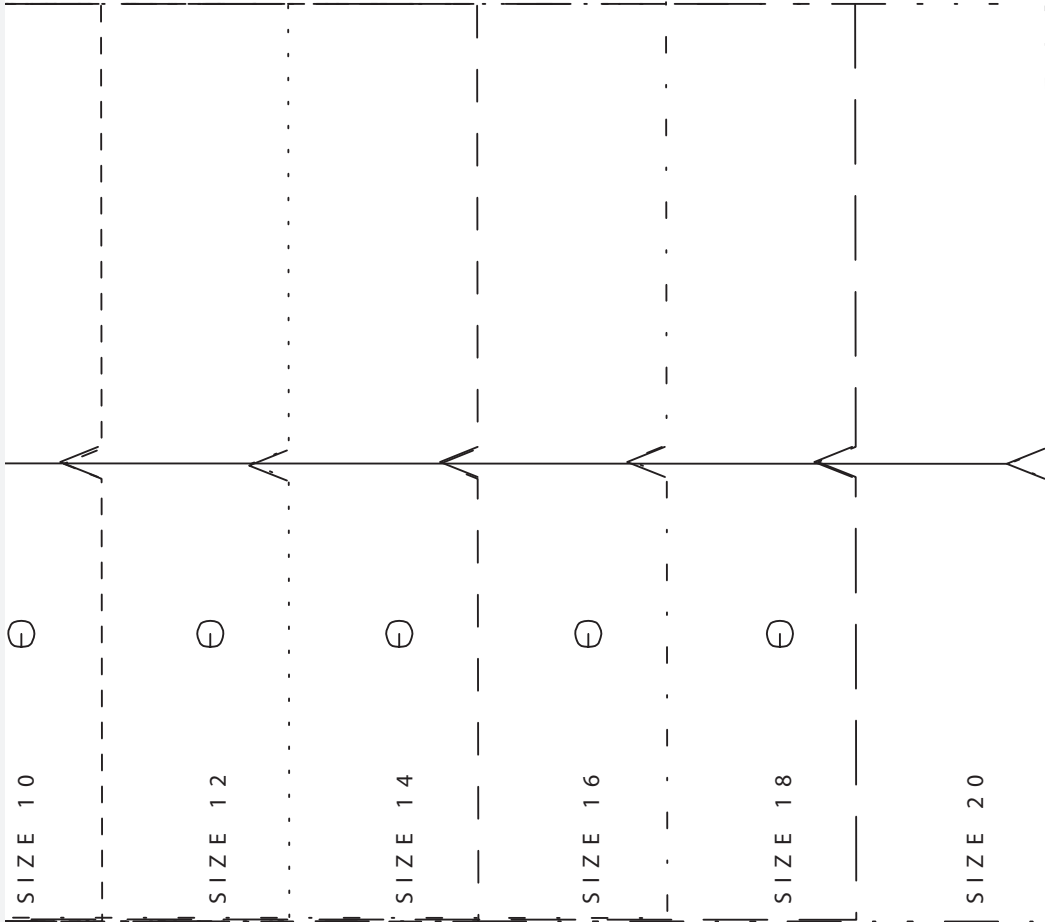
4
12
10
8

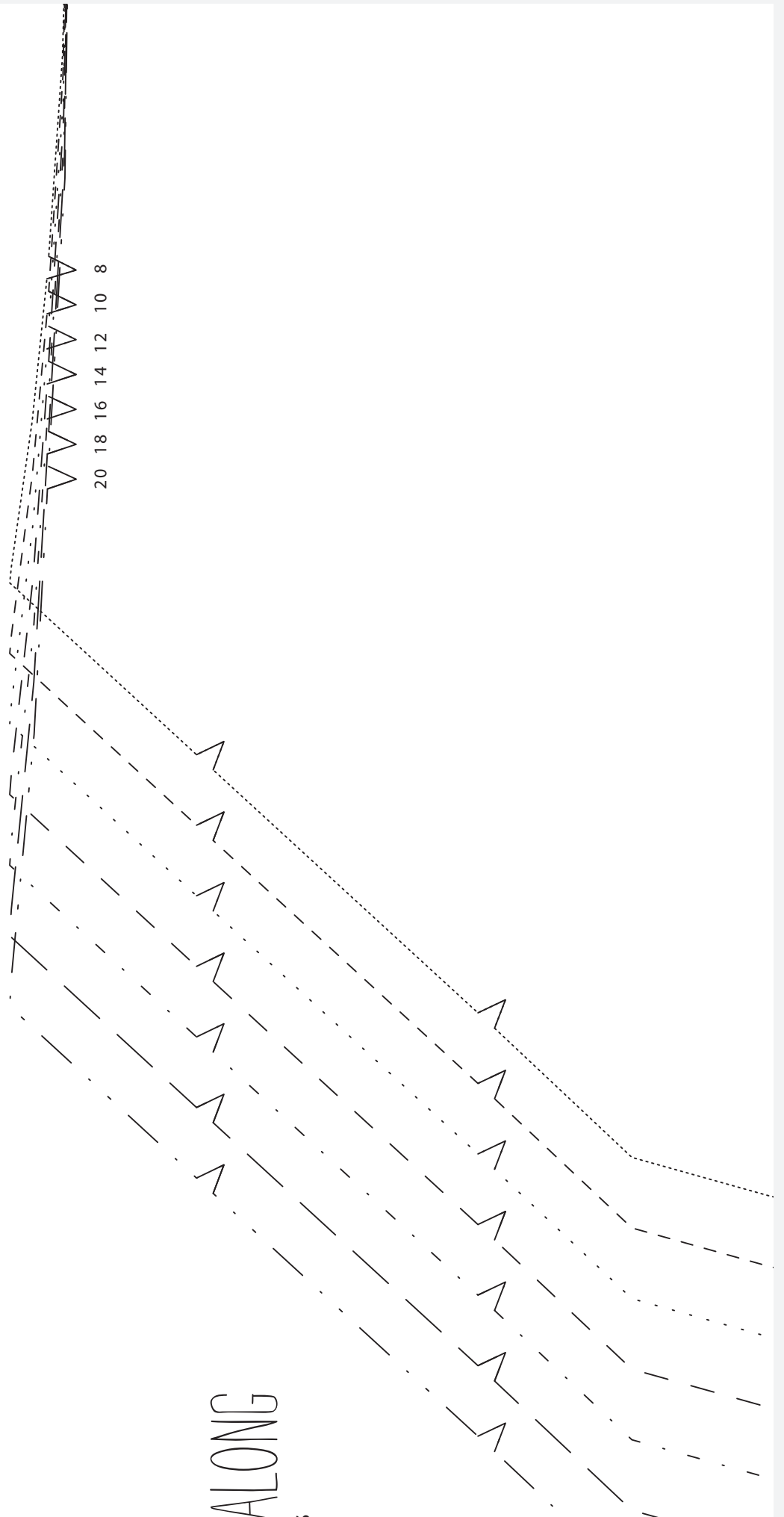
EAM NOTCHES

14
12
10
8

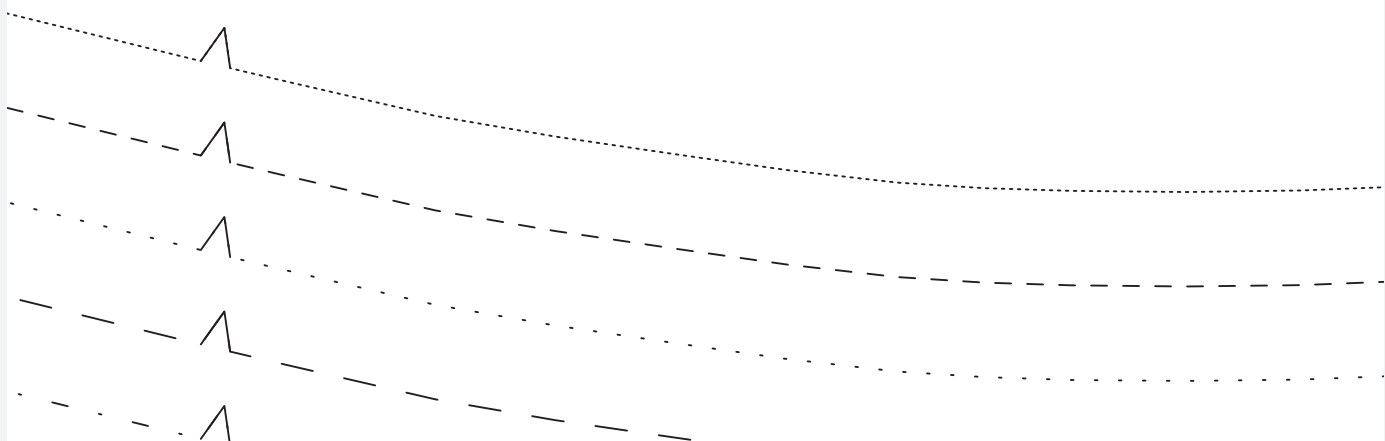
FOLDLINE







A

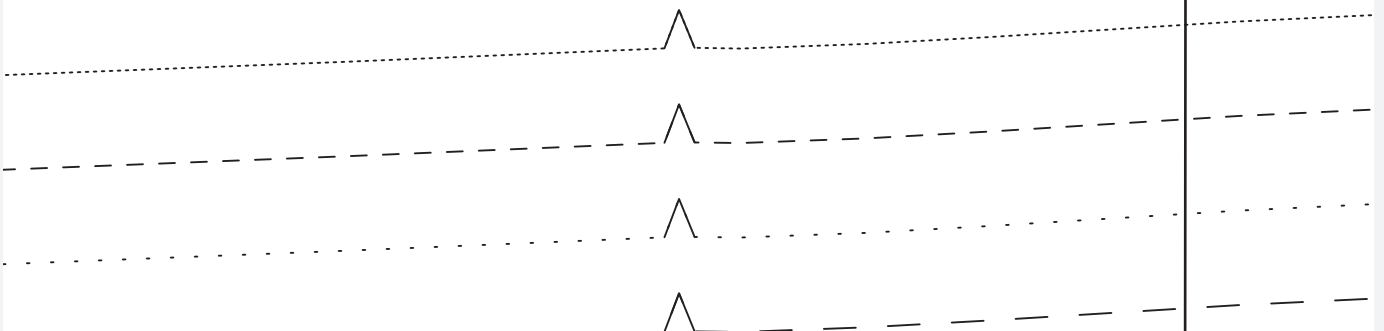


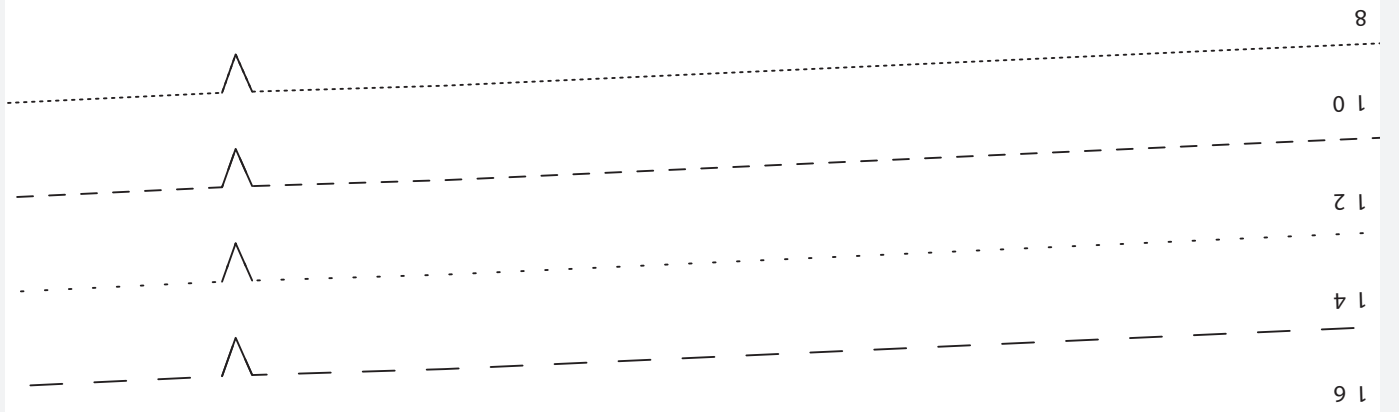


GRAINLINE

ERIN SKIRT
FRONT SKIRT
CUT 1 PAIR

SHORT VERSION





SIZE
SIZE
SIZE
SIZE
SIZE
SIZE 8

LONG VERSION

SIZE CHART

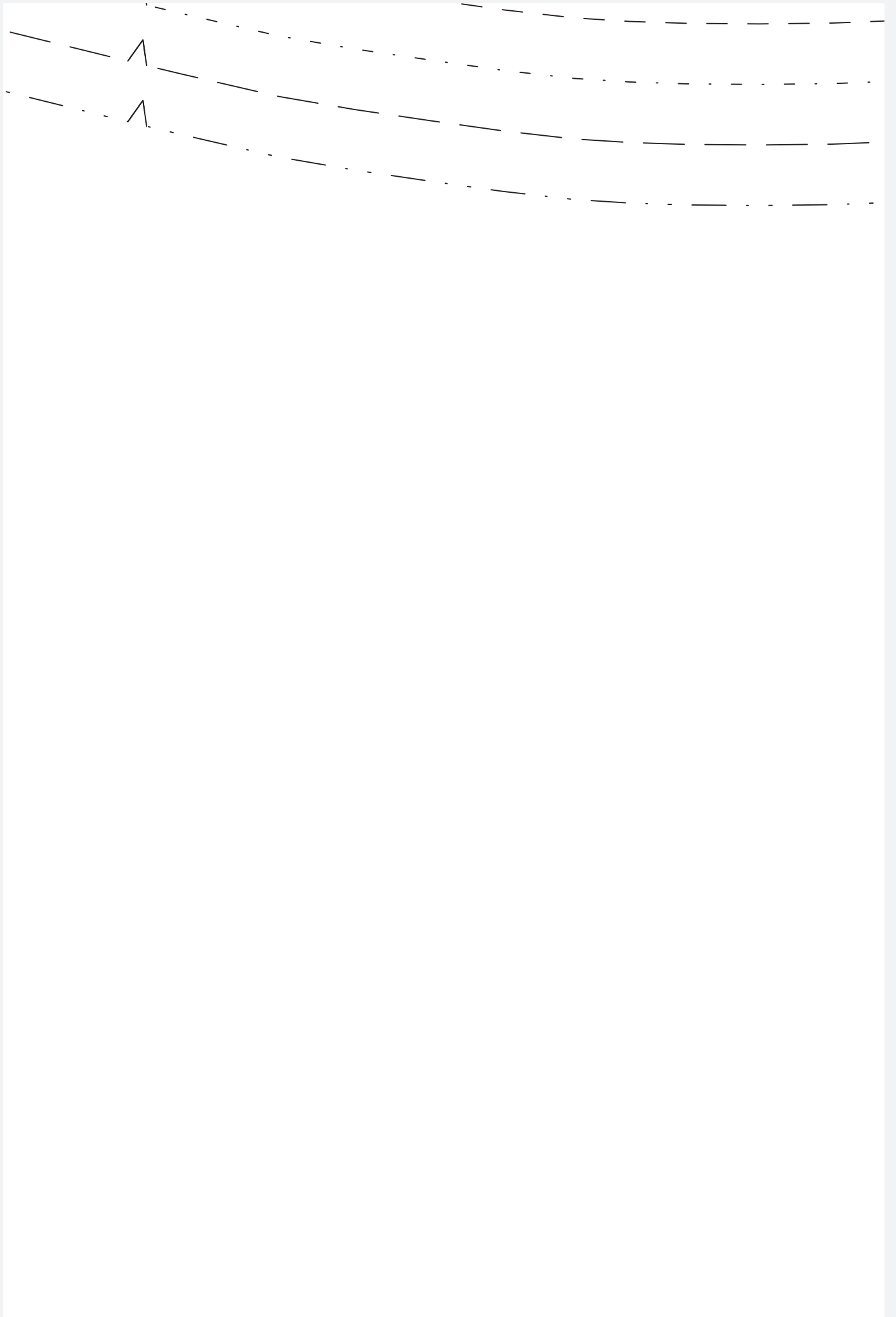
SIZE 20
SIZE 18
SIZE 16
SIZE 14
SIZE 12
SIZE 10
SIZE 8

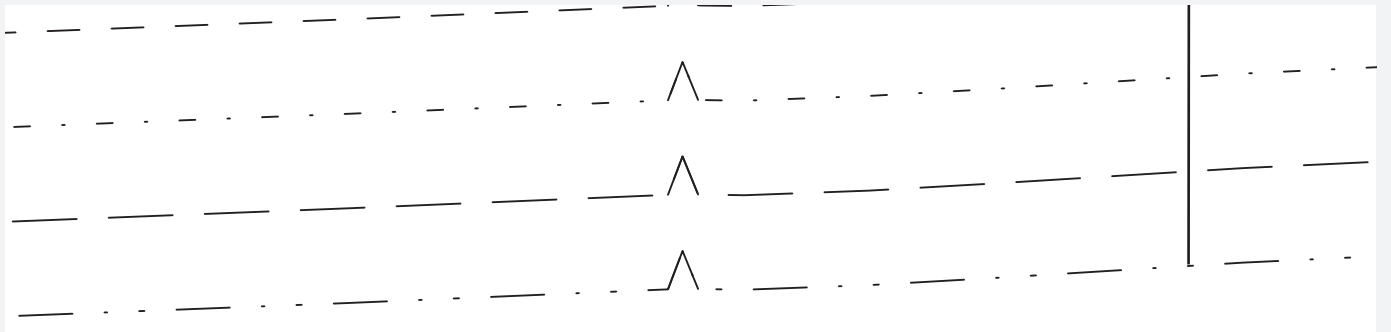


SKIRT SEW

(Match pattern pieces
along dashed lines)







18
20

The image shows three horizontal lines for handwriting practice. The top line is dashed, the middle is solid, and the bottom is dashed. A triangle symbol is placed on each line. The numbers 18 and 20 are written on the right side of the lines.

SIZE

SIZE

