



Kentucky Bluegrass Wallet

Materials list:

- Exterior fabric, FQ
- Lining fabric, FQ
- Clear Vinyl, 4"x3"
- Light weight interfacing, 1/2 yard

You may sell bags you make using this pattern. While not required, an acknowledgment of The Wooden Seamstress would be appreciated. Please do NOT sell, forward, or otherwise share this pattern. It is copyright protected.

When printing your pattern pieces:

Use regular 8½" x 11" paper

Scaling set to none or 100%

Abbreviations

SA: seam allowance ¼"

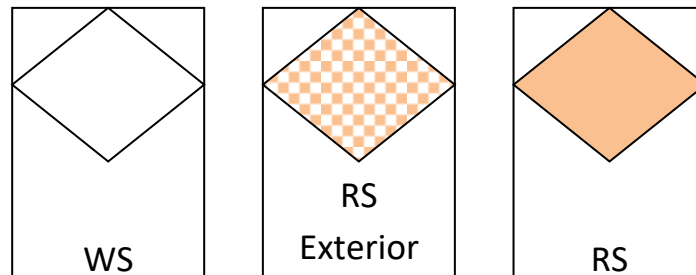
WS(T): wrong sides (together)

DST: double sided tape

BS: baste stitch (5.0 or higher stitch length)

RS(T): right sides (together)

TS: top stitch (3.0-3.5 stitch length),
⅛" from the edge



Cut List: Front Pocket Wallet

Exterior Fabric

- Cut 2, using pattern piece **A**

Lining Fabric

- Cut 2, using pattern piece **B**
- Cut 2, using pattern piece **C**
- Cut 1, using pattern piece **D**
- Cut 1, card slots, 4"w x 16 ¼"h (no pattern pieces)

Light Weight Interfacing

- Cut 2, using pattern piece **A**
- Cut 2, using pattern piece **B**
- Cut 2, using pattern piece **C**
- Cut 1, using pattern piece **D**
- Cut 1, card slots, 4"w x 15 ½"h (no pattern pieces)

Clear Vinyl

- Cut 1, using pattern piece **E:** 4"w x 3"h

Cut List:

Square Wallet

Exterior Fabric

- Cut 2, using pattern piece **A**: 10" w x 4½" h

Lining Fabric

- Cut 2, using pattern piece **B**: 9¾" w x 4" h
- Cut 2, using pattern piece **C**: 5" w x 4¼" h
- Cut 1, using pattern piece **D**: 1¼" w x 4¼" h
- Cut 1, card slots, 4" w x 16 ¼" h (no pattern pieces)

Light Weight Interfacing

- Cut 2, using pattern piece **A**: 10" w x 4¼" h
- Cut 2, using pattern piece **B**: 9¾" w x 4" h
- Cut 2, using pattern piece **C**: 5" w x 4¼" h
- Cut 1, using pattern piece **D**: 1¼" w x 4¼" h
- Cut 1, card slots, 4" w x 15 ½" h (no pattern pieces)

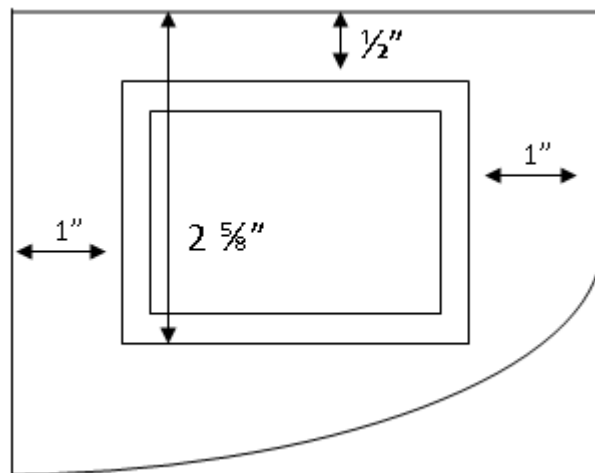
Clear Vinyl

- Cut 1, using pattern piece **E**: 4" w x 3" h

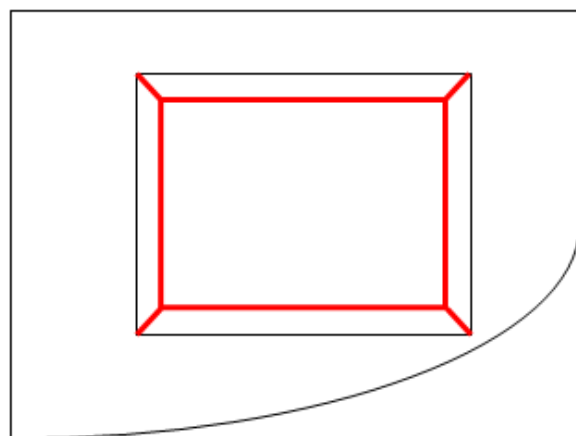
Window ID Pocket

1. With your front window ID (**C**), **RS** down. Mark the outside rectangle using the measurements in the diagram. Use your ruler measure and mark $\frac{1}{4}$ " in from each side and draw lines connecting each of the corners.

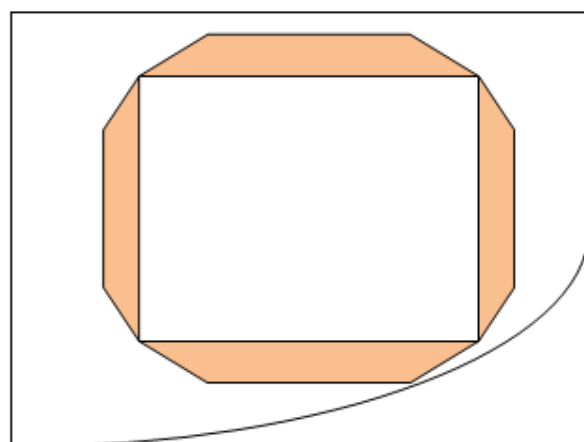
If making the square wallet measure: 1" from the top, bottom and right hand side. $\frac{3}{4}$ " from the left hand side. Then $\frac{1}{4}$ " in from each of those lines on the outside rectangle.



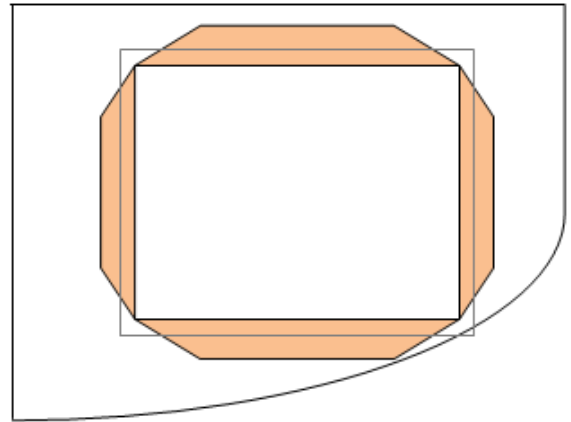
2. Carefully cut out the middle rectangle and into each corner, Only cut to the outside line. Using your glue stick, put glue along the lines on the outside triangle.



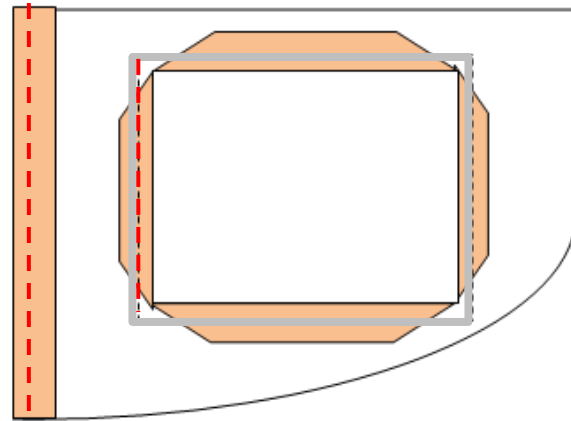
3. Using the outside rectangle as fold lines fold each of the four inside sections **WST** onto the front window piece. Finger press them in place. The glue will help hold them down. Use a little fray check in each of the corners.



4. With your ID pocket fabric **RS** down use your glue stick around the ID window. Stick your clear vinyl (**E**) down and allow the glue to dry.



5. With your window pocket piece **WS** up, fold the edge in $\frac{1}{4}$ " and then another $\frac{1}{4}$ " and press. **TS** along the folded edge and the edge of the ID pocket on that side.



Card Slots

1. Take your card slot fabric and lay it **RS** down. Starting from the bottom mark lines at:

A- $2\frac{3}{4}$ " (if making the square wallet start at $2\frac{1}{2}$ ")

B- 2"

C- $2\frac{1}{4}$ "

D- 2"

E- $2\frac{1}{4}$ "

F- 2"

Make sure you are measuring from the Previous line.

Starting from the bottom,

A- fold the fabric **WST** at the line

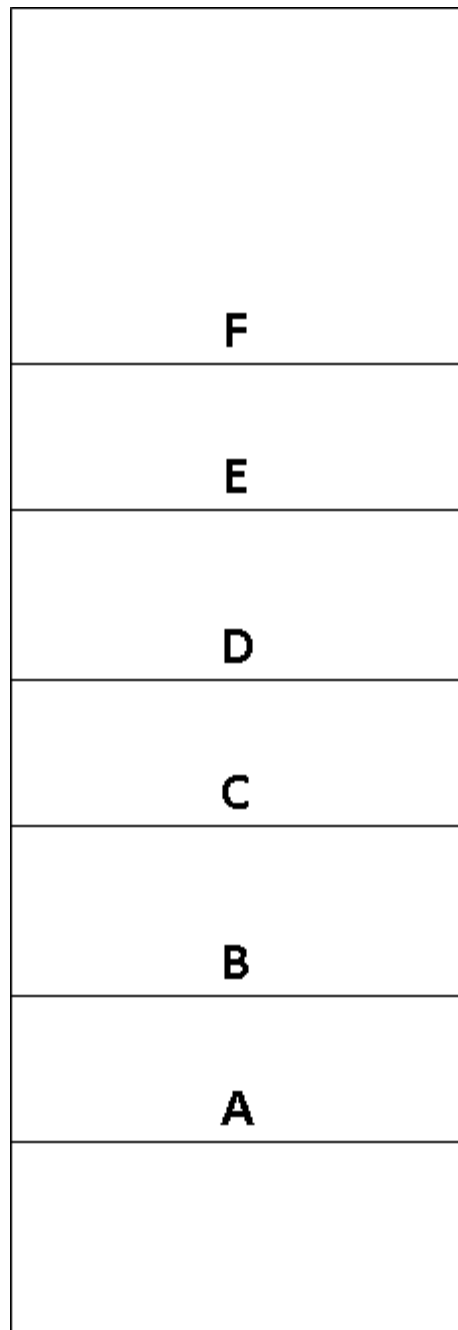
B- fold fabric **RST** at the line

C- fold the fabric **WST** at the line

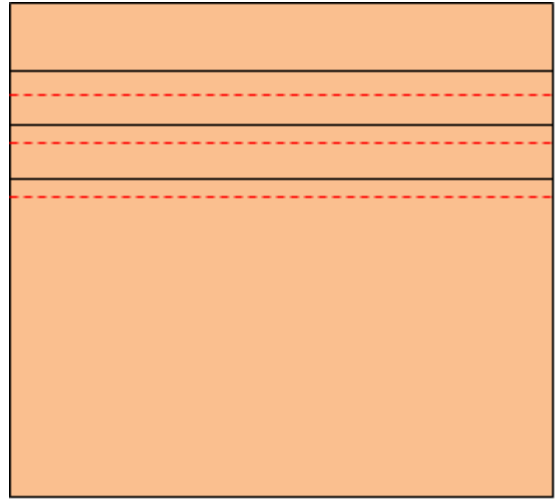
D- fold fabric **RST** at the line

E- fold the fabric **WST** at the line

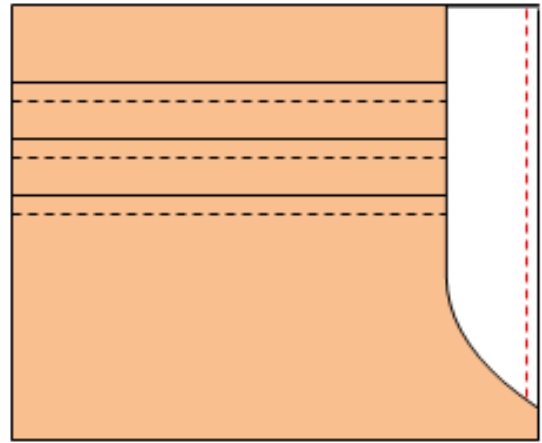
F- fold fabric **RST** at the line



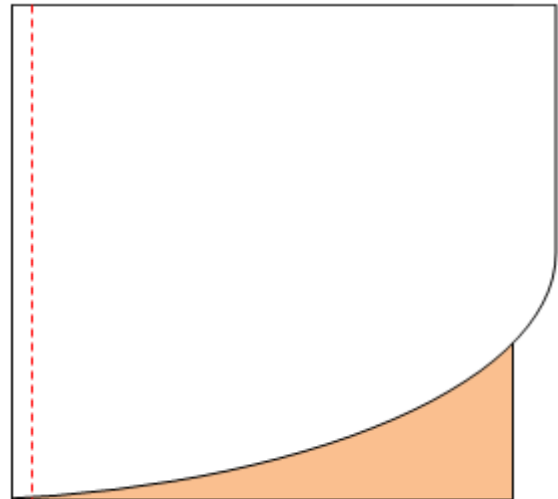
2. Press the folds and **TS**.
(A, C and F) that are facing up.



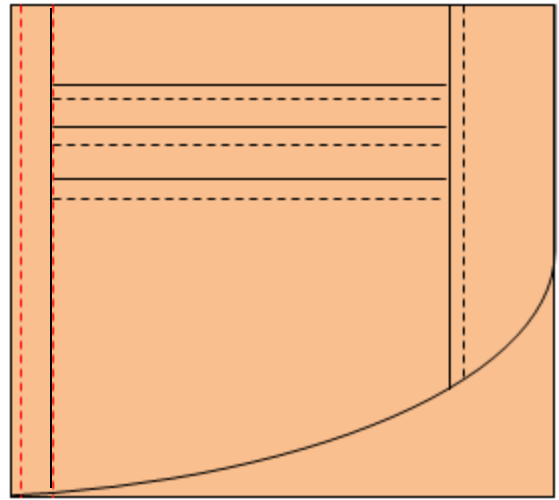
3. With your card slots facing **RS** up lay your side card slot (**D**) **RS** down on the right hand side. Using a $\frac{1}{4}$ " **SA** stitch together, flip the side card slot over so it is **RS** up, press and **TS**.



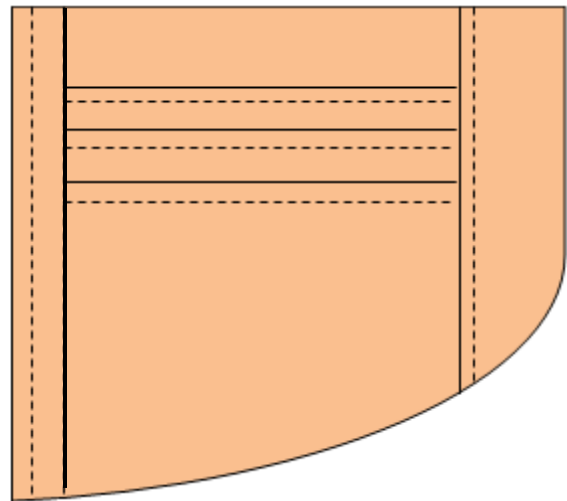
4. **RST** match up the straight edge of the card slot backing (**C**) with the card slots. Stitch along straight edge using $\frac{1}{4}$ " **SA** and trim **SA**.



5. Flip your card slot backing over onto the back of the card slots **WST**. Match up the short straight edge and press. **TS** along the folded edge and the seam where you stitched the backing and card slots together.

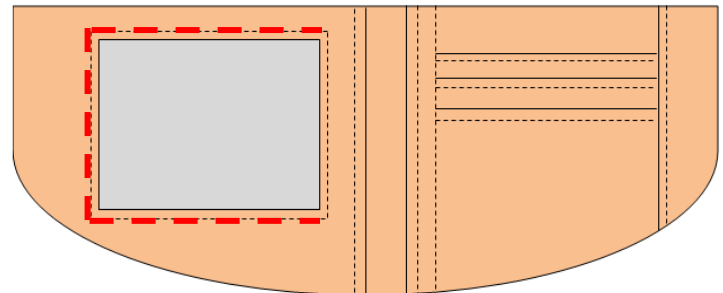


6. Trim off the bottom of the card slots to match the card slot backing curve.

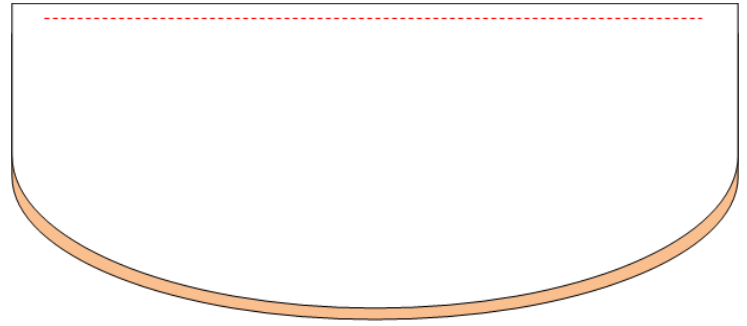


Attaching card slots and window ID

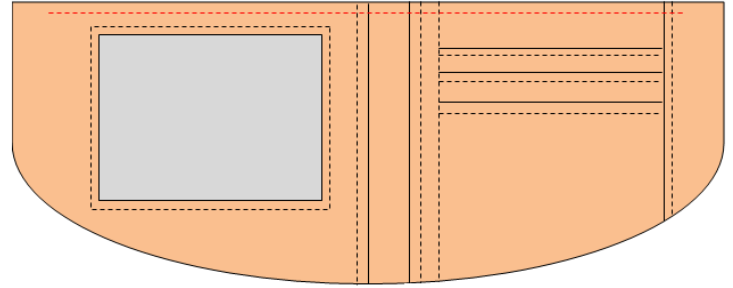
1. Lay one of your Main pieces **(A)** **RS** up. Place your window ID **RS** up on the left side and the card slots on the right side. **BS** together. **TS** around the 3 sides of the window that aren't **TS** yet.



2. Pin together one lining piece (**B**) and the card/ID **RST**. Stitch across the top, starting $\frac{1}{2}$ " in from one side and stopping $\frac{1}{2}$ " from the other side using $\frac{1}{4}$ " **SA**.

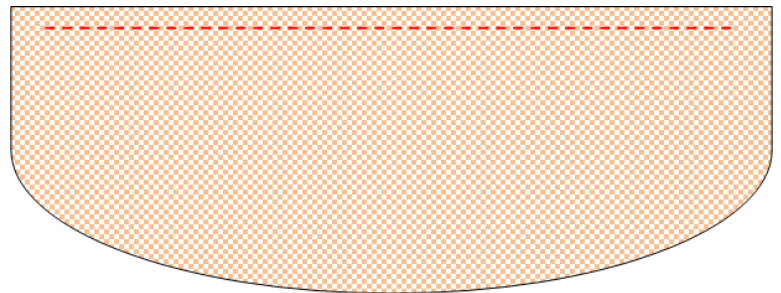
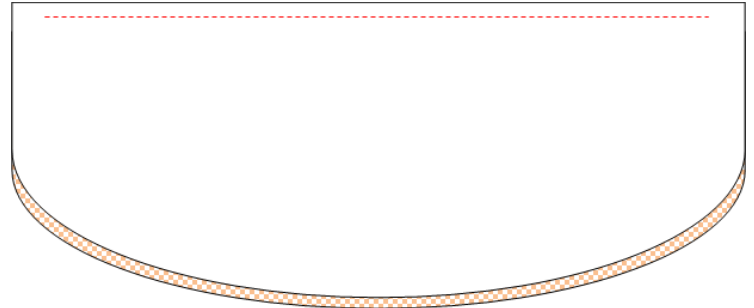


3. Turn right side out and press. **TS** starting $\frac{1}{2}$ " in from the side and stopping $\frac{1}{2}$ " before the other side.



Outside

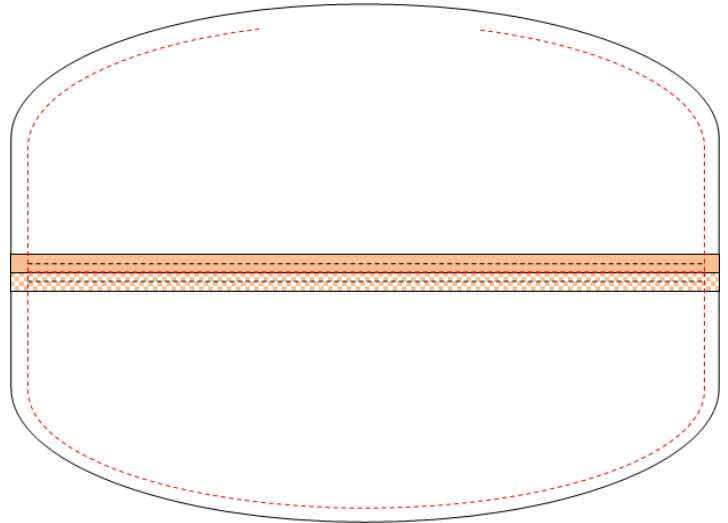
1. Pin together the remaining Main piece (**A**) and Lining (**B**) **RST**. Stitch across the top, starting $\frac{1}{2}$ " in from one side and stopping $\frac{1}{2}$ " from the other side using $\frac{1}{4}$ " **SA**. Trim **SA**.
2. Turn right side out and press. **TS** starting $\frac{1}{2}$ " in from the side and stopping $\frac{1}{2}$ " before the other side.



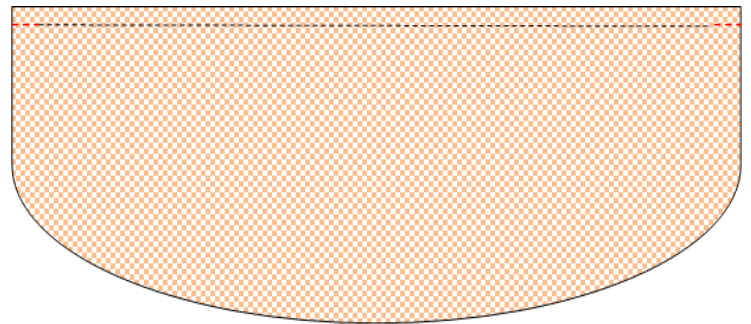
Finishing

1. Lay your 2 piece **RST**. The side with the card slots and ID pocket will be on top of the Main exterior. Starting on the lining side (no card slots), stitch around the outside using $\frac{1}{4}$ " **SA** stopping 4" before where you started. This will be your turn hole.

*On the square wallet you will sew at a $\frac{1}{4}$ " **SA** on the top and bottom and a $\frac{1}{2}$ " **SA** on the sides.*



2. Trim the **SA** but leave the **SA** by the turn hole. Turn **RS** out and press. Close the turn hole by doing a small zigzag stitch across the opening. Tuck lining into wallet. You can **TS** all the way around the sides and bottom curve or Just put a few stitches at the top.



MAIN

A

Cut 2, Exterior

Cut 2, Interfacing

A

**Vinyl ID
Window E**

Cut 1,
Vinyl 4"w x
3"h

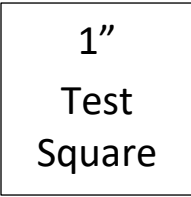
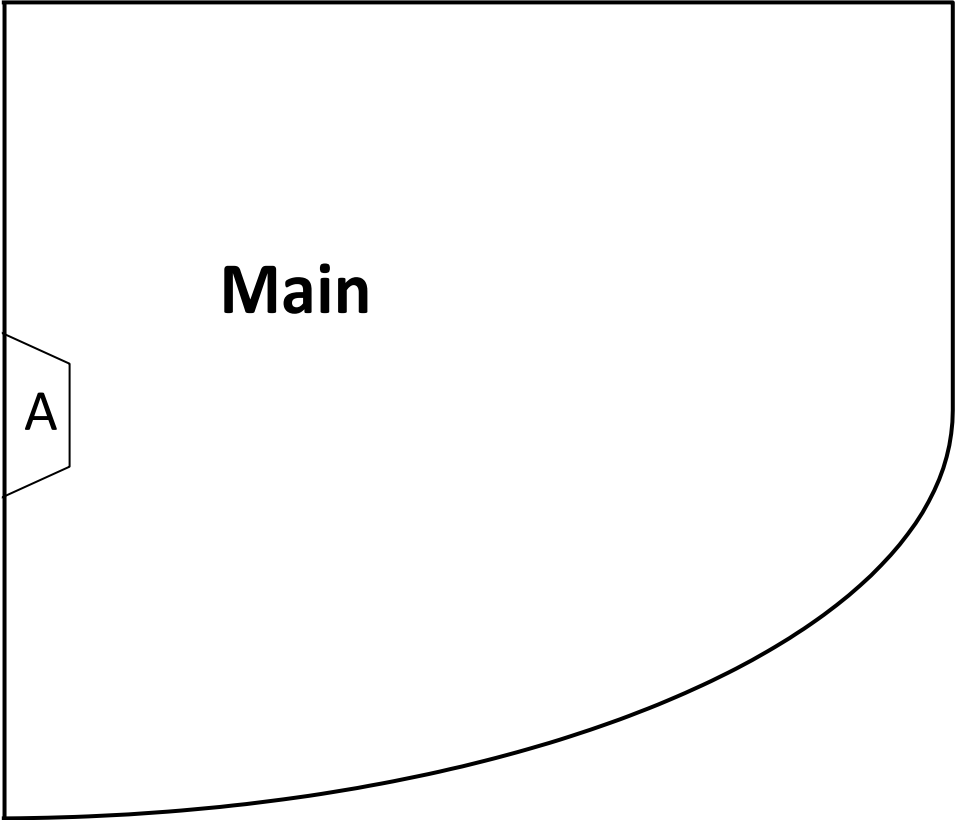
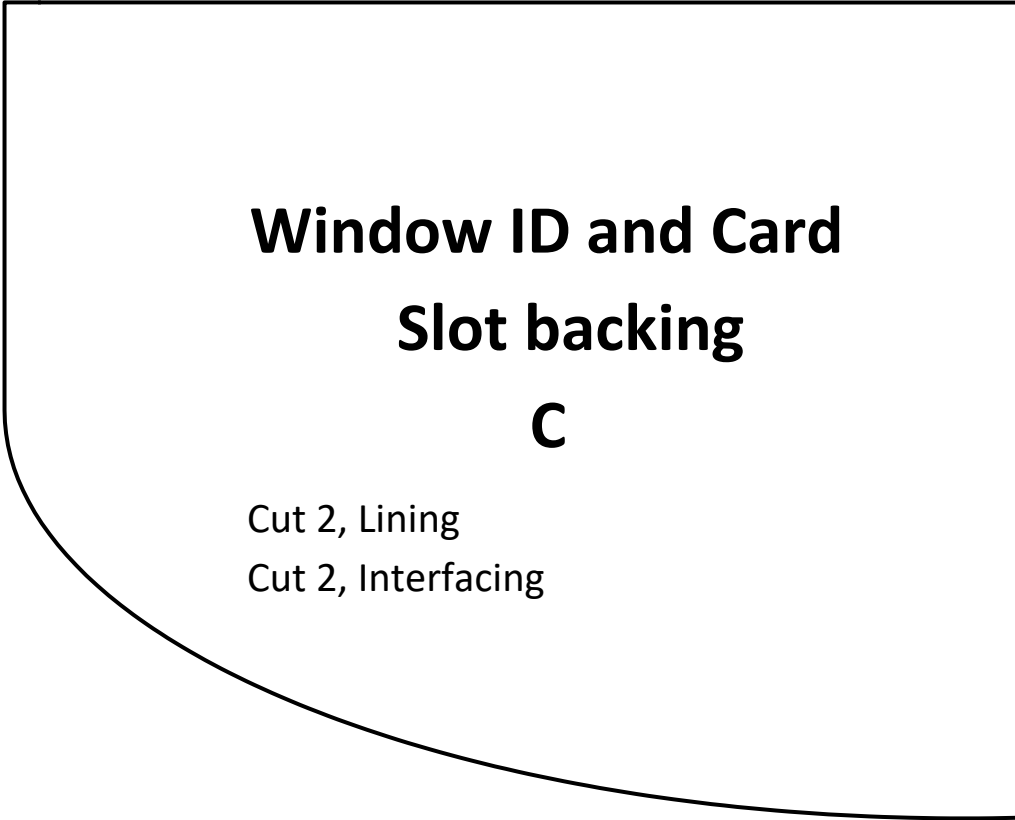
**Card Slot
Side**

D

Cut 1, Lining

Cut 1, Interfacing

1"
Test
Square



Inside lining

B

Cut 2, Lining

Cut 2, Interfacing

1"

Test
Square

MAIN

A

Exterior and Lining

Cut 2, Exterior

Cut 2, Interfacing

10"w x 4¼"h

Vinyl ID Window

E

Cut 1, Vinyl

4"w x 3"h

1"

Test
Square

Inside Lining

B

Cut 2, Lining

Cut 2, Interfacing

9³/₄"w x 4"h

1"
Test
Square

Window ID and Card Slot backing

C

Cut 2, Exterior

Cut 2, Interfacing

5" w x 4¼" h

Card Slot Side

D

Cut 1, Lining

1 ¼" w X 4 ¼" h

1"
Test
Square