

Pattern (Part 1) for our "Half Sleeve Linen Dress" Tutorial

<http://www.fabrics-store.com/blog/2014/09/19/half-sleeve-linen-dress-tutorial/>

2" Square
Scale Test

PRINT ONLY THIS PAGE FIRST TO CHECK SCALE

**IMPORTANT! PRINT AT 100% SCALE
PRINT USING CURRENT ADOBE ACROBAT READER**

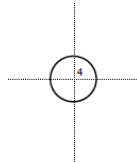
Get it FREE- <https://get.adobe.com/reader/>

Formatted for paper sizes A4 and Letter.

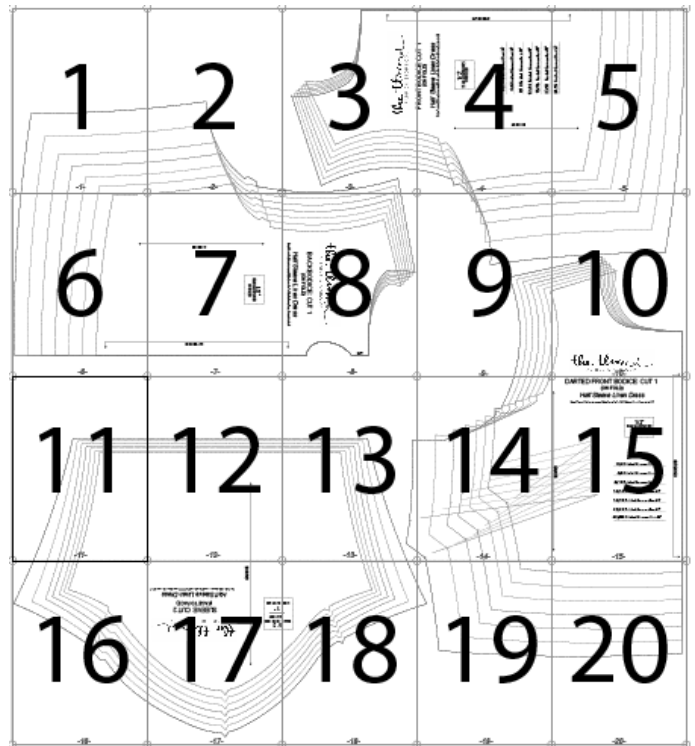
Sizes: 0/2 to 24/26
Optional Front Bust Darts

Please choose size based on desired finished garment bust measurement.

0/2	4/6	8/10	12/14	16/18	20/22	24/26
34"	36"	38"	41"	44"	48"	53"

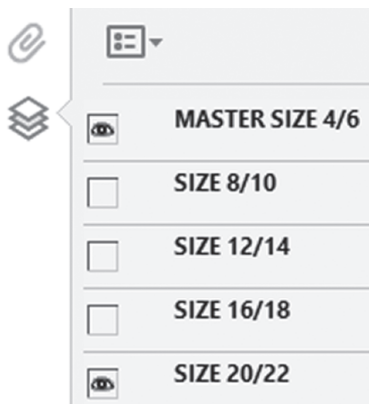
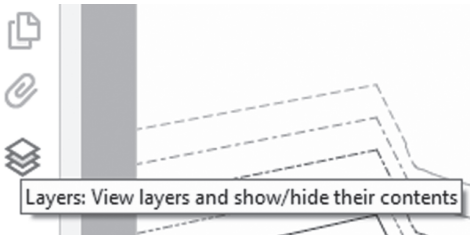


Simply overlap the page margins and align the markings in each corner to complete the circle and tape in place.

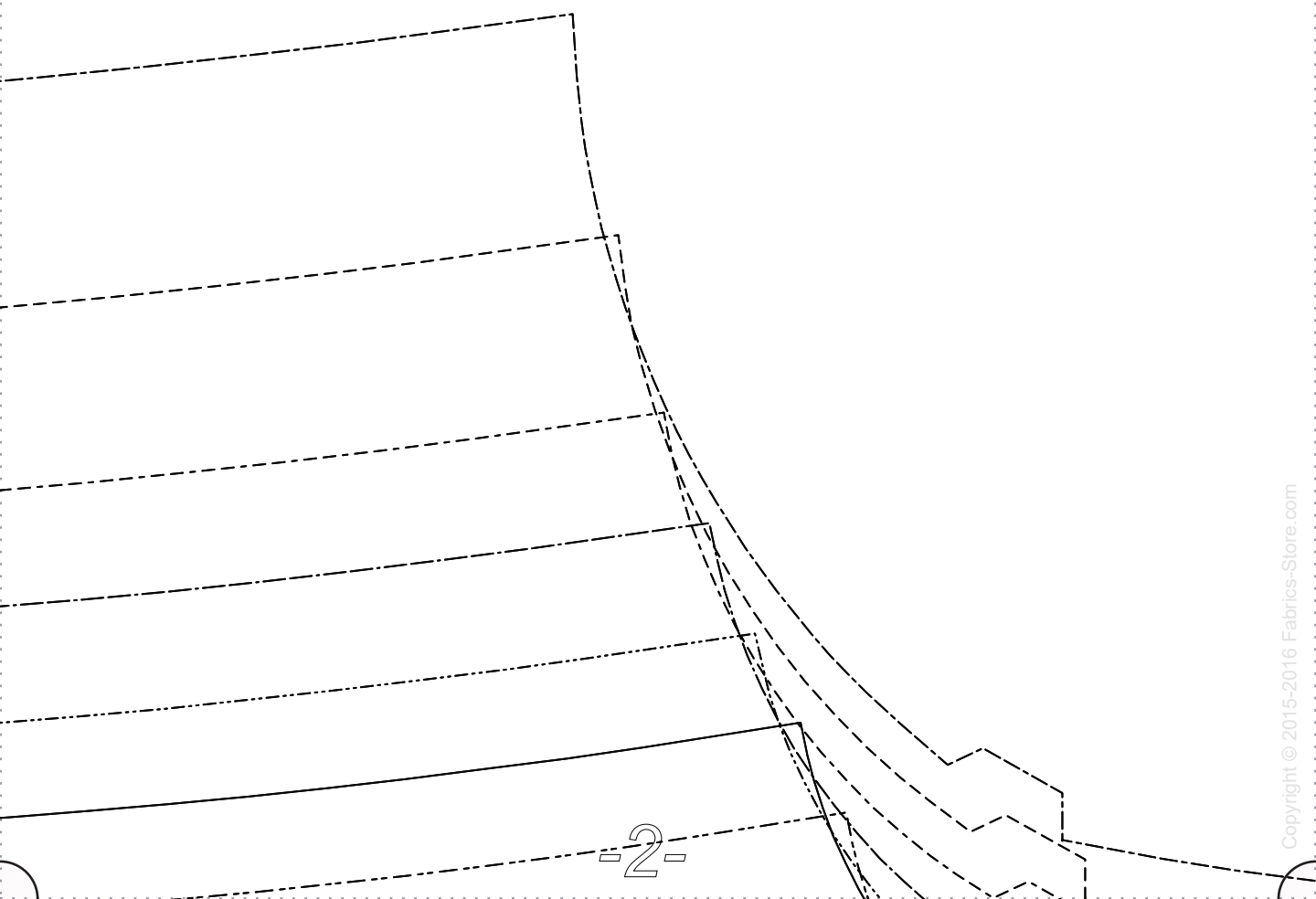


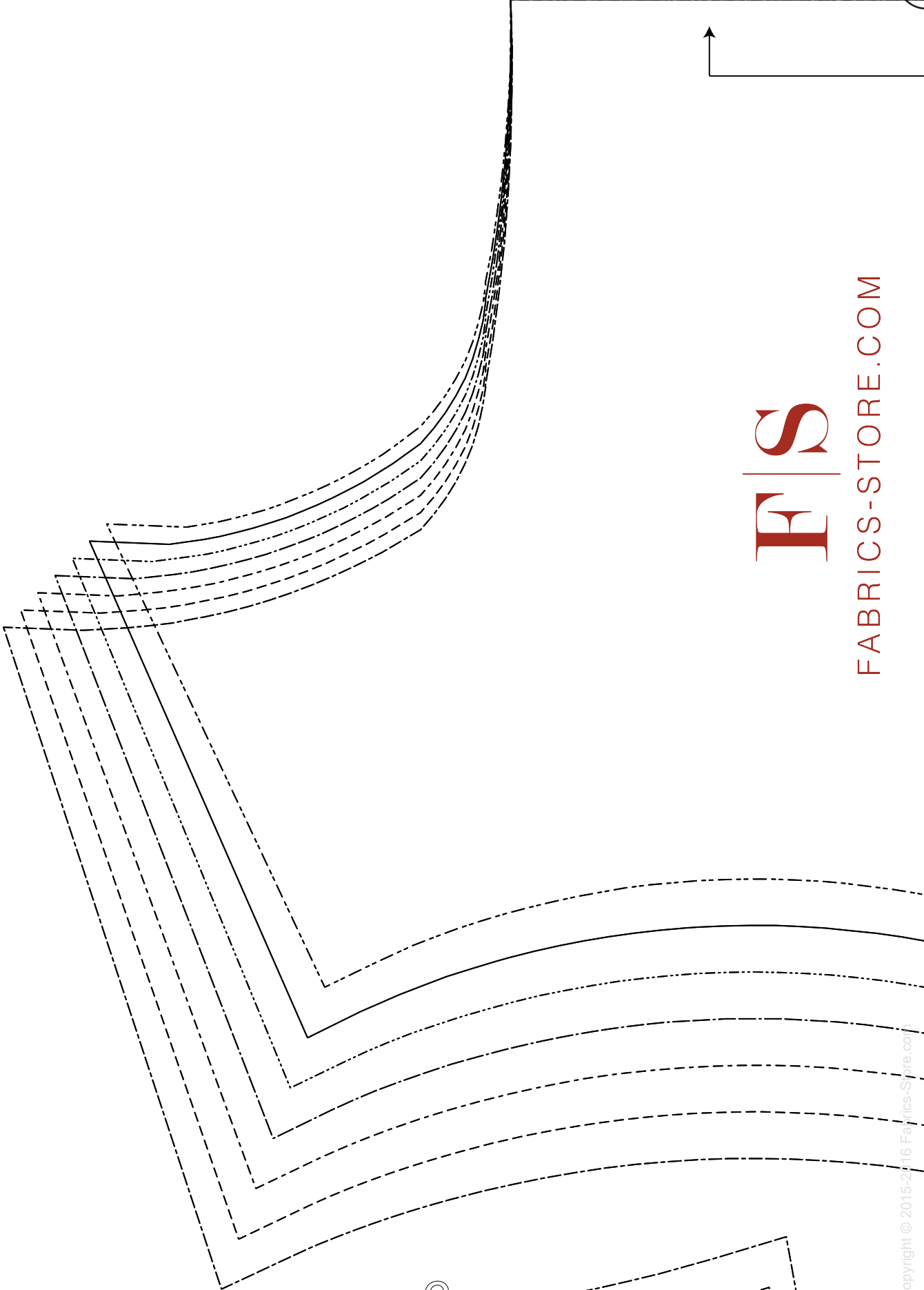
Layered PDF:

Turn on/off each size you would like to print, or print all.



-1-





F|S

FABRICS-STORE.COM

CUT ON FOLD

FRONT BODICE: CUT 1 (ON FOLD)

Half Sleeve Linen Dress

<http://www.fabrics-store.com/blog/2014/09/19/half-sleeve-linen-dress-tutorial/>

1/2"
SEAM ALLOWANCES
INCLUDED

0/2 Finished Garment Bust 34"

4/6 Finished Garment Bust 36"

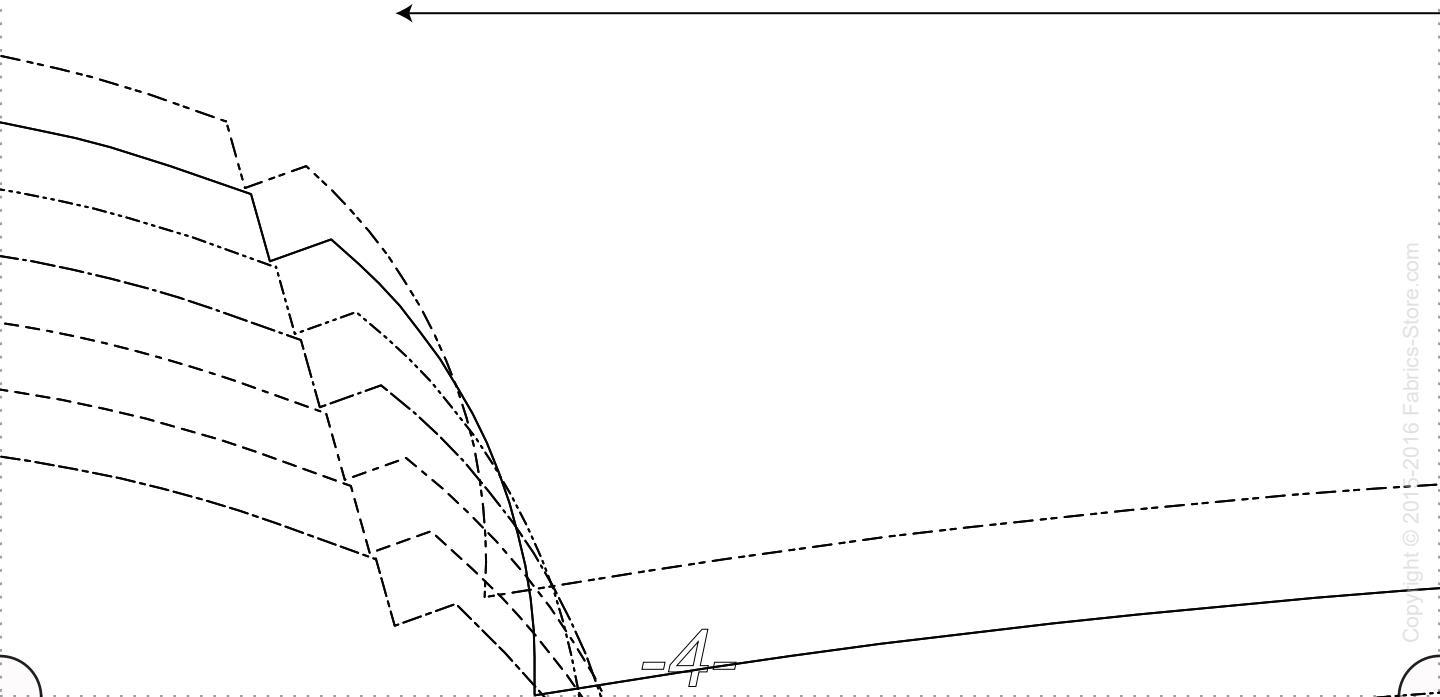
8/10 Finished Garment Bust 38"

12/14 Finished Garment Bust 41"

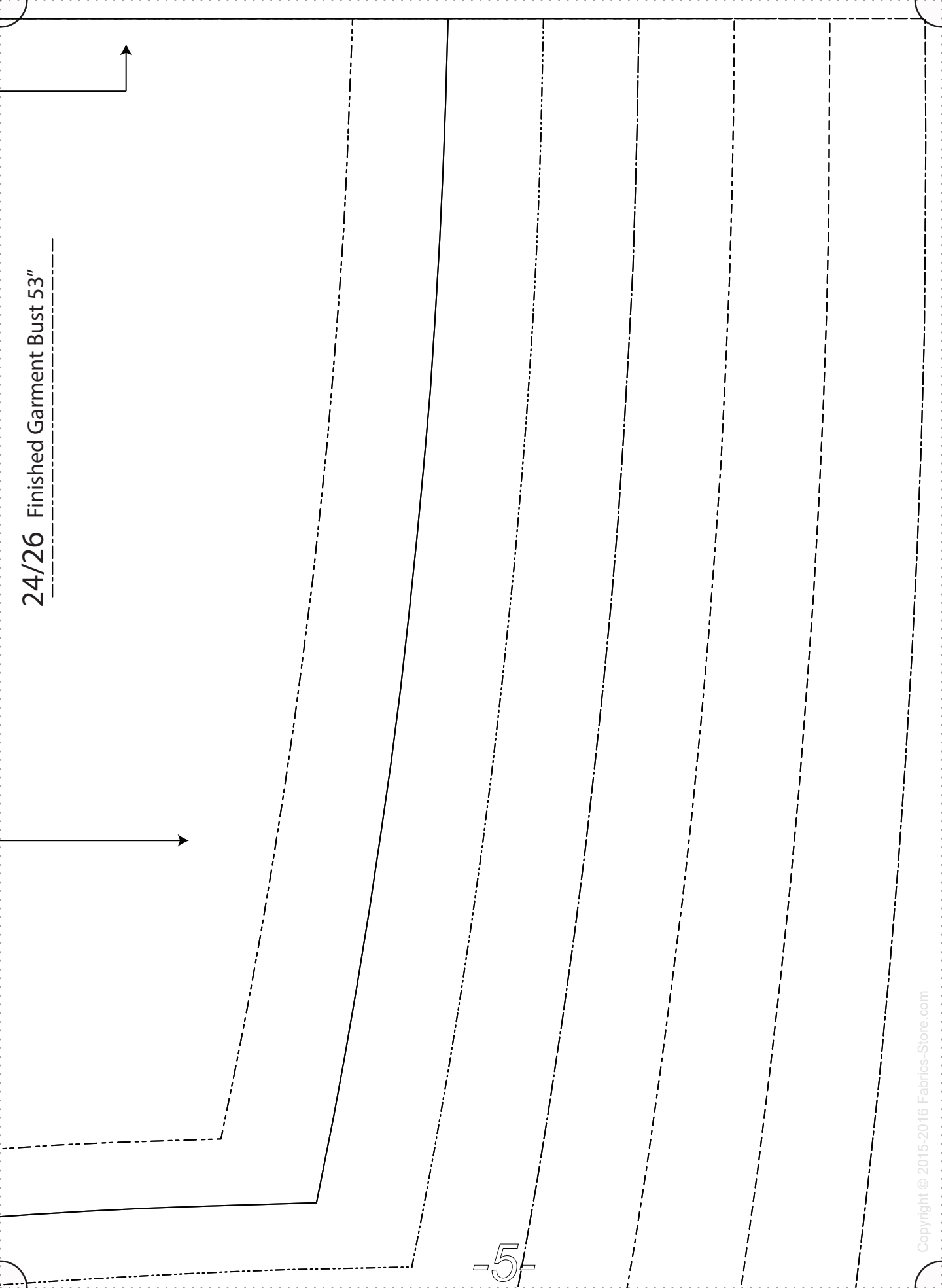
16/18 Finished Garment Bust 44"

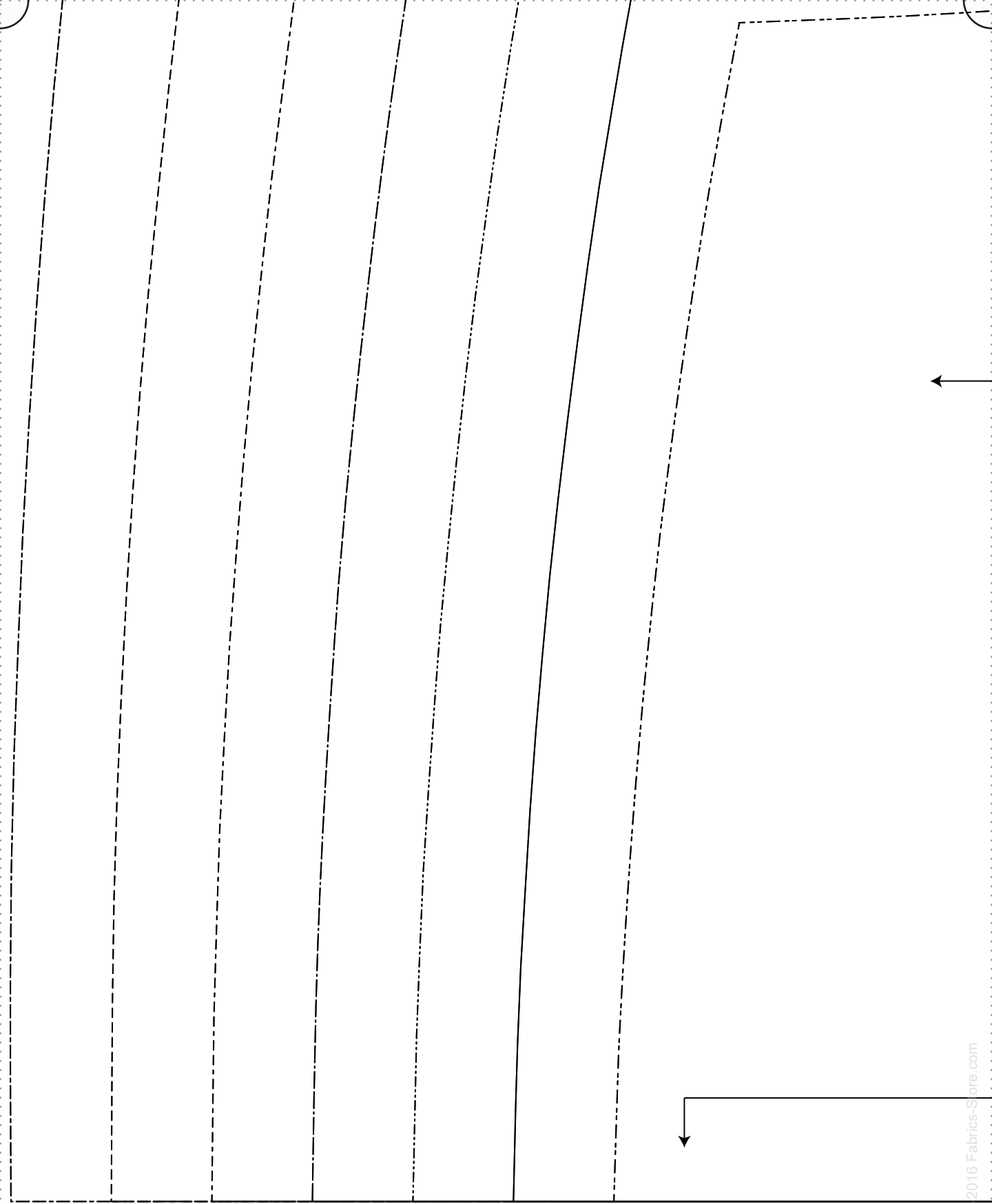
20/22 Finished Garment Bust 48"

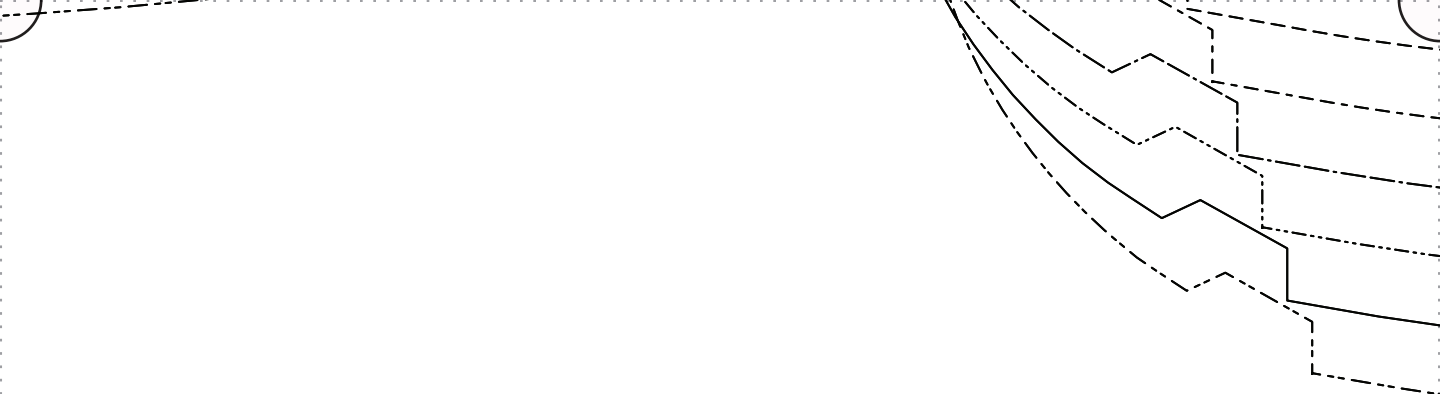
GRAINLINE



24/26 Finished Garment Bust 53"







GRAINLINE

1/2"
SEAM ALLOWANCES
INCLUDED

CUT ON FOLD



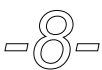
F|S

FABRICS-STORE.COM

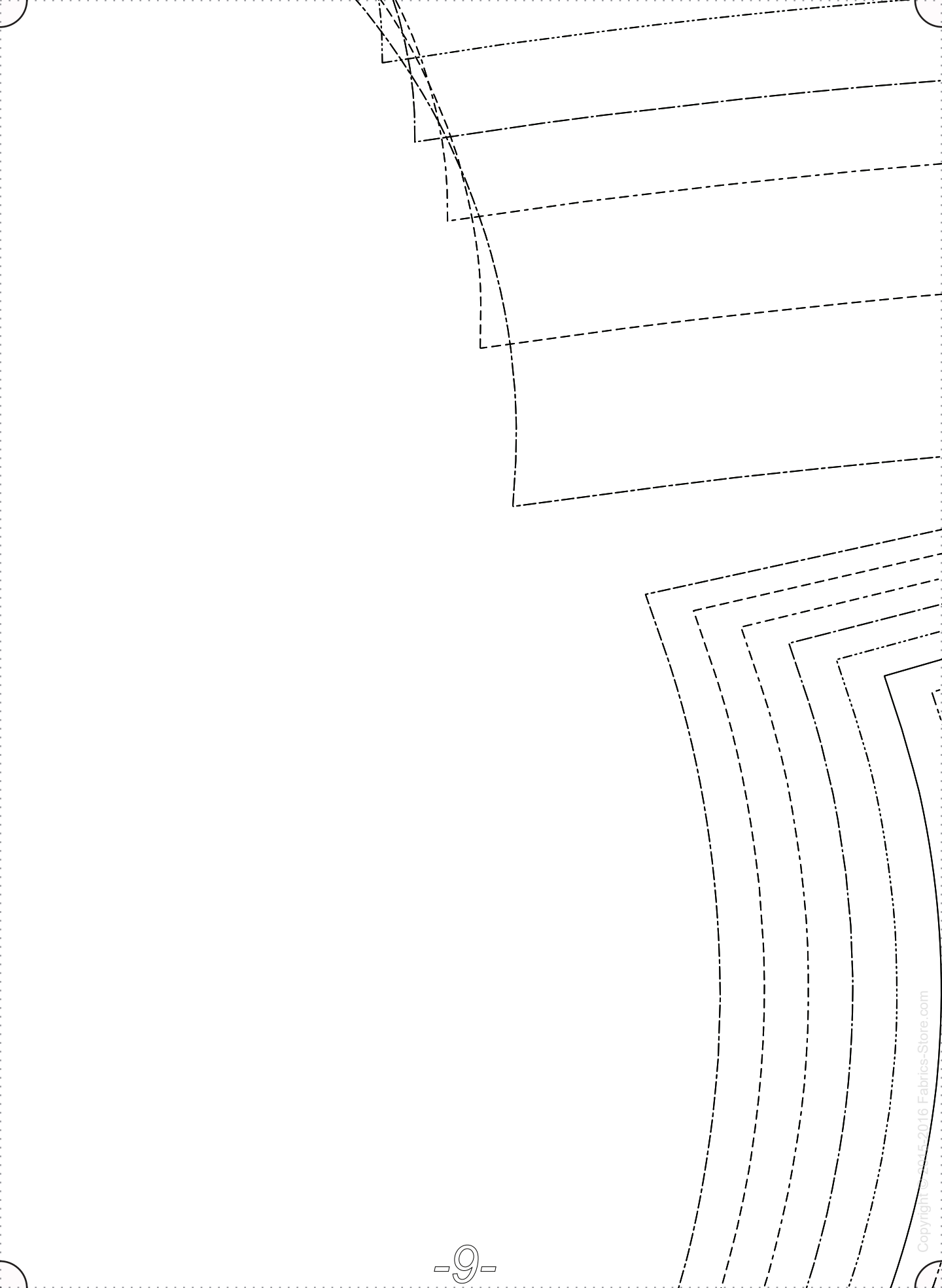
BACK BODICE: CUT 1
(ON FOLD)

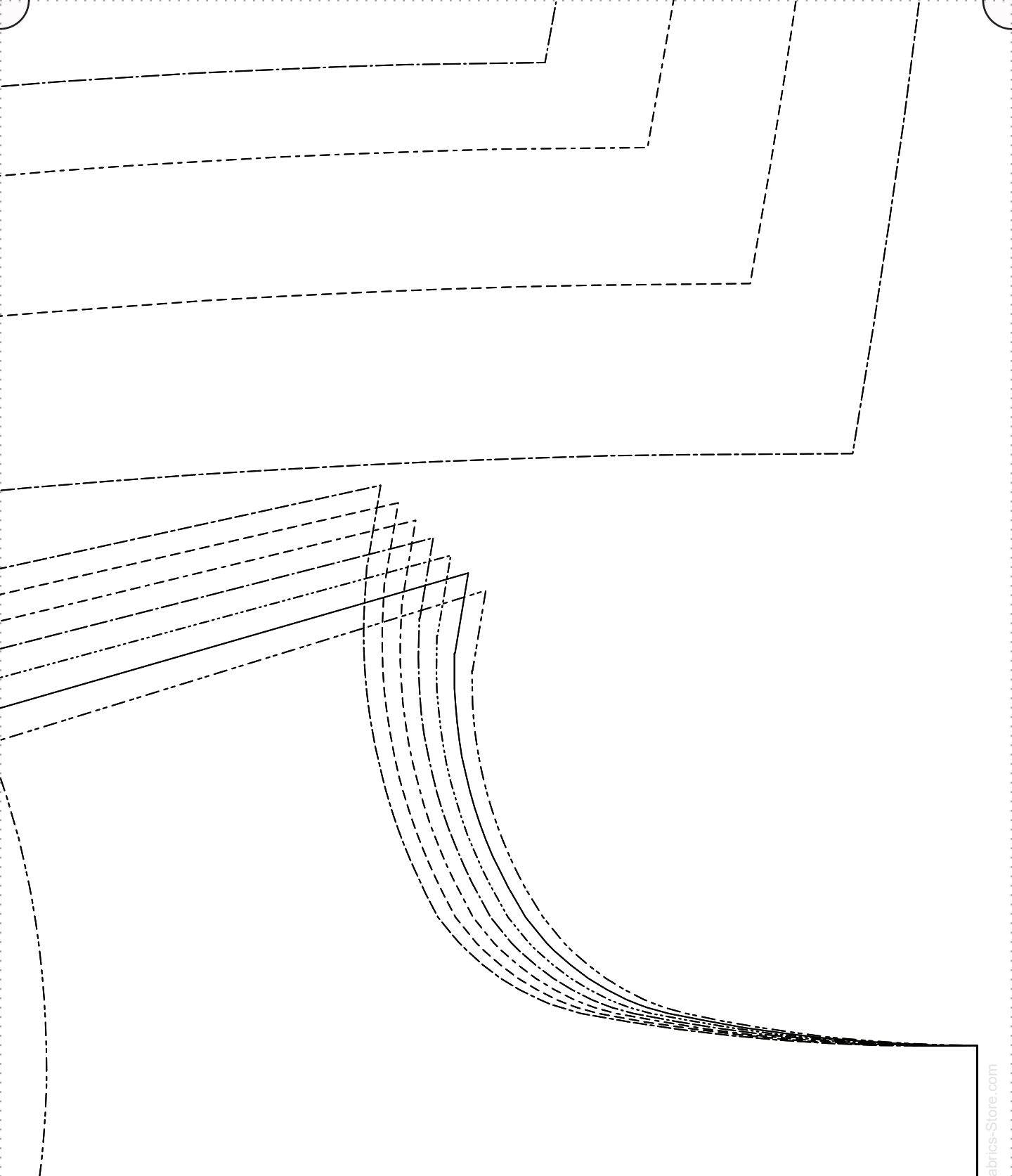
Half Sleeve Linen Dress

<http://www.fabrics-store.com/blog/2014/09/19/half-sleeve-linen-dress-tutorial/>



CUT

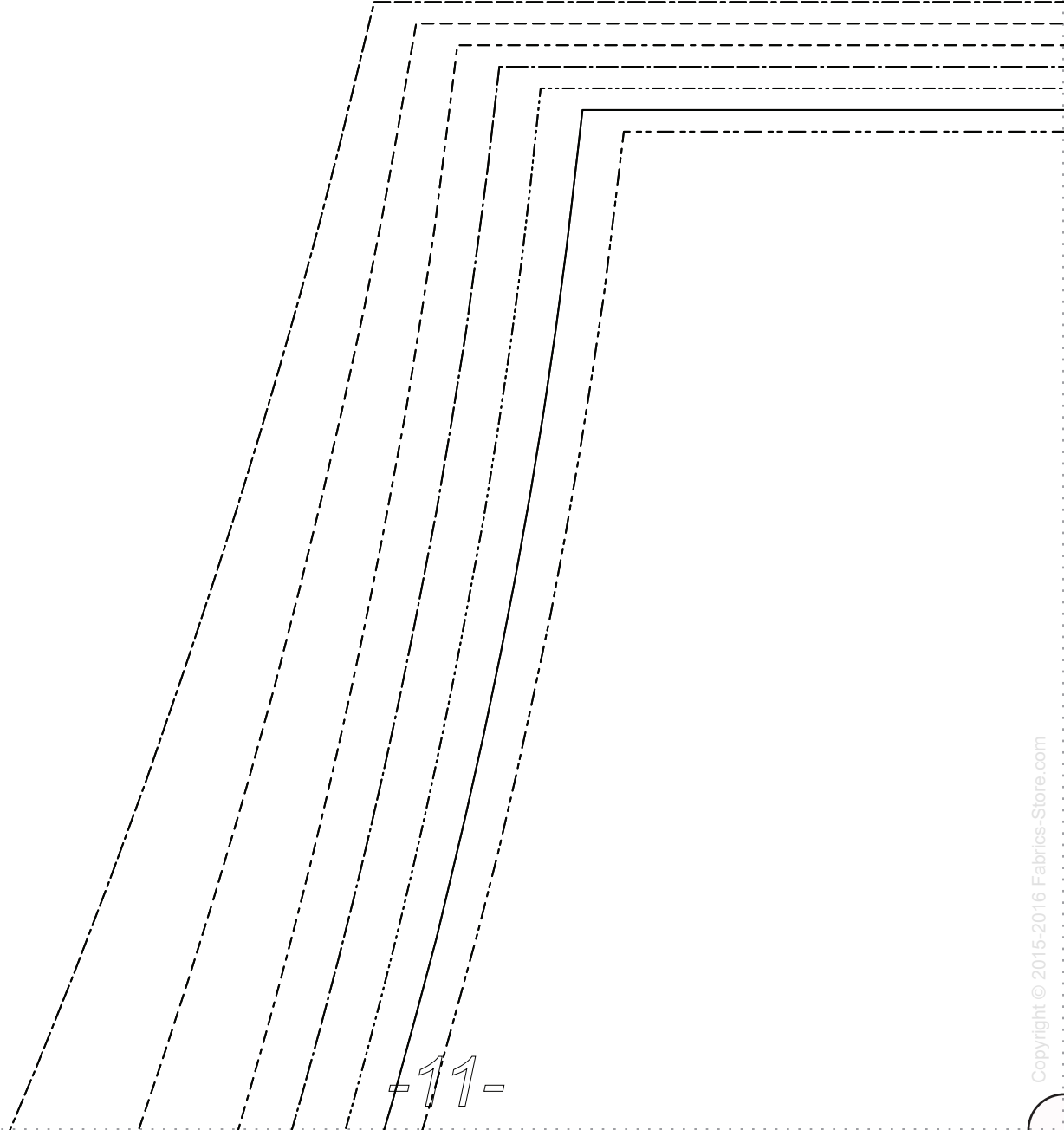


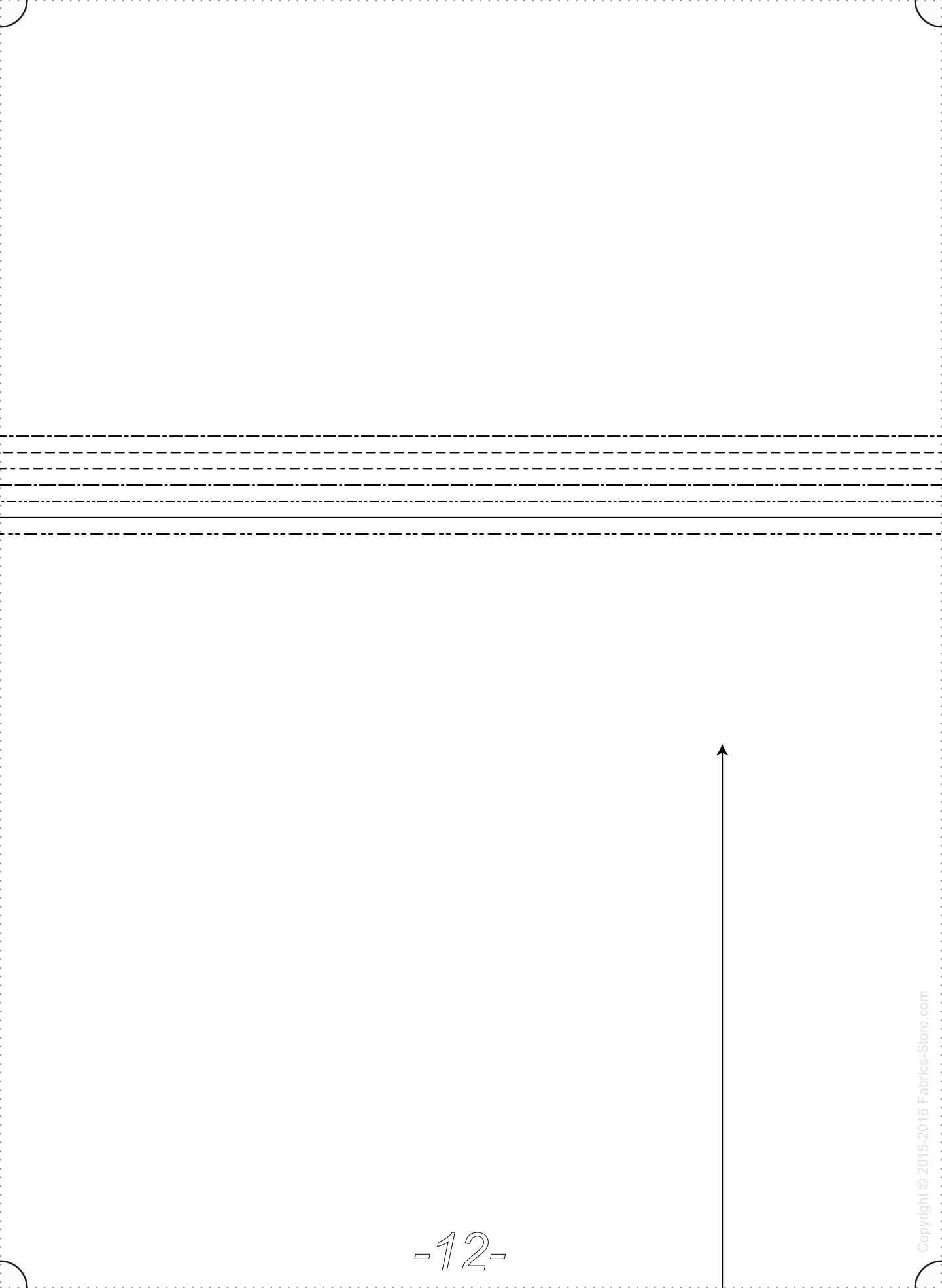


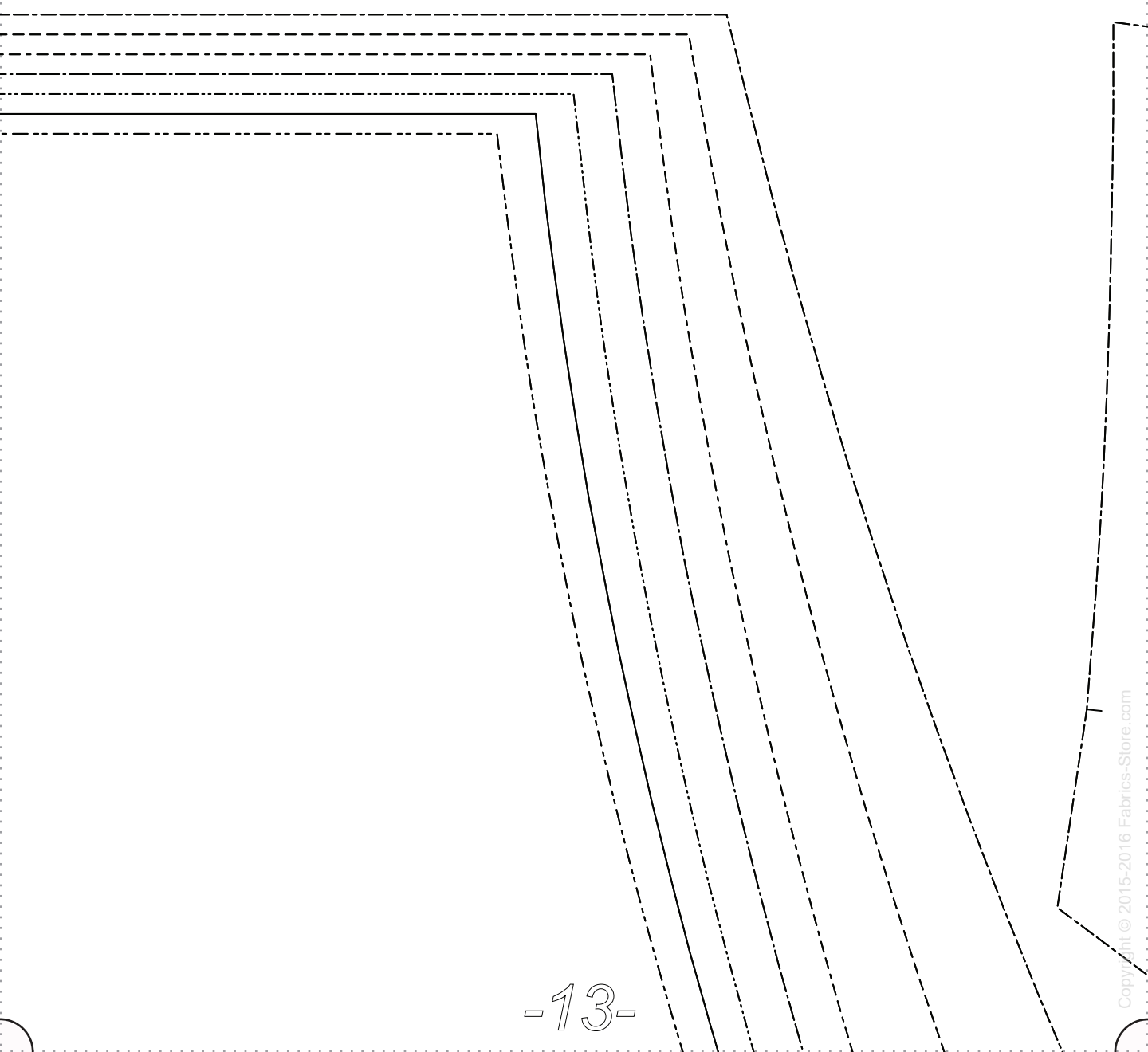
F|S

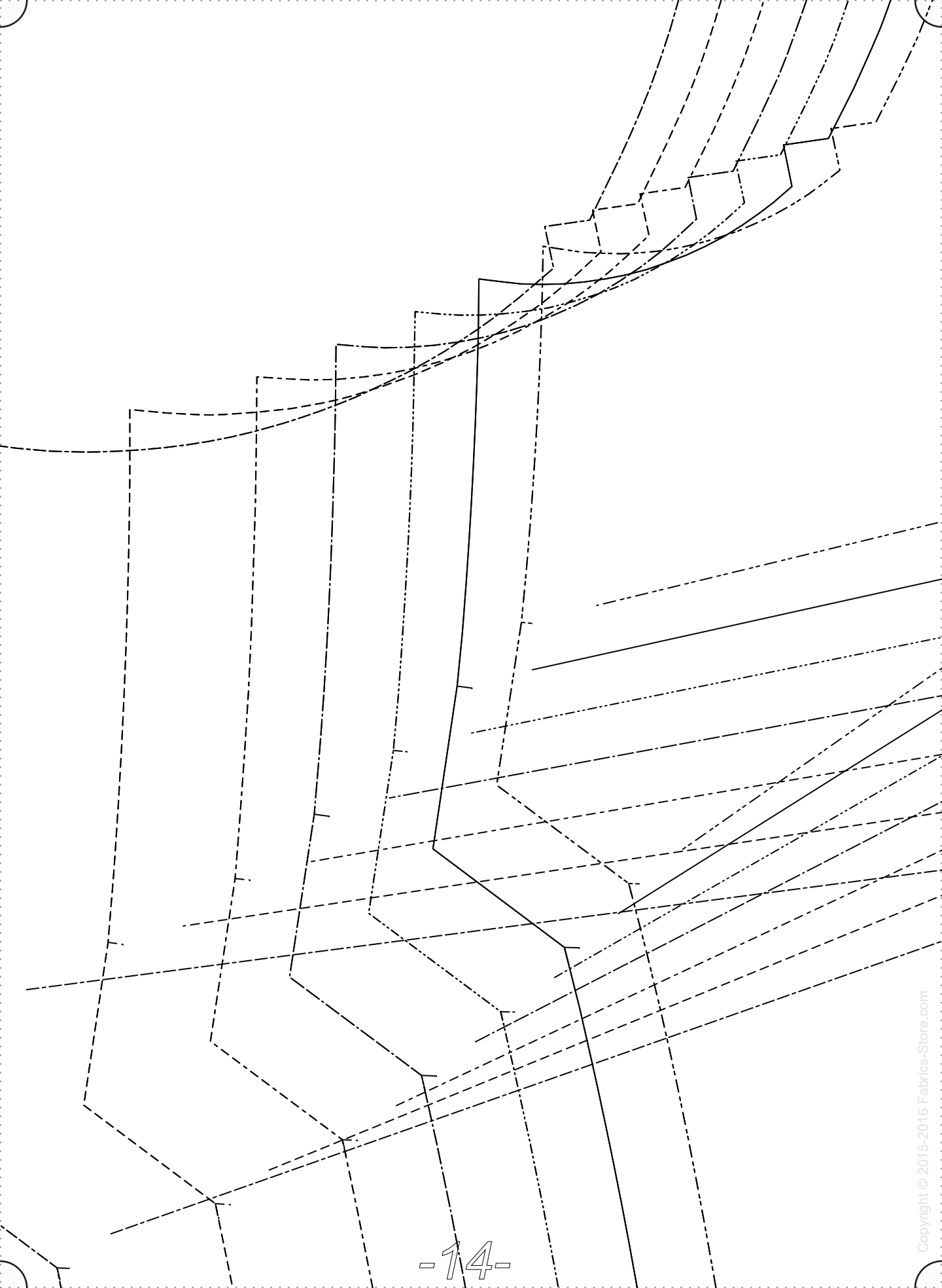
FABRICS-STORE.COM

-10-









DARTED FRONT BODICE: CUT 1 (ON FOLD)

Half Sleeve Linen Dress

<http://www.fabrics-store.com/blog/2014/09/19/half-sleeve-linen-dress-tutorial/>

1/2"
SEAM ALLOWANCES
INCLUDED

GRAINLINE

CUT ON FOLD

0/2 Finished Garment Bust 34"

4/6 Finished Garment Bust 36"

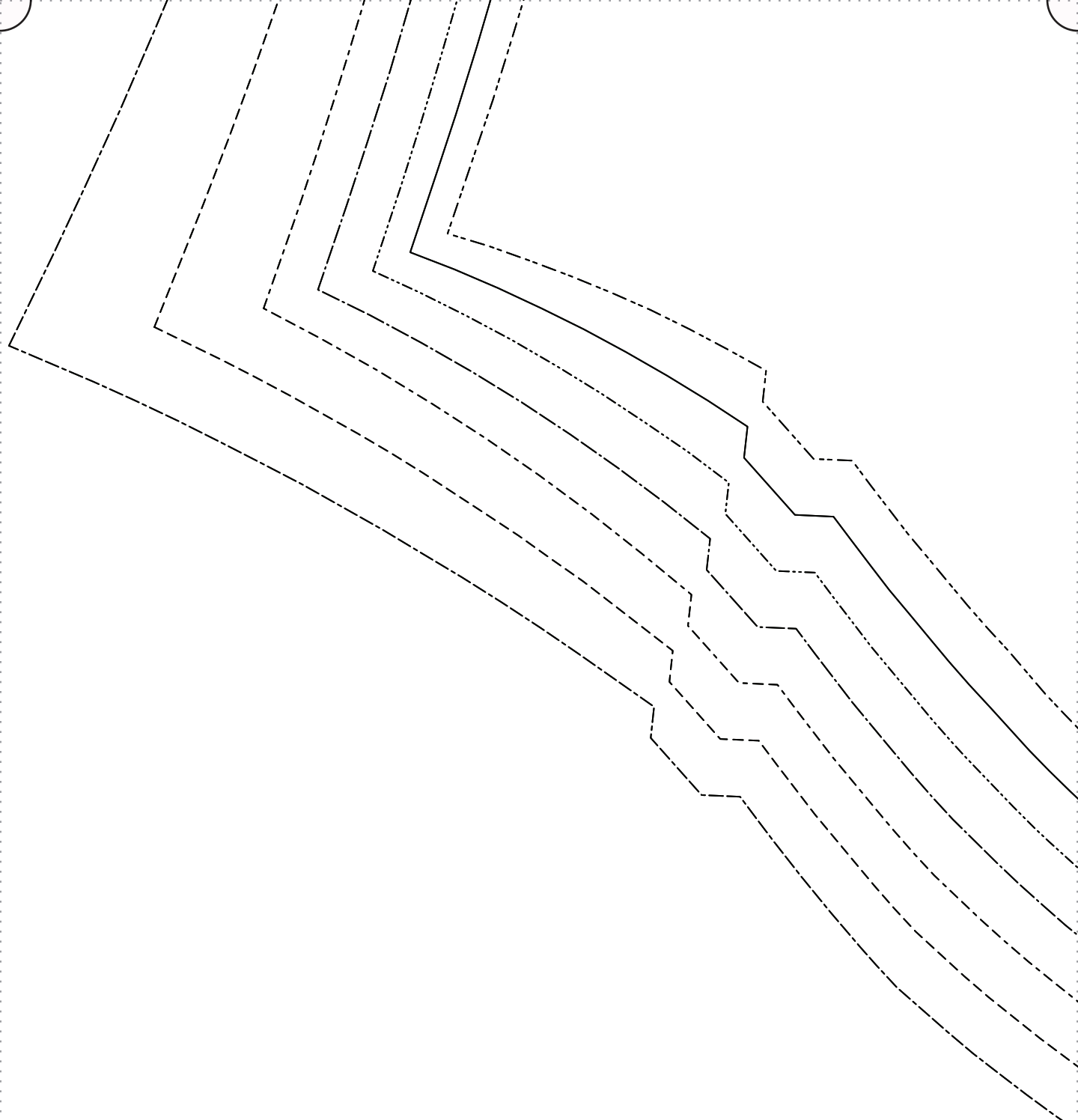
8/10 Finished Garment Bust 38"

12/14 Finished Garment Bust 41"

16/18 Finished Garment Bust 44"

20/22 Finished Garment Bust 48"

24/26 Finished Garment Bust 53"



GRAINLINE

<http://www.fabrics-store.com/blog/2014/09/19/half-sleeve-linen-dress-tutorial/>

Half Sleeve Linen Dress

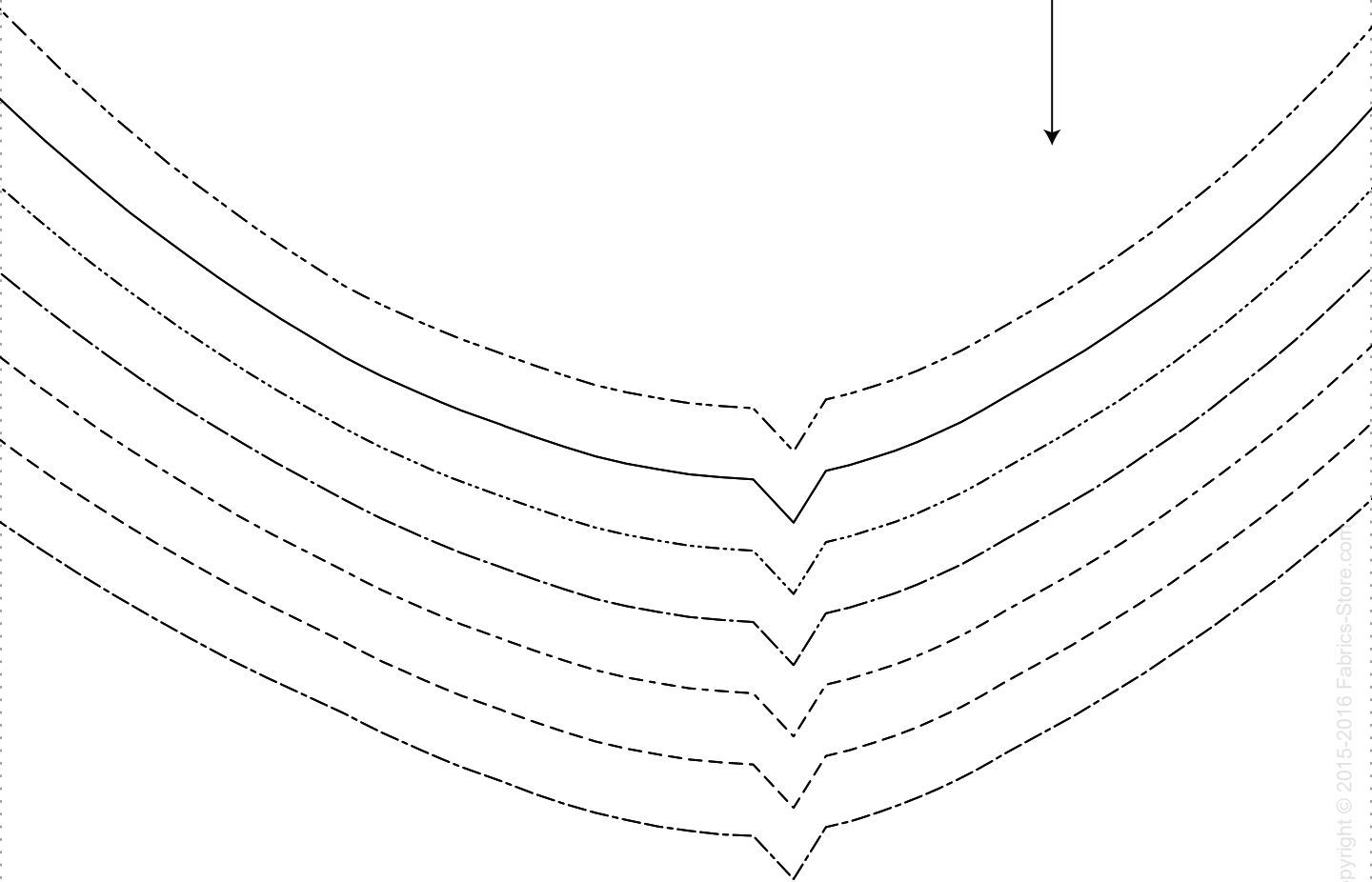
SLEEVE: CUT 2
(FACE TO FACE)

FABRICS-STORE.COM

F | S

ALLOWANCES INCLUDED
1/2"

1"
ALLOWANCE



HEM
SEAM /
IN

