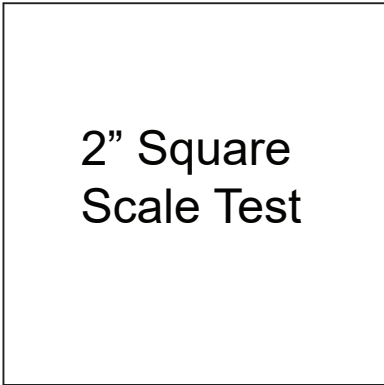


*Pattern (Part 2) for our “Half Sleeve Linen Dress” Tutorial*

<http://www.fabrics-store.com/blog/2014/09/19/half-sleeve-linen-dress-tutorial/>



2” Square  
Scale Test

**PRINT ONLY THIS PAGE FIRST TO CHECK SCALE**

**IMPORTANT! PRINT AT 100% SCALE  
PRINT USING CURRENT ADOBE ACROBAT READER**

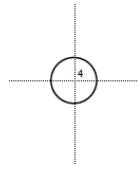
Get it FREE- <https://get.adobe.com/reader/>

*Formatted for paper sizes A4 and Letter.*

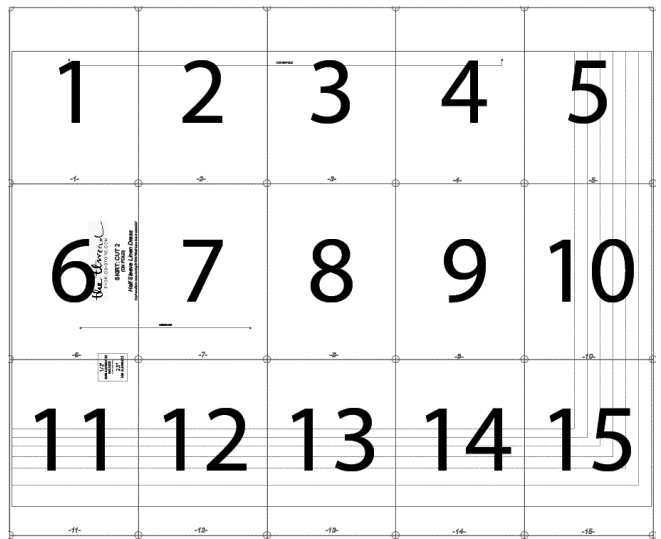
Sizes: 0/2 to 24/26  
Optional Front Bust Darts

*Please choose size based on desired  
finished garment bust measurement.*

0/2	4/6	8/10	12/14	16/18	20/22	24/26
34"	36"	38"	41"	44"	48"	53"

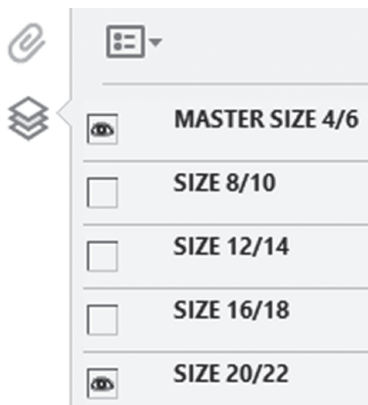
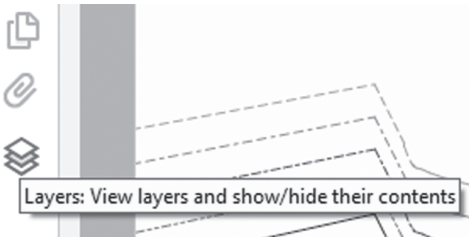


Simply overlap the page margins and align the markings in each corner to complete the circle and tape in place.



Layered PDF:

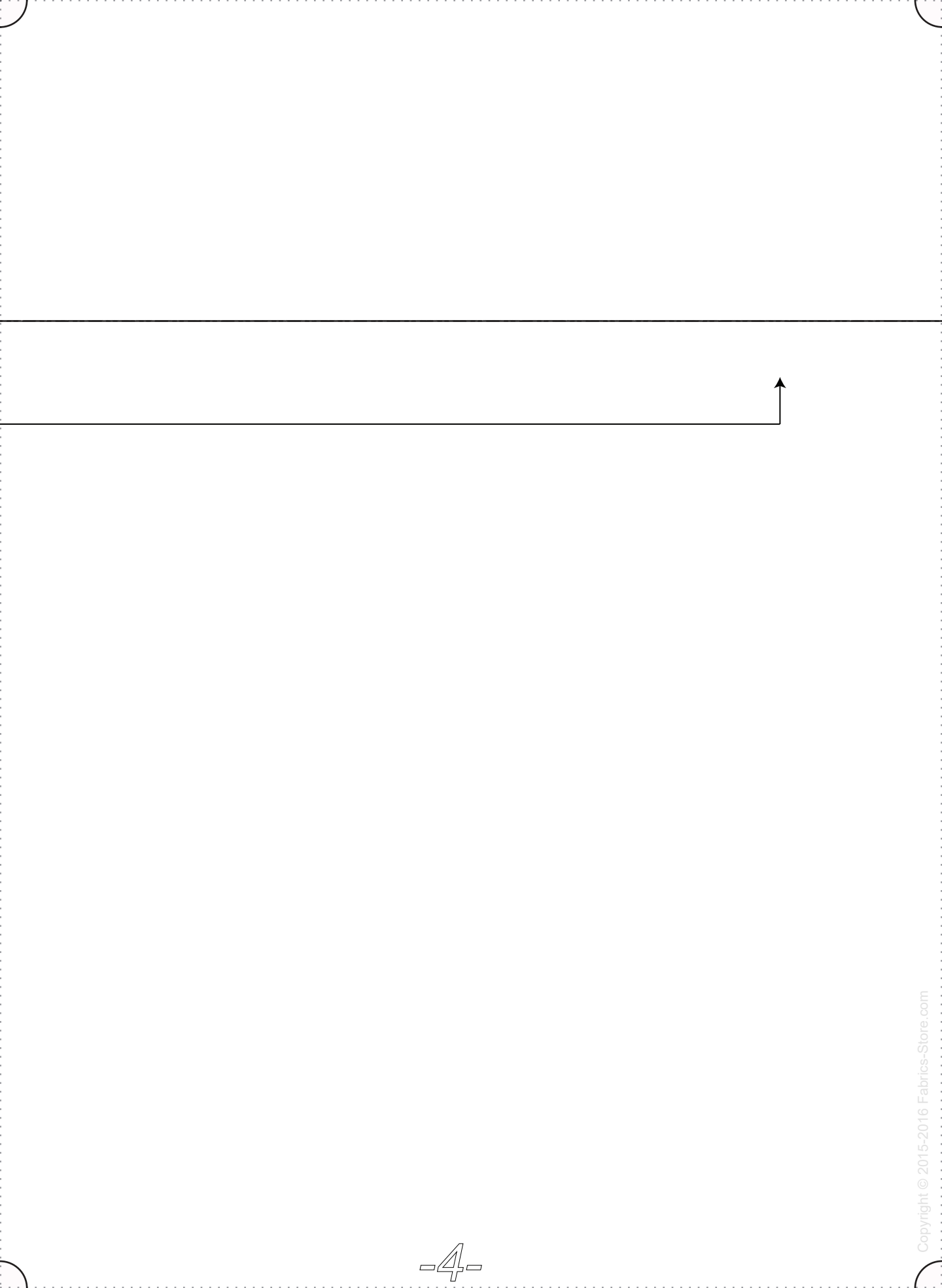
Turn on/off each size you would like to print, or print all.







CUT ON FOLD







FABRICS-STORE.COM

**SKIRT: CUT 2**  
(ON FOLD)

*Half Sleeve Linen Dress*

<http://www.fabrics-store.com/blog/2014/09/19/half-sleeve-linen-dress-tutorial/>

GRAINLINE



1/2"

SEAM ALLOWANCES  
INCLUDED

2.5"

HEM ALLOWANCE









Handwriting practice lines consisting of four sets of horizontal lines. Each set includes a solid top line, a dashed middle line, and a solid bottom line.







