

A PDF PATTERN BY MICHAEL ANN MADE



LITTLE BOW ZIPPER WALLET PDF PATTERN

THE LITTLE BOW ZIPPER WALLET PDF PATTERN BY MICHAEL ANN MADE

Photo Instructions PDF

So glad you're here to sew with me today!

This pattern is for a small zippered wallet that you can embellish with a ribbon and a sweet little bow. It is full of clear photos and helpful hints, so even the most beginning of sewers should be able to follow it.

Your set of files should contain -

1 INSTRUCTIONS PDF (this one!) that contains full photo instructions for constructing your wallet

1 TEXT ONLY PDF that contains only the text of the instructions for construction

1 PATTERN PDF that contains the patterns to cut out and use for cutting your fabric

Now Let's Get Technical -

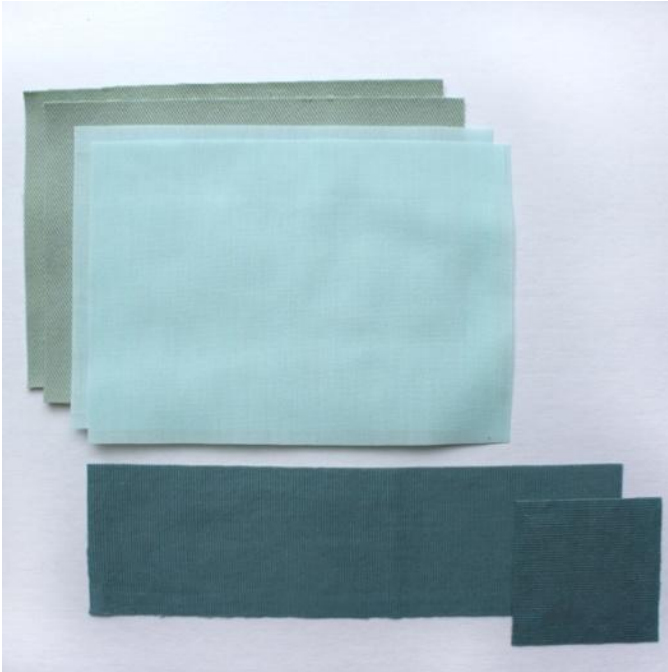
Finished Dimensions - 6" x 4"

Time to Complete - An Hour or Two (depending on expertise)

Materials Needed -

- 2 5" x 7" pieces of fabric for the outside of your bag. Can be most any type of medium to heavy weight fabric depending on the look you want. For this example I used a light weight canvas.
- 2 5" x 7" pieces of fabric for the lining. It is best to use a medium weight cotton fabric for the lining to reduce bulk.
- 1 9" x 2 1/2" and one 2 1/2" x 2 1/2" piece of fabric for the bow. Any medium weight fabric will do, and some heavy weight fabrics. I used a very light weight corduroy for the example.
- 1 7" zipper (the finished zipper length is 6"). If you have a zipper that is too long, I do go over tips for shortening zippers in the instructions.
- 1 5" piece of ribbon or lace if you want to add the extra embellishment.
- Coordinating Thread, Pins, Scissors, Hand Sewing Needle, and your Sewing machine and Iron! (for the example I used white thread to better see the stitching, but using a matching thread will make your bag look much more professional)





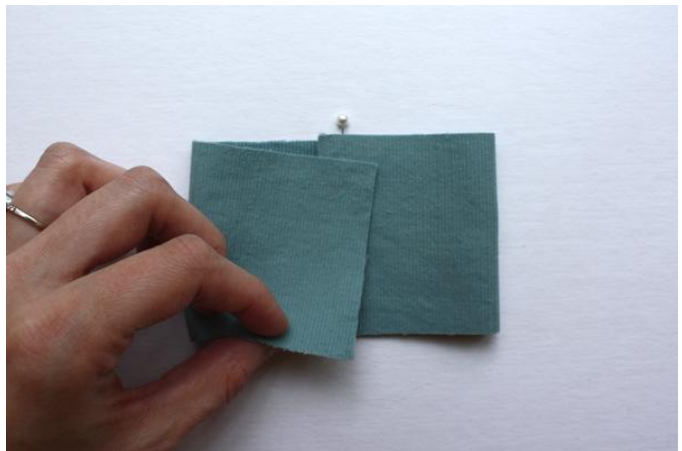
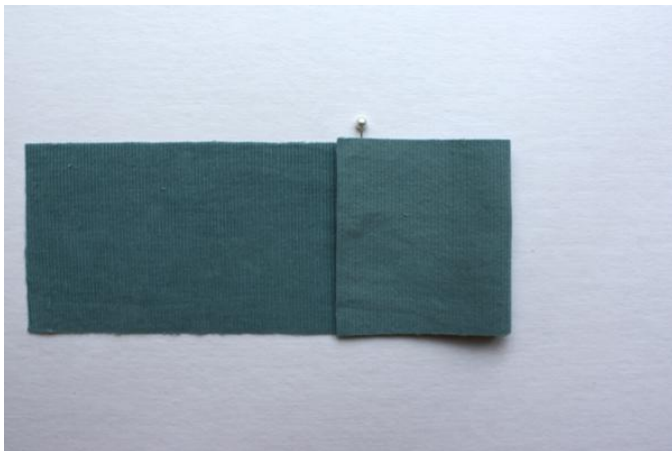
ARE YOU READY TO START?

- Cut out all of your pattern pieces before you begin
 - 2 outside pieces
 - 2 lining pieces
 - 1 bow and 1 bow binding piece
- Also have your zipper ready
- And have coordinating thread in your sewing machine

NOW LET'S GET SEWING!

We'll Start by Making the Bow -

- Find the middle of your bow piece by folding the piece in half, wrong sides together, matching the short ends. Then place a pin along the fold to mark where the middle is.
- Then fold both edges over, this time **right sides together**, extending the short ends about $\frac{1}{4}$ " over the middle marking, overlapping them.





- Pin along the long edges of the little envelope you just made, and stitch along the top and bottom long ends using a $\frac{1}{4}$ " **seam allowance**, backstitching at the ends.



- Clip the corners, making sure not to cut through your stitching, and press open the seam. I find that pressing one side down, then flipping the piece over and pressing the other side down works easiest with small pieces

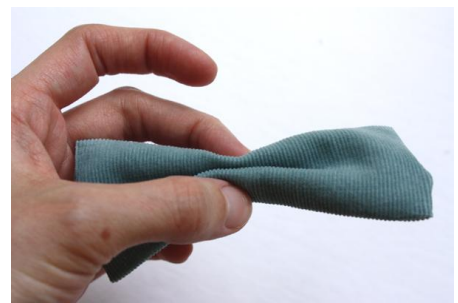
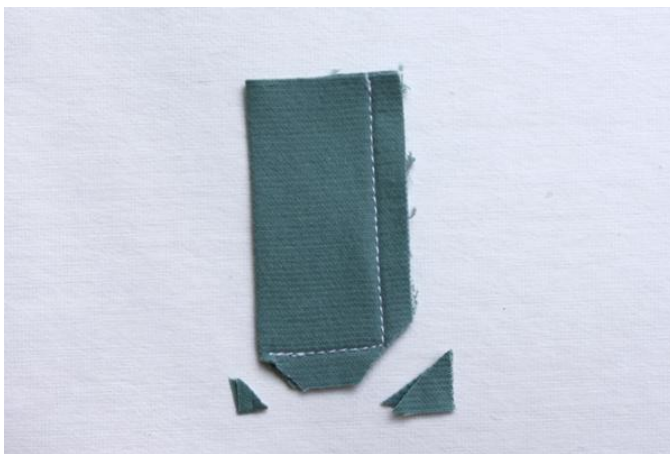


- After it's pressed, flip your bow right side out through the little envelope opening. Using a crochet hook or pencil can help you make your corners nice and pointy. Once your bow is right side out DON'T press it! The little bit of poofy-ness will make your bow more full.



Now to make the Bow Binding -

- Fold the piece in half, right sides together and stitch along the long end and one short end using a 1/4" **seam allowance**.
- Clip the corners and press the tiny seams open with your fingers or an iron.
- Then turn the piece right side out.
(it's very small so a crochet hook might help)



We're Almost Done with the Bow!

- Take the bow piece and fold it into a bow.
- I like to fold the piece in half inwards, then fold both of the edges in half again outwards. Pinch in the middle and you have a perfect bow!



- While still holding the bow, wrap the little binding piece around the middle, making sure the short end that was stitched overlaps on top of the short end that was left open.

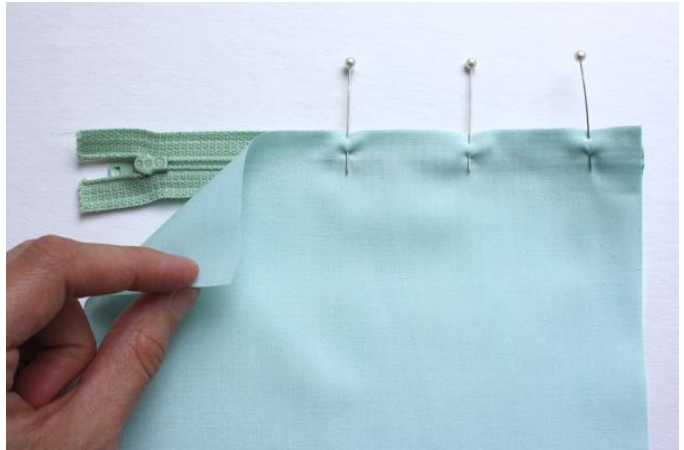


- With a hand needle and thread, stitch the binding piece to itself along the sewn short edge, securing that the bow will stay bow shaped. Now you're all done with your little bow!



Before Moving On - Let's make sure your zipper is the right length.

- If it is too long, line up the end of the zipper on a ruler, and mark with a pin the 6 1/2" point
- Using a hand needle, make a couple solid stitches around the zipper teeth at this mark, then cut the end of the zipper leaving a 1/2" tail. The stitch you made ensures the zipper doesn't zip off the end!



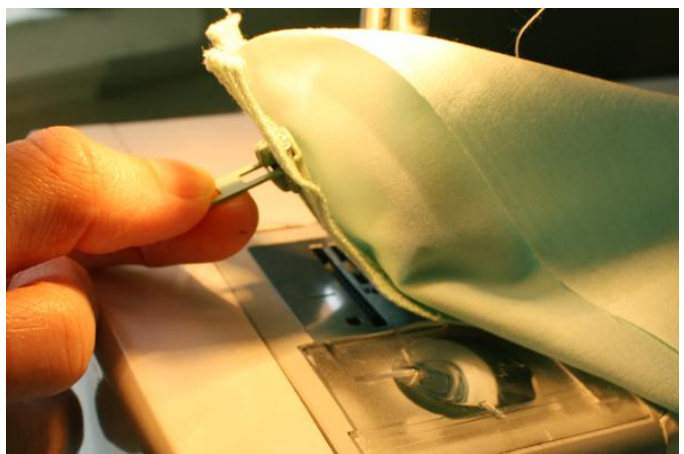
Now we get to start sewing the bag!

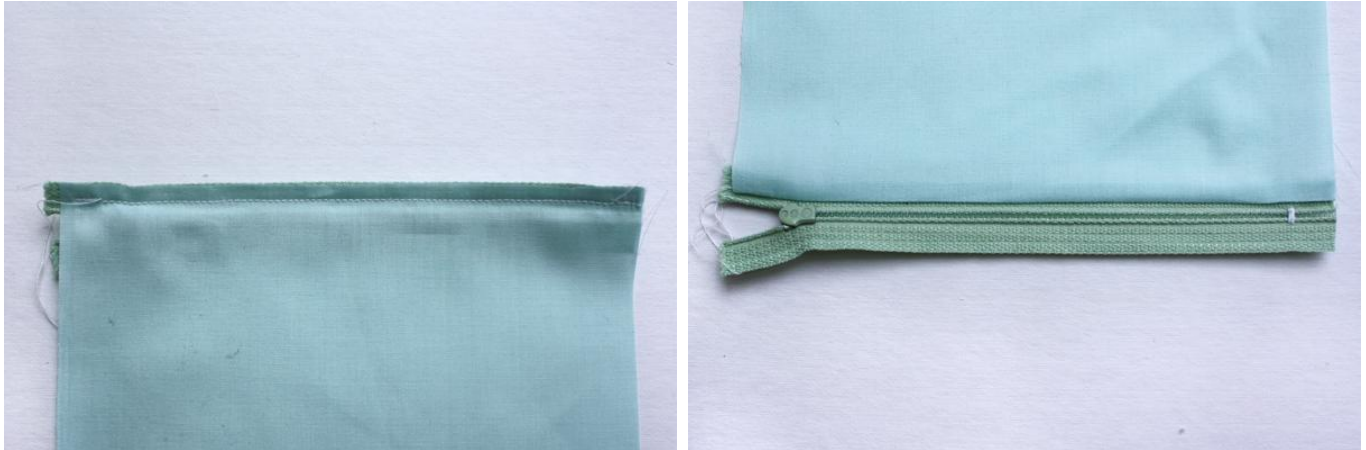
- Lay your zipper down face down, and a piece of your lining fabric face down.
- Pin the top edge of the fabric to the top edge of the zipper and stitch along that edge, using a zipper foot on your machine, about 1/8" to 1/4" away from the zipper.



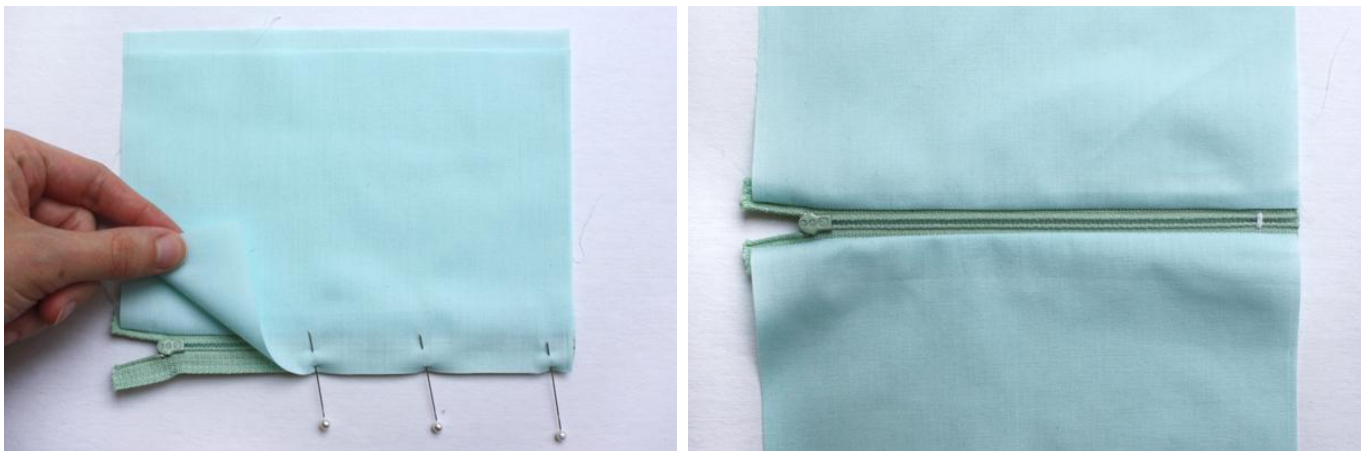
Here's A Tip When Sewing Zippers -

- Before you start sewing, pull your zipper down a couple inches.
- When you reach the point where you meet the zipper pull, stop sewing *with your needle down*, and lift your presser foot up.
- With a little bit of wiggling, pull the zipper back up to the top.
- Put your presser foot back down and continue sewing! You now have a completely straight seam!

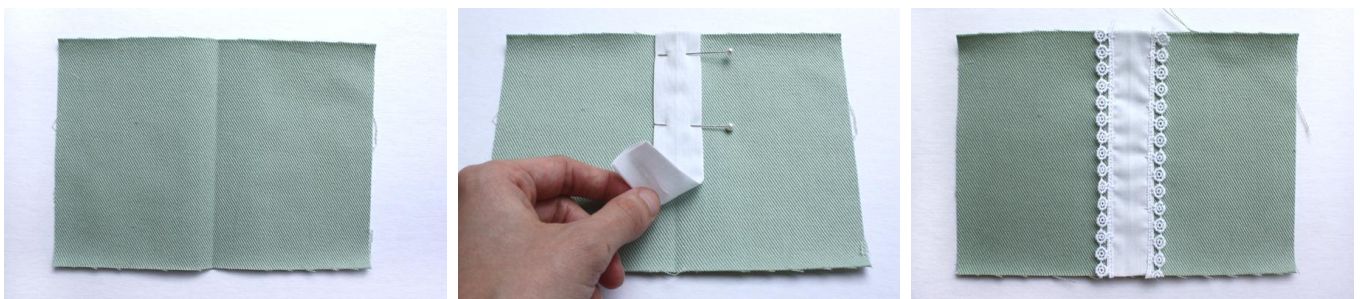




- When you are done sewing it will look like the piece on the left. Fold the fabric back to reveal the zipper, and press the lining fabric back along the seamline.

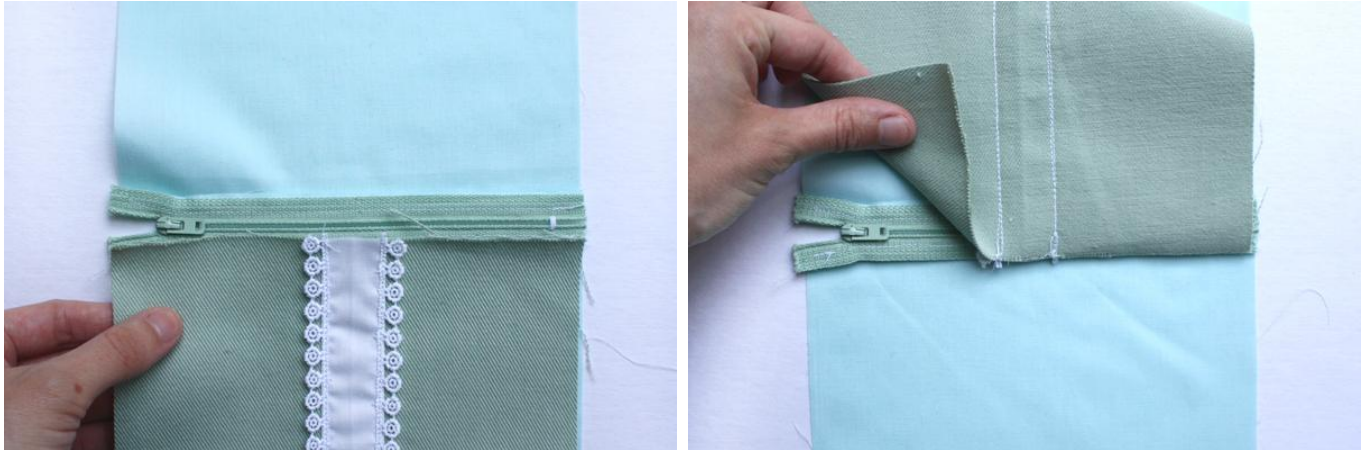


- Now sew the other side of lining following the same steps, making sure the right side of the lining fabric is facing down. When you're done sewing, press open the seam the same way as above so your piece looks like the right hand picture.



If you want to add a ribbon embellishment to the front of your bag, now is the time!

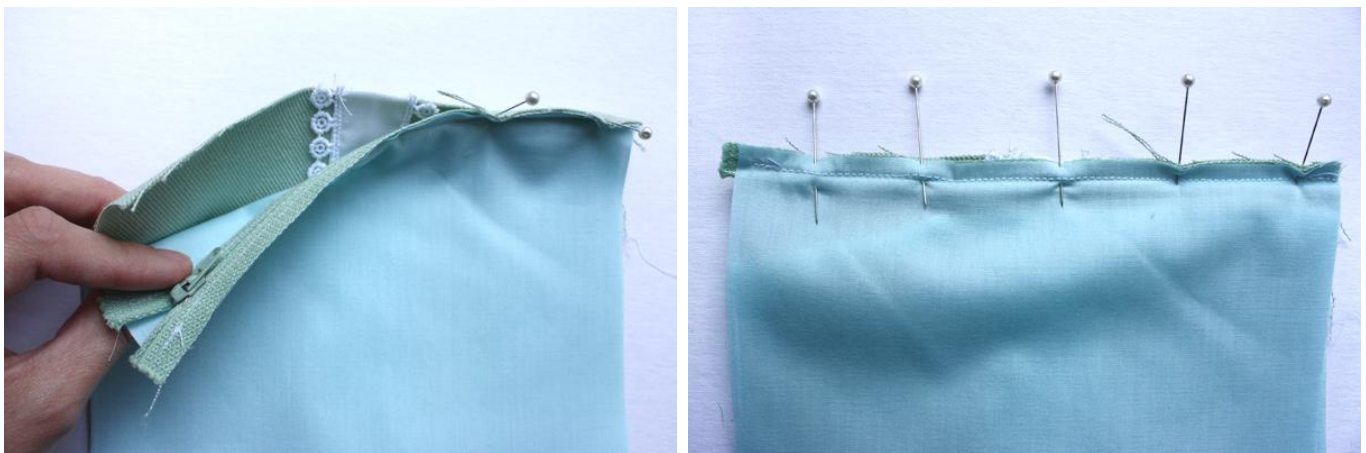
- Mark the center of your outside fabric piece by folding it in half and lightly pressing.
- Line your ribbon up with that center line, pin, and stitch in place.
- Stitching as close to the edge of your ribbon as you can will make it look super professional!



Time to Add the Front of the Bag -

(This part can be hard to visualize when doing this for your first time, so I suggest going through all the steps first before sewing, until you can get a grasp of what you need to do.)

- Lay your lining/zipper piece down so the zipper is facing up.
- Hold your front piece over the side of the zipper you want it to end up on.
- Since we want to sew so the raw edges are hidden, flip your front piece over so the right side is down over the zipper and the raw edge lines up with the zipper edge (just like when you sewed the lining)
- Now fold the lining back so you can pin the front piece to the zipper and sew along the edge.
- If you flip the pinned piece so the lining side is up, you'll notice you can see the stitching line from the lining. You can use this stitching line as a guide for sewing the outer piece!
- Once you're all set, go ahead and sew that edge, remembering your zipper sewing tips from earlier.



Now that wasn't too tricky, was it!



- After sewing, flip your outside and lining pieces back down and iron the outside piece along the seamline, creating a good crease along the zipper.
- Making sure the lining is also folded and pressed down, top stitch along the foldline of the outer fabric, as close to the edge as you can. This will make your bag look more professional, and ensure your fabric never gets caught in the zipper.

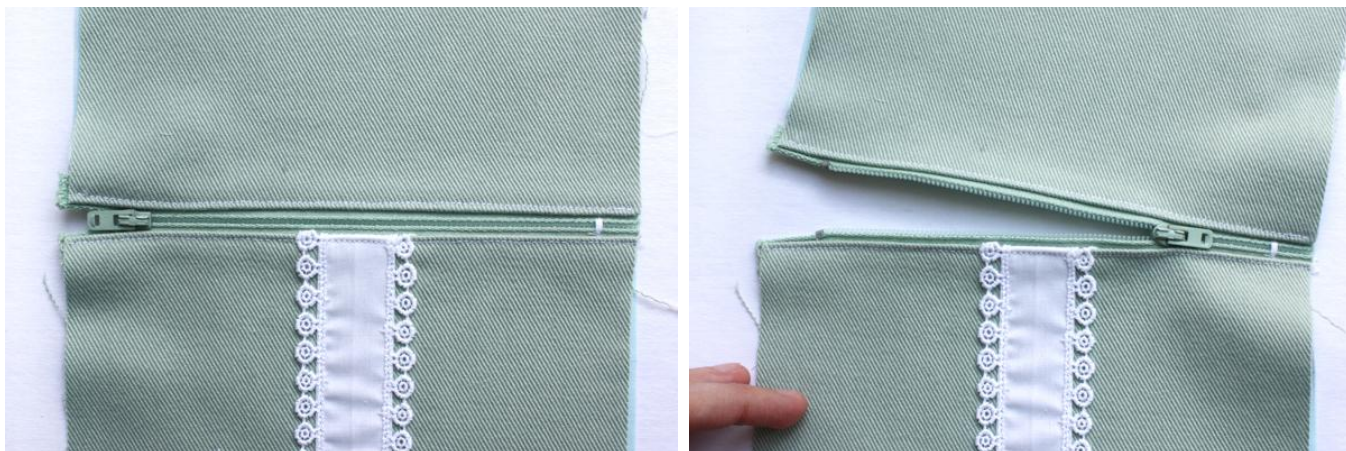
Follow the same steps above to sew the other piece of the outer fabric -



1) Imagine the placement

2) Flip it over

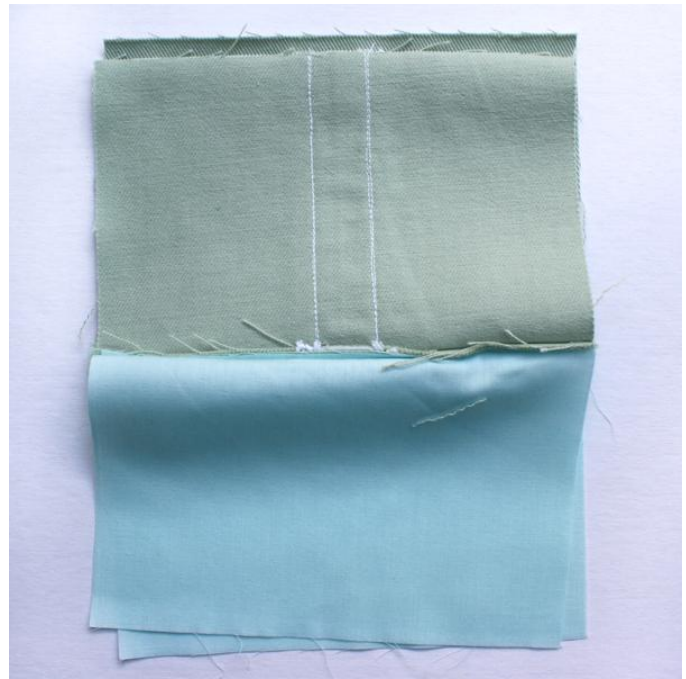
3) Line up raw edges, pin, sew



When you are done, fold down, iron, and topstitch just like on the other side.
Test your zipper and admire your work so far!

We're In Home Stretch Now!

- Pick up both of your outside pieces and fold them right sides together, and lay your whole piece down. Make sure that the **zipper is open** for this next part!



With the outside and lining pieces right side together, we are now going to sew our bag closed.



Start the pinning process by lining up the zipper. Fold the zipper and all of the seam allowances so they point towards the outside fabric and pin. Do this to both ends of the zipper.

Now pin along the rest of the bag's edges, making sure to match the lining and outside corners. Then sew around the whole bag using a $\frac{1}{2}$ " **seam allowance**, leaving a couple inch opening on the long end of the lining.



Hint About Corners -

When you come to a corner while you're sewing, lift your presser foot and turn the whole piece so you can continue stitching, instead of having to end and restart on the new side.



One more hint – When you come to the zippers, there will be a lot of bulk. Use your hand crank to walk your machine over the bulk instead of using your foot pedal. Also make sure that all of the seam allowances still point towards the outside fabric when you're sewing.

- When you're done, clip the corners and press the seams, also pressing the area you left open.





Now for the moment of truth – Turn your bag right side out through the lining opening!

If you forgot to leave the zipper open, this might prove difficult...

Also, use a crochet hook to help poke out the corners.



Before We Sew The Bow - We need to stitch closed the lining opening. Ironing the seam allowance earlier should give you two neat edges to line up and pin now. Either handstitch the opening closed, or sew with your machine, as close to the edge as you can.



Almost Done! Lay down your bag and decide where you would like to place the bow. When you've decided, pin the bow in place and thread your hand sewing needle with matching thread.



Use a running stitch to stitch the binding area of the bow to the bag.

You Sew a Running Stitch by – starting on the right side (if you're right handed) make a small horizontal stitch in the bag. Then make a small horizontal stitch in the bow right after it. When you pull the thread tight, you should not be able to see your stitches, and there might be a slight ladder look where the stitches are.

Do this all around the binding area of the bow until it is nice and secure! If you want, you can tack down the edges of the bow with small stitches, or you could leave the bow loose.



Now load your little wallet up with all your favorite things and you're ready to go! **Great Work!**

If you have questions or comments or want to show off your work, please email me at michaelann@michaelannmade.com

Hope you had fun!

LITTLE BOW ZIPPER WALLET

OUTSIDE AND LINING PIECE FOR BAG

CUT 2 – OUTSIDE FABRIC

CUT 2 – LINING FABRIC

www.michaelanmade.com
for personal use only

ONE INCH

BOW BINDING

CUT 1 –

BOW FABRIC

www.michaelanmade.com
for personal use only

When printing make sure that you

Select "Print Actual Size"

Measure the Inch Mark above to check

LITTLE BOW ZIPPER WALLET

BOW PIECE

CUT 1 – BOW FABRIC

www.michaelanmade.com
personal use only