

Sunday: My Way-Life's Little Everything Bag

The Sunday Bag was designed to be like a lazy Sunday afternoon- A Blank Canvas. The design was created to be simple; a beginner sew, but an open canvas for those that like to add their own creativity. This little Everything Bag features a slip pocket on the front, a wide mouth opening, and cute carry straps. Perfect as it is, or make Sunday "My Way". Add some piping, zipper pockets, use the zipper pulls to add a longer carry strap, omit the fleece and make a soft-sided bag. Play with contrasting fabrics, or mix some textiles, quilt it, embellish it... the possibilities are endless!



Finished size measures: 12" wide, 6" tall, and 4 ½" deep.

Make sure print setting is set at "Do Not Scale" or "100% Scale" depending upon your printer settings. Always print *Actual Size*.

Feel free to sell your bags made with my pattern but please do not sell or share the pattern.

Copyright 2016 - RLR Creations

Materials Needed:

5/8 yard 44" wide Quilting Weight or Décor Weight Main Fabric

5/8 yard 44" wide Quilting Weight Lining Fabric

1 ¼ yard Fusible Pellon SF 101 or a woven shaping Interfacing (Medium Woven Shapeform Interfacing)

1/2 yard Fusible Fleece -TP971F-Pellon Fleece Thermolam Plus

1/2 yard Fusible Décor Bond - Pellon 809/ or 1 yard 808 Firm Stabilizer

1 Piece Peltex 72f Ultra Firm 2-sided Fusible at least 4.5" x 13"

1- Coordinating Zipper 18" or longer

Coordinating thread

Removable Fabric Marker (I recommend a Frixion gel pen as it can be removed by pressing with an iron)

Microtex (Sharp) Needle 80/12 –Recommended for topstitching through the thicker parts.

Cutting:

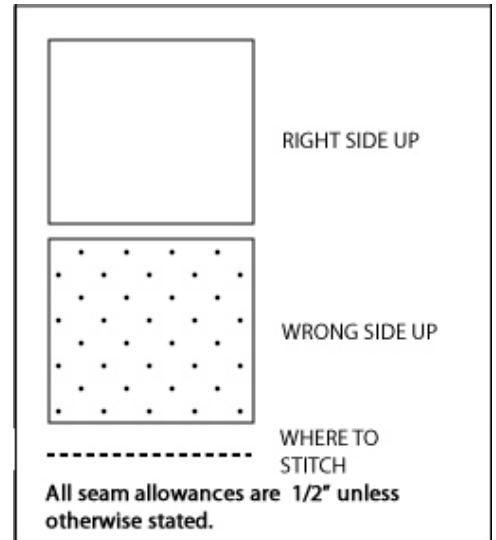
1. Print and cut out all of the pattern pieces.

NOTE: Make sure print setting is set at "Do Not Scale" or "100% Scale" depending upon your printer settings.

2. Cut out all pieces from Fabric, and Interfacings as directed on each pattern piece.

ADDITIONALLY CUT:

- **PIECE G- Handles:** 2 ¼" x 26" Cut 2 Main Fabric, 2 Lining Fabric,
 - 2 Heavy Interfacing 4" x 26"
- **PIECE H- Bottom Stabilizer:** – 13" x 4 ½" Cut 1 Peltex 72f Ultra Firm Stabilizer



Before beginning you should have the following pieces:

Piece A- Main Panels: 2 Main Fabric, 2 Lining Fabric, 2 Heavy Interfacing, 2 Light Interfacing

- **Piece A Fleece:-** 2 Fusible Fleece

Piece B: Front Slip Pocket (Optional) : 1 Main Fabric, 1 Lining Fabric, 1 Light Interfacing

Piece C- Top Panels: 2 Main Fabric, 2 Lining Fabric, 2 Heavy Interfacing, 2 Light Interfacing

- **Piece C Fleece:-** 2 Fusible Fleece

Piece D- Side Panels: 2 Main Fabric, 2 Lining Fabric, 2 Heavy Interfacing, 2 Light Interfacing

Piece E-Bottom Panels: 1 Main Fabric, 1 Lining Fabric, 1 Heavy Interfacing, 1 Light Interfacing

- **Piece D/E Fleece:-** 1 Fusible Fleece

Piece F Zipper Pulls: 2 Main Fabric, 2 Light Interfacing

Piece G Handles: 2 Main Fabric, 2 Lining Fabric, 2 Heavy Interfacing

Piece H Bottom Stabilizer: 1 Peltex Stiff Stabilizer

Preparing:

MAIN FABRIC PIECES:

1. Fuse the Heavy (Décor Bond 808) Interfacing to each corresponding WRONG SIDE of all Main Fabric pieces **EXCEPT** for the Handle pieces. (These will be added later.)
2. Center and fuse the Fleece (TP971F-Pellon Fleece Thermolam Plus) to each corresponding WRONG SIDE of all Main Fabric pieces, **EXCEPT** for the D/E piece (This will be added after joining the Bottom and Sides together).
3. For the optional Front Slip Pocket (Piece B) fuse the interfacing to the Main Fabric piece.

The Piece H Bottom Stabilizer will be added later.

***NOTE:** When the fleece is fused to Main Fabric Pieces it will allow you a ½” seam allowance on all sides.

LINING FABRIC PIECES:

1. Fuse the Light Interfacing (Sf-101) to the corresponding WRONG SIDE of all Lining Fabric pieces.

Instructions to Complete Bag:

Optional Front Slip Pocket:

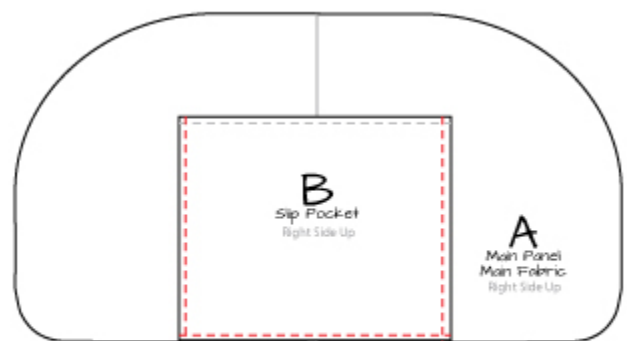
1. Place the two Front Slip Pocket pieces (Piece B) pieces **RIGHT SIDES TOGETHER** and Pin.
2. Stitch along the top of the two pocket pieces with a $\frac{1}{2}$ " seam allowance.
3. Turn right sides out and press the seam towards non interfaced piece.
4. Top stitch along the top edge.
5. Fold the finished pocket in half vertically and press or crease to mark the center.

6. Take one of your Main Fabric Main Panels (Piece A) and place **RIGHT SIDE UP**, fold in half vertically and press or crease to mark the center.

7. Pin the finished Pocket panel **RIGHT SIDE UP** on top of the Main Panel; aligning the center creases you made on the two pieces and matching the bottom raw edges.

8. Baste the Pocket to the Main Panel piece along the sides and bottom (The handles you will add later will cover the raw side edges of the pocket).

Set aside.



Center the Slip Pocket on the Main Panel, matching the bottom raw edges and baste the pieces together along the sides and bottom of Pocket Piece.

Handles:

1. Place one of the Main Fabric Handle pieces and one of the Lining Fabric Handle pieces (Piece G) **RIGHT SIDES TOGETHER** and sew the pieces together down one long side with a $\frac{1}{4}$ " seam allowance.
2. Press the seams open; your piece should now measure 4" x 26"
3. Repeat with the second two Handle pieces.



Place one main fabric and one lining fabric Handle pieces Right Sides Together, and sew together with $\frac{1}{4}$ " seam allowance.



Press the seams open. Your piece will now measure 4" x 26"

4. Fuse the interfacing to the Handle pieces.

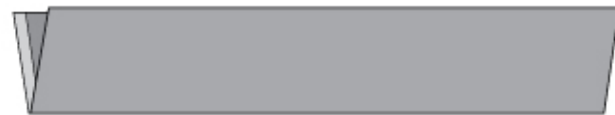
5. Take the two finished Handle (Piece G) pieces and with WRONG SIDES TOGETHER fold the handles in half lengthwise and press to create a crease, then open.



Fold each raw edge lengthwise towards center seam and press

6. Now fold each edge towards center crease and press. Fold in half and press again. Each piece should now measure 1".

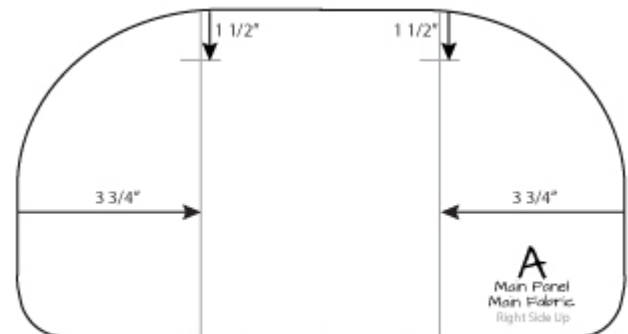
7. Top Stitch across both long sides about 1/8" from edge on both pieces.



Fold piece in half again to enclose the raw edge and press. Piece should now measure 1"

Adding the Handles:

1. Take the Exterior Front Main Panel (Piece A), the one you added the pocket to, and place RIGHT SIDE UP. Measure and mark a vertical line 3 3/4" in from each side, or you can use the pattern piece A handle marking to mark your handle placements. Next measure and mark a horizontal line across each vertical line you just drew 1 1/2" from top raw edge. This will aid you in placing the handle straps.



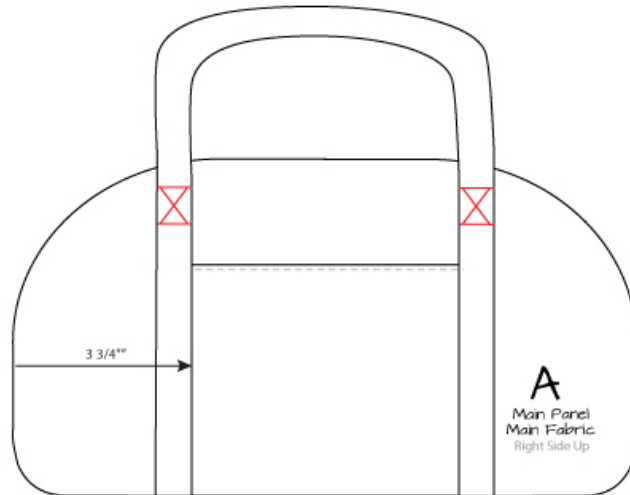
Measure and mark for the handle placements on both Exterior Main Panel Pieces.

2. Take one of your finished Handle (Piece E) pieces and align the bottom raw edge with the bottom of the Main Panel piece against the vertical line you drew. Pin the strap down onto the Main panel along the vertical line all the way up till you reach the 1 1/2" horizontal line.

3. Repeat with the other end of the Strap piece along the vertical line along the other side.

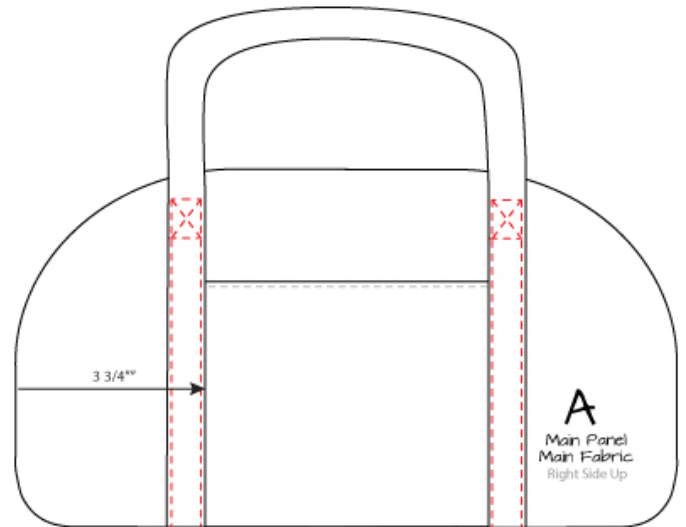
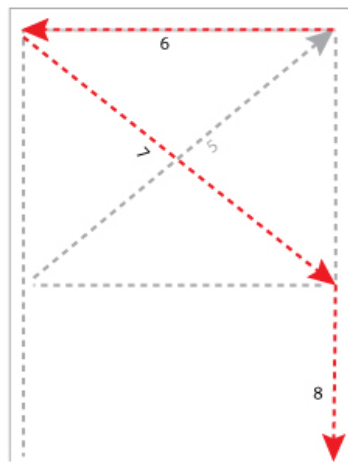
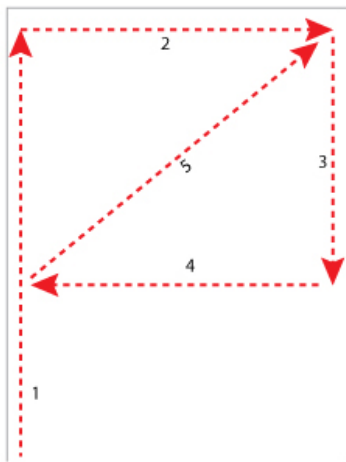
***NOTE:** You can either place the Exterior fabric RIGHT SIDE UP or the Lining side fabric up to add some contrast.

4. To aid in sewing the stitch box at the top of the handles draw a line across the straps down 1 1/2" from the top of the Main panel and another horizontal line across the handles 2 1/2" down from the top. Now draw two diagonal lines from corner to corner to form an X.



5. Starting at the bottom outer edge of the Handle sew to the Main Panel by following the line of top stitching on the handle until you reach 1 1/2" below the top raw edge of the Main Panel.

6. Lift your pressure foot and sew across the strap until you reach the top stitching along the other edge. Next sew a 1" rectangular box at the top, making sure your top line is 1 1/2" below the top edge of the Main panel.



7. Sew down the opposite side following the line of existing top stitching.

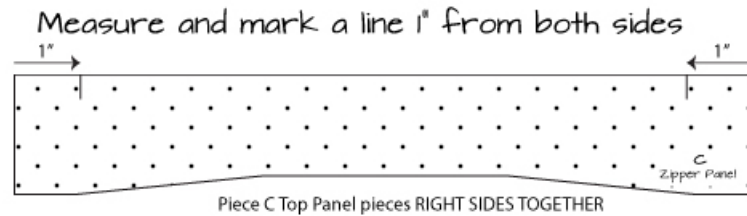
8. REPEAT STEPS 4-7 to sew the Strap to the other side of the Main Panel.

9. Take the Exterior Back Main Panel and REPEAT STEPS 1-8 above to add the second Handle (Piece G) to the second Main Fabric Main Panel (Piece A) piece.

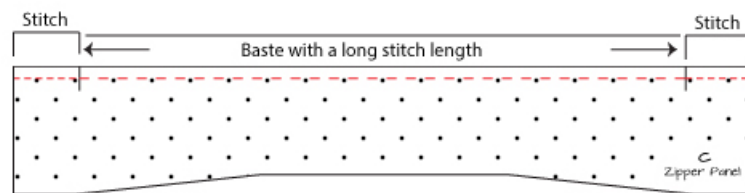
Set the pieces aside.

Top Zipper Panels:

1. Place the two Main Fabric Zipper Panels (Piece C) RIGHT SIDES TOGETHER. Pin along the long straight edge.
2. Measure 1" in on both sides along the top and mark.



3. Sew across the top with $\frac{1}{2}$ " seam allowance, stopping at the first mark you made. Backstitch and change to a long, basting stitch length. Sew across till you reach the next mark and change back to the normal stitch length and sew the remaining 1" backstitching at the mark and the end.

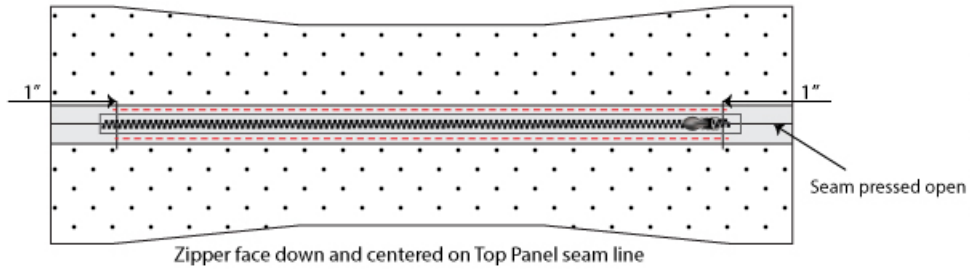


4. Repeat the last 3 steps with the Lining Fabric Zipper panels (Piece C), except you do not need to baste the center; just mark and stitch the 1" on both sides.
5. Press the seams open on both completed Top Panels. For the Lining Fabric Top panel fold under the center unstitched edges $\frac{1}{2}$ " and press.

The Lining Zipper Panel Piece is finished. Set aside.

Adding the zipper to the Main Fabric Top Panel:

1. Place your finished Main Fabric Zipper Panel (Piece C) WRONG SIDE UP with seam pressed open. Lay the zipper centered on top WRONG SIDE UP, making sure the zipper teeth "lay" along the center seam.
2. Sew down the zipper along both sides starting and stopping at the 1" marks (1" in from each short edge) $\frac{1}{4}$ " away from the center of the zipper (zipper teeth). You can use a zipper foot if you prefer but is not necessary, just be sure to sew your lines $\frac{1}{4}$ " away from the zipper teeth. Sew down both short sides of the zipper to close the ends making sure your zipper pull is inside the 1" mark.



***NOTE:** These stitch lines will be visible on the outside of the bag.

3. After the zipper is attached, turn the piece over and use a seam ripper to remove the basting stitches you created earlier to reveal the zipper.

Zipper Panels are finished. Set Aside.

Side Panels:

Zipper Pulls:

1. With **WRONG SIDES TOGETHER** fold one of the Zipper Pulls (Piece F) in half lengthwise and press to create a crease then open.
2. Now fold each edge towards center crease and press. Fold in half and press again. Each piece should now measure 1" wide.
3. Top Stitch across both long sides about 1/8" from edge.
4. REPEAT Steps 1-3 with second Zipper Pull (Piece F).



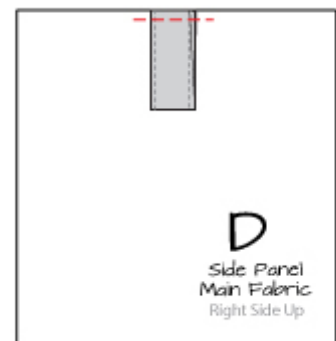
Fold each raw edge lengthwise towards center crease and press (Piece will now measure 2" wide).



Fold piece in half again to enclose the raw edge and press. Piece should now measure 1" wide.

Add Zipper Pulls to Side Panels:

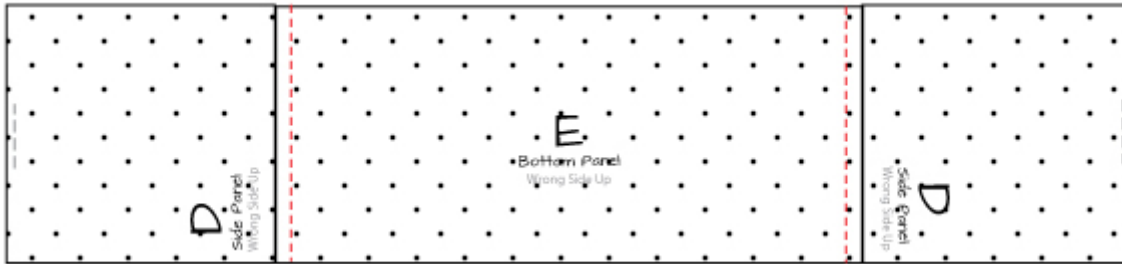
1. Take one of the Main Fabric Side Panels (Piece D) pieces and place **RIGHT SIDE UP**. Fold one of the finished Zipper Pulls in half and center the raw edges, with the raw edges aligned with the top of the Side Panel piece. Pin in place.
2. Baste the piece in place by stitching 1/4" away from top raw edge.



3. Attach the second Zipper Pull piece in the same manner to the other Side Piece Main Fabric.

Joining the Bottom, Sides and Top Panel:

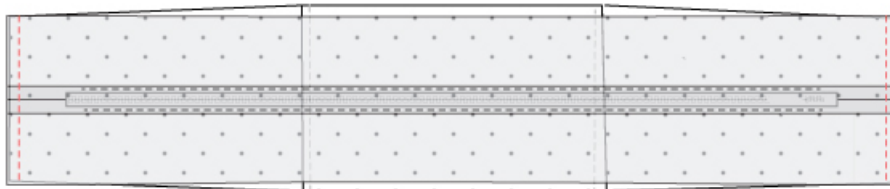
1. Match the Main Fabric Side Panel (Piece D) pieces bottom raw edges (end without Zipper Pulls) with the raw short sides of the Bottom Panel (Piece E) RIGHT SIDES TOGETHER, and pin.
2. Sew together with $\frac{1}{2}$ " seam allowance.



3. Press the seams open and topstitch both sides $\frac{1}{4}$ " from seam on the bottom Panel.
4. Center the Piece D/E Fusible Fleece piece to the WRONG SIDES of the finished Exterior Sides/Bottom Piece.

***NOTE:** When the fleece is fused to Main Fabric Pieces it will allow you a $\frac{1}{2}$ " seam allowance on all sides.

5. Match the Main Fabric Side Panels Pieces (Piece D) top raw edge with Main Fabric Top Panel (Piece C) raw ends, RIGHT SIDES TOGETHER and pin.
6. Sew together with $\frac{1}{2}$ " seam allowance.



Connect the top Side Panel (Piece D) pieces to Top Panel (Piece C) by sewing short edges together with $\frac{1}{2}$ " seam allowance

7. Press the seams open and topstitch both sides $\frac{1}{4}$ " from seam on the side Panel, making sure your Zipper Pulls face the top Panel.

Your finished piece will be a big circle shape.

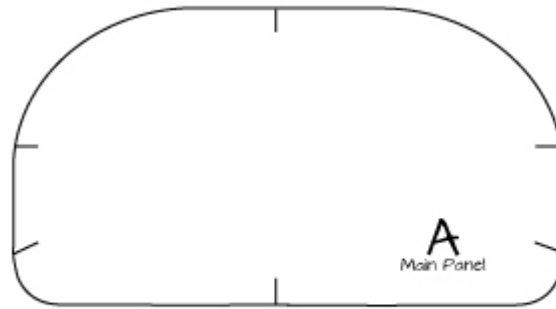
8. Repeat steps 1-3 then Steps 5-7 with the Lining Fabric Pieces.

Assembling the Exterior and Interior:

Assembling the Exterior and Interior:

1. Take the 4 Piece A Main Panels (2 Main and 2 Lining) fold in half matching the top, side, and bottom raw edges and press or mark the center at the fold on the top and bottom of each piece.

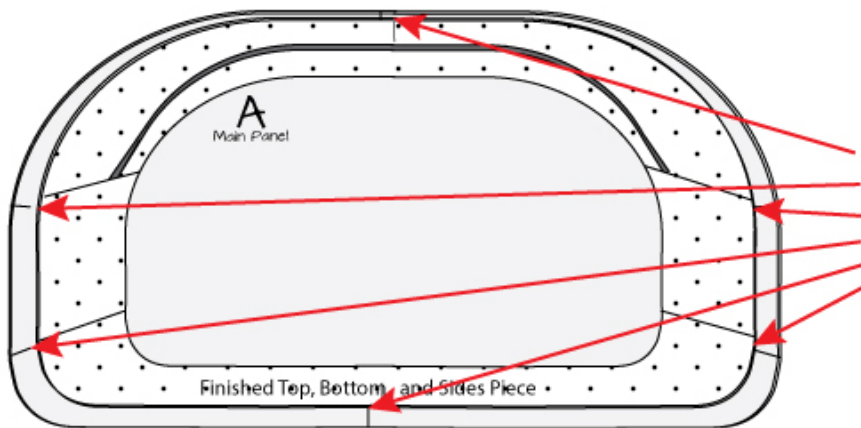
2. Using the pattern piece, transfer the markings on the bottom sides of the pattern to aid you in placing the finished Top/Sides/Bottom Piece.



Mark the center and placement marks from pattern piece to aid in adding the sides to the Main Panels.

3. Take the two finished Top/Sides/Bottom pieces (1 Main and 1 Lining) and fold in half matching the seams press or mark the center at the fold on both sides of the top and bottom of each piece.

4. Place one of the Main Fabric Main Panels (Piece A) pieces RIGHT SIDE UP. Open the zipper and place the Main Fabric Top/Sides/Bottom pieces finished piece on top RIGHT SIDES TOGETHER, match the top center marks of both pieces and pin together. Match and pin the bottom center marks of both pieces and pin together. Pin the side marks to the top and bottom seams of the side panels.



Match the top and bottom lines you made on both pieces RIGHT SIDES TOGETHER and pin. Match the Side Panel seams with sides markings you made and pin.

Continue to pin the finished Top/Sides/Bottom Piece to the Main Panel all the way around. Sew together with a 1/2" seam allowance.

5. Pin all the way around the pieces, easing the pieces together as you pin.

***NOTE:** Be sure to place your pins or clips close together as you pin around the circle to hold everything in place. You will need to reposition the side panel as you sew the circle to keep them out of the way, **so go slowly**. It is best to sew around the pieces with the Side Panel facing up so you can move around the piece easier; pushing the Side Panel out of the way to keep from getting extra "puckers".

6. Stitch all the way around the Main Panel to connect the two pieces with a 1/2" seam allowance.

7. Trim the seam allowance to ¼" around from where the seams start around the bottom of the piece. **DO NOT trim the seam around the top Zipper Panel pieces.** If you please you can clip around the bottom Main Panels curves; staying well within the seam allowance

8. Repeat steps 3-6 to attach the other Main Fabric Main Panel to the other side of the Side Panel.

***NOTE:** BE SURE YOUR ZIPPER IS OPEN BEFORE SEWING so you can turn the piece right sides out.

8. Repeat the steps 4-8 again to attach the Interior Side piece to the Interior Fabric Main (Piece A) Panels but *use a 5/8" seam allowance.*

9. Turn both finished pieces RIGHT SIDES OUT and press the seams around the pieces really well to flatten.

10. Fuse the Bottom Stabilizer (Piece H) Peltex to the bottom of the Exterior bag piece.

Assembling the Exterior and Interior:

***NOTE:** For a step by step tutorial on completing the drop in lining you can visit my post on Georgia Totes Blog here: <http://georgiatotesblog.com/>

1. Open the zipper all the way and turn the Exterior WRONG SIDE OUT. Fold the Top Panels inward to expose the top seam (you left un-trimmed in Step 7 above).

2. With the Interior RIGHT SIDES OUT, fold the Top Panel outward to expose the top seam (untrimmed seam).

3. Place the Exterior inside the Interior, WRONG SIDES TOGETHER.

4. Align the Exterior top seam allowance on one side of the bag to the Lining top seam allowance starting at one side of the Top Panel and pin all the way across to the other end of the Top Panel, making sure to match up the lines of stitching.

5. Starting as close to the side seams of the Side Panel as you can, sew through both seam allowances of the Exterior and Interior across as far as you can to the side seam on the opposite side of the bag. Be sure to stitch through the existing stitches on both pieces.

***NOTE:** Make sure you are only sewing through the seam allowances, and keep the Zipper Panel pieces out of the way so you don't sew through them.

6. REPEAT Steps 3-5 to connect the Top Panel seams on the other side of the zipper.

7. Trim the seam allowances close to the stitching and turn the piece so that the Exterior is RIGHT SIDES OUT. Align the bottom pieces and sides so your Interior sits nicely in the Exterior.

8. Press the Bottom of the bag from the inside and out to fuse the Peltex between the layers, making sure the Lining is sitting nice and tight inside the Exterior.

9. Fold the top Zipper Panel back in place. Match the top of the Lining top Panel along the folded in edges along each side of the zipper covering the lines of stitching you made when you attached the zipper to the Exterior, but making sure the lining sits right under the zipper teeth so the zipper can open without catching the lining.

10. With the Exterior face up, topstitch the lining in place, following along in the existing zipper stitch line. Check to be sure you are catching the lining.

Your Sunday Bag is finished!

We would love if you would share your new Sunday Bag with us:

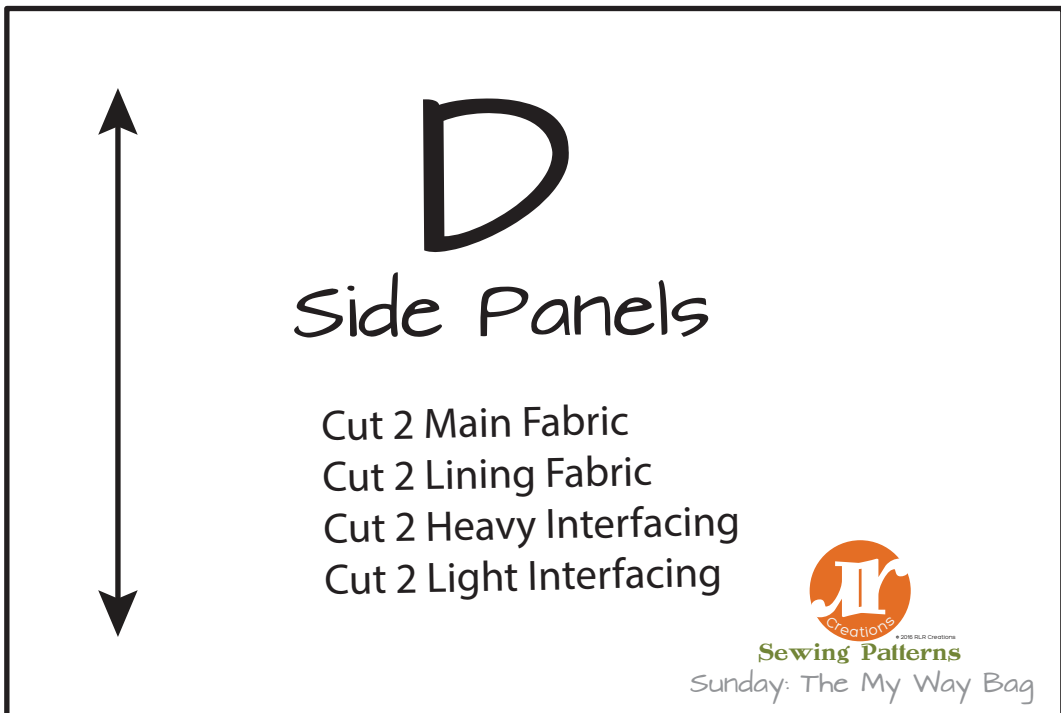
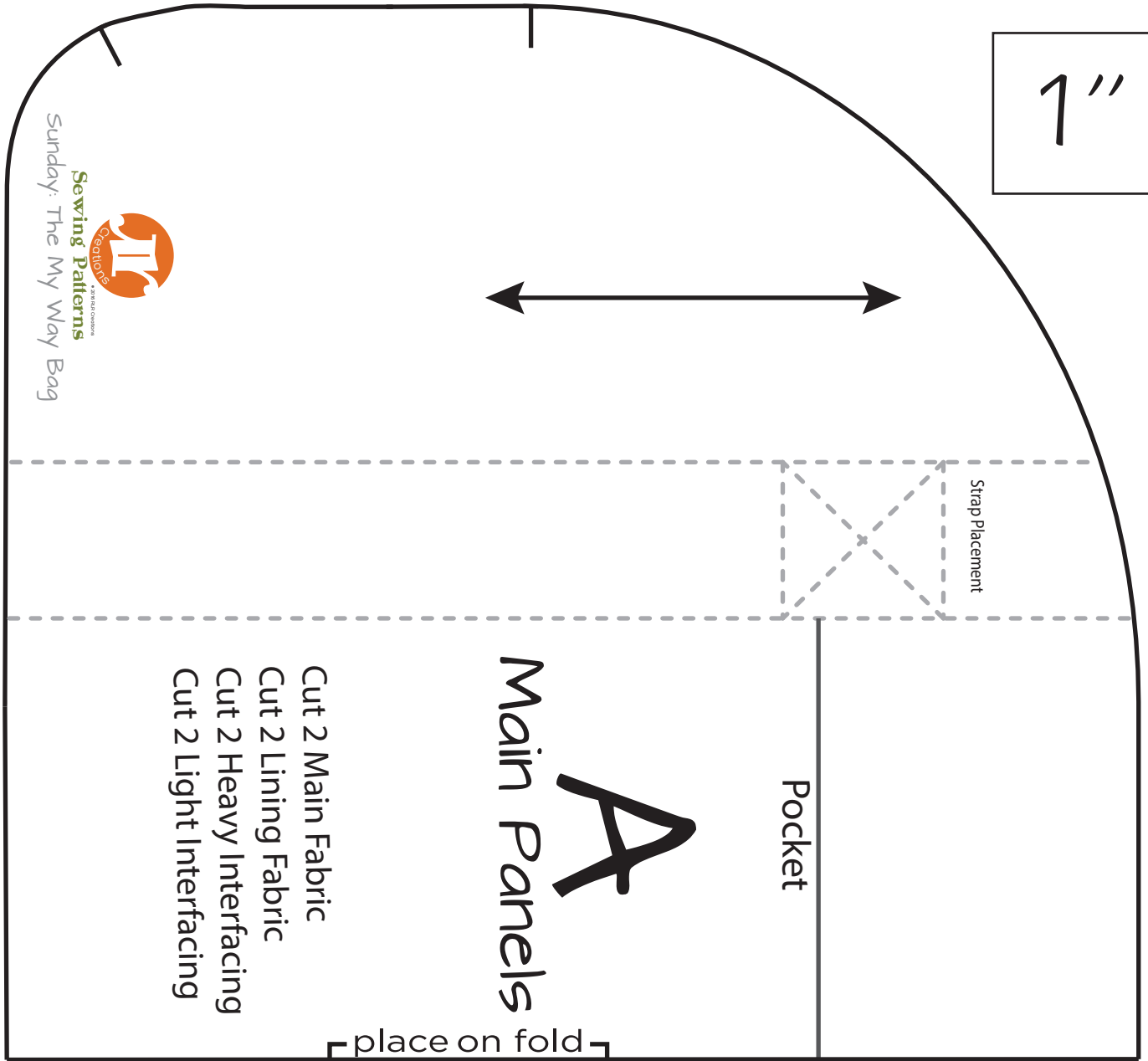
<https://www.facebook.com/groups/RLRCreationsSewingPatterns/> ...also a great place to get help if you have any questions or concerns.

RLR Creations- hang.ups19@yahoo.com



1"

Sunday: The My Way Bag
Sewing Patterns
Creations



C Top Panels

- Cut 2 Main Fabric
- Cut 2 Lining Fabric
- Cut 2 Heavy Interfacing
- Cut 2 Light Interfacing



Sewing Patterns

Sunday: The My Way Bag

place on fold

F

Zipper Pulls

- Cut 2 Main Fabric
- Cut 2 Light Interfacing



Sewing Patterns

Sunday: The My Way Bag

1"

1"

B

Front Pocket

Cut 1 Main Fabric
Cut 1 Lining Fabric
Cut 1 Light Interfacing



Sewing Patterns

Sunday: The My Way Bag


1"

E
Bottom Panels

- Cut 1 Main Fabric
- Cut 1 Lining Fabric
- Cut 1 Heavy Interfacing
- Cut 1 Light Interfacing

↔

place on fold



Sewing Patterns
with a Creative Twist

Sunday: The My Way Bag

Top Panels
Fleece

C

Cut 2 Fusible Fleece



place on fold

D/E
Side/Bottom Fleece

Cut 1 Fusible Fleece

place on fold



1"

