



So Sew Easy

Wear Everywhere Dress

An easy to sew and versatile pattern. Great for beginners.

This simple shift dress with built on sleeves really is a wear anywhere and everywhere dress. Mix it up with prints or solids, make it is a classy black for a simple evening dress. Wear it to the office, the shops, lunch with the girls. Simply slip it on and run out the door and you'll always be perfectly dressed for every occasion.

You'll certainly want to make a whole wardrobe full of these Wear Everywhere Dresses.

For stretch knit fabrics only.



**WEAR
EVERYWHERE
DRESS**

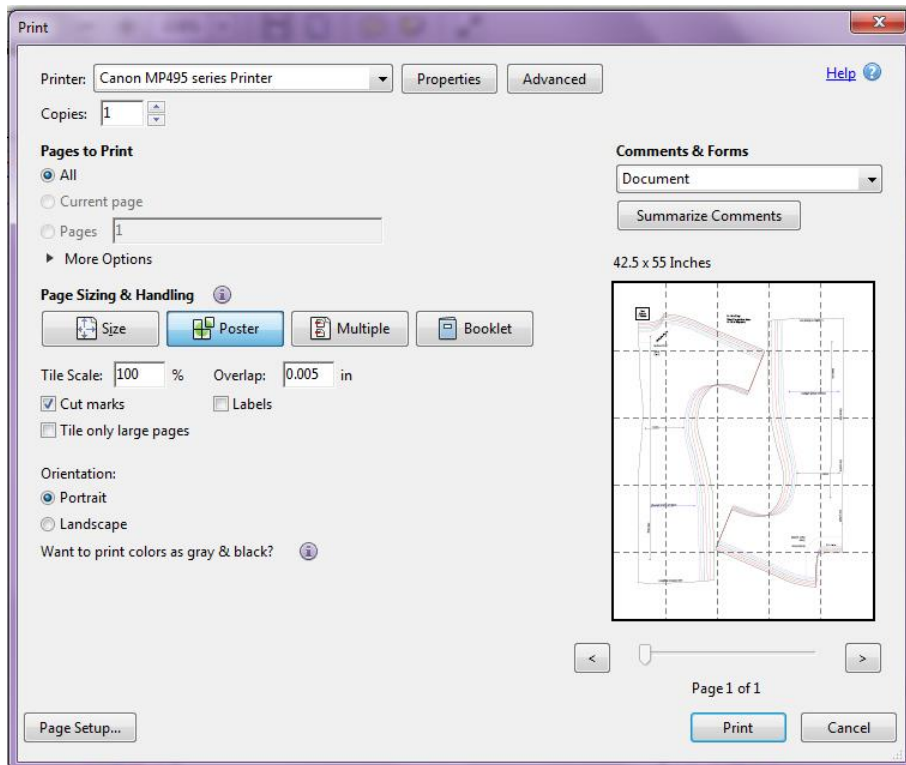
FREE SEWING PATTERN

So-Sew-Easy.com

To print your PDF pattern

Your pattern comes as one large sheet so to print it you will need to 'tile' the pattern over several printed sheets unless you have a large format printer. To do this, please make sure you are using the latest version of Adobe which includes the 'poster print' option. You can [download the latest version here](#) if you need to.

Open the PDF file in Adobe Reader, usually by double clicking. All pattern pieces are on the same large PDF sheet. Select File → Print and the print dialogue box opens. Under Page Sizing and Handling, select POSTER and see the image on the right split over several pages. Tile scale should be 100% and accept the default Overlap at 0.005 in. Click Page Setup bottom left and select your paper size – typically Letter or A4.



Select the 'cut marks' option to print additional marks on the edge of the paper that will help you line up your pattern accurately.

On the first piece at the top left is a test square. This box should measure 2 inches square. If yours is wildly different you will need to check your printer options to make sure the pages are not being resized. Some computer users have reported minor scaling issues printing PDF patterns using Windows 8. When making clothing, accuracy is necessary for fit, but a small variation isn't too important in a bag.

Use the guides on the corners of the sheets to match up the pattern pieces, folding under or cutting off any overlaps, tape together and cut out your pieces.

Skill level – Beginner.

This is a very simple pattern using simple turn and stitch techniques, plus neckline facings. Some experience of sewing with knit fabrics would be useful.

If you want to learn more about great techniques for sewing with knit fabrics, read the [So Sew Easy review](#) of the online Sewing with Knits Class.

Read through all of these instructions before starting your project and cutting your fabric.

Useful tutorials

You can find a range of useful sewing tutorials and videos at [So Sew Easy – tutorials page](#).

What size do I need?

The dress is made from a stretchy knit fabric and is intended to be a close fit on the body with plenty of ease in the bust and shoulders. The amount of stretch and drape in the fabric will alter the fit and feel of the dress so use this table as a guide only.

Size	Bust (in/cm)	Waist (in/cm)	Hips (in/cm)
1	31.5 / 80	26 / 66	34 / 86
2	32.5 / 83	27.5 / 70	35.5 / 90
3	34 / 86	29 / 74	37.5 / 95
4	36 / 91	31 / 79	40 / 101
5	38 / 96	33 / 84	42 / 107
6	40 / 101	35 / 89	44 / 112

If you fall in between sizes, you can also cut between the lines, and you can 'grade' from one size to another by, for example, cutting a size 4 in the bust curving out to a 5 at the hip if you need to.

Always test the fit using the paper pattern pieces, or an inexpensive test fabric before cutting your expensive fabric for this dress. If in doubt test the larger size and adjust for fitting at the side seams during construction.

Adjustments to length. The dress is designed to fit an average height. If you are taller or prefer a longer fit, you can simply add length at the

bottom of the pattern pieces. Do check length before cutting your fabric – you can't add length afterwards, but can always cut it off if it's too long.

Pattern pieces.

Dress front and dress back only. Front – cut 1 on the fold of the fabric. Back, cut 2 with fabric right sides together. Cut neckline facings to match by using the pattern pieces to cut a neckline and about 2 inches of shoulder seam, curving around as per the facings markings on the pattern.

Size 1 – inside line, pink

Size 2 – green line

Size 3 – blue line

Size 4 – red line

Size 5 – brown line

Size 6 – outer black line

Materials needed

Fabric – see recommendations below

Matching thread

[Stretch or ball point needle](#) for knit fabrics

Useful – serger or [Overcasting foot](#)

Optional – [Stretch Twin Needle](#)

Fabric requirements

Stretch fabrics with moderate stretch, that allow you to take a close-fitting dress on and off. In a soft, draping knit, the integral sleeves drape really nicely.

Bold stripes can look good too! Take care to match them on the side seams and back center for the best effect.

Assuming a fabric 60 inches wide, 2 yards of fabric should be sufficient for all sizes. More fabric will be needed for stripes or pattern matching.

Directions

Seam allowances are 5/8th inch (1.5cm) throughout unless stated otherwise.

Abbreviations used – RST – right sides together.

Stitches to use – if using a regular sewing machine, you may have a stretch stitch – refer to your sewing machine manual.

If not, then you can use a narrow zig-zag stitch – try a stitch length of 2.5 and a width of 1.0. Always test your intended stitches on a scrap of fabric before starting your project and test for stretch.

Trim, neaten and finish your seams as you go. You may use a serger, or trim and overcast, or zigzag, or simply trim and leave raw. Most knit fabrics do not fray so you may also choose to leave the inside edges unfinished. Always stop your stitching coming undone at each end of your seam by backstitching 2 or 3 stitches.

Let's start to sew !

Print and assemble your pattern. Check the size of the test square – see above. Cut out your pattern pieces.

Pre-wash and iron your fabric according to fabric care instructions.

Use your pattern pieces to cut your fabric. Remember to cut the front on the fold of the fabric. Cut neckline facings for front and back.

RST, match the center back seam. Pin and stitch. Do the same with the center back seam for the neckline facing.



Pin and stitch the back neckline facing to the back neckline curve, RST.



Trim the seam allowance down by half. Clip curves.



Pin and stitch the front neckline facing to the dress front, RST. Trim the seam allowance down by half.



Clip curves for both front and back facing seam allowances, close to the stitching line.

RST, pin and stitch shoulder and top of sleeve seam. Open out the facing and sew this too. (Optional – in very stretchy knits you may choose to stabilize the shoulder seam with a clear elastic or stay tape.)



Open out neckline facing away from garment. Press seam allowances towards the facing and with right sides up, understitch the seam allowances to the facing 1/8th inch from the neckline seam. (See this [tutorial on understitching](#).)



Press the neckline facing to the inside of the garment. Pin in place and then evenly top stitch from the right side of the neckline, 1/2 inch from the edge.



Trim off excess facing taking care not to snip into garment fabric. Press with plenty of steam.



Pin and stitch dress side seams from bottom of sleeve to bottom of hemline. Try on the dress for fit and make any adjustments necessary.

Turn under $\frac{1}{2}$ inch at the end of each sleeve and stitch. You may use a twin needle or a simple stretch or zig-zag stitch. (Tutorial on [how to hem knits with a twin needle](#).)

Turn up the hemline to the required length and finish. A one inch hem depth is recommended.



Wear your finished dress, love it and make another!



Thank you for downloading this **Wear Everywhere Dress** pattern and tutorial. I hope you enjoyed making this project and remember that I love to share your creations at So Sew Easy so drop me an email with a photo at

deby@so-sew-easy.com

or upload your completed projects to the pattern page on Craftsy.

You might enjoy my other tutorials and sewing patterns at So Sew Easy, including:

[Wrap Dress](#)

[Twist Front Top](#)

[Easy Summer Dress](#)

[Summer Drape Top](#)

[Custom Fit Skirt](#)

[Sew A Skirt beginner tutorial series](#)

[Double Layer Chiffon/Lace Blouse](#)

[30 Minutes Easy Skirt](#)

[Cheeky Panties](#)

[Lounge about leggings](#)

[Boxy Bag](#)

[Super Simple Wallet](#)

[Slouchy Sweater](#)

[One shoulder party dress](#)

[Classic Straight Leg Knit Pants](#)

[Gathered front top](#)

For the latest list, pop on over to the [Tutorials Page](#) or my [designer page at Craftsy](#).

This pattern graphic, the photos and the instructions are copy right Deby Coles at So Sew Easy. Please do not copy, publish, sell, redistribute or alter them in any way. Please don't print and give to your friends, or send it to anyone by email. Please do not rebrand this work as your own and sell or give it away, even if altered. This is intended for your personal use. If you would like to recommend these instructions, please pass on the original download link at So Sew Easy. Thank you for your understanding.

Usage – you ARE allowed to use this pattern to make things to sell on a small handmade basis, such as for craft fairs and for your Etsy shop. However it may not be used for larger scale commercial purposes without a commercial licence.