



Boho Chic Tunic

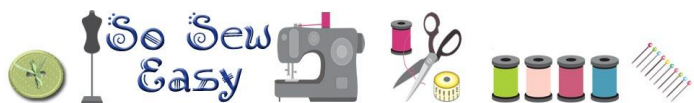
The first time I made this Boho Chic Tunic pattern, I had just turned 15 years old. Originally a dress, I decided to remake and share it with you. For me, it represents freedom which is why I wanted you to have it.

I have made the tunic a few times here and there, but I still remember the first time I wore it. I felt free! This is a super easy boho chic tunic, I recommend this project for a first time sewer, young or mature, it doesn't really matter.

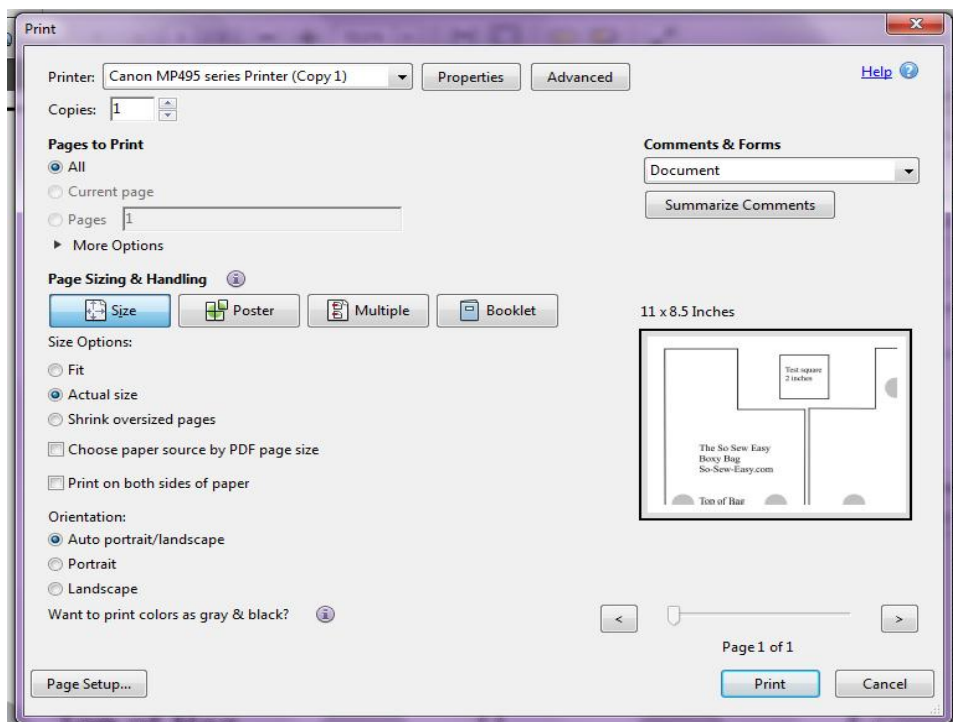
[So what is Boho Chic anyway?](#) Please check out our background article from earlier this week.

You can read more about this pattern over at So Sew Easy [HERE.](#)

Find more great sewing patterns at So Sew Easy – <http://so-sew-easy.com>



To print your PDF pattern



the reverse of your fabric to cut.

Help printing and assembling your pattern

You can find helpful tutorials on how to download, print and assemble PDF sewing patterns here:

[How to download and print a PDF sewing pattern](#)

[How to print and assemble a PDF sewing pattern](#)



Your pattern pieces come at the end of these instructions. For accurate printing, please make sure you are using the latest version of Adobe Reader. You can [download the latest version here](#) if you need to.

Select File → Print and the print dialogue box opens. Under Page Sizing and Handling, select ACTUAL SIZE . Check the preview in the right hand side illustration. Select the page numbers you want to print. You can print the whole document, or just the pattern pieces.

On the edge of the top left page is a box you can use to test your printing. This box should measure 2 inches square. If yours is wildly different you will need to check your printer options to make sure the pages are not being resized.

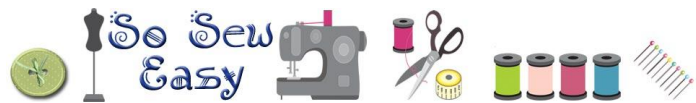
Use the grey guides on the overlap of the sheets to match up the pattern pieces, folding under or cutting off any overlaps, tape together and cut out your pattern pieces.

Also note that you will need to cut two straps at 4 inches by 22 inches, for which no pattern piece is supplied – it's just a rectangle! You can draw the straps on

Find more great sewing patterns at So Sew Easy – <http://so-sew-easy.com>

Materials

- 2 to 3 yards of [Japanese lawn](#), [voile](#) or silk
- 3/8" to [1/4" elastic](#), enough to go around the shoulders and the sleeves
- thread
- 1 3/4" [lace](#) for the bottom
- 2 yards of [cotton cord](#) or a belt
- sewing machine
- serger (optional)



Find more great sewing patterns at So Sew Easy – <http://so-sew-easy.com>

Thank you for downloading this pattern and tutorial. I hope you enjoyed making this project and remember that I love to see what you made so do upload your completed projects to the pattern page on Craftsy.

Keep up with all the latest news and sewing projects at [So Sew Easy](#).

We also have a really great sewing chat group where you can ask questions, share your completed projects, and get 24 hr sewing inspiration. It's not just for So Sew Easy projects – you can chat about all sewing there, whether a newbie just starting out, or an advanced and experienced sewer, there's something for everyone in the sewing chat group. Join us here.

[SEWING CHAT GROUP](#)

For the latest list of both free and paid patterns available, pop on over to [my designer page at Craftsy](#).

This pattern graphic, the photos and the instructions are copy right Mayra Cecilia Morales at So Sew Easy. Please do not copy, publish, sell, redistribute or alter them in any way. Please don't print and give to your friends, or send it to anyone by email. Please do not rebrand this work as your own and sell or give it away, even if altered. This is intended for your personal use. If you would like to recommend these instructions, please pass on the original download link at So Sew Easy. Thank you for your understanding.

Usage – you ARE allowed to use this pattern to make things to sell on a small handmade basis, such as for craft fairs and for your Etsy shop. However it may not be used for larger scale commercial purposes without a commercial licence.

Find more great sewing patterns at So Sew Easy – <http://so-sew-easy.com>

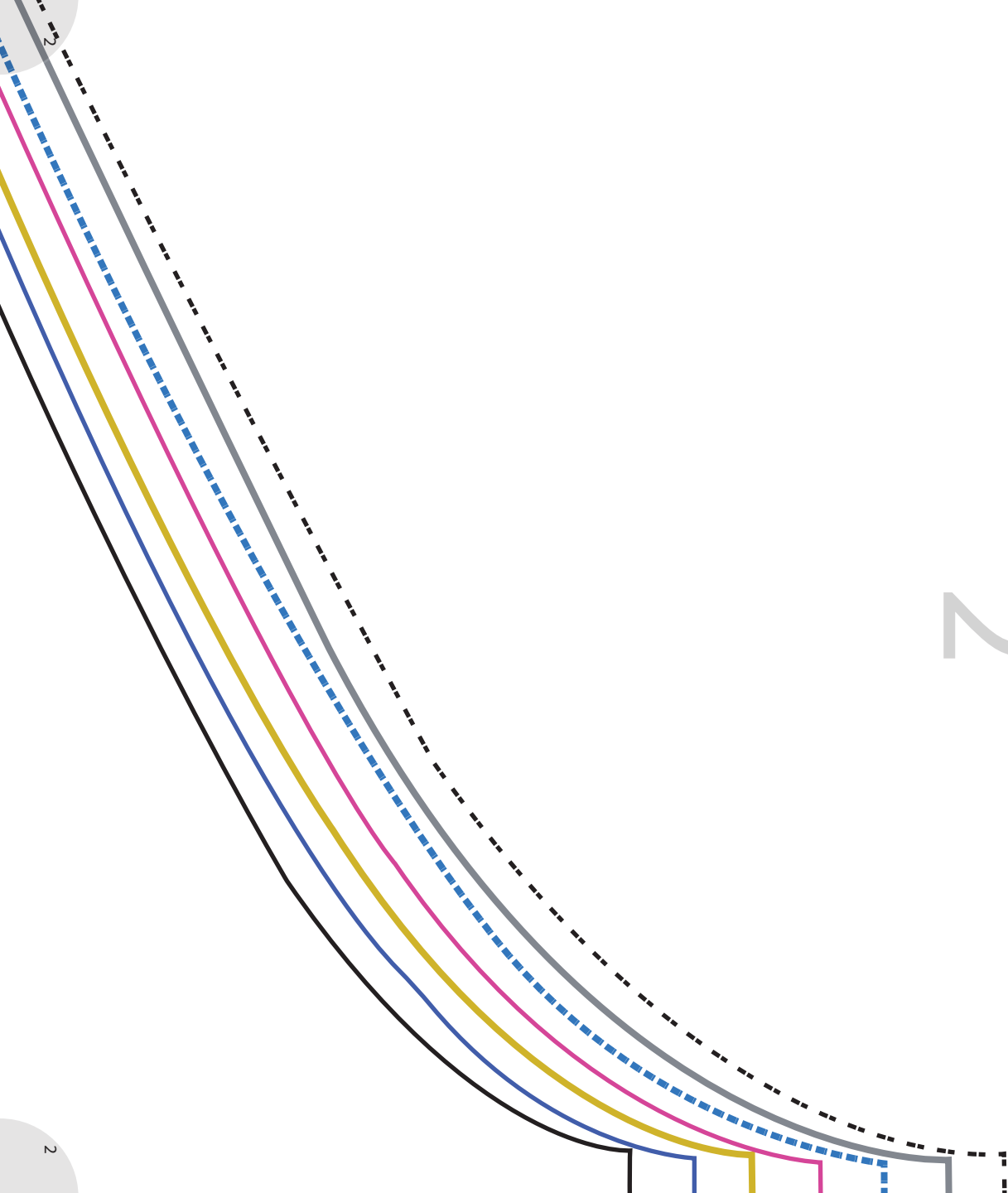


2" x 2" Square Test

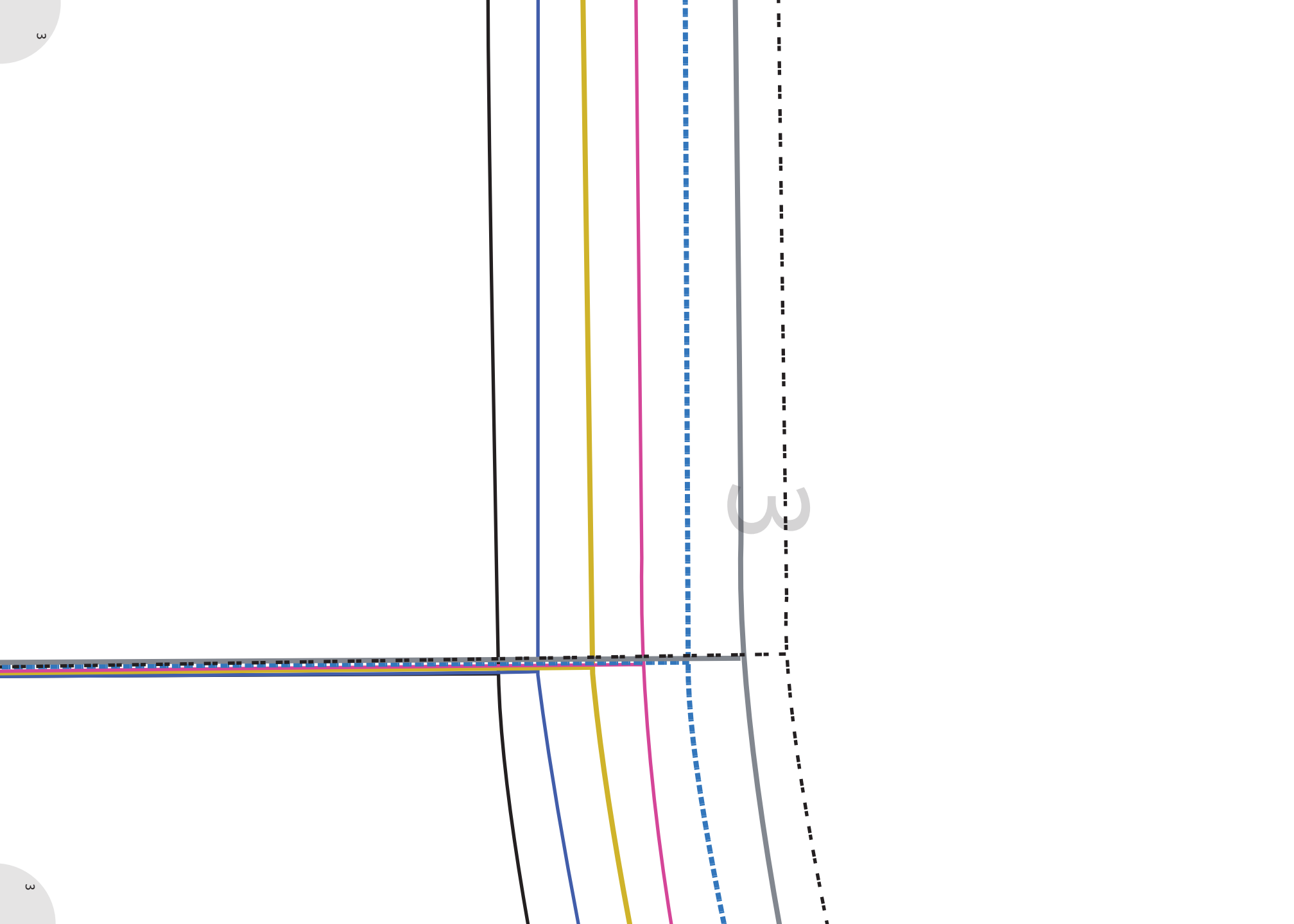
Copyright 2016@

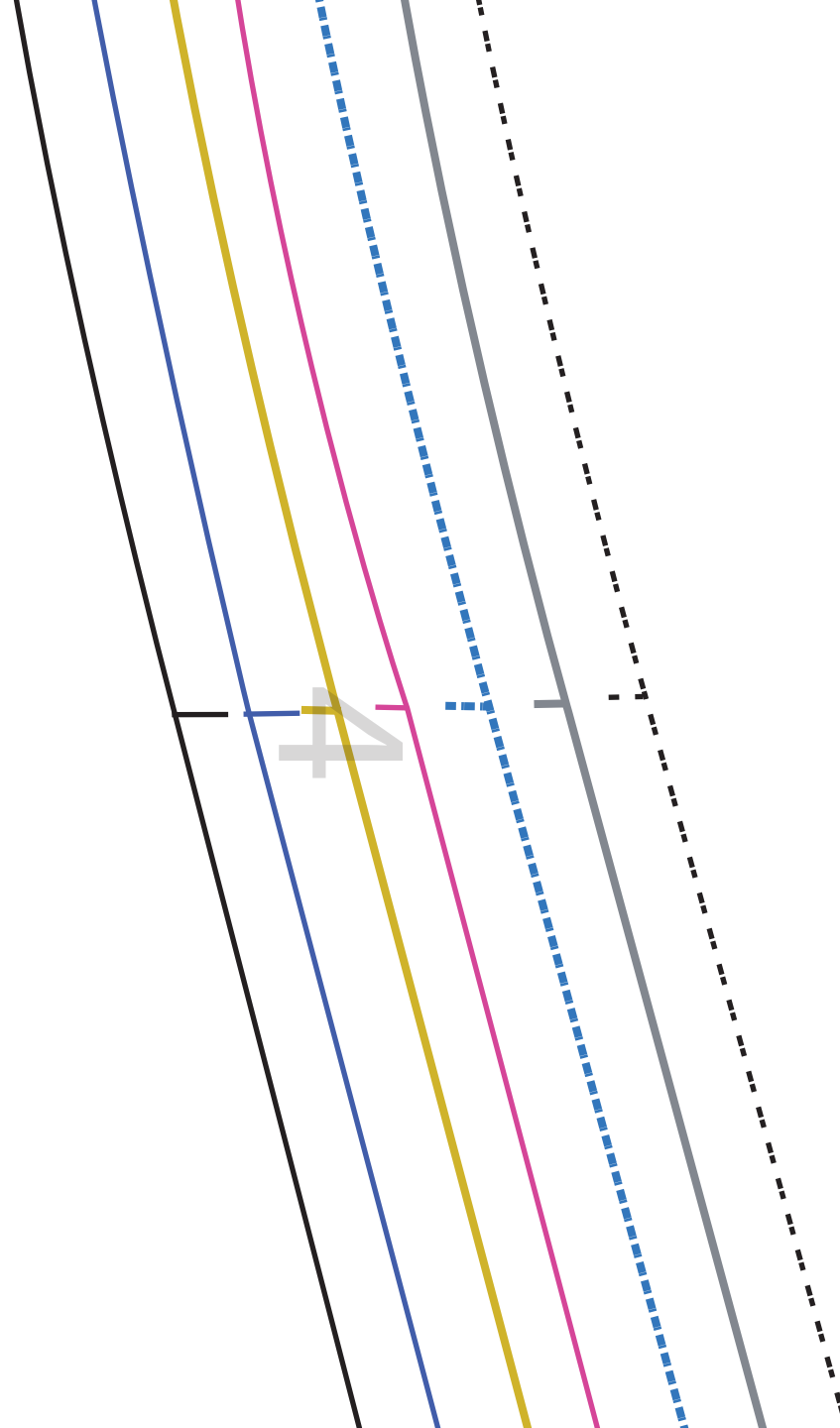
So-Sew-Easy.com

1



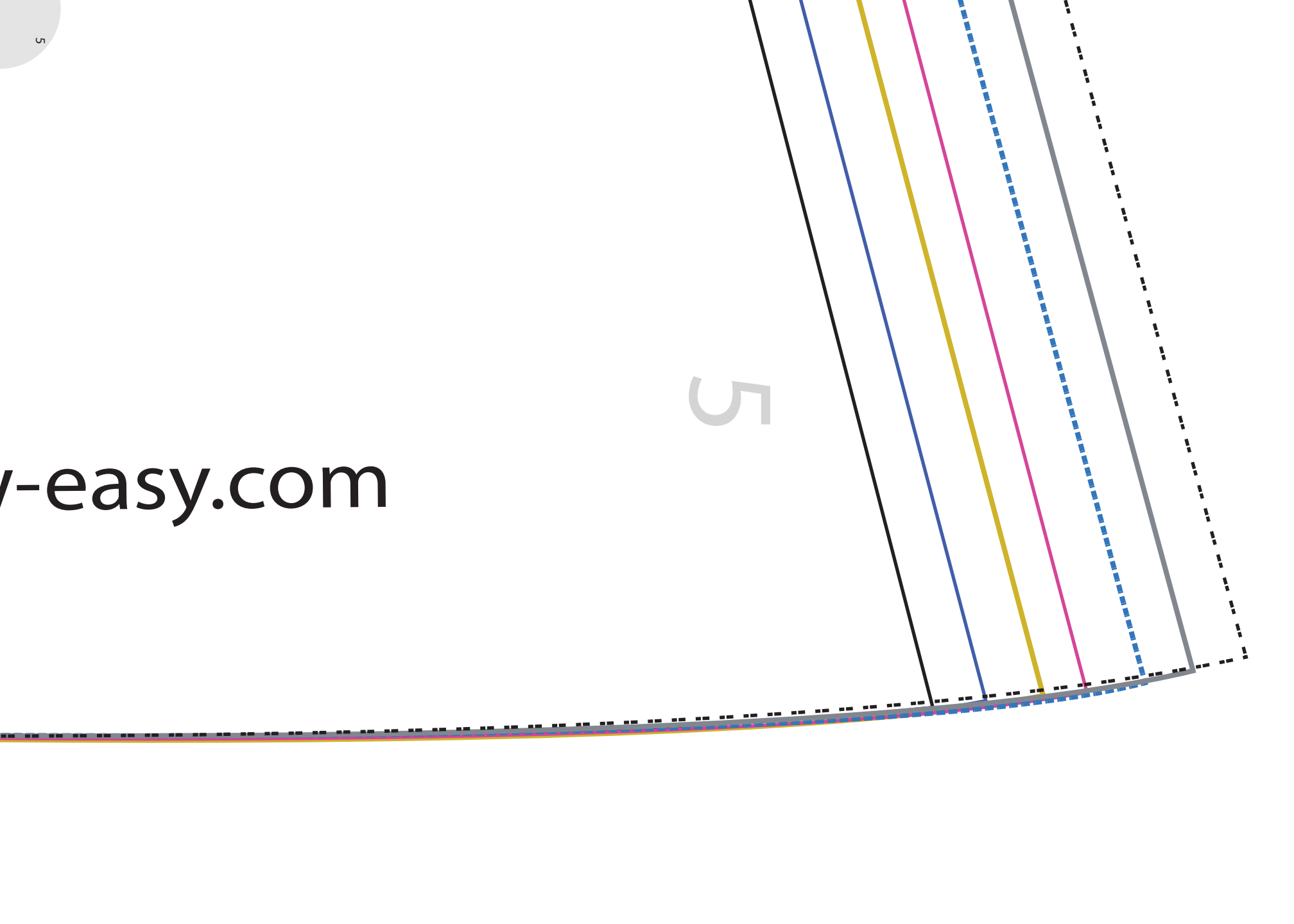
2

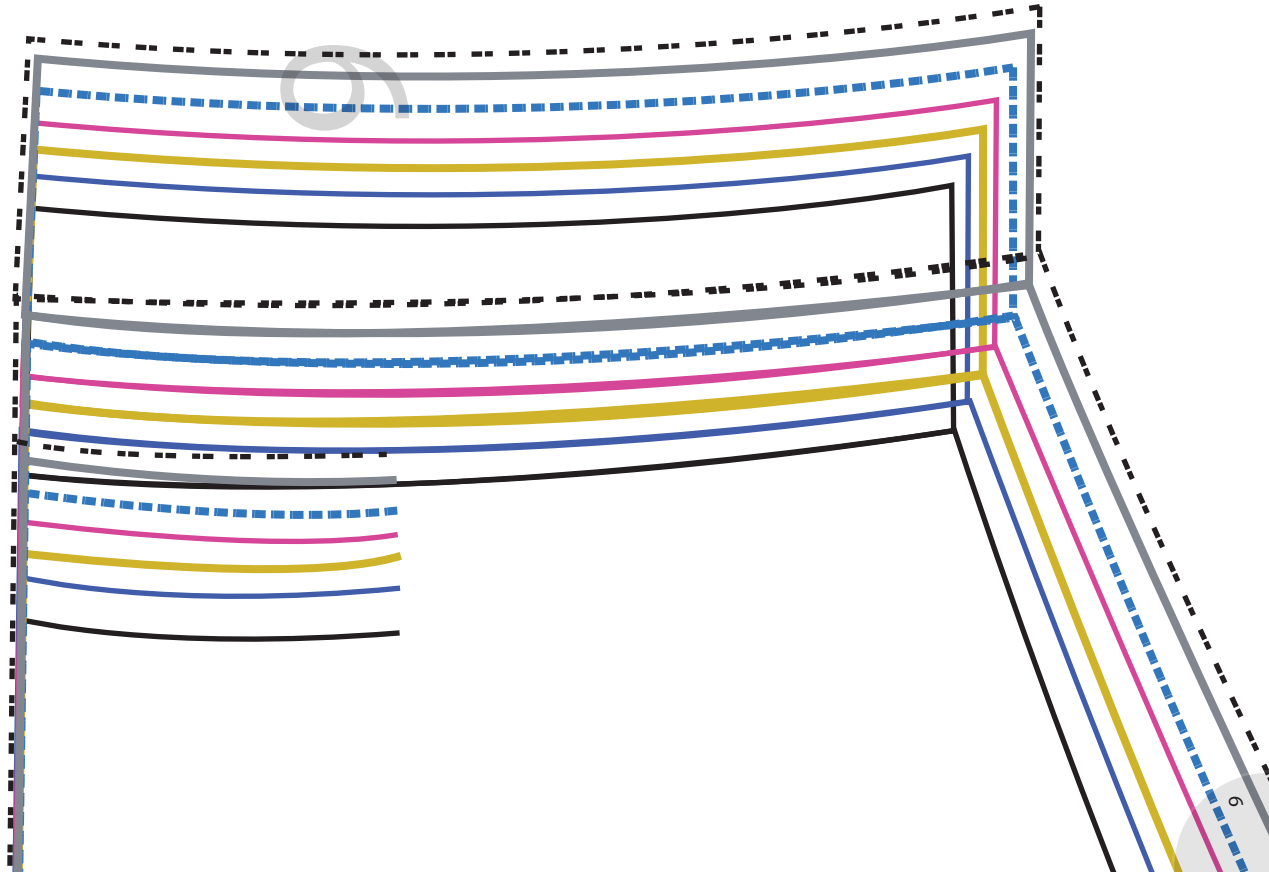
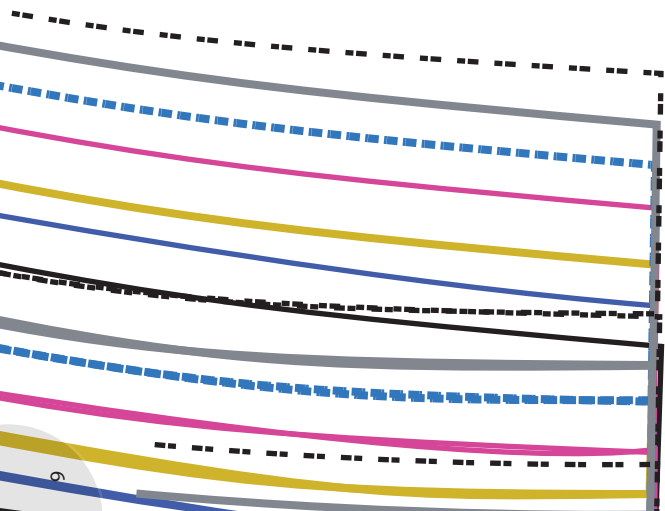


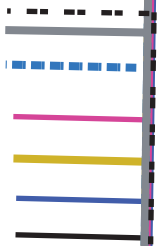
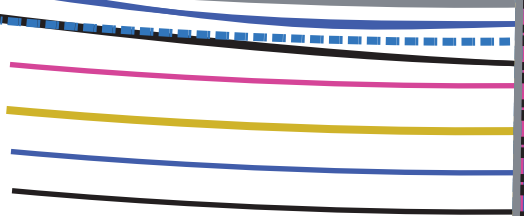


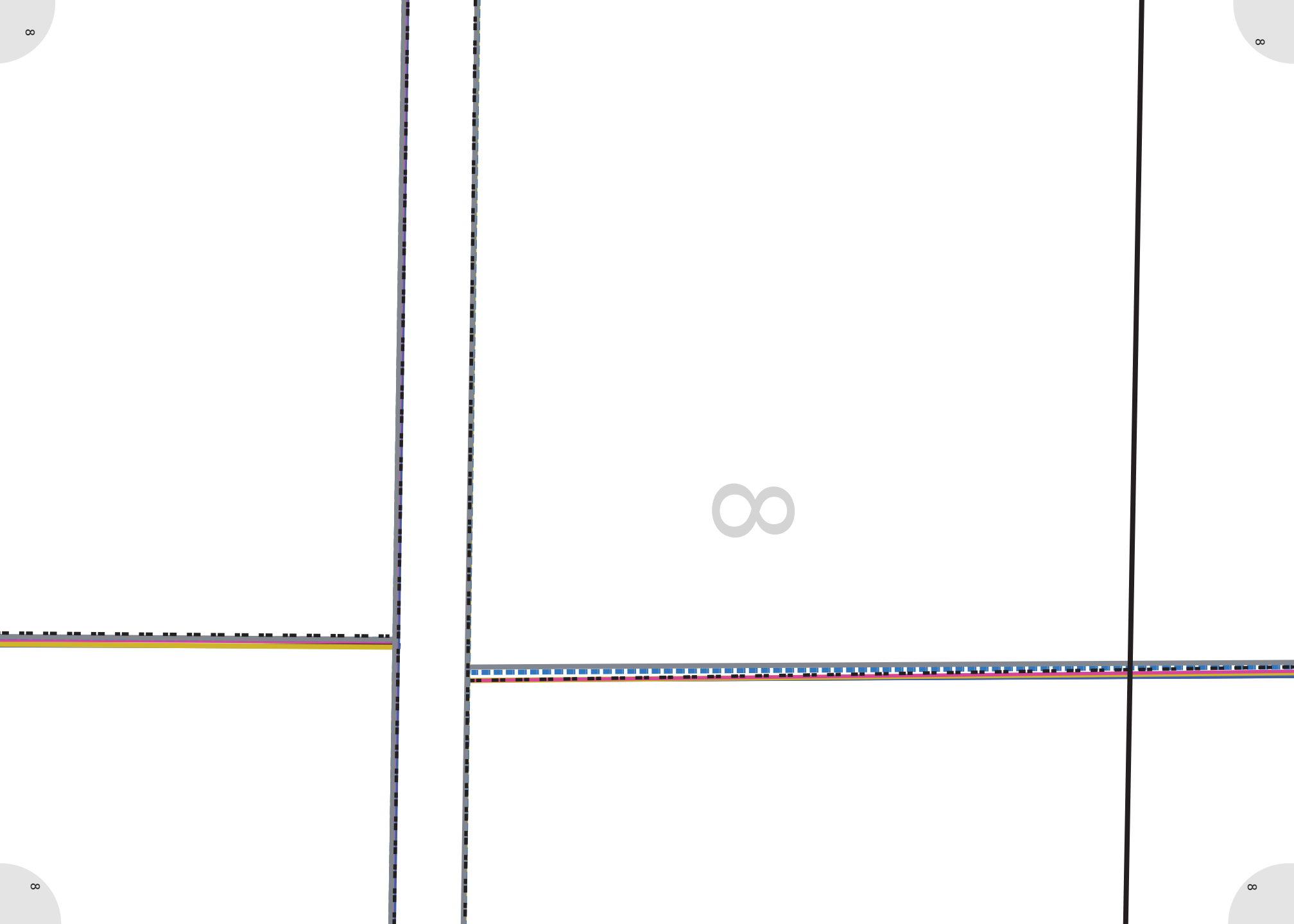
v-easy.com

5









∞

Size 8



Size 10



Size 12



Size 14



Size 16



Size 18



Size 20

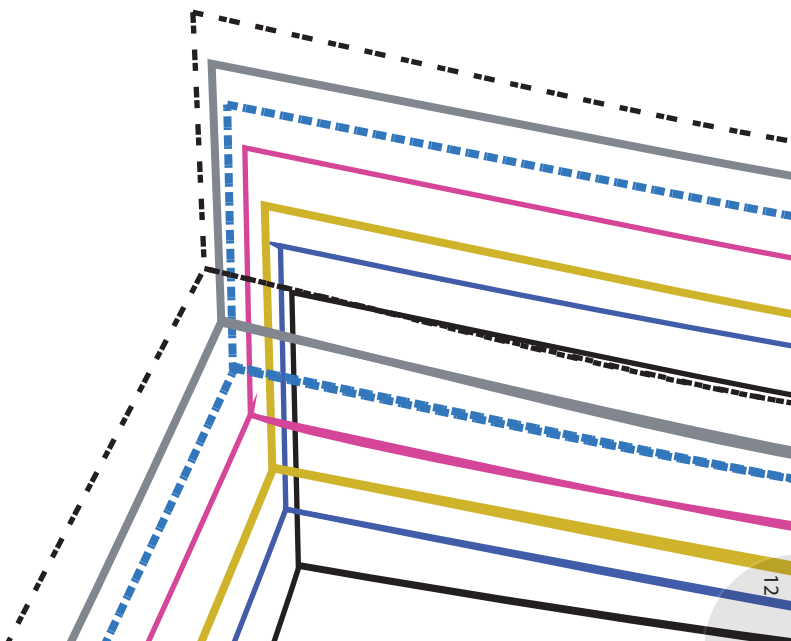


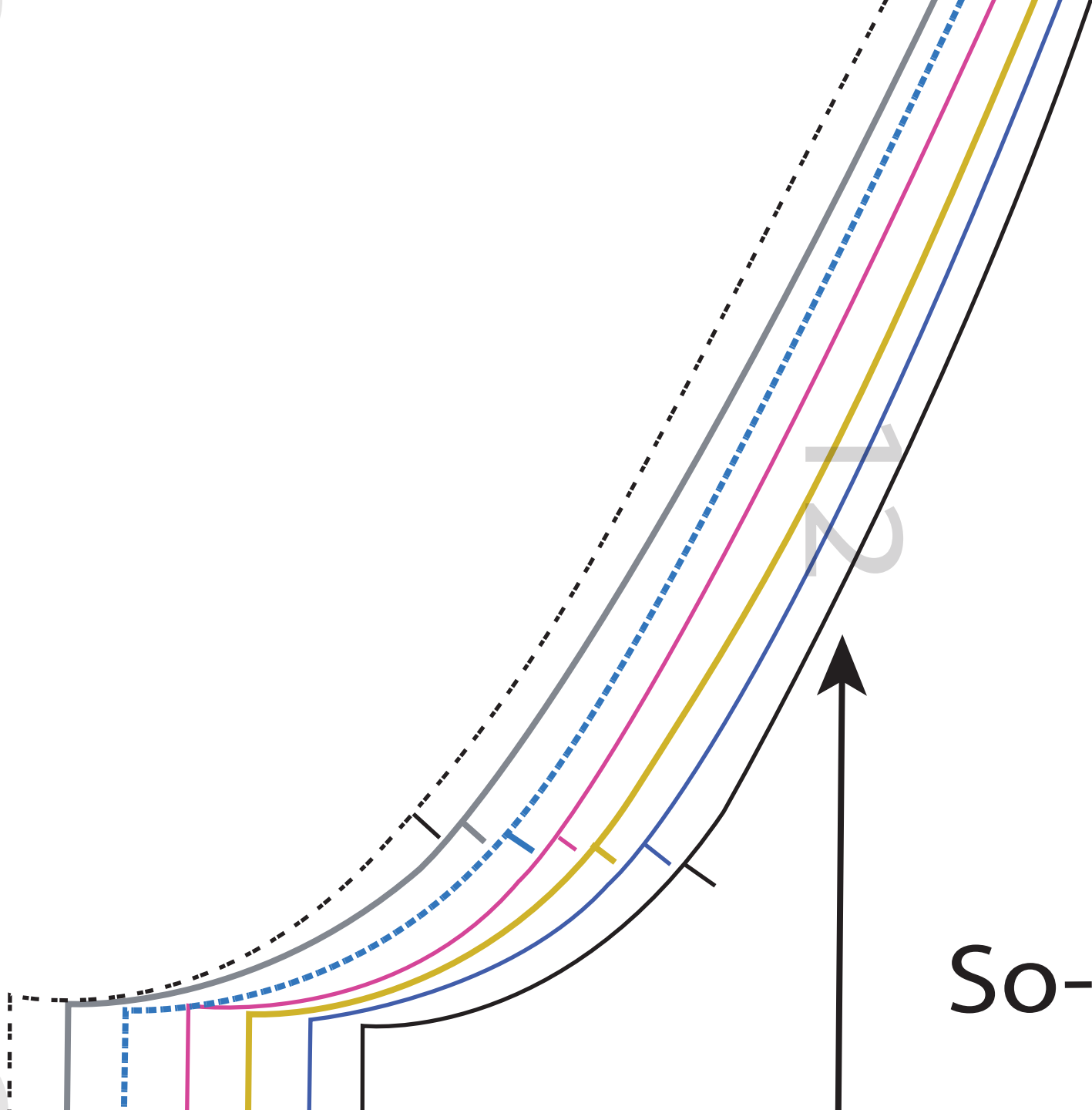


10

So-Sew

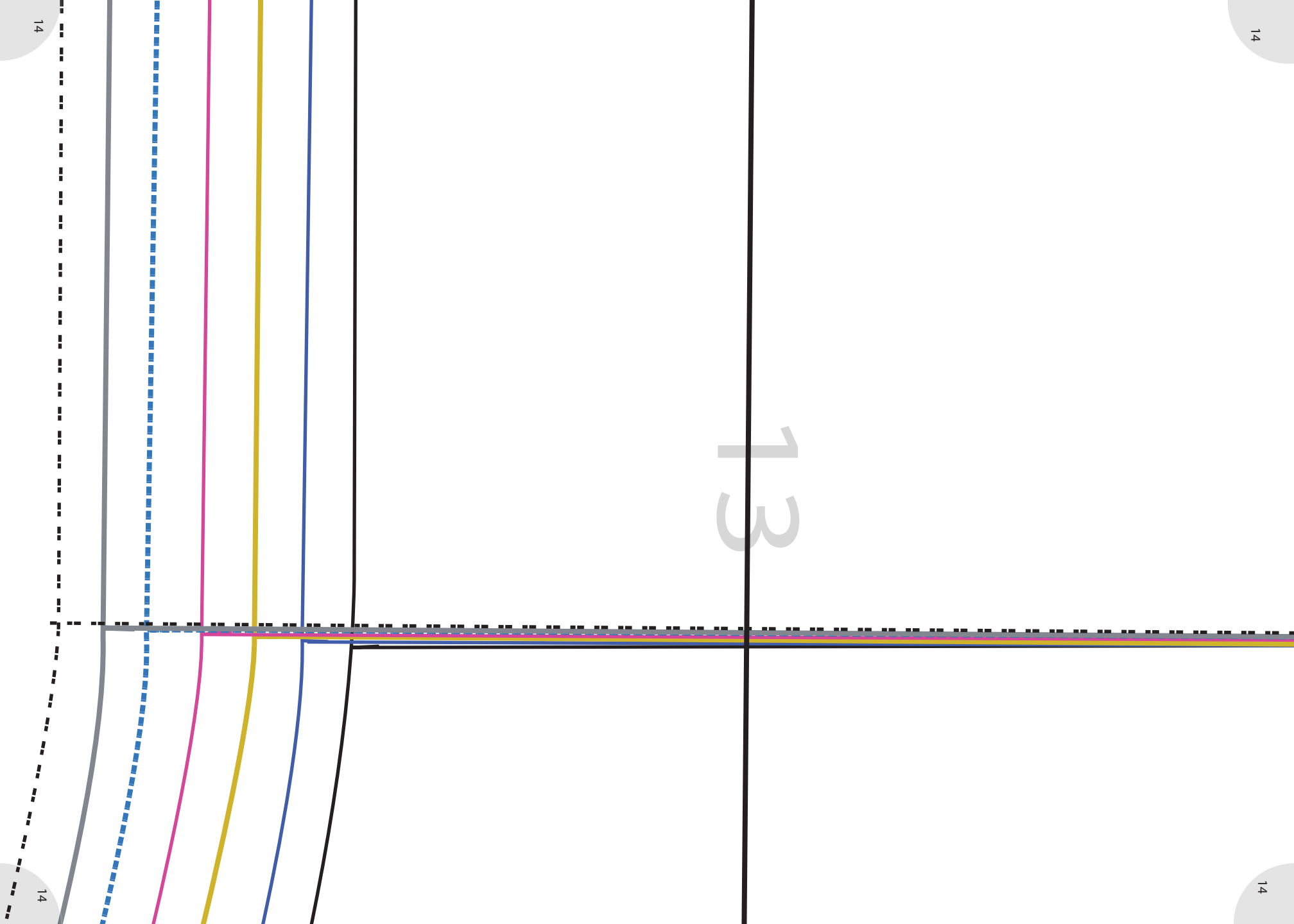
11

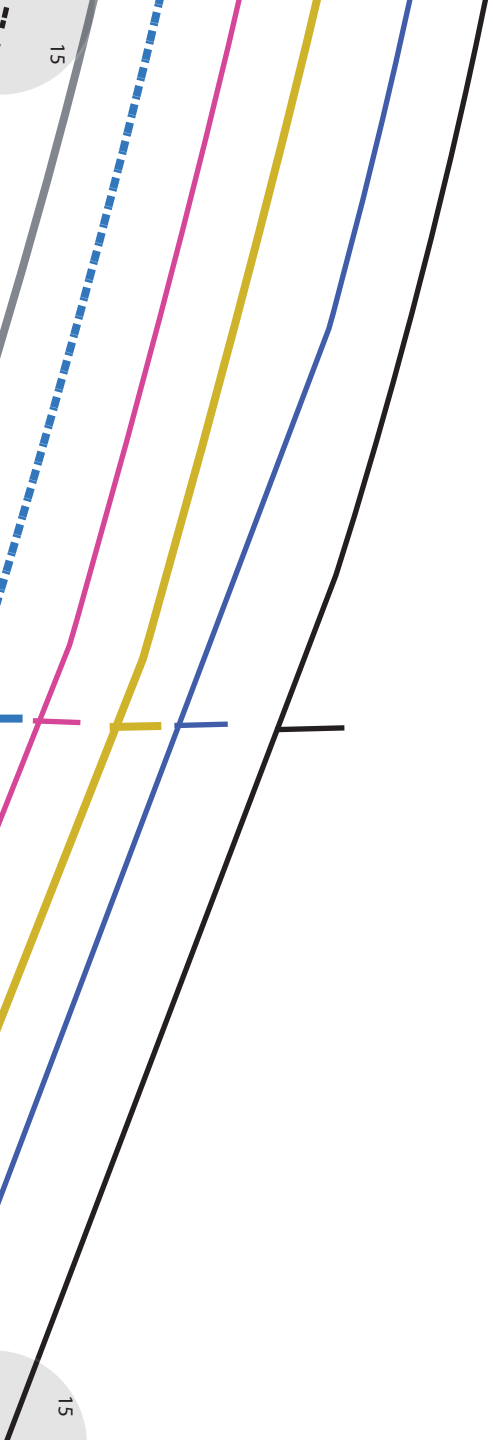




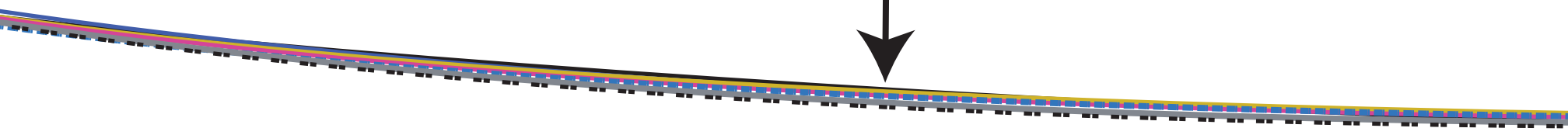
So-Sew-easy

13





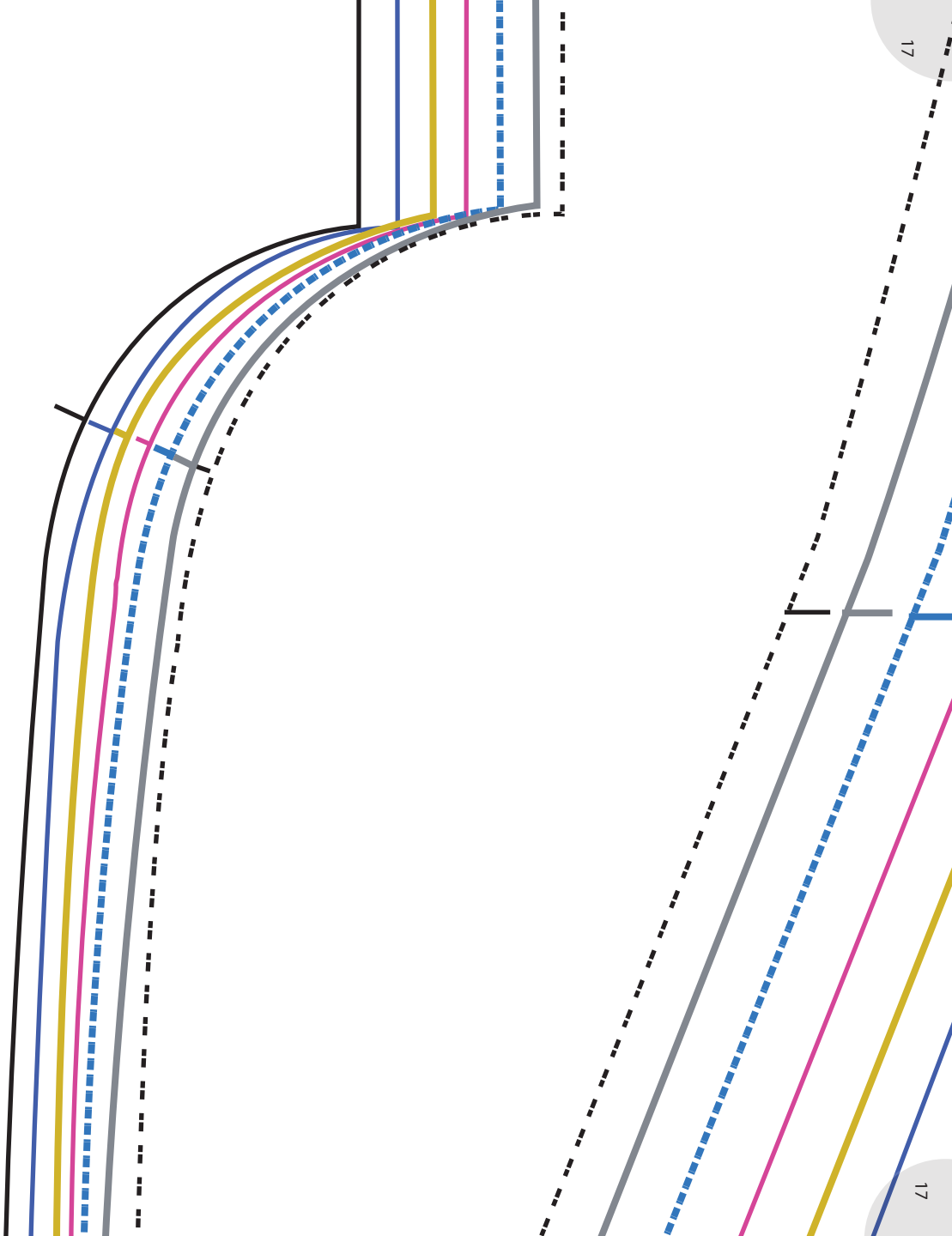
14

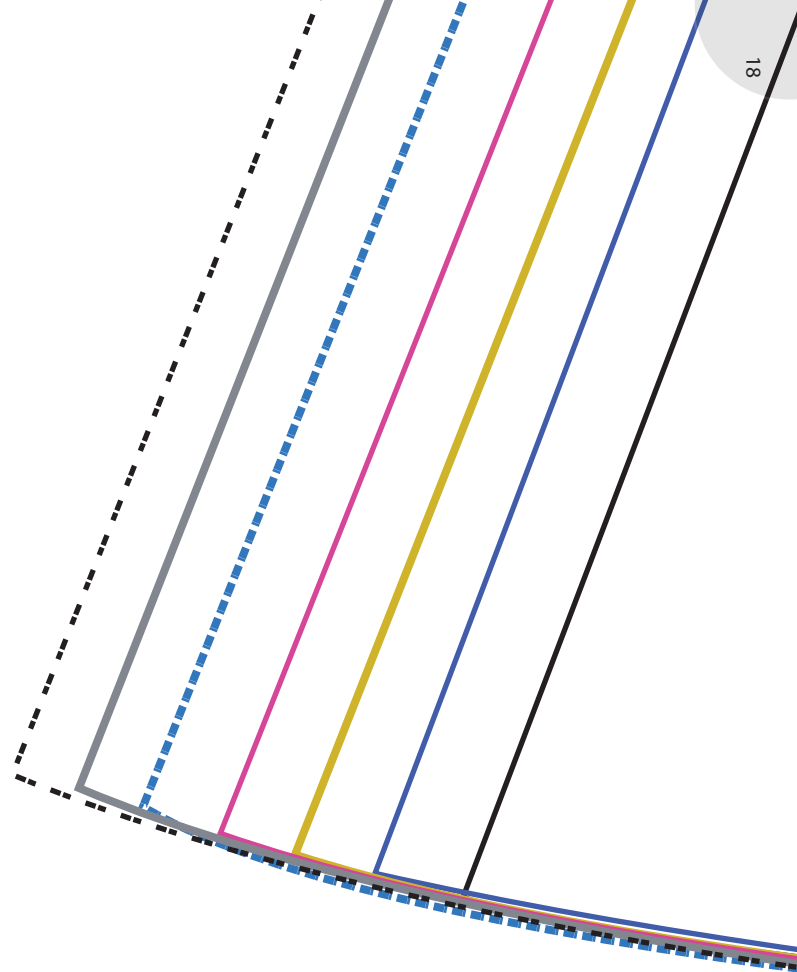
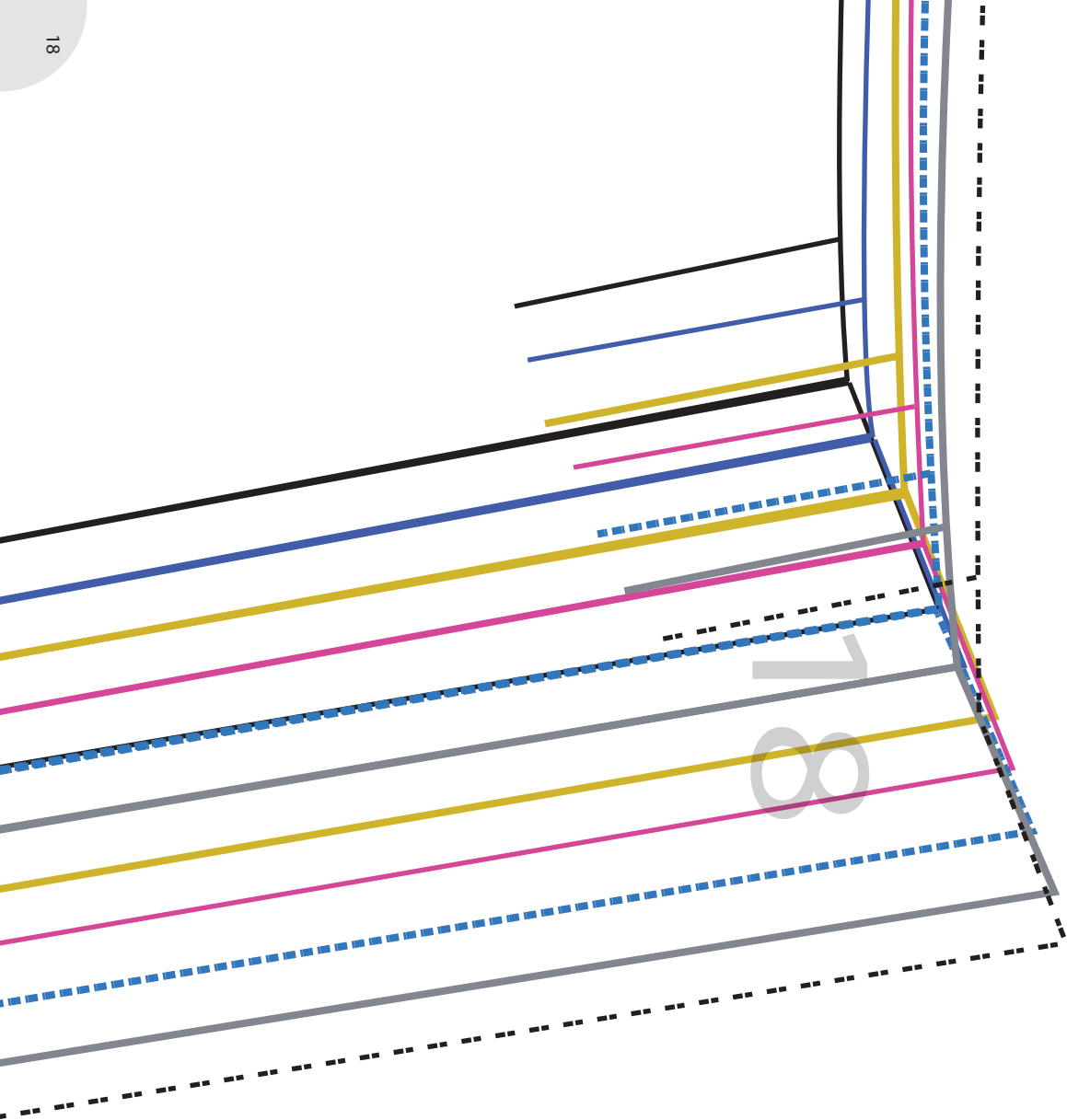


15

So-Sew-Easy.com

16





19



20

