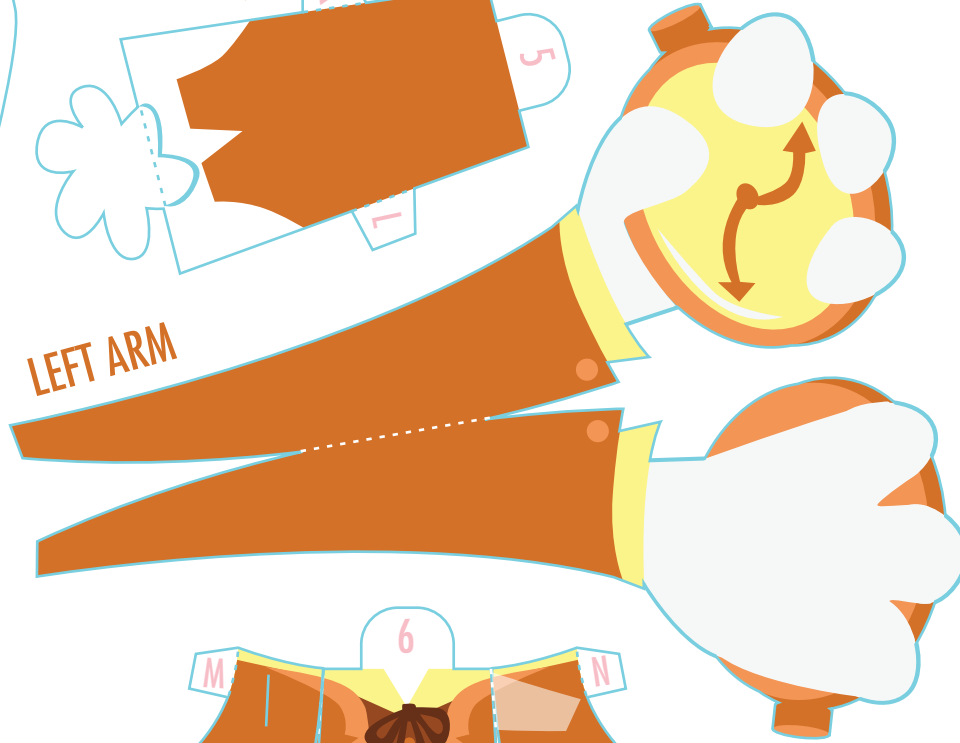
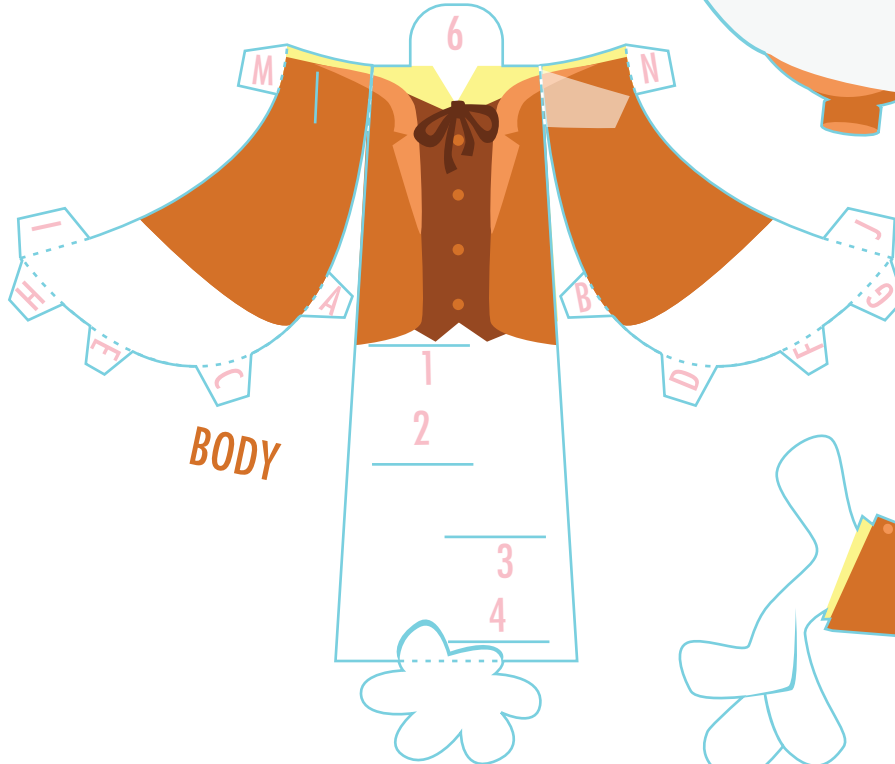
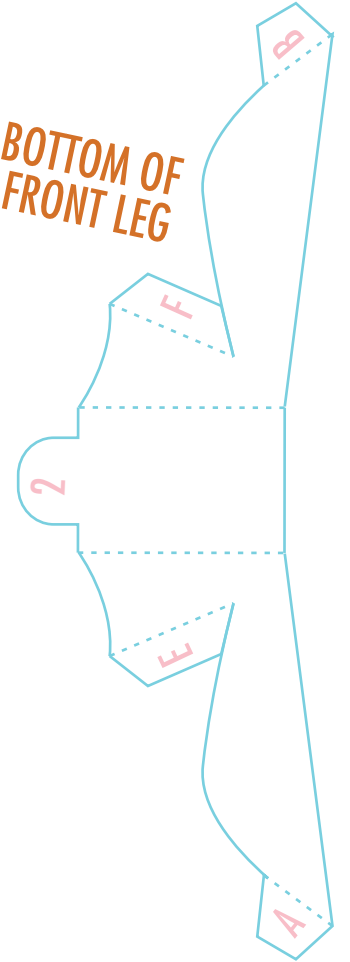


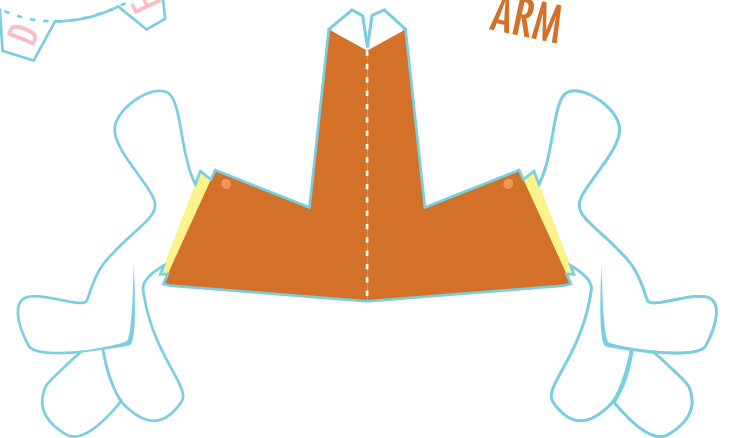
LEFT ARM



BOTTOM OF FRONT LEG



RIGHT ARM





LATE!

A Matt Hawkins papertoy for Canteen's
Two Days Slow: an Alice in Wonderland Group Show

ASSEMBLY INSTRUCTIONS

Cut out pieces carefully on solid lines as needed and fold crisply on dashed fold lines. Use a thin layer of white glue for gluing.

1. Drink me, Eat me.
2. Be sure to cut solid line on tooth and fold tooth down.
3. Glue tab A-L on BACK LEG to form leg.
4. Glue TOP OF FRONT LEG to BOTTOM OF FRONT LEG at tabs A and B behind toes. Glue C-F to finish forming leg.
5. Glue the front of the tail on BODY to the back of the tail on BACK.
6. Insert tabs 1-4 on LEGS into corresponding slots on BODY and glue them inside.
7. Glue tabs A-N to form BODY.
8. Glue RIGHT ARM and LEFT front to back. Insert white tabs on RIGHT ARM in slot on BODY and glue inside. Glue RIGHT ARM to the light space on the right side of BODY.
9. Glue tab A on BOTTOM OF HEAD to TOP OF HEAD right below the ears. Glue tabs B-M to form head.
10. Insert tabs 5 and 6 on BODY into corresponding slots on HEAD.
11. Check out Two Days Slow: an Alice in Wonderland Group Show at Canteen March 4-28 2010!