


Arrangement

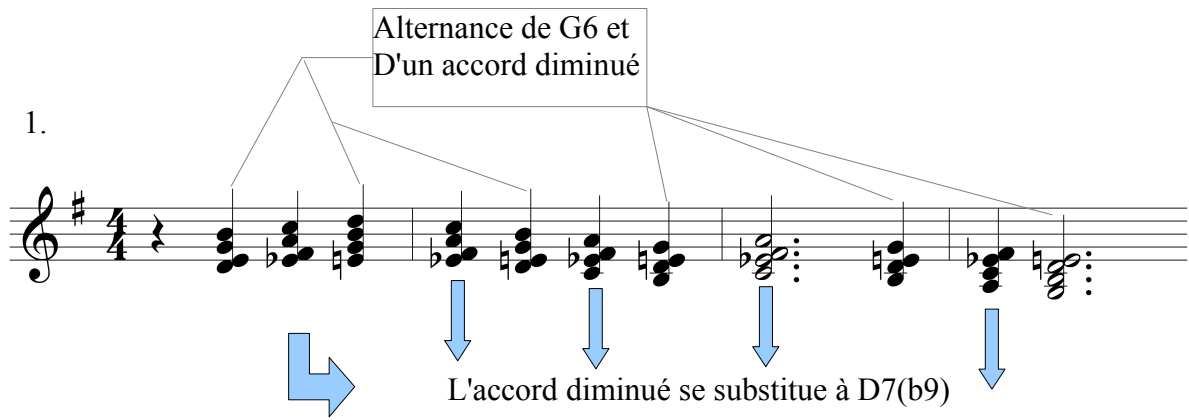
Harmoniser les 4 premières mesures de « I'll remember april »

G6



1.

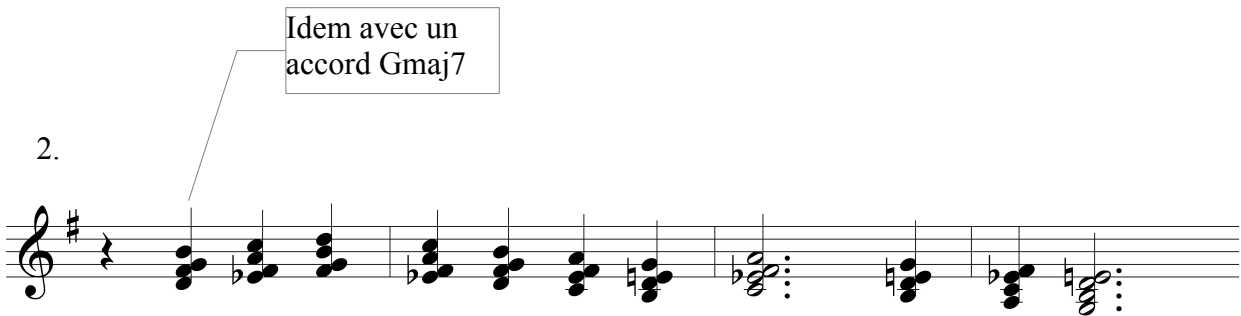
Alternance de G6 et D'un accord diminué



L'accord diminué se substitue à D7(b9)

2.

Idem avec un accord Gmaj7



3.

Parallélisme diatonique :
G6-Am7-Bm7-Am7-Bm7-Am7-G6

This musical staff shows a sequence of chords in G major: G6, Am7, Bm7, Am7, Bm7, Am7, and G6. The notes are written in a treble clef with a key signature of one sharp (F#). The chords are connected by a melodic line that moves stepwise between the roots of the chords. A box below the staff contains the text 'Parallélisme diatonique : G6-Am7-Bm7-Am7-Bm7-Am7-G6' with lines pointing to the corresponding chords on the staff.

4.

Idem en position drop 2

This musical staff shows the same sequence of chords as staff 3, but with a 'drop 2' voicing. The notes are written in a treble clef with a key signature of one sharp (F#). A box below the staff contains the text 'Idem en position drop 2' with a line pointing to the first chord.

5.

Parrallélisme diatonique

Accord diminué sur les notes d'approches

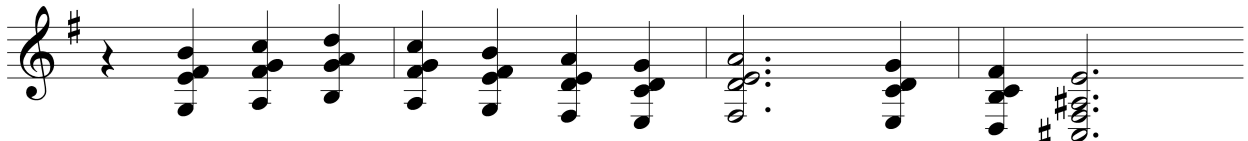
This musical staff shows a sequence of chords in G major: G6, Am7, Bm7, Am7, Bm7, Am7, and G6. The notes are written in a treble clef with a key signature of one sharp (F#). A box below the staff contains the text 'Parrallélisme diatonique' with a line pointing to the first chord. Another box below the staff contains the text 'Accord diminué sur les notes d'approches' with a line pointing to the Bm7 chord.

6.

Accords en 4te

This musical staff shows the same sequence of chords as staff 3, but with a 'fourth voicing'. The notes are written in a treble clef with a key signature of one sharp (F#). A box below the staff contains the text 'Accords en 4te' with lines pointing to the first six chords.

7.



Parallélisme diatonique d'accords avec une sixte qui remplace la quinte.
Gmaj7(add 6)-Am7(add 6)
Bm7(add b6)-Am7(add 6)
G(add6)-F#m7(add b6)
Em7(add b6)

F#7 (VII7)

8.



F7 (bVII7)
 S.D. mineure

B7=Gmaj9(#5)

Cm6=S.D. mineure

9.



Cm7-D(b9)
 IVm-V7

Parallélisme chromatique
 Cm7-Bm7

Parallélisme chr.
 G7-F#(b9)=Gdim(maj7)

Accord appoggiatural du I (Gdim7M)

10.



G(add9)-Adim(add b9)

Parallélisme chr.
Abmaj7-Gmaj7-FMaj7

Structure intervallique
(2nde,4te,3ce)
en Parallélisme diatonique
(Lydien)

11.



Drop 2

Close voicing

Structure intervallique
(4te,4te,3ce) en parallélisme
chromatique.
G(add9)-Ab(add9)-Bb(add9)

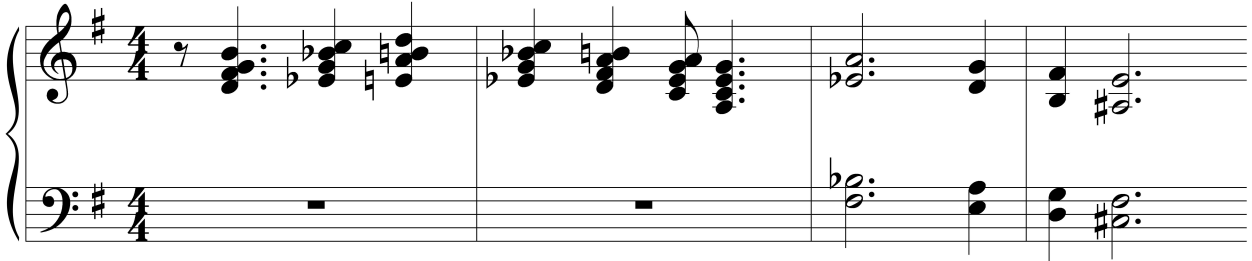
Parallélisme chr.
Abmaj7-Gmaj7
Fmaj7-Ebmaj7

Structure
intervallique
en parallélisme
diatonique.
Gmaj13-G6/9
(B7sus-A7sus)

Appoggiature d'accord
du 1er degré (Ebm/G)

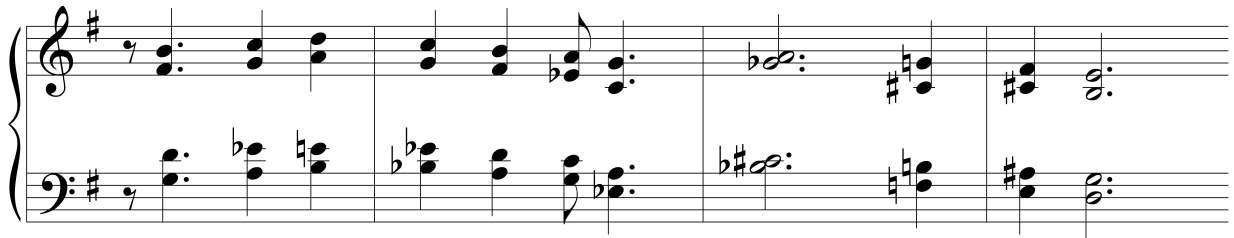
- Analysez les versions suivantes

12.



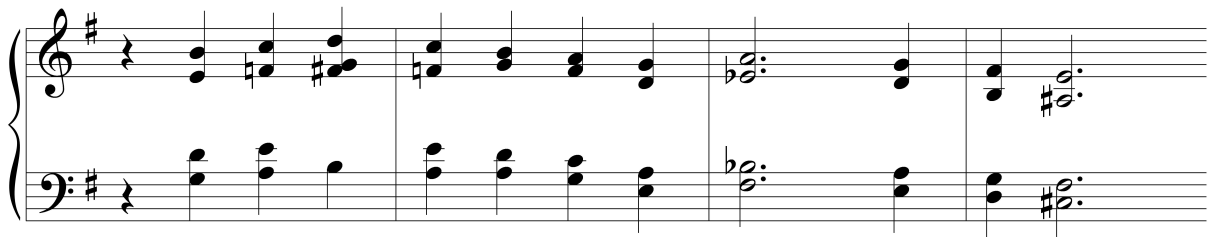
Musical score for exercise 12, featuring a grand staff with treble and bass clefs. The key signature is one sharp (F#) and the time signature is 4/4. The score consists of four measures. The first measure has a whole rest in the bass clef and a complex chordal structure in the treble clef. The second measure continues with similar chordal structures. The third and fourth measures show a transition to a simpler chordal structure in both hands.

13.



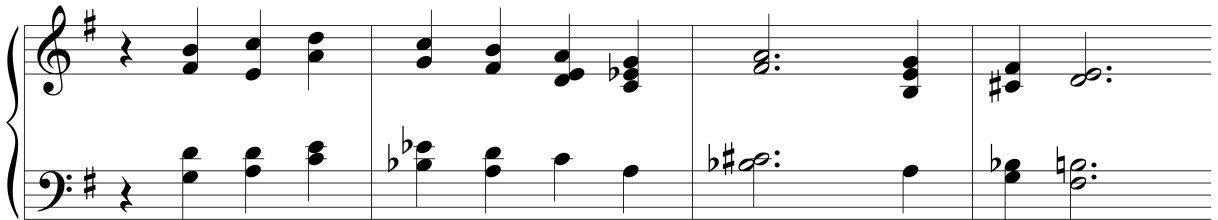
Musical score for exercise 13, featuring a grand staff with treble and bass clefs. The key signature is one sharp (F#) and the time signature is 4/4. The score consists of four measures. The first measure has a whole rest in the bass clef and a complex chordal structure in the treble clef. The second measure continues with similar chordal structures. The third and fourth measures show a transition to a simpler chordal structure in both hands.

14.



Musical score for exercise 14, featuring a grand staff with treble and bass clefs. The key signature is one sharp (F#) and the time signature is 4/4. The score consists of four measures. The first measure has a whole rest in the bass clef and a complex chordal structure in the treble clef. The second measure continues with similar chordal structures. The third and fourth measures show a transition to a simpler chordal structure in both hands.

15.



Musical score for exercise 15, featuring a grand staff with treble and bass clefs. The key signature is one sharp (F#) and the time signature is 4/4. The score consists of four measures. The first measure has a whole rest in the bass clef and a complex chordal structure in the treble clef. The second measure continues with similar chordal structures. The third and fourth measures show a transition to a simpler chordal structure in both hands.