

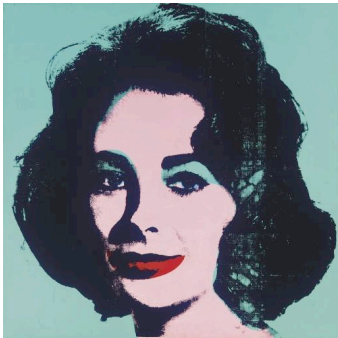
POP ART

Main Entry:

Pop Art (Merriam-Webster Dictionary):

Art in which commonplace objects (as road signs, hamburgers, comic strips, or soup cans) are used as subject matter and are often physically incorporated in the work.

1. Read the passage and underline key words linked to Pop Art



Pop Art is a visual arts movement of the 50s and 60s in the USA and Britain. It was born in New York and London, the new art centres of the western world.

The images of Pop Art (a short form for Popular Art) came from mass culture and ordinary objects from everyday life. Artists duplicated drink bottles, soup cans, comic strips and road signs in paintings, collages and sculptures, showing the materialism of modern mass culture. The objects are enlarged, simplified and coloured differently.

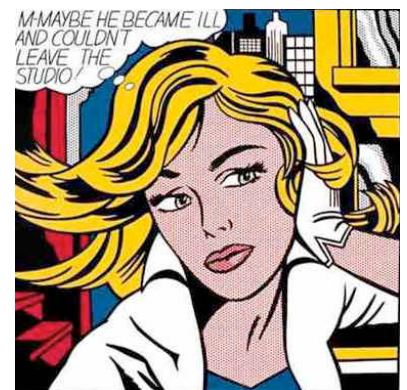


Pop Art influenced many artists and also adopted techniques of mass production, so artists didn't make one original but produced series of the same objects.

Pop Art reflected upon contemporary reality and the cultural changes of the 1960's: the music of the Beatles and the Rolling Stones, the idealism of the Kennedy era, the reality of the assassination of President John F. Kennedy in 1963, the outbreak of the Vietnam war in 1964, and other social events.



Andy Warhol (1928-1987) was the main figure in the Pop Art movement: he was an American painter, filmmaker, publisher and actor and made identical prints of familiar objects, like Coca-Cola bottles and Campbell's soup cans. In his works he used repetition and unnatural colours and often portrayed famous personalities from popular culture, from Liz Taylor to Elvis Presley. Warhol's quote, "In the future everybody will be famous for fifteen minutes", is known all over the world.



2. Write the letter and the name next to the related picture.

Choose from: Liz Taylor, Marilyn Monroe, "Che" Guevara, Jacqueline Kennedy.

- A. One of Warhol's most famous work: the portrait of an American film star whose real name was Norma Jean.
- B. Another portrait of an American actress, also famous for her sweet and seductive "violet" eyes. In 1963 she was in *Cleopatra* with her life-long love Richard Burton.
- C. The serial portrait of a Latin American revolutionary leader.
- D. A symbol of pop art: you can see it in two pictures, one is serial.
- E. This bottle is a symbol of the pop art movement and represents consumerism and globalization as well.
- F. The portrait of American President J.F. Kennedy's wife.
- G. Its author is Roy Lichtenstein, a prominent American pop artist. His work was heavily influenced by comics.