

# Blue Sky



## SPECIFICATIONS

Length: 31.2 Meters 102.4 Feet  
Beam: 7.65 Meters 25.1 Feet  
Draft: 1.4 Meters 4.6 Feet  
Number of crew: 4  
Built: 1994  
Builder: Codecasa  
Flag: U.K.  
Hull construction: Aluminium  
Hull configuration: Planing hull

## EQUIPMENT

Engines: - 2 x 3480Hp (2560kw) MTU 16V396TB94 (at 2100 rpm) - 2 x 48kw Onan Generators  
Cruising speed: 35  
Fuel Consumption: 1200 Litres/Hr

## ACCOMMODATION

Number of cabins: 3  
Cabin configuration: 3 Double  
Bed configuration: 2 Pullman, 3 King  
Number of guests: 8

---

## ACCOMMODATION

### Master Cabin

- 2 portholes with electric blinds
- walk-in wardrobe
- two armchairs
- double bed
- bedside cabinets
- vanity unit with chair
- TV
- two safe deposit boxes
- carpet

### Master Cabin Bathroom

- 2 portholes with manual blinds
- two separate areas with washbasin/shower and wc/bidet

### 2 VIP Cabins:

- 2 portholes with electric blinds
- wardrobe
- double bed + 1 pullman
- bedside cabinets
- TV
- carpet

### VIP Cabins Bathrooms

- 2 portholes with manual blinds
- two separate areas with washbasin/wc/bidet and shower

## EQUIPMENT

### Saloon

- TV system
- Hi-Fi system
- side windows with electric blinds
- 2 side sofas (5 pax each)
- leather floor throughout
- coffee table

### Dining Area

- rectangular table (10 seats)
- 10 chairs

### Fly Bridge

- sunbathing area with mattresses (7/8 pax)
- 2 fridges

### Aft Deck

- table for 8 people with 4 chairs and sofa for 4
  - 2 loudspeakers (linked with saloon system)
  - 4,30m Zodiac Tender
-

**Electronics and Navigation Equipment**

- Furuno Navnet Radar
- Simrad AP50 Autopilot
- FCV 6665 Furuno Depth Sounder
- Geonav Flash 11 GPS
- Simrad Compass
- Furuno Vhf
- Furuno SSB
- Furuno Fax/Phone

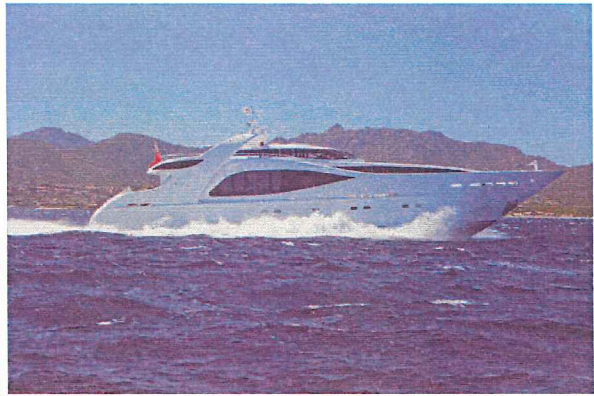
**Other Technical Data and Equipments:**

- 16.000lt fuel capacity
- 3.500lt water capacity
- 160 l/h Technicomar Watermaker (Matrix model)
- ice-maker
- wine cellar

Asking price: € 3.900.000



**The Vessel**

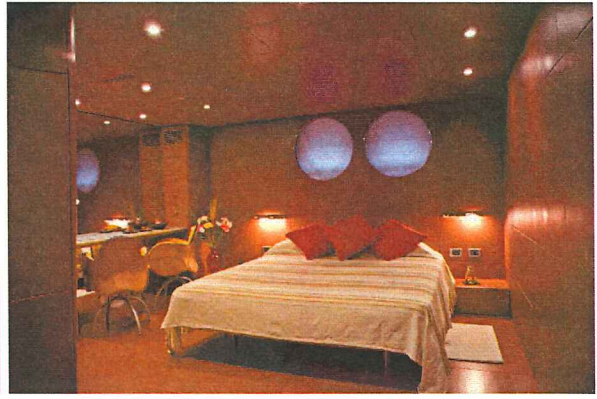


**The Vessel 3**

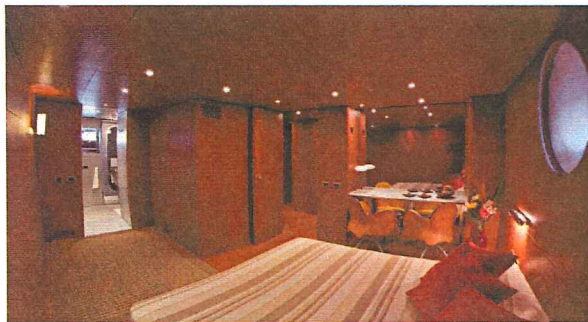
---



Saloon



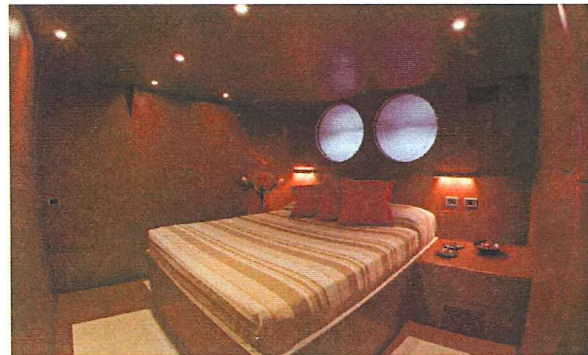
Owner Cabin



Owner Cabin (2)



Owner Bathroom



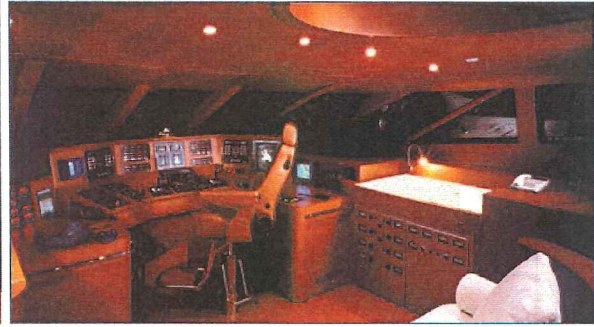
VIP Cabin



Dining area



Dining area - galley view



Wheelhouse

---

**This document is not contractual. All specifications are given in good faith and offered for informational purposes only. The publisher and company does not warrant or assume any legal liability or responsibility for the accuracy, completeness, or usefulness of any information and/or images displayed. Yacht inventory, specifications and charter prices are subject to change without prior notice. None of the text and/or images used in this brochure maybe reproduced without written consent from the publisher**

---