



A project ordered by the Communauté de Communes du Pays des Étangs, the Parc Naturel Régional de Lorraine and the association La Chaussure Bataville, as part of the "Nouveaux Commanditaires" action from the Fondation de France.

BATAVILLE

the lakes 13th CENTURY

Digging of the lakes.

TODAY

Every year on the 11th of November the *Hellocourt* farm organises fishing in the lake. Around fifty people take part annually.

the canal 1839-1853

Construction of the Marne-Rhine canal: 154 locks, 314 kilometres long.

1939

The factory's power station consumes 2.5 tonnes of coal per hour which is delivered through the canal.

the railway 1864

Opening of the railway between Dieuze and Avricourt.

1939

900 passengers per day using Moussey trainstation.

1969

End of the passenger service to Moussey. The railway doesn't exist anymore.

the farm 1871-1919

The German Wilhem Lorentz sets up a model farm on the *Hellocourt* lands.

the factory 1894

Tomas Bata who came from a family of shoemakers establishes the *Bata* shoe company in Zlin, Czech Republic.

OCTOBER 1931

Tomas Bata purchases the *Hellocourt* farm in order to build Bataville: 487 hectares consisting of fields, forests and lakes.

1932

The factory is designed and constructed using the same model as the Zlin factory: 80x20 meter buildings with standardised construction of concrete structure with brick infill.

1935-1975

The brickyard is set up by Bata and provides the construction material for the town.

1936

A new law is introduced which limits the expansion of Bataville. The projected 30 factory buildings and 15,000 inhabitants does not happen.

1949

Opening of the internal training centre for workers and managers.

1971

The factory employs 2,224 people and produces 4,650,640 pairs of shoes.

the garden city 1936

The modernist architect Le Corbusier drafts a plan for *Hellocourt*. This plan is, however, rejected in favour of a plan from Czech architects.

1932-1939

The workers' town was constructed in two different stages. The old town was located in front of the existing one but was demolished in the 1980s. The garden city provided all the modernist innovations. Bataville, with its factory, amenities, shops and farm could live self-sufficiently.

1945-1950

160 births are registered in Bataville.

1960-1970

Plots of land for housing are offered by Bata at a symbolic price of one franc. The *Haut des Vignes* area is gradually built.

the church

1966

The 16-meter and 400-seat church shouldn't tarnish the religion of work.

the community centre 1933

The community centre is constructed: the lunchroom provides 2,600 meals daily and the reception hall hosts the Leather ball and the Mimosa ball among other events.

the swimming pool 1938-1998

The outdoor swimming pool (25 x 12 metres) was among the first of its kind in Moselle county. 3,000 people went through the gates in 1970 increasing to 8,000 in 1990.

the sports hall 1957

Opening of the sports hall: Bataville's basketball team competes in the third best national league for a time.

the press 1932-1996

Since the foundation of Bataville all the events in the factory and its town have been recorded in a newspaper called *Bataville*. The newspaper was renamed *Batapresse* in 1983.

2001

The Bata company declares bankruptcy and a general strike is proclaimed by the workers.

There are around 30 other Bata-cities in the world.
BATAWA (CANADA) . BATAPUR (PAKISTAN) . BEST (HOLLAND) . BATANAGAR (INDIA) .
BATAIPORA (BRASIL) . EAST TILBURY (ENGLAND) . LÉOPOLDVILLE (BELGIAN CONGO) .
ETC



The association *Notre Atelier Commun* has been appointed to lead a programming study on Bataville in order to find a new identity for the town. Convinced that we can't imagine a future remotely, without the inhabitants and the territorial stakeholders, we have taken up residence on site for a year. By meeting the local actors and activating the area, Bataville can become an experimental space, a laboratory open to all who want to participate. The aim: a guide plan for September 2016.

Programme and further information: bataville.over-blog.com

L'UNIVERSITÉ FORAINE OF BATAVILLE

PRATICAL INFO

BATAVILLE

57770 Moussey / 57810 Réchicourt-le-Château



From the national road 4 (N4), between Nancy and Strasbourg, take exit toward Blâmont. From the D955 between Metz and Sarrebourg, take exit toward Maizières-lès-Vic.



Trainstations located in Igney-Avricourt (6 km away), Sarrebourg (24 km away) or Lunéville (24 km away).



Lock n°8, Marne-Rhine canal (KP 219)



Bicycle path along the Marne-Rhine canal

MORE INFORMATION

Communauté de Communes du Pays des Étangs – +33 3 87 07 42 02
Université Foraine – bataville.over-blog.com
La Chaussure Bataville – www.lachaussure-bataville.org
Guided tour on smartphone – application **GUIDIGO** - bataville



BATAVILLE

ENGLISH VERSION

THE FACTORY 4 650 640 PAIRS (1970)

MINI GUIDE 2016

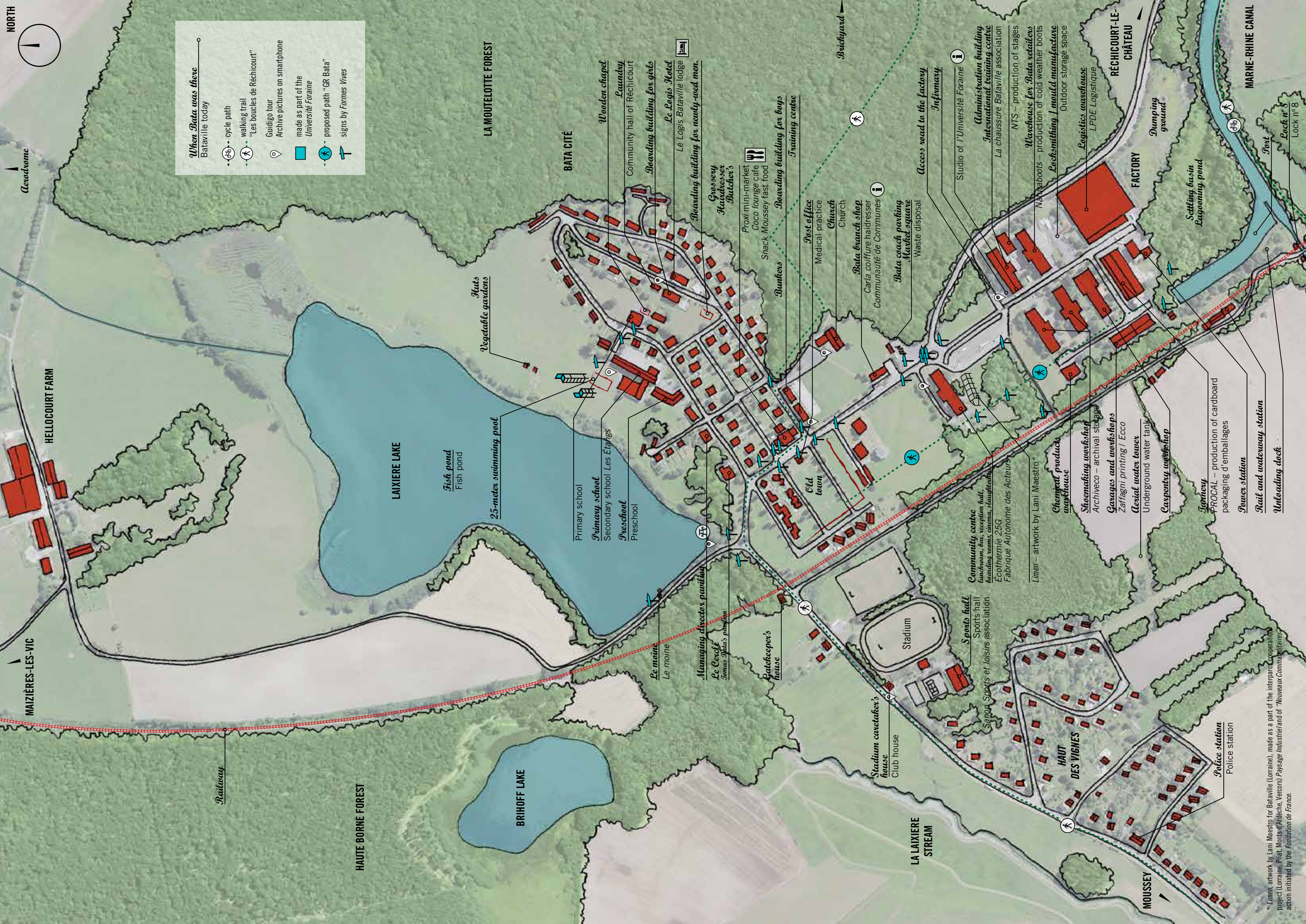
Avadname

NORTH



When Bata was there
Bataville today

- cycle path
- walking trail "Les boucles de Réchicourt"
- Guidigo tour
- Archive pictures on smartphone
- made as part of the Université Foraine
- proposed path "GR Bata"
- signs by Formes Vives



HELLOCOURT FARM

MAIZIÈRES-LES-VIC

Railway

HAUTE BORNE FOREST

LAIXIERE LAKE

Fish pond
Fish pond

25-meter swimming pool

Huts
Vegetable gardens

LA MOUTELOTTE FOREST

BRIHOFF LAKE

Primary school
Primary school
Secondary school Les Étangs
Preschool
Preschool

Huts
Vegetable gardens

Wooden chapel
Laundry
Community hall of Réchicourt

Boarding building for girls
Le Logis Bataville lodge
Boarding building for newly-wed men.

BATA CITÉ

Managing director pavilion
Le Cevallé
Thomas Bata's pavilion

Gatekeeper's house

Grassery
Hawdresser
Butcher's

Proxi mini-market
Coco lounge café
Snack Moussey fast food

Bunkers
Boarding building for boys
Training centre

Buckyard

Stadium caretaker's house
Club house

Stadium

Post office
Medical practice
Church
Church

Bata branch shop
Carla coiffure hairdresser
Communauté de Communes

Waste disposal

Access road to the factory
Infirmary

Community centre
lunchroom, bar, reception hall,
lecturing rooms, cinema, stage/theatre
Ecothermie 25G
Fabrique Autonome des Acteurs

Linen - artwork by Lani Maestro*

Studio of l'Université Foraine

Administration building
International training centre
La chaussure Bataville association

NTS - production of stages
Warehouse for Bata retailers
Navy boots - production of cold weather boots
Locksmithing / mould manufacture
Outdoor storage space

RECHICOURT-LE-CHÂTEAU

Chemical products warehouse
Shoemaking workshop
Archivco - archival storage

Gauges and workshops
Zaffagni printing / Ecco
Aerial water tower
Underground water tank
Carpentry workshop

Garagey
PROCAL - production of cardboard packaging d'emballages

Power station
Rail and waterway station
Unloading dock

Settling basin
Lagoooning pond

MARNE-RHINE CANAL

Sports hall
Sports hall
Sports association

Sanon Sports et loisirs association

HAUT DES VIGNES

Police station
Police station

MOUSSEY

LA LAIXIERE STREAM

* Liniem, artwork by Lani Maestro for Bataville (Lorraine), made as a part of the interparcooperatiom project Lorraine, Pilat, Monts d'Arèche, Vercors) Paysage Industriel and of "Nouveaux Communaux/aires" action initiated by the Fondation de France.