



# *Athyrium*

*By Christopher Salas*

Copyright 2016 © by Christopher Salas  
Pattern for personal use only. Designer can be contacted at [salaschris89@gmail.com](mailto:salaschris89@gmail.com).  
Photography by Sharon Bluemer

*Striped and short row eyelet wedges give the shawl the look of a primordial plant, especially with the colors I chose for this project. Athyrium is one of the oldest species of ferns to grow on the planet, and I couldn't think of a better name. This shawl is a perfect combination of casual knitting, areas of concentration, and all you need is only 200 yards of your three favorite colors!*

<b>MATERIALS:</b>	<b>GAUGE AND MEASUREMENTS:</b>
Three skeins (one color each) of The Fibre Company – Canopy Fingering (50% Alpaca, 30% Merino, 20% Bamboo. 200 yds.) <ul style="list-style-type: none"> <li>• Color A: Sarsaparilla</li> <li>• Color B: Parakeet</li> <li>• Color C: Quetzal</li> </ul> US 4 32" circ needle Locking stitch marker Tapestry needle	Gauge: About 12 sts and 21 rows every 2" in garter stitch. If you stick to a minimum of 200 yds per color and follow the instructions as written, gauge is not critical.  Measurements: 58" in wingspan, and 20" from increase edge to final short row tip.

**PATTERN NOTES:** This shawl is designed with only 200 yards of each color. I had about 40 yards of each color left over (about 90 yards of color B), so gauge is not truly important. If you have additional yarn, you may choose to increase this shawl.

<b>ABBREVIATIONS:</b>	
K: knit	St/sts: stitch/stitches
Kfb: knit the front and back of the same stitch	YO: yarn over
K2tog: knit 2 sts together	W&t: Wrap and turn
Ssk: slip-slip-knit	

## MAIN INCREASE SECTION

*This section makes up the majority of the shawl, increasing 3 sts every 4 rows.*

Repeat the following 4 rows eight times.

Row 1: k1, kfb, k to end.

Row 2: k to last 2, kfb, k1

Row 3: k1, kfb, k to last 3, k2tog, k1

Row 4: k to last 2, kfb, k1.

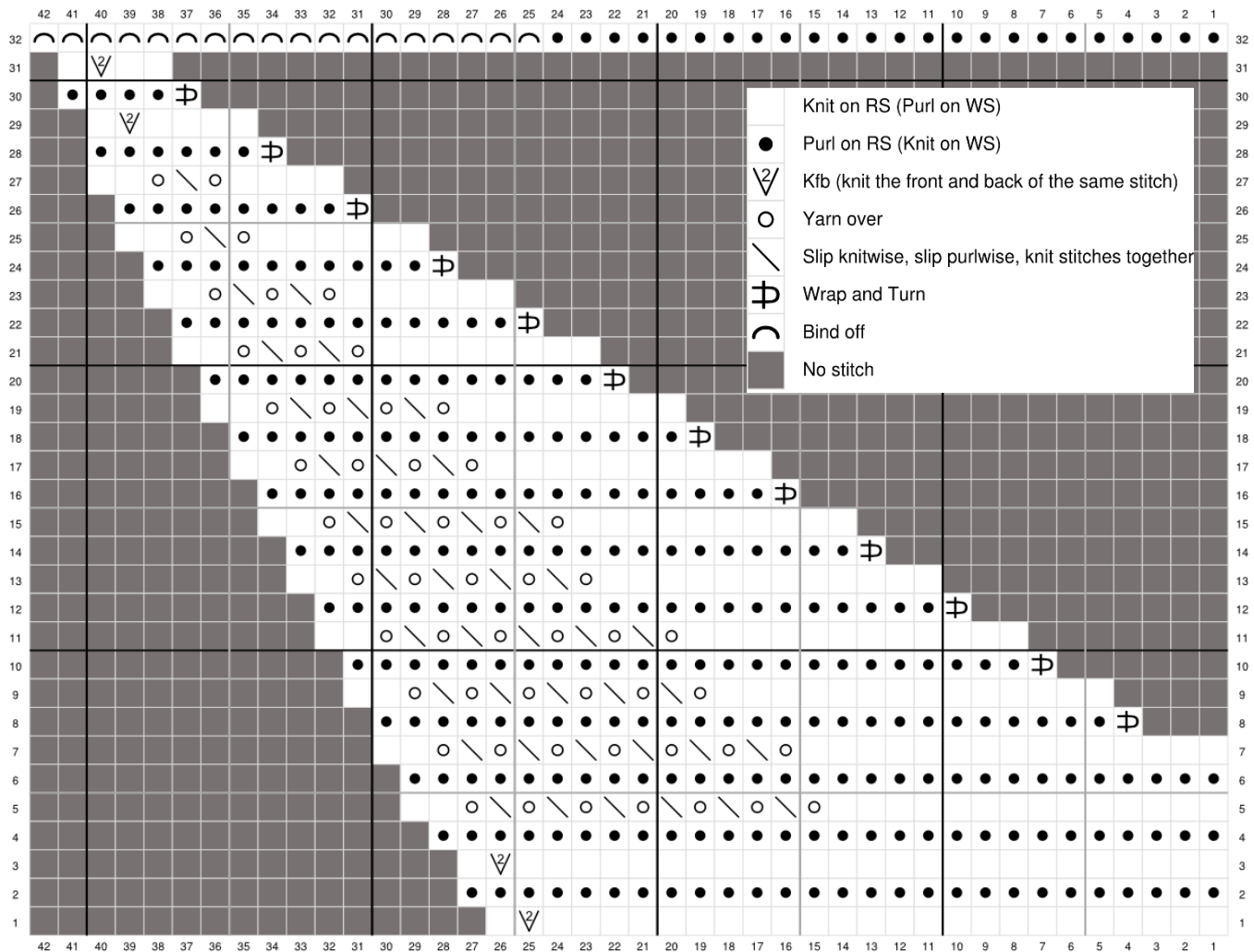
## LACED WEDGE SECTION

The chart in this section always begins on the final 26 sts and is ALWAYS worked with color B. Row 1 – 7 and 32 stripe across the project, and all WS even rows between rows 8 – 31 are short rows. Before

beginning, place a locking stitch marker 26 sts from the left end of the project. **If you are following the chart, the marker will be to the right of stitch one.**

Rows 1, 3, 5, and 7: k1, kfb, k to m, pass m, and work chart section to end.

Rows 2, 4, 6 and 32: Work the chart section to m, pass m, k to last 2 sts, kfb, k1



#### Lace Wedge (Written pattern):

Row 1: k1, kfb, k to last 2 sts, kfb, k1

Row 2: k to last 2 sts, kfb, k1

Rows 3 – 4: Repeat the last two rows once more.

Row 5: k1, kfb, k to m, pass m, k14, (yo, ssk) six times, yo, k2.

Row 6: k to last two sts, kfb, k1

Row 7: k1, kfb, k to m, pass m, k15, (yo, ssk) six times, yo k2.

Row 8: k26, w&t.

Row 9: k14, (yo, ssk) five times, yo, k2

Row 10 (and all even WS rows between now and Row 30): k to 3 sts before wrapped stitch, w&t)

Copyright 2016 © by Christopher Salas

Pattern for personal use only. Designer can be contacted at [salaschris89@gmail.com](mailto:salaschris89@gmail.com).

Photography by Sharon Bluemer

Row 11: k12, (yo, ssk) five times, yo, k2

Row 13: K12, (yo, ssk) four times, yo, k2

Row 15: k10, (yo, ssk) four times, yo, k2.

Row 17: k10, (yo, ssk) three times, yo, k2.

Row 19: k8, (yo, ssk) three times, yo, k2

Row 21: k8, (yo, ssk) two times, yo, k2

Row 23: k6, (yo, ssk) two times, yo, k2



Row 25: k6, yo, ssk, yo, k2

Row 27: k4, yo, ssk, yo, k2

Row 29: k4, kfb, k1

Row 31: k2, kfb, k1

Row 32 (Note: wraps do not need to be picked up in this row.): Bind off 18 sts, K to last 2 sts while dropping the marker on the way, kfb, k2.  
Break B.

#### STRIPED SECTION

*You will be instructed which color to start with in the schematic below.*

Rows 1 – 16: Repeat the four rows from the Main Increase section four times, alternating between colors B and C each time you complete a repeat. Break the color you last used.

Rows 17 – 32: Repeat the four rows from the Main Increase Section four times with the color that has not been broken. When completed, break this color.

---

#### SHAWL SCHEMATIC AND INSTRUCTIONS:

*This shawl can be expanded as desired if more yarn is available to you. Additionally, other than the Part 1 of the following instructions, stitch count is not too important so long as the Main Increase Section is executed to properly shape the project.*

With A, CO 4 sts.

1. Work Main Increase section until there are 28 sts.
2. Work Lace Wedge section with Color B
3. Starting with Color C and alternating with A, work rows 1 – 16 of Striped Section. Break A, and work rows 17 – 32 with C.
4. Work Lace Wedge Section with Color B
5. Starting with Color A and alternating with C, work rows 1 – 16 of Striped Section. Break C, and work rows 17 – 32 with A.

Copyright 2016 © by Christopher Salas

Pattern for personal use only. Designer can be contacted at [salaschris89@gmail.com](mailto:salaschris89@gmail.com).

Photography by Sharon Bluemer



6. Work Lace Wedge Section with Color B

Repeat parts 3 through 6 of the above schematic until you have a total of 6 Lace Wedge Sections (or more if you desire to). As you complete each part, I highly recommend sewing in all loose ends. This will save you time in finishing, and will also prevent any loose strands from accidentally unraveling. **NOTE! On the last Lace Wedge Section, bind off ALL sts loosely on Row 32.**

When completed, sew in any remaining loose ends, and block as needed.

