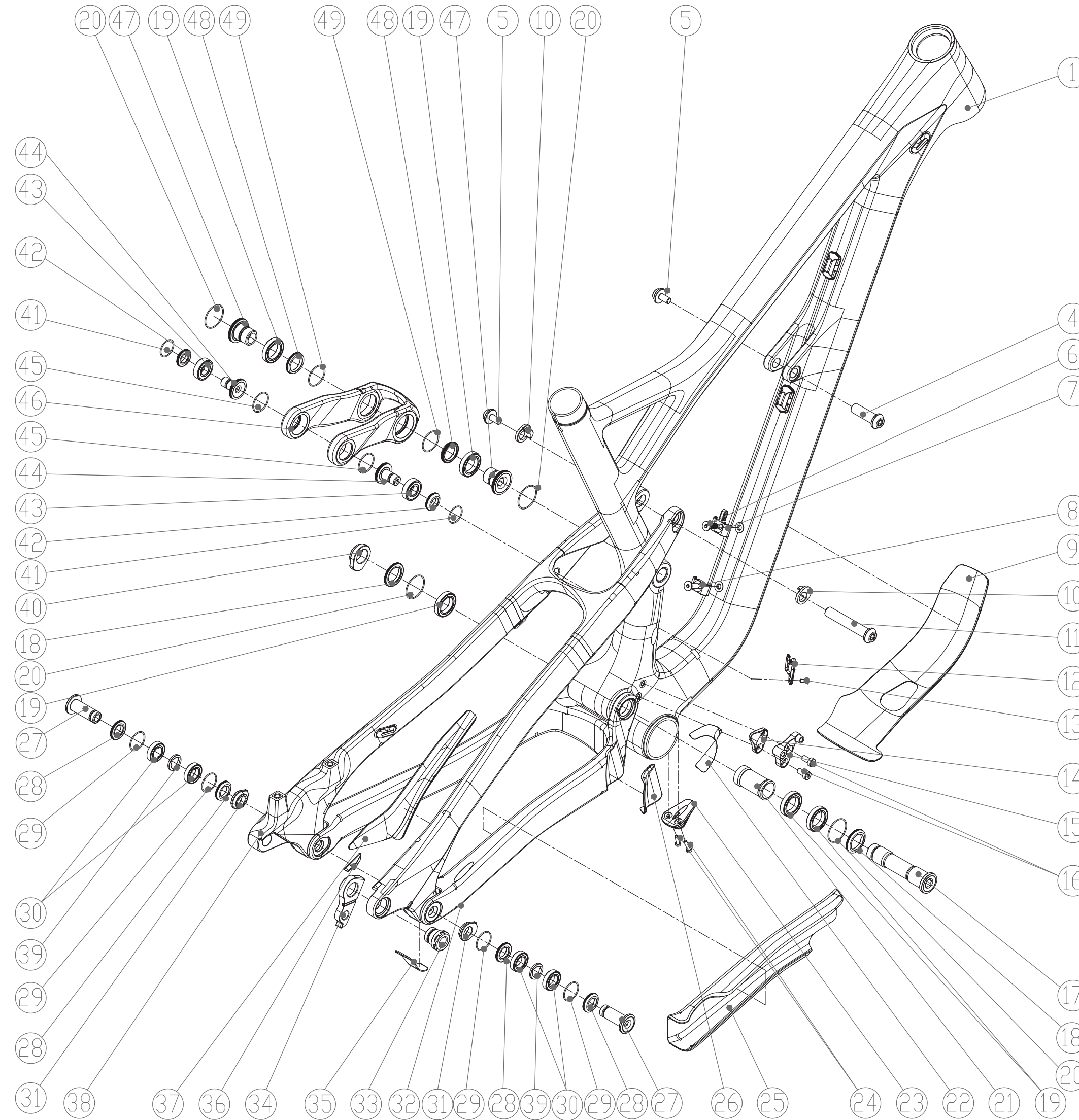


# 1EPP94 CARBON

## EXPLODED DRAWING | BOM



POS.	Part description	Quantity
1	Front Triangle	1
4	Shockbolt front Ø10x32mm	1
5	Shockbolt Screw	2
6	Socket countersunk head screw M5x16mm   DIN 7991	1
7	3 in 1 Cableclamp	1
8	2 in 1 Cableclamp	1
9	Downtube Protector	1
10	Flipchip 4mm	2
11	Shockbolt rear Ø10x58mm	1
12	Cableouttake Dropperpost	1
13	Socket countersunk head screw M3x8mm   DIN 7991	1
14	E-Type Adapter Cover	1
15	E-Type Adapter	1
16	Socket head thin cap screw M5x10mm   DIN 7984	2
17	Mainpivot Axle	1
18	Distancewasher Ø26x3,5mm	2
19	Deep groove ball bearing   61803 2RS (full compliment)	5
20	O-Ring Ø24x1 NBR	4
21	Distancesleeve Ø17x38	1
22	Chainsuckprotection FT	1
23	Cableouttakeclamp D/T	1
24	Socket head thin cap screw M3x12   DIN 7984	2
25	Chainstayprotector	1
26	Chainringprotection C/S	1
27	Horst Link pivot Axle	2
28	Distancewasher Ø21x3,5mm	4
29	O-Ring Ø19x1mm NBR	4
30	Deep groove ball bearing   61801 2RS (full compliment)	4
31	Horst Lik pivot Nut	2
32	Chainstay	1
33	Mech hanger screw	1
34	Mech hanger	1
35	Rear derailleur protection	1
36	Chainsuck protector S/S	1
37	Seatstay protector	1
38	Seatstay	1
39	Distancesleeve Ø12x2mm	2
40	Main pivot Nut	1
41	O-Ring Ø17x1mm NBR	2
42	Distancewasher Ø19x4mm	2
43	Deep groove ball bearing   61900 2RS (full compliment)	2
44	Upper link bolt	2
45	O-Ring Ø20x1mm NBR	2
46	Link	1
47	Lower link bolt	2
48	Distancewasher Ø23x3,5mm	2
49	O-Ring Ø21x1mm NBR	2

### HEADSET DIMENSIONS

TOP: IS 42 | 28,6 (1 1/8")  
 BOTTOM: IS 52 | 40 (1.5")

### SHOCK INSTALLATION LENGHT

200 X 57 MM

### SHOCK HARDWARE

FRONT: Ø10X17,4MM  
 REAR: Ø10X40MM

### SEATPOST DIAMETER

31,6MM

### SEATPOSTCLAMP INNER DIAMETER

35,6MM

### BREAKMOUNT STANDARD

POSTMOUNT 160

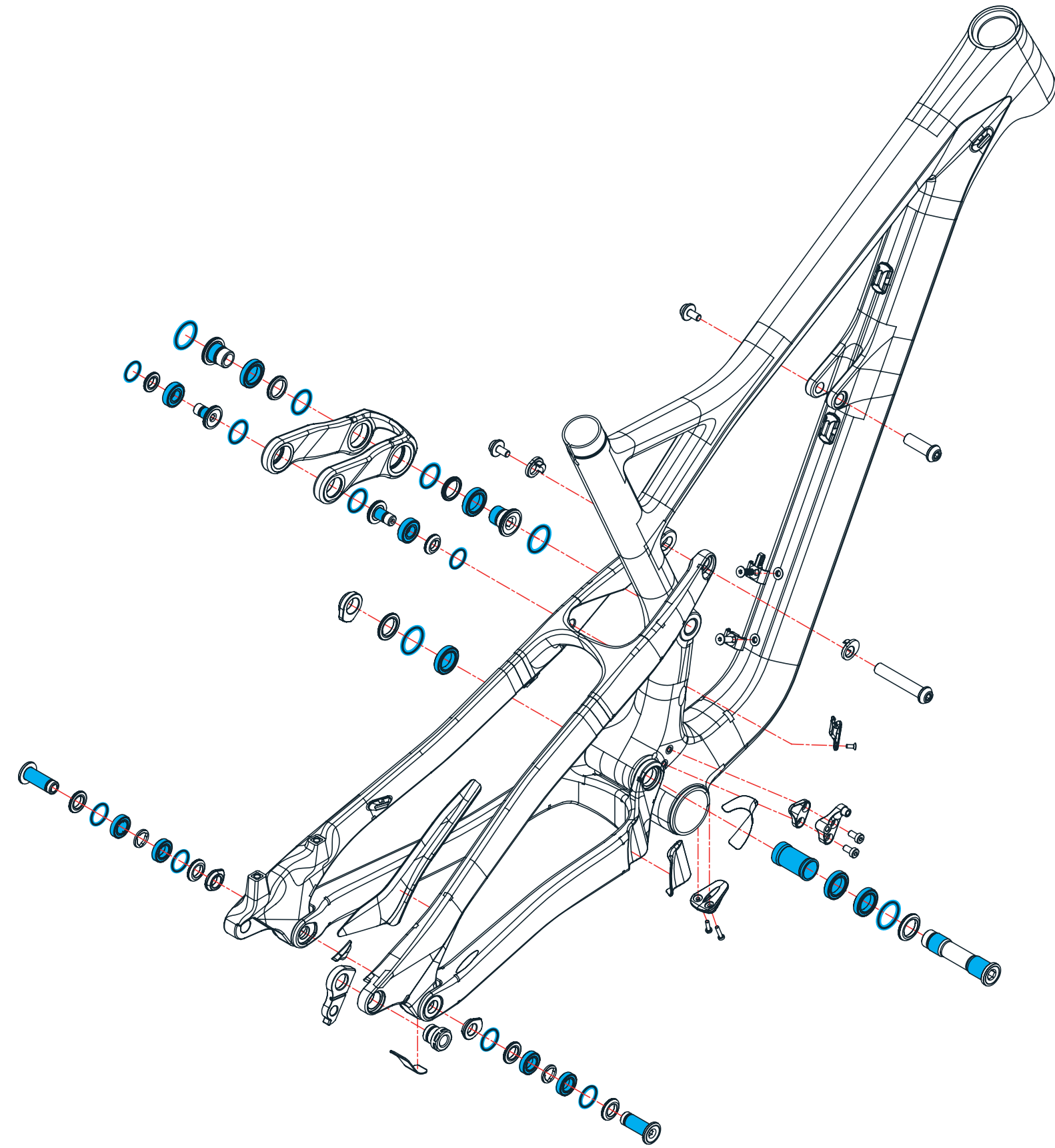
### BOTTOM BRACKET STANDARD

92MM GXP PRESSFIT BOTTOM BRACKET



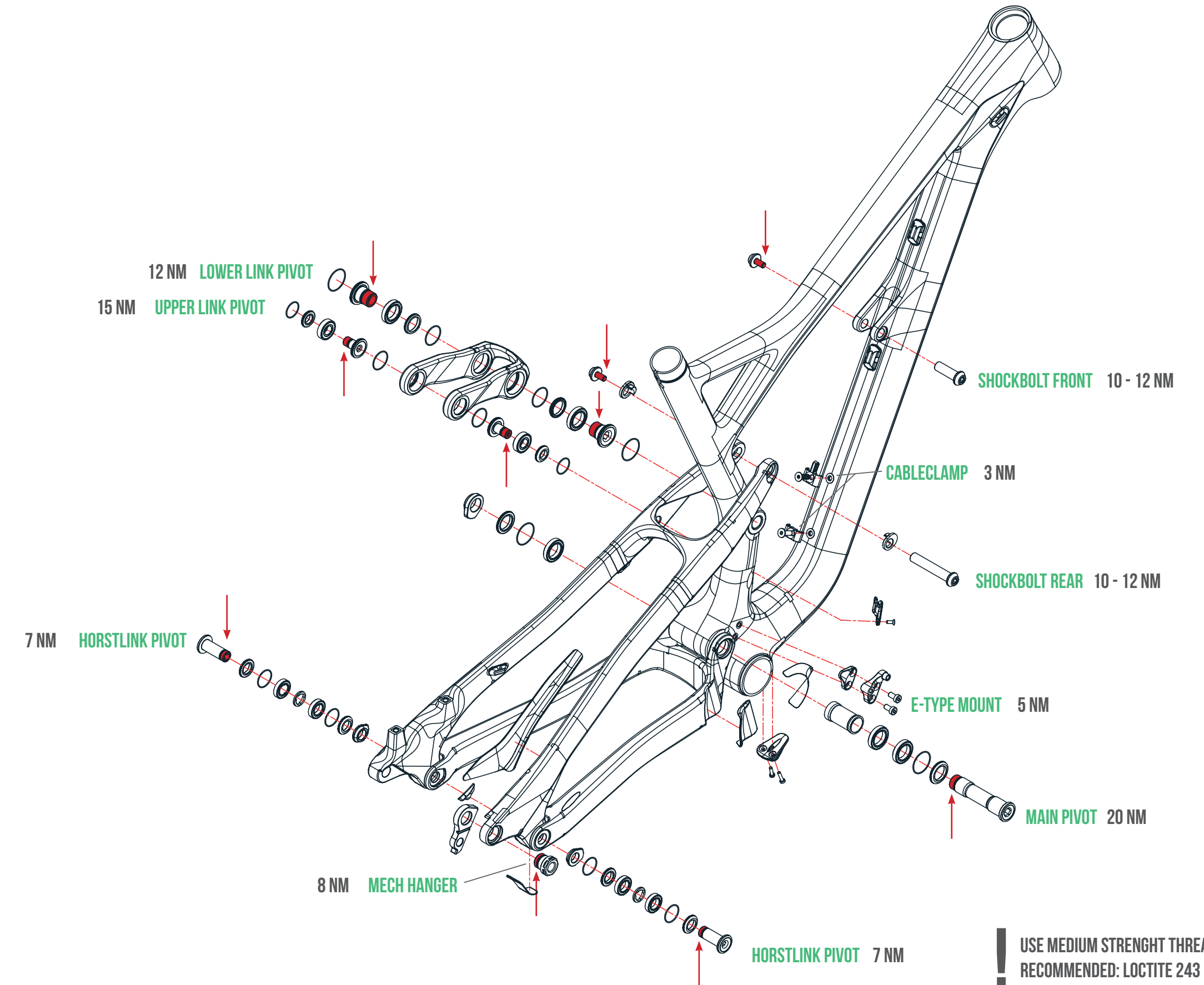
## TORQUE/THREADLOCKER & GREASE INFORMATION

GREASE



USE CARBON SUITABLE GREASE ONLY  
RECOMMENDED: GLEITMO 585 K

THREADLOCKER



USE MEDIUM STRENGTH THREADLOCKER  
RECOMMENDED: LOCTITE 243

